

# Current Activity

- Managing Sessions
  - Managing Connection Pools
- 

## Managing Sessions

- Viewing Sessions
- Viewing a Session's Properties
- Filtering your Session
- Setting the Refresh Rate
- Accessing the Session Viewer
- Canceling a Session

## Viewing Sessions

When you connect to the server, you are able to see in the Administrator details of all the sessions currently running on the server. To view the sessions on the server, open ApplinX Administrator and expand the **Management>Current Activity>Sessions** node. The Main view pane on the right will display the session's details:

### Session ID

The ID of the session.

#### Example Value

U0000001

### Description

The session's description, for example, User ID on the host or IP address.

### Application

The name of the application the session relates to.

#### Example Value

CompositeDemo

### Device Name

Workstation ID/LU Name, available only in certain protocols.

**Duration**

The amount of time the session has been in its current state.

**Example Value**

14:30

**State**

Current status of the connection pool. Can be "Not Started", "Initializing", "Active", "In standby", "Suspended", "Stopping" or "Stopped".

**Example Value**

Active

**Connection Pool**

The name of the connection pool.

**Example Value**

/<connection pool name>

**Type**

The type of session currently running: Web Enablement, SOA, or Development session (Designer)

The status bar shows the total number of sessions currently running, and in parenthesis, the number of active sessions.

**Viewing a Session's Properties**

To view a specific session's properties, open ApplinX Administrator, right-click the specific session in the Main view and select **Open**. The *Session* dialog box appears including the following information:

**Session****ID**

The session's ID on the ApplinX server.

**Address**

The IP address from where the session is connected to ApplinX.

**Description**

The session's description. For example, this may be the session's computer address.

**Host****Address**

The IP address of the host.

**Device name**

Workstation ID/LU name, available only in certain protocols.

**Application**

The name of the application on ApplinX server to which this session is connected.

**Replay**

The GCT file name that is to work with this session and the screen number in the GCT file.

**Trace**

The name of the trace file that is tracing the current session.

**Bytes sent**

The number of bytes sent to the host.

**Bytes received**

The number of bytes received from the host.

**Status****Idle time**

The time period in which a session has not performed a communication activity with the host.

**Number of calls**

The number of communication activities the session has made with the host.

**State**

The current communication status between ApplinX server and the host. Can be either: "Idle" (connected, not attached), "Initializing", "Processing" (executing an action), "Active" (attached), or "Disconnecting".

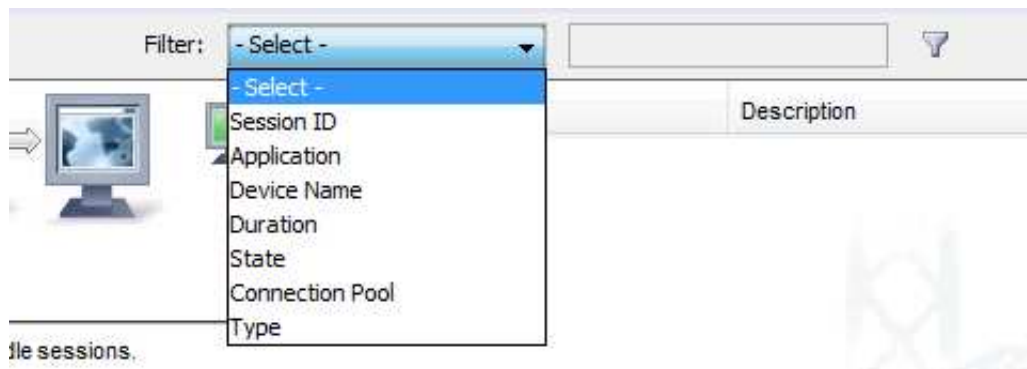
**Filtering your Session**

You can filter the displayed sessions in the ApplinX Administrator by

- Session ID

- Application
- Device Name
- Duration
- State
- Connection Pool
- Type

See screen below:



Two types of filtering are supported:

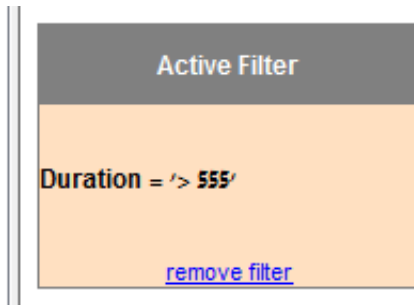
- For the **Duration** column, you can enter values in format "x day(s)", "hh:mm:ss" or value in seconds.

You can also use less than/greater than signs: "<" / ">", for example

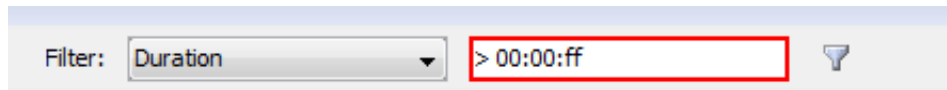
- "> 3 days" (greater than three days)
- "< 00:05:00" (less than five minutes)
- For all other columns, the check is based on the string itself. You can use "\*" as wildcard to replace 0 or more characters, or use "!=" or "not". Examples:
  - "U00\*"
  - "not U\*"
  - "!=U\*"

Define a filter and press **Enter** or click the **Filter** button to activate the filter. The filter specification appears near the table in the node information area.

When a valid filter is properly applied, the background color of the filter area is colored light orange:



If you are filtering by duration, the filter is validated. If it does not match one of the allowed formats ("x day(s)", "hh:mm:ss" or value in seconds) a red border is created around the text field, indicating the value is not allowed.



When you modify active filter, the color changes back to indicate that the filter line and active filter box are not the same.

#### ▶ To remove the filter

- Click the blue "remove filter" link.

Or:

Choose the defaulted "**Select**" option from the filter type combo box.

Or:

Remove the value from the text field and press **Enter** or filter button.

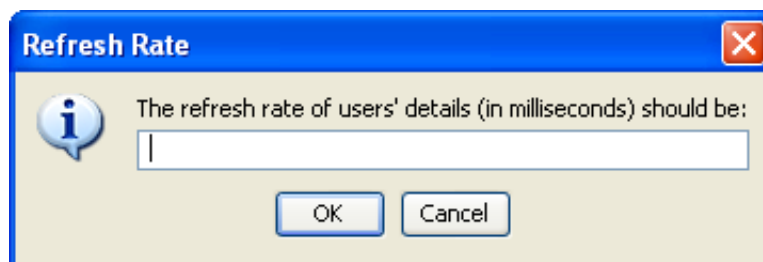
## Setting the Refresh Rate

By default, the session list is sampled every second in order to keep it updated. When many users connect to the server, this refresh rate can significantly slow down the list's update. You can change the system's refresh rate to suit your needs.

#### ▶ To set the Refresh Rate

1. Open ApplinX Administrator.

Right-click on the Management>Current Activity>Sessions node and select Refresh Rate. The Refresh Rate dialog box appears.



2. Type the new **Refresh Rate** in milliseconds, click **OK**.

The Refresh Rate is changed, and you may read all updated data from the server in the desired frequency.

## Accessing the Session Viewer

This feature allows you to view the current host session while you are in the Administrator. The benefits of this feature are that it allows you to view the current host screen at the same time as other users are viewing the same host screen. If you are experiencing problems in code, the *Session Viewer* allows you to view the current host screen.

To access the *Session Viewer*, open ApplinX Administrator and select the relevant session in the Main View, then either right-click on the session and select **Show Session** or select **Show Session** in the **Connection** menu.

## Canceling a Session

Using the Administrator, you can cancel a session from the server. This is useful when:

- A session is "stuck" and is unable to perform any activity.
- An unauthorized session has logged on.
- A session remains idle for a long time, and a "non-activity" timeout has not been defined.

### Note:

You can use session filtering to cancel multiple sessions in one operation. See *Filtering your Session* above.

### To cancel a session on the server

1. Open ApplinX Administrator.
2. Select the relevant session in the Main View, then either right-click on the session and select **Cancel Session** or select **Cancel Session** in the **Connection** menu.
3. Click **Yes** in the *Cancel Session* dialog box appears.

## Managing Connection Pools

- Viewing Application Connection Pools
- Viewing Connection Pool Monitoring Information
- Viewing Connection Information
- Canceling a Connection
- Changing the Status of a Connection Pool
- Viewing Connection Monitoring Information

**Note:**

Refer to the Administrative Web Services API to access connection pool information using the API.

**Viewing Application Connection Pools**

To view a list of all Pools whose applications are loaded open ApplinX Administrator and select the **Management>Current Activity>Connection Pools** node.

**Application/Connection Pool**

The name of the application followed by the full name of the Connection Pool.

**Example Value**

Demo:/folderA /ConnectionPoolName

**Status**

Current status of the connection pool:

"Not Started" - The connection pool was not initialized yet. If a user requests a connection the connection pool will return an immediate error.

"Initializing" - The connection pool is trying to reach Active status, but does not have any ready connection yet. If a user requests a connection the connection pool will return an immediate error.

"Active" - The connection pool is working, and managed to create at least one connection to the host.

"In standby" - The connection pool had several consecutive errors trying to create new connections to the host. The connection pool will continue to try to connect if user requests arrive, but will not initiate new connections otherwise. If a new connection is successfully created, the status will automatically change to Active.

"Suspended" - The connection pool is blocked for new users, and does not maintain its connections. If a user requests a connection the connection pool will return an immediate error.

"Stopping" - The connection pool is trying to reach Stopped status, but still has connections in different stages of termination. When all connections are down, the status will automatically change to Stopped. If a user requests a connection the connection pool will return an immediate error.

"Stopped" - The connection pool does not have connections or maintenance. If a user requests a connection the connection pool will return an immediate error.

**Active**

The number of connections in use (with users attached).

**Example Value**

10

**Ready**

The number of available connections.

### Example Value

5

### Process

The number of connections currently in one of the following states: initializing, recycling or keep-alive.

### Example Value

1

## Viewing Connection Pool Monitoring Information

To view the run time information about a specific connection pool, open ApplinX Administrator and select the **Management>Current Activity>Connection Pools** node and then either double-click the required connection pool in the Main view area or right-click the required connection pool either in the ApplinX Explorer or in the Main view section and select **Show Monitor**.

The screenshot shows a dialog box titled "Connection pool Information (InstantDemoEdit:/gotoLogon)". The dialog is divided into several sections:

- Pool:**
  - Name: gotoLogon
  - Folder: /
  - Application: InstantDemoEdit
- Current State:**
  - Status: Not Started
  - Since: 11/08/2008 18:43:16
  - Connections: 0
  - Broken: 0
  - Active: 0
  - Initialize: 0
  - Ready: 0
  - Recycle: 0
  - Keep-alive: 0
  - Terminate: 0
- History:**
  - Connections watermark: 0
  - Sessions watermark: 0
  - % of waiting sessions: 0
  - Average wait time: 0
  - Sessions served: 0
  - Connections used: 0
  - Ratio: 0.0
- Connection Information:** (This section is currently empty)

A "Close" button is located at the bottom right of the dialog.



**Pool**

This panel displays identifying information about the displayed connection pool.

**Name**

The name of the displayed connection pool.

**Folder**

The folder in which the displayed host connection pool is placed.

**Application**

The application to which the connection pool belongs.

**Current State**

This panel displays run time information about the displayed connection pool.

**Status**

The connection pool's status: "Not Started, Initializing, Active, In standby, Suspended, Stopping "or "Stopped".

**Since**

The connection pool is in its current status since this time.

**Connections**

The total number of connections in the connection pool, ignoring broken connections.

**Broken**

The number of connections that failed initialization recently. When more than 0, this number is shown in red.

**Active**

The number of connections currently held by a session (user).

**Ready**

The number of connections ready for use.

**Keep-Alive**

The number of connections currently performing keep-alive activity.

**Initialize**

The number of connections currently performing initialization activity.

**Recycle**

The number of connections currently performing recycling activity.

**Terminate**

The number of connections currently performing termination activity.

**History**

This panel displays accumulative information about the displayed connection pool. The information in this panel is reset when the connection pool is stopped.

**Connections watermark**

The maximum number of concurrent connections in this connection pool.

**Sessions watermark**

The maximum number of sessions that used this connection pool concurrently.

**% of waiting sessions**

The percent of sessions that did not immediately get a connection when trying to connect to ApplinX.

**Average wait time**

The average time (in milliseconds) sessions waited for a READY connection (calculated only among those sessions that waited) multiplied by the percentage of waiting sessions. For example: if 8% sessions had to wait, and in average each of those waited 1000 milliseconds, the overall average wait time was:  $0.08 * 1000 = 80$  milliseconds.

**Sessions served**

The total number of sessions that connected to the connection pool since the connection pool started.

**Connections used**

The total number of different host connections created by this connection pool.

**Ratio**

**Sessions served** divided by **Connections used**. This parameter can give a general indication of how much connection recycling is effective. A large ratio means that a relatively small number of connections served a large number of sessions.

**Connection Information**

This panel displays the name of the **Information Set** that the displayed connection pool uses. If this panel is empty, no Information set is used.

**Information set**

The name of the information set used by this connection pool.

## Viewing Connection Information

To view a list of all the connections of a particular connection pool, open ApplinX Administrator and select the **Management>Current Activity>Connection Pools** node and in the ApplinX Explorer area select the required connection pool.

### Connection ID

The connection identification number (unique in the contexts of this connection pool)

#### Example Value

6

### Status

Current status of the connection. Can be "Active", "Ready", "Initializing", "Keep-alive", "Recycle" or "Terminating".

#### Example Value

Active

### Session ID

This column is relevant only for active connections. The Session ID of the user that holds this connection.

#### Example Value

U0000014

### Time

The time that passed since the connection is in its current status.

#### Example Value

00:03:24

### Error Message

Relevant only for broken connections. A message that may imply on the reason this connection became corrupt.

## Canceling a Connection

To cancel a connection, open ApplinX Administrator and expand the **Management>Current Activity>Connection Pools** node. Right-click on a connection and select **Cancel**.

**Note:**

Active connections can also be cancelled by canceling their user through the Sessions node.

## Changing the Status of a Connection Pool

To modify the activity status of a connection pool, open ApplinX Administrator and expand the **Management>Current Activity>Connection Pools** node. Select one or more connections you want to control, right-click and select one of the options detailed below:

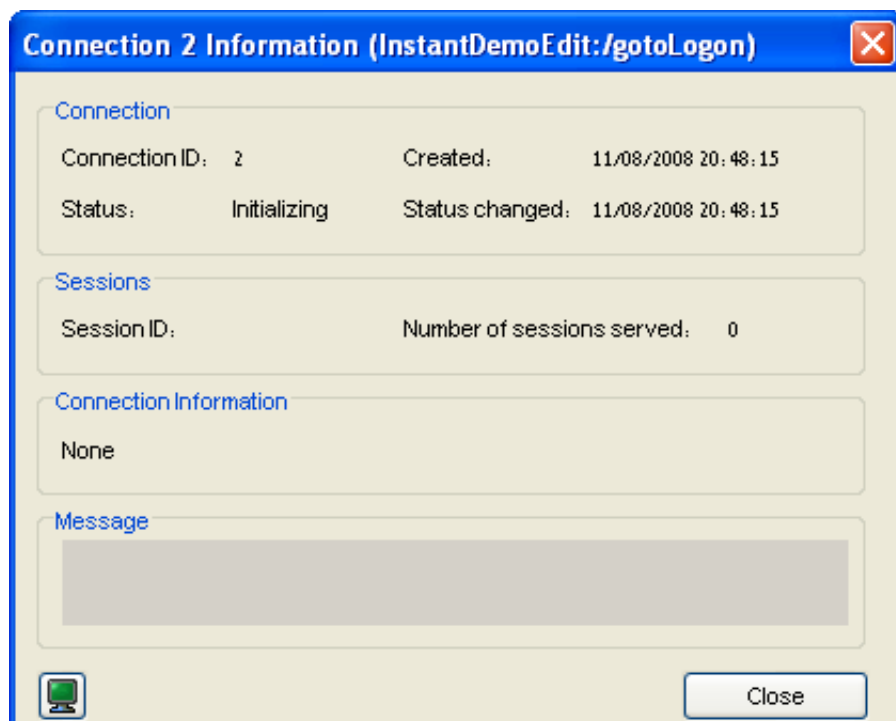
**Note:**

The available options will vary according to the current status of the selected connection pool(s).

Name	Description
Start Connection Pool	A connection pool that has not been started or a stopped connection pool will reload its configuration, initialize a new pool and start the connection pool operation. During the activation of the pool, until at least one connection is ready, the connection pool is in Initializing status. When the Start connection pool option is used on a suspended connection pool, it will simply resume operation.
Suspend Connection Pool	Relevant only for active connection pools. Will stop creating new connections and connection pools for new requests, but will not close the existing connections in the pool.
Resume Connection Pool	Resumes the possibility to use a suspended connection pool of the application
Stop Connection Pool	Stop providing connection pool and close all connections in the pool. During this process, the connection pool enters Stopping status, until all connections are closed. Then the connection pool becomes Stopped. Reactivation will reload the connection pool configuration.
Restart Connection Pool	Stop the connection pool. After it reaches Stopped status, start the connection pool again.

## Viewing Connection Monitoring Information

To view a form that displays the run time information about a specific connection of a connection pool, open ApplinX Administrator and click on the **Management>Current Activity>Connection Pools** node and select a connection pool. Right-click the required connection in the Main view section and select **Show Monitor**. The *Connection Information* dialog box which displays run time information about a specific connection of a connection pool appears.



## Connection

### Connection ID

The Identifier of the displayed connection.

### Created

Creation time of this connection.

### Status

The current status of the connection. One of: " Active/ Ready/ Initializing/ Recycling/ Keep-alive/ Terminating/ Broken".

### Status changed

The time of the last change of the connection's status.

## Sessions

### Session ID

Active connections only: displays the ID of the session holding the displayed connection.

### Number of sessions served

The number of sessions this specific connection served so far.

## Connection Information

### Using connection information ID

If a Connection Information set is used by this connection pool, this is the ID of the specific record used by the displayed connection.

### Message Panel

Displays error messages for broken connections.