

# **webMethods EntireX**

## **EntireX Workbench**

Version 9.7

October 2014

This document applies to webMethods EntireX Version 9.7.

Specifications contained herein are subject to change and these changes will be reported in subsequent release notes or new editions.

Copyright © 1997-2014 Software AG, Darmstadt, Germany and/or Software AG USA, Inc., Reston, VA, USA, and/or its subsidiaries and/or its affiliates and/or their licensors.

The name Software AG and all Software AG product names are either trademarks or registered trademarks of Software AG and/or Software AG USA, Inc. and/or its subsidiaries and/or its affiliates and/or their licensors. Other company and product names mentioned herein may be trademarks of their respective owners.

Detailed information on trademarks and patents owned by Software AG and/or its subsidiaries is located at <http://softwareag.com/licenses>.

Use of this software is subject to adherence to Software AG's licensing conditions and terms. These terms are part of the product documentation, located at <http://softwareag.com/licenses/> and/or in the root installation directory of the licensed product(s).

This software may include portions of third-party products. For third-party copyright notices, license terms, additional rights or restrictions, please refer to "License Texts, Copyright Notices and Disclaimers of Third-Party Products". For certain specific third-party license restrictions, please refer to section E of the Legal Notices available under "License Terms and Conditions for Use of Software AG Products / Copyright and Trademark Notices of Software AG Products". These documents are part of the product documentation, located at <http://softwareag.com/licenses> and/or in the root installation directory of the licensed product(s).

Use, reproduction, transfer, publication or disclosure is prohibited except as specifically provided for in your License Agreement with Software AG.

**Document ID: EXX-EEXXWORKBENCH-97-20160805**

## Table of Contents

EntireX Workbench .....	v
1 Scope of the EntireX Workbench .....	1
Workbench Editors .....	2
EntireX Wrappers .....	3
Software AG IDL Extractors .....	5
Other Components .....	6
2 Supported File Types .....	7
Input Files .....	8
Output Files .....	8
3 Server Mapping Files for Natural .....	11
Server Mapping Files in the EntireX Workbench .....	12
When is a Server Mapping File Required? .....	13
Source Control of Server Mapping Files .....	14
Comparing Server Mapping Files .....	14
4 Server Mapping Files for COBOL .....	15
Server Mapping Files in the EntireX Workbench .....	16
How to Set the Type of Server Mapping Files .....	19
When is a Server Mapping File Required? .....	20
Migrating Server Mapping Files .....	22
Source Control of Server Mapping Files .....	24
Comparing Server Mapping Files .....	24
5 Server Mapping Deployment Wizard .....	25
Introduction .....	27
Using .....	27
Preferences .....	31
Command-line Mode .....	34
6 EntireX IDL Tester .....	37
Introduction .....	38
Calling the IDL Tester .....	38
Using a Broker with EntireX Security .....	41
Using RPC Servers with Natural Security .....	41
7 Using EntireX Custom Wrappers .....	43
Define EntireX Custom Wrappers .....	44
Running a Custom Wrapper .....	51
8 Using the EntireX Workbench in Command-line Mode .....	53
Command Line under Windows .....	54
Command Line under Linux .....	55
List of all Commands .....	55
9 Storing IDL Properties in an External File .....	59



---

# EntireX Workbench

---

The EntireX Workbench is implemented and delivered as of a set of Eclipse plug-ins. It provides the EntireX development-time user interface in a commonly used environment. Among other capabilities, EntireX Workbench provides various wrappers, IDL extractors, editors and testers for generating and testing interface objects to be used in RPC communication between existing RPC servers and RPC client applications.

<i>Scope</i>	Lists the components of the EntireX Workbench, with links to more information.
<i>Supported File Types</i>	File types supported by EntireX Workbench.
<i>Server Mapping Files for Natural</i>	Handling server mapping files for Natural in the EntireX Workbench. Server mapping files are used at runtime to marshal and unmarshal the RPC data stream. This document provides information on source control, comparing etc. of server mapping files.
<i>Server Mapping Files for COBOL</i>	Handling server mapping files for COBOL in the EntireX Workbench. Server mapping files are used at runtime to marshal and unmarshal the RPC data stream. This document provides information on migration, source control, comparing etc. of server mapping files.
<i>Server Mapping Deployment Wizard</i>	How to deploy server-side mapping files (Workbench files with extension .svm) with the Deployment Wizard.
<i>IDL Tester</i>	Using the EntireX IDL Tester.
<i>Using EntireX Custom Wrappers</i>	How to define your own template-based wrappers.
<i>Command-line Mode</i>	Using EntireX Workbench from a command line.
<i>Storing IDL Properties</i>	Using an external file to store IDL properties for export/import.

See also *Installing the EntireX Workbench Plug-ins in Standalone Mode* in the general installation documentation for how to install the EntireX Workbench Plug-ins. This document is applicable if you want to install the Workbench plug-ins in standalone mode, that is, not as part of the full webMethods EntireX installation.

If you are not yet familiar with Eclipse, see the Eclipse online help at <http://www.eclipse.org/documentation/>, or start the Software AG Designer and then choose **Help > Help Contents**. General information on Eclipse can then be found under *Workbench User Guide*. When working with the Software AG Designer, the online help also provides help for the currently installed Software AG products; this can be found under *Software AG Designer Guides*.

---

# 1

## Scope of the EntireX Workbench

---

■ Workbench Editors .....	2
■ EntireX Wrappers .....	3
■ Software AG IDL Extractors .....	5
■ Other Components .....	6

See also *Installing the EntireX Workbench Plug-ins in Standalone Mode* in the general installation documentation. These sections are applicable if you want to install the Workbench plug-ins in standalone mode, that is, not as part of the full webMethods EntireX installation.

## Workbench Editors

---

### IDL Editor

A Software AG IDL file contains definitions of the interface between client and server. The IDL file is used by Software AG wrappers to generate RPC clients, RPC servers and tester etc. on the basis of these definitions. The IDL file can be edited by the IDL Editor provided by plug-ins for Eclipse.

### Merging and Refactoring Software AG IDL

IDL refactoring is a process that checks all programs and structures in a single library if they contain identical groups. All identical groups are extracted in a single structure in the same library, and replaced with a structure reference. If a structure exists that is identical to the structure to be created, all references will point to the existing structure and a new one will not be created. Two groups are identical if each group has the same number and order of parameters, and each parameter in one group has the same name and the same type as the corresponding parameter in the other group. IDL refactoring can be performed on single or multiple IDL files.

### XML Mapping Editor

The EntireX XML Mapping Editor allows you to map XML document structures to IDL libraries, programs and parameters. The mappings can be defined for the request and response to the server application, or from the server to the client. The input for the XML Mapping Editor can be a Software AG IDL file and/or an IDL-XML mapping file (perhaps produced by a previous XML Mapping Editor session or by importing a WSDL file, XML Document or XML Schema). The output is an IDL-XML mapping file, other XML structure definitions (such as sample XML files), and perhaps a created or changed IDL file.



## EntireX Wrappers

---

In EntireX terms, a wrapper is a tool contained in the EntireX Workbench to generate interface objects based on a Software AG IDL file and additional wrapping properties. The following wrappers are provided:

### **COBOL Wrapper**

EntireX COBOL Wrapper provides access to RPC-based components from COBOL applications. It enables you to develop both client and server applications.

### **C Wrapper**

EntireX C Wrapper provides access to RPC-based components from C applications. It enables you to develop both client and server applications.

### **Custom Wrappers**

The EntireX Custom Wrappers are user-configurable, template-based wrappers and need a Software AG IDL file, a template (e.g., client or server) and the Software AG IDL Compiler.

### **DCOM Wrapper**

The EntireX DCOM Wrapper generates DCOM-enabled components using RPC technology. This so-called “wrapping” makes it possible to treat existing applications as ActiveX components.

### **.NET Wrapper**

The EntireX .NET Wrapper provides access to RPC servers for .NET client applications and access to .NET servers for any RPC client. The .NET Wrapper generation tools of the Workbench take as input a Software AG IDL file, which describes the interface of the RPC, and generates C# classes that implement the methods and data types of the interface.

### **Wrapper for EJB**

The EntireX Wrapper for Enterprise JavaBeans enables Java-based components to access an EntireX RPC server using Enterprise JavaBeans. This is accomplished by mapping RPC server libraries to EJB stateful session beans. A remote procedure call will be mapped to a method of the corresponding Enterprise JavaBeans. The Java-based components can use the logic implemented in the libraries of the existing RPC servers, or they can implement new logic on the application server side, using parts of the old logic.

### **Java Wrapper**

The EntireX Java Wrapper provides access to EntireX RPC-based components from Java applications. EntireX Java RPC enables users to develop both client and server applications written in Java. Java applets can also be used as EntireX RPC clients.

### **Java Wrapper for Natural**

The EntireX Java Wrapper for Natural allows you to generate EntireX Java client interface objects from Natural subprograms in a NaturalONE project in Eclipse. The generated Java client interface objects can be used by Java application developers to access Natural server components, using EntireX/Natural RPC.

### **Natural Wrapper**

The Natural Wrapper allows you to develop Natural client applications that access RPC-based server components, and to create Natural RPC server skeletons you can use as a basis to write a Natural RPC server that can be accessed by RPC clients.

### **PL/I Wrapper**

The EntireX PL/I Wrapper provides access to RPC-based components from PL/I applications. It enables you to develop both client and server applications.

### **Integration Server Wrapper**

The webMethods Integration Server Wrapper generates Integration Server adapter services and listeners from a Software AG IDL file within an Integration Server connection definition.

### **Web Services Wrapper**

The EntireX Web Services Wrapper is a wizard that generates Web services from Software AG IDL, XML/SOAP mapping files or Natural subprogram files. The generated result is a Web service archive (.aar) that contains the relevant artifacts of the Web service such as an XML/SOAP mapping file (.xmm), WSDL file and additional configuration files. The Web service archive can be deployed for execution by the wizard or - in an extra deployment step - in a Web Services Stack with the EntireX XML/SOAP Listener runtime.

### **Web Services Wrapper for Natural**

The EntireX Web Services Wrapper for Natural allows you to develop Web Services that access Natural server components, using EntireX/Natural RPC.

### **XML/SOAP Wrapper**

The EntireX XML/SOAP Wrapper enables XML-based communication to EntireX/Natural RPC servers and communication from EntireX/Natural RPC clients to XML-based servers.

## Software AG IDL Extractors

---

An extractor is a tool contained in the EntireX Workbench to extract a Software AG IDL file. The following extractors are provided:

### **IDL Extractor for COBOL**

The Software AG IDL Extractor for COBOL enables you to extract the interface of a COBOL server and transforms it into a Software AG IDL and a Software AG server mapping file. Both files are required to provide access for any RPC client to the COBOL server.

### **IDL Extractor for Natural**

The Software AG IDL Extractor for Natural extracts a Software AG IDL definition from a Natural source in a Natural project in Eclipse, or from an object within a Natural RPC environment.

### **IDL Extractor for PL/I**

The Software AG IDL Extractor for PL/I extracts a Software AG IDL file from a PL/I source. The PL/I source can be located in the file system or accessed remotely within a PL/I RPC environment definition.

### **IDL Extractor for Integration Server**

The Software AG IDL Extractor for webMethods Integration Server is a wizard that reads a package from the Integration Server and generates a Software AG IDL file from all the existing services and nodes. Each service results in a program in the IDL file. All parameters of the services are mapped to an IDL alphanumeric data type, available as variable (AV) or fixed ( $A_n$ ) length. From EntireX Adapter 9.7, mapping is described in this product's documentation.

### **IDL Extractor for XML Document**

The Software AG IDL Extractor for XML Document generates a *Software AG IDL File* in the IDL Editor documentation and a related XML mapping file (XMM) from a given XML document.

### **IDL Extractor for XML Schema**

The Software AG IDL Extractor for XML Schema generates a *Software AG IDL File* in the IDL Editor documentation and a related XML mapping file (XMM) from given XML schema files.

### **IDL Extractor for WSDL**

The Software AG IDL Extractor for WSDL is a wizard that generates Web service client artifacts from a WSDL file. With these artifacts, EntireX RPC client applications can access external Web services.

## Other Components

---

### UDDI Registration

EntireX UDDI Registration is a tool with which you can register a Web service with any UDDI registry for which you have an account.

### CentraSite Integration

Web services created with EntireX can be published to CentraSite. CentraSite offers enhanced registry functionality, and also repository functionality that enables you to store Web services artifacts and register interdependencies for impact analysis.

### Default Broker View

The EntireX Default Broker View is part of the EntireX Workbench. It displays the status of the EntireX Default Broker and the active RPC Services registered to it.

## 2 Supported File Types

---

■ Input Files .....	8
■ Output Files .....	8

## Input Files

---

The following table lists the file types that the EntireX Workbench can use as input. Some of the file types may have different content. The content determines which files you can generate. The actions in the context menu depend on the file type.

File Type	Content	Generated Files
cvm	Client-side mapping file that completes the related IDL of the same name with server mapping information to successfully call the target RPC server customer program. Contains COBOL mapping (see <a href="#">Server Mapping Files for COBOL</a> ) or Natural mapping.	
idl	Software AG IDL for RPC, see <i>Software AG IDL File</i> in the IDL Editor documentation.	C client, C server, Java client, Java server, Java tester, COBOL client, COBOL server, C# client, DCOM object, XMM file, PL/I client, PL/I server.
svm	Server-side mapping file that completes the related IDL of the same name with server mapping information to successfully call the target RPC server customer program. Contains COBOL mapping; see <a href="#">Server Mapping Files for COBOL</a> .	
wsdl	Web service description file.	IDL file, XMM mapping file.
xml	XML document.	IDL file, XMM mapping file.
xmm	EntireX XMM file with element mapping.	
xmm	EntireX XMM file with attribute mapping.	
xmm	EntireX XMM file with user-defined mapping.	
xmm	EntireX XMM file with SOAP mapping.	WSDL file.
xsd	XML Schema file.	IDL file, XMM mapping file.

## Output Files

---

The following table lists the file types generated by the EntireX Workbench.

File Type	Content	Generated from
aar	Service archive for Web Services Stack.	IDL file with XML mapping.
cvm	Client-side mapping file (Natural   COBOL) that completes the related IDL of the same name with server mapping information to successfully call the target RPC server customer program.	COBOL source; Natural source.
idl	Software AG IDL for RPC.	Import XSD, import XML, import WSDL.
svm	Server-side mapping file (COBOL) that completes the related IDL of the same name with server mapping information to successfully call the target RPC server customer program. Contains COBOL mapping.	COBOL source.
wsdl	Web service description file.	IDL file.
xml	XML document as test document for the XML Tester.	IDL file.
xmm	EntireX XMM file with element mapping.	IDL file with XML mapping.
xmm	EntireX XMM file with attribute mapping.	IDL file with XML mapping.
xmm	EntireX XMM file with user-defined mapping.	IDL file with XML mapping.
xmm	EntireX XMM file with SOAP mapping.	IDL file with XML mapping.





# 3

## Server Mapping Files for Natural

---

■ Server Mapping Files in the EntireX Workbench .....	12
■ When is a Server Mapping File Required? .....	13
■ Source Control of Server Mapping Files .....	14
■ Comparing Server Mapping Files .....	14

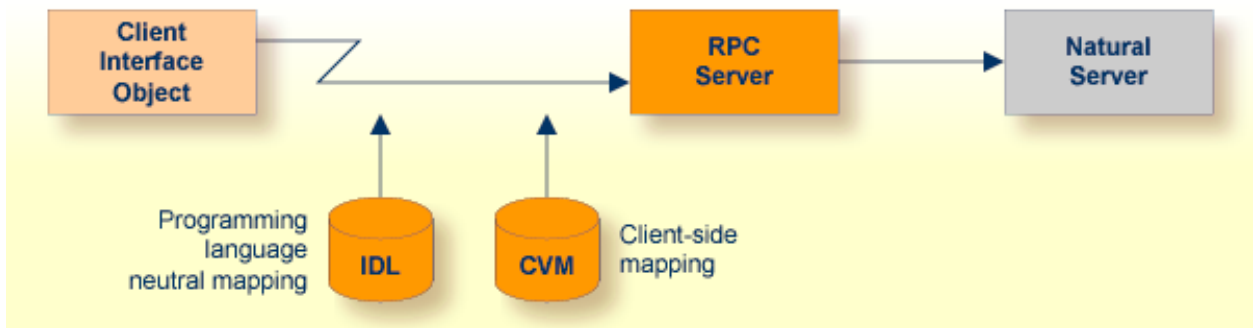
Server mapping enables the RPC server to correctly support special Natural syntax such as `REDEFINES`, special Natural Mapping Editor operations, etc. If one of these elements is used the IDL Extractor for Natural automatically extracts a server mapping file in addition to the IDL file (interface definition language). Also the Natural Wrapper may generate a server mapping file for RPC server generation. The server mapping file is used at runtime to marshal and unmarshal the RPC data stream. Client-side mapping files (EntireX Workbench files with extension `.cvm`) are used for Natural only.

## Server Mapping Files in the EntireX Workbench

---

The server mapping file for Natural in the EntireX Workbench is of type client-side. There are no server-side mapping files as with COBOL.

## Client-side Mapping



The following rules apply to a server mapping file for Natural:

- The mapping file is of type client-side. There are no server-side mapping files as with COBOL.
- Mapping files have the extension .cvm.
- The mapping file has to relate to an appropriate IDL file. Always keep the IDL file and the mapping file together in the same folder.
- The mapping file is created if required by the Natural Wrapper | Extractor. See [When is a Server Mapping File Required?](#).
- If an IDL file has a corresponding mapping file, at least one of the IDL programs in the IDL file requires server-mapping information to correctly call the target server. For those IDL programs, there is a server mapping (corresponding to a line) in the server mapping file.
- If there is an IDL file but no corresponding mapping file, there is no IDL program that requires server mapping information.

## When is a Server Mapping File Required?

### IDL Extractor for Natural

Natural Syntax	Natural Mapping Editor	Server Mapping Required	More Information
REDEFINE		yes	<i>Extracting Natural REDEFINES under Natural to IDL Mapping in the IDL Extractor for Natural documentation</i>
all	Rename of program	yes	<i>Renaming a Program</i>
all	Multiple interfaces	yes	<i>Extracting Multiple Interfaces</i>
all	Set constant	yes	<i>Setting Natural Parameters to Constants</i>
all	Suppress	yes	<i>Suppressing Natural Parameters</i>

Natural Syntax	Natural Mapping Editor	Server Mapping Required	More Information
Other combinations		no	

## Natural Wrapper

Natural Wrapper	Server Mapping Required	More Information
IDL program name is not a valid Natural name and is therefore adapted, or the Natural program name is customized	yes	<i>Step 2: Customize Natural Server Names under Using the Natural Wrapper for the Server Side within NaturalONE</i>

## Source Control of Server Mapping Files

---

Because server mapping files (EntireX Workbench files with extension .cvm) contain text data only, a server mapping file is text-based (although it is not intended for human consumption). Therefore, you can include it in your source control management together with the IDL file and the Natural source(s) as a triplet that should always be kept in sync.

## Comparing Server Mapping Files

---

For server mapping files (EntireX Workbench files with extension .cvm), you can use a third party file/text compare tool to check if two files are identical.

A server mapping entry (corresponding to a line in a server mapping file) contains a creation timestamp at offset 276 (decimal) in the format `YYYYMMDDHHIISS.T`. The precision is 1/10 of a second.

# 4

## Server Mapping Files for COBOL

---

■ Server Mapping Files in the EntireX Workbench .....	16
■ How to Set the Type of Server Mapping Files .....	19
■ When is a Server Mapping File Required? .....	20
■ Migrating Server Mapping Files .....	22
■ Source Control of Server Mapping Files .....	24
■ Comparing Server Mapping Files .....	24

Server mapping enables the RPC server to correctly support special COBOL syntax such as `REDEFINES`, `SIGN LEADING` and `OCCURS DEPENDING ON` clauses, `LEVEL-88` fields, etc. If one of these elements is used, the IDL Extractor for COBOL automatically extracts a server mapping file in addition to the IDL file (interface definition language). Also, the COBOL Wrapper may generate a server mapping file for RPC server generation. The server mapping is used at runtime to marshal and unmarshal the RPC data stream. There are client-side mapping files (EntireX Workbench files with extension `.cvm`) and server-side mapping files (Workbench files with extension `.svm`). If you have not used server-side mapping, we recommend you use client-side mapping.

See also *Server-side Mapping Files* in the respective sections of the documentation.

## Server Mapping Files in the EntireX Workbench

---

This section covers the following topics:

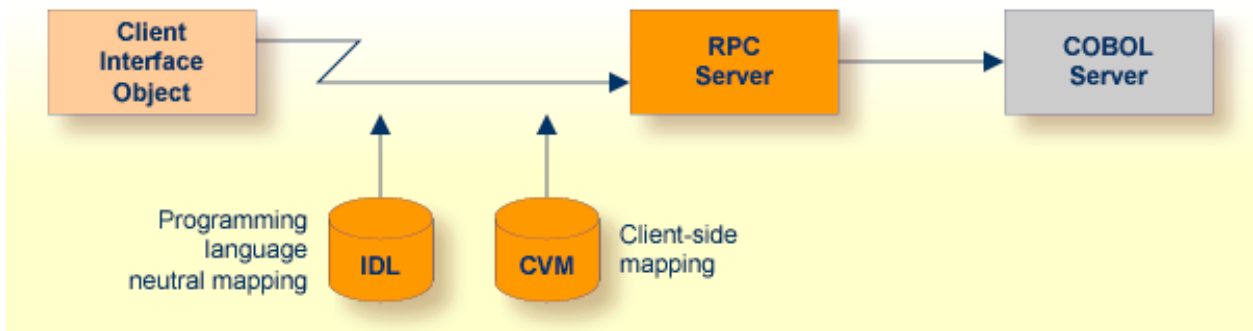
- [Introduction](#)
- [Client-side Mapping](#)
- [Server-side Mapping](#)

### Introduction

The following rules apply to a server mapping file for COBOL in the EntireX Workbench:

- The mapping file is of type client-side or server-side. Use one type or the other; they cannot be combined. See [How to Set the Type of Server Mapping Files](#).
- Mapping files have the extension `.cvm` or `.svm`.
- The mapping file has to relate to an appropriate IDL file. Always keep the IDL file and the mapping file together in the same folder.
- The mapping file is created if required by the COBOL Wrapper | Extractor. See [When is a Server Mapping File Required?](#).
- If an IDL file has a corresponding mapping file, at least one of the IDL programs in the IDL file requires server-mapping information to correctly call the target server. For those IDL programs, there is a server mapping (corresponding to a line) in the server mapping file.
- If there is an IDL file but no corresponding mapping file, there is no IDL program that requires server mapping information.

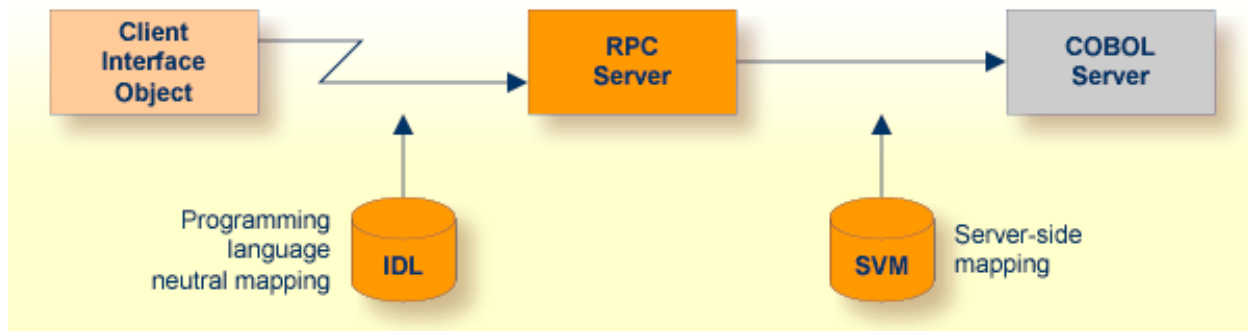
## Client-side Mapping




The following rules apply to client-side mapping:

- Client-side mapping files have the extension `.cvm` in the EntireX Workbench.
- The mapping files are generated when the EntireX Workbench is in client-side mapping mode, see [How to Set the Type of Server Mapping Files](#).
- Handling of client-side mapping is easier than server-side mapping. This can be an important criterion, for example if the RPC server is hosted in a mainframe environment and you do not have access to mainframe development resources. The following tasks are not required:
  - deploying the server mapping files to the RPC server
  - setting up a server-side mapping container in the mainframe environment
  - change management of server-side mapping files in the mainframe environment
- The mapping is wrapped into the client interface objects when an RPC client is generated. The client-side mapping must be available before you create any RPC client component, that is, the COBOL server program must be extracted or generated first.
- The mapping is sent during runtime to the target RPC server with the RPC request.
- Only point-to-point connections are allowed. The RPC client with the client-side mapping in its client interface object can only call one specific target COBOL server program. If you want to replace the COBOL server program by another implementation, for example Java, you need to rebuild all the RPC clients without the client-side mapping wrapped into their client interface object.
- Client-side mapping files are not supported by RPC clients generated with the *DCOM Wrapper* and *COBOL Wrapper*. Use server-side mapping files instead. See *Server-side Mapping*.
- To use client-side mapping, all EntireX components involved must be version 9.7 or higher.

## Server-side Mapping



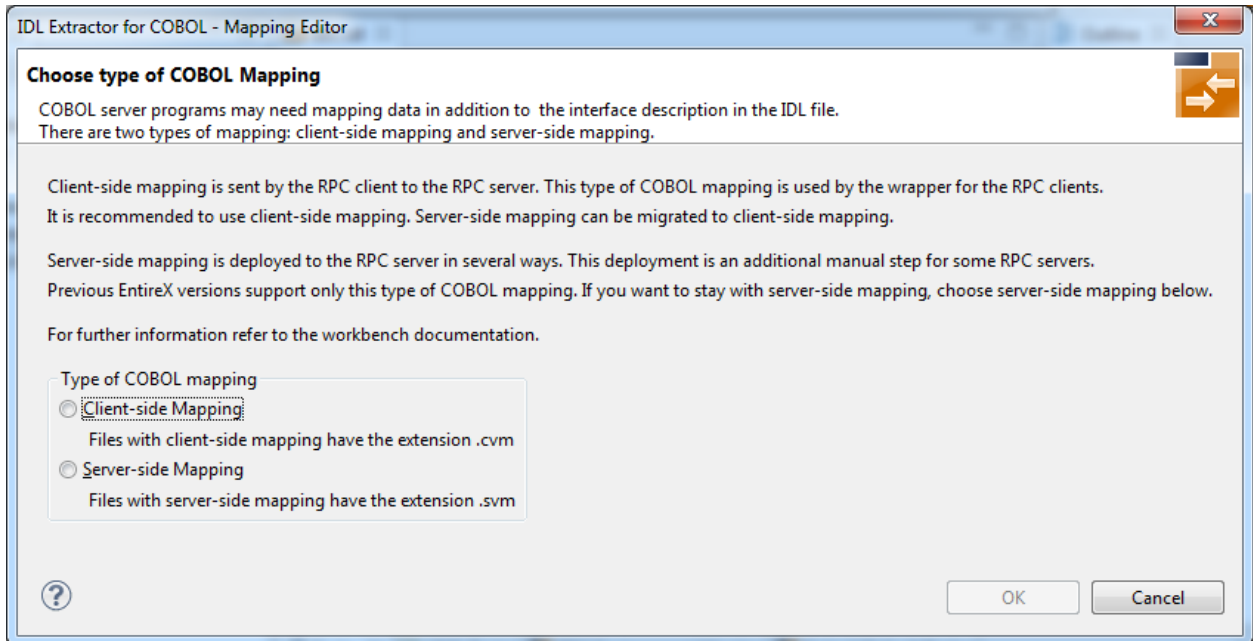
The following rules apply to server-side mapping:

- Server-side mapping files have the extension .svm in the EntireX Workbench.
  - The files are generated when the workbench is in server-side mapping mode, see [How to Set the Type of Server Mapping Files](#).
  - The files have to be deployed to the RPC server. See *Deploying Server-side Mapping Files to the RPC Server* in the respective sections of the documentation.
-  **Note:** For IMS Connect and CICS ECI connections with the webMethods EntireX Adapter for Integration Server, server-side mapping files are not deployed. They are wrapped into the Integration Server connection - the same as client-side mapping files. For RPC connections, the server-side mapping files must be deployed to the target RPC server. See the EntireX Adapter documentation under <http://documentation.softwareag.com> > *webMethods Product Line*.
- Server-side mapping is read at runtime by the RPC server from the server-side mapping container, see *Server-side Mapping Files in the RPC Server* in the respective sections of the documentation
  - Flexible connections are possible: the RPC client can call any target server program as long as the IDL interface matches. You do not need to rebuild the RPC clients when replacing the COBOL server program by a different implementation, for example Java, as required with client-side mapping files.
  - Server-side mapping files can be migrated to client-side mapping files, see [Migrating Server Mapping Files](#).



## How to Set the Type of Server Mapping Files

Every EntireX Workbench (Eclipse) workspace is either in client-side mapping mode (generating EntireX Workbench server mapping files with extension .cvm) or server-side mapping mode (generating workbench server mapping files with extension .svm) for COBOL mapping. If this decision has not yet been taken for a workspace and the COBOL Wrapper | Extractor is called, you are prompted with the following pop-up to choose the type for COBOL mapping:



For more information on handling the different types of COBOL mapping, see [Server Mapping Files in the EntireX Workbench](#).

In *client-side* mapping mode, it is not possible to modify server-side mapping files (EntireX Workbench files with extension .svm). This means that if there is a related server-side mapping file available for an IDL file, you cannot use the

- *IDL Extractor for COBOL* to extract an additional interface or modify an existing one
- *COBOL Wrapper* to generate an RPC Server

You have to migrate the server-side mapping files first. See [Migrating Server Mapping Files](#).

In *server-side* mapping mode, it is not possible to modify client-side mapping files (EntireX Workbench files with extension .cvm). This means that if there is a related client-side mapping file available for an IDL file, you cannot use the

- *IDL Extractor for COBOL* to extract an additional interface or modify an existing one

- *COBOL Wrapper* to generate an RPC Server

Later on, you can readjust the mode in the **Preferences** of the respective tool. See *IDL Extractor for COBOL Preferences* or *Generation Settings - Preferences* in the COBOL Wrapper documentation.

## When is a Server Mapping File Required?

- [IDL Extractor for COBOL](#)
- [COBOL Wrapper](#)

### IDL Extractor for COBOL

A server mapping file (workbench file with extension .cvm or .svm) is generated by the *IDL Extractor for COBOL* if the COBOL server program is of a specific interface type, contains specific COBOL syntax, or the IDL interface is redesigned (Suppress, Set constant, etc.) in the *COBOL Mapping Editor*. The type of server mapping (server-side with extension .svm or client-side with extension .cvm) is defined in a preference that applies to the entire EntireX Workbench (Eclipse) workspace. See [How to Set the Type of Server Mapping Files](#).

Interface Type	COBOL Syntax	COBOL Mapping Editor	Server Mapping Required	More Information
CICS DFHCOMMAREA and In different to Out	all		yes	<p><i>CICS with DFHCOMMAREA Calling Convention - In different to Out</i> under COBOL Mapping Editor in the IDL Extractor for COBOL documentation <sup>(1)</sup> and the following COBOL server examples for CICS input message different to the CICS output message:</p> <ul style="list-style-type: none"> <li>■ <i>Example 2: Redefines</i></li> <li>■ <i>Example 3: Buffer Technique</i></li> <li>■ <i>Example 4: COBOL SET ADDRESS Statements</i></li> </ul>
CICS Channel Container	all		yes	<i>CICS with Channel Container Calling Convention</i>
CICS Large Buffer	all		yes	<i>CICS with DFHCOMMAREA Large Buffer Interface</i>
IMS MPP (IMS Connect)	all		yes	<i>IMS MPP Message Interface (IMS Connect)</i>
IMS BMP	all		yes	<i>IMS BMP with Standard Linkage Calling Convention</i>
Micro Focus	BINARY clause		yes	<i>Micro Focus with Standard Linkage Calling Convention</i>

Interface Type	COBOL Syntax	COBOL Mapping Editor	Server Mapping Required	More Information
CICS Channel Container, CICS Large Buffer, IMS MPP (IMS Connect)	OCCURS clause	Set Arrays (Fixed <-> Unbounded)	yes	<i>Tables with Fixed Size and example COBOL Server Using Data Length to Process a Variable Number of Array Elements for CICS Channel Container</i>   CICS Large Buffer (Same   Different) <sup>(1)</sup>   IMS MPP (IMS Connect).
all	OCCURS DEPENDING ON clause		yes	<i>Tables with Variable Size - DEPENDING ON Clause under COBOL to IDL Mapping in the IDL Extractor for COBOL documentation</i>
all	REDEFINES clause		yes	<i>REDEFINE Clause</i>
all	TRAILING [SEPARATE] clause		yes	<i>SIGN LEADING and TRAILING SEPARATE Clause</i>
all	LEADING [SEPARATE] clause		yes	<i>SIGN LEADING and TRAILING SEPARATE Clause</i>
all	ALIGNED RIGHT attribute		yes	
all	all	Rename of program, Set to constant	yes	<i>COBOL Mapping Editor and example COBOL Server with Multiple Functions for CICS Channel Container</i>   CICS Large Buffer (Same   Different) <sup>(1)</sup>   IMS MPP (IMS Connect)   IMS BMP   Batch   Micro Focus.
all	all	Suppress	yes	<i>COBOL Mapping Editor</i>
other combinations			no	

**Notes:**

1. COBOL server programs use either the same data structure on input and output or overlay the input data structure with a different output data structure. See *COBOL Mapping Editor*.

**COBOL Wrapper**

A server mapping file (EntireX Workbench file with extension .cvm or .svm) is generated by the *COBOL Wrapper* if an RPC server is generated <sup>(1)</sup> and at least one IDL program meets the criteria in the table below. The type of server mapping (server-side with extension .svm or client-side with extension .cvm) is defined in a preference that applies to the entire EntireX Workbench (Eclipse) workspace. See [How to Set the Type of Server Mapping Files](#).

Interface Type	IDL Type	COBOL Wrapper	Server Mapping Required	More Information
CICS Large Buffer	all		yes	<i>CICS with DFHCOMMAREA Large Buffer Interface</i> under <i>COBOL Server Interface Types</i> in the COBOL Wrapper documentation
CICS Channel Container	all		yes	<i>CICS with Channel Container Calling Convention</i>
IMS BMP	all		yes	<i>IMS BMP with Standard Linkage Calling Convention</i>
Micro Focus	I2 or I4		yes	<i>Micro Focus with Standard Linkage Calling Convention</i>   <i>IDL Data Types</i> under <i>Software AG IDL File</i> in the IDL Editor documentation
all	IDL unbounded array		yes	<i>array-definition</i> under <i>Software AG IDL Grammar</i> in the IDL Editor documentation
all	IDL unbounded group		yes	<i>group-parameter-definition</i> under <i>Software AG IDL Grammar</i> in the IDL Editor documentation
all	all	IDL program name is not a valid COBOL name and is therefore adapted, or the COBOL program name is customized	yes	<i>Customize Automatically Generated Server Names</i> under <i>Generating COBOL Source Files from Software AG IDL Files</i> in the COBOL Wrapper documentation
other combinations			no	

<sup>(1)</sup> Server mapping files are never generated for RPC clients.

## Migrating Server Mapping Files

This section covers the following topics:

- [Introduction](#)
- [Step 1: Rename the Server-side Mapping File](#)
- [Step 2: Remove the Server-side Mapping Files on Target RPC Server](#)

### ■ Step 3: Rebuild and Deploy all RPC Clients

## Introduction

Server-side mapping files (EntireX Workbench files with extension .svm) can be migrated to client-side mapping files (EntireX Workbench files with extension .cvm).



**Note:** Client-side mapping files are not supported by RPC clients generated with the *DCOM Wrapper* and *COBOL Wrapper*.

All EntireX components involved in the migration must be version 9.7 or higher:

- the target RPC server z/OS (CICS | Batch | IMS), CICS ECI, IMS Connect, Micro Focus)
- the webMethods EntireX Adapter. See EntireX Adapter documentation under <http://documentation.softwareag.com> > *webMethods Product Line*
- the RPC client runtimes

## Step 1: Rename the Server-side Mapping File

Rename the extension .svm to .cvm in the EntireX Workbench. This results in a client-side mapping file.

## Step 2: Remove the Server-side Mapping Files on Target RPC Server

Remove the server-side mapping files in the server-side mapping container of the target RPC server. See *Undeploying Server-side Mapping Files to the RPC Server* in the respective sections of the documentation.



**Note:** For IMS Connect and CICS ECI connections with webMethods EntireX Adapter for Integration Server, this step is not required.

## Step 3: Rebuild and Deploy all RPC Clients

1. Re-create (wrap, build, compile etc.) all involved RPC clients <sup>(1)</sup> using the related IDL file to wrap the client-side mapping files into the client interface objects. See *EntireX Wrappers*.
2. Test the RPC clients with client-side mapping files.
3. If necessary, re-deploy the RPC clients with client-side mapping files.

<sup>(1)</sup> This includes all variants of RPC connections of the webMethods EntireX Adapter. See *webMethods Integration Server Wrapper*.

## Source Control of Server Mapping Files

---

Because server mapping files (EntireX Workbench files with extension .cvm or .svm) contain text data only, a server mapping file is text-based (although it is not intended for human consumption). Therefore, you can include it in your source control management together with the IDL file and the COBOL source(s) as a triplet that should always be kept in sync.

## Comparing Server Mapping Files

---

For server mapping files (EntireX Workbench files with extension .cvm or .svm), you can use a third party file/text compare tool to check if two files are identical.

A server mapping entry (corresponding to a line in a server mapping file) contains a creation timestamp at offset 276 (decimal) in the format *YYYYMMDDHHIISS.T*. The precision is 1/10 of a second.

# 5

## Server Mapping Deployment Wizard

---

■ Introduction .....	27
■ Using .....	27
■ Preferences .....	31
■ Command-line Mode .....	34

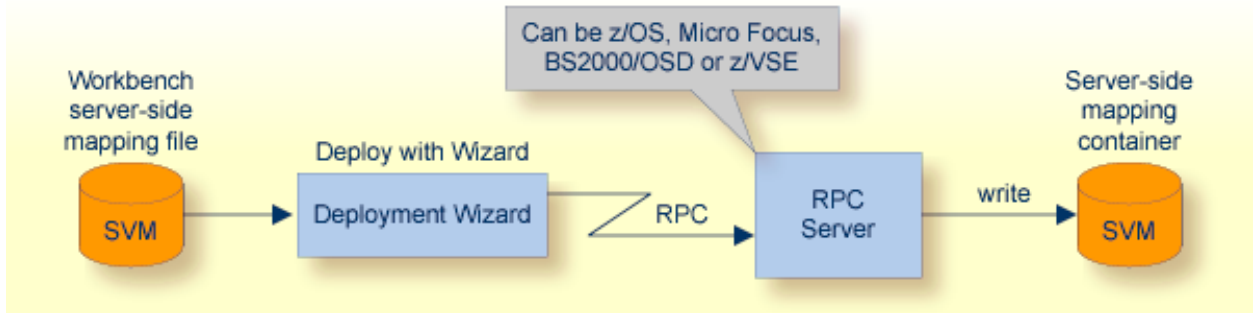
See also *Deploying Server-side Mapping Files to the RPC Server* for CICS ECI | IMS Connect.



**Note:** To deploy server mapping files to the webMethods EntireX Adapter you need to update your Adapter connection. See *Step 3: Select the Connection Type* in the Integration Server Wrapper documentation.



## Introduction



Deploying with the wizard requires an active RPC server. Also, the Deployment Service of the RPC server must be properly configured. See the platform-specific documentation for more information:

- z/OS, see Deployment Service in the respective RPC server documentation.
- UNIX or Windows for Micro Focus COBOL, see *Deployment Service* in the Micro Focus RPC Server.
- BS2000/OSD, see *Deployment Service* in the BS2000/OSD Batch RPC Server documentation.
- z/VSE, see Deployment Service in the respective RPC server documentation.

## Using

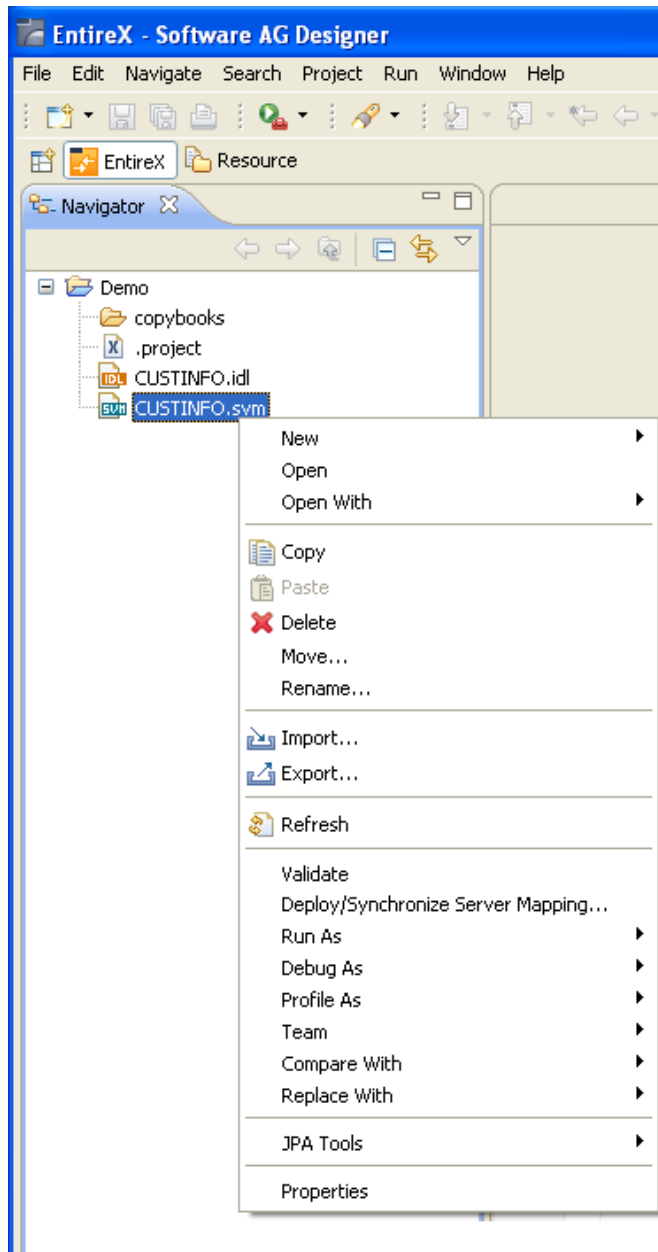
To deploy a server-side mapping file with the wizard, follow the steps below:

- Step 1: Start the Wizard
- Step 2a: Create a New Deployment Environment
- Step 2b: Define the Connection to the Deployment Service and Deploy
- Step 3: Select an Existing Deployment Environment and Deploy

A server-side mapping file is an EntireX Workbench file with extension `.svm`. See [Server Mapping Files for COBOL](#).

## Step 1: Start the Wizard

To start the Server Mapping Deployment Wizard, select a server-side mapping file and from the context menu choose **Deploy/Synchronize Server Mapping...**. Alternatively, you can use the context menu of the IDL file and choose **COBOL > Deploy/Synchronize Server Mapping...**



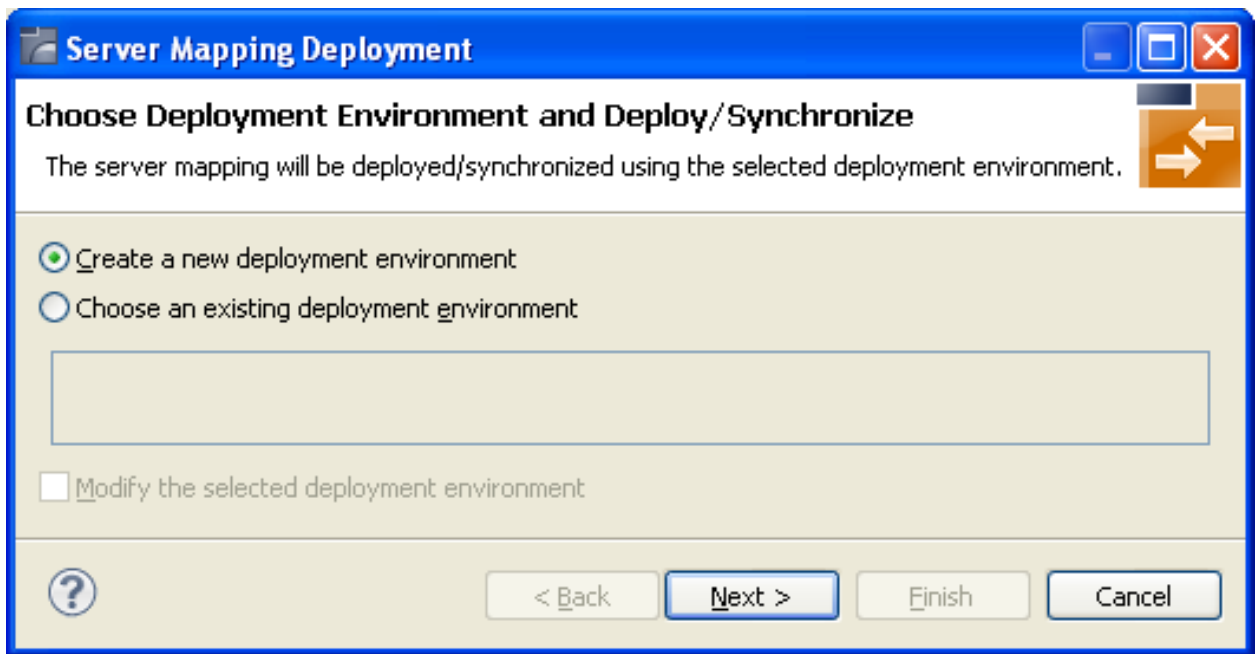
To continue, press **Next** with one of the following choices:

- If you are using the Server Mapping Deployment Wizard for first time with no predefined deployment environment preferences, continue with [Step 2a: Create a New Deployment Environment](#) below.

- If deployment environments are already defined, you may also continue with [Step 3: Select and Existing Deployment Environment and Deploy](#).

### Step 2a: Create a New Deployment Environment

If no deployment environments are defined, you only have the option to create a new deployment environment.



Select **Create a new deployment environment** and press **Next** to continue with [Step 2b: Define the Connection to the Deployment Service and Deploy](#).

### Step 2b: Define the Connection to the Deployment Service and Deploy

Use this page to define a connection to the deployment service of the RPC server.

The screenshot shows a Windows-style dialog box titled "Server Mapping Deployment" with a subtitle "Remote Deployment Environment". Below the subtitle is the instruction "Define the connection to the deployment service to push server mapping files". The dialog is divided into three main sections: "Broker Parameters", "EntireX Authentication", and "RPC Server Authentication". The "Broker Parameters" section contains "Broker ID" (with a dropdown arrow) and "Server Address" (with a dropdown arrow and an "Edit..." button). The "EntireX Authentication" section contains "User ID" and "Password" fields. The "RPC Server Authentication" section contains "RPC User ID" and "RPC Password" fields. Below these is a "Filter Settings" section with a "Timeout (Seconds)" field. At the bottom, there is a help icon (question mark), and four buttons: "< Back", "Next >", "Finish", and "Cancel".

**Server Mapping Deployment**

**Remote Deployment Environment**

Define the connection to the deployment service to push server mapping files

**Broker Parameters**

Broker ID: \* ibm2:6025

Server Address: \* RPC/BATCH/DEPLOYMENT **Edit...**

**EntireX Authentication**

User ID:

Password:

**RPC Server Authentication**

RPC User ID:

RPC Password:

**Filter Settings**

Timeout (Seconds): 60

? < Back Next > Finish Cancel

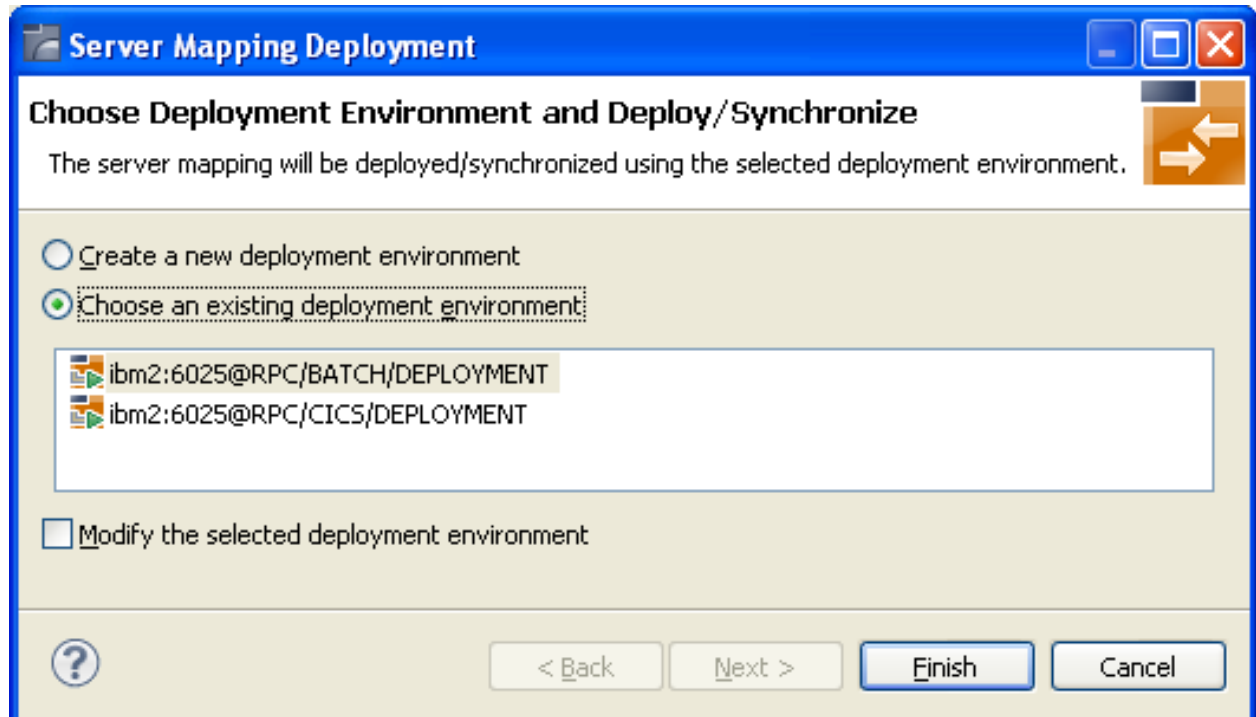
Enter the required fields:

1. **Broker Parameters** Broker ID and Server Address, which will have the default format. The last part (broker service) of the server address must always be "DEPLOYMENT".
2. The **EntireX Authentication** parameters describe the settings for the broker. These parameters apply if the *broker* is running with EntireX Security. See *Which EntireX Security Solution*.
3. The **RPC Server Authentication** parameters describe the settings for the RPC server. These parameters apply if the *RPC server* is running with security. See *Impersonation* in the respective RPC Server documentation.
4. The given **Timeout** value must be in the range from 1 to 9999 seconds (default: 60).

Press **Finish** to deploy. Deployment of the server mapping is successful if the wizard ends. No confirmation message is given.

### Step 3: Select and Existing Deployment Environment and Deploy

Use this page to select the deployment environment (i.e. the RPC server) to which you want to deploy.



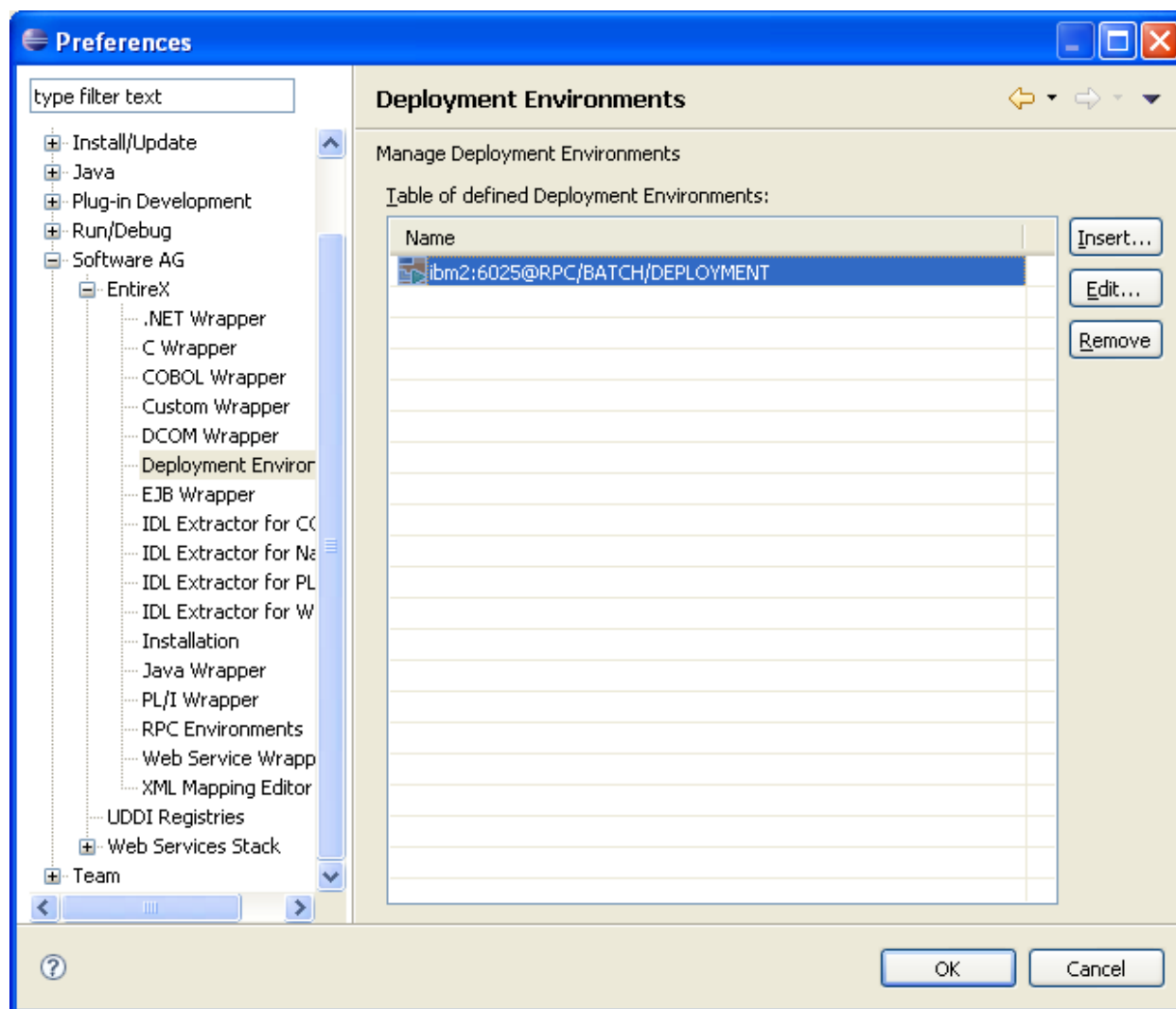
Check the option **Choose an existing deployment environment** and select a deployment environment from the list. Press **Finish** to deploy. Deployment is successful if the wizard ends. No confirmation message is given.

## Preferences

In the preferences for the Server Mapping Deployment Wizard you define deployment environments, a connection to the Deployment Service of the RPC server. See Deployment Service in the respective RPC server sections of the documentation The following sections are offered:

- [Create a New Deployment Environment](#)
- [Edit an Existing Deployment Environment](#)
- [Remove an Existing Deployment Environment](#)

The deployment environment is managed from the deployment environment **Preferences** page. The deployment environments can be created, edited and removed. The deployment environment will be used for the selection lists in the Deployment Wizard. To manage these deployment environments, open the **Preferences** page:



## Create a New Deployment Environment

➤ To create a new deployment environment

- Press **Insert**.

**Server Mapping Deployment**

**Remote Deployment Environment**

Define the connection to the deployment service to push server mapping files

**Broker Parameters**

Broker ID:

Server Address:

**EntireX Authentication**

User ID:

Password:

**RPC Server Authentication**

RPC User ID:

RPC Password:

**Filter Settings**

Timeout (Seconds):

### Edit an Existing Deployment Environment

➤ To edit an existing deployment environment

- Select the table row and press **Edit**. If multiple entries are selected, the first entry is used.

**Deployment Environments**

**Deployment Environment**  
Edit and update the deployment environment

**Broker Parameters**

Broker ID:

Server Address:

**EntireX Authentication**

User ID:

Password:

**RPC Server Authentication**

RPC User ID:

RPC Password:

**Filter Settings**

Timeout (Seconds):

## Remove an Existing Deployment Environment

➤ To remove an existing deployment environment

- Select the table row and press Remove. Multiple selections are possible.

## Command-line Mode

The command `-deploy:cobol` is provided to deploy mapping information contained in server-side mapping files, using the EntireX Workbench in command-line mode. See *Using the EntireX Workbench in Command-line Mode* for general information.

To undeploy previously deployed server mapping information, remove the server-side mapping file (.svm) and execute the command `-deploy:cobol` with the IDL file only.

This section covers the following topics:

- [Command-line Options](#)



■ Example

## Command-line Options

Task	Command	Option	Description
Deploy SVM files.	-deploy:cobol	-environment	Target environment. Name of the COBOL deployment environment or an RPC server description.
		-brokeruser	User used for broker authentication (optional).
		-brokerpassword	Password used for broker authentication (optional).
		-rpcuser	User used for RPC server authentication (optional).
		-rpcpassword	Password used for RPC server authentication (optional).



**Note:** Run the command from the directory containing the IDL file and the corresponding server-side mapping file (.svm). If no server-side mapping file is found, the previously deployed server mapping information related to the IDL file will be removed on the server side (undeployed). See *Undeploying Server-side Mapping Files to the RPC Server* in the respective sections of the documentation.

## Example

```
-deploy:cobol /SVMDeployTests/idls/basicodo.idl /SVMDeployTests/idls/basicdt.idl ↵
/SVMDeployTests/idls/basicarr.idl
-environment ibm2:3980@RPC/RPCALL/DEPLOYMENT
-brokeruser EXXUSR1
-brokerpassword EXX$PWD1
```



## 6 EntireX IDL Tester

---

■ Introduction .....	38
■ Calling the IDL Tester .....	38
■ Using a Broker with EntireX Security .....	41
■ Using RPC Servers with Natural Security .....	41



**Note:** The Java Wrapper also provides a method of testing IDL files. This method was available in earlier EntireX versions and is useful if you need to generate test classes into a Java project. See *Using the IDL Tester* under *Using the Java Wrapper*.

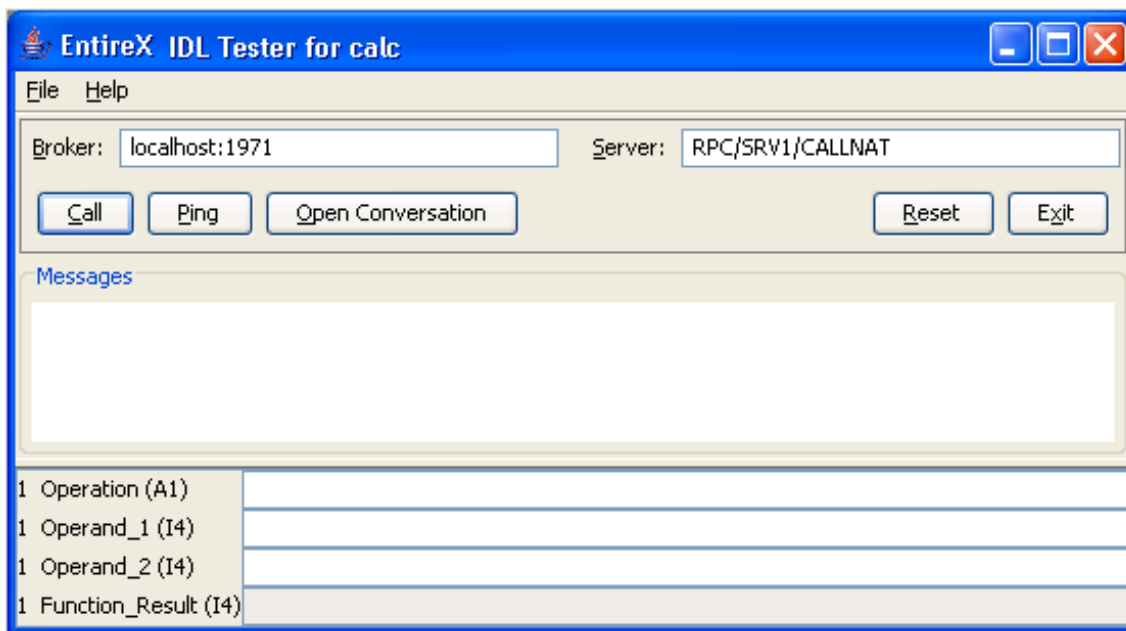
## Introduction

The IDL Tester is an easy-to-use utility to check the accessibility of the Web service from the EntireX Broker via the XML/SOAP RPC server. It acts as an RPC client application, taking as input an IDL file. It verifies the mapping of the RPC data to the Web services data in the XML/SOAP mapping file.

## Calling the IDL Tester

### ➤ To call the IDL Tester

- Select an IDL file, and from the context menu, choose **Software AG IDL Tester**. This launches the IDL Tester.



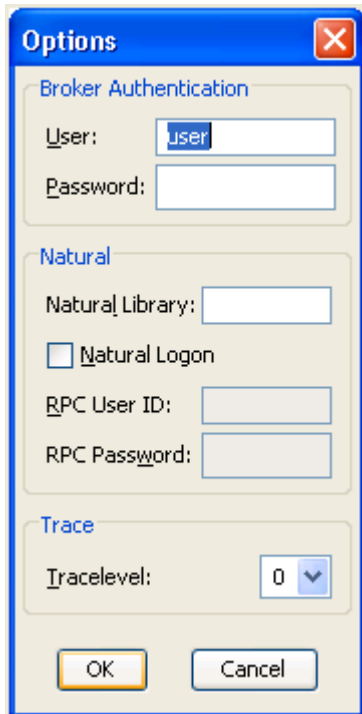
The dialog contains fields for Broker ID and server address and buttons, a message area for general output and error messages, and a parameter area with the input and output parameters. The fields for the input parameters have a white background and the fields for the output parameters are disabled and have a gray background.

Broker ID and server address are displayed as specified in the properties of the IDL file; they can be modified. To modify the server address, it is sufficient to enter the server; RPC/CALLNAT will be added automatically.

Button	Explanation
<b>Call</b>	Perform the remote procedure call.
<b>Ping</b>	Ping the broker and the RPC server.
<b>Open Conversation</b>	Open a conversational RPC (only visible if no conversation is open).
<b>Commit Conversation</b>	Close the conversational RPC and commit the conversation (only visible after <b>Open Conversation</b> ).
<b>Abort Conversation</b>	Close the conversational RPC and abort the conversation (only visible after <b>Open Conversation</b> ).
<b>Reset</b>	Reset the message area and the parameters.
<b>Exit</b>	Exit the IDL Tester.

The bottom of the dialog contains text fields for the parameters of the Software AG IDL file. These fields are prefixed with the group level, field name and type. **IN** and **INOUT** parameters can be edited, **OUT** parameters cannot be modified. The fields for **INOUT** and **OUT** parameters are updated after a successful call. Array elements must be separated by a semicolon. The last array element behind a semicolon will be used to fill up the array completely, e.g. (I4/5) and value 1;2 results in 1;2;2;2;2, but value 1;2; results in 1;2;;;

The **File** Menu contains the entries **Options** and **Exit**. The **Options** dialog allows setting user and password for the Broker Authentication. In addition, for communication with Natural RPC Server, the Natural library can be set and if Natural logon is enabled, user ID and password for RPC Authentication can be set.



The image shows a Windows-style dialog box titled "Options" with a red close button in the top right corner. The dialog is divided into three sections: "Broker Authentication", "Natural", and "Trace".

- Broker Authentication:** Contains two text input fields. The first is labeled "User:" and contains the text "user". The second is labeled "Password:" and is empty.
- Natural:** Contains four controls: a text input field labeled "Natural Library:", an unchecked checkbox labeled "Natural Logon", a text input field labeled "RPC User ID:", and a text input field labeled "RPC Password:".
- Trace:** Contains a text input field labeled "Tracelevel:" followed by a dropdown menu currently showing the value "0".

At the bottom of the dialog are two buttons: "OK" and "Cancel".

➤ **To execute the remote call via EntireX Broker**

- Use the **Call** button or press `Return` in one of the input parameter fields.

If the Broker returns errors (a `BrokerException` is thrown), the error message is displayed in the Messages area.

➤ **To ping the Broker and the RPC server**

- Use the **Ping** button.

➤ **To delete the entries in the message area and the parameter fields**

- Use the **Reset** button.

## Using a Broker with EntireX Security

---

When using a Broker which runs with EntireX Security, modify user ID and password accordingly.

## Using RPC Servers with Natural Security

---

When using Natural Security, enable Natural logon and set the user ID and the password.





# 7

## Using EntireX Custom Wrappers

---

■ Define EntireX Custom Wrappers .....	44
■ Running a Custom Wrapper .....	51

The EntireX Custom Wrappers are user-configurable, template-based wrappers and need:

- a Software AG IDL file
- a template (for example, client or server)
- the IDL Compiler

Naturally, existing *.plugin* files from former EntireX installations, called EntireX Workbench Plugins, can be migrated. The Custom Wrapper definitions are stored in the current Eclipse workspace and can be managed in the preferences. Any changes in the Custom Wrapper definitions require a restart of the Workbench to take effect. This chapter covers the following topics:

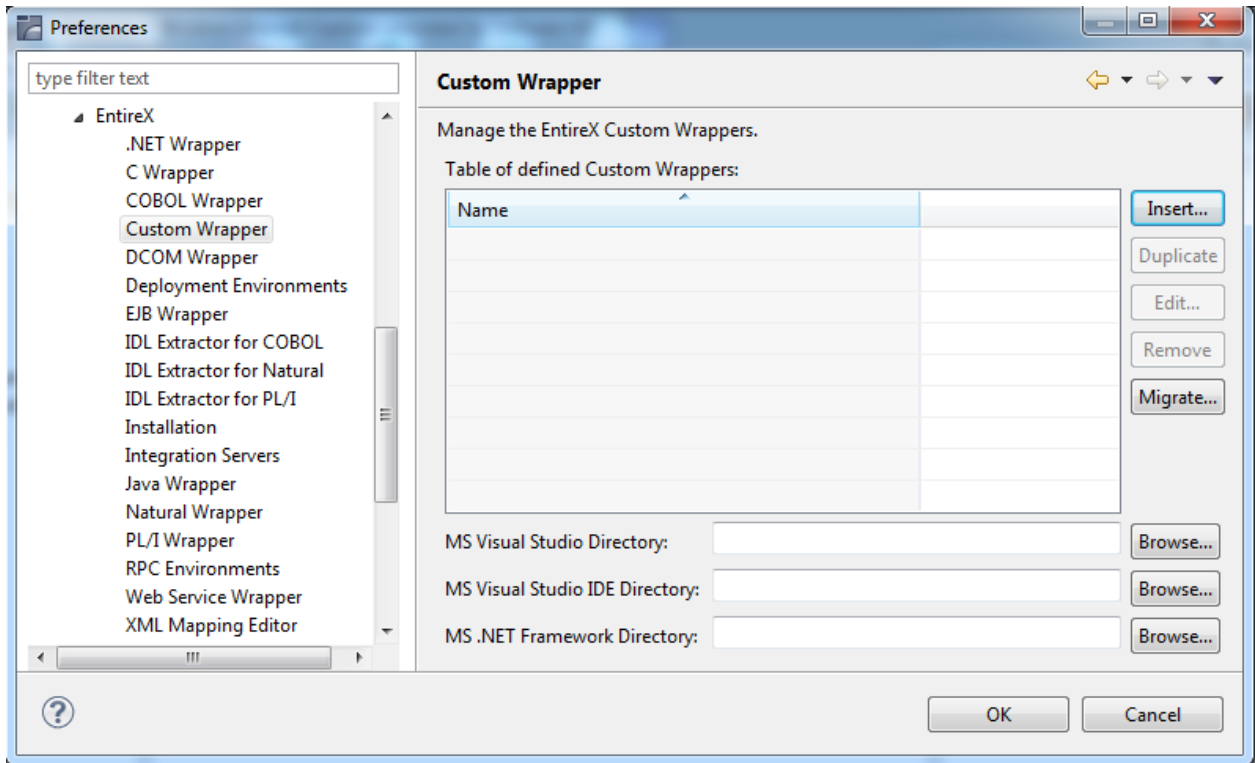
## Define EntireX Custom Wrappers

---

The EntireX Custom Wrappers are managed in the Custom Wrapper preferences page.

The central panel lists all known (active or inactive) Custom Wrappers, that is, all Custom Wrappers that are found in the current workspace. You can create a new empty Custom Wrapper, copy, edit or remove an existing Custom Wrapper or migrate your existing *.plugin* file from a former EntireX installation.

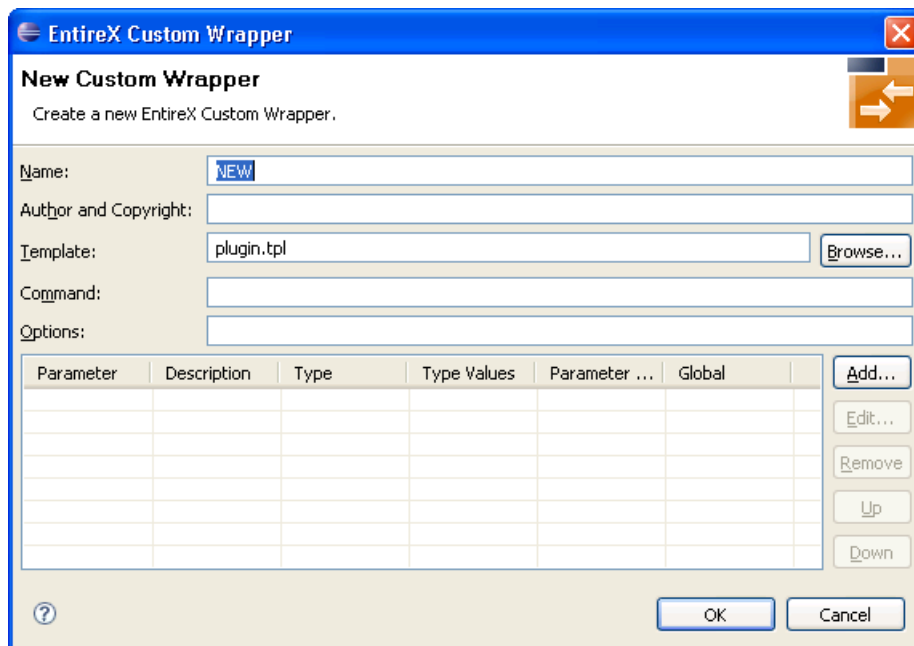
- [Creating a New Custom Wrapper](#)
- [Parameters](#)
- [Parameter Values](#)
- [Wildcards](#)



## Creating a New Custom Wrapper

➤ To create a new Custom Wrapper

- 1 Choose **Insert...**



- 2 Enter the fields. The Name is a required field and must be unique, because it is the identifier for the Custom Wrapper. This name occurs on the Custom Wrapper Properties page and will be used for the command line with the prefix minus sign.

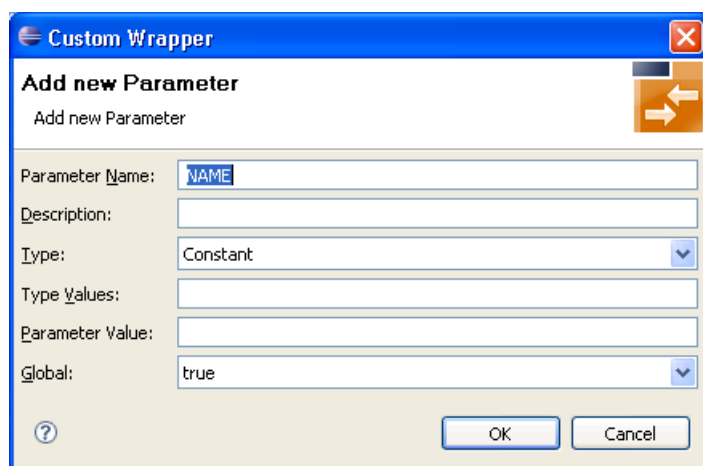
Field	Description
Name	Used as the Custom Wrapper menu item text.
Author and copyright	Important if you want to share your Custom Wrapper with other users.
Template	Name of the template file to be used by the <i>Software AG IDL Compiler</i> in the IDL Editor documentation. Use a fully qualified file name.
Command	Executable command file name. Default is empty and means the <i>Software AG IDL Compiler</i> in the IDL Editor documentation will be executed.
Options	Batch parameters. They are sent to the <i>Software AG IDL Compiler</i> in the IDL Editor documentation.
Parameter	Parameters (constant or modifiable) to call the Custom Wrapper.

- 3 Optionally, add some parameters as described in the following sections.

#### ➤ To add parameters

##### ■ Choose Add...

A new dialog with default values is displayed. See section [Parameters](#) for a description of the individual fields. Modifiable parameters automatically appear with an appropriate label and GUI widget on the Custom Wrapper IDL properties tab.



#### ➤ To edit parameters (see [Parameters](#))

- 1 Select the parameter to edit in the table.

## 2 Choose **Edit...**

or

Double click on the parameter in the table.

A new dialog with the current parameter values is displayed. See section [Parameters](#) for a description of the individual fields. For all strings in the fields **Type Values** and **Parameter Value**, you can also use wildcards. Wildcards are like variables for actual values that may change with the platform or in other properties tabs. See the list of [Wildcards](#).

## 3 Choose **OK** to save your entries and close the dialog or **Cancel** to close the dialog without saving.

### ➤ To remove parameters

#### 1 Select the parameters to remove in the table.

#### 2 Choose **Remove**.

Multiple selections are possible.

### ➤ To change the parameter order

#### 1 Select the parameter to edit in the table.

#### 2 Use the **Up** and **Down** buttons to change the order of the parameters.

## Parameters

Parameters consist of the following fields:

Field	Purpose
Parameter	The parameter identifier, as required by the <i>erxidl</i> template (must not contain whitespace characters; often in uppercase).
Description	The textual description of this parameter, as displayed in the associated Custom Wrapper IDL properties tab. Human-readable, may contain whitespace characters and short examples.
Type	Dialog box of possible GUI representations of the <a href="#">Parameter Values</a> .
Type Values	The possible values that may be assigned to the parameter, in the form <code>&lt;parametername&gt;=&lt;value&gt;</code> . Values are separated by a semicolon.
Parameter Value	Default value for the GUI representation, must be one of the values listed in the <b>Type Values</b> field.
Global	Flag for the parameter value. True (default) means the parameter value is for all IDL files, false means the parameter value is IDL specific (stored in IDL properties).

## Parameter Values

Parameter “types” are GUI representations of the parameter values in the IDL properties tab for this Custom Wrapper. They can be:

Entry	Purpose, Usage
Check box	Will draw a check box in the Custom Wrapper IDL <b>properties</b> tab. <b>Type Values</b> must have two values, separated by a semicolon. The first value is taken if the check box is checked, the second value is taken if the check box is cleared.
Combo box	Will draw a combo box (drop-down list) in the Custom Wrapper IDL properties tab. <b>Type Values</b> must have at least one entry, or multiple entries separated by semicolon. An entry may be: <ul style="list-style-type: none"><li>■ a simple string (without the “=” character), which is displayed as an entry in the box and is sent to the Software AG IDL Compiler.</li><li>■ a pair “&lt;val&gt;=&lt;string&gt;”, where &lt;string&gt; is displayed in the combo box, but &lt;val&gt; is sent to the Software AG IDL Compiler.</li></ul>
Constant	Will not generate a GUI element in the associated IDL <b>properties</b> tab. <b>Type Values</b> just has one string, which is sent to the Software AG IDL Compiler.
Text	Will show a text field in the associated Custom Wrapper IDL properties tab. The text field content is taken for the Software AG IDL Compiler command line construction. If whitespace characters are typed in the text field, the Software AG IDL Compiler command line portion is protected by double quotes. Type values may contain a string representing as default value for the text field.

## Wildcards

Wildcards start with the % (percent sign). Implemented wildcards:

Wildcard Name	Purpose	Example Value
%brokerid	Get the Broker ID from the <b>General</b> tab.	localhost:1971
%server	Get the server address from the <b>General</b> tab.	RPC/SRV1/CALLNAT
%serverclass	Get the server class identifier from the <b>General</b> tab.	RPC
%servername	Get the server name from the <b>General</b> tab.	SRV1
%service	Get the service identifier from the <b>General</b> tab.	CALLNAT
%idlfile	Get the current IDL file (as absolute path name) as selected in the EntireX Workbench.	C:\Examples\example.idl
%idlname	Get the current IDL file (just the file name with extension, no path) as selected in the EntireX Workbench.	example.idl
%pureidlname	Get the current IDL file name without path and without the file extension.	example
%idlpath	Get the current IDL file path (without the IDL file name) as selected in the EntireX Workbench.	C:\Examples
%xmlfile	Get the current XML mapping file name from the XML tab.	C:\Examples\example.xmm
%msdotnetenv	Path of Microsoft Visual Studio environment as set in the <b>Tools Options</b> menu item.	C:\Program Files\Microsoft Visual Studio 10\Common7\IDE\
%netfrmdir	Path for installation of the .NET framework.	C:\WINDOWS\Microsoft.NET\Framework\v2.0.50727
%version	Get the EntireX version.	8.0
%osname	Get the operating system name, taken from the Java system property <i>os.name</i> .	Windows XP
%osarch	Get the operating system architecture, taken from the Java system property <i>os.arch</i> .	x86
%osversion	Get the operating system version, taken from the Java system property <i>os.version</i> .	5.1
%fileseparator	Get the platform-specific file separator character, taken from the Java system property <i>file.separator</i> .	\

Wildcard Name	Purpose	Example Value
%fileencoding	Get the platform-specific file encoding, taken from the Java system property <i>file.encoding</i> .	Cp1252
%pathseparator	Get the platform-specific path separator character, taken from the Java system property <i>path.separator</i> .	;
%username	Get the current user name, taken from the Java system property <i>user.name</i> .	administrator
%userhome	Get the assigned user home directory, taken from the Java system property <i>user.home</i> .	C:\Documents and Settings\administrator
%userdir	Get the current user directory, taken from the Java system property <i>user.dir</i> .	C:\Documents and Settings\administrator\My Documents

### » Duplicate an existing Custom Wrapper

- 1 Select the Custom Wrapper in the list.
- 2 Proceed as described in [Creating a New Custom Wrapper](#) and press the **Duplicate** button instead of the **Insert...** button.

A new Custom Wrapper named *Copy of <name>* is displayed in the list.

- 3 Modify the entries as described in [Creating a New Custom Wrapper](#).

### » Edit an existing Custom Wrapper

- 1 Select the Custom Wrapper in the list.
- 2 Proceed as described in [Creating a New Custom Wrapper](#) and select the **Edit...** button instead of the **Insert...** button
- 3 Modify the entries as described in [Creating a New Custom Wrapper](#).

### » Remove an existing Custom Wrapper

- 1 Select the Custom Wrapper in the list.
- 2 Use the **Remove** button

### » Migrate an existing .plugin File from a previous EntireX Installation

- 1 Proceed as described in [Creating a New Custom Wrapper](#) and select the **Migrate...** button instead of the **Insert...** button.
- 2 Browse to the location of the .plugin file and select the file to migrate.



- 3 In the ensuing dialog, modify the entries as described in [Creating a New Custom Wrapper](#).
- 4 Make sure the template file can be accessed correctly.

## Running a Custom Wrapper

---

### ➤ To start the Custom Wrapper in GUI

- 1 Select an IDL file.
- 2 Open the context menu, choose **Other > Generate Via Template** and select the desired item (for example, **New**).

When the Custom Wrapper is started, the EntireX Workbench starts the Software AG IDL Compiler and feeds it with a template, the IDL file name and (optional) parameters.

The parameters are inserted for the Software AG IDL Compiler in the form `<parametername>=<value>`. If wildcards were used for the values, they are resolved to the actual values when the Custom Wrapper was called.

### ➤ To start the Custom Wrapper in Command Line

- See *Using the EntireX Workbench in Command-line Mode* for the general syntax of the command line.

The command for the Custom Wrapper is `-xxx`, where `xxx` is the case-sensitive name of the Custom Wrapper. If the name contains blanks, use `-"xxx"`.

Example:

```
-NEW /Demo/example.idl
```

The result of the Custom Wrapper is written to Standard Out.



# 8

## Using the EntireX Workbench in Command-line Mode

---

■ Command Line under Windows .....	54
■ Command Line under Linux .....	55
■ List of all Commands .....	55

The EntireX Workbench can also be used from a command line. The command entered depends on your operating system.

- Under Windows, the command line is available with the starter *workbench.bat*.
- Under Linux, the command line is available with script *workbench.bsh*.
- Under both operating systems, the command line is also available with the command for Eclipse using the Java Runtime.

In all alternatives, a command is followed by a list of file names and a list of options. The file names may contain an asterisk (\*) as a wildcard. The options are key-value pairs, where the key starts with a hyphen. The command selects the Wrapper or Extractor to use. The detailed options for each command are described in the respective Wrapper or Extractor section. Using *-help* as command lists all available commands with a short description. Using *-help <command>* lists the options of the command.

For a detailed description of each Wrapper or Extractor, see the documentation of this component. Throughout these detailed descriptions we use *<workbench>* as a general placeholder for the actual starter of the Workbench. This can be *workbench.bat*, *workbench.bsh*, or the Eclipse starter.

## Command Line under Windows

---

Enter the following command, replacing *<EntireX HOME>* with your EntireX installation directory:

```
<EntireX HOME>\bin\workbench.bat <command> [ <file> [ <file> ... ] ] [<options>]
```

This is the preferred method to start the EntireX Workbench. Alternatively, you can start the EntireX Workbench with

```
"%ECLIPSE_HOME%\eclipse" -application  
com.softwareag.entirex.ide.eclipse.EntireXCommand -data %WORKSPACE% -nosplash  
<command> [ <file> [ <file> ... ] ] [<options>]
```

where *ECLIPSE\_HOME* is the Eclipse installation directory  
*WORKSPACE* is the Eclipse workspace directory.

## Command Line under Linux

Enter the following command:

```
/opt/softwareag/EntireX/bin/workbench.bsh <command> [ <file> [ <file> ... ] ]
[<options>]
```

or

```
eclipse -vm $ECLIPSE_HOME/bin/ -application
com.softwareag.entirex.ide.eclipse.EntireXCommand -data $WORKSPACE -nosplash
<command> [ <file> [ <file> ... ] ] [<options>] -vmargs
-Dentirex.license=/opt/softwareag/EntireX/common/conf/LKey/exx97.xml
```

where `ECLIPSE_HOME` is the Eclipse installation directory  
`WORKSPACE` is the Eclipse workspace directory.

## List of all Commands

Command	Description	Syntax / Examples
-c:client	Generate an RPC client from an IDL file.	<i>Using the C Wrapper in Command-line Mode</i>
-c:server	Generate an RPC server from an IDL file.	
-cobol:client	Generate a COBOL RPC client from an IDL file.	<i>Using the COBOL Wrapper in Command-line Mode</i>
-cobol:server	Generate a COBOL RPC server from an IDL file.	
-dcom:generate	Generate the DCOM Wrapper object(s) for the specified IDL file(s).	<i>Using the DCOM Wrapper in Command-line Mode</i>
-ejb:generate	Generate the EJB sources for the specified IDL file(s).	<i>Using the Wrapper for EJB in Command-line Mode</i>
-deploy:cobol	Deploy server-side mapping files (Workbench file with extension .svm) to the specified environment. See <a href="#">Server Mapping Files for COBOL</a> .	<b>Command-line Mode</b>
-extract:natural	Extract the Natural sources or objects from a Natural RPC Server.	<i>Using the IDL Extractor for Natural in Command-line Mode</i>

Command	Description	Syntax / Examples
-extract:pli	Extract the PL/I sources from an RPC Extractor Service.	<i>Using the IDL Extractor for PL/I in Command-line Mode</i>
-extract:wsdl	Extract an IDL file and an XMM file from a Web service.	<i>Using the IDL Extractor for WSDL in Command-line Mode</i>
-extract:xml	Extract an IDL file and an XMM file from an XML Document.	<i>Using the IDL Extractor for XML Document in Command-line Mode</i>
-extract:xsd	Extract an IDL file and an XMM file from an XML Schema.	<i>Using the IDL Extractor for XML Schema in Command-line Mode</i>
-help	List the short description of all commands.	
-java:all	Generate all Java source files for the specified IDL file(s).	<i>Using the Java Wrapper in Command-line Mode</i>
-java:allbeancompliant	Generate all Java source files for the specified IDL file(s). The client object will be JavaBean-compliant.	
-java:client	Generate the Java client(s) for the specified IDL file(s).	
-java:clientbeancompliant	Generate the JavaBean-compliant Java client(s) for the specified IDL file(s).	
-java:server	Generate the Java server(s) for the specified IDL file(s).	
-java:tester	Generate the Java client(s) and tester(s) for the specified IDL file(s).	
-list:natural	List the Natural sources or objects from a Natural RPC Server.	<i>Using the IDL Extractor for Natural in Command-line Mode</i>
-list:pli	List the PL/I sources on an RPC Extractor Service.	<i>Using the IDL Extractor for PL/I in Command-line Mode</i>
-map:soap	Create SOAP-conformant XML mapping for all programs.	<i>Using the XML/SOAP Wrapper in Command-line Mode</i>
-map:xmlattributes	Create attribute-preferred XML mapping for all programs.	
-map:xmlelements	Create element-preferred XML mapping for all programs.	
-map:xmlwithxsd	Create element-preferred XML mapping with XML Schema for all programs.	
-natural:client	Generate Natural RPC client from the specified IDL file.	<i>Using the Natural Wrapper in Command-line Mode</i>
-natural:server	Generate Natural RPC server from the specified IDL file.	

Command	Description	Syntax / Examples
-pli:client	Generate a PL/I RPC client from the specified IDL file.	<i>Using the PL/I Wrapper in Command-line Mode</i>
-pli:server	Generate a PL/I RPC server from the specified IDL file.	
-version	Prints the version and exits.	
-wsdl	Generates WSDL for the specified IDL file(s).	<i>Using the Web Services Wrapper in Command-line Mode</i>
-xml:sample	Create sample XML documents for all programs.	<i>Using the XML/SOAP Wrapper in Command-line Mode</i>





# 9

## Storing IDL Properties in an External File

---

When archiving an EntireX project with the export feature of Eclipse or the check-in feature of a revision control system such as Subversion or CVS, you can use an external properties file to store the properties of your IDL files. These properties are restored from this external file when the project is imported or checked out.



**Note:** This feature is not the default behavior and must be enabled for source and target environment as described below.

### ➤ To enable the creation of external properties files

- 1 Start EntireX Workbench and choose **Window > Preferences > Software AG > EntireX** and check the box **Use external properties file....**
- 2 Modify the properties of your IDL file. If you make any changes to default values, these changes will be stored in a properties file with the name *<name>.idl.xml*.

When you archive your EntireX project using the Eclipse or a revision control system, make sure the external properties file is included for every IDL file. When you recreate your EntireX project in the same or a different environment, the properties of the IDL file are restored from the external properties file. In the target system, the box **Use external properties file...** must also be checked.

