

# EntireX XML Tester

This chapter covers the following topics:

- Introduction to the XML Tester
  - XML Tester Options
  - Using the XML Tester
  - XML Tester for Conversational RPC
- 

## Introduction to the XML Tester

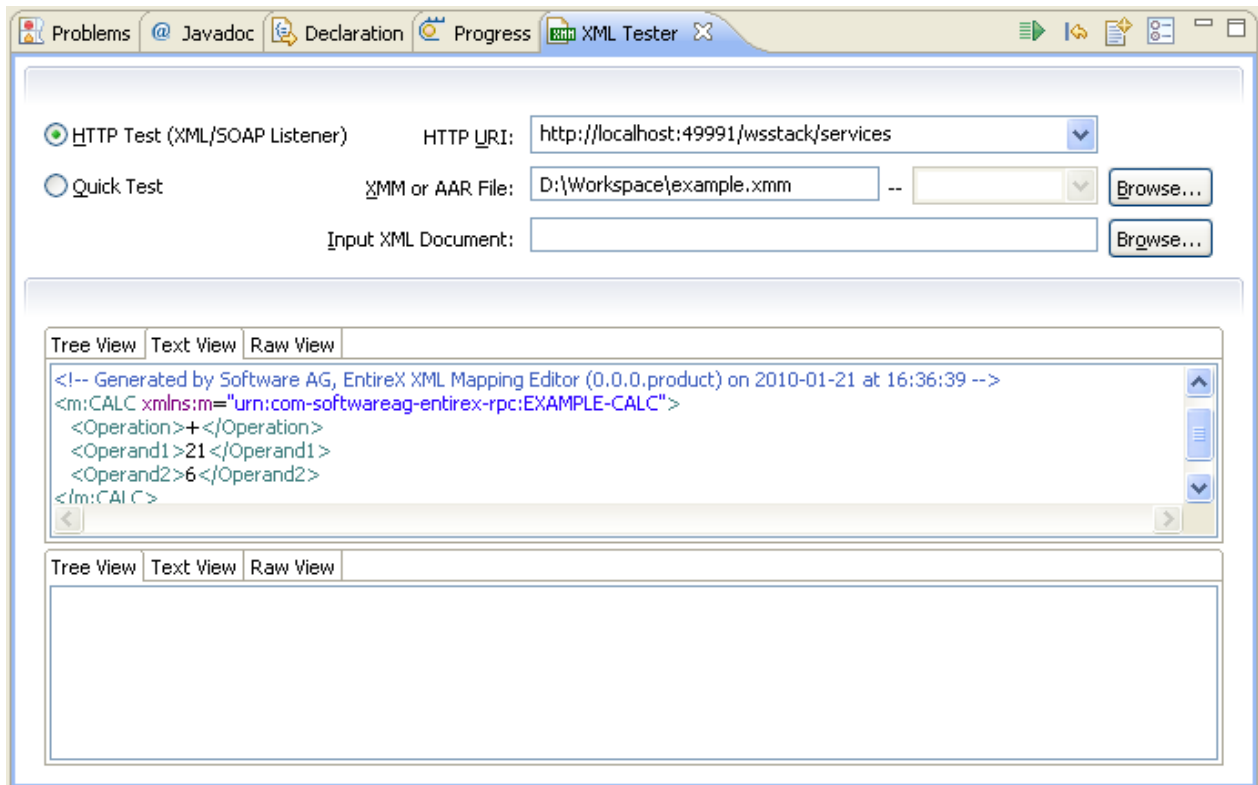
Using the XML Tester you can send an XML document to the EntireX XML/SOAP Listener.

The XML Tester supports drag-and-drop editing, and you can restore the last used session within a workspace. If the mapping file has changed, the views for request and response are cleared.

The XML Tester is provided by the EntireX Workbench as an Eclipse View and can be opened from the XML Mapping Editor or XML/SOAP Wrapper. It is also accessible from **Windows > Show View > Other... > Software AG > XML Tester**. The following test modes are available:





- Quick Test (Using the Java Interface)
- HTTP Test (Using the EntireX XML/SOAP Listener)

See sample screen and description of options below.



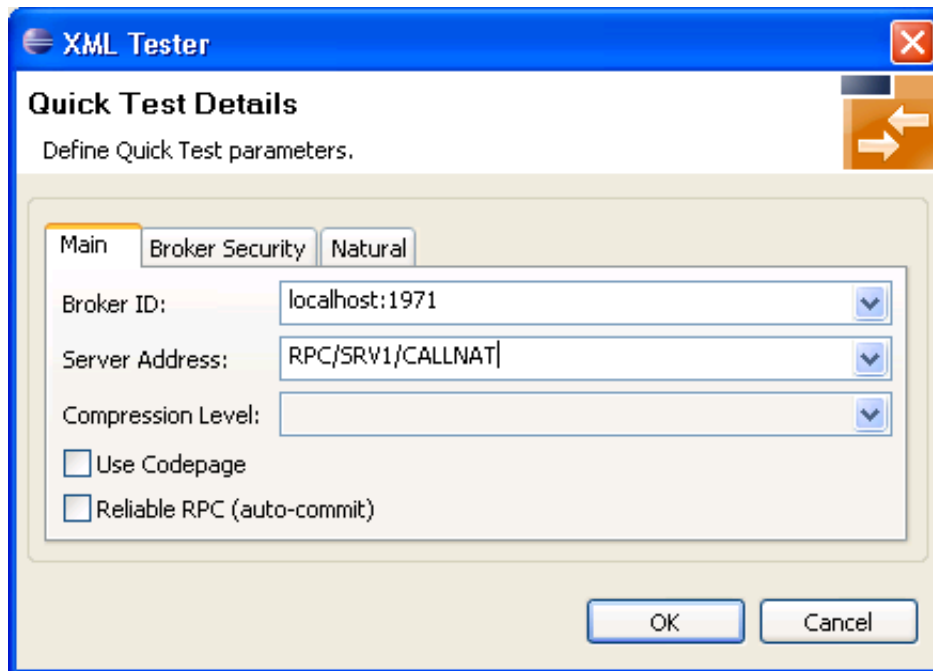
## XML Tester Options

Name	Type	Description
Quick Test	Check box	Check this box to test the Java interface of the XML/SOAP Runtime. If checked, the <b>Settings</b> action will open the <b>Quick Test Details</b> dialog.
XMM or AAR File	Text field	The AAR file, which contains one or more mapping files (XMM files), or the XMM file, which contains the mapping information. Accept absolute path. If the file does not exist, the action <b>Create Sample XML...</b> is disabled. When the file is found, the Broker ID and Server Address are read and the corresponding fields in the <b>Quick Test Details</b> dialog are filled.
	Combo box	Behavior depends on content of field <b>XMM or AAR File</b> : <ul style="list-style-type: none"> <li>• If this field contains an AAR file, this combo is enabled and filled with all the mappings stored in the archive. Select the mapping you want from the list.</li> <li>• If this field contains an XMM file, the combo box is disabled.</li> </ul>

Name	Type	Description
Browse...	Button	Open a <b>File open</b> dialog to select the XMM or AAR file from the file system.
HTTP Test	Check box	Check this box to test the HTTP interface (EntireX XML/SOAP Listener) of the XML/SOAP Runtime. If checked, the <b>Settings</b> action will open the <b>HTTP/HTTPS Parameters</b> dialog.
HTTP URI to contact	Combo box	URI of the EntireX XML/SOAP Listener. Will store the last ten called URLs.
Input XML Document to send	Text field	File name of the XML Document to be sent.
Browse...	Button	Open a <b>File open</b> dialog to select the XML Document file from the file system.
Create Sample XML...	Action 	Open the <b>Create Sample XML...</b> dialog, see below. If the text file for the XMM file does not contain a valid file path, the <b>Create Sample XML...</b> button is disabled.
input - area	Tree/Text/Raw view	Input field for the XML data to be sent to the Broker, this area is filled with the text/tree representation of the selected file, see <b>Input XML Document to send</b> . If empty, the <b>Play</b> action is disabled.
output - area	Tree/Text/Raw view	Output field for the XML data response from the Broker. By default, the response will be displayed in platform encoding. But if the XML data request contains a valid encoding in the XML declaration, this encoding will be used and a tooltip text will inform you of this. This view will also display the status and errors.
Settings	Action 	Open either <b>Quick Test Details</b> or <b>HTTP/HTTPS Parameters</b> dialog. See <b>Quick Test</b> and <b>HTTP Test</b> above.
Play/Stop	Action 	Start the test. This action is disabled if there is no text in the <b>input - area</b> .
Reset	Action 	Reset the input and output areas.

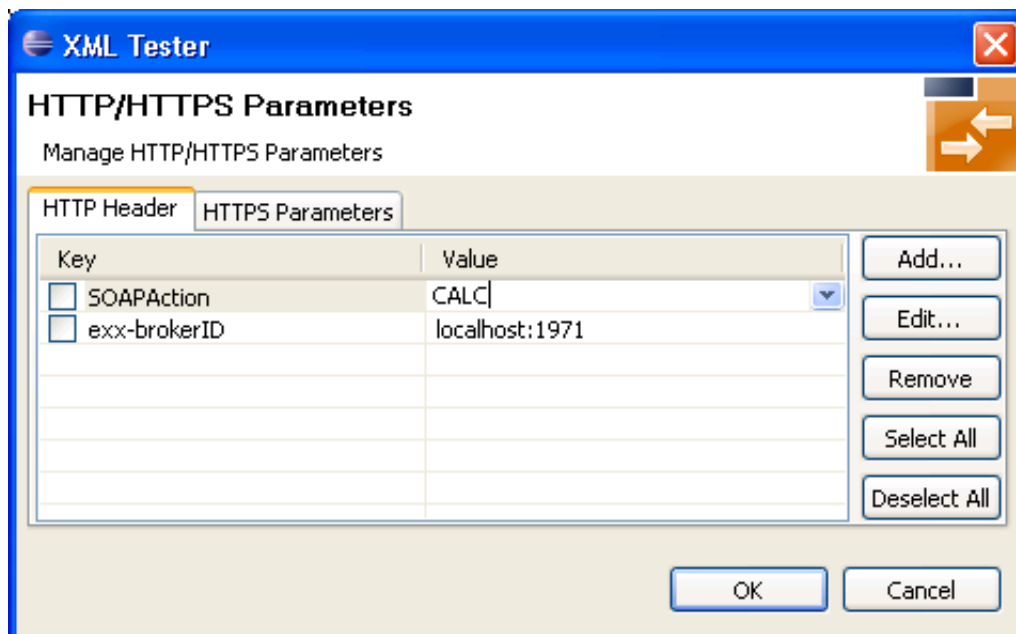
## Quick Test Details Dialog

Use the **Quick Test Details** dialog to change the Quick Test parameters. The Broker ID, Server Address, the Security Settings, the Natural Settings can be modified for this XML Tester session. **Compression Level** is a non-editable box that contains all possible values. **Broker ID** and **Server Address** are editable dialog boxes and hold the last five used values. Use the **Reliable RPC** check box to turn reliable messaging on or off (mode is AUTO-COMMIT). See *Reliable RPC*.

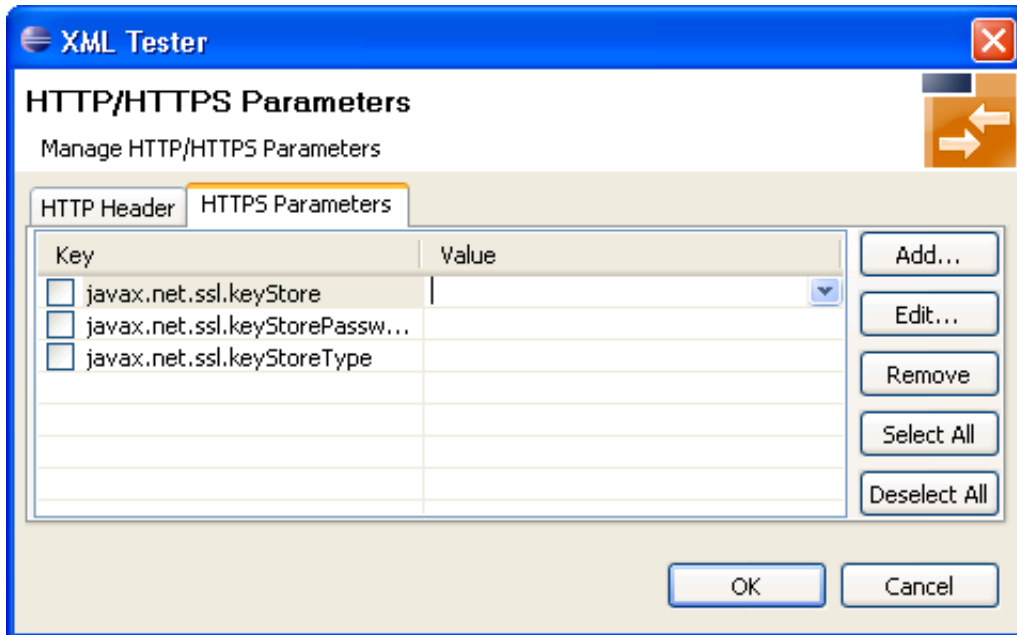


## XML Tester HTTP/HTTPS Parameters Dialog

With the **HTTP Header** tab you can add more information for the call and set the SOAPAction. An entry must be selected to be active. The **Value** box holds the last five used values for the corresponding property. It is editable, which means you can change a value by clicking directly in the table.



With the **HTTPS Parameters** tab you can set parameters required for an HTTPS connection. An entry must be selected to be active. The **Value** box holds the last five used values for the corresponding property. It is editable, which means you can change a value by clicking directly in the table.

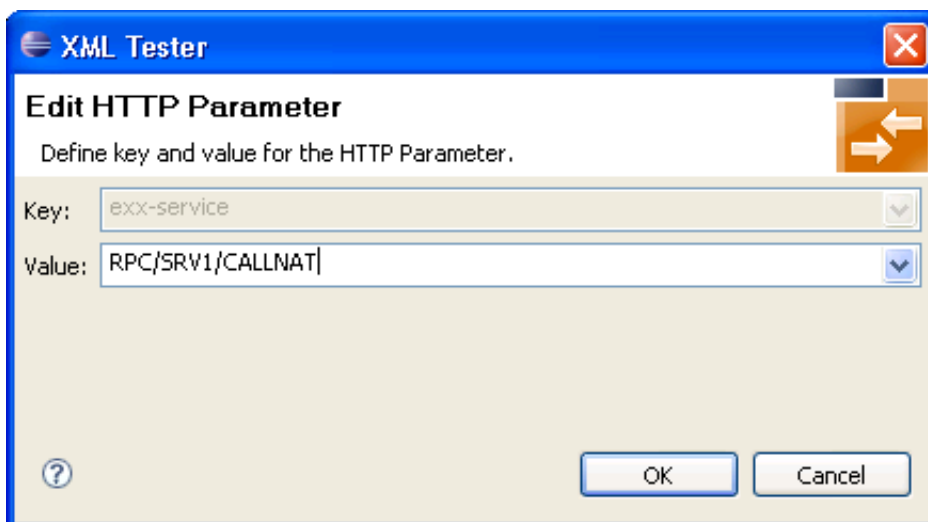


### Add New HTTP Parameter Dialog

With the **Add new HTTP(S) Parameter** dialog you can add a new HTTP or HTTPS parameter. All Software AG's predefined HTTP parameters are listed in the **Key** box. For HTTPS, the **Key** box contains predefined properties for HTTPS communication.

### Edit HTTP Parameter Dialog

With the **Edit HTTP(S) Parameter** dialog you can change the value of a property. The **Value** box is editable and holds the last five used values. The **Key** value for all predefined properties cannot be modified.



## Using the XML Tester

Using the XML Tester you can send an XML document to the EntireX XML/SOAP Listener.

### > To open the XML Tester

- In perspectives other than EntireX, choose **Window > Show View > XML Tester**, in other perspectives, choose **Window > Show View > Other ... > Software AG > XML Tester**.

Or:

Choose **Window > Open Perspective > Other...** and select EntireX Perspective. The **XML Tester** view is part of this perspective.

Or:

In the XML Mapping Editor, switch to the **Overview** page, choose **Quick Test** or **HTTP Test** in the testing section.

Or:

In the XML Mapping Editor, switch to page **XML Samples**, select one document, choose **XML Tester** in the context menu.

### > To run a test

1. Load the mapping information. In field **XMM or AAR File**, enter the absolute path to the AAR or XMM file that is being tested (you can use the **Browse...** button or a drag-and-drop operation). If you enter an AAR file, all mappings contained in the archive are listed in the combo box next to the **XMM or AAR File** field.

The screenshot shows the XML Tester interface with the following fields and options:

- HTTP Test (XML/SOAP Listener)      HTTP URI:
- Quick Test      XMM or AAR File:  --
- Input XML Document:

The dropdown menu for 'XMM or AAR File' contains the following items:

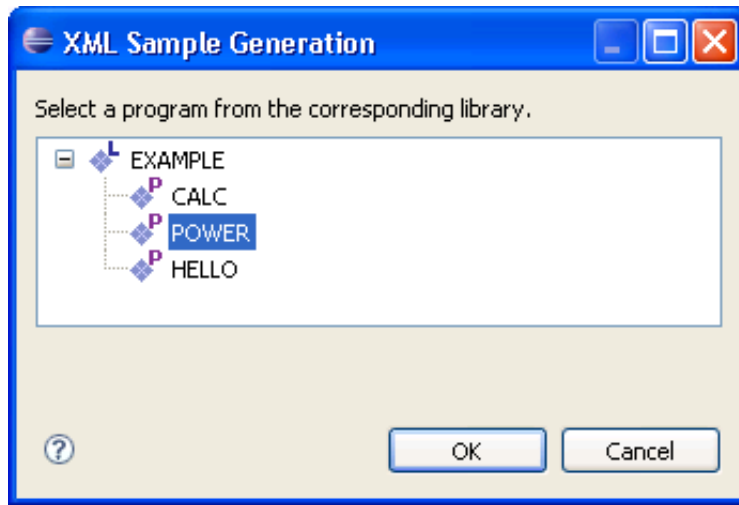
- countries.xmm
- pets.xmm** (selected)
- names.xmm

2. Select the testing interface (Java or HTTP):
  - Java interface: the **XMM or AAR File** field must contain the full path and name of an XMM or AAR archive. Choose the **Quick Test** option to use this interface.
  - HTTP interface: enter the name of the URI of the running EntireX XML/SOAP Listener. Choose the **HTTP Test** option to use this interface.
3. Complete the input area:
  - Type your XML document.
  - Use the **Create Sample XML...** button and follow the dialog.

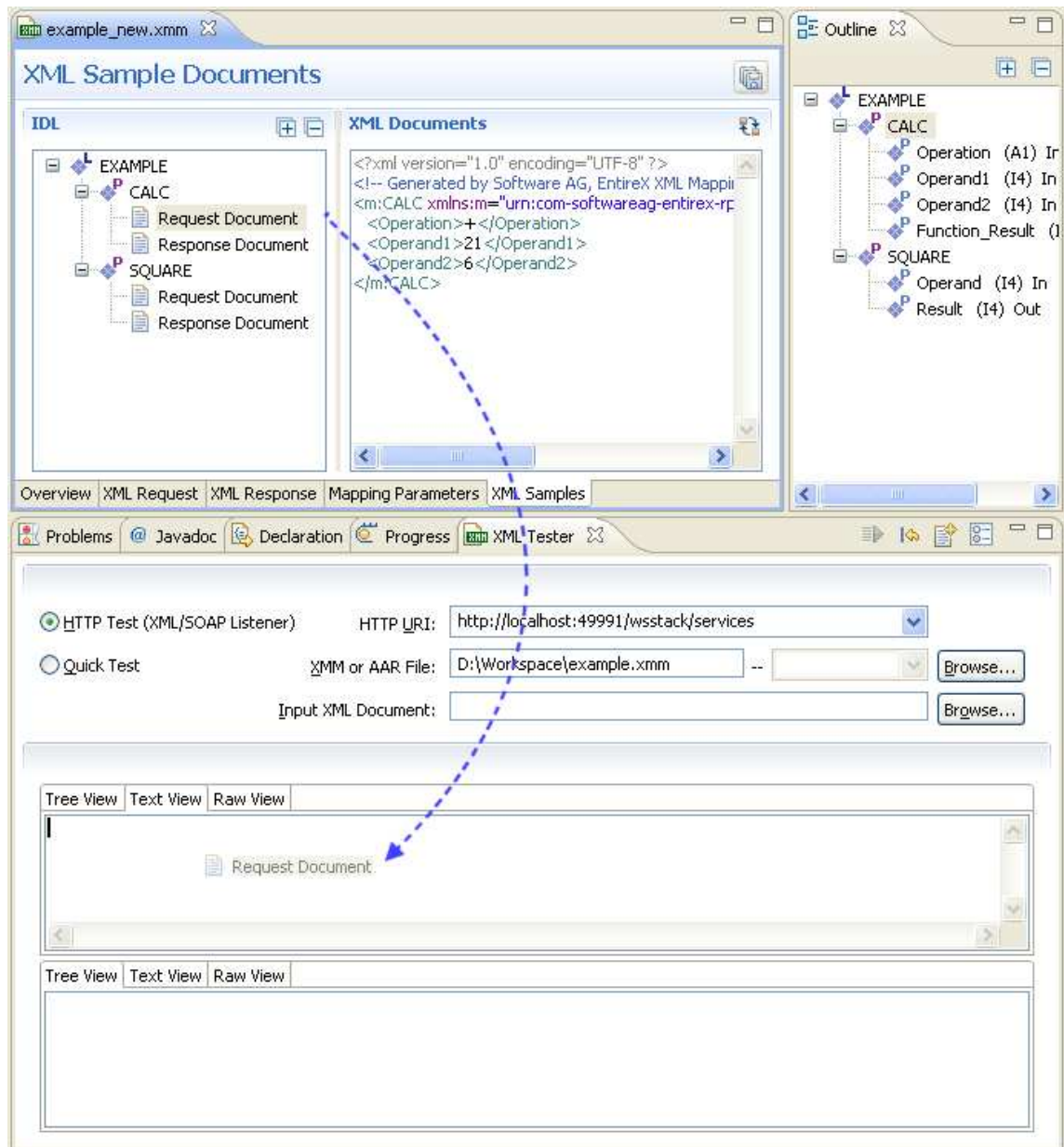
#### Note:

If the IDL file contains only one library with one program, this is used for the sample generation without opening the dialog.

Example dialog:



- Load sample document, using drag-and-drop operation on the sample page of XML Mapping Editor or file browser.



The following tabs are available:

- The **Text View** tab will try to color the request syntactically, making the XML easier to read.
- The **Raw View** tab is initially empty. When the first request is sent, it is filled with the exact message sent together with information on the request method and the used HTTP headers with their values.
- From then on the **Raw View** is displayed and is updated with the last sent request.
- Select an existing XML document (you can use the **Browse** button) and enter it in the field **Input XML file to send**.



4. If the testing interface is Java, the **Settings** action will open the **Quick Test Details** dialog.

The dialog contains the three tabs with the following settings:

- Main
- Broker Security
- Natural Security

See *Quick Test Details Dialog*.

5. If using option **HTTP Test**, the **Settings** action will open the **HTTP/HTTPS Parameters** dialog. The dialog contains two tabs with settings for the HTTP call:

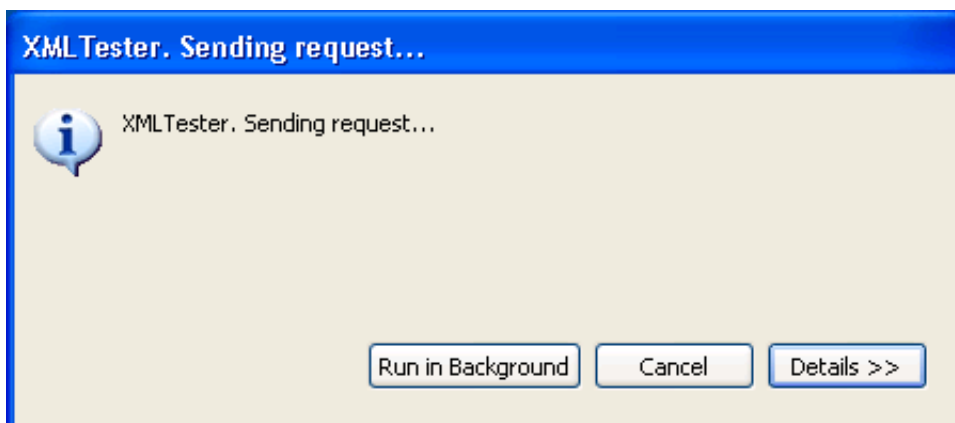
- HTTP Header
- HTTPS Parameters

See *XML Tester HTTP/HTTPS Parameters Dialog*.

6. Send the request by choosing action **Play**. If the testing interface is HTTP, the **Sending request** dialog appears. Here you have several options:

- hide the dialog by pressing **Run in Background** button
- cancel the request. This will terminate the session with the server
- show details about all running Eclipse jobs

A progress bar on the Eclipse status bar shows to indicate that the request is being sent.



If you used the **Quick Test** option, you cannot cancel the request.

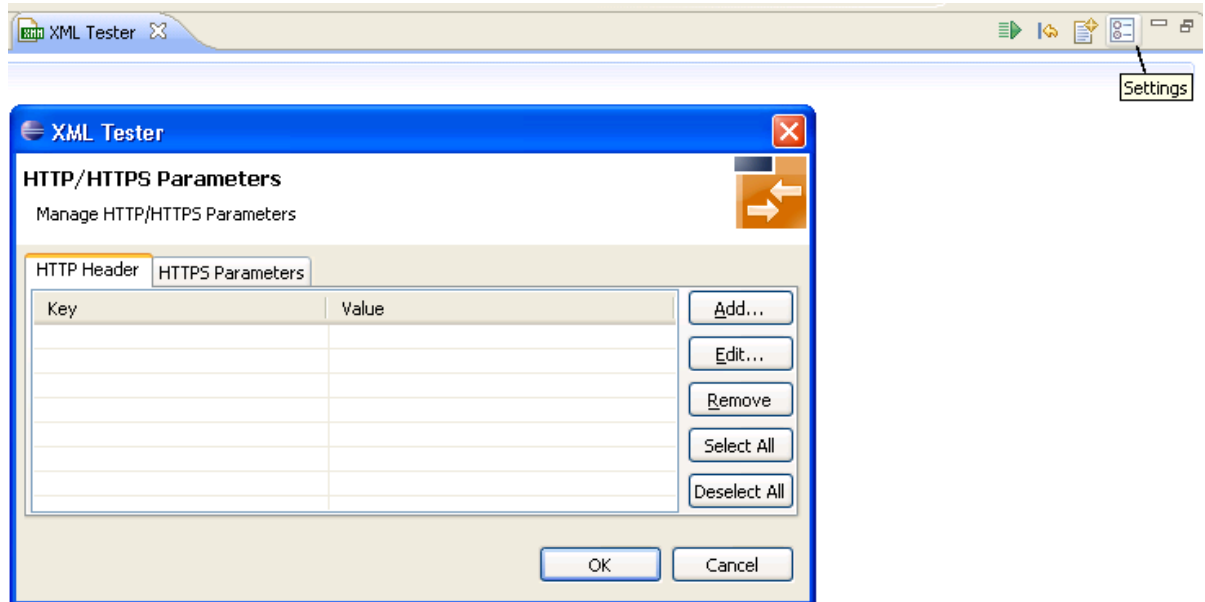
7. When a response is received, it is displayed in the output area. Errors are also displayed in the output area.

The **Text View** tab displays the XML response as formatted and syntactically colored text. The **Raw View** tab displays the response "as is". Information on the used request method, response code and HTTP headers with their values is displayed for the XML response.

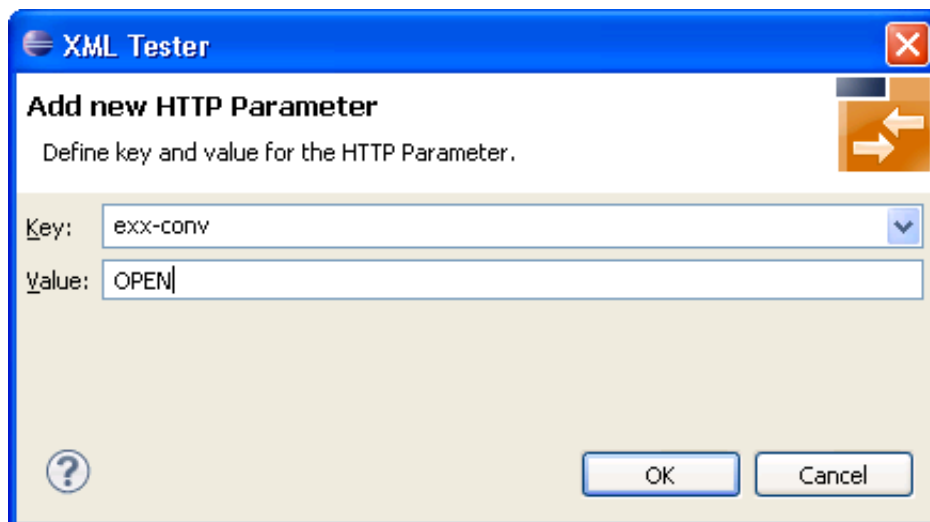
## XML Tester for Conversational RPC

> To use the XML Tester with conversational RPC

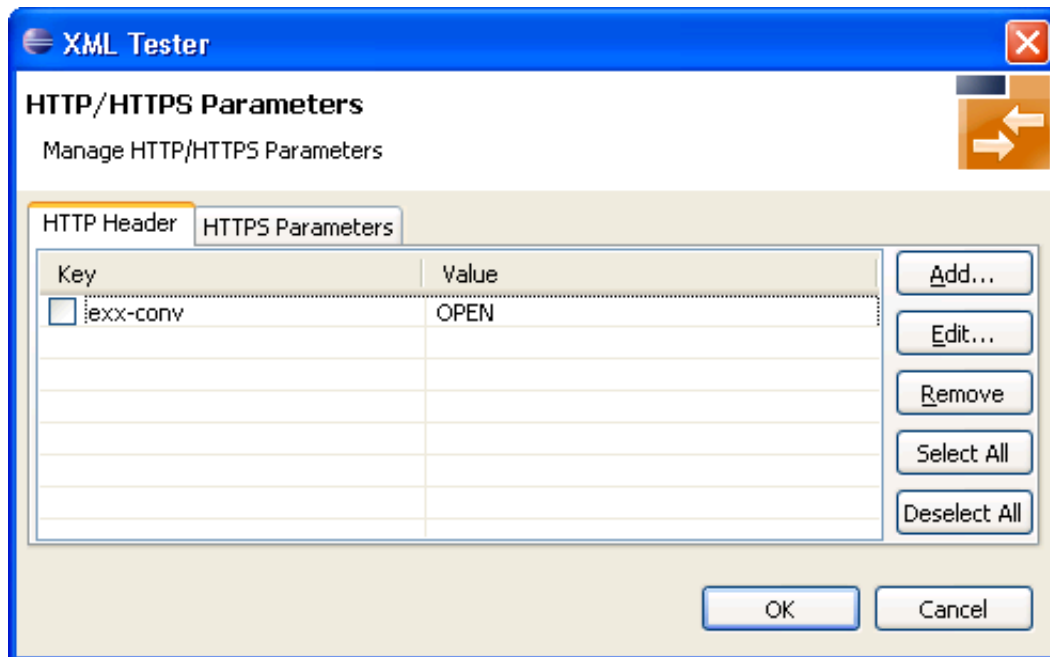
1. Open **Settings**.



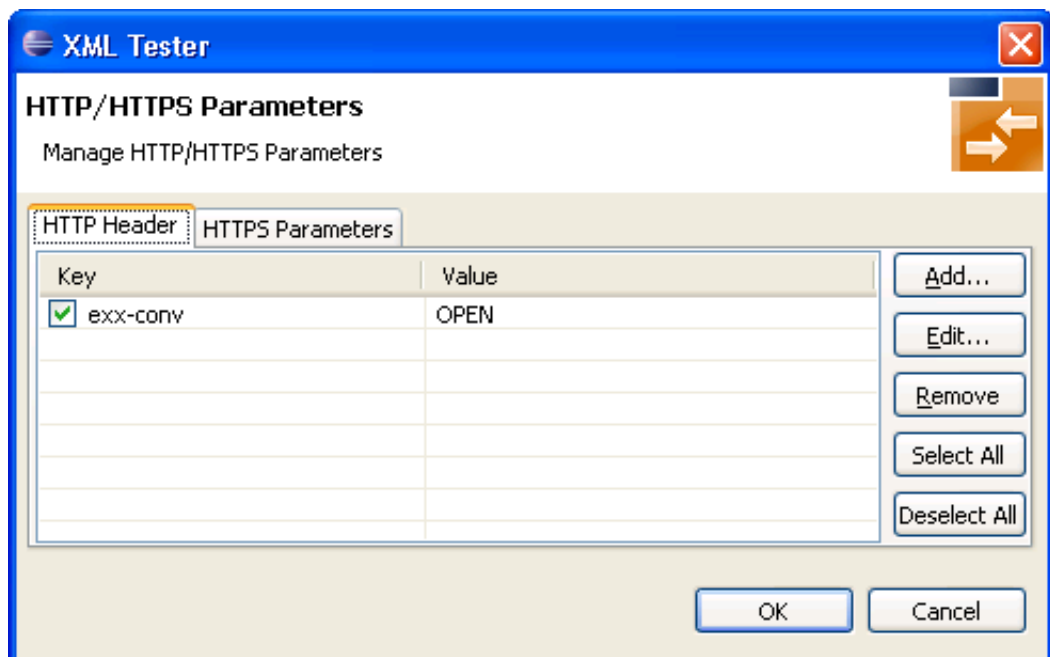
2. Add key `exx-conv` and set value to "OPEN".



3. Press **OK**.



4. Select exx-conv.



5. Press **OK**.
6. Send the request.
7. The response contains the `exx-xml-sessionID` used for conversational communication. This parameter is also added to HTTP/HTTPS parameters for the next call(s) automatically. The parameter `exx-conv` is deactivated simultaneously.
- 8.

```
<!-- snippet with exx-xml-sessionID in response document -->  
  <axis2ns1:EntireX xmlns:axis2ns1="urn:com.softwareag.entirex.xml.rt">  
    <exx-xml-sessionID>XML610C044029044C05</exx-xml-sessionID>  
  </axis2ns1:EntireX>  
<!-- snippet -->
```

9. To finish the conversation, open the settings again, activate the `exx-conv` and set its value to "COMMIT" or "BACKOUT".
10. The conversation is closed with the next sent call.