

Deployment to XML/SOAP RPC Server and Dynamic Configuration of XML/SOAP RPC Server

This chapter covers the following topics:

- Introduction
 - Deploying an XMM File to XML/SOAP RPC Server
 - Undeploying an XMM File to XML/SOAP RPC Server
 - Configuring XML/SOAP RPC Server Dynamically
-

Introduction

The EntireX Workbench supports two methods of modifying the configuration of XML/SOAP RPC Server:

- deploy an XMM to a specified XML/SOAP RPC Server directly
- interact with XML/SOAP RPC Server to perform configuration changes

The changes are activated immediately without restarting the XML/SOAP RPC Server.

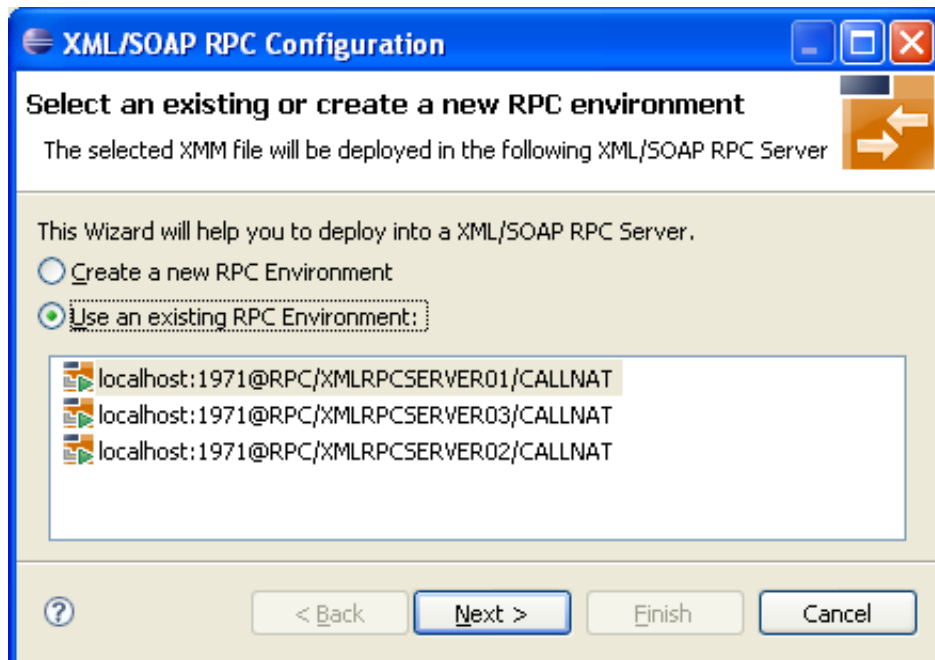
Notes:

1. Setting the property `entirex.server.allowdevelopment` in the XML/SOAP RPC Server's properties file (default name: `entirex.xmlrpcserver.properties`) to "true" (default) *enables* deployment and dynamic configuration; setting this property to "false" *disables* deployment and dynamic configuration.
2. A deploy call with XMM and WSDL may transport a large amount of data. We therefore recommend you increase the value of broker attribute `MAX-MESSAGE-LENGTH` in the attribute file.

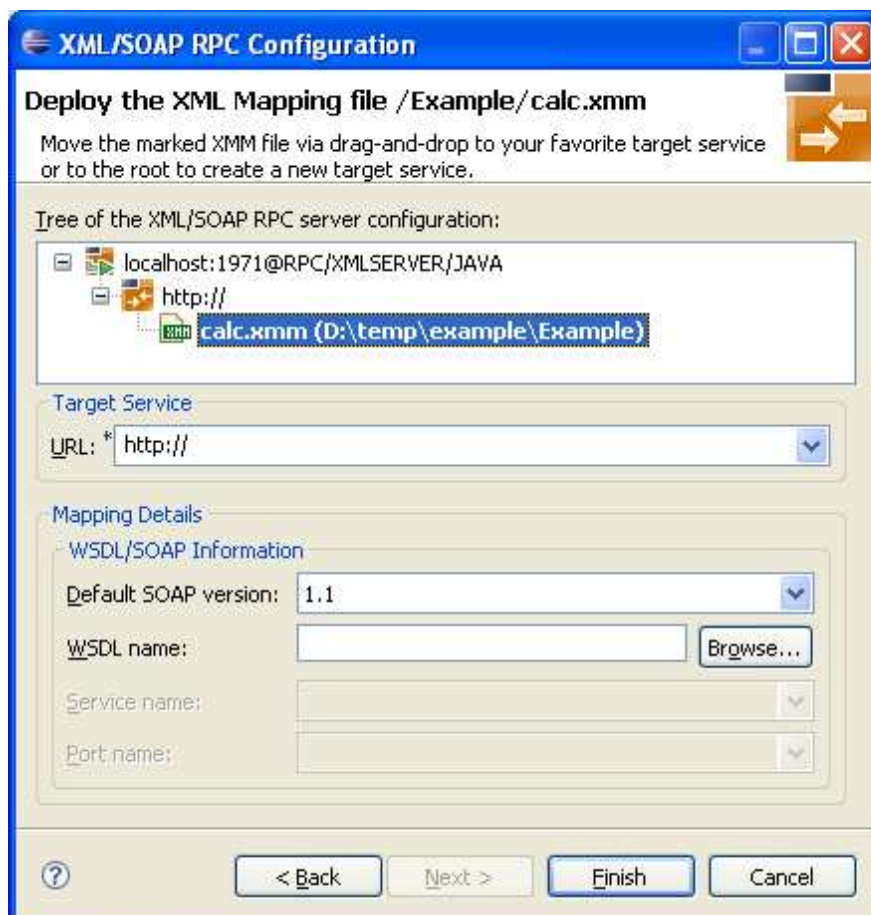
Deploying an XMM File to XML/SOAP RPC Server

➤ To deploy an XMM file to XML/SOAP RPC Server

1. Select an XMM file.
2. From the context menu, choose **Deploy to EntireX XML/SOAP RPC Server ...** to display the following screen:



3. Create a new RPC environment for Broker ID and server address or select an XML/SOAP RPC Server from the list.

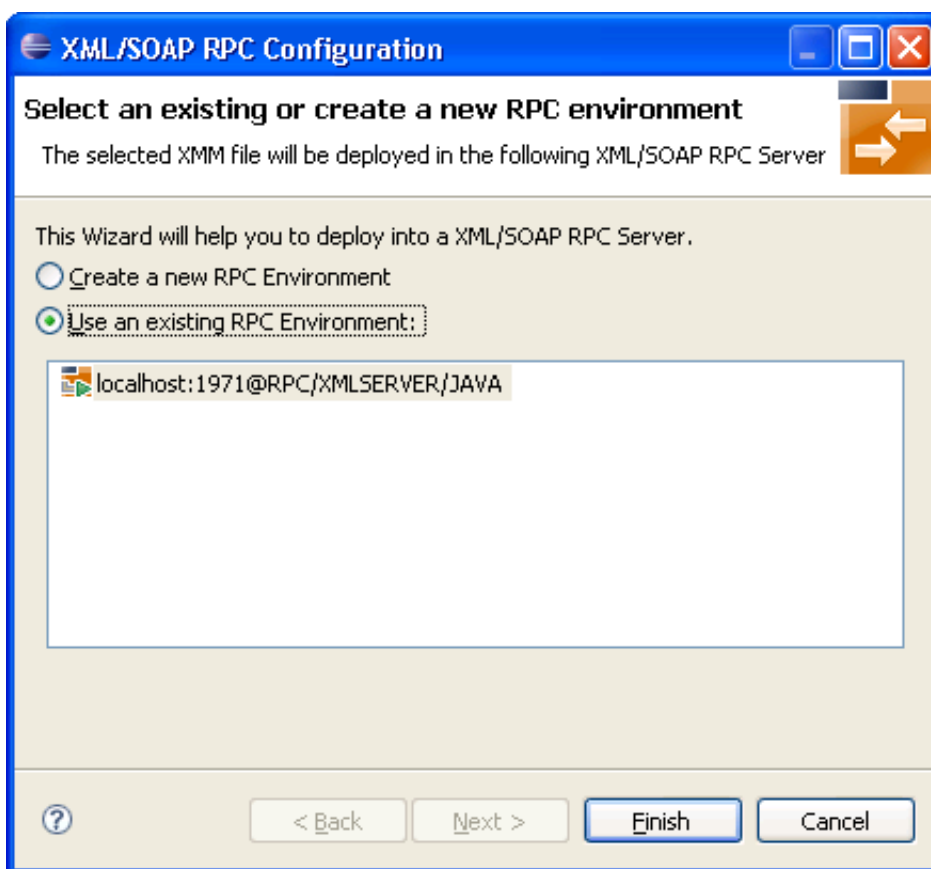


4. Complete the configuration by adding URL and, optionally, the WSDL file. If a WSDL file with same name exists in directory, the field is filled by default. Choose **Finish**.

Undeploying an XMM File to XML/SOAP RPC Server

> To undeploy an XMM file to XML/SOAP RPC Server

1. Select an XMM file.
2. From the context menu, choose **Undeploy from EntireX XML/SOAP RPC Server ...** to display the following screen:

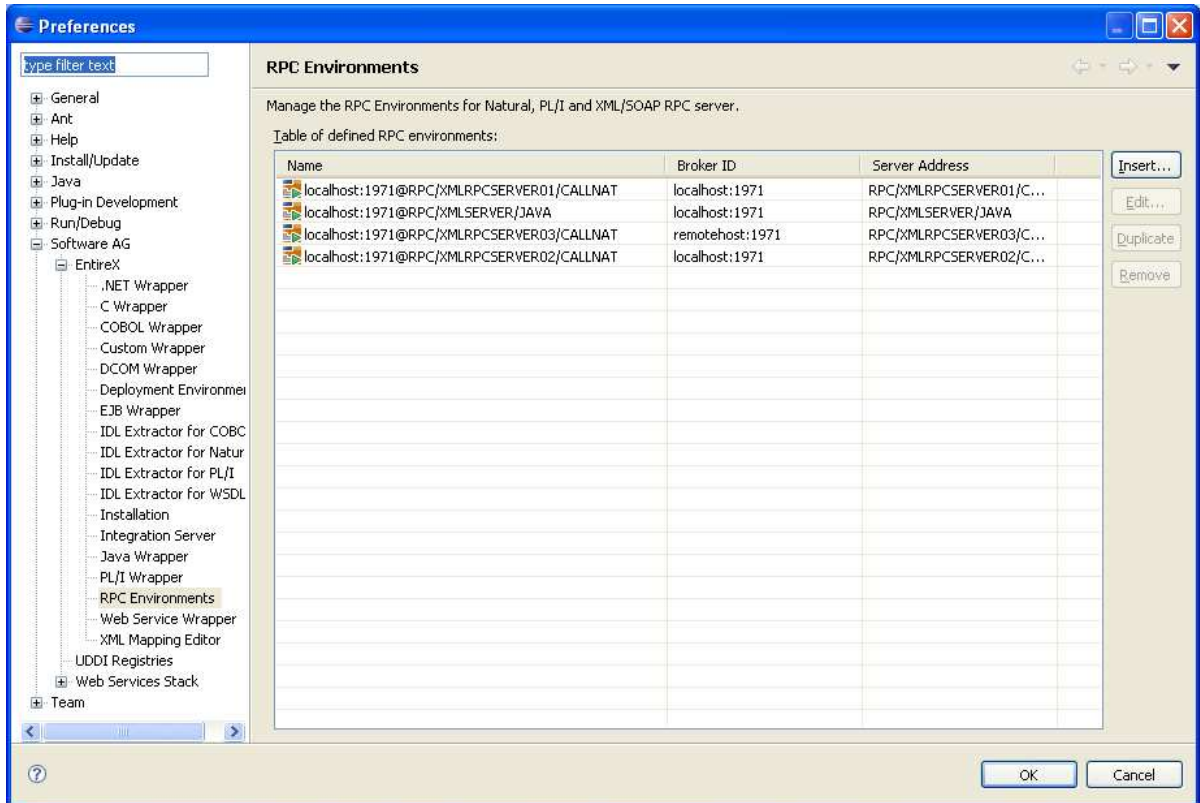


3. Create a new RPC environment for broker ID and server address, or select an RPC server from the list.
4. Choose **Finish**.

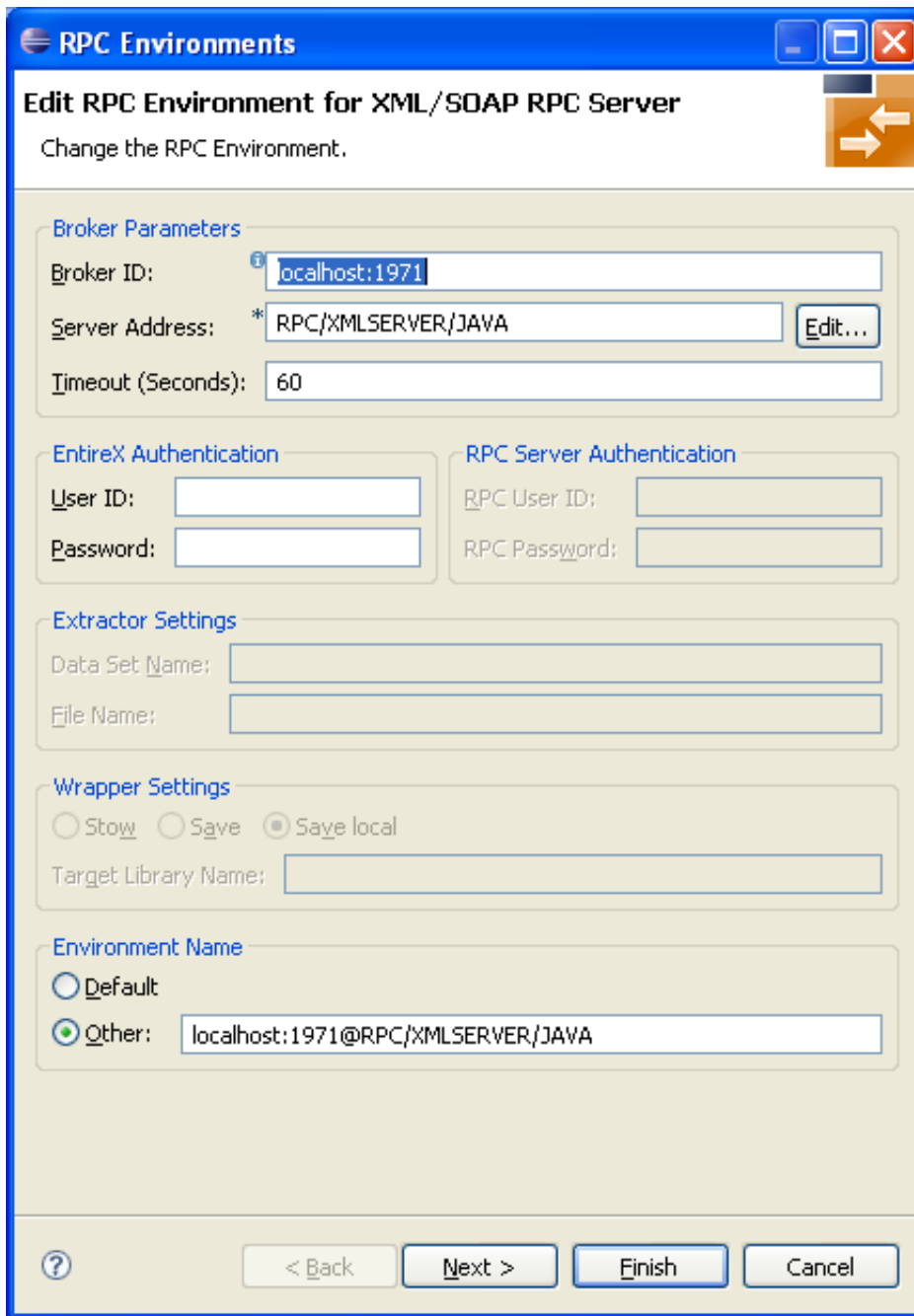
Configuring XML/SOAP RPC Server Dynamically

> To configure an XML/SOAP RPC Server dynamically

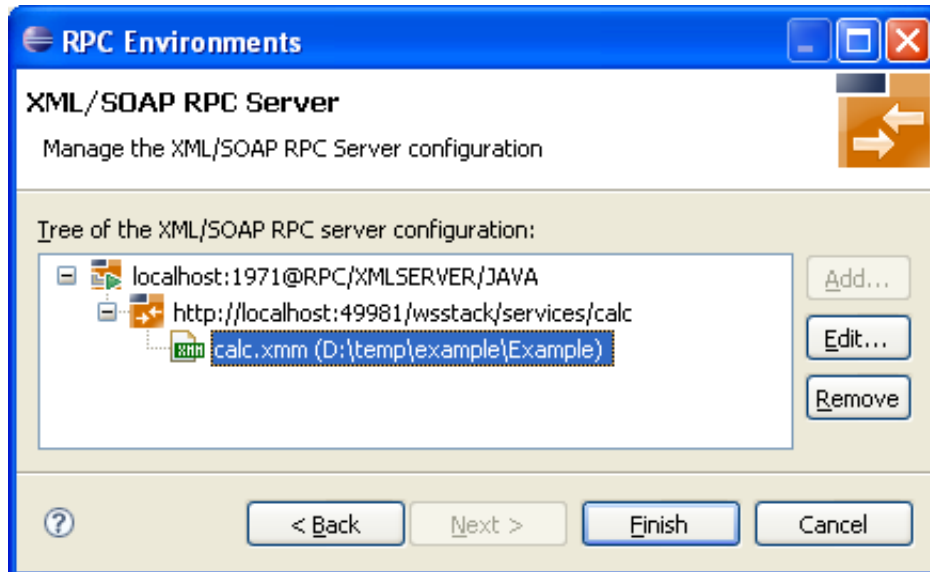
1. From the **Window** menu, choose **Preferences** to display a screen similar to the one below:



2. Select an XML/SOAP RPC Server environment or create a new one.



3. Choose **Next** to view or manage the configuration of Web services.



4. The second wizard page allows you to add, modify and remove service addresses and their configuration as well as add, modify and remove XMM file in the selected configuration. The graphical user interface supports drag-and-drop operations.