

Integration Server Preferences

The Integration Server preferences are used to manage Integration Server connections. This chapter applies both to the Integration Server Wrapper and the IDL Extractor for Integration Server. It covers the following topics:

- Integration Server Connections
 - Setting Integration Server Preferences
-

Integration Server Connections

The Integration Server connections are responsible for the HTTP/HTTPS communication to the Integration Server. They are used in the wizards described in *Using the Integration Server Wrapper* and *Using the IDL Extractor for Integration Server* and are managed in the Integration Server preferences.

An Integration Server connection contains the following information:

- Server name (required, consists of hostname and optional port number, where the default port number is 5555)
- User name
- Password
- optional parameters for SSL (HTTPS):
 - Truststore (name of the file)
 - Verify hostname
 - Optional parameters for client verification:
 - Keystore (name of the file)
 - Password for the Keystore

This information can be specified in the following dialog:

Integration Server Connection

Edit an Integration Server Connection

Server: localhost:6666

User: Administrator

Password: ●●●●●●●●

Use secure connection

Truststore for HTTPS: C:\Program Files\Software AG\EntireX\Etc\ExxJavaAppCert.jks

Verify host name

Client Authentication

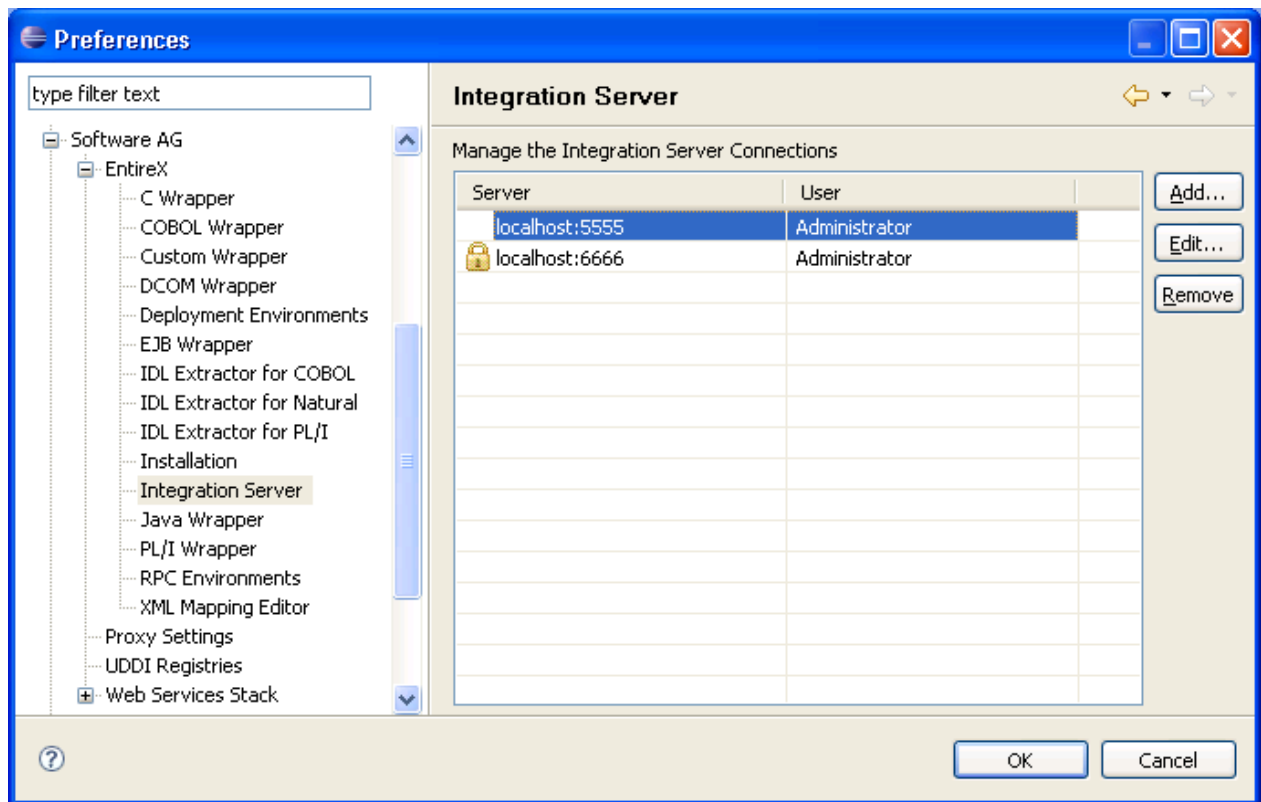
Keystore:

Password:

Notes:

1. The only required field is **Server**. Enter the hostname of the Integration Server including an optional port number. If no port number is specified, port number defaults to "5555". The **Integration Server Authentication** can be passed with the **User** and **Password** fields.
2. Optional settings are for secure connections. The **Truststore for HTTPS** contains all signed certificates and must be a valid truststore.
3. The check box **Verify host name** checks that the hostname is entered in the stored certificate.
4. When the Integration Server has **Client Authentication** enabled, you can specify your **Keystore** file and keystore **Password**.
5. For managing Integration Server connections, see *Integration Server Preferences*.

Setting Integration Server Preferences



> To add, edit or remove Integration Server connections

- Open the Preferences page and choose **Add...**, **Edit...** or **Remove**.

All changes in the table will be stored permanently after leaving the preferences with **OK**.

Caution:

The creation of duplicates is forbidden. A duplicate will be detected if server (including port number, for instance the default "5555"), user and truststore file have the same name.