

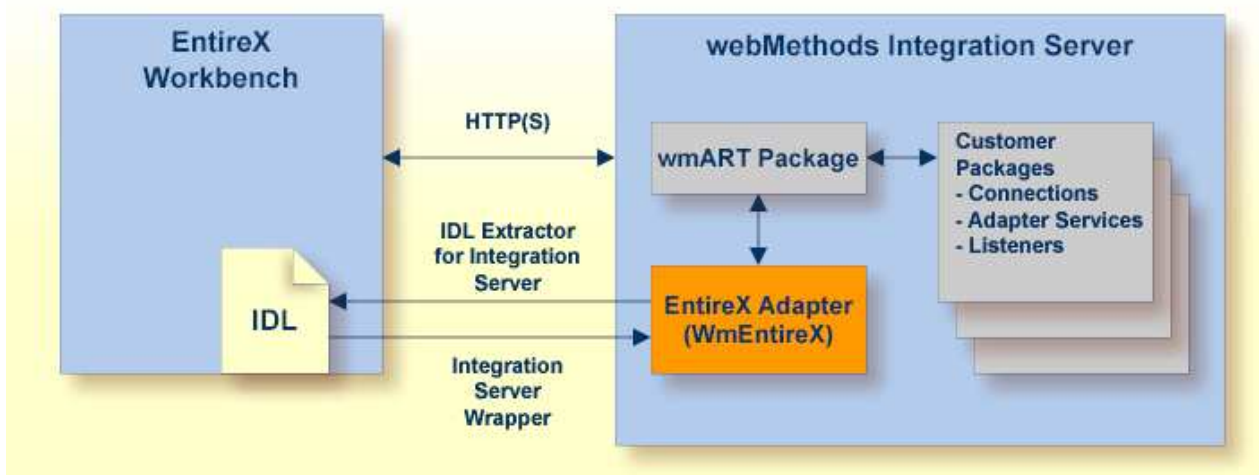
Introduction to the Integration Server Wrapper

This chapter covers the following topics:

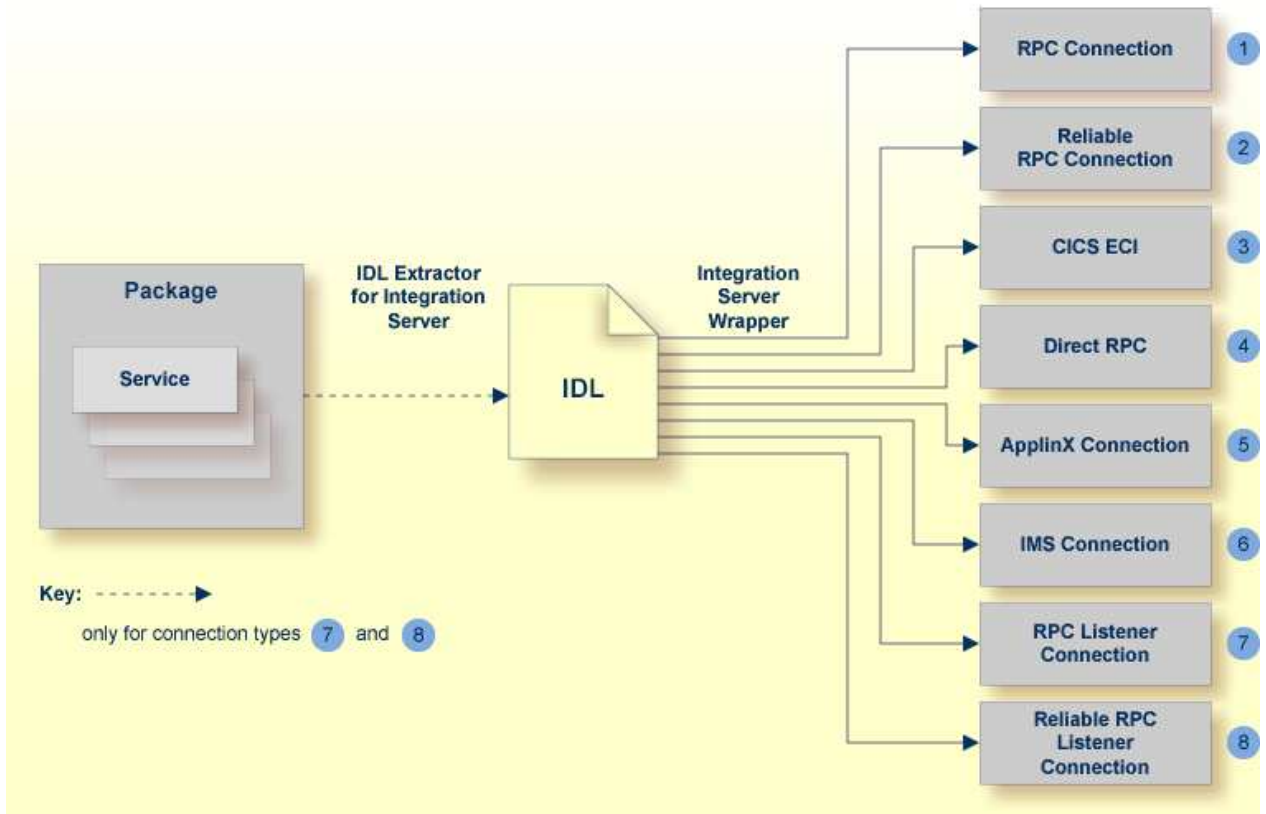
- Scope
 - Prerequisites
-

Scope

The Integration Server Wrapper provides access to EntireX RPC-based components, ApplinX, IMS Connect, or CICS ECI from Integration Server services. A wizard generates Integration Server objects from a Software AG IDL file.

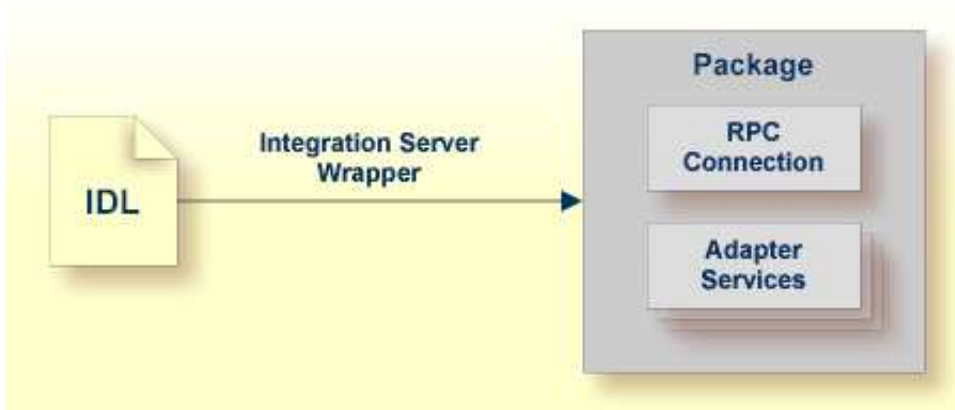


The Integration Server Wrapper enables users to generate both client and server objects in the Integration Server. A client consists of a connection of type "RPC", "Reliable RPC", "CICS ECI", "Direct RPC", "ApplinX" or "IMS Connect". A server consists of a connection of type "RPC Listener" or "Reliable RPC Listener".



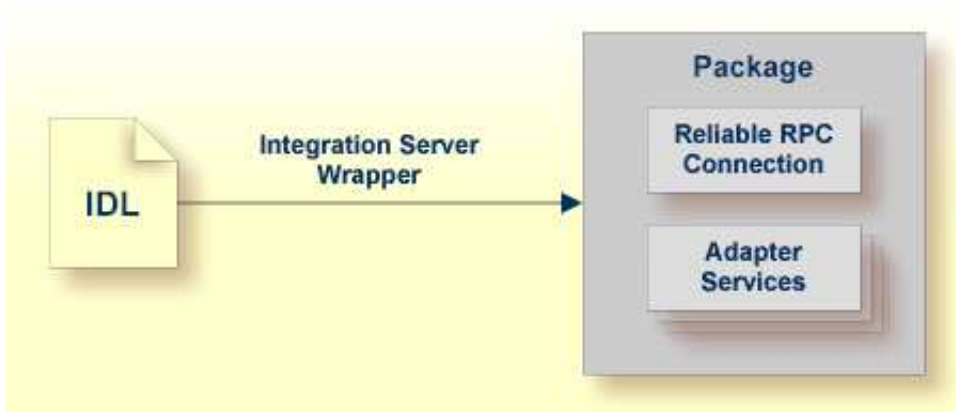
It is possible to create the following objects:

- **RPC Connection**



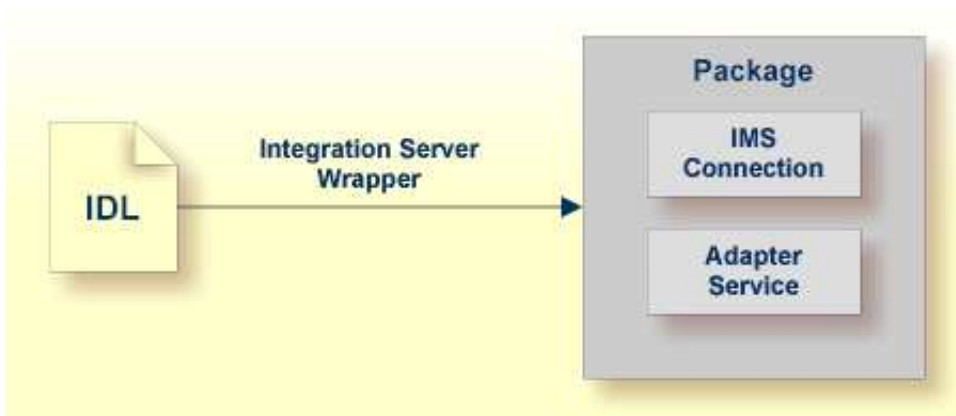
See Step 4a: Define Adapter Services for an RPC Connection.

- **Reliable RPC Connection**



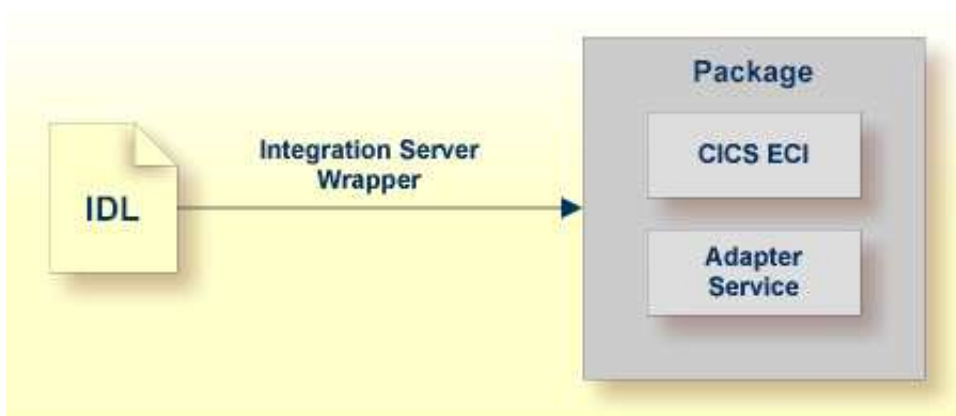
See Step 4a: Define Adapter Services for an RPC Connection.

- **Connection to IMS Connect**



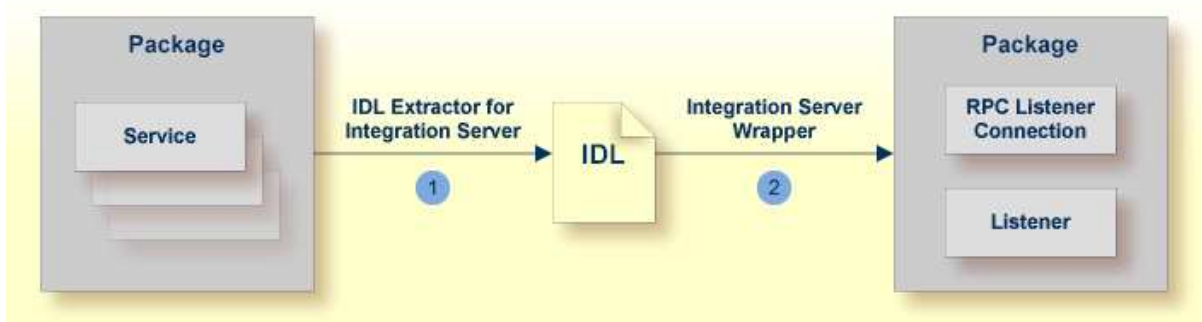
See Step 4a: Define Adapter Services for an RPC Connection.

- **CICS ECI Connection**



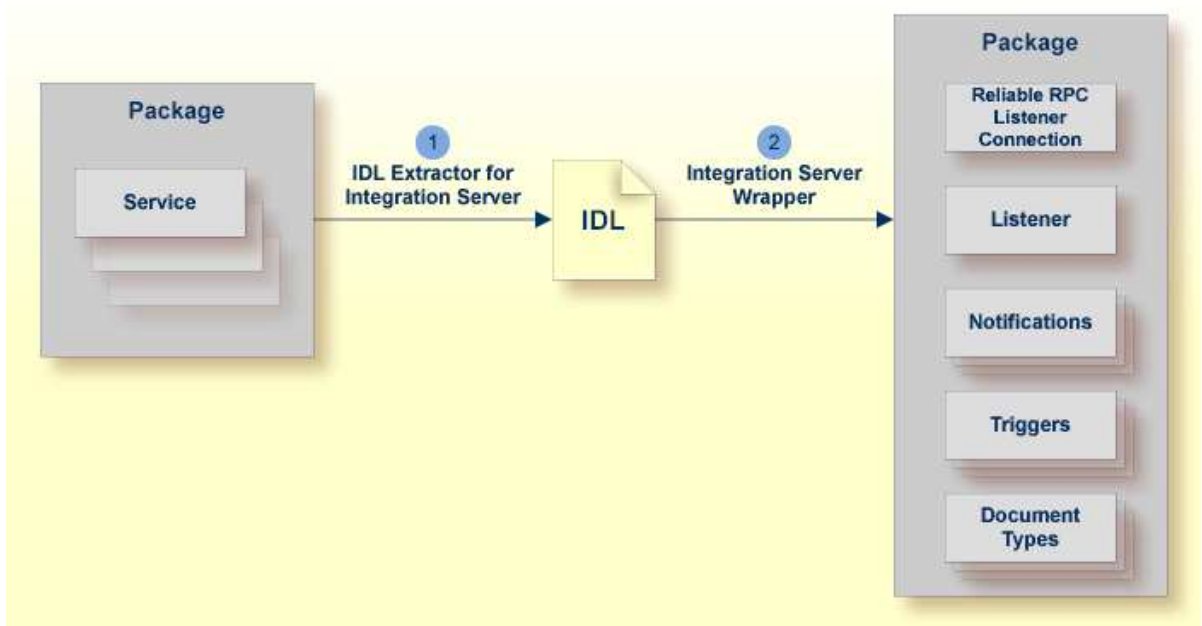
See Step 4a: Define Adapter Services for an RPC Connection.

- **RPC Listener**



1. See *Using the IDL Extractor for Integration Server*.
2. See *Step 4b: Define Adapter Services for an RPC Listener or a Reliable RPC Listener*.

● **Reliable RPC Listener**



1. See *Using the IDL Extractor for Integration Server*.
2. See *Step 4b: Define Adapter Services for an RPC Listener or a Reliable RPC Listener*.

Prerequisites

Four components are required for integration:

- the EntireX Adapter installed inside the Integration Server
- the EntireX Broker (not for Direct RPC connections, connections to IMS Connect, or CICS ECI Connections, or ApplinX)

- the EntireX RPC Server (not for Connections to IMS Connect or CICS ECI Connections, or ApplinX)
- the EntireX Workbench for design time (not for ApplinX connections)

Note:

The EntireX Workbench is used at design time. All other components are used also at runtime.

For ApplinX connections we have the following prerequisites:

- the EntireX Adapter installed inside the Integration Server
- the ApplinX server
- the ApplinX Workbench (inside Software AG Designer)