

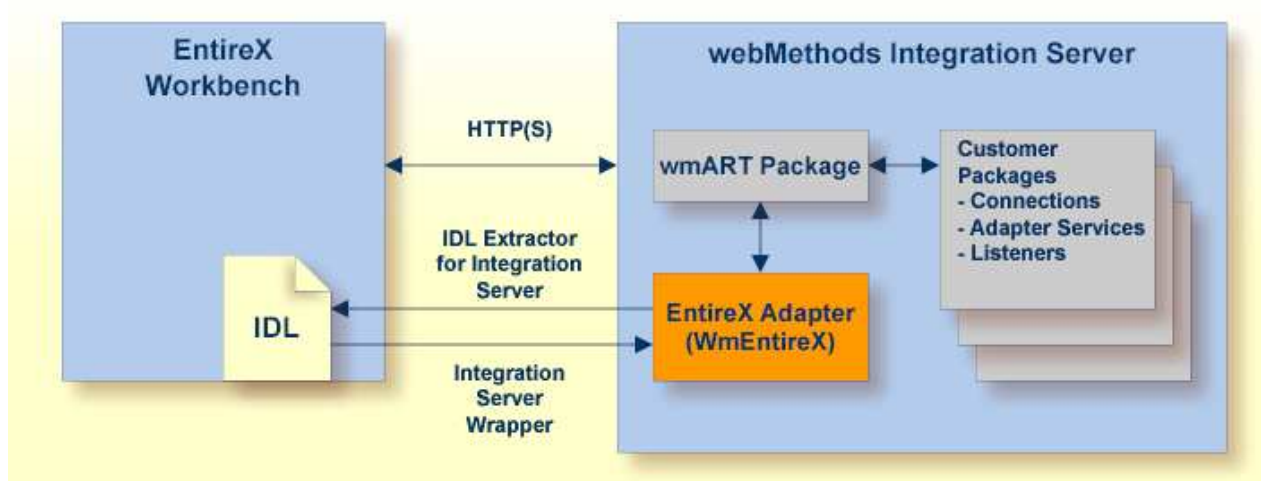
Introduction to the IDL Extractor for Integration Server

This chapter covers the following topics:

- Scope
 - Calling an Integration Server Flow from a Mainframe Program
-

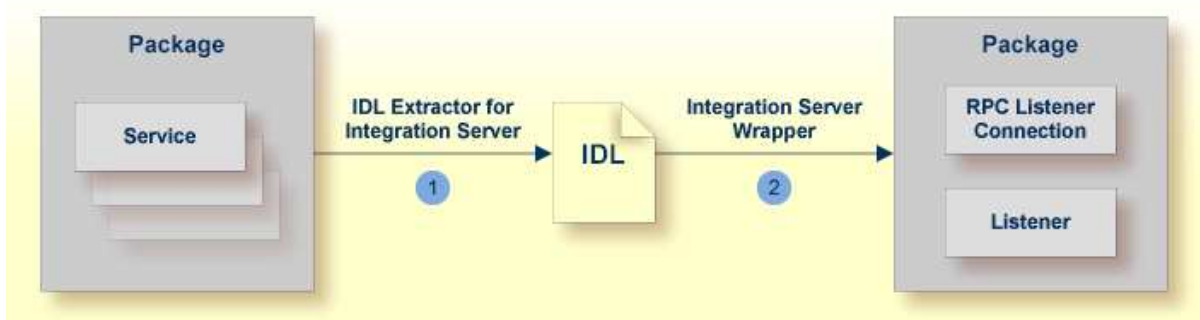
Scope

The Software AG IDL Extractor for webMethods Integration Server is a wizard that reads a package from the Integration Server and generates a Software AG IDL file from all the existing services and nodes. Each service results in a program in the IDL file. All parameters of the services are mapped to an IDL alphanumeric data type, available as variable (AV) or fixed (AN) length. From EntireX Adapter 9.7, mapping is described in this product's documentation.



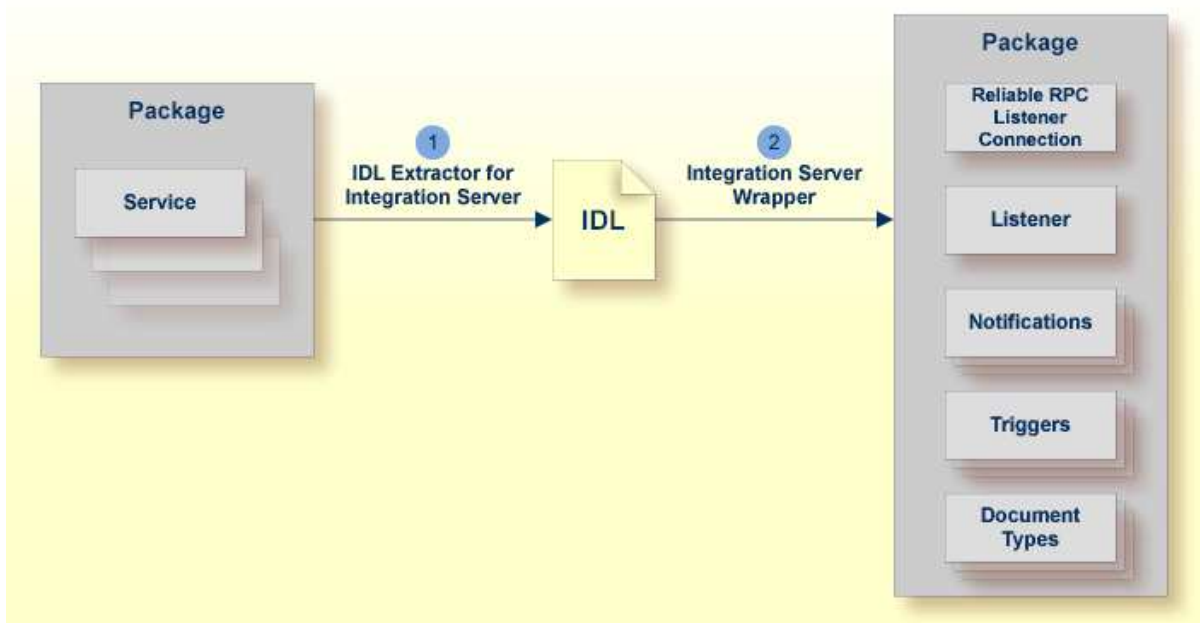
With the Integration Server Wrapper you can generate a server of type "RPC Listener" or "Reliable RPC Listener". See *Using the Integration Server Wrapper*.

- **RPC Listener**



1. See *Using the IDL Extractor for Integration Server*.
2. See *Step 4b: Define Adapter Services for an RPC Listener or a Reliable RPC Listener*.

- **Reliable RPC Listener**



1. See *Using the IDL Extractor for Integration Server*.
2. See *Step 4b: Define Adapter Services for an RPC Listener or a Reliable RPC Listener*.

Calling an Integration Server Flow from a Mainframe Program

➤ To call an Integration Server flow from a mainframe program

- Use the plug-in to generate the connection and see *Using the Integration Server Wrapper* with the steps 1 to 3, 4b and 5.