

# Displaying Technical Information with System Management Hub for EntireX

The System Management Hub Technical Information Agent provides information for EntireX.

This chapter covers the following topics:

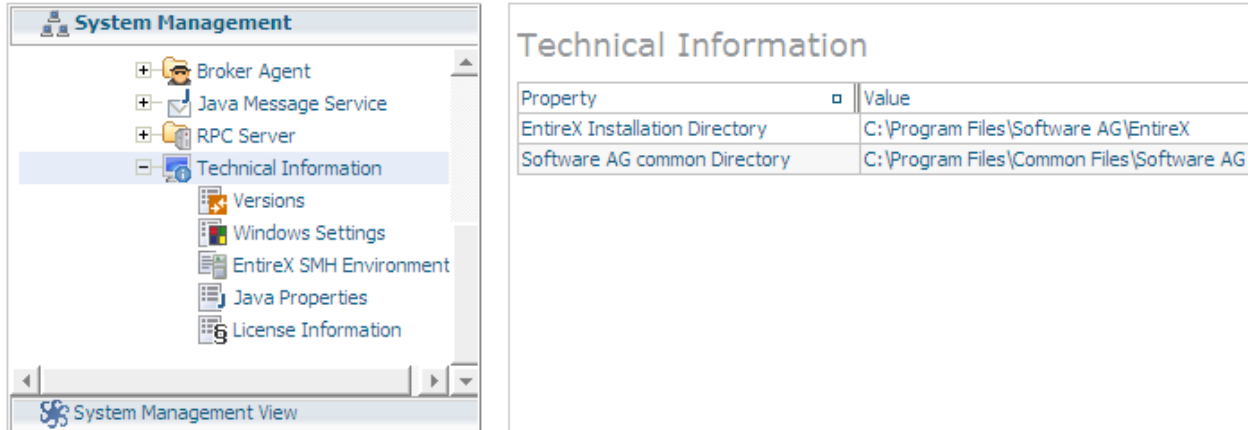
- Technical Information
- Versions
- Windows Settings
- Environment Variables
- Java Properties
- License Information
- Batch Interface

---

## Technical Information

The root node of the Technical Information Agent displays the EntireX installation directories.

**System Management**

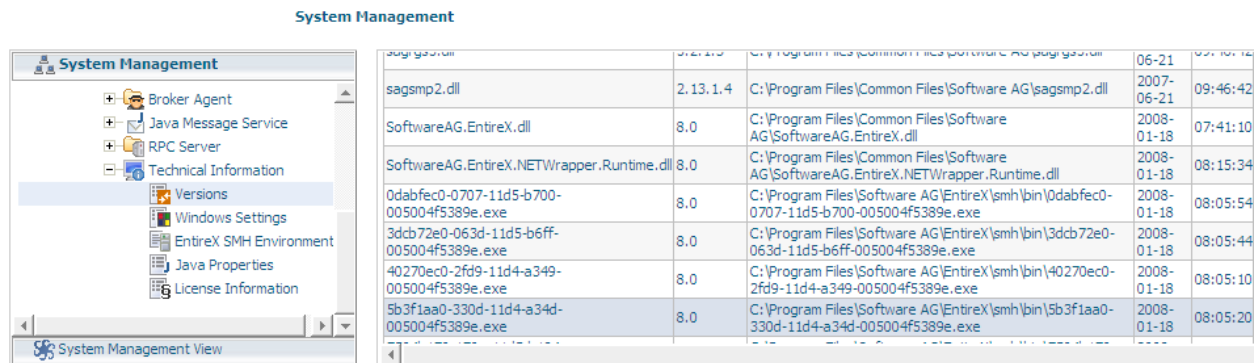


The screenshot shows the System Management Hub interface. On the left, a tree view under 'System Management' has 'Technical Information' selected. The right pane, titled 'Technical Information', displays a table with two rows of properties and values.

Property	Value
EntireX Installation Directory	C:\Program Files\Software AG\EntireX
Software AG common Directory	C:\Program Files\Common Files\Software AG

## Versions

The Versions node provides information on the internal versions of the EntireX modules (executables, shared libraries and .jar files) which are installed in the EntireX bin directory and in the Software AG common directory.

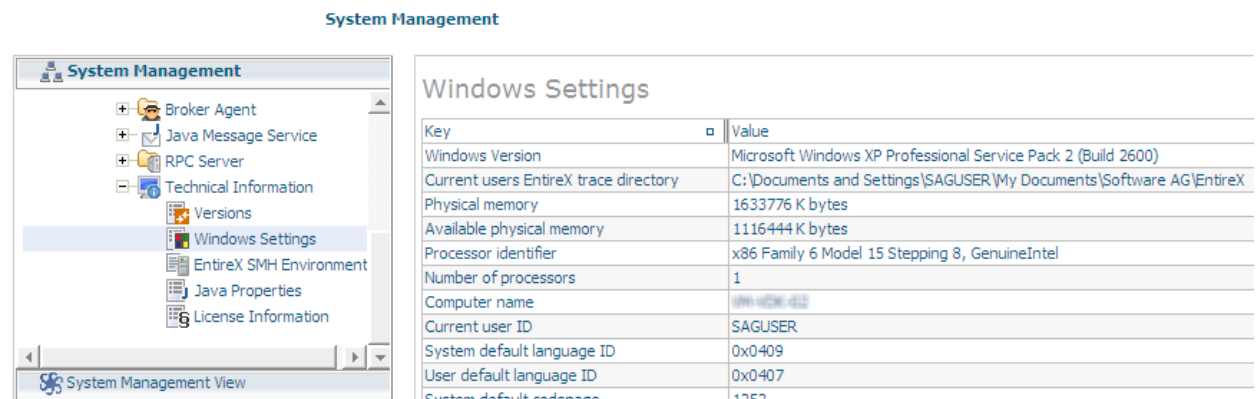


With this tool, all EntireX files will be scanned for version information. It may therefore take a moment before the information is displayed.

## Windows Settings

The Windows Settings node displays some important information on the common Windows system settings. It will also display some important hardware properties.

This node is not visible on a UNIX installation.



## Environment Variables

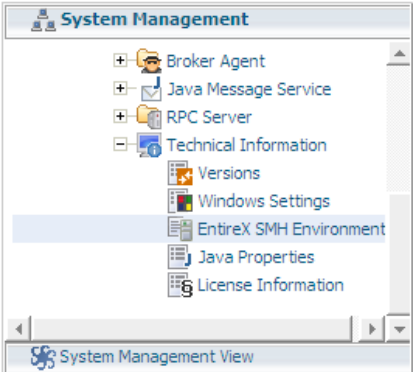
The Environment Variables node displays the official environment variables that are documented in the EntireX documentation and are used in part by the EntireX modules.

The environment variables displayed are the ones that are defined as system variables and the environment variables of the user SAGUSER. The user variables of the current user will not be visible.

The environment variables depend on the operating system.

See also *Environment Variables in EntireX*.

**System Management**

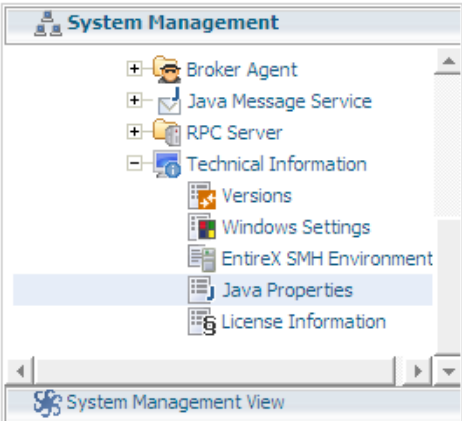


Key	Value
SAG_COMMON	-
PATH	C:\Program Files\Software AG\JDK\jv1.5.0\jre\bin\client;C:\Program Files\Software AG\EntireX\bin;C:\WINDOWS\system32;C:\WINDOWS;C:\WINDOWS\System32\Wbem;Files\Common Files\Software AG
CLASSPATH	-
ETB_STUBLOG	-
ETB_TRANSPORT	-
ETB_TIMEOUT	-
ERX_TRACELEVEL	-
ERX_TRACEFILE	-
ERX_ETBAPIVERS	-

## Java Properties

The Java Properties node displays all available Java system properties. The displayed Java properties may depend on the Java version.

**System Management**



Key	Value
java.runtime.name	Java(TM) 2 Runtime Environment, Standard Edition
entirex.config	C:\Program Files\Software AG\EntireX\etc\entirex.config
sun.boot.library.path	C:\Program Files\Software AG\JDK\jv1.5.0\jre\bin
java.vm.version	1.5.0_08-b03
java.vm.vendor	Sun Microsystems Inc.
java.vendor.url	http://java.sun.com/
path.separator	;
java.vm.name	Java HotSpot(TM) Client VM
file.encoding.pkg	sun.io
user.country	DE
sun.boot.class.path	Service Pack 2

## License Information

The License Information node shows the content of the installed EntireX license file.



## Batch Interface

The Technical Information Agent supports the System Management Hub’s batch interface. The table below contains the corresponding batch commands.

Node Name	Batch Command
Technical Information	show technicalinformation
Versions	show versioninformation
Windows Settings	show windowssettinginformation
Environment Information	show exxenvinformation
Java Properties	show javainformation
License Information	show licenseinformation

Example:

Enter the `argbatch` command with the following parameters to execute the batch command to retrieve the Technical Information node properties.

```
argbatch show versioninformation user=[userid] password=[passwd] target=[managed host name] "product=webMethods EntireX 9.7"
```

**Note:**

`argbatch` is part of the System Management Hub software. It is located in the *bin* directory of the System Management Hub installation.

See also *Batch Interface* in the separate System Management Hub documentation.