

Using the DCOM Wrapper

This chapter covers the following topics:

- Starting the DCOM Wrapper
- Setting DCOM Wrapper Preferences
- Setting DCOM Wrapper Properties
- Generating a DCOM Client
- Generating a DCOM Proxy

See also *Prerequisites for Using DCOM Wrapper Objects*.

Starting the DCOM Wrapper

To use the DCOM Wrapper functions, open the *EntireX Workbench*.

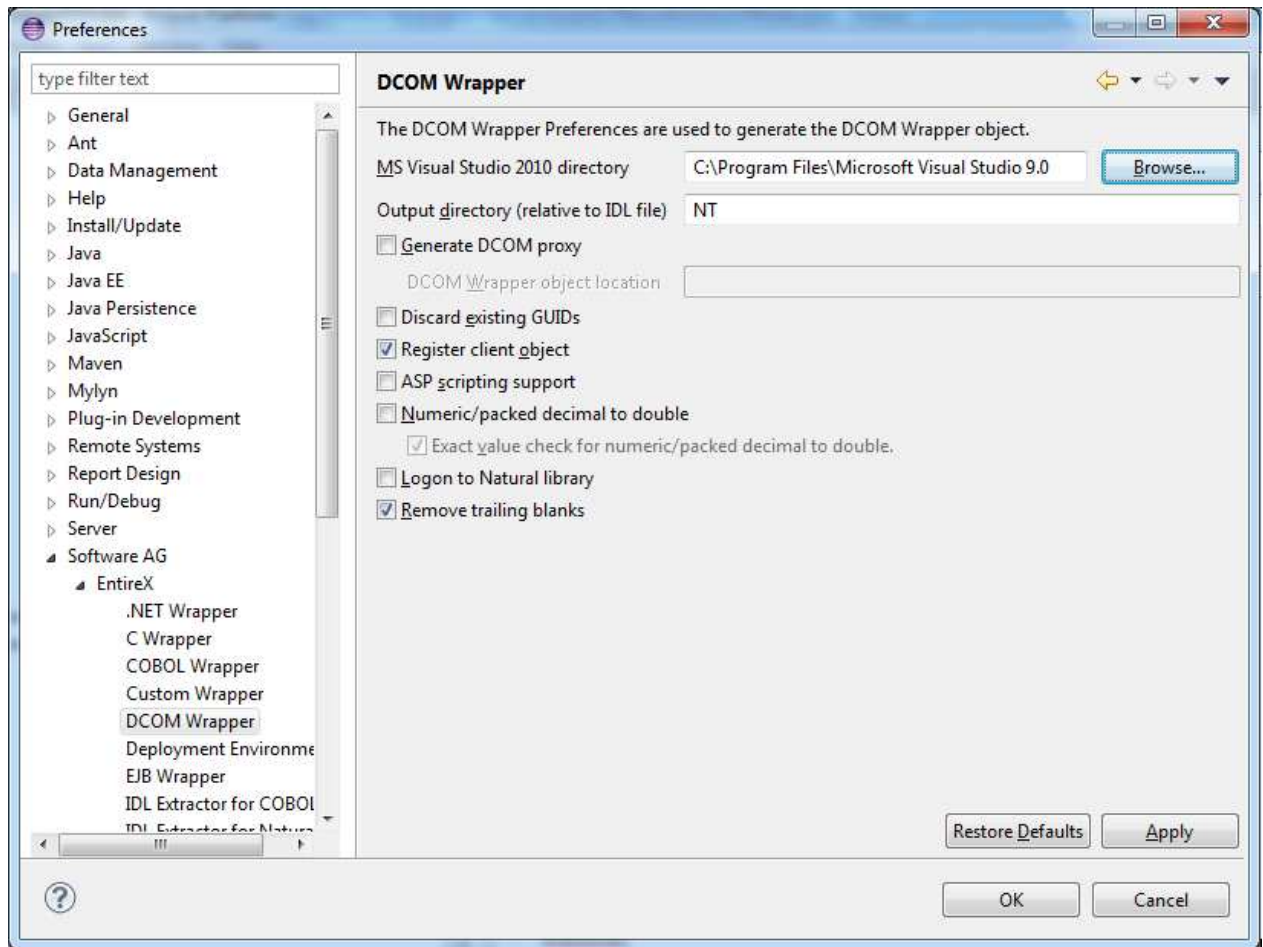
See also *Microsoft Visual Studio Wizard for EntireX DCOM Wrapper*.

Setting DCOM Wrapper Preferences

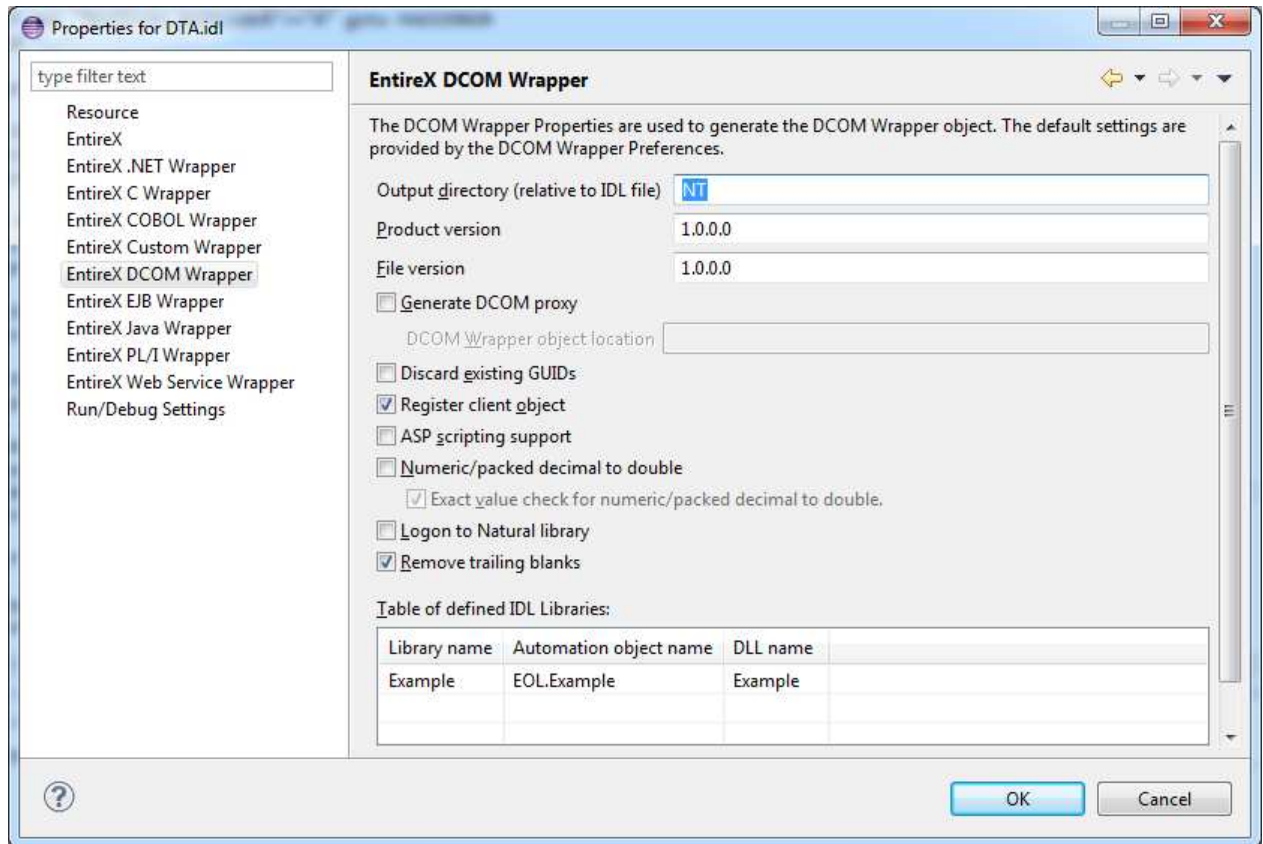
➤ To set the DCOM Wrapper Preferences

1. Open the DCOM Wrapper Preferences (using: **Window > Preferences > Software AG > EntireX > DCOM Wrapper**).
2. Ensure that the compiler path is set correctly.

For an explanation of other settings, see *Setting DCOM Wrapper Properties*.



Setting DCOM Wrapper Properties



➤ **To set the DCOM Wrapper Properties**

1. In the tree display, select the IDL file to be processed.
2. Use the context menu or choose **File > Properties** to call the Properties window.

Property	Description
Output directory	<p>Specify the output directory, relative to the selected IDL file. The directory will be created if it does not exist. NT is the default to be compatible with previous versions.</p> <p>The location of the generated batch and other files depends on the name of the output directory.</p> <p>NT Default. Batch files are generated in the same directory as the IDL file; other files are generated to subdirectory <i>NT</i>. This was the behavior in the initial version of EntireX 9.0 or earlier.</p> <p>other Batch and other files are generated in a user-defined subdirectory.</p>
Product version	<p>Specify the product version. Use the following format:</p> <p><i>n.n.n.n</i></p>

Property	Description
File version	Specify the file version. Use the following format: <i>n.n.n.n</i>
Numeric/Packed decimal to double	Select this box to map Natural data types Numeric and Packed Decimal (not supported by C or Visual Basic) to data type <i>double</i> , which is supported by C and Visual Basic. If you do not select the check box, the data type is mapped as a string (BSTR). Note: Conversion of data types may lead to loss of precision. Natural supports a precision of 29 digits, while the data type double supports a precision of 15 digits. See table of <i>Supported Data Types</i> .
Logon to Natural Library	For Natural RPC Servers only. Check this box to advise the Natural RPC Server to logon to the Natural library for RPC requests. For a conversation, the logon to the Natural library is performed when the conversation is opened; during a conversation the Natural library cannot be changed. This is available from Natural version 2.3 and above.
Generate DCOM proxy	Check the Generate DCOM Proxy box to enable the use of DCOM.
DCOM Wrapper object location	Specify where the generated DCOM Wrapper object (for example <i>example.dll</i>) is to be located (IP-address or location name). This field is evaluated only if proxy objects (for example <i>pexample.dll</i>) are in use, otherwise it is ignored.
Discard existing GUIDs	Check this box if you have to re-generate a project: <ul style="list-style-type: none"> ● if you want to discard all existing GUIDs ● if you change the number of groups/structures.
Register client object	Check this box to register the client object and the wrapper after generating the object.
ASP Scripting Support	Create extended interface for ASP scripting support.
Features	See also <i>Setting Features</i> .
Automation Object Name	Specify the name of the registered object. The default is <i>EOL.<Library></i> . See <i>Using Alias Names with the DCOM Wrapper</i> .
Library Name	Specify the library of the registered object.
DLL Name	Specify the name of generated DLL file.

Generating a DCOM Client

> To generate a DCOM Client

1. Select the Software AG IDL file.
2. From the context menu, choose **Other > Generate DCOM**.

Generating a DCOM Proxy

> To generate a DCOM Proxy

1. In the *Properties*, check the box **Generate DCOM proxy**.
2. Select the Software AG IDL file.
3. From the context menu, choose **Other > Generate DCOM**.