

Deployment Service

This chapter covers the following topics:

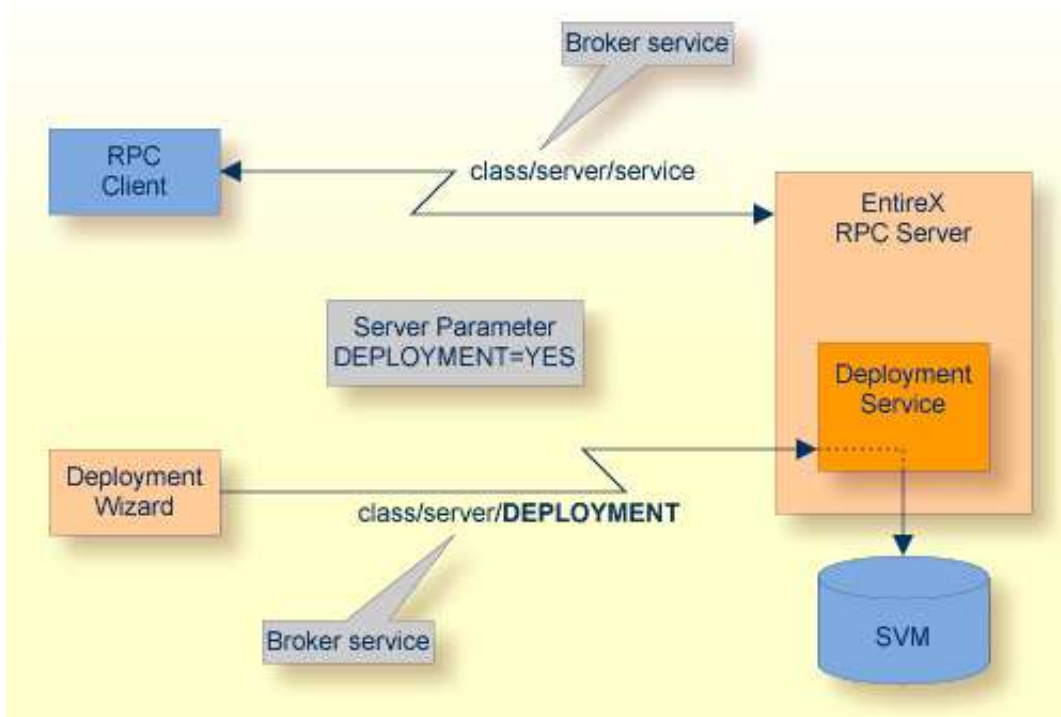
- Introduction
 - Scope
 - Enabling the Deployment Service
 - Disabling the Deployment Service
-

Introduction

The deployment service is the (server-side) counterpart to the deployment wizard; see *Server Mapping Deployment Wizard*. It is a built-in service of the EntireX RPC server, which can be enabled/disabled by EntireX RPC server configuration settings.

Usage can be restricted to certain users or group of users, using EntireX Security; see *Authorization of Client and Server*.

You need to configure the deployment service only when server-side mapping files are used. There are also client-side server mapping files that do not need configuration here; see *Server Mapping Files for COBOL* in the EntireX Workbench documentation.



Scope

The deployment service is used in conjunction with the

- IDL Extractor for COBOL to deploy server-side mapping files with the deployment wizard;
- COBOL Wrapper for RPC server generation to deploy server-side mapping files with the deployment wizard.

See also *Deploying Server-side Mapping Files to the RPC Server*.

The deployment service uses the same class and server names as defined for the EntireX RPC server, and DEPLOYMENT as the service name, resulting in `class/server/DEPLOYMENT` as the broker service. Please note DEPLOYMENT is a service name reserved by Software AG. See broker attribute SERVICE.

Enabling the Deployment Service

➤ To enable the deployment service

1. For a Batch RPC Server, the server-side mapping container (VSAM file) must be installed and configured. See *Step 1: Define a Server-side Mapping Container - VSAMDEF.J (Optional)* under *Installing the z/VSE EntireX RPC Servers*.
2. Set the RPC server parameter `deployment=yes`. See `deployment` under *Configuring the RPC Server*.
3. Define in the broker attribute file, under the RPC service, an additional broker service with DEPLOYMENT as the service name and values for class and server identical to those used for the RPC service. For example, if your RPC service is named

```
CLASS = RPC      SERVER = SRV1      SERVICE = CALLNAT
```

the deployment service requires the following additional service definition in the broker attribute file:

```
CLASS = RPC      SERVER = SRV1      SERVICE = DEPLOYMENT
```

4. Optional. If you need to restrict the use of the deployment service to a selected group of users, use EntireX Security and define security rules for the `class/server/DEPLOYMENT` broker service. The service name DEPLOYMENT is a constant.
 - For a z/OS broker, see *Resource Profiles in EntireX Security*.
 - For a UNIX or Windows broker, see *Administering Authorization Rules using System Management Hub* under UNIX | Windows.
 - Not applicable to a BS2000/OSD or z/VSE broker.

Disabling the Deployment Service

➤ To disable the deployment service

- Set the Batch RPC Server parameter `deployment=no`. See `deployment` under *Configuring the RPC Server*.

The Batch RPC Server will not register the deployment service in the broker.