

Configuring a Single Broker with SMH

- Starting a Local Broker
 - Restarting a Local Broker
 - Stopping a Local Broker
 - Administering a Broker Attribute File
 - Administering a Log File
 - Setting the Local Broker Autostart Value
 - Enabling the SNMP Plug-in
 - Disabling the SNMP Plug-in
-

Starting a Local Broker

➤ To start a local broker

1. Select the **EntireX Broker** node below the EntireX node in **System Management**.
2. Select the broker name to be started.
3. From the context menu, choose **Start Broker**.

Note:

Before you start a local Broker, make sure that the Broker's `etbsrv` service or daemon is running and try again. See *Broker Instance Created Automatically during Installation* and *Startup Daemon 'etbsrv'*.

A broker process is started in its working directory. The started broker establishes a connection to the local Administration Service and provides information such as the used and activated ports. The information is updated every 60 seconds. If an attribute file is modified after a broker has been started, this does not result in incorrect information. If a broker is started manually by a local user and the attribute file is not in the working directory under the EntireX directory `config/etb`, the broker can be administered only to a limited extent. It is only possible to stop this broker. Each local broker is displayed by the Administration Service in SMH. The brokers that were started manually have the status "Running: unmanaged Broker with restricted access" in SMH. If the broker is to be administered without restrictions, the working directory and attribute file must be located under the EntireX directory `config/etb`.

Restarting a Local Broker

➤ To restart a local broker

1. Select the **EntireX Broker** node below the EntireX node in **System Management**.
2. Select the broker name to be administered.
3. From the context menu, choose **Restart Broker**.

Stopping a Local Broker

> To stop a local broker

1. Select the **EntireX Broker** node below the EntireX node in **System Management**.
2. Select the broker name to be administered.
3. From the context menu, choose **Stop Broker**.
4. Choose **OK**.

Administering a Broker Attribute File

This section covers the following topics:

- Editing an Attribute File
- Uploading an Attribute File
- Downloading an Attribute File

Editing an Attribute File

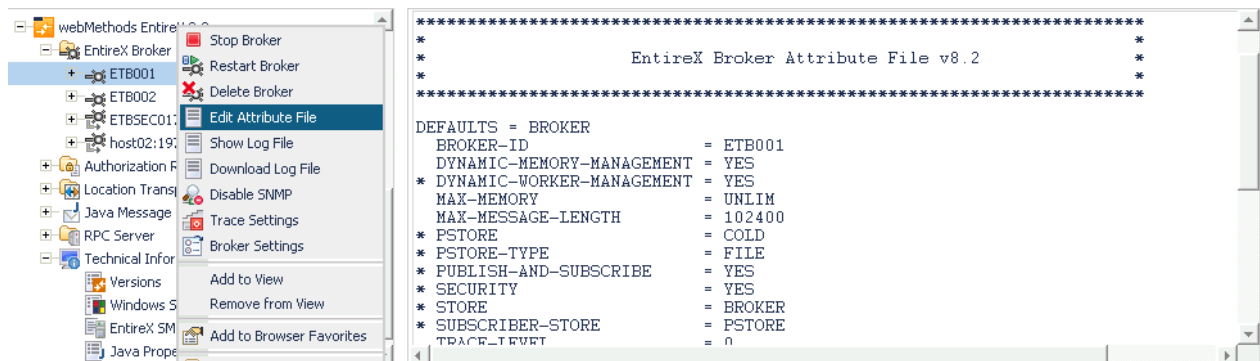
> To edit a broker attribute file

1. Select the **EntireX Broker** node below the EntireX node in **System Management**.
2. Select the broker name to be administered.
3. From the context menu, choose **Edit Attribute File**.

Note:

There is another vertical scrollbar for the editor itself. Scroll the horizontal scrollbar to the right in order to see it. In addition, you can use Ctrl Home and Ctrl End to get the first and the last pages, respectively.

4. Edit your changes.
5. Choose **Save**.
6. Choose **Restart** for the changes to take effect.



Uploading an Attribute File

➤ To upload a broker attribute file

1. Select the **EntireX Broker** node below the EntireX node in **System Management**.
2. Select the broker name to be administered.
3. From the context menu, choose **Edit Attribute File**.
4. Choose **Upload**.
5. Choose **Browse** and select the local attribute file.



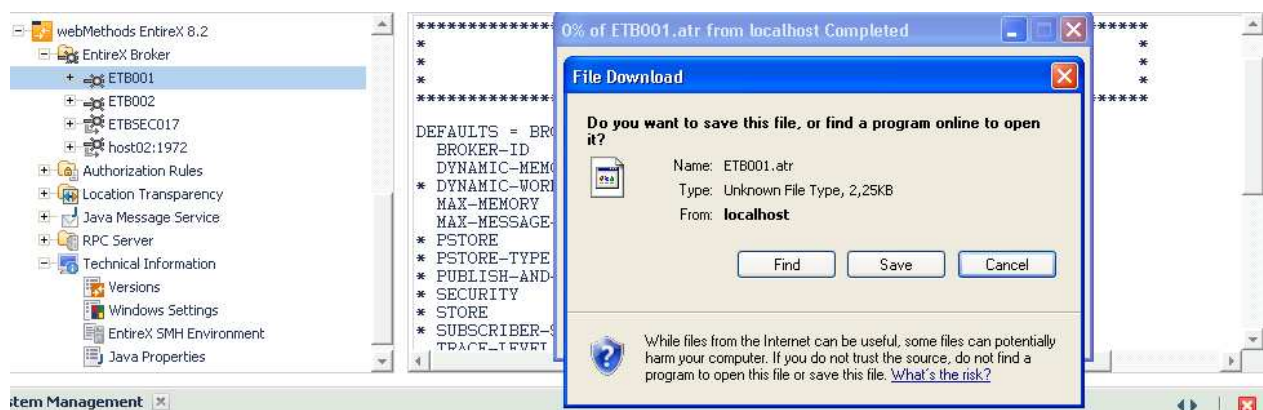
As a result, the upload starts automatically followed by a message "Upload completed!".

Downloading an Attribute File

➤ To download a broker attribute file

1. Select the **EntireX Broker** node below the EntireX node in **System Management**.
2. Select the broker name to be administered.
3. From the context menu, choose **Edit Attribute File**.
4. Choose **Download**.

In the ensuing dialog box, choose **Save**.



Administering a Log File

This section covers the following topics:

- Showing a Log File
- Downloading a Log File

Showing a Log File

➤ To show a broker log file

1. Select the **EntireX Broker** node below the EntireX node in **System Management**.
2. Select the broker name to be administered.
3. From the context menu, choose **Show Log File**.

Note:

There is another vertical scrollbar for the editor itself. Scroll the horizontal scrollbar to the right in order to see it. In addition, you can use Ctrl Home and Ctrl End to get the first and the last pages, respectively.

4. Choose **Close**.

Showing a Log File

Configuring a Single Broker with SMH

The screenshot shows a management console interface. On the left, a tree view displays a hierarchy of brokers under 'webMethods EntireX Broker'. A context menu is open for the 'ETB001' broker, with 'Show Log File' selected. The main area displays a configuration table for a single broker with SMH.

HEAP-SIZE	1
LONG-BUFFER-DEFAULT	n
MAX-EXTENSION-DATA-LENGTH	0
MAX-MEMORY	U
MAX-MESSAGE-LENGTH	1
MAX-MESSAGES-IN-UOW	1
MESSAGE-CASE	N
NUM-CLIENT	0
NUM-COMBUF	0
NUM-CONVERSATION	0
NUM-SERVER	0
NUM-SERVICE	0
NUM-SERVICE-EXTENSION	0
NUM-UOW	0
NUM_WORKER	1

Navigation buttons: < Back, Next >, Close

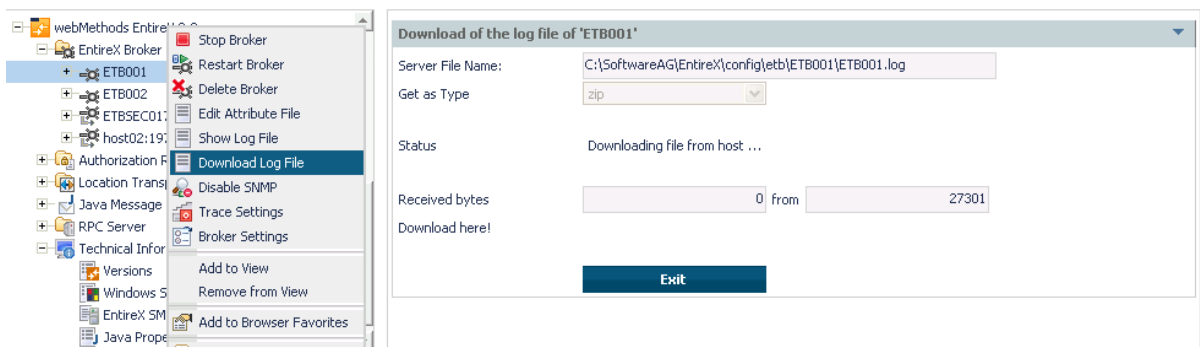
Downloading a Log File

> To download a broker log file

1. Select the **EntireX Broker** node below the EntireX node in **System Management**.
2. Select the broker name to be administered.
3. From the context menu, choose **Download Log File**.

A message "Download file from host" appears and after it a hyperlink labeled **Download**.

4. Follow the hyperlink **Download**.



5. Use the ensuing dialog box to save the log file on the local machine.

Setting the Local Broker Autostart Value

The autostart value of a broker instance determines whether it will be started when the computer is restarted.

> To set the Autostart value

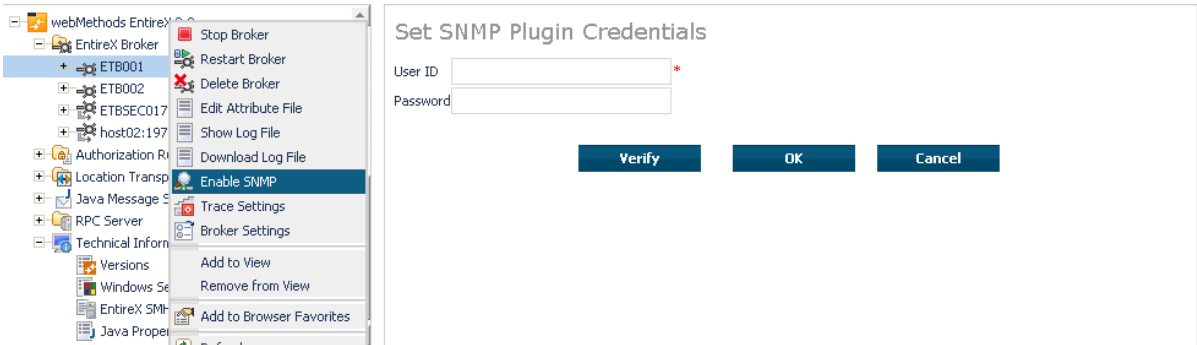
1. Select the **EntireX Broker** node below the EntireX node in **System Management**.
2. Select the broker name to be administered.
3. If the broker instance is currently started automatically, only the **Turn off Autostart** command is visible; if the broker instance is currently *not* started automatically, the **Turn on Autostart** command is visible.
4. Choose either **Turn on Autostart** or **Turn off Autostart**.

Enabling the SNMP Plug-in

Before a broker can be administered by SNMP, the SNMP plug-in must be enabled. In addition, the SNMP Plug-in credentials (user ID and password) must be set.

> To enable the SNMP plug-in

1. Select the **EntireX Broker** node below the EntireX node in **System Management**.
2. Select the broker.
3. From the context menu, choose **Enable SNMP**.
4. Enter a user ID and password that are valid for the broker instance.
5. Choose **Verify** to check if a logon to the broker is okay with the SNMP plug-in credentials, or click **OK** to save the SNMP plug-in credentials without any verification.
6. Choose **Close** when the Success message is displayed.



Disabling the SNMP Plug-in

> To disable the SNMP plug-in

1. Select the **EntireX Broker** node below the EntireX node in **System Management**.
2. Select the broker.
3. From the context menu, choose **Disable SNMP**.
4. Choose **Close** when the Success message is displayed.