

Managing the List of Brokers with SMH

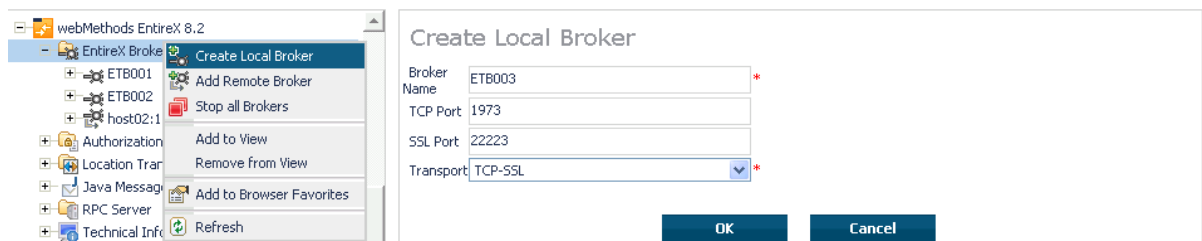
- Creating a Local Broker
- Deleting a Local Broker
- Adding a Remote Broker Instance to System Management Hub
- Removing a Remote Broker Instance from System Management Hub
- Stopping All Local Brokers from System Management Hub
- Setting the User Credentials for a Broker Instance
- Clearing the User Credentials for a Broker Instance
- Setting SSL or TLS Parameters

See also *Administration Service Messages*.

Creating a Local Broker

➤ To create a local broker

1. Select the **EntireX Broker** node below the EntireX node in **System Management**.
2. From the context menu, choose **Create Local Broker**.
3. Enter **Broker ID**, **TCP Port Number**, and **SSL Port Number**. The valid port number range is 1024 - 65535.
4. Select a transport method.
5. Choose **OK**.



When a local broker is added using SMH, a working directory is created for the new broker in the EntireX directory *config/etb*. This directory contains an attribute file, and the SSL certificates from the EntireX directory *config/etb* are also copied to this directory. If the broker is to use its own SSL certificates, these must be replaced or the attribute file modified accordingly.

The attributes of the new broker are checked. If, for example, a broker already exists with the specified port, a corresponding error message is given.

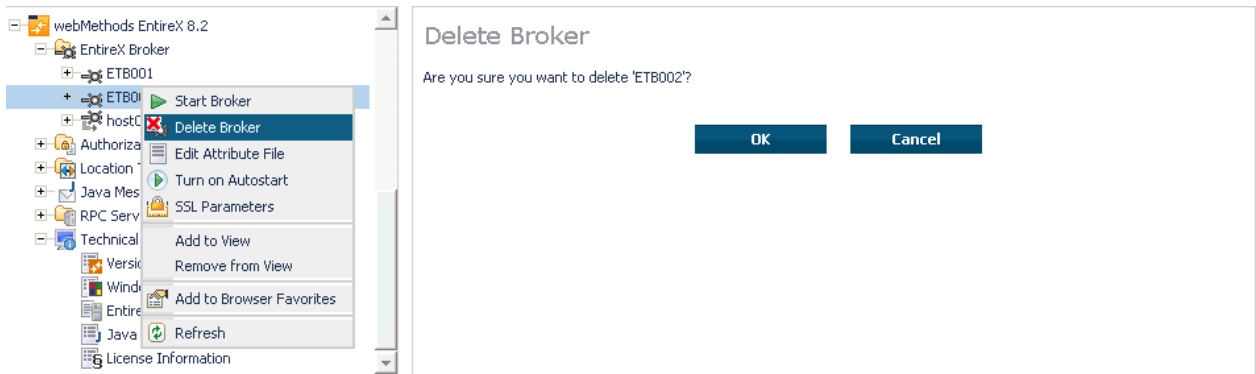
Deleting a Local Broker

➤ To delete a local broker

1. Select the **EntireX Broker** node below the EntireX node in **System Management**.
2. Select the broker name to be deleted.
3. From the context menu, choose **Delete Broker**.
4. Choose **OK**.

Deleting a Local Broker

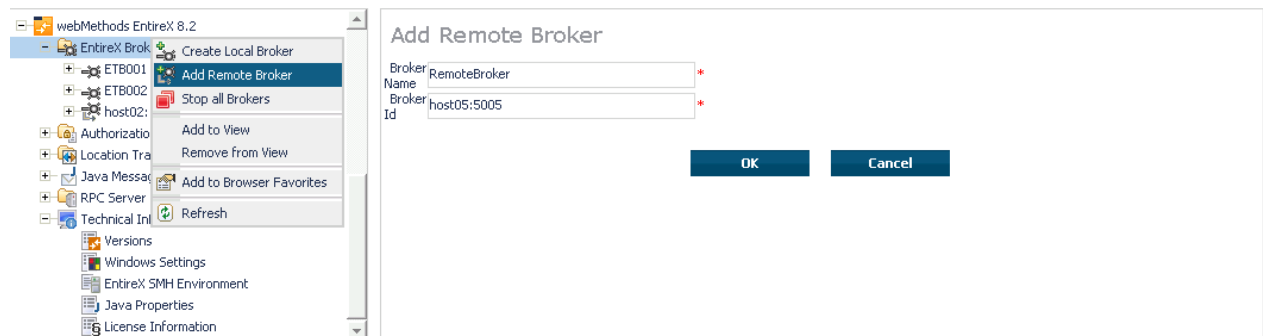
Managing the List of Brokers with SMH



Adding a Remote Broker Instance to System Management Hub

➤ To add a remote broker instance to System Management Hub

1. Select the **EntireX Broker** node below the EntireX node in **System Management**.
2. From the context menu, choose **Add Remote Broker**.
3. In the field **Broker Name**, enter a valid name. Permitted characters are A-Z, a-z, 0-9.
4. In the field **Broker ID**, enter the ID of an existing broker. Permitted formats: host:port[:protocol], protocol://host:port[?sslparameters].
5. Choose **OK**.

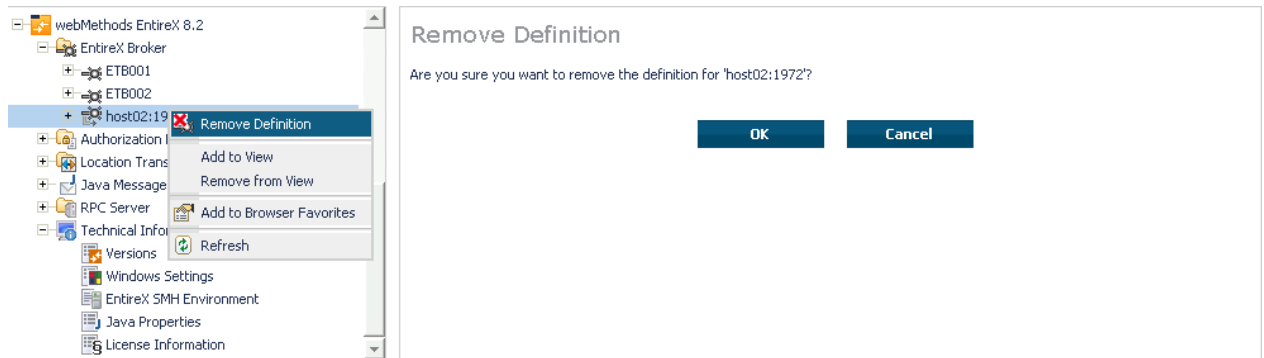


Function **Add Remote Broker** creates a directory for a remote broker. The working directories for a remote broker start with "RB". This directory contains an attribute file with the URL of the remote broker. This directory will also be used for transferring the log and attribute files to or from the remote broker. If the broker can only be addressed using the SSL protocol, the SSL certificates should also be stored in this directory. When a remote broker is added, the default SSL certificates from the EntireX *config/etb* directory are copied to the working directory of the remote broker. If this broker is to use other certificates, replace them manually.

Removing a Remote Broker Instance from System Management Hub

➤ To remove a remote broker instance from System Management Hub

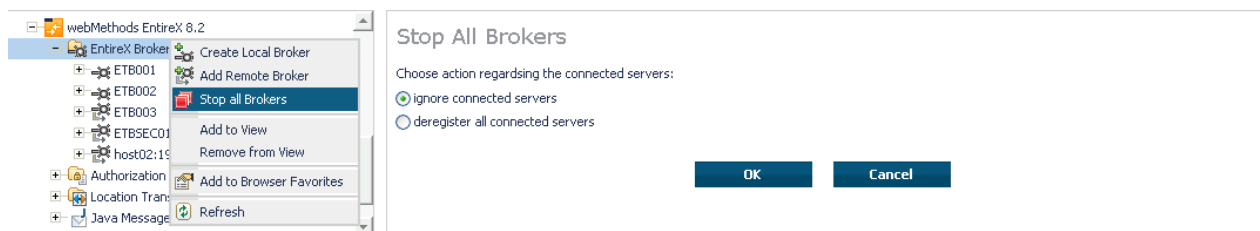
1. Select the **EntireX Broker** node below the EntireX node in **System Management**.
2. Select the remote broker instance to be removed.
3. From the context menu, choose **Remove Definition**.
4. Choose **OK**.



Stopping All Local Brokers from System Management Hub

➤ To stop all local brokers from System Management Hub

1. Select the **EntireX Broker** node below the **EntireX** node in **System Management**.
2. From the context menu, choose **Stop All Brokers**.
3. Choose the stop mode.
4. Choose **OK** to confirm deregistration.

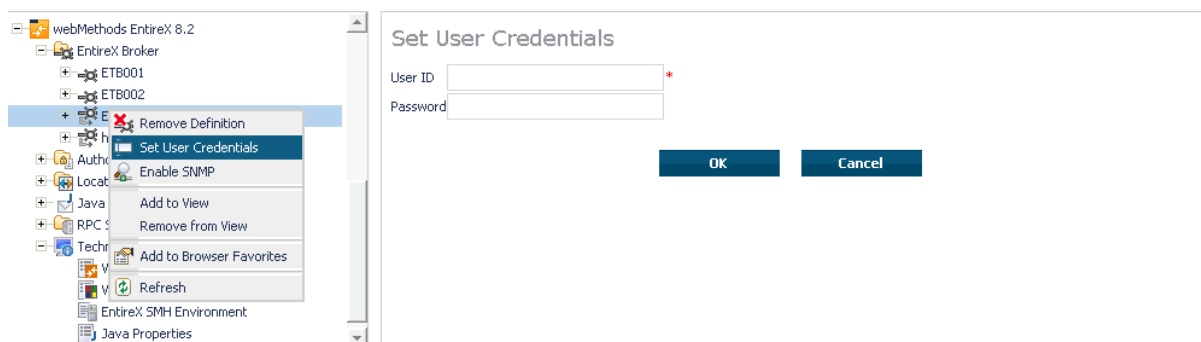


Setting the User Credentials for a Broker Instance

Before a remote broker instance or instance of a local broker that uses LDAP authentication can be administered, user credentials (user ID and password) must be set.

➤ To set user credentials

1. Select the **EntireX Broker** node below the EntireX node in **System Management**.
2. Select the broker instance.
3. From the context menu, choose **Set User Credentials**.
4. Enter a **User ID** and **Password** that are valid for the broker instance.
5. Choose **OK**.
6. Choose **OK** when the success message is displayed.



Clearing the User Credentials for a Broker Instance

Once a remote broker instance has been administered, the user credentials should be cleared.

> To clear user credentials

1. Select the **EntireX Broker** node below the EntireX node in **System Management**.
2. Select the broker instance.
3. From the context menu, choose **Clear User Credentials**. A confirmation screen will appear.
4. Choose **OK** or **Cancel**.
5. Choose **OK** when the success message is displayed.

Setting SSL or TLS Parameters

> To edit a broker SSL file

1. Select the **EntireX Broker** node below the **webMethods EntireX** node in System Management Hub.
2. Select the broker name to be administered.
3. Choose **SSL Parameters**.
4. Make your changes.
5. Choose **Save**.

