

webMethods EntireX

General Installation Information

Version 9.6

April 2014

This document applies to webMethods EntireX Version 9.6.

Specifications contained herein are subject to change and these changes will be reported in subsequent release notes or new editions.

Copyright © 1997-2014 Software AG, Darmstadt, Germany and/or Software AG USA, Inc., Reston, VA, USA, and/or its subsidiaries and/or its affiliates and/or their licensors..

The name Software AG and all Software AG product names are either trademarks or registered trademarks of Software AG and/or Software AG USA, Inc. and/or its subsidiaries and/or its affiliates and/or their licensors. Other company and product names mentioned herein may be trademarks of their respective owners.

Detailed information on trademarks and patents owned by Software AG and/or its subsidiaries is located at <http://documentation.softwareag.com/legal/>.

Use of this software is subject to adherence to Software AG's licensing conditions and terms. These terms are part of the product documentation, located at <http://documentation.softwareag.com/legal/> and/or in the root installation directory of the licensed product(s).

This software may include portions of third-party products. For third-party copyright notices and license terms, please refer to "License Texts, Copyright Notices and Disclaimers of Third-Party Products". This document is part of the product documentation, located at <http://documentation.softwareag.com/legal/> and/or in the root installation directory of the licensed product(s).

Document ID: EXX-INSTALL-96-20140628GENERAL

Table of Contents

Preface	v
1 License Concept for webMethods EntireX	1
License Key Checks	2
License Key for z/OS received by E-Mail	2
License Key on UNIX and Windows	3
License Key under z/VSE	4
2 Software AG Mainframe Product Licensing	5
Distributed License Check Software	6
License File	7
Copying a License File to Disk	8
Transferring a License File from PC to a z/OS Host Using FTP	8
Transferring a License File from PC to a z/VSE Host Using FTP	9
Transferring a License File from PC to a BS2000/OSD Host Using FTP	10
Product License Check FAQs	11
Using the License Utility: LICUTIL	15
3 Port Numbers in EntireX	27
Ensuring Unique Port Numbers	28
Port Number Configuration	28
4 Migrating EntireX Data from Earlier Versions	31
Migrating EntireX Broker Data	32
Migrating Authorization Rules	33
Migrating RPC Servers	33
Migrating Web Services	34
Migrating XML/SOAP Components	34
Eclipse Workbench Considerations	36
5 Installing Fixes from the Software AG Update Manager	41
Installation Steps	42
Verifying the Fix Version	45
Uninstalling the Fix Version	46
6 Installing the EntireX Workbench Plug-ins in Standalone Mode	47
Prerequisites	48
Scope	48
Eclipse 4.3 Considerations	48
Installation Steps	49
Configuring the License	50
Uninstalling the EntireX Workbench Plug-ins	51

Preface

Under UNIX and Windows, EntireX is now installed using the Software AG Installer, which you download from the Software AG Empower website at <http://empower.softwareag.com/>. You can view the documentation for the Software AG Installer under *webMethods Product Documentation > webMethods Product Suite > Documentation by Product > System Requirements, Installation, and Upgrade* on the [Software AG Product Documentation](#) website.

The EntireX installation documentation for UNIX and Windows assumes you have successfully installed the product using the Installer.

This section covers the following topics:

<i>License Concept</i>	License Concept for webMethods EntireX.
<i>Software AG Mainframe Product Licensing</i>	Software AG's mainframe product licensing procedures, license check software and license file.
<i>Port Numbers</i>	Ensuring unique port numbers; port number configuration.
<i>Migration</i>	Migrating EntireX data from an earlier version (UNIX and Windows).
<i>Installing Fixes</i>	Installing fixes from the Software AG Update Manager.
<i>Workbench Plug-ins</i>	Installing the EntireX Workbench Plug-ins in Standalone Mode.

1 License Concept for webMethods EntireX

▪ License Key Checks	2
▪ License Key for z/OS received by E-Mail	2
▪ License Key on UNIX and Windows	3
▪ License Key under z/VSE	4

License Key Checks

EntireX on all applicable platforms must have a valid license key. If the license key does not match for a component, the component cannot be used. The license is checked during installation and when the component is started.

For EntireX Broker, the license file is checked once daily. If the license file is due to expire in the next 30 days, a warning is issued. This is written to the log file.



Note: The documentation delivered with this product covers all components of EntireX on all platforms, including those for which you may not have a valid license. The inclusion of a component or feature in this documentation does not imply that this component/feature is available for your installed version of the product.

License Key for z/OS received by E-Mail

Normally the EntireX license key is delivered directly on the installation medium as file EXX960.LICS. This file contains the license information necessary to start EntireX broker. It is no longer necessary to transfer the file to the host file system.

However, if you received the EntireX license key file EXX960.LICS by e-mail or diskette, you need to transfer this file to the host file system, using FTP. You will need:

- an FTP client (comes with Windows) and an FTP server on the mainframe, or
- an FTP server on Windows and an FTP client on the mainframe.

▶ To transfer license file EXX960.LICS to your mainframe host

- 1 Transfer the file EXX960.XML to the host, using FTP.

As the target of the host, use the data set EXX960.LICS provided with the EntireX kit or allocate a new data set on z/OS with the following attributes:

```
DSORG=PS
RECFM=FB
BLKSIZE=800
LRECL=80
```

You must use *binary* transfer mode to transfer the file EXX960.XML to the host. This ensures that the license key remains unaltered.



Note: You cannot "cut and paste" the certificate using a 3270 emulator due to format incompatibilities: the mainframe is an EBCDIC system, whereas the certificate is an ASCII-formatted binary file.

- 2 Ensure that the LICENSE DD card in the broker startup JCL references data set EXX960.LICS.

Example FTP Commands

```
open <host>
<userid>
<password>
binary
put EXX960.xml '<hlq>.EXX960.LICS'
close
bye
```

License Key on UNIX and Windows

On UNIX and Windows platforms, the XML file is requested during installation and must be provided by the user performing the installation. The location of license file after installation is shown below

Operating System	Default Location of License Key File
Windows	<webMethods Installation Directory>\common\conf
UNIX	<webMethods Installation Directory>/common/conf

For future flexibility, the location of the license file is no longer fixed. Although the location after installation is as mentioned above, the license file can moved to a different location. The new file *entirex.config* at a fixed location contains the path to the license file. The location of this file is shown below:

Operating System	Location <i>entirex.config</i>
Windows	<webMethods Installation Directory>\EntireX\config
UNIX	<webMethods Installation Directory>/EntireX/config

File *entirex.config* contains an entry for the path of the license file, under Windows for example:

```
entirex.license.file="<webMethods Installation  
Directory>\common\conf\EXX960.xml"
```

If you want to change the location of the license file, adapt the entry in *entirex.config* accordingly.

License Key under z/VSE

The EntireX license file *EXX960.LICS* is delivered on the installation medium. It is referenced in the EntireX Broker startup job control. For this purpose, you can copy the license file to a sublibrary or to a sequential disk file. See *Step 2: Install the EntireX License File* for detailed information.

2 Software AG Mainframe Product Licensing

- Distributed License Check Software 6
- License File 7
- Copying a License File to Disk 8
- Transferring a License File from PC to a z/OS Host Using FTP 8
- Transferring a License File from PC to a z/VSE Host Using FTP 9
- Transferring a License File from PC to a BS2000/OSD Host Using FTP 10
- Product License Check FAQs 11
- Using the License Utility: LICUTIL 15

This document describes Software AG's mainframe product licensing procedures, license check software and license file.

Notations Used in this Document:

- *vrs, vr* or *v.r.s*:
When used in this document, the notation *vrs*, *vr* or *v.r.s* represents the three-digit or two-digit version number of the Software AG product.
- *ppp*:
When used in this document, the notation *ppp* represents the three-character product code of the Software AG product: ADA for Adabas, NAT for Natural, EXX for EntireX, COM for Complete, WCP for Entire Net-Work and NPR for Entire System Server.

Distributed License Check Software

This section describes the data sets (files) containing this software. All licensing data sets have names starting with the characters MLC. The *vrs* in the names represents the version of the license check software, which is not necessarily the same as the version of your Software AG mainframe product.

For instructions on copying the data sets from the product installation medium to disk and loading the libraries contained on the data set, refer to the appropriate installation procedure for your mainframe product.

- [z/OS Licensing Data Sets](#)
- [z/VSE Licensing Data Sets](#)
- [BS2000/OSD Licensing Data Sets](#)

z/OS Licensing Data Sets

The following licensing data sets are provided in z/OS environments:

Data Set Name	Description
MLC <i>vrs</i> .LOAD	Mainframe license check load modules
MLC <i>vrs</i> .JOBS	Mainframe license check sample jobs

z/VSE Licensing Data Sets

The following licensing data sets are provided in z/VSE environments:

Data Set Name	Description
MLC <i>vrs</i> .LIBR	Mainframe license check load modules
MLC <i>vrs</i> .LIBJ	Mainframe license check sample jobs

BS2000/OSD Licensing Data Sets


The following licensing data sets (files) are provided in BS2000/OSD environments:

Data Set Name	Description
MLC <i>vrs</i> .MOD	Mainframe license check load modules
MLC <i>vrs</i> .JOBS	Mainframe license check sample jobs

License File

You must install a valid license file on all mainframe platforms in which your Software AG mainframe product is installed.

The license file is provided as an XML document (encoding is US-ASCII). This document can be viewed using a browsing tool or text editor on a PC. It can also be viewed on the mainframe using the **DISPLAY** function of the license utility, LICUTIL, described later in this document. The license file contains text, which represents the licensing information and a digital signature, the license key. Among other things, it displays Software AG legal notices and environmental information.

 **Caution:** The license file must remain in ASCII format -- even on the mainframe. It must not be modified. Any modification of the license file will invalidate the digital signature and the license check will fail. If the check fails, please contact your Software AG technical support representative.

Delivery and Installation

Your individual product license is shipped on the product installation medium as *pppvrs*.LICS data set (file) or as an e-mail attachment in the file format *pppvr.xml*.

Once the license file is received, either copy it from the product installation medium to disk or use native FTP commands to transfer it to your mainframe host before using it during the mainframe product installation.



During the mainframe product installation process, the license file is then loaded and processed as required by your Software AG mainframe product. Refer to the appropriate installation procedure for your Software AG mainframe product for further information.

Copying a License File to Disk

For instructions on copying a `pppvr.s.LICS` data set (file) from the product installation medium to disk, refer to the appropriate installation procedure for your Software AG mainframe product.

Transferring a License File from PC to a z/OS Host Using FTP

If a license file is supplied as an e-mail attachment, you must transfer the attached license file from the PC to the mainframe using native FTP commands provided in this section.

-  **Caution:** Using utilities instead of native FTP commands for the license file transfer may corrupt the license key.
-  **Important:** Make sure to switch to binary transfer and verify that the resulting data set has `RECFM=FB` or `RECFM=F` and `LRECL=80`.

▶ **To transfer a license file from the PC to a z/OS host, perform the following steps:**

- 1 Save the product license file e-mail attachment as `pppvr.xml` on your PC's hard disk.
- 2 Start an FTP session for communication with the z/OS host using the following FTP command:

```
ftp host-name
```

where `host-name` is the name of the z/OS host.

Enter your z/OS host login ID and password.

- 3 Switch to binary data mode (the license file must retain its format as ASCII during the transfer):

```
binary
```

- 4 Specify that the data set for the license file must be written with `RECFM=FB` and `LRECL=80`:

```
quote site RECFM=FB LRECL=80 BLKSIZE=4000
```

RECFM=F is also supported for product license files.

- 5 Write the license file as a data set on the z/OS system:

```
put pppvr.xml 'hilev.pppvrs.LICS'
```

where *hilev* is the high-level qualifier (for example, *SAG*) to be used for the data set.

This command will create a data set called *hilev.pppvrs.LICS* with RECFM=FB, LRECL=80, and the license information stored in the data set will be in ASCII format.

Transferring a License File from PC to a z/VSE Host Using FTP

If a license file is supplied as an e-mail attachment, you must transfer the attached license file from the PC to the mainframe using native FTP commands described in this section.

The FTP sample session described in these steps loads the license file onto a member of a z/VSE library. It is possible to load the license file onto a sequential z/VSE data set instead. For more information, refer to your FTP documentation.



Caution: Using utilities instead of native FTP commands for the license file transfer may corrupt the license key.



Important: Make sure to switch to binary transfer and verify that the resulting data set has RECFM=FB or RECFM=F and LRECL=80.

▶ To transfer a license file from the PC to a z/VSE host, perform the following steps:

- 1 Save the product license file e-mail attachment as *pppvr.xml* on your PC's hard disk.
- 2 Start an FTP session for communication with the z/VSE host using the following FTP command:

```
ftp host-name
```

where *host-name* is the name of the z/VSE host.

Enter your z/VSE host login ID and password.

- 3 Once the FTP session has been established, you can optionally delete the default working prefix. To determine what the default working prefix is, enter the following command:

```
pwd
```

To delete the default working prefix, enter the following command:

```
cd ..
```

- 4 Point to the z/VSE sublibrary for the license file, for example, USERLIB.MYSUBLIB:

```
cd USERLIB.MYSUBLIB
```

- 5 Switch to binary data mode (the license file must retain its ASCII format during the transfer):

```
binary
```

- 6 Specify that the data set for the license file must be written with RECFM=FB and LRECL=80:

```
quote site recfm fb 80
```

RECFM=F is also supported for product license files.

- 7 Write the license as a member in the libraries on the z/VSE system you identified in Step 4:

```
put pppvr.xml pppvrs.LICS
```

This command will write the license file *pppvr.xml* to a member called *pppvrs.LICS*. If you requested a library and sublibrary of USERLIB and MYSUBLIB in Step 4, the *pppvrs.LICS* file would reside in the USERLIB.MYSUBLIB library. The data set will have RECFM=FB, LRECL=80, and the license information stored in the member will be in ASCII format.

Transferring a License File from PC to a BS2000/OSD Host Using FTP

If a license file is supplied as an e-mail attachment, you must transfer the attached license file from the PC to the mainframe using native FTP commands described in this section.



Caution: Using utilities instead of native FTP commands for the license file transfer may corrupt the license key.



Important: Make sure to switch to binary transfer and verify that the resulting data set has file type SAM and RECFORM=V.

▶ **To transfer a license file from the PC to a BS2000/OSD host, perform the following steps:**

- 1 Save the product license file e-mail attachment as *pppvr.xml* on your PC's hard disk.

- 2 Start an FTP session for communication with the BS2000/OSD host using the following FTP command:

```
ftp host-name
```

where *host-name* is the name of the BS2000/OSD host.

Enter your BS2000/OSD host user ID, password and account number (if relevant).

- 3 Switch to binary data mode (the license file must retain its ASCII format during the transfer):

```
binary
```

- 4 Specify that the file for the license file must be written with `FCBTYPE=SAM` and `RECFORM=V`:

```
quote file pppvr.LICS,FCBTYPE=SAM,RECFORM=V
```

- 5 Write the license file to the BS2000/OSD host:

```
put pppvr.xml pppvr.LICS
```

Product License Check FAQs

- Why has Software AG introduced a license check for products on the mainframe?
- Which information is contained in a product license?
- What exactly is meant by the CPU ID?
- Which Software AG mainframe products require a product license?
- How is the product license file installed?
- How can I read the product license file?
- How can I display machine-specific data?
- When is the product license checked?
- Which items of a product license are checked?
- Does the Software AG mainframe license check software support a disaster recovery scenario?
- What happens if the product license is incorrect, insufficient or not installed?
- How can I get a new product license file if the delivered license file is insufficient for my environment?

- Do I need separate product licenses for different machines?

Why has Software AG introduced a license check for products on the mainframe?

Software AG wants to ensure that customers run our software products only on mainframe machines for which they have valid and sufficient product licenses. This ensures that we have better control of the use of our software products. On other platforms (UNIX, Windows), the product license check has been established for many years.

Which information is contained in a product license?

A product license is a sequential file with US-ASCII text in XML format containing the following items:

- Software AG header
- customer information (Name, ID)
- encrypted license key
- license expiration date (or unlimited)
- product information (product code, version, name)
- environment information (operating system type, CPU ID, LPAR ID, system name, capacity)

What exactly is meant by the CPU ID?

IBM defines the CPU ID as the “central processing complex node descriptor sequence number”. It is the unique hexadecimal machine serial number without the machine model number.

The CPU ID and other machine data can be viewed by using the **DISPLAY** function of the license utility, LICUTIL, described later in this document.

Which Software AG mainframe products require a product license?

- Adabas
- Natural
- EntireX
- Com-plete
- Entire Net-Work
- Entire System Server

How is the product license file installed?

Transfer the license file from the product installation medium or PC to disk as described in the installation documentation for your Software AG mainframe product or the various *Transferring a License File from PC to a xxx Host* section sections respectively. Then proceed as described in the appropriate installation steps for your mainframe product.

How can I read the product license file?

- The product license file can be read on a PC by means of an XML editor (file type .xml) or any PC text editor.
- The license utility, LICUTIL, provided with the Software AG mainframe license check software includes a function that allows you to display the license (**DISPLAY** function). For more information about the license utility, read [Using the License Utility: LICUTIL](#).
-

How can I display machine-specific data?

The license utility, LICUTIL, provided with the Software AG mainframe license check software includes a function that allows you to display machine-specific data (**DISPLAY** function). For more information about the license utility, read [Using the License Utility: LICUTIL](#).

When is the product license checked?

The product license is checked every time the product is initialized. In addition, the product license is checked once a day.

Thirty days before the license expires, license check failure messages will warn you that it is time to obtain a new license.

If a license check fails, contact your Software AG technical support representative.

Which items of a product license are checked?

Product license items are divided into three logical license groups (License Key, Product-Specific Information and Machine-Specific Information) and checked in that order. If an inconsistency in any one of these groups is detected by the license checker, the succeeding items of that logical license group are also checked. Then the check terminates with corresponding error messages. For example, if the license key expires, the license key check terminates with an error before the license checker checks any product-specific or machine-specific information.

The following table identifies the product license items comprising each logical group:

Checking Order	Logical License Group Name	Product License Item Included
1	License Key	The encrypted license key
2	Product-Specific Information	<ul style="list-style-type: none"> ■ The expiration date (if any) ■ The operating system (z/OS, z/VSE or BS2000/OSD) ■ The product code (for example, ADA, NAT or EXX) ■ The product version, in either <i>v.r.</i> or <i>v.r.s</i> format.
3	Machine-Specific Information	<ul style="list-style-type: none"> ■ The machine CPU ID ■ The machine capacity (only in z/OS and z/VSE environments) ■ The logical partition (LPAR) ID (if applicable)

Does the Software AG mainframe license check software support a disaster recovery scenario?

Yes. Please contact your Software AG sales representative to obtain a license file which is able to support disaster recovery scenarios. The parameter DisasterRecoveryCPUIDs in this license file allows you to specify one or more CPU IDs of the machines to be used when your production machine fails. If you do not have these CPU IDs available, it is possible to specify the value `Unknown`. In this case, the license checker issues a warning message when a disaster recovery scenario is assumed.

In a disaster recover scenario, no machine data besides the CPU ID is checked.

What happens if the product license is incorrect, insufficient or not installed?

Thirty days before the license expires, license check failure messages will warn you that it is time to obtain a new license.

How can I get a new product license file if the delivered license file is insufficient for my environment?

Contact your Software AG sales representative to get a correct product license file according to your contract. It can be shipped by e-mail either in ASCII format or in the converted assembler input format.

Do I need separate product licenses for different machines?

No, it is possible to have multiple CPU IDs defined in one license file.

Using the License Utility: LICUTIL

The license utility, LICUTIL, is a batch utility that is used to check the license file, convert the license file into an assembler source module and display the license file and machine data.

LICUTIL is provided with Software AG's mainframe license check software contained on the data sets MLC*vrs*.LOAD (z/OS), MLC*vrs*.MOD (BS2000/OSD) and MLC*vrs*.LIBR (z/VSE).

Error messages for the license utility are documented with the rest of your Software AG product messages.

This section provides detailed information of each function provided by the LICUTIL utility. The functions can be executed by using the sample JCL described later in this section. The syntax of the functions that can be supplied with the LICUTIL command is shown in the following diagram:

CHECK	
DISPLAY	{ALL LICENSE MACHINE}
END EXIT	
HELP	
LOADLIC	<i>module-name</i>
MAKE	
SET	{ DATE={ <i>yyyy-mm-dd</i> <i>yyyymmdd</i> } FORMAT={FREE LEFT STRUCTURED} PRODVER= <i>pppv.r.s</i> RMODE={ANY 24} }

The parameters and variable values that can be supplied with each function, are described in the following section. For explanations of the syntax symbols used in the diagram, please read the documentation for your specific Software AG mainframe product.

- CHECK Function: Check the Product License
- DISPLAY Function: Display License Items and Machine Data
- END/EXIT Functions: Terminate the License Utility
- HELP Function: View LICUTIL Help
- MAKE Function: Convert the License File to Assembler Source
- LOADLIC Function
- SET Function: Set LICUTIL Options
- JCL Examples and Requirements

- LICUTIL Licensing Messages

CHECK Function: Check the Product License

The CHECK function can be used to check the license file against the product's execution environment. The original license file must be provided as input along with the product code and version. If the license file is not valid, appropriate error messages are returned.



Important:

There are no parameters, however, to run the CHECK function successfully, you must have previously specified the **SET PRODVER** function to provide the product code and version number.

The following items are checked, in the following order:

1. License key.
2. Product-specific data, including the product code, version, operating system and expiration date.
3. Machine-specific data, including the CPU IDs, the capacity (on only z/OS and z/VSE systems) and the logical partition (LPAR) ID.

DISPLAY Function: Display License Items and Machine Data

Use the DISPLAY function to display the contents of the product license items (license file, product-specific information and machine-specific information) and to display machine data (CPU ID, machine type, model ID, LPAR ID, MSU) about the machine on which the utility is being run.

The parameters of this function are described in the following table. At least one parameter is required.

Parameter	Description
ALL	Display the product license items and machine data. ALL is the default.
LICENSE	Display only the product license items.
MACHINE	Display only the machine data.

END/EXIT Functions: Terminate the License Utility

Use the END or EXIT function to terminate the license utility. These functions should be used if LICUTIL is running interactively in environments other than batch (for example, TSO under z/OS).

HELP Function: View LICUTIL Help

Use the HELP function to review a list of the available LICUTIL functions and their syntax.

MAKE Function: Convert the License File to Assembler Source

Use the MAKE function to convert the license file into an assembler source. After assembling this source (and linking it), the resulting license module can be used by defined Software AG products (for example, Adabas or Natural) instead of the license files. For more information about using license modules, refer to the installation documentation provided with your Software AG product.

Sample Output

Here is some sample output from this function when run on a z/OS system:

```
MLC9006 License converted to assembler output. 042 records written  
to SYSUT2.
```

LOADLIC Function

This function applies only on z/OS.

Use the LOADLIC function to load the license module after you converted (**MAKE** function), assembled and linked the assembler source. *module-name* denotes the name of the license module in the load library.

LOADLIC can be specified only once per LICUTIL session.

After the license module has been successfully loaded by LOADLIC, you can further process the module using other LICUTIL functions such as **CHECK** and **DISPLAY**.

SET Function: Set LICUTIL Options

Use the SET function to set options for the license utility.

The parameters of this function are described in the following table. At least one parameter is required.

Parameter	Description
DATE	Sets the date for the license check. The default is today. The format of the date can be either <i>yyyy-mm-dd</i> or <i>yyyymondd</i> , where <i>yyyy</i> is the four-character year, <i>mm</i> is the two-digit month, <i>mon</i> is the three-character month abbreviation and <i>dd</i> is the two-digit day.
FORMAT	Sets the display format for the DISPLAY function. There are three different formats: <ul style="list-style-type: none"> ■ Specify FREE (the default) to produce output without XML tags. ■ Specify LEFT to produce output with each XML tag in a new line. ■ Specify STRUCTURED to produce output with each XML tag indented.
PRODVER	Sets the product code and version for the CHECK function. The format in which the product code and version should be specified is <i>pppv.r.s</i> .
RMODE	Sets the RMODE for the assembler source produced by the MAKE function: <ul style="list-style-type: none"> ■ Specify 24 (the default) for 24-bit addressing mode. ■ Specify ANY for either 24- or 31-bit addressing mode.

JCL Examples and Requirements

Sample JCL of the license utility functions can be found in the following members of the licensing data sets (files): `MLCvrs.JOBS` for z/OS and BS2000/OSD, and `MLCvrs.LIBJ` for z/VSE.

Member	Functions Included	Demonstrates how to...
LICCHECK	SET PRODVER= <i>pppv.r.s</i> DISPLAY CHECK	Check a license file with LICUTIL.
LICMAKE	MAKE	Convert the license file to assembler source.
LICMDATA	DISPLAY MACHINE	Display machine data. This function can be used to send Software AG the required data for a license file.

This section covers the following topics:

- [z/OS JCL Requirements](#)
- [z/VSE JCL Requirements](#)

- BS2000/OSD JCL Requirements

z/OS JCL Requirements

The following file assignments are used by the license utility in z/OS environments:

DD Name	Description
SYSIN	Input of LICUTIL control parameters.
SYSPRINT	Output of LICUTIL run.
SYSUT1	Input of original license file (<i>pppvrs.LICS</i> data set).
SYSUT2	Output of license converted to assembler source.

The following table shows which file assignments are required in the JCL by each LICUTIL function (an X in a table cell indicates that the file assignment is required; a blank cell indicates that file assignment is not required):

License Utility Function	DD Name			
	SYSIN	SYSPRINT	SYSUT1	SYSUT2
CHECK	X	X	X	
DISPLAY ALL	X	X	X	
DISPLAY LICENSE	X	X	X	
DISPLAY MACHINE	X	X		
MAKE	X	X	X	X
HELP	X	X		

z/VSE JCL Requirements

The following file assignments are used by the license utility in z/VSE environments:

File Assignment	Description
SYSIPT	Input of LICUTIL control parameters and the input of original license file (<i>pppvrs.LICS</i> data set). Note: The license file has to be stored in a sublibrary.
SYSLIST	Output of LICUTIL run.
SYSPCH	Output of license converted to assembler source.

The following table shows which file assignments are required in the JCL by each LICUTIL function (an X in a table cell indicates that the file assignment is required; a blank cell indicates that file assignment is not required):

License Utility Function	File Assignment		
	SYSIPT	SYSLIST	SYSPCH
CHECK	X	X	
DISPLAY ALL	X	X	
DISPLAY LICENSE	X	X	
DISPLAY MACHINE	X	X	
MAKE	X	X	X
HELP	X	X	

BS2000/OSD JCL Requirements

The following file assignments are used by the license utility in BS2000/OSD environments:

System File	Description
SYSDTA	Input of LICUTIL control parameters.
SYSOUT	Output of LICUTIL run.
Link Name	
SYSUT1	Input of original license file (<i>pppvrs.LICS</i> data set).
SYSUT2	Output of license converted to assembler source.

The following table shows which file assignments are required in the JCL by each LICUTIL function (an X in a table cell indicates that the file assignment is required; a blank cell indicates that file assignment is not required):

License Utility Function	File Assignment			
	SYSDTA	SYSOUT	SYSUT1	SYSUT2
CHECK	X	X	X	
DISPLAY ALL	X	X	X	
DISPLAY LICENSE	X	X	X	
DISPLAY MACHINE	X	X		
MAKE	X	X	X	X
HELP	X	X		

LICUTIL Licensing Messages

The messages in this document may be produced when using the LICUTIL utility.

MLC1001	CPU-ID {cpuid} is not defined in your product license
Explanation	The CPU ID listed in the message (<i>cpuid</i>) is not defined in your product license. Either your license file is invalid or you have attempted to run the Software AG mainframe product on a machine for which it is not licensed.
Action	Install and run the Software AG product on the machine for which it is licensed. If the problem persists, contact your Software AG sales representative for assistance.
MLC1002	LPAR name {lparname} is not defined in your product license
Explanation	The LPAR name listed in the message (<i>lparname</i>) is not defined in your product license. Either your license file is invalid or you have attempted to run the Software AG mainframe product on a machine for which it is not licensed.
Action	Install and run the Software AG product on the machine for which it is licensed. If the problem persists, contact your Software AG sales representative for assistance.
MLC1003	Machine capacity {value} higher than MSUs in your product license
Explanation	The machine or the partition capacity (<i>value</i>) of the CEC or LPAR respectively on which you have attempted to install and run the Software AG mainframe product exceeds the capacity allowed in your product license. Either your license file is invalid or you have attempted to run the Software AG mainframe product on a machine for which it is not licensed.
Action	Contact your Software AG sales representative for assistance.
MLC1004	The product license will expire on {timestamp}
Explanation	This warning message provides the date and time (<i>timestamp</i>) when the license will expire for this Software AG mainframe product.
Action	No action is required for this warning message. However, you should contact your Software AG sales representative to obtain an updated license soon.
MLC1005	We assume CPU-ID {cpuid} as your DR or DR testing environment
Explanation	The CPU ID listed in the message (<i>cpuid</i>) is not defined in your product license. Therefore we assume that you are running in a disaster recovery environment.
Action	If you are running in a disaster recovery environment, no action is required for this warning message. If you are not running in a disaster recovery environment, contact your Software AG sales representative to obtain an updated license.

MLC2001	The product license is invalid
Explanation	Your product license is invalid.
Action	Contact your Software AG sales representative for assistance.
MLC2002	The product license key is invalid
Explanation	The license file for the Software AG mainframe product is invalid.
Action	Verify that the license file was transferred correctly to the mainframe host and that it is still in ASCII format. If the problem persists, contact your Software AG sales representative for assistance.
MLC2003	The product license is not for {value}
Explanation	The license file for the Software AG mainframe product is not for the operating system (OS), product code, or product version listed in the message (<i>value</i>).
Action	Use the correct license file. If the problem persists, contact your Software AG sales representative for assistance.
MLC2004	The product license has expired on {timestamp}
Explanation	The product license has expired. The date and time it expired is given in the message (<i>timestamp</i>).
Action	Contact your Software AG sales representative for assistance.
MLC2005	Tag missing in product license: {tagname}
Explanation	The tag with the name listed in the message (<i>tagname</i>) is missing in your product license.
Action	Contact your Software AG sales representative for assistance.
MLC2006	Invalid tag value in product license: {tagname}
Explanation	The value of the tag with the name listed in the message (<i>tagname</i>) is invalid in your product license.
Action	Contact your Software AG sales representative for assistance.
MLC2007	Current CPU-ID not found for product license check
Explanation	The CPU ID of the CPU on which the product license check was run is not found in the license file.
Action	Contact your Software AG sales representative for assistance.

MLC2008	The number of MSU values in the product license is incorrect
Explanation	The machine capacity covered by the product license is incorrect.
Action	Contact your Software AG sales representative for assistance.
MLC2009	ExtendedRights setting {value} not allowed under this system
Explanation	The ExtendedRights setting listed in the message (<i>value</i>) is not supported by your system.
Action	Contact your Software AG sales representative for assistance.
MLC2010	Soft capping is not allowed with ExtendedRights {value}
Explanation	Your product license does not allow soft capping with the ExtendedRights setting listed in the message (<i>value</i>).
Action	Contact your Software AG sales representative for assistance.
MLC3001	Invalid LCPCB length
Explanation	The license check routine has been incorrectly called.
Action	Contact your Software AG support representative for assistance.
MLC3002	Work area too small
Explanation	The size of the work area for the license check routine is too small.
Action	Contact your Software AG support representative for assistance.
MLC3003	Invalid function code
Explanation	The license check routine has been incorrectly called.
Action	Contact your Software AG support representative for assistance.
MLC3004	Invalid operating system
Explanation	The ID of the operating system passed through the license check routine is invalid.
Action	Contact your Software AG support representative for assistance.
MLC3005	Invalid product code
Explanation	The product code passed through the license check routine is invalid.
Action	Contact your Software AG support representative for assistance.

MLC3006	Invalid product version
Explanation	The product version passed through the license check routine is not numeric.
Action	Contact your Software AG support representative for assistance.
MLC3007	Invalid current date
Explanation	The current date passed through the license check routine is invalid. The date must be in the format <i>yyyy-mm-dd</i> . The dash (-) delimiters are not checked but the numbers must be a valid year, month and day, respectively.
Action	Contact your Software AG support representative for assistance.
MLC3008	Tag not found
Explanation	The license check routine cannot find the requested XML tag.
Action	Contact your Software AG support representative for assistance.
MLC3009	Component Id tag not found
Explanation	The license check routine cannot find the XML tag <code>Component Id</code> .
Action	Contact your Software AG support representative for assistance.
MLC3010	Invalid search tag
Explanation	The XML search tag requested by the license check routine is invalid.
Action	Contact your Software AG support representative for assistance.
MLC3011	Insufficient I/O area size
Explanation	The size of the I/O area for the license check routine is too small.
Action	Contact your Software AG support representative for assistance.
MLC3012	Output record length too small
Explanation	The length of the output record for the license check routine is too small.
Action	Contact your Software AG support representative for assistance.
MLC3013	Error message text not found
Explanation	The license check routine cannot find the text that belongs to the requested error message.
Action	Contact your Software AG support representative for assistance.

MLC3014	Too many errors occurred
Explanation	The license check routine detected too many errors. Some messages are lost.
Action	Contact your Software AG support representative for assistance.
MLC9001	License exceeds maximum size of 8000
Explanation	Your license file is too large.
Action	Contact your Software AG sales representative for assistance.
MLC9002	Error opening license file input
Explanation	An error occurred during an attempt to open the license file input.
Action	Investigate the cause of the error, paying special attention to the corresponding error messages produced by the operating system. Contact your Software AG sales or support representative for assistance.
MLC9003	Error reading license file input
Explanation	An error occurred during an attempt to read the license file input.
Action	Investigate the cause of the error, paying special attention to the corresponding error messages produced by the operating system. Contact your Software AG sales or support representative for assistance.
MLC9004	Error opening license file assembler output
Explanation	An error occurred during an attempt to open the license file assembler output.
Action	Investigate the cause of the error, paying special attention to the corresponding error messages produced by the operating system. Contact your Software AG sales or support representative for assistance.
MLC9005	Error writing license file assembler output
Explanation	An error occurred during an attempt to write the license file assembler output.
Action	Investigate the cause of the error, paying special attention to the corresponding error messages produced by the operating system. Contact your Software AG sales or support representative for assistance.

MLC9006	License converted to assembler output records written to output file
Explanation	The license file was successfully converted to an assembler source module. Output records were written to the output file.
Action	No action is required for this informational message.
MLC9007	Error loading license module {modulename} {errorcode}
Explanation	The LOADLIC function (z/OS only) tried to load a license module from the load library and received an error (<i>errorcode</i>) from the operating system.
Action	Correct the LICUTIL input, removing duplicate LICUTIL function calls. Check that the license module (<i>modulename</i>) is in the load library, that the correct library is referenced in the JCL, and that the module name is specified correctly in the LOADLIC statement (case sensitive, a blank between LOADLIC and <i>modulename</i>).
MLC9009	DMS Error
Explanation	A DMS error occurred (only in BS2000/OSD environments).
Action	Investigate the cause of the BS2000/OSD DMS error. If you need assistance, contact your Software AG support representative.
MLC9010	LOADLIC can only be issued once, before any DISPLAY, CHECK, MAKE or READ
Explanation	The LOADLIC function (z/OS only) can only be performed once per LICUTIL session. LOADLIC must not be preceded by the DISPLAY, CHECK or READ function. These functions can only locate the license module <i>after</i> the LOADLIC.
Action	Correct the LICUTIL input, removing duplicate LICUTIL function calls. Change the call order so that the LOADLIC precedes any DISPLAY, CHECK or READ.

3 Port Numbers in EntireX

- Ensuring Unique Port Numbers 28
- Port Number Configuration 28

Ensuring Unique Port Numbers

The following four port numbers must be unique for each installation of EntireX.

- **Default EntireX Broker**

- TCP/IP port
- SSL port

- **Administration**

- TCP/IP port
- SSL port

Uniqueness checks are performed during installation. If one port in a block (**Default EntireX Broker** or **Administration**) is in use, both ports in this block are recalculated. You can change these values as required.

Any new port number must be a positive integer greater than 1024. If you enter a port number that is already in use, an error message is displayed. All four ports must be assigned correctly before the installation can continue.

Port Number Configuration

In versions before 8.2, the default broker ID was "localhost", which implied "localhost:1971" (default port number). From version 8.2, however, the default port number can be changed during installation, and *must* be changed in the case of a multiple installation (see [Ensuring Unique Port Numbers](#)).

The following configuration/property files for RPC servers in directory *EntireX/config* contain a default broker ID:

- dotNetServer.cfg (Windows only)
- cserver.cfg
- microfocusserver.cfg
- exxatm.cfg
- entirex.cicseci.properties
- entirex.imsconnect.properties
- entirex.javarpserver.properties
- entirex.rpcacibridge.properties

- `entirex.wmqbridge.properties`
- `entirex.wmqbridgelistener.properties`
- `entirex.xmlrpcserver.properties`

The configuration/property files are updated automatically during installation.

"`BrokerID=localhost`" is now "`BrokerID=localhost:1971`", or if port 1988, for example, was specified during installation, "`BrokerID=localhost`" becomes "`BrokerID=localhost:1988`".

If the port numbers are changed *after* installation, you need to update the config/property files in the list above accordingly.

4 Migrating EntireX Data from Earlier Versions

- Migrating EntireX Broker Data 32
- Migrating Authorization Rules 33
- Migrating RPC Servers 33
- Migrating Web Services 34
- Migrating XML/SOAP Components 34
- Eclipse Workbench Considerations 36

This chapter describes how to migrate an earlier version of EntireX to version 9.6 under UNIX or Windows. EntireX version 9.6 can only be installed in parallel to an existing EntireX version. In this scenario you can migrate user data from one installation to the other easily, using the steps described here. The information applies to both UNIX and Windows systems; any differences are described explicitly.

 **Note:** In this chapter, *source* refers to an earlier EntireX installation, and *target* refers to the current EntireX version 9.6.

Migrating EntireX Broker Data

The broker attribute files are located at `<inst_dir>/EntireX/config/etb`. Follow the steps below to migrate broker data from one installation to the other:

▶ To migrate broker data

- 1 Stop all running EntireX brokers in both the source and target installations. EntireX brokers from other installations and platforms are not affected.
- 2 Stop all running RPC Servers that are registered to EntireX brokers in source or target installations. This also includes remote RPC servers or RPC servers from other EntireX installations if these RPC servers are registered with the brokers to be shut down.
- 3 Stop the Broker Administration Service/Daemon.

■ Under UNIX:


Stop the UNIX broker admin service, using the script

```
EntireX/bin/sagnetbsrv
```

where *n* is a number in both installations, e.g. "sag2etbsrv stop".

■ Under Windows:

From the Control Panel in both installations, choose **Administration > Services > Stop Software AG EntireX Broker Admin Service**

 **Note:** The first installation does not have a number to identify it. The second and subsequent installations are appended with (2), (3) etc.

- 4 Copy all relevant directories of defined brokers from source to target installation. These directories - one for each broker - are located under `<inst_dir>/EntireX/config/etb`.

 **Note:** Copy the complete directories, not just the attribute files.

- 5 Check the broker attribute files for path names and adapt them to the target installation.
- 6 Restart the Broker Administration Service/Daemon.

- **Under UNIX:**

Start the broker admin service for both installations, for example with command

```
sag2etbsrv start
```

- **Under Windows:**

From the Control Panel, restart the Software AG EntireX Broker Service for both installations.

Following the above steps, autostart settings and user credentials are not migrated. Apply these manually in the new installation. When you restart the Broker Administration service, all brokers will be shown. Readjust the autostart settings and user credentials, using System Management Hub.

You do not need to move Broker definitions (attribute file etc.) that are stored outside the EntireX installation directory. Simply make sure when you start a broker stored externally that the broker executable from version 9.6 is used. This may apply to your scripts or when you start a broker manually.

Migrating Authorization Rules

Authorization rules cannot be migrated and must be reentered in the new installation. You can readjust them using System Management Hub.

Migrating RPC Servers

You can migrate manually all RPC servers of the source installation that are visible in System Management Hub and maintained using System Management Hub.

- ▶ **To migrate RPC servers**

- 1 Copy the file `<inst_dir>/EntireX/config/rpc.server.properties` from source to target installation.
- 2 In this file, adapt path names that reference your source installation to your target installation.

Paths of RPC servers other than the source installation can remain unchanged.

Migrating Web Services

Please note the following when migrating Web services to a more recent version of EntireX:

- Artifacts such as XMM or AAR files can be reused without regeneration.
- Make sure Web Services Stack and EntireX are on the same level.
- Modify your scripts (for example the start script of the XML/SOAP RPC Server) so that they use the new versions of the relevant JAR files of Web Services Stack and EntireX.

Migrating XML/SOAP Components

This section applies to migrations from EntireX version 8 and above. For EntireX version 7, see *Migrating XML/SOAP Components from EntireX Version 7.n* in the XML/SOAP Wrapper documentation.

This section covers the following topics:

- [Migrating XML/SOAP RPC Server](#)
- [Migrating XML/SOAP Wrapper](#)
- [Migrating XML/SOAP Listener](#)

Migrating XML/SOAP RPC Server

Update the start script to set the paths to current installation. If the properties file contains a path to the configuration file, you may need to adjust the path. The properties and configuration files can be used as before. See *Configuration File for the XML/SOAP RPC Server* in the UNIX and Windows administration documentation for more information.

Migrating XML/SOAP Wrapper

Update the start script to set the paths to current installation.

Migrating XML/SOAP Listener

Using the Software AG Web Server based on Apache Tomcat / Software AG Runtime from Software AG Installation

Save your Web services (AAR files) and modified configuration files (i.e. *axis2.xml*). You do not need to re-generate your Web services (AAR files). If the configuration was modified, perform the same modifications for the new installation and restart Software AG Web Server. Redeploy the web services (AAR files).



Note: The new installation will use another port by default, which means that the Web clients need to be adjusted.

Using another Web Server

Save your Web services (AAR files) and modified configuration files (i.e. *axis2.xml*). You do not need to re-generate your Web services (AAR files). For deployment of file *wsstack.war* and copying file *entirex.jar* to Web Services Stack, see the separate Web Services Stack documentation, also available under webMethods Product Documentation on the [Software AG Documentation](#) website.

If configuration was modified, perform the same modifications for new installation and restart the Web server. Redeploy the Web services (AAR files).

Eclipse Workbench Considerations

EntireX Workbench is part of the Eclipse-based Software AG Designer.

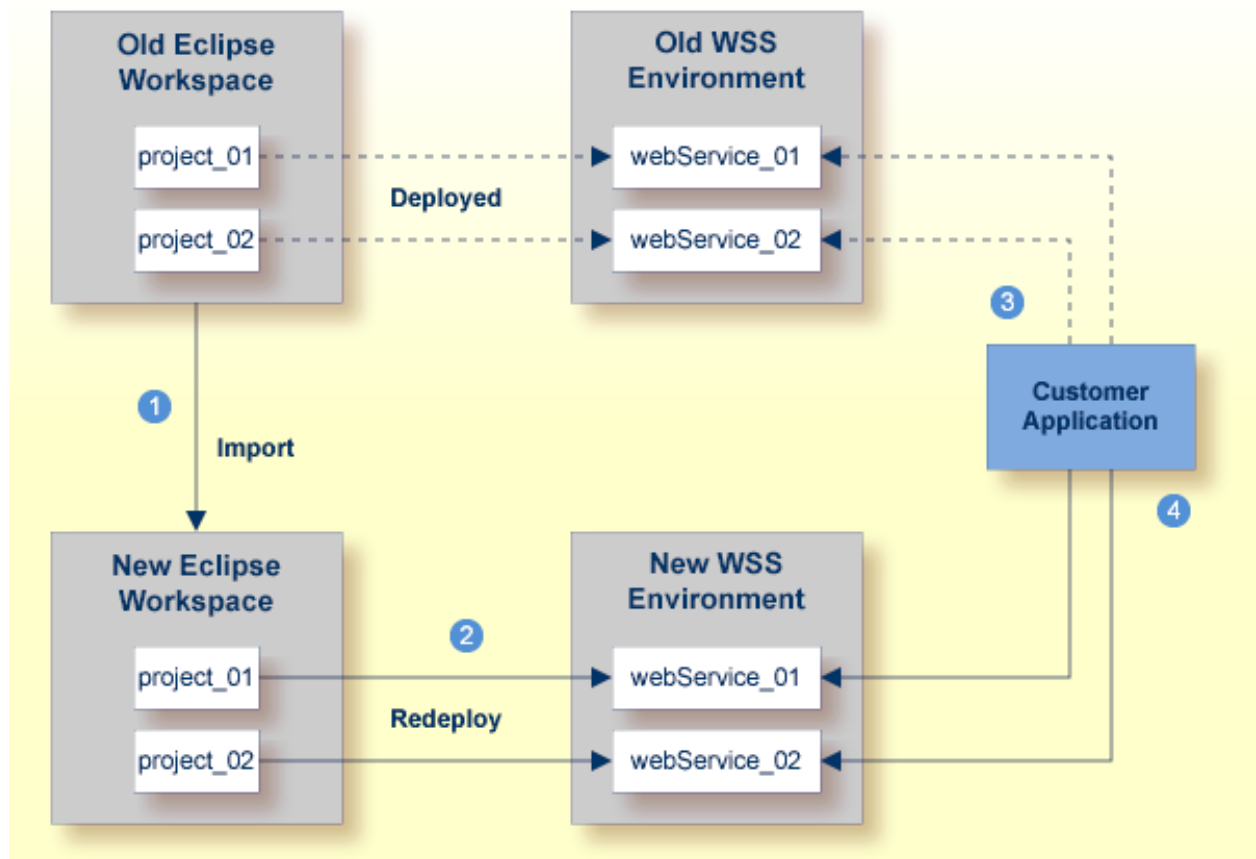
We recommend you import existing projects into a new workspace of your target installation. We do not recommend reusing an existing Eclipse workspace. This may damage data or result in strange behavior.

This section describes how to import the projects of Software AG Designer from an earlier version into the workspace of the new Software AG Designer 9.6, then redeploy the Web services to the new Web Services Stack 9.6. It covers the following topics:

- [Overview](#)
- [Migrating your Preferences \(Optional\)](#)
- [Migrating Projects to Software AG Designer 9.6.0](#)

- Redeploying Web Services

Overview



Notes:

1. We recommend importing your old Eclipse workspace when you install Software AG Designer version 9.6. See also *Migrate Designer Projects* under *Upgrading webMethods Products* on the [Software AG Product Documentation](#) website.
2. We recommend you redeploy your Web services to the new Web Services Stack environment.
3. Existing applications can continue to use web Services in an old Web Services Stack environment.
4. However, if you wish to access the redeployed web Services in the new 9.6 Web Services Stack environment, your existing applications must be modified accordingly.

Migrating your Preferences (Optional)

Before you migrate your old projects, you can optionally migrate your existing preferences to your new 9.6 installation.

▶ To migrate the preferences to the new workspace (optional)

- 1 Open Software AG Designer 9.6 and point to a new 9.6 workspace. Accept the default "workspace96" or specify another one.
- 2 Export your preferences before upgrading:
 1. Start the old version of Software AG Designer with the old workspace.
 2. Choose **File > Export...** In the **Select** panel, chose **General > Preferences** and click **Next**.
 3. In the **To preference file** field, specify the EPF (Eclipse Process Framework) file to which you want to export your preferences, then click **Finish**.
- 3 Import these preferences to the new workspace:
 1. Start Software AG Designer 9.6 with the new workspace.
 2. Choose **File > Import...** In the **Select** panel, choose **General > Preferences** and click **Next**.
 3. In the **From preference file** field, specify the EPF file to which you exported your preferences, then click **Finish**.

Migrating Projects to Software AG Designer 9.6.0

▶ To import projects into Software AG Designer 9.6

- 1 Choose **File > Import...** In the **Select** panel, choose **General > Existing Projects into Workspace** and click **Next**.
- 2 In the **Import Projects** panel, choose **Select Root Directory** and go to the old workspace. The projects appear in the **Projects** box. Select the projects to import into Software AG Designer 9.6.
- 3 Choose **Copy projects into workspace** and click **Finish**.

Redeploying Web Services

▶ To redeploy the Web services

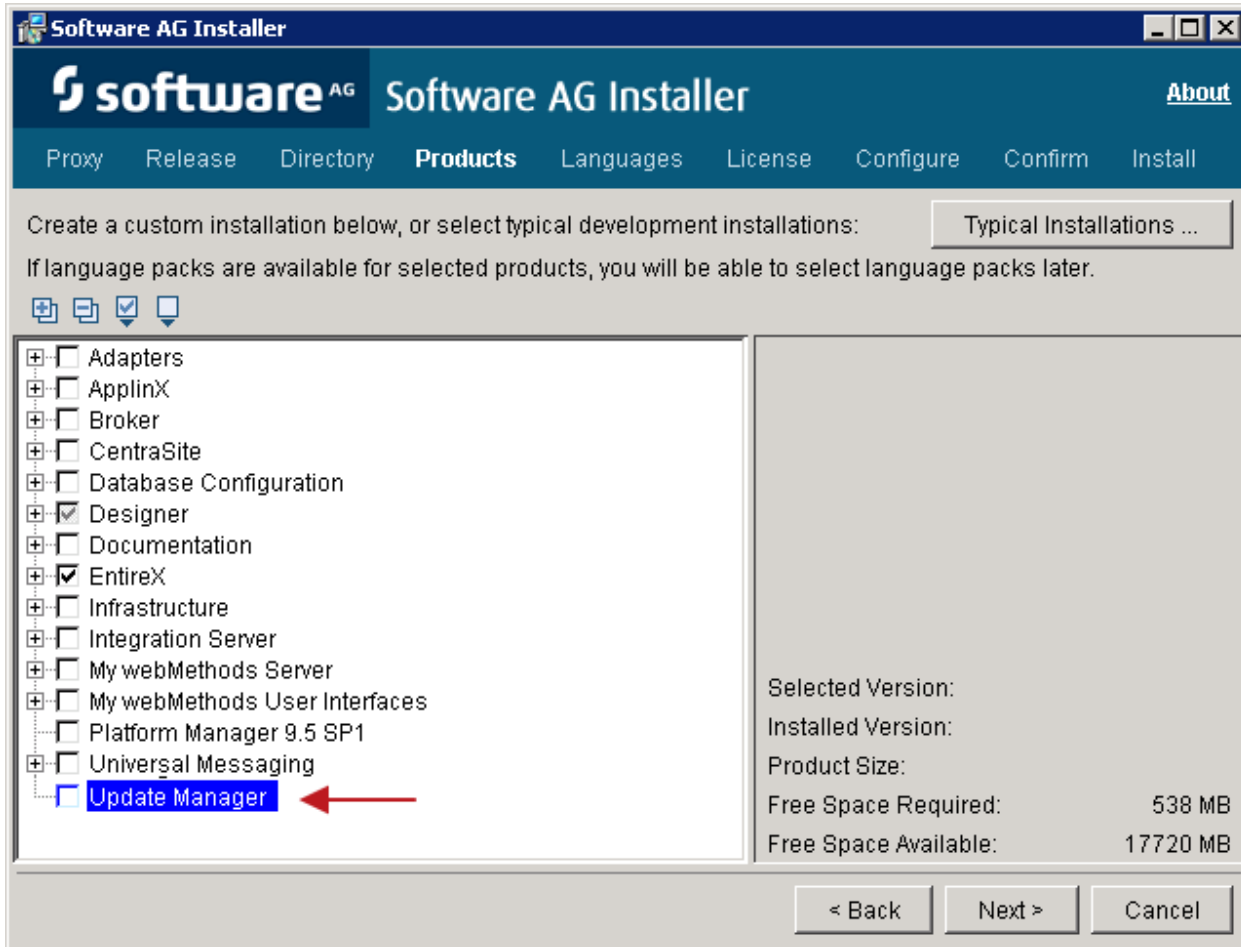
- 1 Select an AAR file and from the context menu choose **Web Services Stack > Deploy Services Package**.
- 2 Select the correct URL that points to the Web Services Stack 9.6 installation.

5 Installing Fixes from the Software AG Update Manager

- Installation Steps 42
- Verifying the Fix Version 45
- Uninstalling the Fix Version 46

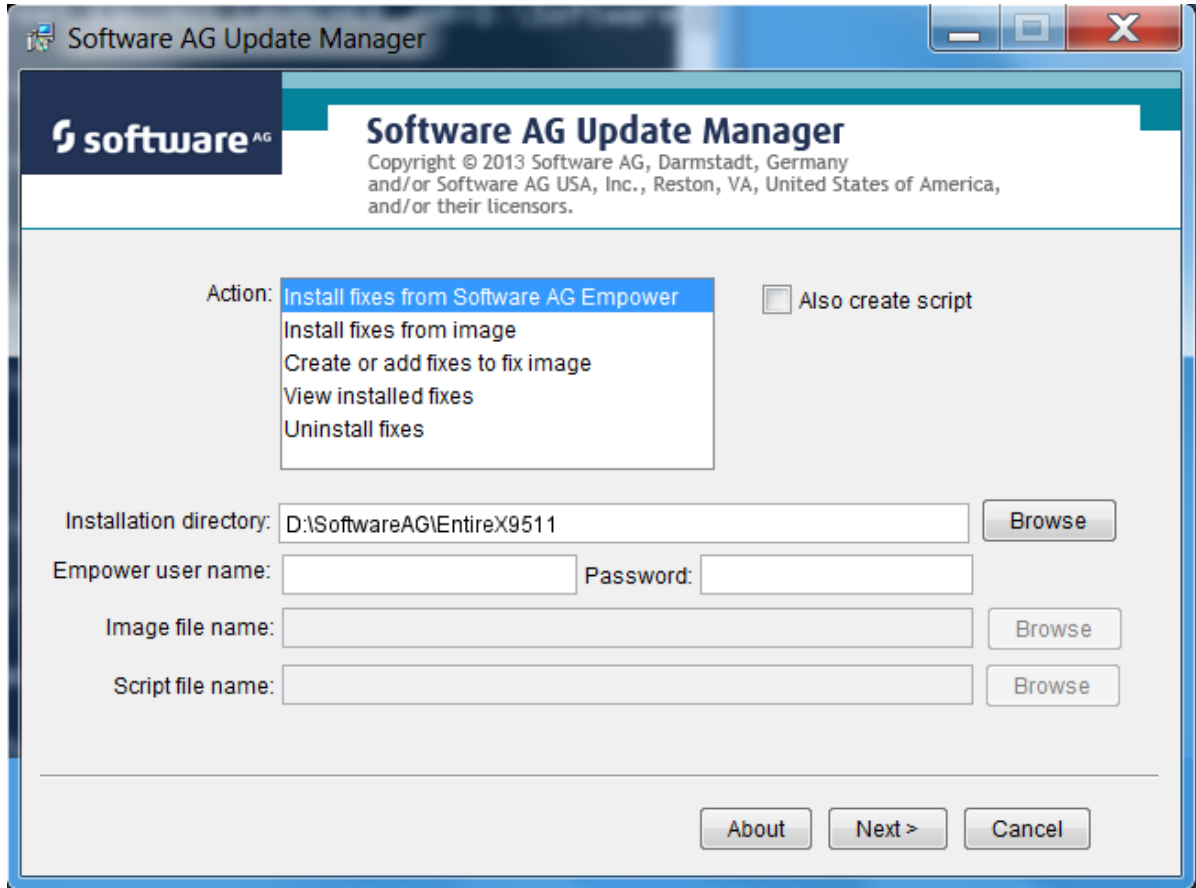
Installation Steps

To install a fix you need the Software AG Update Manager (SUM). The Software AG Update Manager is available from the Software AG Installer.



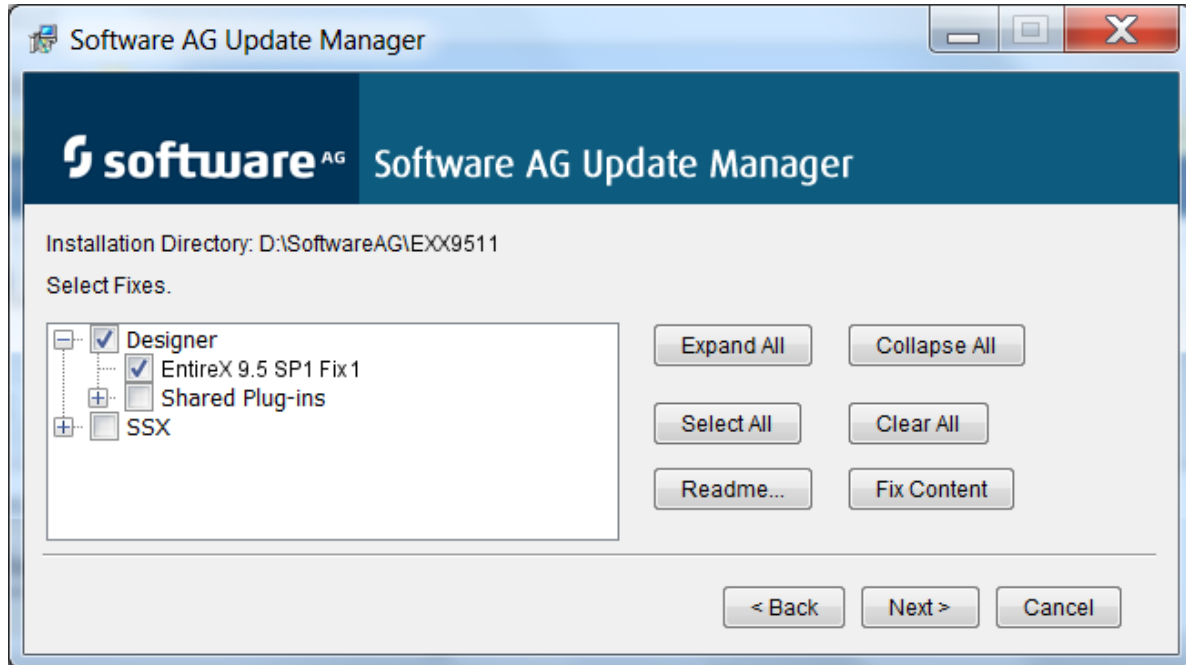
► To install a fix using the Software AG Update Manager

- 1 Start the Software AG Update Manager and choose **Install fixes from Software AG Empower**.

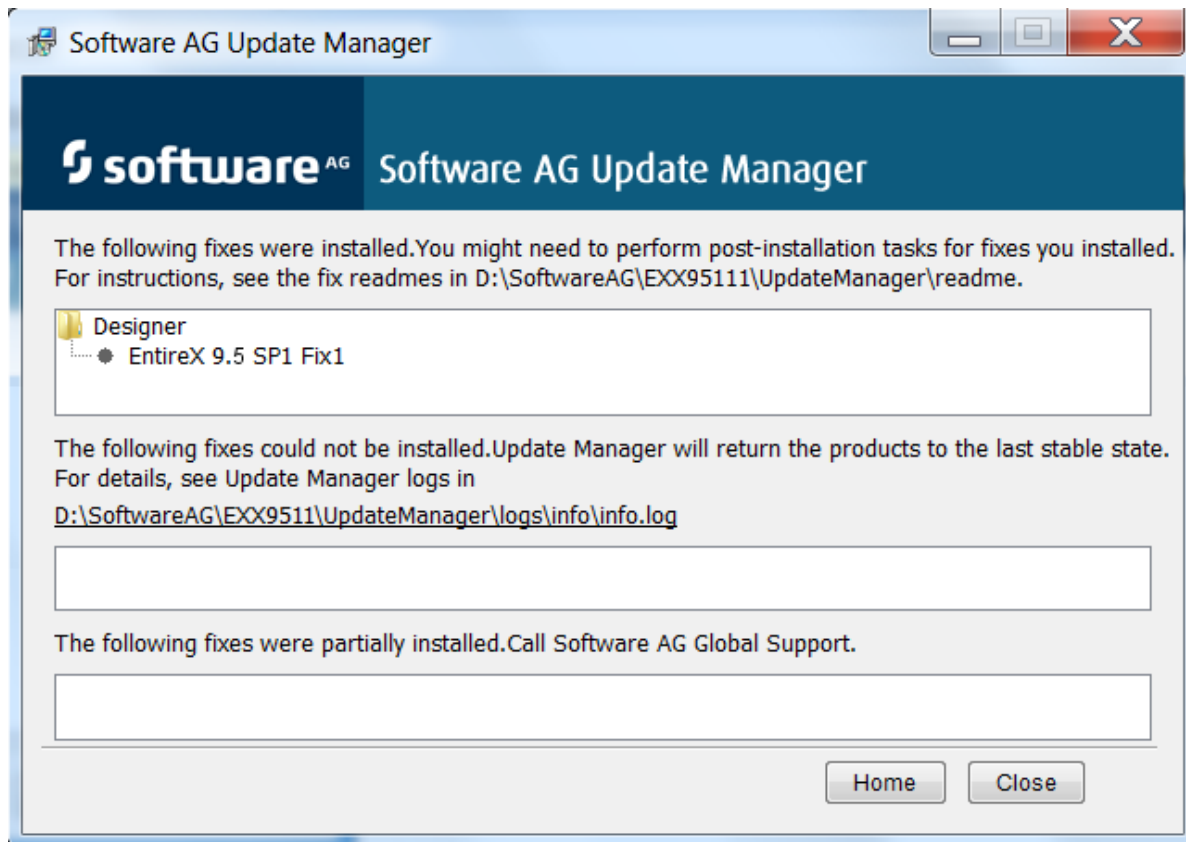


Specify the installation directory and supply your Empower credentials.

- 2 Select the fix you want to install and continue with **Next**.

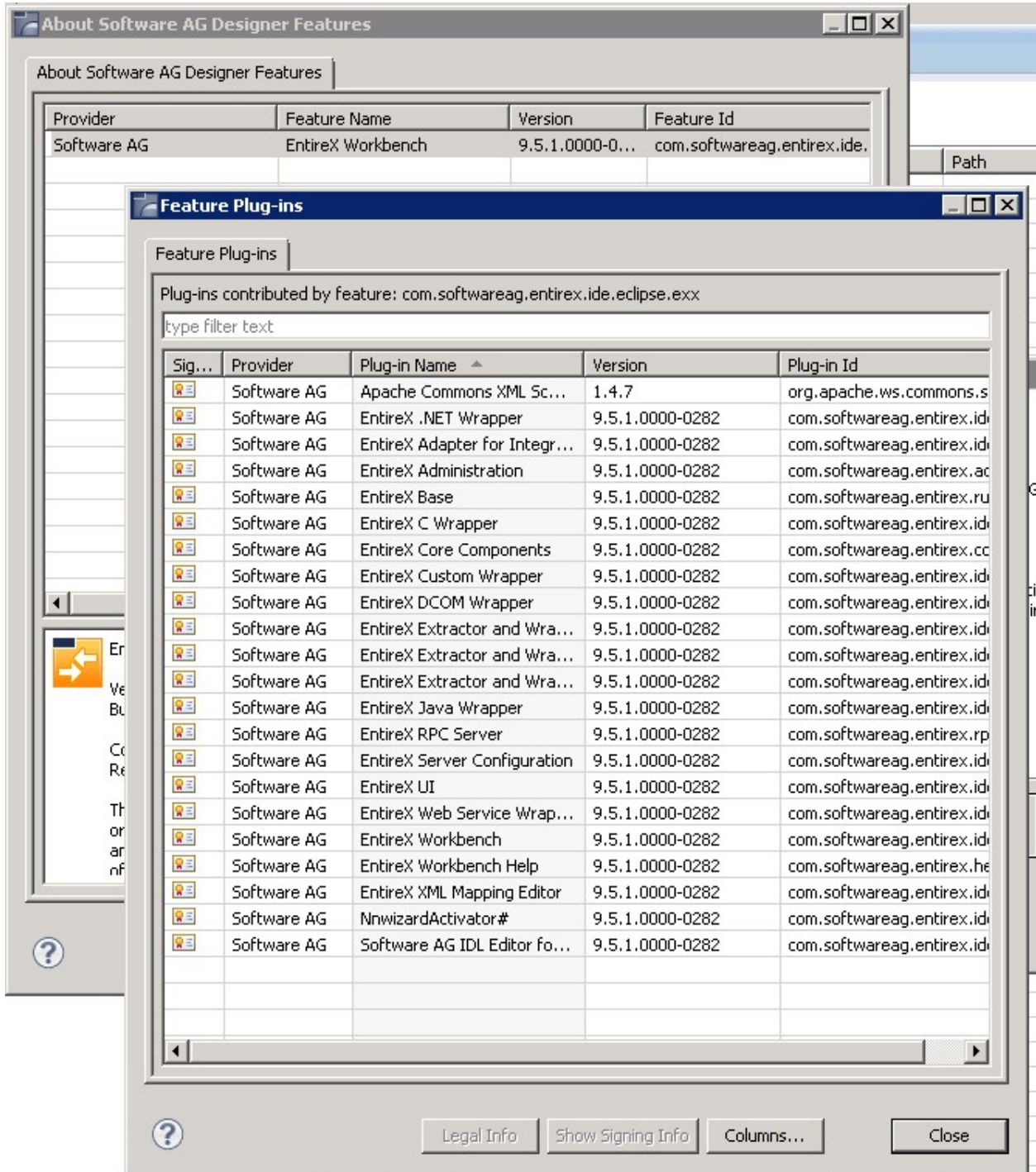


The fix is now installed.



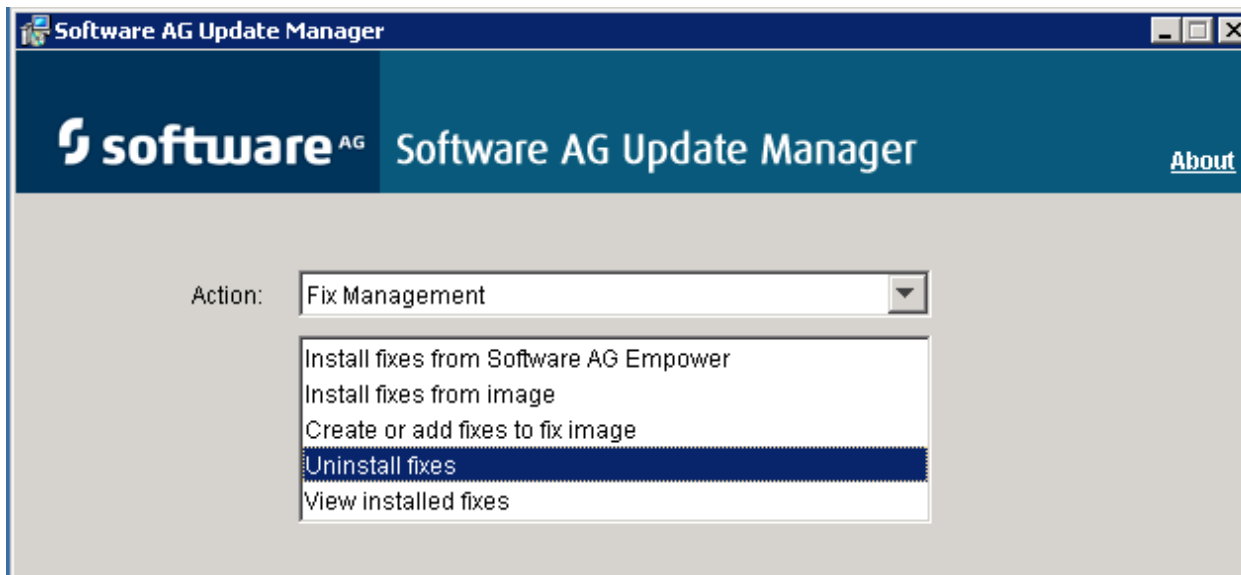
Verifying the Fix Version

After restarting the Designer server you can verify the version of the EntireX components.



Uninstalling the Fix Version

You can use the Software AG Update Manager to uninstall the fix:



6 Installing the EntireX Workbench Plug-ins in Standalone

Mode

▪ Prerequisites	48
▪ Scope	48
▪ Eclipse 4.3 Considerations	48
▪ Installation Steps	49
▪ Configuring the License	50
▪ Uninstalling the EntireX Workbench Plug-ins	51



Note: This section is applicable if you want to install the Workbench plug-ins in standalone mode, that is, not as part of the full webMethods EntireX installation.

Prerequisites

Prerequisites for all EntireX components are described centrally. See *Prerequisites* in the EntireX Release Notes.

Scope

The webMethods installation contains a folder `<suite installation folder>\eclipse\updates` with archived update sites of all the features installed. To install the *EntireX Workbench* into some Eclipse use the archived update sites:

- `eclipse.exx.UpdatePackage.zip`
- `com.softwareag.common.zip`
- `eclipse.wss.nnn.UpdatePackage.nnnn.zip`

The Eclipse features `com.softwareag.common.zip` and `com.softwareag.wsstack.ui_n.n.n.nnn` are prerequisites for installing the Workbench plug-ins in standalone mode. All features listed above can be installed in one installation step.

See *EntireX Workbench* for more information.

Eclipse 4.3 Considerations

Eclipse 4.3 Connecting to Update Site

The Eclipse Update Manager automatically checks whether updates are available for the newly installed Eclipse 4.3 during the first plug-in installation performed from the user interface.

The user will not be notified of the system access to the remote system. However, at this point no user-relevant data has been sent.

The user may be requested for user ID and password before connecting to the remote update site.

After submitting the credentials, a list of updates for the newly installed software is retrieved from the remote system.



Note: Nothing is installed without the consent of the user.

Updating the features of Eclipse may establish a connection to the Software AG Update Site, which is hosted on Empower, the Software AG customer extranet. To use this update site, an Empower customer account is needed. For internal distribution, consider setting up a mirror update site. This avoids access to the Software AG customer extranet.

Installation Steps

- [Installation in Eclipse Headless Mode](#)
- [Installation in GUI Mode](#)

Installation in Eclipse Headless Mode

For installation in Eclipse headless mode, use the following commands to install the three features:

```
eclipse --launcher.suppressErrors -nosplash -application ↵
org.eclipse.update.core.standaloneUpdate -data $WORKSPACE
  -command install -featureId com.softwareag.common -version v.r.s.hhhh-bbbb ↵
  -from /opt/softwareag/eclipse/updates/com.softwareag.common.zip
```

```
eclipse --launcher.suppressErrors -nosplash -application ↵
org.eclipse.update.core.standaloneUpdate -data $WORKSPACE
  -command install -featureId com.softwareag.wsstack.ui -version v.r.s.hhhh-bbbb ↵
  -from /opt/softwareag/eclipse/updates/eclipse.wss.vrs.UpdatePackage.nnnn.zip
```

```
eclipse --launcher.suppressErrors -nosplash -application ↵
org.eclipse.update.core.standaloneUpdate -data $WORKSPACE
  -command install -featureId com.softwareag.entirex.ide.eclipse.exx ↵
  -version v.r.s.hhhh-bbbb -from ↵
/opt/softwareag/eclipse/updates/eclipse.exx.UpdatePackage.zip
```

where *vrs* is version, release and service pack level

hhhh is the hotfix number, and

bbbb is the build number

This is recommended for all UNIX platforms that are not Linux.

Installation in GUI Mode

Follow the instruction in the Eclipse Help. It can be found inside Eclipse at **Help > Help Contents > Workbench User Guide > Tasks > Updating and installing software** or on the Web at <http://help.eclipse.org/kepler/topic/org.eclipse.platform.doc.user/tasks/tasks-129.htm>.

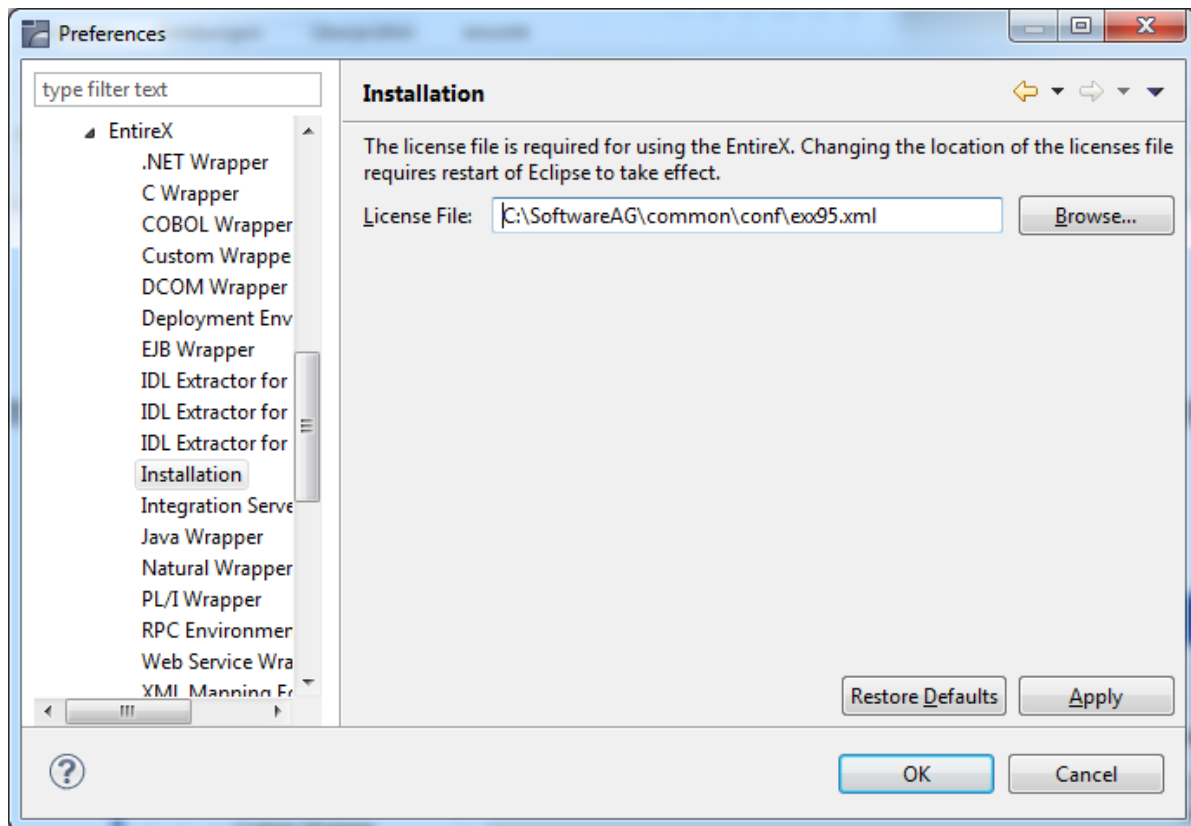
Install the three features listed above. You can use drag-and-drop to add the three archived update sites from the folder `<suite installation folder>\eclipse\updates` to the list of update sites to visit.

Configuring the License

Before you can use the views and the editor of the plug-in, EntireX Workbench needs a license. The default license file name is `exx96.xml`. The EntireX Workbench checks the folder `<webMethods Installation Directory>\common\conf` for the license file. If the license file is not found, you have to configure it manually. Follow the steps below:

▶ To configure the license

- Choose **Window > Preferences > Software AG > EntireX > Installation** and set the location of the license file.



Or:

Set the license file location when you use one of the views, the IDL Editor, an extractor, or a wrapper. A dialog asks for this location on the first use.

The location of the license file must be set for each Eclipse installation you use.

Uninstalling the EntireX Workbench Plug-ins

Uninstalling the EntireX Workbench plug-ins is done by using the Uninstall wizard. Usage is described at **Help > Help Contents > Workbench User Guide > Tasks > Updating and installing software** or on the Web at <http://help.eclipse.org/kepler/topic/org.eclipse.platform.doc.user/tasks/tasks-129.htm>.

