

ApplinX User Guide

Administration

Version 9.5 SP1

November 2013

This document applies to ApplinX Version 9.5 SP1.

Specifications contained herein are subject to change and these changes will be reported in subsequent release notes or new editions.

Copyright © 2001-2013 Software AG, Darmstadt, Germany and/or Software AG USA, Inc., Reston, VA, United States of America, and/or their licensors.

The name Software AG, webMethods and all Software AG product names are either trademarks or registered trademarks of Software AG and/or Software AG USA, Inc. and/or their licensors. Other company and product names mentioned herein may be trademarks of their respective owners.

Detailed information on trademarks and patents owned by Software AG and/or its subsidiaries is located at <http://documentation.softwareag.com/legal/>.

Use of this software is subject to adherence to Software AG's licensing conditions and terms. These terms are part of the product documentation, located at <http://documentation.softwareag.com/legal/> and/or in the root installation directory of the licensed product(s).

This software may include portions of third-party products. For third-party copyright notices and license terms, please refer to "License Texts, Copyright Notices and Disclaimers of Third-Party Products". This document is part of the product documentation, located at <http://documentation.softwareag.com/legal/> and/or in the root installation directory of the licensed product(s).

Document ID: APX-UG-ADMIN-95SP1-20130929

Table of Contents

1	Managing the ApplinX Server	1
	Starting ApplinX Server	2
	ApplinX Server System Parameters	3
	Stopping ApplinX Server	4
	Connecting to the Server	4
	Configuring the Server	5
	Accessing Server Information	8
	Viewing Server Logs	10
2	Current Activity	13
	Managing Sessions	14
	Managing Connection Pools	17
3	Users: Roles and Permissions	27
	Multiple Developers Working on the same Application	28
	New User Properties	29
	Defining User Permissions	30
	Defining Passwords	30
	Disabling a User's Account	31
	Adding a New Group	31
4	Administrative Web Services API	33
	Retrieving Server Information	34
	Retrieving Session Information	36
	Managing Connection Pools	39
	Managing Connection Pools Connection Information Sets	48
	Managing RPC Connection Pools	52
5	Batch Automation Utilities	55
	Migration Batch File	56
	Convert Utility Batch File	56
	Importing Screens using a Batch File	57
	Export Batch File	58
	Import Batch File	60
	Extracting Activities from Trace Files	62

1 Managing the ApplinX Server

▪ Starting ApplinX Server	2
▪ ApplinX Server System Parameters	3
▪ Stopping ApplinX Server	4
▪ Connecting to the Server	4
▪ Configuring the Server	5
▪ Accessing Server Information	8
▪ Viewing Server Logs	10

Starting ApplinX Server

Windows Environment

The ApplinX server can be started either as a Windows service or using a batch file.



Note: When selecting to run ApplinX as a service it will by default, start automatically when Windows is started.

▶ To start the ApplinX server as a Windows system service

- 1 In the installation process, define that ApplinX server will run as a Windows system service.
- 2 Select **Start>Settings>Control Panel>Administrative Tools>Services**.
- 3 Start the Software AG ApplinX Server service.

▶ To start the ApplinX server using a batch command file

- 1 Access the <ApplinX installation>/bin folder.
- 2 Double-click *startup.bat*.

It is possible to configure the server's system properties.

Refer to [ApplinX Server, System Parameters](#) for further details.

UNIX Environment

▶ To start the ApplinX server

- In the ApplinX installation directory, start the server using the *startup.sh* shell command.

It is possible to configure the server's system properties.

Refer to [ApplinX Server, System Parameters](#) for further details.

ApplinX Server System Parameters

When running ApplinX server as a batch file, these parameters can be configured in the *startup.bat* batch file/*GXApplinXService.ini/startup.sh*.

Parameter	Description
com.sabratec.gxhome	The location of the applinx_home directory.
com.sabratec.license	The directory of the license file.
com.sabratec.useicon	Put the server icon in the icon tray.
com.sabratec.conf	ApplinX configuration file name - under the config folder of the installation.
com.sabratec.prpfile	The location of gxstartup.prp.
com.sabratec.logger	Servlet logger.
com.softwareag.applinx.ndt.endians_switch	When using Natural UNIX natural data transfer, if the download or upload gets stuck, this may be due to Endian issues and setting this parameter to true may fix this (by default this parameter is false).

The following parameters provide you with the ability to determine the server's system properties. Define these properties in the `\config\gxstartup.prp` file. These parameters can be overridden by parameters defined in the *startup.bat* batch file/*GXApplinXService.ini/startup.sh* files.

Parameter	Description
com.sabratec.license	The directory of the license file.
com.sabratec.useicon	Put the server icon in the icon tray.
com.sabratec.conf	ApplinX configuration file name - under the config folder of the installation.
com.sabratec.logger	Servlet logger.

Stopping ApplinX Server

Windows Environment

▶ **To stop the ApplinX server, when started as a Windows system service**

- 1 Select **Start>Settings>Control Panel>Administrative Tools>Services**.
- 2 Stop the Software AG ApplinX Server service.

▶ **To stop the ApplinX server using a batch command file**

- 1 Access the ApplinX installation folder.
- 2 Double-click *shutdown.bat*.

UNIX Environment

▶ **To stop the ApplinX server**

- In the ApplinX installation directory, you will find the *shutdown.sh* shell command.

Connecting to the Server

▶ **To connect to the server**

- 1 In the ApplinX Designer, click **Connect to Server** on the toolbar, or right-click on the relevant server and select **Connect**.
- 2 When connecting for the first time, ensure that the server address (IPv4 and IPv6 address formats are supported) and port that are displayed in the pop-up are correct.
- 3 Click **OK**.
- 4 Type the **User name** and **Password** and click **OK**.

▶ **To disconnect from the server**

- In the ApplinX Designer, click **Disconnect from Server** on the toolbar, or right-click on the relevant server and select **Connect**.

The communication with the server terminates, and the user's details disappear.

Configuring the Server

To update a Server's configuration, open ApplinX Designer, and either right-click on the server (in the ApplinX Explorer) and select **Properties**, or select **Properties** from the **Server** menu.

The *Server Properties* dialog box is displayed.

Edit the dialog box as follows:

- CentraSite
- General
- License
- Log
- Outgoing SMTP Server
- WS-Stack

CentraSite

Enable CentraSite

Selecting this option enables connecting to CentraSite. This is available only when you have a relevant license and have installed the required Software AG common files. An error message will indicate when one of these are missing. If the common files are not installed, run the Software AG Installer and within "Infrastructure>Libraries" select to install "Shared Libraries" and "CentraSite Libraries".

Host

The name of the host where CentraSite is installed.

Port

The port number used to connect to CentraSite

User

Current user name.

Password

Password of current user.

Test Connection

Clicking on this button will test that a connection with CentraSite has been established.

General

Non secured port

Does not require user name and password authentication.

Secured port

The **Secured port** check box determines whether SSL is used to securely transfer the data between the client and ApplinX server.

To change the HTTP port, edit the server.xml and gxconfig.xml files.

Load ApplinX archive applications (gxar)

This check box determines whether to automatically update the application with new/updated gxar files. Once selected, ApplinX searches the host-applications folder looking for new/updated gxar files. When one is found, it is loaded automatically as a new/updated application. You must determine how often to search the folder (by default this is set as one minute).

Enable encryption of recorded sessions

Selecting this checkbox, enables encrypting recorded sessions.

Encryption key file

The encryption key enables ApplinX to encrypt and decrypt the recorded sessions. A key is required for each ApplinX server.



Note: Refer to Recording Sessions for further details regarding encrypting recorded sessions.

License

This page provides information regarding the ApplinX Server license. It includes the number of users, the number of licenses for each type of license, the expiry date, the platforms and the special license terms (such as whether the license includes Web Enablement and/or SOA and/or BPD (Screen Process Extractor)). Refer to the License Key Concept.

Log

The server log can be accessed from ApplinX Administrator or from the ApplinX Designer. Refer to [Viewing Server Logs](#) for further details.

Level

The contents of the log file are as detailed as this property defines, where every level includes the levels above it. For example, the Debug level also logs Normal, Warnings and Errors Only levels. Available values: "Errors only", "Warnings", "Normal" and "Debug" (by default Normal is selected).

Log File Name

The log is written to this file.

Open log folder

Enables you to see the list of existing log files.

Max. file size

Starts a new log file after the current file has been filled to the maximum file size.

Save History

Selecting this check box determines whether backups of old log files will be saved, after restarting the server.

The radio button options determine the number of backups saved before overwriting the old log files. For example: 10 means “save the last 10 log files, in addition to the current one, then start to overwrite”. When selecting **All Files**, old log files are never deleted. Default value is “10”.

Outgoing SMTP Server**Server Address**

The IP address of the SMTP server.

From address

Mail sent as part of a Procedure, requires using a From address, which is defined in the procedure. When the From field in the procedure is left empty, the address defined here, in the **Default From address**, will be used.

Requires authentication

For security reasons, you may want to require authentication. Enter the **Account name** and **Password**.



Note: Only an Administrator is able to change the server’s configuration.

WS-Stack

Enables selecting whether to work in embedded (default) or in external mode. Use the Embedded mode when WS-Stack uses the same Tomcat as ApplinX and also when working with Web Services created in previous ApplinX versions (Administrative Web Services and Procedure Group generated Web Services). Use the External mode when not using the same Tomcat as ApplinX, for example when working with one WS-Stack Web application for all SAG products or when working with a WS-Stack Web application which is on a different machine.

When connecting to a WS-Stack installation on a different machine, you are required to enter the following:

Host/IP

The host name or IP Address (IPv4 and IPv6 address formats are supported).

Port

The Tomcat port where WS-Stack Web application is deployed.

Servlet name

The URL of the servlet that the WS-Stack uses for deployment tasks.

User

The user name used by WS-Stack.

Password

The password used by WS-Stack.

Click **Test Connection**, to test the connection to the remote machine.

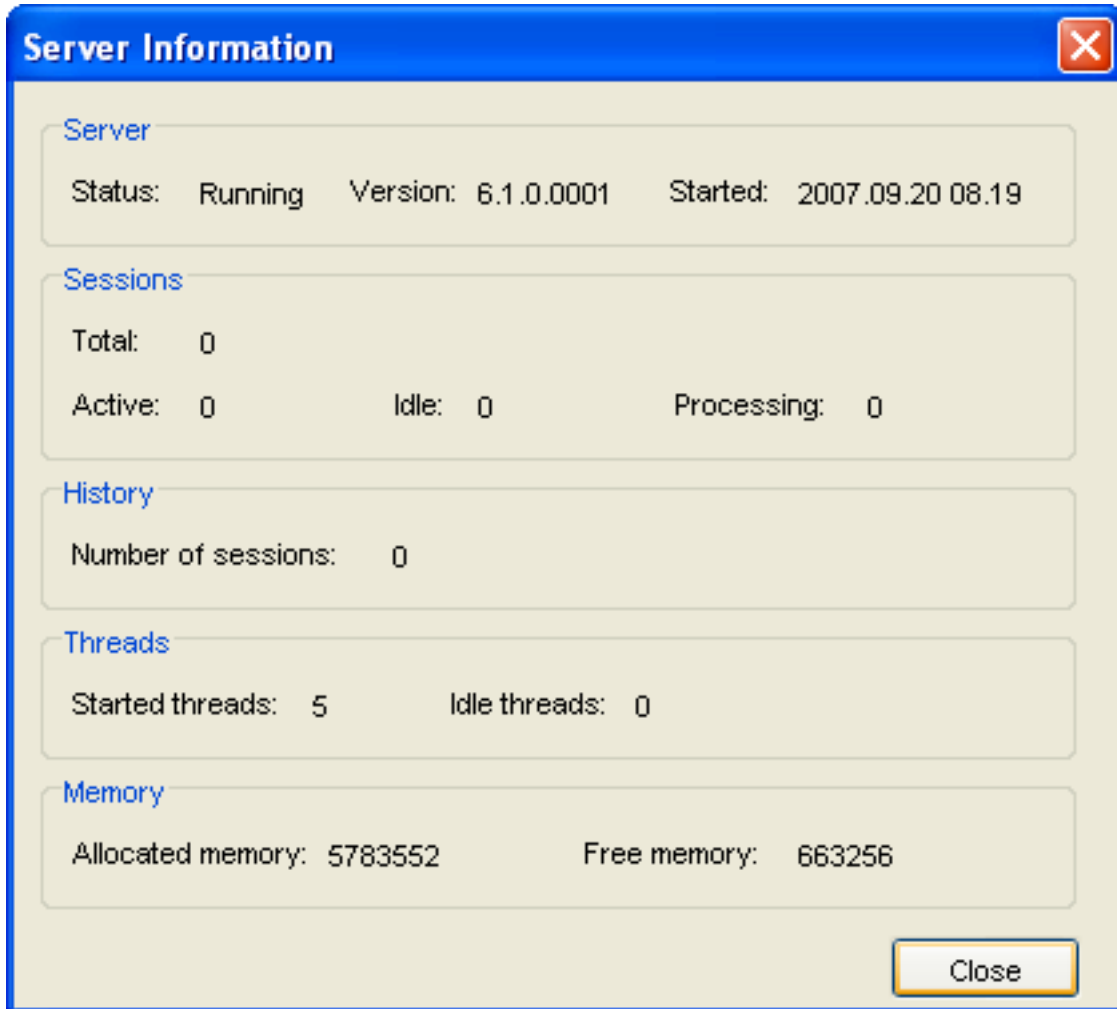
Refer to Integration between ApplinX and WS-Stack

Accessing Server Information

This feature provides important information required for monitoring the server's status and activity history.

▶ **To access the Server's status and activity history**

- 1 In the ApplinX Administrator, click **Server Information** on the toolbar, or from the **Tools** menu, select **Server Information**.
- 2 Click **Close** to exit the *Server Information* dialog box.

**Server****Server Status**

"Running" when the server is connected.

Version

The ApplinX server's version.

Started

The date and time the server was last initialized.

Sessions**Total**

The total number of sessions connected to the server presently.

Active

The number of currently active sessions.

Idle

The number of sessions currently idle (connected, but detached).

Processing

The number of sessions currently processing XML requests.

History

Number of Sessions

The total number of sessions that have connected to the server since it was last initialized.

Threads

Started Threads

The number of threads that were activated.

Idle Threads

How many threads were activated, but are currently not used.

Memory

Allocated Memory

The total amount of memory (in bytes) that is currently allocated to ApplinX server on the Java Virtual Machine.

Free Memory

The amount of memory (in bytes) currently available for ApplinX to use.

This information can be accessed using the API detailed in Retrieving Server Information.

Viewing Server Logs

The Server Log includes information as to the Server's activities and problems. The contents of the server log file are defined according to the settings configured in the Server Parameter>Log node. The Server Log can be accessed either from ApplinX Administrator, from ApplinX Designer or via an external browser: ApplinX Administrator can be used by administrators and/or developers. Administrators who do not have ApplinX Designer can access the Server Log from the Designer. Administrators who do not have ApplinX Designer or ApplinX Administrator can access the Server Log via an external browser.

► **To View the contents of server log files from within ApplinX Administrator**

- 1 In the ApplinX Administrator, click **Server Log** on the toolbar to view the current log file's contents. To view previous log file history: click the **Server Logs** node under the Management node. The paths of these log files; according to the Server definitions (see [Server Configuration](#)) appear in the Main view.

- 2 Double-click a file's name. A dialog box with the file's contents appears.
- 3 Click **Refresh**, or press the **F5** key on the keyboard to renew information on the log file manually. Check **Auto refresh** to automatically refresh the log file.
- 4 Click **OK** to exit the *Log File* window.

▶ **To View the contents of server log files from within ApplinX Designer**

- 1 In the ApplinX Designer, either right-click on a server and select **Show Server Log**, or select **Show Server Log** in the **Server** Menu.
- 2 To view previous log file history select the relevant file from the list of files in the File name field.
- 3 Double-click a file's name. A dialog box with the file's contents appears.
- 4 Click **Refresh**, or press the **F5** key on the keyboard to renew information on the log file manually.
- 5 Click **Restart Log** to restart the log. The previous data is saved to a file, and a new file is created.

2 Current Activity

- Managing Sessions 14
- Managing Connection Pools 17

Managing Sessions

- [Viewing Sessions](#)
- [Viewing a Session's Properties](#)
- [Setting the Refresh Rate](#)
- [Accessing the Session Viewer](#)
- [Canceling a Session](#)

Viewing Sessions

When you connect to the server, you are able to see in the Administrator details of all the sessions currently running on the server. To view the sessions on the server, open ApplinX Administrator and expand the **Management>Current Activity>Sessions** node. The Main view pane on the right will display the session's details:

Session ID

The ID of the session.

Example Value

U0000001

Description

The session's description, for example, User ID on the host or IP address.

Application

The name of the application the session relates to.

Example Value

CompositeDemo

Device Name

Workstation ID/LU Name, available only in certain protocols.

Duration

The amount of time the session has been in its current state.

Example Value

14:30

State

Current status of the service. Can be "Not Started", "Initializing", "Active", "In standby", "Suspended", "Stopping" or "Stopped".

Example Value

Active

Connection Pool

The name of the connection pool.

Example Value

/<connection pool name>

Type

The type of session currently running: Web Enablement, SOA, or Development session (Designer)

The status bar shows the total number of sessions currently running, and in parenthesis, the number of active sessions.

Viewing a Session's Properties

To view a specific session's properties, open ApplinX Administrator, right-click the specific session in the Main view and select **Open**. The *Session* dialog box appears including the following information:

Session**ID**

The session's ID on the ApplinX server.

Address

The IP address from where the session is connected to ApplinX.

Description

The session's description. For example, this may be the session's computer address.

Host**Address**

The IP address of the host.

Device name

Workstation ID/LU name, available only in certain protocols.

Application

The name of the application on ApplinX server to which this session is connected.

Replay

The GCT file name that is to work with this session and the screen number in the GCT file.

Trace

The name of the trace file that is tracing the current session.

Bytes sent

The number of bytes sent to the host.

Bytes received

The number of bytes received from the host.

Status

Idle time

The time period in which a session has not performed a communication activity with the host.

Number of calls

The number of communication activities the session has made with the host.

State

The current communication status between ApplinX server and the host. Can be either: "Idle" (connected, not attached), "Initializing", "Processing" (executing an action), "Active" (attached), or "Disconnecting".

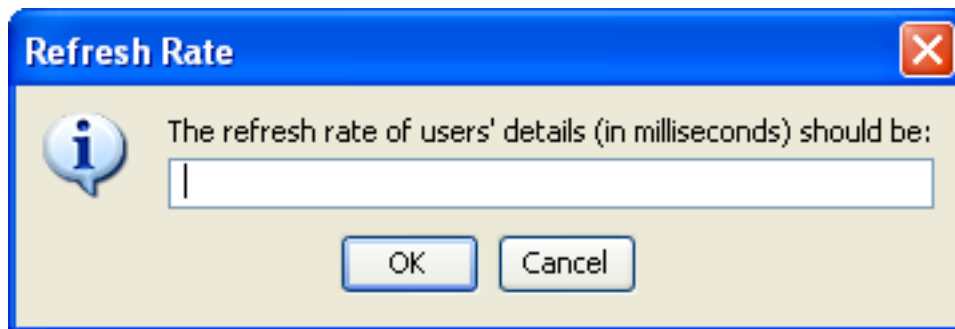
Setting the Refresh Rate

By default, the session list is sampled every second in order to keep it updated. When many users connect to the server, this refresh rate can significantly slow down the list's update. You can change the system's refresh rate to suit your needs.

▶ To set the Refresh Rate

- 1 Open ApplinX Administrator.

Right-click on the Management>Current Activity>Sessions node and select Refresh Rate. The Refresh Rate dialog box appears.



- 2 Type the new **Refresh Rate** in milliseconds, click **OK**.

The Refresh Rate is changed, and you may read all updated data from the server in the desired frequency.

Accessing the Session Viewer

This feature allows you to view the current host session while you are in the Administrator. The benefits of this feature are that it allows you to view the current host screen at the same time as other users are viewing the same host screen. If you are experiencing problems in code, the *Session Viewer* allows you to view the current host screen.

To access the *Session Viewer*, open ApplinX Administrator and select the relevant session in the Main View, then either right-click on the session and select **Show Session** or select **Show Session** in the **Connection** menu.

Canceling a Session

Using the Administrator, you can cancel a session from the server. This is useful when:

- A session is “stuck” and is unable to perform any activity.
- An unauthorized session has logged on.
- A session remains idle for a long time, and a “non-activity” timeout has not been defined.

▶ To cancel a session on the server

- 1 Open ApplinX Administrator.
- 2 Select the relevant session in the Main View, then either right-click on the session and select **Cancel Session** or select **Cancel Session** in the **Connection** menu.
- 3 Click **Yes** in the *Cancel Session* dialog box appears.

Managing Connection Pools

- [Viewing Application Connection Pools](#)
- [Viewing Connection Pool Monitoring Information](#)
- [Viewing Connection Information](#)
- [Canceling a Connection](#)
- [Changing the Status of a Connection Pool](#)
- [Viewing Connection Monitoring Information](#)



Note: Refer to the Administrative Web Services API to access connection pool information using the API.

Viewing Application Connection Pools

To view a list of all Pools whose applications are loaded open ApplinX Administrator and select the **Management>Current Activity>Connection Pools** node.

Application/Connection Pool

The name of the application followed by the full name of the Connection Pool.

Example Value

Demo:/folderA /ConnectionPoolName

Status

Current status of the connection pool:

"Not Started" - The connection pool was not initialized yet. If a user requests a connection the connection pool will return an immediate error.

"Initializing" - The connection pool is trying to reach Active status, but does not have any ready connection yet. If a user requests a connection the connection pool will return an immediate error.

"Active" - The connection pool is working, and managed to create at least one connection to the host.

"In standby" - The connection pool had several consecutive errors trying to create new connections to the host. The connection pool will continue to try to connect if user requests arrive, but will not initiate new connections otherwise. If a new connection is successfully created, the status will automatically change to Active.

"Suspended" - The connection pool is blocked for new users, and does not maintain its connections. If a user requests a connection the connection pool will return an immediate error.

"Stopping" - The connection pool is trying to reach Stopped status, but still has connections in different stages of termination. When all connections are down, the status will automatically change to Stopped. If a user requests a connection the connection pool will return an immediate error.

"Stopped" - The connection pool does not have connections or maintenance. If a user requests a connection the connection pool will return an immediate error.

Active

The number of connections in use (with users attached).

Example Value

10

Ready

The number of available connections.

Example Value

5

Process

The number of connections currently in one of the following states: initializing, recycling or keep-alive.

Example Value

1

Viewing Connection Pool Monitoring Information

To view the run time information about a specific connection pool, open ApplinX Administrator and select the **Management>Current Activity>Connection Pools** node and then either double-click the required connection pool in the Main view area or right-click the required connection pool either in the ApplinX Explorer or in the Main view section and select **Show Monitor**.

Connection pool Information (InstantDemoEdit:/gotoLogon)

Service

Name: gotoLogon Folder: /

Application: InstantDemoEdit

Current State

Status: Not Started Since: 11/08/2008 18:43:16

Connections: 0 Broken: 0

Active: 0 Initialize: 0

Ready: 0 Recycle: 0

Keep-alive: 0 Terminate: 0

History

Connections watermark: 0 Sessions watermark: 0

% of waiting sessions: 0 Average wait time: 0

Sessions served: 0 Connections used: 0 Ratio: 0.0

Connection Information

Close

Service

This panel displays identifying information about the displayed connection pool.

Name

The name of the displayed connection pool.

Folder

The folder in which the displayed host connection service is placed.

Application

The application to which the connection pool belongs.

Current State

This panel displays run time information about the displayed connection pool.

Status

The connection pool's status: "Not Started, Initializing, Active, In standby, Suspended, Stopping" or "Stopped".

Since

The connection pool is in its current status since this time.

Connections

The total number of connections in the connection pool, ignoring broken connections.

Broken

The number of connections that failed initialization recently. When more than 0, this number is shown in red.

Active

The number of connections currently held by a session (user).

Ready

The number of connections ready for use.

Keep-Alive

The number of connections currently performing keep-alive activity.

Initialize

The number of connections currently performing initialization activity.

Recycle

The number of connections currently performing recycling activity.

Terminate

The number of connections currently performing termination activity.

History

This panel displays accumulative information about the displayed connection pool. The information in this panel is reset when the connection pool is stopped.

Connections watermark

The maximum number of concurrent connections in this connection pool.

Sessions watermark

The maximum number of sessions that used this connection pool concurrently.

% of waiting sessions

The percent of sessions that did not immediately get a connection when trying to connect to ApplinX.

Average wait time

The average time (in milliseconds) sessions waited for a READY connection (calculated only among those sessions that waited) multiplied by the percentage of waiting sessions. For example: if 8% sessions had to wait, and in average each of those waited 1000 milliseconds, the overall average wait time was: $0.08 * 1000 = 80$ milliseconds.

Sessions served

The total number of sessions that connected to the host service since the service started.

Connections used

The total number of different host connections created by this connection pool.

Ratio

Sessions served divided by **Connections used**. This parameter can give a general indication of how much connection recycling is effective. A large ratio means that a relatively small number of connections served a large number of sessions.

Connection Information

This panel displays the name of the **Information Set** that the displayed host service uses. If this panel is empty, no Information set is used.

Information set

The name of the information set used by this connection pool.

Viewing Connection Information

To view a list of all the connections of a particular connection pool, open ApplinX Administrator and select the **Management>Current Activity>Connection Pools** node and in the ApplinX Explorer area select the required connection pool.

Connection ID

The connection identification number (unique in the contexts of this connection pool)

Example Value

6

Status

Current status of the connection. Can be "Active", "Ready", "Initializing", "Keep-alive", "Recycle" or "Terminating".

Example Value

Active

Session ID

This column is relevant only for active connections. The Session ID of the user that holds this connection.

Example Value

U0000014

Time

The time that passed since the connection is in its current status.

Example Value

00:03:24

Error Message

Relevant only for broken connections. A message that may imply on the reason this connection became corrupt.

Canceling a Connection

To cancel a connection, open ApplinX Administrator and expand the **Management>Current Activity>Connection Pools** node. Right-click on a connection and select **Cancel**.



Note: Active connections can also be cancelled by canceling their user through the Sessions node.

Changing the Status of a Connection Pool

To modify the activity status of a connection pool, open ApplinX Administrator and expand the **Management>Current Activity>Connection Pools** node. Select one or more connections you want to control, right-click and select one of the options detailed below:

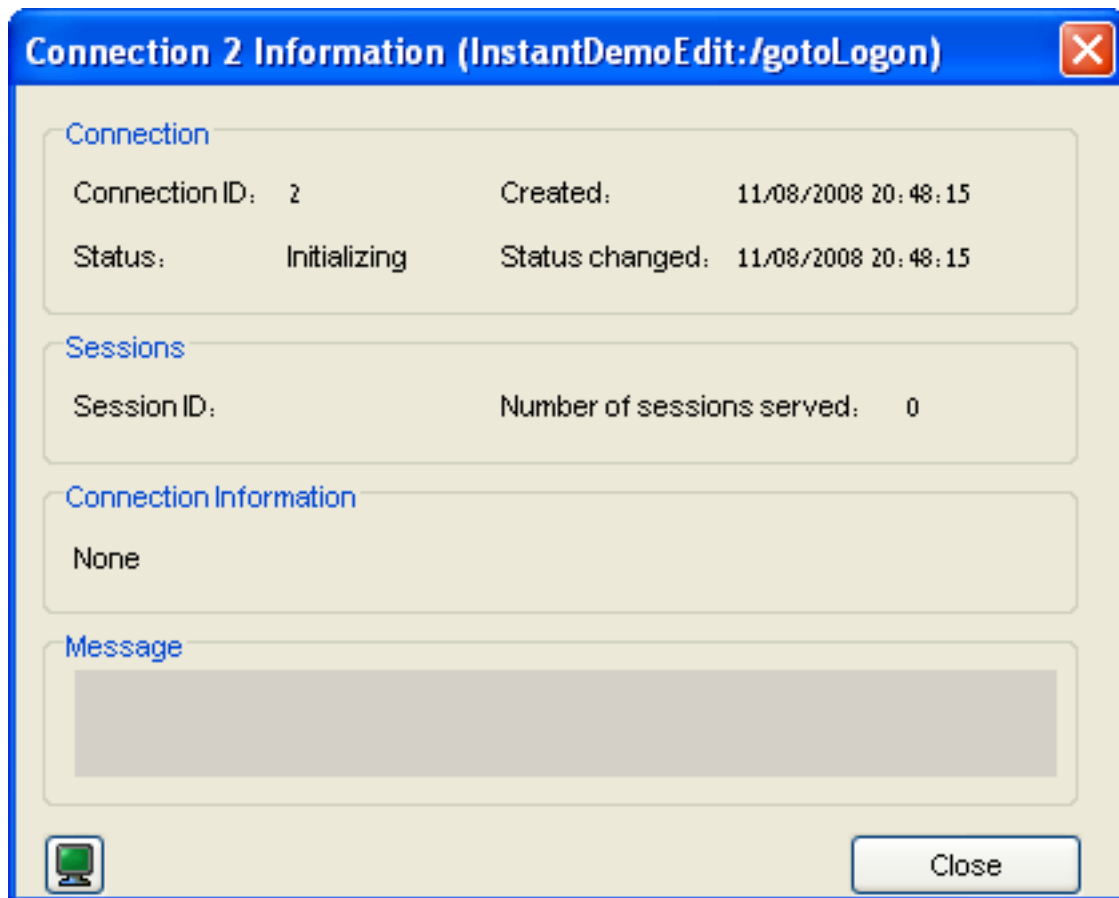


Note: The available options will vary according to the current status of the selected connection pool(s).

Name	Description
Start Connection Pool	A connection pool that has not been started or a stopped connection pool will reload its configuration, initialize a new pool and start the connection pool operation. During the activation of the pool, until at least one connection is ready, the connection pool is in Initializing status. When the Start connection pool option is used on a suspended connection pool, it will simply resume operation.
Suspend Connection Pool	Relevant only for active connection pools. Will stop creating new connections and connection pools for new requests, but will not close the existing connections in the pool.
Resume Connection Pool	Resumes the possibility to use a suspended host service of the application
Stop Connection Pool	Stop providing connection pool and close all connections in the pool. During this process, the connection pool enters Stopping status, until all connections are closed. Then the connection pool becomes Stopped. Reactivation will reload the connection pool configuration.
Restart Connection Pool	Stop the connection pool. After it reaches Stopped status, start the connection pool again.

Viewing Connection Monitoring Information

To view a form that displays the run time information about a specific connection of a host service, open ApplinX Administrator and click on the **Management>Current Activity>Connection Pools** node and select a connection pool. Right-click the required connection in the Main view section and select **Show Monitor**. The *Connection Information* dialog box which displays run time information about a specific connection of a host service appears.



Connection

Connection ID

The Identifier of the displayed connection.

Created

Creation time of this connection.

Status

The current status of the connection. One of: "Active/ Ready/ Initializing/ Recycling/ Keep-alive/ Terminating/ Broken".

Status changed

The time of the last change of the connection's status.

Sessions**Session ID**

Active connections only: displays the ID of the session holding the displayed connection.

Number of sessions served

The number of sessions this specific connection served so far.

Connection Information**Using connection information ID**

If a Connection Information set is used by this connection pool, this is the ID of the specific record used by the displayed connection.

Message Panel

Displays error messages for broken connections.

3

Users: Roles and Permissions

- Multiple Developers Working on the same Application 28
- New User Properties 29
- Defining User Permissions 30
- Defining Passwords 30
- Disabling a User's Account 31
- Adding a New Group 31

The Security node in ApplinX allows managing users, groups and their permissions. It is possible to define certain permissions for a group, and then associate users with this group, giving the user the permissions defined for this group. For example, a specific application that has a list of users who can develop the application and a list of users who can only view the application will have two groups with relevant permissions, and users will be associated to the relevant group. A change in the group permissions will take affect on all users belonging to this group. Users will inherit the permissions from all the groups to which they have been associated. Specific permissions given to a user, will override group permissions. For example, if a user inherits edit permission for 'CompositeDemo' but also has view permission, he will have view permission only.

Users with Administrator or Supervisor permissions, can access the Security node and manage users and groups.

Multiple Developers Working on the same Application

ApplinX applications are typically developed by more than one user. This can sometimes cause conflicts on the ApplinX server. Working methodologically and investing time and effort in planning the development and design of the application can help prevent such conflicts:

- Divide responsibilities between the developers (such as developers working on specific entity types, or workflows).
- Provide each user with a unique user name and determine permissions according to user names.
- Work with folders: Permissions can be given to specific folders or users. These permissions can be defined for specific entities/processes.

Typical conflicting scenarios and outcomes:

- More than one developer editing the Application Properties: ApplinX will save the changes of the first developer who saves the changes.
- More than one developer editing an entity:

When more than one developer edits the same entity, and one of the developers saves the entity, the other developers receive a message indicating that this entity has been saved by another developer. You are required to determine whether you would like to work on the newly saved entity (and update your editor to reflect the newly saved entity) or to continue working on the outdated editor.

If you choose to continue working on the outdated editor then when trying to save the entity, you will be informed of the name of the user who made the changes and you will be able to decide whether to either:

- Overwrite the changes that the other developer has made.

- Save the entity with a different name. Note that references that pointed to the original entity will not point to this entity and need to be added manually. References that this entity referred to will be maintained.
- Discard the changes that you made.

New User Properties

The *New User* dialog box is used to define new users, their permissions and passwords. Access this dialog box by selecting **Management>Security>Users** in the ApplinX Explorer and then clicking on the **New** icon in the Toolbar. The *New User* dialog box is displayed. Fill in the **Name**, **Full Name** and **Description** and define associated groups and permissions.



Note: If you do not associate a group to a user, the user will, by default, be associated with Everyone.

Name

The unique identifier of the user. Can contain only digits, English letters (upper or lower case), underscore and spaces. (Obligatory field)

Full Name

The full name of the user.

Description

A suitable description of the user.

Associated groups

The user belongs to these groups. If you do not associate a user with a group, the user will, by default, be associated with Everyone.

Add

Allows you to add one or more groups to the list of groups associated with the user.

Remove

Allows you to remove a group from the list of associated groups by first selecting the group name and then clicking on the Remove button.

Permissions

Displays a dialog box where the folders the user can view and/or edit are defined. Refer to [Defining User Permissions](#).

Password

User password, required when accessing ApplinX. Refer to [Defining Passwords](#).

Account is disabled

Determines if the account will be disabled.

System Administrator

When checked, provides the user/group with System Administrator permissions.

Defining User Permissions

▶ To view or edit a user's permissions

- 1 Select Management>Security>Users in the ApplinX Explorer and select the relevant user. The User dialog box is displayed.
- 2 Click Permissions. The User Permissions dialog box is displayed.
- 3 To add a permission, click the Add button. The Select Folder dialog box appears. Select from the list of applications or folders in order to define the user's permissions for this application or folder and click OK.

ApplinX

Top-level permission for all ApplinX features and operations.

Management

Permission for runtime monitoring and managing.

Applications (previously Composer)

Development permission for all applications.

<Application Name>

Per application permission.



Note: The Administrator's permissions cannot be changed.

- 4 Check the Edit or View check boxes to change the selected permissions level.
- 5 To remove a permission, select a permission and click Remove.

Defining Passwords

▶ To change a user's password

- 1 Select Management>Security>Users node in the ApplinX Explorer.
- 2 Double-click on the relevant user or define a new user. The User dialog box is displayed.



Note: It is highly recommended to changing the Administrator's password often.

- 3 In the User dialog box click on the Password button. The User Permissions dialog box is displayed.
- 4 In the New password field, enter the new password.

- 5 In the Confirm new password field, enter the new password again and click OK.

Disabling a User's Account

▶ To disable a user's account

- 1 Select Management>Security>Users node in the ApplinX Explorer.
- 2 Double-click on the relevant user. The Information dialog box is displayed.
- 3 Click the Account is disabled check box to disable a user account.

Adding a New Group

▶ To add a new group

- 1 Select Management>Security>Groups node.
- 2 Either click the New button on the toolbar or right-click the Groups node and select New. The New Group dialog box appears.
- 3 Fill in the Name (can contain only digits, English letters (upper or lower case), underscore and spaces) and Description and define the users registered in this group.
- 4 Click the Add or Remove buttons to add or remove users to or from this group. There are four built in users.

Administrator

Built-in account for administering the ApplinX Server.

sysDeveloper

Built-in account for configuring and developing the ApplinX Server.

sysOperator

Built-in account for monitoring and managing the ApplinX Server.

sysUser

Built-in account with all administrator rights except managing groups and users.



Note: System (pre-defined) groups and users cannot be deleted.

There are a number of predefined groups:

Everyone

System group that includes all ApplinX users.

Developers

System group with full access to all the applications on the ApplinX Server.

Supervisors

System group with complete and unrestricted access to the ApplinX Server.



Note: System (pre-defined) groups and users cannot be deleted.

4 Administrative Web Services API

- Retrieving Server Information 34
- Retrieving Session Information 36
- Managing Connection Pools 39
- Managing Connection Pools Connection Information Sets 48
- Managing RPC Connection Pools 52

ApplinX Administrative Web Services API provides the developer the capability to retrieve data and perform actions based on information received from ApplinX server in runtime, without accessing the ApplinX Designer or Administrator but rather using standard Web services.

Using these Web services you can:



Note: The user name required in this method refers to a user who has ApplinX server Administrator permissions.

Retrieving Server Information

This Web service retrieves data regarding server information.

URL: <http://localhost:2380/wsstack/services/ServerManager?wsdl>



Note: This address is relevant when working with the WS-Stack in local mode. When working in remote mode, you need to update the server address to reflect the WS-Stack server address.

Method: `getServerInformation`

Returns a `ServerInformationResponse` object which contains the `ServerInformation` object.

Format: `ServerInformationResponse getServerInformation(ServerInformationRequest request)`

ServerInformationRequest parameters

String `username`

The name of the user who has the relevant permissions to access ApplinX server.

String `password`

The user's password

ServerInformationResponse parameters:

String `version`

The ApplinX server's version.

String `startedTime`

The date and time the server was last initialized.

int `activeSessions`

The number of currently active sessions.

int idleSessions

The number of sessions currently idle (connected, but detached).

int processingSessions

The number of sessions currently performing actions against the host.

int totalSessions

The total number of sessions opened since the server was started.

int startedThreads

The number of threads that were activated.

int idleThreads

The number of threads that were activated, but are currently not being used.

long allocatedMemory

The total amount of memory (in bytes) that is currently allocated to ApplinX server on the Java Virtual Machine.

long freeMemory

The amount of memory (in bytes) currently available for ApplinX to use.

Method: getSessionCounters

Returns a `sessionsCountersResponse` object which contains the `ConnectionsPerLicense` object.

Format: `sessionsCountersResponse getSessionCounters(sessionsCountersRequest request)`

sessionsCountersRequest parameters:**String username**

The name of the user who has the relevant permissions to access ApplinX server.

String password

The user's password

sessionsCountersReponse parameters:

Each of the parameters includes the number of connections currently being used, the maximum number of connections ever connected at one time and the date and time that this occurred. Notice that each of the parameters relates to a specific type of connection.

numberOfWebEnablementDisplay

Relates to Web enablement connections (excluding printer sessions).

numberOfWebEnablementPrinter

Relates to the printer sessions. The printer sessions are counted as Web Enablement connections.

numberOfSOAEnablement

Relates to the SOA enablement connections (excluding Web integration and RPC connections).

numberOfWebIntegration

Relates to Web Integration connections. The Web Integration connections are counted as SOA connections.

numberOfRPCConnections

Relates to RPC connections. The RPC connections are counted as SOA connections.

numberOfUnassignedPoolConnections

Relates to the unassigned connections in the connection pool.

Retrieving Session Information

This Web service retrieves data regarding session information.

URL: <http://localhost:2380/wsstack/services/SessionManager?wsdl>



Note: This address is relevant when working with the WS-Stack in local mode. When working in remote mode, you need to update the server address to reflect the WS-Stack server address.

Method: getAllSessions

Returns a object which contains a list of all the sessions that are open on the server.

Format: `GetAllSessionsResponse getAllSessions(GetAllSessionsRequest request)
getServerInformation(ServerInformationRequest request).`

GetAllSessionsRequest parameters

String username

The name of the user who has the relevant permissions to access ApplinX server.

String password

The user's password

GetAllSessionsResponse Parameters

Session [] sessions

An array of **Session** objects which contain the session information.

Method: getApplicationSessions

Returns a `GetApplicationSessionsResponse` object which contains a list of sessions that are connected to a specific application.

Format: `GetApplicationSessionsResponse`
`getApplicationSessions(GetApplicationSessionsRequest request)`

GetApplicationSessionsRequest parameters**String username**

The name of the user who has the relevant permissions to access ApplinX server.

String password

The user's password

String appName

The name of the application on ApplinX server

Session Information Response Parameters**Session [] sessions**

An array of **Session** objects which contain the session information.

Method: getServiceSessions

Returns a `GetServiceSessionsResponse` object which contains a list of sessions that are connected to a specific Connection pool.

Format: `GetServiceSessionsResponse` `getServiceSessions(GetServiceSessionsRequest request)`

GetServiceSessionsRequest parameters**String username**

The name of the user who has the relevant permissions to access ApplinX server.

String password

The user's password

String appName

The name of the application on ApplinX server

String serviceName

The name of the Connection Pool

GetServiceSessionsResponse Parameters

Session [] sessions

An array of **Session** objects which contain the session information.

Method: cancelSession

Returns a `CancelSessionResponse` object which contains a boolean that indicates that the session has been canceled.

Format: `CancelSessionResponse cancelSession(CancelSessionRequest request)`

CancelSessionRequest parameters

String username

The name of the user who has the relevant permissions to access ApplinX server.

String password

The user's password

String sessionId

The ID of the session that you would like to cancel.

CancelSessionResponse Parameters

boolean isSuccessful

Returns true or false, to indicate the success or failure of the action.

Session Object Attributes

String id

The session's ID on the ApplinX server.

String description

The session's description. For example, this may be the session's computer address.

String type

The type of session: Display session, Printer session, RPC session, Web Integration session or Development session.

String application

The name of the application on ApplinX server to which this session is connected.

String deviceName

Workstation ID, available only in certain protocols.

String state

The current communication status between ApplinX server and the host. Can be either: Idle (connected, not attached), Initializing, Processing (executing an action), Active (attached), or Disconnecting.

String idleTime

The time period a session has not performed a communication activity with the host.

String currentScreen

The name of the current screen. When the screen is not identified this will be UNKNOWN.

String userAddress

The IP address from where the session is connected to ApplinX.

String hostAddress

The IP address of the host.

String replayFile

The GCT file name that is working with this session and the screen number in the GCT file.

String traceFile

The name of the trace file that is tracing the current session.

int bytesSent

The number of bytes sent to the host.

int bytesReceived

The number of bytes received from the host

String serviceName

The name of the connection pool used by the current session. Will return an empty value when no connection pool is used by the session.

Managing Connection Pools

This Web service retrieves runtime data regarding existing connection pools and enables starting and stopping these services.

URL: <http://localhost:2380/wsstack/services/ServiceManager?wsdl>



Note: This address is relevant when working with the WS-Stack in local mode. When working in remote mode, you need to update the server address to reflect the WS-Stack server address.

Method: `getApplicationServices`

Returns a `GetApplicationServicesResponse` object which contains a list of connection pools and their status, for a specific application.

Format: `GetApplicationServicesResponse`
`getApplicationServices(GetApplicationServicesRequest request)`

GetApplicationServicesRequest parameters

String username

The name of the user who has the relevant permissions to access ApplinX server.

String password

The user's password

String appName

The name of the application on ApplinX server

GetApplicationServicesResponse Parameters

Service [] services

An array of **Service** objects which contain the session information.

Method: `getFolderServices`

Returns a `GetFolderServicesResponse` object which contains a list of names and status of connection pools that are in a specific folder of an application.

Format: `GetFolderServicesResponse` `getFolderServices(GetFolderServicesRequest request)`

GetFolderServicesRequest parameters

String username

The name of the user who has the relevant permissions to access ApplinX server.

String password

The user's password

String appName

The name of the application on ApplinX server

String folder

The name of the folder where the connection pools are located.

GetFolderServicesResponse Parameters

Service [] services

An array of [Service](#) objects which contain the session information.

Service Object Attributes

Service attributes:

String name

The name of the connection pool.

String folder

The folder in which the connection pool is placed.

String status

The connection pool's status: Not Started, Initializing, Active, In standby, Suspended, Stopping or Stopped.

int activeConnections

The number of connections currently held by a session (user).

int readyConnections

The number of connections ready for use.

int processingConnections

The number of connections currently in the Processing state.

long averageWaitTime

The average time (in milliseconds) sessions waited for a READY connection (calculated only among those sessions that waited) multiplied by the percentage of waiting sessions. For example: if 8% sessions had to wait, and in average each of those waited 1000 milliseconds, the overall average wait time was: $0.08 * 1000 = 80$ milliseconds.

int percentOfWaiting

The percent of sessions that did not immediately get a connection when trying to connect to ApplinX.

int connectionCount

The total number of connections in the connection pool (since the last time the connection pool was started), ignoring broken connections.

int maxConnections

The maximum number of connections that were connected concurrently since the connection pool started.

int sessionCount

The total number of sessions that connected to the host service since the connection pool started.

int maxConcurrentSessions

The maximum number of sessions that were connected concurrently since the connection pool started.

String connectionInfoName

The name of the information set used by this connection pool.

int numberOfCurrentlyWaiting

The number of users currently waiting for a connection.

int numberOfTimeouts

the number of users who received a timeout after a connection was not assigned to them.

int numberOfWaitedUsers

the total number of users who waited for a connection since the connection pool was last started.

long maxWaitTime

Maximum time, since the session started, that a user waited for a connection.

CancelConnectionResponse Parameters

boolean isSuccessful

Returns true or false, to indicate the success or failure of the action.

Method: cancelConnection

Returns a `CancelConnectionResponse` object which contains a boolean that indicates that the connection has been canceled.

Format: `CancelConnectionResponse cancelConnection(CancelConnectionRequest request)`

CancelConnectionRequest parameters

username

The name of the user who has the relevant permissions to access ApplinX server.

password

The user's password

appName

The name of the application on ApplinX server

serviceName

The name of the connection pool

folder

The name of the folder where the connection pools are located.

connectionId

The ID of the connection which you would like to cancel.

CancelConnectionResponse Parameters

boolean isSuccessful

Returns true or false, to indicate the success or failure of the action.

Method: getServiceConnections

Returns a `GetServiceConnectionsRequest` object which contains a list of connections for a specific Connection Pool.

Format: `GetServiceConnectionsRequest getServiceConnections(GetServiceConnectionsRequest request)`

GetServiceConnectionsRequest parameters

String username

The name of the user who has the relevant permissions to access ApplinX server.

String password

The user's password

String appName

The name of the application on ApplinX server

String serviceName

The name of the connection pool

GetServiceConnectionsResponse parameters

ServiceConnection [] connections

An array of [ServiceConnection](#) objects which contain the session information.

ServiceConnection object attributes:

String ConnectionId

The identifier of the connection.

String status

The current status of the connection. Possible values: Active, Ready, Initializing, Recycling, Keep-alive, Terminating or Broken.

String sessionId

Active connections only—displays the ID of the session holding the displayed connection.

String elapsedTime

The amount of time that has elapsed since the session status last changed.

String errorMessage

Displays error messages for broken connections.

String createdTime

The time the connection was created.

String statusChangedTime

The time the status was last changed.

int sessionServed

The number of sessions this specific connection served so far.

String connectionInformation

The connection information set row number used by the connection.

String currentScreen

The name of the current screen.

Method: startService

Starts the connection pool specified in the request and returns a response object with a boolean indicating success or failure.

Format: `StartServiceResponse startService(StartServiceRequest request)`

StartServiceRequest parameters

String username

The name of the user who has the relevant permissions to access ApplinX server.

String password

The user's password

String appName

The name of the application on ApplinX server

String serviceName

The name of the connection pool

String folderName

The name of the folder where the connection pool is located. By default, this is the root folder.

StartServiceResponse Parameters

boolean isSuccessful

Returns true or false, to indicate the success or failure of the action.

Method: stopService

Stops the connection pool specified in the request and returns a `StopServiceResponse` object with a boolean indicating success or failure.

Format: `StopServiceResponse stopService(StopServiceRequest request)`

StopServiceRequest parameters**String username**

The name of the user who has the relevant permissions to access ApplinX server.

String password

The user's password

String appName

The name of the application on ApplinX server

String serviceName

The name of the connection pool

String folderName

The name of the folder where the connection pool is located. By default, this is the root folder.

StopServiceResponse Parameters**boolean isSuccessful**

Returns true or false, to indicate the success or failure of the action.

Method: stopAllServices

Stops all the connection pools of the application and returns a `StopAllServicesResponse` object with a boolean indicating success or failure.

Format: `StopAllServicesResponse stopAllServices(StopAllServicesRequest request)`

StopAllServicesRequest parameters**String username**

The name of the user who has the relevant permissions to access ApplinX server.

String password

The user's password

String appName

The name of the application on ApplinX server

StopAllServicesResponse Parameters

boolean isSuccessfull

Returns true or false, to indicate the success or failure of the action.

Method: suspendService

Suspends the available connection pool of the application and returns a `SuspendServiceResponse` object with a boolean indicating success or failure.

Format: `SuspendServiceResponse suspendService(SuspendServiceRequest request)`

SuspendServiceRequest parameters

String username

The name of the user who has the relevant permissions to access ApplinX server.

String password

The user's password

String appName

The name of the application on ApplinX server

String serviceName

The name of the connection pool

String folderName

The name of the folder where the connection pool is located. By default, this is the root folder.

SuspendServiceResponse Parameters

boolean isSuccessfull

Returns true or false, to indicate the success or failure of the action.

Method: StandbyService

Suspends the available connection pool of the application and returns a `standbyServiceResponse` object with a boolean indicating success or failure.

Format: `StandbyServiceResponse standbyService(standbyServiceRequest request)`

standbyServiceRequest parameters**String username**

The name of the user who has the relevant permissions to access ApplinX server.

String password

The user's password

String appName

The name of the application on ApplinX server

String serviceName

The name of the connection pool

String folderName

The name of the folder where the connection pool is located. By default, this is the root folder.

StandbyServiceResponse Parameters**boolean isSuccessful**

Returns true or false, to indicate the success or failure of the action.

Method: resumeService

Resumes the possibility to use a suspended connection pool of the application and returns a `ResumeServiceResponse` object with a boolean indicating success or failure.

Format: `ResumeServiceResponse resumeService(ResumeServiceRequest request)`

ResumeServiceRequest parameters**String username**

The name of the user who has the relevant permissions to access ApplinX server.

String password

The user's password

String appName

The name of the application on ApplinX server

String serviceName

The name of the connection pool

String folderName

The name of the folder where the connection pool is located. By default, this is the root folder.

ResumeServiceResponse Parameters

boolean isSuccessful

Returns true or false, to indicate the success or failure of the action.

Managing Connection Pools Connection Information Sets

This Web service updates the connection information set cell values.

URL: <http://localhost:2380/wsstack/services/ConnectionInfoManager?wsdl>



Note: This address is relevant when working with the WS-Stack in local mode. When working in remote mode, you need to update the server address to reflect the WS-Stack server address.

Method: getConnectionInfoSet

Returns a `GetConnectionInfoSetResponse` object which contains a `ConnInfoSet` object.

Format: `GetConnectionInfoSetResponse getConnectionInfoSet (GetConnectionInfoSetRequest request)`

GetConnectionInfoSetRequest parameters

String username

The name of the user who has the relevant permissions to access ApplinX server.

String password

The user's password

String appName

The name of the application on ApplinX server

String connectionInfoName

The name of the connection information set

GetConnectionInfoSetResponse parameters**ConnInfoSet connectionInfoSet**

Objects which contain the connection information set parameters

ConnInfoSet parameters**ConnInfoColumn[] columns**

Array of the connection information columns, not including the ID and Repeat columns.

ConnInfoRow[] rows

Array of the connection information set rows.

ConnInfoColumn parameters**Boolean hidden**

Indicates whether the column is defined as a password column.

int type

Indicates the column type: Variables (0), Application fields (1) and Application and connection parameters (2).

String name

Column name.

ConnInfoRow parameters**ConnInfoCell[] cells**

Array of the cells in a specific row in the connection information set not including the ID and Repeat cells.

int Repeat

The value of the repeat cell.

int id

The value of the ID cell.

ConnInfoCell parameters**String value**

The cell's value.

String columnName

The cell's column name.

int columnType

Indicates the cell's column type: Variables (0), Application fields (1) and Application and connection parameters (2).



Note: The user name required in this method refers to a user who has ApplinX server Administrator permissions.

Method: `updateConnectionInfoRow`

Returns a `UpdateConnectionInfoRowResponse` object which contains a boolean indicating whether the update operation succeeded.

Format: `UpdateConnectionInfoRowResponse updateConnectionInfoRow(UpdateConnectionInfoRowRequest request)`

UpdateConnectionInfoRowRequest parameters

String `username`

The name of the user who has the relevant permissions to access ApplinX server.

String `password`

The user's password

String `appName`

The name of the application on ApplinX server

String `connectionInfoName`

The name of the connection information set

ConnInfoRow `row`

The row object that contains the information that we wish to update in the connection information set. The following parameters must be set:

- The ID of the row as it appears in the server.
- The repeat number: when either updating the repeat number or preserving the number currently set on the server (when this number is not zero).
- The value of each cell in the `ConnInfoCell[]`. Caution: Null values will replace existing values on the server.

UpdateConnectionInfoRowResponse parameters

boolean `isSuccessful`

Returns true or false, to indicate the success or failure of the action.

Method: addConnectionInfoRow

Format: AddConnectionInfoRowResponse addConnectionInfoRow(AddConnectionInfoRowRequest request)

AddConnectionInfoRowRequest parameters**String username**

The name of the user who has the relevant permissions to access ApplinX server.

String password

The user's password

String appName

The name of the application on ApplinX server

String connectionInfoName

The name of the connection information set

ConnInfoRow row

The row object that contains the information that we wish to add to the connection information set. See the following guidelines for setting the object parameters:

- The ID of the row as it appears in the server.
- The repeat number: when either updating the repeat number or preserving the number currently set on the server (when this number is not zero).
- The value of each cell in the ConnInfoCell[]. Caution: Null values will replace existing values on the server.

AddConnectionInfoRowResponse parameters**boolean isSuccessfull**

Returns true or false, to indicate the success or failure of the action.

Method: removeConnectionInfoRow

Format: RemoveConnectionInfoRowResponse removeConnectionInfoRow(RemoveConnectionInfoRowRequest request)

RemoveConnectionInfoRowRequest parameters

String username

The name of the user who has the relevant permissions to access ApplinX server.

String password

The user's password

String application

The name of the application on ApplinX server

String connectionInfoName

The name of the connection information set

int rowed

The row ID

RemoveConnectionInfoRowResponse parameters

boolean isSuccessfull

Returns true or false, to indicate the success or failure of the action.

Managing RPC Connection Pools

This Web service retrieves runtime data regarding existing RPC connection pools and enables re-setting the pool.

URL:<http://localhost:2380/wsstack/services/ProgramPoolManager?wsdl>



Note: This address is relevant when working with the WS-Stack in local mode. When working in remote mode, you need to update the server address to reflect the WS-Stack server address.

Method: getPoolInformation

Returns a `PoolInformationResponse` object which contains runtime information regarding the pool manager. `resetPool(ProgramPoolRequest request)` resets the pool.

Format: `PoolInformationResponse getPoolInformation(ProgramPoolRequest request)`

ProgramPoolRequest parameters**String username**

The name of the user who has the relevant permissions to access ApplinX server.

String password

The user's password

String appName

The name of the application on ApplinX server

PoolInformationResponse parameters**int availableConnectionsCount**

The number of available connections in the pool.

int maxPoolSize

The maximum number of connections that can exist in the pool concurrently.

int excludedCount

The number of resources that were invalidated but are still in use

int minPoolSize

The minimum number of connections that must exist in a pool.

int poolSize

The number of connections that currently exist in the pool.

int awaitingCheckinCount

The number of used resources (including the excluded resources).

Method: resetPool

This method restarts the pool.

Format: `resetPool()`

5 Batch Automation Utilities

- Migration Batch File 56
- Convert Utility Batch File 56
- Importing Screens using a Batch File 57
- Export Batch File 58
- Import Batch File 60
- Extracting Activities from Trace Files 62

You may be in a situation where a GUI interface is not available. This may be a common problem when a Unix station is used. In other cases, it may be more convenient to double-click a batch file to activate the Mapping Utility via the Administrator. The batch files can be found in the utilities directory in ApplinX installation directory.

Migration Batch File

ApplinX applications from previous ApplinX versions are able to run on the current ApplinX version once you have performed a number of migration activities. Migration can be performed when installing the new ApplinX server version or via batch files after the new server has been installed. You can:

- Migrate all ApplinX applications, when installing/upgrading ApplinX.
- Migrate all ApplinX applications via batch files, after ApplinX has been installed.
- Migrate a specific ApplinX application, after ApplinX has been installed.

To migrate all ApplinX applications after installing/upgrading ApplinX you must run `migrate_ApplinX_server.bat/sh` file, enter the installation path of your previous installation, and then enter the new path of the current installation.

For example: `migrate_ApplinX_server.bat "c:\ApplinX52" "c:\SoftwareAG\ApplinX"`

Refer to [Migrating Applications from Previous ApplinX Versions](#)

Convert Utility Batch File

This utility is used to convert `gxz` files which include the application configuration from previous ApplinX versions, to `gxar` files.

▶ **To activate the Convert Utility batch file using the command prompt window:**

- 1 Open a command prompt window.
- 2 Change the current directory to the relevant directory.
- 3 Type `convert_gxz_to_gxar` followed by your required parameters. (The minus sign and letter should precede the value to distinguish between the parameters. The order of the parameters is not significant.). For example: `-u Administrator -f "C:\Documents and Settings\sagsis.gxz"`

Parameter	Description	Default
-s	Server address	127.0.0.1
-p	Server port	2323
-u	User name	
-w	Password	
-f	File name	

Importing Screens using a Batch File

Standard maps, such as Natural, BMS and MFS, are used in host applications and include the screen data such as static data and dynamic fields. ApplinX enables importing these application maps, saving time and effort spent on manually identifying screens and simplifying the update process when changes are made in the host. When importing application maps, a screen is automatically created from each map, minimizing errors that may occur when creating the screens manually, one by one. The ApplinX screen created includes identifiers (based on the static data) and fields (based on the dynamic data). ApplinX supports a number of different types of maps:

- Natural: Natural map support (from Systrans file).
- BMS: CICS basic map support.
- MFS: IMS message format service.
- SDFX: ApplinX generic map format, used for other standard maps. To create SDFX files refer to SDFX File Format Definition.
- SDF: Compatible with Software AG's JIS product.

The import map feature can be used to import an application's maps for a new application or to maintain and update previously imported maps. When updating previously imported maps, screen identifiers will be deleted and replaced, existing fields will be updated with their new positions and their references to other entities will be preserved. Fields that were previously imported, but no longer exist on the host will be deleted.



Note: Invalid entity names, such as names which include invalid characters such as "#" or begin with a digit, will be automatically corrected by omitting the invalid characters.

Maps can be imported either using the Import Host Screen Maps wizard or using a batch file.

▶ To import screens via a batch file (using the command prompt window):

- 1 Open a command prompt window.
- 2 Change the current directory to the <ApplinX home>/Utilities directory.

- 3 Type `screen_import.bat/sh` followed by your required parameters. (The minus sign and letter should precede the value to distinguish between the parameters. The order of the parameters is not significant.)

Parameter	Description	Default
-s	Server address	127.0.0.1
-p	Server port	2323
-u	ApplinX user name (Required parameter)	
-w	ApplinX user password	Empty by default
-a	ApplinX application name (Required parameter)	
-f	File name, or directory name (when importing more than one file). Required parameter	
-x	The file extension. All files from the given directory that have this extension will be loaded (when not specified, the default extension for the map type is used)	
-af	ApplinX target folder within the application repository.	Root folder
-t	Map type. Possible values: "sdf", "sdfx", "natural", "bms", "mfs" (required parameter).	natural
-m	Indicates where the error line is located: "first", "last", "lastm1" (last minus 1), "lastm2", "lastm3", "lastm4" (Natural maps only)	last
-mf	Message line field name (Natural maps only)	MessageLine
-k	Don't skip map with write command. (Natural maps only)	true (skip)

The screens created appear in the directory you determined in the **Target folder** field. The names of the screens are identical to the map names.

The report is displayed in the Eclipse console and includes a list of the screens added as well as the fields and tables created/updated/deleted.

Export Batch File

► To activate the Export batch file by using the command program prompt:

- 1 Open a command prompt window.
- 2 Change the current directory to the `<ApplinX home>/Utilities` directory.
- 3 Type `exportapp` followed by your required parameters. (The minus sign and letter should precede the value to distinguish between the parameters. The order of the parameters is not significant.)

exportapp Parameters

Parameter	Description	Default Value
-s	Server address	127.0.0.1
-p	Server port	2323
-u	User name	
-w	Password	
-a	Application name	
-f	The target folder and/or file name. <ul style="list-style-type: none"> ■ When only the path is specified (<pathname>followed by "\"), the file name is the application name. ■ When only the file name is specified, the file is created in the current location. 	<current location>\<application name>
Include one of the following parameters:		
-c	Export only the application configuration (gxar file)	
-e	Export only entities (gxz file)	
-l	Export the application configuration and the entities (gxar file)	

Examples for the -f parameter

- **Specify target folder and file name:** `exportapp.bat -s localhost -p 2323 -u administrator -a InstantDemo -f C:\SoftwareAG_821_GA\ApplinX\utilities\export\MyApplication -c`

The file MyApplication.gxar is created in the C:\SoftwareAG_821_GA\ApplinX\utilities\export\direrctory.

- **Specify target folder only:** `exportapp.bat -s localhost -p 2323 -u administrator -a InstantDemo -f C:\SoftwareAG_821_GA\ApplinX\utilities\export\ -c`

The file InstantDemo.gxar is created in the C:\SoftwareAG_821_GA\ApplinX\utilities\export\directory

- **Specify file name only:** `exportapp.bat -s localhost -p 2323 -u administrator -a InstantDemo -f MyApplication -c`

The file MyApplication.gxar is created in the current local directory.

- **Default when the parameter is not specified:** `exportapp.bat -s localhost -p 2323 -u administrator -a InstantDemo -c`

The file InstantDemo.gxar is created in the current local directory.

Examples for the -c, -e and -l parameters

- **Export application configuration only:** `exportapp.bat -s localhost -p 2323 -u administrator -a InstantDemo -f C:\SoftwareAG_821_GA\ApplinX\utilities\export\ -c`

The file InstantDemo.gxar is created.

- **Export entities only:** `exportapp.bat -s localhost -p 2323 -u administrator -a InstantDemo -f C:\SoftwareAG_821_GA\ApplinX\utilities\export\ -e`

The file InstantDemo.gxz is created.

- **Export application configuration and entities:** `exportapp.bat -s localhost -p 2323 -u administrator -a InstantDemo -f C:\SoftwareAG_821_GA\ApplinX\utilities\export\ -l`


The file InstantDemo.gxar is created.

Import Batch File

▶ **To activate the Import batch file by using the command program prompt:**

- 1 Open a command prompt window.
- 2 Change the current directory to the <ApplinX home>/Utilities directory.
- 3 Type `importapp` followed by your required parameters. (The minus sign and letter should precede the value to distinguish between the parameters. The order of the parameters is not significant.)

```
importapp.bat/sh [-a [attribute]] [-s [attribute]] [-p [attribute]] [-o [attribute]] [-u [attribute]] [-f [attribute]] [-w [attribute]]
```

 **Note:** When wishing to importing a complete ApplinX application you will require a gxar (ApplinX application archive) file. This file includes the application configuration, ApplinX entities (as a read only <gxz> file) and a trace file. When importing only the application's entities, you require the gxz file only.

importapp Parameters

Parameter	Description	Default Value
-a	ApplinX application name [required].	
-s	ApplinX Server address.	localhost
-p	ApplinX Server port.	2323
-o	One of the following operations can be performed: <ul style="list-style-type: none"> ■ x - Import entities from a gxz file, overriding conflicting entities. 	

Parameter	Description	Default Value
	<ul style="list-style-type: none"> ■ c - Import application from a gxar file, retaining the existing host configuration. The repository will be read-only. ■ h - Import application and host configuration from a gxar file (overriding existing host configuration). The repository will be read-only. ■ r - Import application and host configuration. When importing, retain the repository configuration (import the gxz within the gxar, to the currently configured repository). ■ hr - Perform both 'h' and 'r' operations. <p>When not set, entities and/or configuration will be imported to an existing application when one exists, or to a new application when there is no existing one.</p>	
-u	ApplinX user [required].	
-f	The path and name of the gxz/gxar file [required].	
-w	ApplinX user password.	



Note: The Session Data entity will be merged with the existing Session Data entity. When there is a conflict between the imported to the existing Session Data entity, your selection in this checkbox will determine how the Session Data entity will be.

Examples:

```
importapp.bat -u Administrator -a app2 -f c:\entities.gxz -o x
```

This command imports entities into the "app2" application (only if it exists), overriding any conflicting entities within the application.

```
importapp.bat -u Administrator -a app1 -f c:\app.gxar -o c
```

This command imports the host and application configuration, from the provided gxar file as a new application. The repository will be read-only.

```
importapp.bat -u Administrator -a app1 -f c:\entities.gxar -o h
```

This command retains the existing host configuration, and imports the "app1" application (entities and configuration) from the provided gxar file, overriding any conflicting entities within the application. The repository will be read-only.

```
importapp.bat -u Administrator -a app1 -f c:\entities.gxar -o r
```

This command imports the host configuration, and the "app1" application (just the configuration) from the provided gxar file, and imports the entities into the repository, using the existing repository configuration. The repository will not be read-only.

```
importapp.bat -u Administrator -a app1 -f c:\entities.gxar -o hr
```

This command imports the host configuration, retains the application configuration, and imports the "app1" application entities from the provided gxr file to the existing repository, overriding any conflicting entities within the application. The repository will not be read-only.

Extracting Activities from Trace Files

The Screen Process Extractor is used to analysis activities performed by the user and make business decisions based on this analysis. As part of the process, you will need analyze sessions/trace files. This is carried out either via a wizard in the Designer, typically used when developing, or via a batch file, typically used for the production environment. The following instructions detail how to extract activities from the trace files via a batch file (using the command prompt window)

1. Open a command prompt window.
2. Change the current directory to the <ApplinX home>/Utilities directory.
3. Type `extract_activities.bat/sh` followed by your required parameters. (The minus sign and letter should precede the value to distinguish between the parameters. The order of the parameters is not significant.)

Parameter	Description	Default
-s	Server address	127.0.0.1
-p	Server port	2323
-u	ApplinX user name (Required parameter)	
-w	ApplinX user password	Empty by default
-a	ApplinX application name (Required parameter)	
-x	The name of the XML file to use for the analysis process.	Default.xml
-d	A semi-colon of folders and gct files to analyze	The "TraceFilesLocations" specified in the xml file