

Creating a New Application

To define a new application you must:

- Create a New ApplinX Application
- Synchronize your Repository
- Verify the Application Connectivity

Create a New ApplinX Application



Exercise

Create a new ApplinX application:

- Provide your online host connection properties such as host type, IP address, port, etc.

Note:

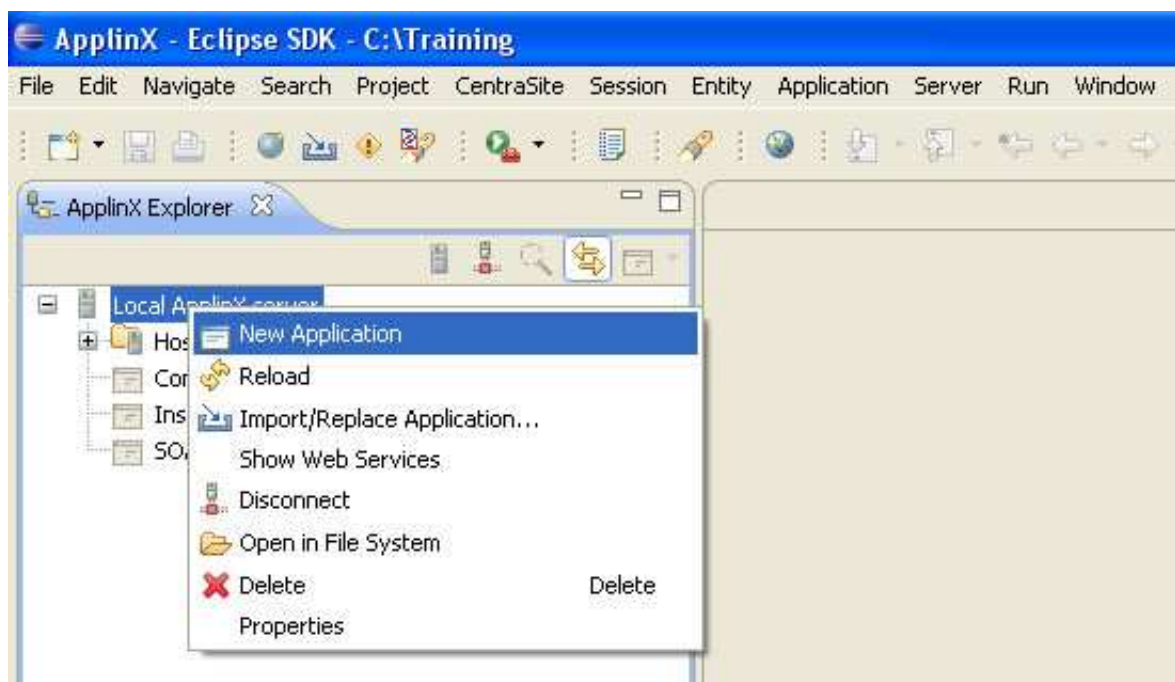
For practising purposes and also if the host connection is not available, use the InstantDemo replay file, that can be found in the *host-applications>InstantDemo>records* directory in the ApplinX installation directory.

- Use the database you defined as the application's repository.



Solution Steps:

1. Right-click on the ApplinX Server node and select **New Application**.



2. Enter a name (Description is optional) for the application and click **Next**.

Create a New Application

General Application Information

Enter a name for the application, a suitable description and select the initialization mode.

Application name:

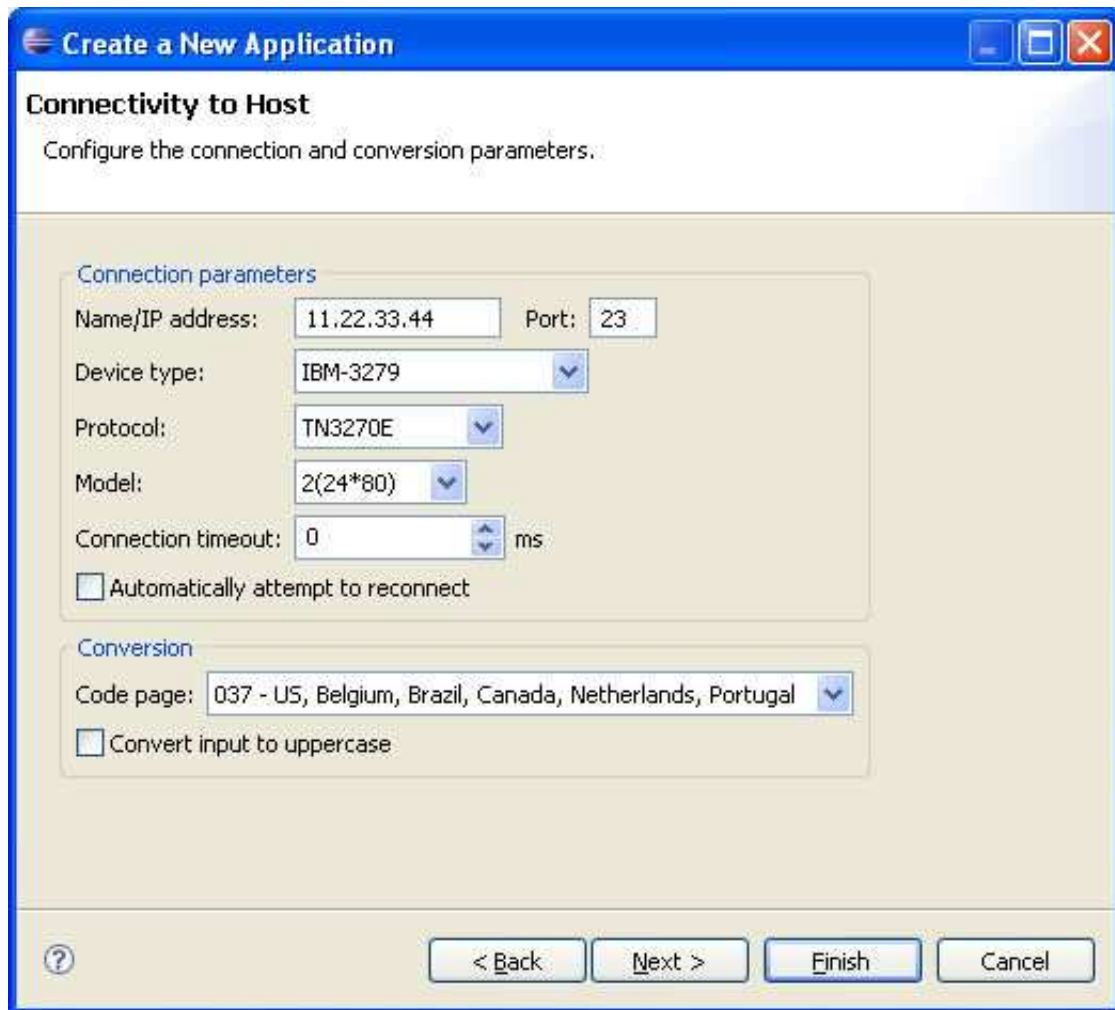
Description:

Initialization mode: Automatic
 When first accessed
 Disabled

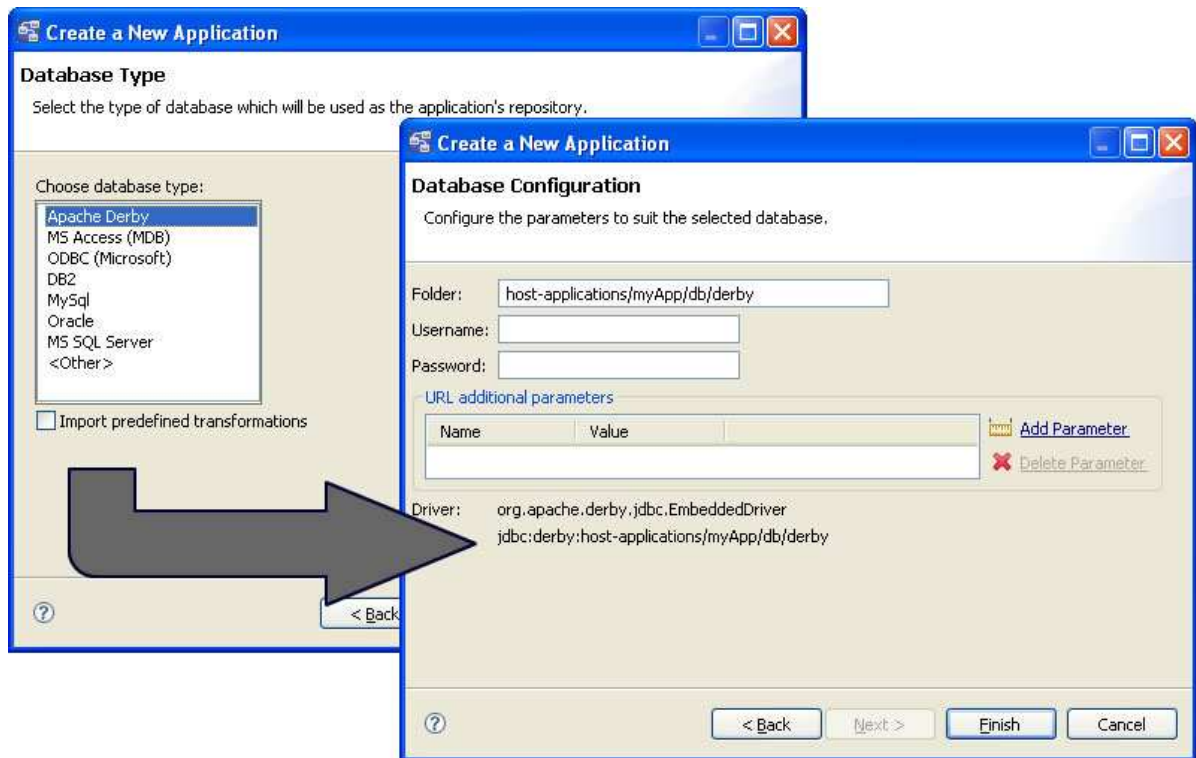
3. Enter a name for the host and select the **Host type** or select an existing host.

The screenshot shows a Windows-style dialog box titled "Create a New Application". The main heading is "Select a Host" with the instruction "Select whether to connect to an existing host or to define a new host." Below this, there are two radio button options: "Existing host:" (unselected) and "New host" (selected). The "Existing host:" option has a dropdown menu showing "CompositeDemo" and an "Edit..." button. The "New host" option has a "Host name:" text box containing "InstantTraining" and a "Host type:" list box. The list box contains the following items: AS/400, MainFrame (highlighted), Natual-Unix, Fujitsu, Unisys, BS2000, and Tandem. At the bottom of the dialog, there are four buttons: a help icon (?), "< Back", "Next >", "Finish", and "Cancel".

4. Define the IP address, device type, protocol and screen model of the host and click **Next**.



5. Select a database type from the list. You can select to import some predefined transformations into the database. Click **Next**. Configure the properties as necessary. and click **Test Connection** to test the connectivity.



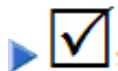
6. Click **Finish**.

Synchronize your Repository



Exercise

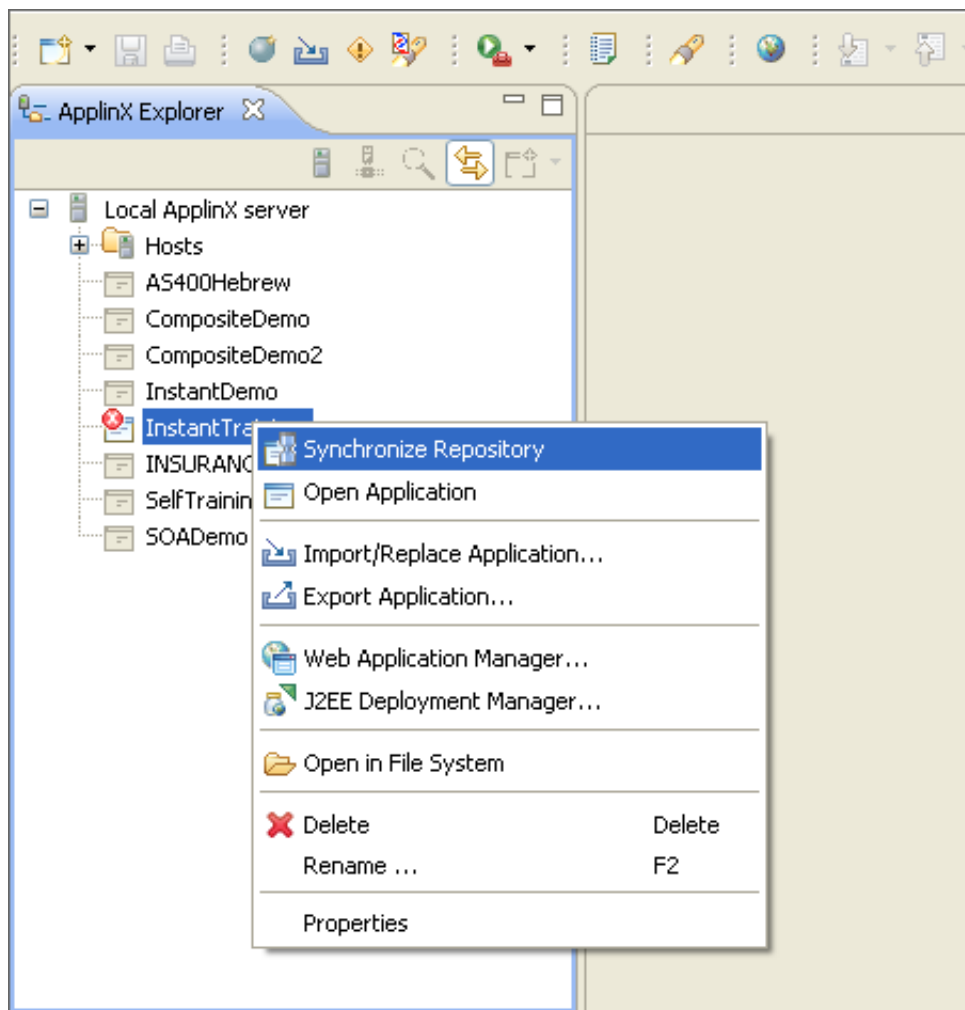
After defining the repository, synchronize it if needed.



Solution steps:

1. Right-click on the newly created application, and select **Synchronize Repository**.

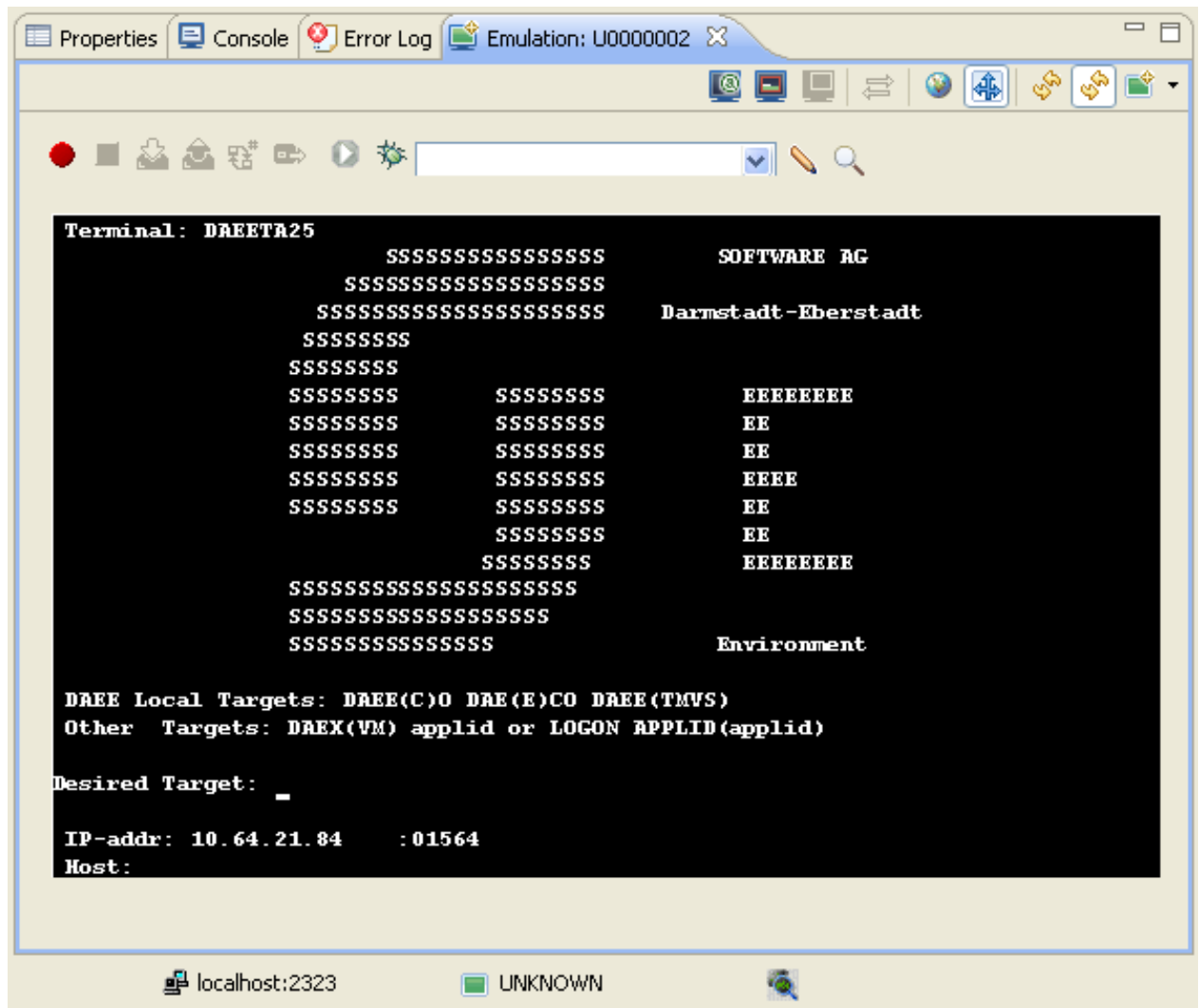
ApplinX will create the tables structure in the database you configured. At the end of the synchronization process a message will be displayed notifying whether the process was successful.



Verify the Application Connectivity

► To verify that the application was defined properly

1. Expand the relevant application node.
2. Expand the **Sessions** folder.
3. Right-click the **Default** connection node and select **Connect**. The first host screen of the Insurance Demo Application (or any other environment supplied by your trainer) will be displayed. Note that the initial connection to the host may take some time. Navigate between the screens to confirm connection and host functionality. Refer to Troubleshooting if this screen is not displayed.



  Accompanying movie: Creating a New Application