

webMethods EntireX

EntireX RPC Server for z/OS Batch

Version 10.5

October 2019

This document applies to webMethods EntireX Version 10.5 and all subsequent releases.

Specifications contained herein are subject to change and these changes will be reported in subsequent release notes or new editions.

Copyright © 1997-2019 Software AG, Darmstadt, Germany and/or Software AG USA, Inc., Reston, VA, USA, and/or its subsidiaries and/or its affiliates and/or their licensors.

The name Software AG and all Software AG product names are either trademarks or registered trademarks of Software AG and/or Software AG USA, Inc. and/or its subsidiaries and/or its affiliates and/or their licensors. Other company and product names mentioned herein may be trademarks of their respective owners.

Detailed information on trademarks and patents owned by Software AG and/or its subsidiaries is located at <http://softwareag.com/licenses>.

Use of this software is subject to adherence to Software AG's licensing conditions and terms. These terms are part of the product documentation, located at <http://softwareag.com/licenses/> and/or in the root installation directory of the licensed product(s).

This software may include portions of third-party products. For third-party copyright notices, license terms, additional rights or restrictions, please refer to "License Texts, Copyright Notices and Disclaimers of Third-Party Products". For certain specific third-party license restrictions, please refer to section E of the Legal Notices available under "License Terms and Conditions for Use of Software AG Products / Copyright and Trademark Notices of Software AG Products". These documents are part of the product documentation, located at <http://softwareag.com/licenses> and/or in the root installation directory of the licensed product(s).

Use, reproduction, transfer, publication or disclosure is prohibited except as specifically provided for in your License Agreement with Software AG.

Document ID: EXX-BATCHRPC-105-20220422

Table of Contents

1 About this Documentation	1
Document Conventions	2
Online Information and Support	2
Data Protection	3
2 Introduction to the RPC Server for Batch	5
Worker Models	7
Inbuilt Services	8
Impersonation	10
Usage of Server Mapping Files	11
3 Administering the RPC Server for Batch	13
Customizing the RPC Server	14
Configuring the RPC Server	16
Locating and Calling the Target Server	27
Using SSL/TLS with the RPC Server	29
Starting the RPC Server	32
Stopping the RPC Server	32
Activating Tracing for the RPC Server	32
4 Extractor Service	35
Introduction	36
Scope	37
CA Librarian Support	37
Enabling the Extractor Service	38
Disabling the Extractor Service	38
Restrictions	39
5 Deployment Service	41
Introduction	42
Scope	43
Enabling the Deployment Service	43
Disabling the Deployment Service	44
6 Server-side Mapping Files	45
Server-side Mapping Files in the RPC Server	46
Deploying Server-side Mapping Files to the RPC Server	47
Undeploying Server-side Mapping Files from the RPC Server	48
Change Management of Server-side Mapping Files	49
List Deployed Server-side Mapping Files	49
Check if a Server-side Mapping File Revision has been Deployed	50
Access Control: Secure Server Mapping File Deployment	50
Ensure that Deployed Server-side Mapping Files are not Overwritten	50
Is There a Way to Smoothly Introduce Server-side Mapping Files?	50
7 Scenarios and Programmer Information	51
COBOL Scenarios	52
PL/I Scenarios	53
C Scenarios	54

Assembler Scenarios	54
Returning Application Errors	55

1 About this Documentation

▪ Document Conventions	2
▪ Online Information and Support	2
▪ Data Protection	3

Document Conventions

Convention	Description
Bold	Identifies elements on a screen.
Monospace font	Identifies service names and locations in the format <code>folder.subfolder.service</code> , APIs, Java classes, methods, properties.
<i>Italic</i>	Identifies: Variables for which you must supply values specific to your own situation or environment. New terms the first time they occur in the text. References to other documentation sources.
Monospace font	Identifies: Text you must type in. Messages displayed by the system. Program code.
{ }	Indicates a set of choices from which you must choose one. Type only the information inside the curly braces. Do not type the { } symbols.
	Separates two mutually exclusive choices in a syntax line. Type one of these choices. Do not type the symbol.
[]	Indicates one or more options. Type only the information inside the square brackets. Do not type the [] symbols.
...	Indicates that you can type multiple options of the same type. Type only the information. Do not type the ellipsis (...).

Online Information and Support

Product Documentation

You can find the product documentation on our documentation website at <https://documentation.softwareag.com>.

In addition, you can also access the cloud product documentation via <https://www.software-ag.cloud>. Navigate to the desired product and then, depending on your solution, go to “Developer Center”, “User Center” or “Documentation”.

Product Training

You can find helpful product training material on our Learning Portal at <https://knowledge.softwareag.com>.

Tech Community

You can collaborate with Software AG experts on our Tech Community website at <https://tech-community.softwareag.com>. From here you can, for example:

- Browse through our vast knowledge base.
- Ask questions and find answers in our discussion forums.
- Get the latest Software AG news and announcements.
- Explore our communities.
- Go to our public GitHub and Docker repositories at <https://github.com/softwareag> and <https://hub.docker.com/publishers/softwareag> and discover additional Software AG resources.

Product Support

Support for Software AG products is provided to licensed customers via our Empower Portal at <https://empower.softwareag.com>. Many services on this portal require that you have an account. If you do not yet have one, you can request it at <https://empower.softwareag.com/register>. Once you have an account, you can, for example:

- Download products, updates and fixes.
- Search the Knowledge Center for technical information and tips.
- Subscribe to early warnings and critical alerts.
- Open and update support incidents.
- Add product feature requests.

Data Protection

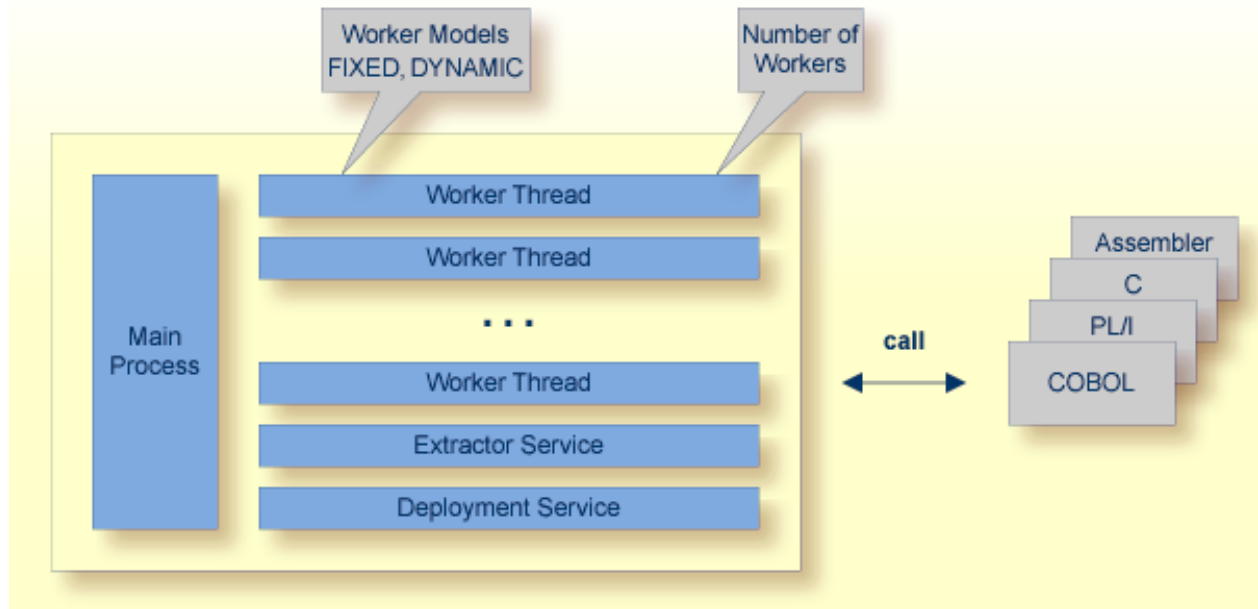
Software AG products provide functionality with respect to processing of personal data according to the EU General Data Protection Regulation (GDPR). Where applicable, appropriate steps are documented in the respective administration documentation.

2 Introduction to the RPC Server for Batch

▪ Worker Models	7
▪ Inbuilt Services	8
▪ Impersonation	10
▪ Usage of Server Mapping Files	11

The EntireX RPC Server for z/OS Batch allows standard RPC clients to communicate with RPC servers on the operating system z/OS running in batch mode. It supports the programming languages COBOL, PL/I and C and works together with the *COBOL Wrapper* and *IDL Extractor for COBOL*.

Worker Models



RPC requests are worked off inside the RPC server in worker threads, which are controlled by a main thread. Every RPC request occupies during its processing a worker thread. If you are using RPC conversations, each RPC conversation requires its own thread during the lifetime of the conversation. The RPC server provides two worker models:

- **FIXED**
The *fixed* model creates a fixed number of worker threads. The number of worker threads does not increase or decrease during the lifetime of an RPC server instance.
- **DYNAMIC**
The *dynamic* model creates worker threads depending on the incoming load of RPC requests.

For configuration and technical details, see parameter `workermodel` under *Administering the RPC Server for Batch*.

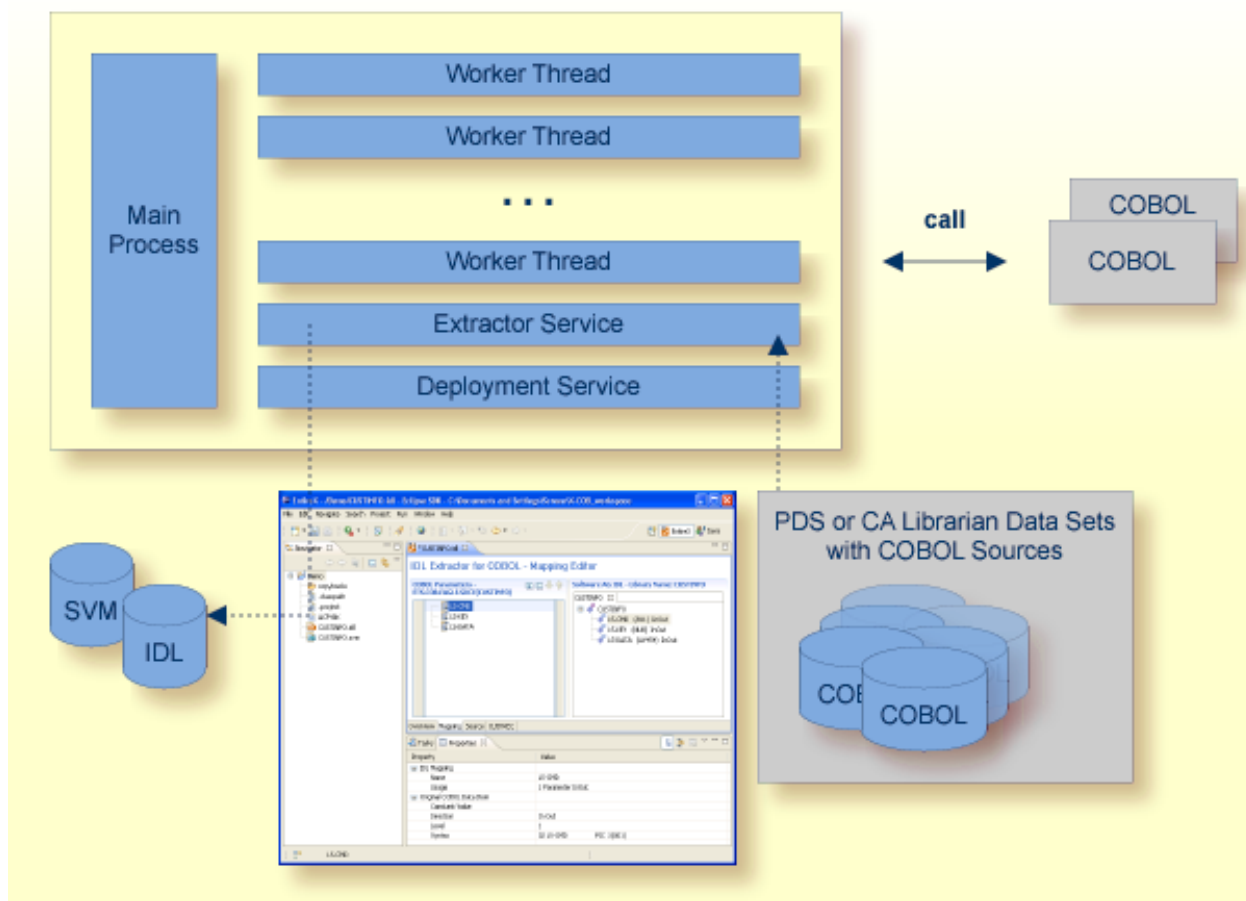
Inbuilt Services

RPC Server for Batch provides the following services for ease-of-use:

- Extractor Service
- Deployment Service

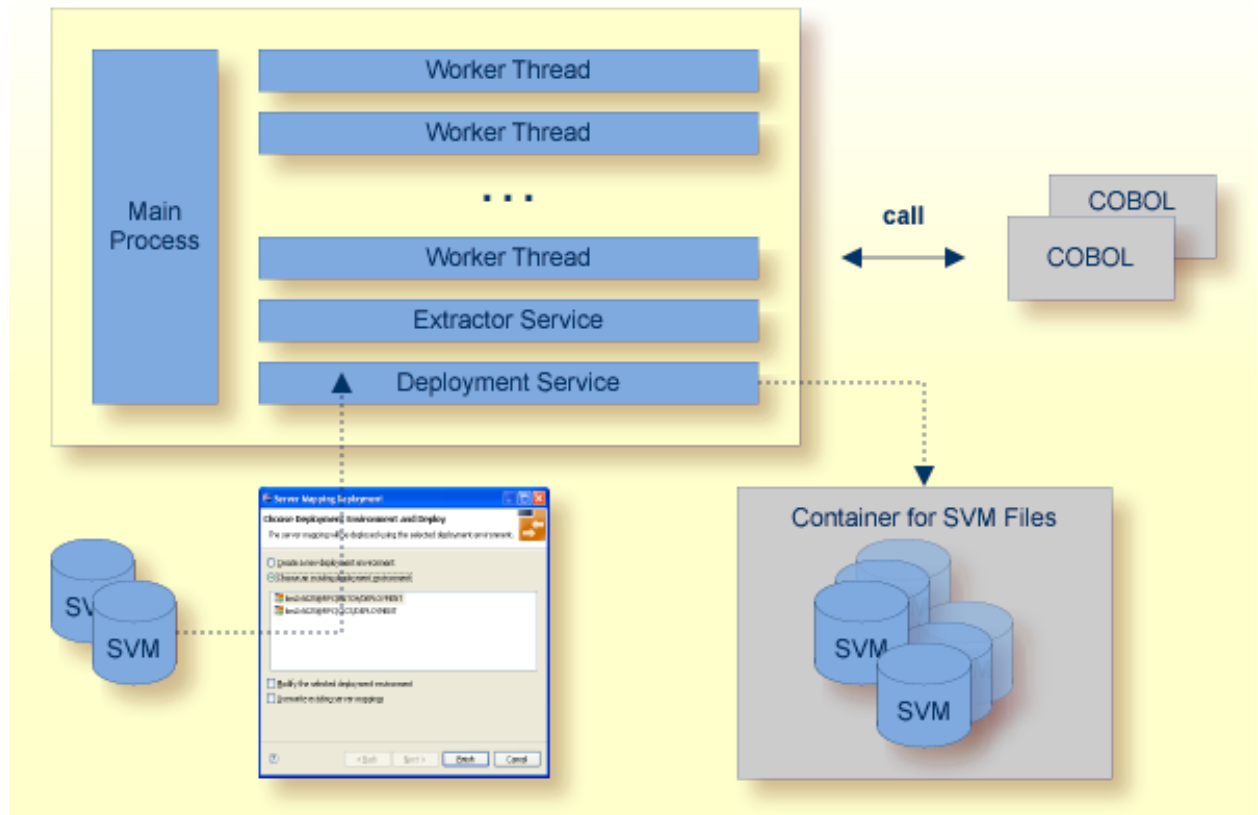
Extractor Service

The Extractor Service is a prerequisite for remote extractions with the IDL Extractor for COBOL and IDL Extractor for PL/I. See [Extractor Service](#) for more information.

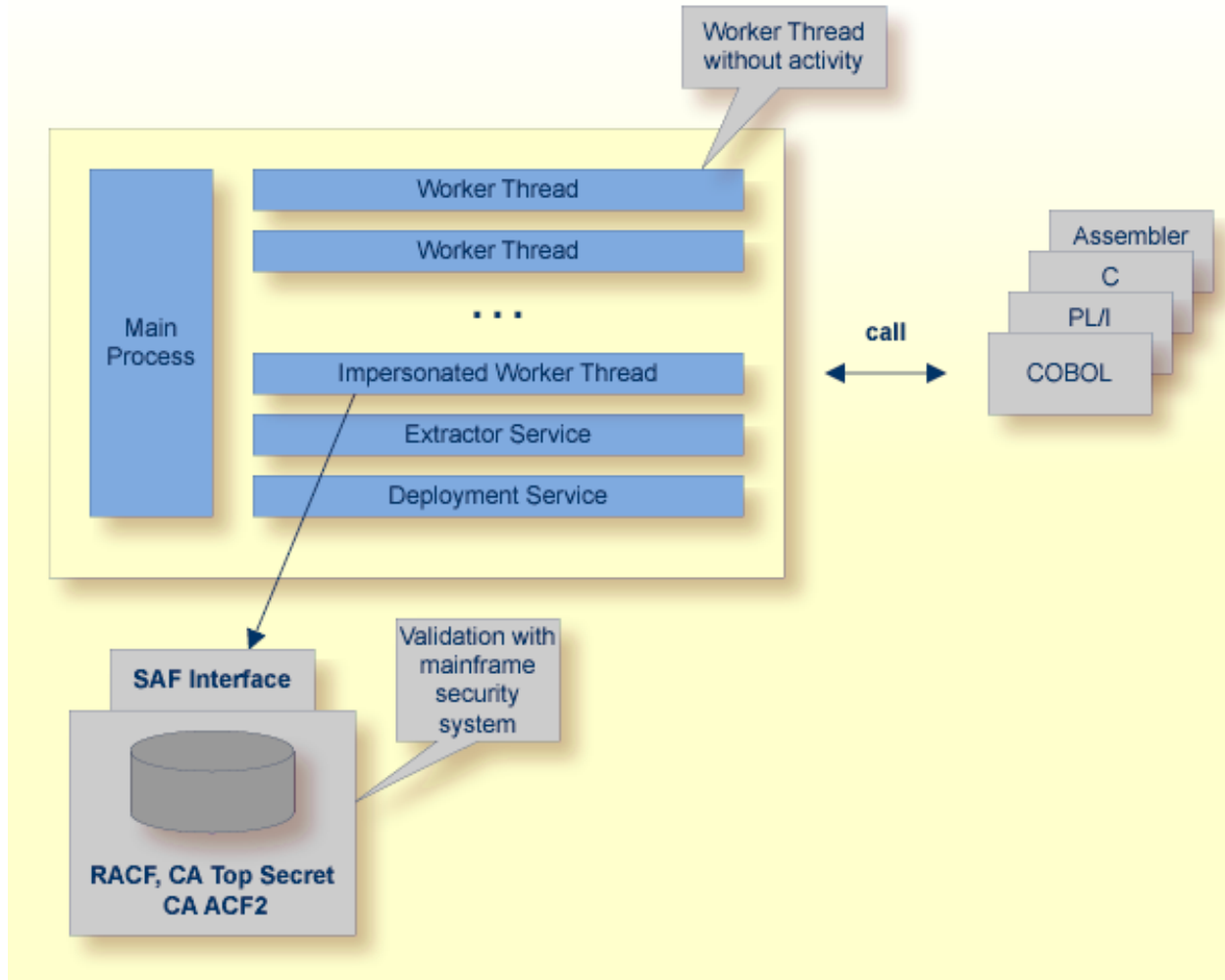


Deployment Service

The Deployment Service allows you to deploy server-side mapping files (Designer files with extension .svm) interactively using the *Server Mapping Deployment Wizard*. On the RPC server side, the server-side mapping files are stored in a server-side mapping container (VSAM file). See [Server-side Mapping Files in the RPC Server](#) and [Deployment Service](#) for configuration information.



Impersonation



The RPC Server for Batch can be configured to execute the RPC request impersonated under the RPC client user ID. This means that for the request execution, the worker thread gets the identity of the RPC client. This is necessary when accessing (security) protected data sets, for example with the *Extractor Service*. The way authentication is carried out can be controlled by the RPC parameter `impersonation`.

- For `impersonation` value `AUTO`, the RPC Server for Batch does not validate RPC passwords, so you have to make sure the RPC client is correctly authenticated, either by using a secure EntireX Broker (validation must be against the correct mainframe security repository where z/OS user IDs are defined) or with your own security implementation.
- For `impersonation` value `YES`, the RPC Server for Batch uses the RPC user ID and RPC password sent by the calling RPC client for authentication and impersonation of the client. This means

that the RPC server validates the RPC password or - if a long RPC password is sent - as a RACF password phrase.

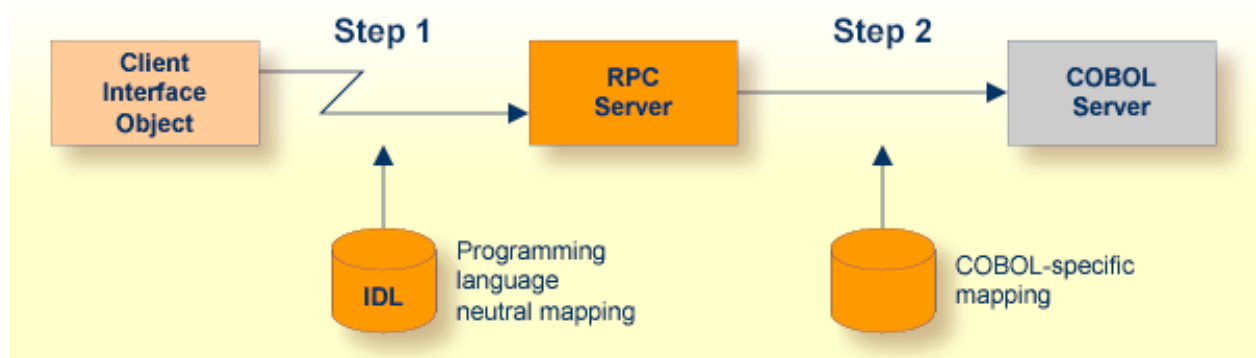
The picture above shows the configuration `impersonation=yes`.

The lifetime of an impersonated task starts when an open request for an RPC conversation or a non-conversational RPC request is received. It ends when the RPC conversation stops (after a commit operation or timeout) or when the non-conversational RPC request has been performed.

Usage of Server Mapping Files

There are many situations where the RPC Server for Batch requires a server mapping file to correctly support special COBOL syntax such as `REDEFINES`, `SIGN LEADING` and `OCCURS DEPENDING ON` clauses, `LEVEL-88` fields, etc.

Server mapping files contain COBOL-specific mapping information that is not included in the IDL file, but is needed to successfully call the COBOL server program.



The RPC server marshals the data in a two-step process: the RPC request coming from the RPC client (Step 1) is completed with COBOL-specific mapping information taken from the server mapping file (Step 2). In this way the COBOL server can be called as expected.

The server mapping files are retrieved as a result of the IDL Extractor for COBOL extraction process and the COBOL Wrapper if a COBOL server is generated. See *When is a Server Mapping File Required?*

There are *server-side* mapping files (*Software AG Designer* files with extension `.svm`) and *client-side* mapping files (*Designer* files with extension `.cvm`). See *Server Mapping Files for COBOL* and *How to Set the Type of Server Mapping Files*.

If you are using server-side mapping files, you need to customize the server-side mapping container with parameter `svm`. See [Configuring the RPC Server](#).



Note: Server mapping files are used for COBOL only.

3 Administering the RPC Server for Batch

- Customizing the RPC Server 14
- Configuring the RPC Server 16
- Locating and Calling the Target Server 27
- Using SSL/TLS with the RPC Server 29
- Starting the RPC Server 32
- Stopping the RPC Server 32
- Activating Tracing for the RPC Server 32

The EntireX RPC Server for z/OS Batch allows standard RPC clients to communicate with RPC servers on the operating system z/OS running in batch mode. It supports the programming languages COBOL, PL/I and C and works together with the *COBOL Wrapper* and *IDL Extractor for COBOL*.

Customizing the RPC Server

The following elements are used for setting up the RPC Server for Batch:

- [Configuration File](#)
- [IBM LE Runtime Options](#)
- [Started Task JCL](#)

Configuration File

The name of the delivered example configuration file is CONFIG (see source library EXP105.SRCE). The configuration file is specified as a DD definition with a user-defined DD name in the [Started Task JCL](#). The configuration file contains the configuration for the RPC Server for Batch. The following settings are important:

- connection information such as broker ID, server address (class, name, service)
- location and usage of server-side mapping container, see [Usage of Server Mapping Files](#)
- scalability parameters
- trace settings
- etc.

For more information see [Configuring the RPC Server](#).

IBM LE Runtime Options

Depending on the feature the RPC Server for Batch needs to support (see table below) additional runtime options for IBM's Language Environment need to be set. For a full description of LE runtime options, see [z/OS V1R4.0 Lang Env Prog Guide](#).

Feature	LE Runtime Options	Description
Trap abends of called RPC server programs	ABTERMENC(RETCODE) ⁽¹⁾	Required to also trap the LE abends within a server program.
Level of information if called RPC server program terminates by unhandled condition	TERMTHDACT(UADUMP) ⁽¹⁾	Forces a U4039 system dump for abends not trapped by the server.

Feature	LE Runtime Options	Description
Call RPC server programs with AMODE 24 as well	ALL31(OFF),STACK(,,BELOW)	If not specified, AMODE 31 is supported.



Note: ⁽¹⁾ Set internally by the RPC Server for Batch and cannot be changed.

There are various ways to specify LE runtime options, for example during installation; using JCL; using CSECT CEEUOPT (for application-specific LE runtime options) linked to the RPC Server; etc. We recommend you use the IBM standard approach with CEEOPTS DD statement in the started task JCL. See [Started Task JCL](#) for this purpose. Add the following lines to your started task JCL:

```
//...
//CEEOPTS DD *
ALL31(OFF),STACK(,,BELOW)
/*
//..
```

The example above uses an in-stream data set to configure ALL31(OFF),STACK(,,BELOW) to allow calling of 24-bit and 31-bit programs and configure RPTOPTS(ON) to list all used LE runtime options to SYSOUT.

Started Task JCL

The name of the started task is EXPSRVB (see EntireX job library EXX105.JOBS). The started task contains the following:

- the target server libraries of the called COBOL or PL/I server
- the configuration file used; see [Configuration File](#); specified as a DD definition with a user-defined DD name as RPC server startup argument CFG:

```
CFG=DD:ddname
```

Example using the DD name CONFIG:

```
CFG=DD:CONFIG
```

- LE runtime options used; see [IBM LE Runtime Options](#)
- etc.

Configuring the RPC Server

The following rules apply:

- In the configuration file:
 - Comments must be on a separate line.
 - Comment lines can begin with '*', '/' and ';'.
 - Empty lines are ignored.
 - Headings in square brackets [<topic>] are ignored.
 - Keywords are not case-sensitive.
- Underscored letters in a parameter indicate the minimum number of letters that can be used for an abbreviated command.

For example, in `brokerid=localhost`, `brok` is the minimum number of letters that can be used as an abbreviation, that is, the commands/parameters `broker=localhost` and `brok=localhost` are equivalents.

Parameter	Default	Values	Req/Opt
<code>brokerid</code>	<code>localhost</code>	Broker ID used by the server. See <i>Using the Broker ID in Applications</i> . Example: <code>brokerid=myhost.com:1971</code>	R
<code>ceeoptions</code>		Allows you to change IBM's LE runtime options. This parameter is deprecated. See <i>IBM LE Runtime Options</i> for how to set the LE runtime options.	O
<code>class</code>	<code>RPC</code>	Server class part of the server address used by the server. The server address must be defined as a service in the broker attribute file (see <i>Service-specific Attributes</i>). Case-sensitive, up to 32 characters. Corresponds to <code>CLASS</code> . Example: <code>class=MyRPC</code>	R
<code>codepage</code>	<code>no codepage transferred</code>	The codepage tells the broker the encoding of the data. The application must ensure the encoding of the data matches the codepage. The RPC server itself does not convert your application data. The application's data is shipped and received as given. Often, the codepage must also match the encoding used in the RPC server environment for file and	O

Parameter	Default	Values	Req/ Opt
		<p>terminal IO, otherwise unpredictable results may occur.</p> <p>By default, no codepage is transferred to the broker. It is assumed the broker's locale string defaults match. See <i>Locale String Mapping</i> If they do not match, provide the codepage here. Example:</p> <pre>codepage=ibm-273</pre> <p>Enable character conversion in the broker by setting the service-specific attribute <code>CONVERSION</code> to "SAGTRPC". See also <i>Configuring ICU Conversion</i> under <i>Configuring Broker for Internationalization</i> in the platform-specific Administration documentation. More information can be found under <i>Internationalization with EntireX</i>.</p>	
<code>compresslevel</code>	N	<p>Enforce compression when data is transferred between broker and server. See <i>Data Compression in EntireX Broker</i>.</p> <pre>compresslevel= 0 1 2 3 4 5 6 7 8 9 Y N</pre> <p>0-9 0=no compression 9=max. compression</p> <p>N No compression. Y Compression level 6.</p> <p>Example: <code>compresslevel=6</code></p>	O
<code>deployment</code>	NO	<p>Activates the deployment service, see Deployment Service. Required to use the Server Mapping Deployment Wizard. See <i>Server Mapping Deployment Wizard</i> in the Designer documentation.</p> <p>YES Activates the deployment service. The RPC server registers the deployment service in the broker.</p> <p>NO The deployment service is deactivated. The RPC server does not register the deployment service in the broker.</p> <p>Example: <code>deployment=yes</code></p>	O

Parameter	Default	Values	Req/Opt				
<u>etblnk</u>	BROKER	<p>Define the broker stub to be used. See <i>Administering Broker Stubs</i> for available stubs.</p> <p>Example: etblnk=broker</p>	O				
<u>extractor</u>	NO	<p>The extractor service is a prerequisite for remote extractions. See <i>Extractor Service</i>.</p> <p>extractor=YES <u>NO</u></p> <p>Example: extractor=yes</p>	O				
<u>impersonation</u>	NO	<p>Defines if RPC requests are executed under the RPC user ID of the calling RPC client.</p> <ul style="list-style-type: none"> ■ For how to send the RPC user ID/password pair from an RPC client, see <i>Using the Broker and RPC User ID/Password</i> (.NET Wrapper Java Wrapper C Wrapper PL/I Wrapper DCOM Wrapper Web Services Wrapper IDL Tester Listener for XML/SOAP Listener for IBM MQ). ■ For the COBOL Wrapper, refer to <i>Using Broker Logon and Logoff</i> and <i>Using RPC Authentication (Natural Security, Impersonation, Integration Server)</i>. ■ For non-RPC clients, see <i>Using the Broker and RPC User ID/Password</i> under <i>EntireX XML Tester</i> in the XML/SOAP Wrapper documentation. <p>Depending on settings, different levels of checks are done prior to RPC server execution. See also <i>Impersonation</i>.</p> <p>impersonation= <u>NO</u> YES AUTO [, <u>sameuser</u> , anyuser]</p> <table border="1" style="width: 100%; border-collapse: collapse;"> <tr> <td style="width: 15%; text-align: center;">NO</td> <td>The RPC request is executed anonymously, which means the user ID of the calling RPC client is not used. RPC requests are executed under the user ID of the RPC server.</td> </tr> <tr> <td style="width: 15%; text-align: center;">YES</td> <td>The RPC request runs impersonated under the supplied <i>RPC client user ID</i>. The RPC Server for Batch validates the <i>RPC client user ID/password</i> pair against the mainframe security repository.</td> </tr> </table>	NO	The RPC request is executed anonymously, which means the user ID of the calling RPC client is not used. RPC requests are executed under the user ID of the RPC server.	YES	The RPC request runs impersonated under the supplied <i>RPC client user ID</i> . The RPC Server for Batch validates the <i>RPC client user ID/password</i> pair against the mainframe security repository.	O
NO	The RPC request is executed anonymously, which means the user ID of the calling RPC client is not used. RPC requests are executed under the user ID of the RPC server.						
YES	The RPC request runs impersonated under the supplied <i>RPC client user ID</i> . The RPC Server for Batch validates the <i>RPC client user ID/password</i> pair against the mainframe security repository.						

Parameter	Default	Values	Req/ Opt						
		<table border="1"> <tr> <td data-bbox="810 275 948 1041">AUTO</td> <td data-bbox="948 275 1417 1041"> <p>Same as option YES above, except that no password validation is performed, that is, the calling RPC client is treated as already authenticated. For this setting, make sure the RPC client is correctly authenticated; use either</p> <ul style="list-style-type: none"> ■ a secure broker (validation must be against the correct mainframe security repository where the user IDs are defined) and option <code>sameuser</code> or ■ your own security implementation (option <code>anyuser</code> is supported for compatibility reasons if you need different broker and server user IDs - the customer-written security implementation must validate the calling RPC client using the <i>RPC client user ID</i>) </td> </tr> <tr> <td data-bbox="948 1041 1170 1329">sameuser</td> <td data-bbox="1170 1041 1417 1329">The RPC Server for Batch checks whether the <i>broker client user ID</i> matches the <i>RPC client user ID</i>. This is the default if AUTO is used.</td> </tr> <tr> <td data-bbox="948 1329 1170 1514">anyuser</td> <td data-bbox="1170 1329 1417 1514">The <i>RPC client user ID</i> is used for impersonation. The <i>broker client user ID</i> is ignored.</td> </tr> </table> <p>Example: <code>impersonation=auto,anyuser</code></p> <p>Using impersonation requires additional installation steps. See <i>Using z/OS Privileged Services</i>.</p>	AUTO	<p>Same as option YES above, except that no password validation is performed, that is, the calling RPC client is treated as already authenticated. For this setting, make sure the RPC client is correctly authenticated; use either</p> <ul style="list-style-type: none"> ■ a secure broker (validation must be against the correct mainframe security repository where the user IDs are defined) and option <code>sameuser</code> or ■ your own security implementation (option <code>anyuser</code> is supported for compatibility reasons if you need different broker and server user IDs - the customer-written security implementation must validate the calling RPC client using the <i>RPC client user ID</i>) 	sameuser	The RPC Server for Batch checks whether the <i>broker client user ID</i> matches the <i>RPC client user ID</i> . This is the default if AUTO is used.	anyuser	The <i>RPC client user ID</i> is used for impersonation. The <i>broker client user ID</i> is ignored.	
AUTO	<p>Same as option YES above, except that no password validation is performed, that is, the calling RPC client is treated as already authenticated. For this setting, make sure the RPC client is correctly authenticated; use either</p> <ul style="list-style-type: none"> ■ a secure broker (validation must be against the correct mainframe security repository where the user IDs are defined) and option <code>sameuser</code> or ■ your own security implementation (option <code>anyuser</code> is supported for compatibility reasons if you need different broker and server user IDs - the customer-written security implementation must validate the calling RPC client using the <i>RPC client user ID</i>) 								
sameuser	The RPC Server for Batch checks whether the <i>broker client user ID</i> matches the <i>RPC client user ID</i> . This is the default if AUTO is used.								
anyuser	The <i>RPC client user ID</i> is used for impersonation. The <i>broker client user ID</i> is ignored.								
<code>library</code>	no default	<code>library = search_logic [- library]</code> where <code>search_logic</code> is one of <code>FIX(dllname) PREFIX(prefix) PREFIX(), and</code>	O						

Parameter	Default	Values	Req/ Opt
		<p><i>library</i> can be repeated up to four times, that is, five entries are possible.</p> <p>This parameter applies to programming language C only. Do not set if other programming languages for RPC server are used.</p> <p><code>FIX(<i>dllname</i>)</code> The IDL library name coming from the RPC client is ignored, thus long IDL library names can be used. You have to define the DLL names for all client interface objects and RPC servers.</p> <p><code>PREFIX(<i>prefix</i>)</code> The IDL library name coming from the RPC client is used to form the DLL name. As <i>prefix</i> you can define any character. If an RPC client sends, for example, "SYSTEM" as the IDL library name and "D" is defined as <i>prefix</i>, the DLL name derived is "DSYSTEM". This configuration restricts the IDL library names to max. 7 characters.</p> <p><code>PREFIX()</code> The IDL library name coming from the RPC client is used as DLL name. This configuration restricts the IDL library names to max. 8 characters.</p> <p>Example PREFIX configuration (this configuration matches the standard names produced by the C Wrapper: <code>library=PREFIX(D)-PREFIX()</code></p> <p>Example FIX configuration: <code>library=FIX(MYSTUBS)-FIX(MYRPCS)</code></p>	
<u>logon</u>	YES	Execute broker functions LOGON/LOGOFF in worker threads. Must match the setting of the broker attribute AUTOLOGON. Reliable RPC requires logon set to YES. See <i>Reliable RPC</i> .	O

Parameter	Default	Values	Req/ Opt						
		<p>NO No logon/logoff functions are executed. YES Logon/logoff functions are executed.</p> <p>Example: logon=no</p>							
<code>marshalling</code>	COBOL	<p>The RPC Server for Batch can be configured to support either COBOL, PL/I or C. See also Locating and Calling the Target Server.</p> <p><code>marshalling=(LANGUAGE=COBOL PLI C)</code></p> <table border="1"> <tr> <td>COBOL</td> <td>Server supports COBOL. The COBOL servers are called directly without a server interface object. So-called server mapping files are used to call the COBOL server correctly if one is available. See Usage of Server Mapping Files.</td> </tr> <tr> <td>PLI</td> <td>Server supports PL/I. See prerequisites for PL/I Wrapper.</td> </tr> <tr> <td>C</td> <td>Server supports C. The modules are called using a server interface object built with the C Wrapper.</td> </tr> </table>	COBOL	Server supports COBOL. The COBOL servers are called directly without a server interface object. So-called server mapping files are used to call the COBOL server correctly if one is available. See Usage of Server Mapping Files .	PLI	Server supports PL/I. See prerequisites for PL/I Wrapper.	C	Server supports C. The modules are called using a server interface object built with the C Wrapper.	O
COBOL	Server supports COBOL. The COBOL servers are called directly without a server interface object. So-called server mapping files are used to call the COBOL server correctly if one is available. See Usage of Server Mapping Files .								
PLI	Server supports PL/I. See prerequisites for PL/I Wrapper.								
C	Server supports C. The modules are called using a server interface object built with the C Wrapper.								
<code>password</code>	no default	<p>The password for secured access to the broker. If possible (write access) the password is encrypted and written to parameter <code>password.e</code>. The parameter <code>password</code> is removed. To change the password, add the parameter <code>password</code> with the new password as value. If the Configuration File is an inline data set in the Started Task JCL, password encryption does not take place.</p> <p>Example: <code>password=MyPwd</code></p>	O						
<code>restartcycles</code>	15	<p>Number of restart attempts if the broker is not available. This can be used to keep the RPC Server for Batch running while the broker is down for a short time. A restart cycle will be repeated every 60 seconds.</p> <p>Note: Internally, the server waits in periods of 10 seconds (performing six times more cycles), which you can see in the server output.</p>	O						

Parameter	Default	Values	Req/Opt
		<p>When the number of specified cycles is reached and a connection to the broker is not possible, the RPC Server for Batch stops.</p> <p>Example: restartcycles=30</p> <p>The server waits up to 30 minutes (30*6*10 seconds) before it terminates due to a missing broker connection.</p>	
<u>return_code</u>	NO	<p>Enable application-specific errors. return_code=(NO YES)</p> <p>NO No tests of COBOL special register RETURN-CODE for application-provided error.</p> <p>YES After execution of the RPC server, tests COBOL special register RETURN_CODE for application provided error. See Returning Application Errors.</p> <p>Example: return_code=yes</p>	O
<u>runoption</u>	no default	<p>This parameter is for special purposes. It provides the RPC Server for Batch with additional information. The runoptions are normally set to meet the platform's requirements. Set this parameter only if a support representative provides you with an option and asks you to do so. The parameter can be defined multiple times.</p> <p>Example: runoption=<option> runoption=<option></p>	O
<u>servername</u>	SRV1	<p>Server name part of the server address used by the server. The server address must be defined as a service in the broker attribute file. See <i>Service-specific Attributes</i>. Case-sensitive, up to 32 characters. Corresponds to SERVER of the broker attribute file.</p> <p>Example: servername=mySrv</p>	R
<u>service</u>	CALLNAT	<p>Service part of the server address used by the server. The server address must be defined as a service in the broker attribute file. See <i>Service-specific Attributes</i>. Case-sensitive, up to 32 characters. Corresponds to SERVICE attribute of the broker attribute file.</p>	R

Parameter	Default	Values	Req/ Opt
		Example: service=MYSERVICE	
<u>svm</u>	ERXSVM	<p>Usage and location of server-side mapping files; see Server-side Mapping Files in the RPC Server. If no <code>svm</code> parameter is given, the RPC server tries to open the server-side mapping container using DD name <code>ERXSVM</code>. If this DD name is not available, no server-side mapping files are used. If you use server-side mapping files, the server-side mapping container must be installed and configured; see <i>Installing the Server-side Mapping Container for an RPC Server for Batch (Optional)</i> under <i>Installing the EntireX RPC Servers under z/OS</i>. There are also client-side mapping files that do not require configuration here; see <i>Server Mapping Files in the Designer</i> in the Designer documentation.</p> <p><code>svm = no ddname</code></p> <p><code>no</code> No server-side mapping files are used.</p> <p><code>ddname</code> DD name of the server-side mapping container in the started task JCL of the RPC Server for Batch.</p> <p>Example: <code>svm=MYSVM</code></p> <p>For the example above, define the DD name <code>MYSVM</code> in the started task JCL of the RPC Server for Batch (see Started Task JCL) as</p> <pre>//MYSVM DD DISP=SHR,DSN=<svm.cluster></pre> <p>See also Usage of Server Mapping Files.</p>	O
<u>timeout</u>	60	<p>Timeout in seconds, used by the server to wait for broker requests. See broker ACI control block field <code>WAIT</code> for more information. Also influences restartcycles and worker model <code>DYNAMIC</code>.</p> <p>Example: <code>timeout=300</code></p>	O
<u>tracedestination</u>	DD:ERXTRACE	<p>The name of the destination file for trace output. See also Activating Tracing for the RPC Server.</p> <p><code>tracedestination=DD:ddname</code>, where <code>ddname</code> is the name of the trace file.</p>	O

Parameter	Default	Values	Req/ Opt
		<p>Example: tracedestination=DD:MYTRACE</p> <p>The DD name MYTRACE must be defined in the started task of the RPC Server for Batch (see Started Task JCL):</p> <pre>//MYTRACE DD DISP=SHR,DSN=<rpctrace-file></pre>	
tracelevel	None	<p>Trace level for the server. See also Activating Tracing for the RPC Server.</p> <pre>tracelevel = None Standard Advanced Support</pre> <p>None No trace output. Standard For minimal trace output. Advanced For detailed trace output. Support This trace level is for support diagnostics and should only be switched on when requested by Software AG support.</p> <p>Example: tracelevel=standard</p>	O
traceoption	None	<p>Additional trace option if trace is active. See also Activating Tracing for the RPC Server.</p> <p>None No additional trace options. STUBLOG If tracelevel is Advanced or Support, the trace additionally activates the broker stub log. NOTRUNC Normally if a data buffer larger than 8 KB is traced, the buffer trace is truncated. Set this option to write the full amount of data without truncation.</p> <p>Note: This can increase the amount of trace output data dramatically if you transfer large data buffers.</p> <p>Example: traceoption=(STUBLOG, NOTRUNC)</p>	O

Parameter	Default	Values	Req/Opt						
<code>userid</code>	ERX-SRV	<p>The user ID for access to the broker. The default ERX-SRV will be used if this parameter is omitted or specified without a value: "userid".</p> <p>Example: userid=MyUid</p>	O						
<code>workermodel</code>	SCALE,1,3,slowshrink	<p>The RPC Server for Batch can be configured to</p> <ul style="list-style-type: none"> use a DYNAMIC worker model, which adjusts the number of worker threads to the current number of client requests: <pre>workermodel=(SCALE,from,thru [,slowshrink ← fastshrink])</pre> use a FIXED number of worker threads: <pre>workermodel=(FIXED,number)</pre> <table border="1"> <tr> <td>FIXED</td> <td>A fixed <i>number</i> of worker threads is used by the RPC Server for Batch.</td> </tr> <tr> <td>SCALE</td> <td>The number of worker threads is adjusted to the current number of client requests. With the <i>from</i> value, the minimum number of active worker threads can be set. This allows you to define a certain number of threads - not used by the currently executing RPC request - to wait for new RPC client requests to process. In this way the RPC server is ready to handle many RPC client requests arriving at the same time. The <i>thru</i> value restricts the maximum number of all worker threads concurrently.</td> </tr> <tr> <td>slowshrink</td> <td>Default. The RPC server stops all worker threads not used in the time specified by the <code>timeout</code> parameter, except for the number of workers specified as minimum value.</td> </tr> </table>	FIXED	A fixed <i>number</i> of worker threads is used by the RPC Server for Batch.	SCALE	The number of worker threads is adjusted to the current number of client requests. With the <i>from</i> value, the minimum number of active worker threads can be set. This allows you to define a certain number of threads - not used by the currently executing RPC request - to wait for new RPC client requests to process. In this way the RPC server is ready to handle many RPC client requests arriving at the same time. The <i>thru</i> value restricts the maximum number of all worker threads concurrently.	slowshrink	Default. The RPC server stops all worker threads not used in the time specified by the <code>timeout</code> parameter, except for the number of workers specified as minimum value.	O
FIXED	A fixed <i>number</i> of worker threads is used by the RPC Server for Batch.								
SCALE	The number of worker threads is adjusted to the current number of client requests. With the <i>from</i> value, the minimum number of active worker threads can be set. This allows you to define a certain number of threads - not used by the currently executing RPC request - to wait for new RPC client requests to process. In this way the RPC server is ready to handle many RPC client requests arriving at the same time. The <i>thru</i> value restricts the maximum number of all worker threads concurrently.								
slowshrink	Default. The RPC server stops all worker threads not used in the time specified by the <code>timeout</code> parameter, except for the number of workers specified as minimum value.								

Parameter	Default	Values		Req/ Opt	
			fastshrink	The RPC server stops worker threads immediately as soon as it has finished its conversation, except for the number of workers specified as minimum value.	
		Example: workermodel=(SCALE,2,5)			

Locating and Calling the Target Server

The IDL library and IDL program names that come from the RPC client are used to locate the RPC server. See [library-definition](#) and [program-definition](#) under *Software AG IDL Grammar* in the IDL Editor documentation. This two-level concept (library and program) has to be mapped to the RPC Server for Batch environment. Different mechanisms are used depending on the language:

- COBOL
- PL/I
- C
- Assembler (IBM 370)

COBOL

The approach used to derive the z/OS module name for the RPC server depends on whether server mapping is used or not. See [Usage of Server Mapping Files](#) for an introduction.

1. If the RPC client sends a client-side type of server mapping with the RPC request, this server mapping is used first.
2. If no server mapping is available from step 1 above, and if server-side type of server mapping is used, the IDL library and IDL program names are used to form a key to locate the server mapping in the server-side mapping container. If a server mapping is found, this is then used.
3. If a server mapping is available from step 1 or 2 above, the z/OS module name of the RPC server is derived from this mapping. In this case the IDL program name can be different to the z/OS module name if it is renamed during wrapping process (see *Customize Automatically Generated Server Names*) or during the extraction process in the *COBOL Mapping Editor*.
4. If no server mapping is used at all, the IDL program name is used as the z/OS module name of the RPC server (the IDL library name is ignored).

» To use the RPC Server for Batch with COBOL

1. Make sure that all z/OS modules called as RPC servers
 - are compiled with IBM's Language Environment (see [z/OS V1R4.0 Lang Env Prog Guide](#) for more information)
 - use COBOL calling conventions
 - can be called dynamically ("fetched") from any Language Environment program
 - are accessible through the RPC Server for Batch started task JCL STEPLIB concatenation. See [Started Task JCL](#).
2. Configure the parameter [marshalling](#) for COBOL, for example:

```
marshalling=COBOL
```

- 3 Configure the parameter `svm` depending on whether server-side mapping files are used or not. See [Usage of Server Mapping Files](#).

See also [Scenario I: Calling an Existing COBOL Server](#) or [Scenario II: Writing a New COBOL Server](#).

PL/I

There is a simple mechanism to derive the RPC server z/OS module name:

- The IDL program name is used as the z/OS module name.
- The IDL library name is not used.

➤ To use the RPC Server for Batch with PL/I

- 1 Make sure that all z/OS modules called as RPC servers
 - are compiled with IBM's Language Environment (see [z/OS V1R4.0 Lang Env Prog Guide](#) for more information)
 - use PL/I calling conventions
 - can be called dynamically ("fetched") from any Language Environment program
 - are accessible through the RPC Server for Batch started task JCL STEPLIB concatenation. See [Started Task JCL](#).
- 2 Configure the parameter `marshalling` for PL/I, for example `marshalling=PLI`.

See also [Scenario III: Calling an Existing PL/I Server](#) or [Scenario IV: Writing a New PL/I Server](#).

C

The approaches needed to derive the dynamic-link library (DLL) names for the RPC server are more complex for C, for the following reasons:

- the limitation of 8 characters per (physical) member (DLL name in PDSE)
- the maximum length of 128 characters per IDL library name (see [Rules for Coding Library, Library Alias, Program, Program Alias and Structure Names](#) under [Software AG IDL File](#)).

Either you restrict yourself in short IDL library names (up to 8 characters) and use the flexible `PREFIX` configuration, or, if you need independence from the IDL library length and names, use the `FIX` configuration. The parameter `library` is used for this purpose.

➤ To use the RPC Server for Batch with C

- 1 Make sure all dynamic-link libraries (DLLs) called as RPC servers and client interface objects are accessible through the RPC Server for Batch started task JCL STEPLIB concatenation. See *Started Task JCL*.
- 2 Configure the parameter `marshalling` for C, for example `marshalling=C`.
- 3 Configure the parameter `library` either with the `FIX` configuration or `PREFIX` configuration, depending on how you have built your DLLs. See *Using the C Wrapper for the Server Side (z/OS, UNIX, Windows, BS2000, IBM i)*.

See also [Scenario V: Writing a New C Server](#).

Assembler (IBM 370)

There is a simple mechanism to derive the RPC server z/OS module name:

- The IDL program name is used as the z/OS module name
- The IDL library name is not used.

➤ To use the RPC Server for Batch with Assembler

- Make sure all z/OS modules called as RPC Servers
 - are accessible through the RPC Server for Batch started task JCL STEPLIB concatenation. See *Started Task JCL*.
 - Use PL/I or COBOL calling conventions. Configure the parameter `marshalling` for PL/I or COBOL.

See also [Scenario VI: Writing a New Assembler Server](#).

Using SSL/TLS with the RPC Server

RPC servers can use Secure Sockets Layer/Transport Layer Security (SSL/TLS) as the transport medium. The term “SSL” in this section refers to both SSL and TLS. RPC-based servers are always SSL clients. The SSL server can be either the EntireX Broker, Broker SSL Agent, or Direct RPC in webMethods Integration Server (IS inbound). For an introduction see *SSL/TLS and Certificates with EntireX* in the Platform-independent Administration documentation.

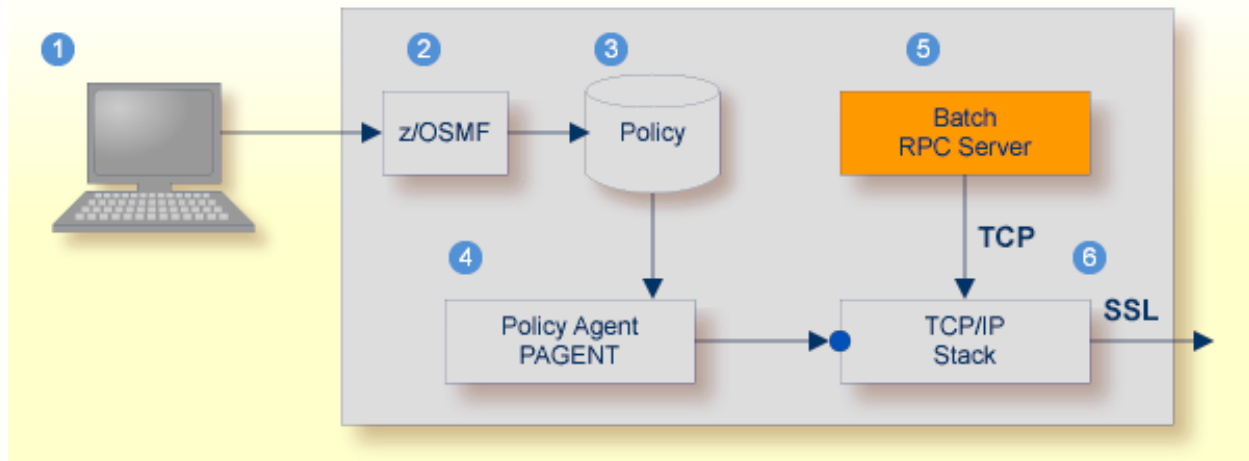
SSL delivered on a z/OS mainframe will typically use the Resource Access Control Facility (RACF) as the certificate authority (CA). Certificates managed by RACF can only be accessed through the RACF keyring container. A keyring is a collection of certificates that identify a networking trust

relationship (also called a trust policy). In an SSL client/server network environment, entities identify themselves using digital certificates called through a keyring. Server applications on z/OS that wish to establish network connections to other entities can use keyrings and their certificate contents to determine the trustworthiness of the client or peer entity. Note that certificates can belong to more than one keyring, and you can assign different users to the same keyring. Because of the way RACF internally references certificates, they must be uniquely identifiable by owner and label, and also unique by serial number plus data set name (DSN).

For establishing an SSL connection on z/OS, IBM's Application Transparent Transport Layer Security (AT-TLS) can be used, where the establishment of the SSL connection is pushed down the stack into the TCP layer.

Using IBM's Application Transparent Transport Layer Security (AT-TLS)

Configure the AT-TLS rules for the policy agent (PAGENT) ⁴ using an appropriate client ¹ and the z/OS Management Facility (z/OSMF) ². Together with SSL parameters (to provide certificates stored in z/OS as RACF keyrings) define AT-TLS rules, for example by using the application ⁵ job name and remote TCP port number. If the rules match, the TCP connection is turned into an SSL connection ⁶. Refer to your IBM documentation for more information, for example the IBM Redbook *Communications Server for z/OS VxRy TCP/IP Implementation Volume 4: Security and Policy-Based Networking*.



- 1 Client to interact with z/OS Management Facility (z/OSMF).
- 2 AT-TLS rules are defined with z/OSMF policy management.
- 3 Policy Repository with AT-TLS rules stored as z/OS files.
- 4 Policy Agent, MVS task PAGENT, provides AT-TLS rules through a policy enforcement point (PEP) to TCP/IP stack.

- 5 Application using TCP connection.
- 6 If AT-TLS rules match, the TCP connection is turned into an SSL connection.

 **Notes:**

1. The client 1 may vary per operating system, for example a Web browser for z/OS 2.1.
2. z/OSMF 2 includes other administration and management tasks in addition to policy management.
3. Policy Management 3 includes other rules, such as IP filtering, network address translation etc.

» **To set up SSL with AT-TLS**

- 1 To operate with SSL, certificates need to be provided and maintained. Depending on the platform, Software AG provides default certificates, but we strongly recommend that you create your own. See *SSL/TLS Sample Certificates Delivered with EntireX* in the EntireX Security documentation.
- 2 Set up the RPC Server for Batch for a TCP/IP connection. On mainframe platforms, use *Transport-method-style Broker ID*. Example:

```
ETB024:1699:TCP
```

- 3 Configure AT-TLS to turn the TCP/IP connection to an SSL connection, using a client to interact with the z/OS Management Facility (z/OSMF). The outcome of this configuration is a Policy Repository with AT-TLS rules stored as z/OS files. This file is the configuration file for the Policy Agent, MVS task PAGENT.
- 4 Make sure the SSL server to which the RPC Server for Batch connects is prepared for SSL connections as well. The SSL server can be EntireX Broker, Broker SSL Agent, or Direct RPC in webMethods Integration Server (IS inbound). See:
 - *Running Broker with SSL/TLS Transport* in the platform-specific Administration documentation
 - *Broker SSL Agent* in the UNIX and Windows Administration documentation
 - *Support for SSL/TLS* in the EntireX Adapter documentation (for Direct RPC)

Starting the RPC Server

> To start the RPC Server for Batch

- 1 Modify the member EXPSRVB (see EntireX job library EXX105.JOBS) according to your system requirements and copy the started task JCL to your system PROCLIB concatenation. See [Started Task JCL](#).
- 2 Modify the server parameters [Configuration File](#) according to your system requirement. For details, see [Configuring the RPC Server](#).
- 3 Start the task manually with

```
/s EXPSRVB
```

Or:

Add the task to your system automation tool(s)

Stopping the RPC Server

> To stop the RPC Server for Batch

- Use the operator command STOP. Examples:

```
/p EXPSRVB  
/f EXPSRVB,STOP
```

Or:

Add the STOP command to your system automation tool(s).

Activating Tracing for the RPC Server

> To switch on tracing for the RPC Server for Batch

- 1 Set the parameters `tracelevel`, `traceoption` and `tracedestination`. See [Configuring the RPC Server](#).
- 2 Start the RPC Server for Batch. See [Starting the RPC Server](#).
- 3 Temporarily change the trace level with the operator command

```
F EXPSRVB,TRACELEVEL=tracelevel,
```

for valid *tracelevel* values, see [tracelevel](#).

The TRACELEVEL command without any value will report the currently active trace options, for example:

```
F EXPSRVB,TRACELEVEL
```

might reply with the operator message

```
Tracelevel=0 TraceFile=DD:ERXTRACE
```

➤ **To switch off tracing**

- Set the [tracelevel](#) parameter to None.

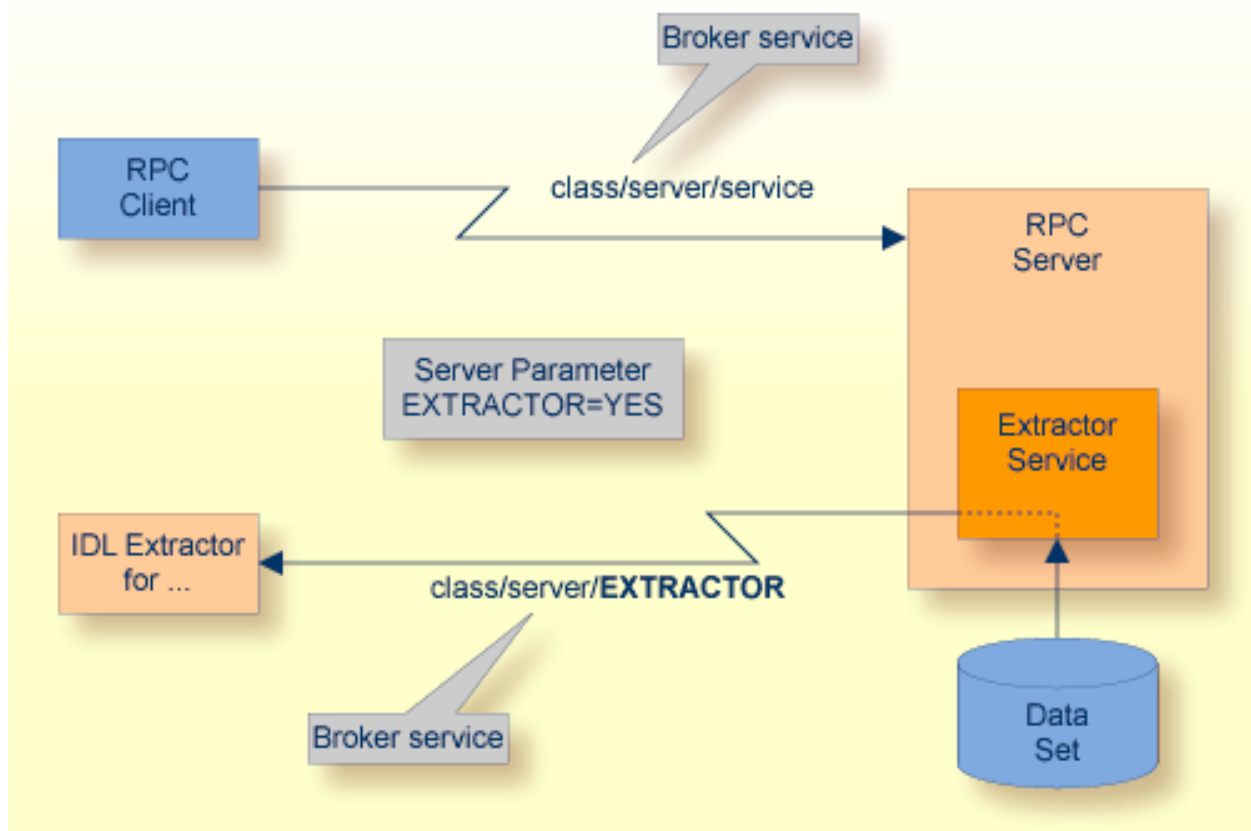
4 **Extractor Service**

- Introduction 36
- Scope 37
- CA Librarian Support 37
- Enabling the Extractor Service 38
- Disabling the Extractor Service 38
- Restrictions 39

Introduction

The extractor service

- provides access to PDS data sets and CA Librarian DA master files defined within the z/OS catalog
- provides access to security-protected data sets (protected e.g. by RACF, CA ACF2, CA Top Secret)
- is a built-in service of the RPC server, which can be enabled/disabled by RPC server configuration settings
- depending on the platform where the broker is running, usage can be restricted to certain users or group of users, using EntireX Security; see *Authorization of Client and Server* in the EntireX Security documentation.



Scope

The extractor service is a prerequisite for the

- **IDL Extractor for COBOL**
used together with a remote extractor environment, see *Step 2: Select a COBOL Extractor Environment or Create a New One*.
- **IDL Extractor for PL/I**
used together with an RPC environment, see *RPC Environment Manager* in the IDL Extractor for PL/I documentation

The extractor service uses the same class and server names as defined for the RPC server, and "EXTRACTOR" as the service name, resulting in `class/server/EXTRACTOR` as the broker service. Please note "EXTRACTOR" is a service name reserved by Software AG. See `SERVICE` under *Broker Attributes*.

CA Librarian Support

- Supported Features:
 - Traditional CA Librarian DA master files are supported.
 - Extraction from multiple CA Librarian data sets is possible.
 - CA Librarian archive levels (history) are supported for the COBOL (main) source where the extraction starts.
 - Security RACROUTE is supported.
 - PDS data sets and CA Librarian data sets can be mixed, that is:
 - the COBOL source can reside in a PDS, and some copybooks in CA Librarian, and others in PDS
 - the COBOL source can reside in CA Librarian, and some copybooks in PDS and others in CA Librarian
 - -INC and COBOL COPY statements can be mixed in one source

Enabling the Extractor Service

> To enable the extractor service

- 1 Set the RPC Server for Batch parameter `extractor=yes`. See [extractor](#) under *Configuring the RPC Server*.
- 2 Define in the broker attribute file, under the RPC service, an additional broker service with "EXTRACTOR" as the service name and values for class and server identical to those used for the RPC service. For example, if your RPC service is named

```
CLASS = RPC    SERVER = SRV1    SERVICE = CALLNAT
```

the extractor service requires the following additional service definition in the Broker attribute file:

```
CLASS = RPC    SERVER = SRV1    SERVICE = EXTRACTOR
```

- 3 Optional. If you need to restrict the use of the extractor service to a selected group of users, use EntireX Security and define security rules for the `class/server/EXTRACTOR` broker service. The service name `EXTRACTOR` is a constant.
 - For a z/OS broker, see *Resource Profiles in EntireX Security* in section *EntireX Security under z/OS*.
 - For a UNIX or Windows broker, see *Authorization Rules* in the platform-independent administration documentation.
 - Not applicable to a BS2000 broker.
- 4 Optional. Use the `impersonation` feature of the RPC Server for Batch to enable access to security-protected data sets (protected e.g. by RACF, CA ACF2, CA Top Secret). See [impersonation](#) under *Configuring the RPC Server*.

Disabling the Extractor Service

> To disable the extractor service

- Set the RPC Server for Batch parameter `extractor=no`. See [extractor](#) under *Configuring the RPC Server*. The RPC Server for Batch will not register the extractor service in the broker.

Restrictions

The following restrictions apply to CA Librarian:

- Filtering with programmer and type, as is done by the CA Librarian ELIPS (Extended Librarian Interactive Productivity Services) application, is not supported.
- CA Librarian Wide Record Master Files (PDS/E - PO) are not supported.
- CA Librarian MCD Security is not supported
- CA Librarian member passwords (NOBYPP installations) are not supported
- The optional syntax elements `seq1`, `seq2` and `ARC` of the CA Librarian `-INC module-name[,seq1[,seq2][,ARC={date | Lx | -y}]]` statement are not supported. Therefore CA Librarian archive levels (history) are not supported for COBOL copybooks. It is always the most recent member (last update) that is delivered by the extractor service.

No access is provided to other data sets (e.g. CA Panvalet) or to data sets not defined in the z/OS catalog (e.g. defined in VTOC only).

5 Deployment Service

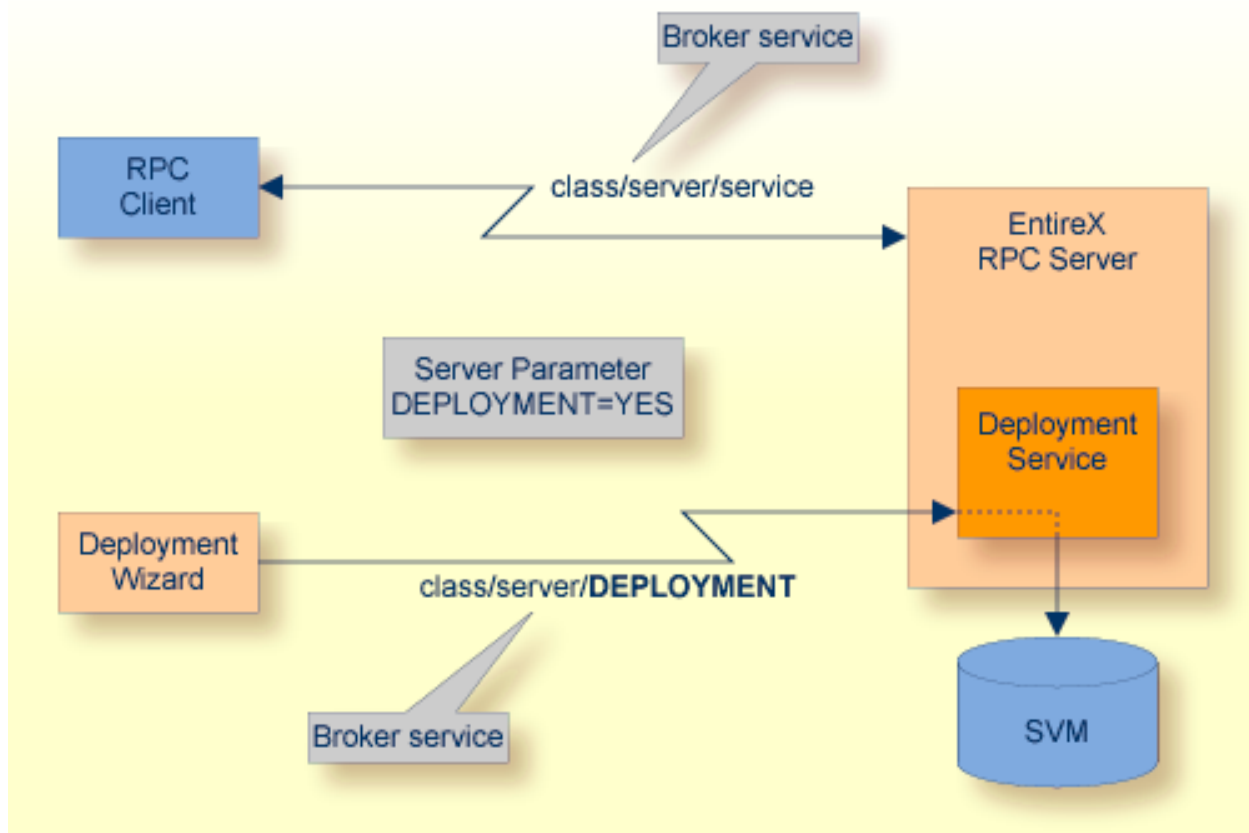
- Introduction 42
- Scope 43
- Enabling the Deployment Service 43
- Disabling the Deployment Service 44

Introduction

The deployment service is the (server-side) counterpart to the deployment wizard; see *Server Mapping Deployment Wizard*. It is a built-in service of the EntireX RPC server, which can be enabled/disabled by EntireX RPC server configuration settings.

Usage can be restricted to certain users or group of users, using EntireX Security; see *Authorization of Client and Server* in the EntireX Security documentation.

You need to configure the deployment service only when server-side mapping files are used. There are also client-side server mapping files that do not need configuration here; see *Server Mapping Files for COBOL* in the Designer documentation.



Scope

The deployment service is used in conjunction with the

- IDL Extractor for COBOL to deploy server-side mapping files with the deployment wizard;
- COBOL Wrapper for RPC server generation to deploy server-side mapping files with the deployment wizard.

See also [Deploying Server-side Mapping Files to the RPC Server](#).

The deployment service uses the same class and server names as defined for the EntireX RPC server, and `DEPLOYMENT` as the service name, resulting in `class/server/DEPLOYMENT` as the broker service. Please note `DEPLOYMENT` is a service name reserved by Software AG. See broker attribute `SERVICE`.

Enabling the Deployment Service

» To enable the deployment service

- 1 For an RPC Server for Batch, the server-side mapping container (VSAM file) must be installed and configured. See *Installing the Server-side Mapping Container for an RPC Server for Batch (Optional)* under *Installing the EntireX RPC Servers under z/OS*.
- 2 Set the RPC server parameter `deployment=yes`. See `deployment` under [Configuring the RPC Server](#).
- 3 Define in the broker attribute file, under the RPC service, an additional broker service with `DEPLOYMENT` as the service name and values for class and server identical to those used for the RPC service. For example, if your RPC service is named

```
CLASS = RPC    SERVER = SRV1    SERVICE = CALLNAT
```

the deployment service requires the following additional service definition in the broker attribute file:

```
CLASS = RPC    SERVER = SRV1    SERVICE = DEPLOYMENT
```

- 4 Optional. If you need to restrict the use of the deployment service to a selected group of users, use EntireX Security and define security rules for the `class/server/DEPLOYMENT` broker service. The service name `DEPLOYMENT` is a constant.
 - For a z/OS broker, see *Resource Profiles in EntireX Security*.

- For a UNIX or Windows broker, see *Authorization Rules*.
- Not applicable to a BS2000 or z/VSE broker.

Disabling the Deployment Service

➤ To disable the deployment service

- Set the RPC Server for Batch parameter `deployment=no`. See [deployment](#) under *Configuring the RPC Server*.

The RPC Server for Batch will not register the deployment service in the broker.

6 Server-side Mapping Files

- Server-side Mapping Files in the RPC Server 46
- Deploying Server-side Mapping Files to the RPC Server 47
- Undeploying Server-side Mapping Files from the RPC Server 48
- Change Management of Server-side Mapping Files 49
- List Deployed Server-side Mapping Files 49
- Check if a Server-side Mapping File Revision has been Deployed 50
- Access Control: Secure Server Mapping File Deployment 50
- Ensure that Deployed Server-side Mapping Files are not Overwritten 50
- Is There a Way to Smoothly Introduce Server-side Mapping Files? 50

Server mapping enables the RPC server to correctly support special COBOL syntax such as `REDEFINES`, `SIGN LEADING` and `OCCURS DEPENDING ON` clauses, `LEVEL-88` fields, etc. If one of these elements is used, the IDL Extractor for COBOL automatically extracts a server mapping file in addition to the IDL file (interface definition language). Also, the COBOL Wrapper may generate a server mapping file for RPC server generation. The server mapping is used at runtime to marshal and unmarshal the RPC data stream. There are client-side mapping files (Designer files with extension `.cvm`) and server-side mapping files (Designer files with extension `.svm`). If you have not used server-side mapping, we recommend you use client-side mapping. See *Server Mapping Files for COBOL* in the Designer documentation.

See also *Source Control of Server Mapping Files* | *Comparing Server Mapping Files* | *When is a Server Mapping File Required?* | *Migrating Server Mapping Files* in the Designer documentation.

Server-side Mapping Files in the RPC Server

Under z/OS, server-side mapping corresponds to lines of Designer files with extension `.svm`. See *Server Mapping Files for COBOL*. The mapping information is stored as records within one VSAM file, the server-side mapping container. This container contains all server-side mapping entries from all Designer files with extension `.svm`. The unique key of the VSAM file file consists of the first 255 bytes of the record: for the type (1 byte), for the IDL library (127 bytes) and for the IDL program (127 bytes).

If *one* server requires a server-side mapping file, you need to provide this to the RPC server:

- Development environments: to deploy new server-side mapping files, see [Deploying Server-side Mapping Files to the RPC Server](#).
- Production environments: provide a server-side mapping container (VSAM file) containing all required server-side mapping files to the RPC server. See configuration parameter `svm`.

If *no* server requires server-side mapping, you can execute the RPC server without server mapping files:

- Development environments: you can disable the deployment service. See [Disabling the Deployment Service](#).
- Production environments: there is no need to provide a server-side mapping container (VSAM file) to the RPC server. See configuration parameter `svm`.

Deploying Server-side Mapping Files to the RPC Server

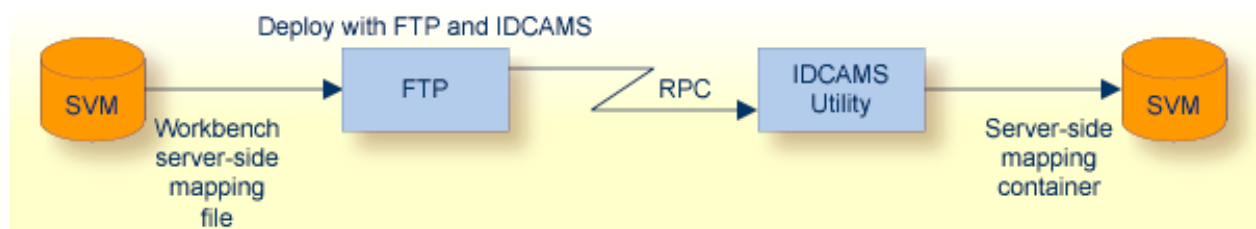
The following approaches are available to deploy a server-side mapping file (Designer file with extension .svm; see *Server Mapping Files for COBOL*):

- Server Mapping Deployment Wizard
- FTP and IDCAMS

➤ To deploy a server-side mapping file with the Server Mapping Deployment Wizard

- 1 Make sure your RPC server is active and that the Deployment Service of the RPC server is properly configured. See [Deployment Service](#).
- 2 From the context menu of your IDL file, choose **COBOL > Deploy/Synchronize Server Mapping** and call the Server Mapping Deployment Wizard. See *Server Mapping Deployment Wizard* in the Designer documentation.

➤ To deploy a server-side mapping file using FTP and IDCAMS



- 1 Make sure the server-side mapping container (VSAM file) is installed. See *Installing the Server-side Mapping Container for an RPC Server for Batch (Optional)* under *Installing the EntireX RPC Servers under z/OS*.
- 2 Allocate a target sequential file on your mainframe.
- 3 Allow write access to the VSAM file mentioned above and usage of IDCAMS tools.
- 4 Transfer the server-side mapping file to the target host, using FTP. You have to switch to text mode and the codepage of the FTP service must be the same as the codepage (locale string) of the RPC server used.
- 5 Install the server mapping contained in the server-side mapping file into the server-side mapping container (VSAM file) with an appropriate IDCAMS job.

```
//EXPSVMR JOB ( , , , 999), ENTIREX, NOTIFY=&SYSUID, MSGLEVEL=(1,1),
//          CLASS=K, MSGCLASS=X, REGION=0M, COND=(0,LT)
//*-----*
//* FILL THE SVM VSAM CLUSTER *
//*-----*
//IMPORT EXEC PGM=IDCAMS
//RECORDS DD DISP=SHR, DSN=EXP.SVM.TARGET.SEQ.RECORDS
//SVM DD DISP=SHR, DSN=EXP.SVM.KSDS
//SYSPRINT DD SYSOUT=*
//SYSIN DD *
  REPRO -
  REPLACE -
  INFILE(RECORDS) -
  OUTFILE(SVM)
```



Note: If you omit the keyword `REPLACE` or define `NOREPLACE` in the `SYSIN` data stream of `IDCAMS` instead, existing server mapping information is not overwritten. This protects server-side mapping records from being overwritten by duplicates.

Undeploying Server-side Mapping Files from the RPC Server

Use the Server Mapping Deployment Wizard to undeploy a server-side mapping file (Designer file with extension `.svm`). See *Server Mapping Files for COBOL*.

➤ To undeploy a server-side mapping file with the Server Mapping Deployment Wizard

- 1 Make sure your RPC server is active and that the Deployment Service of the RPC server is properly configured. See *Deployment Service*.
- 2 Make sure your IDL file is within a Designer directory (folder) without the related server-side mapping file (`.svm`).
- 3 From the context menu of your IDL file, choose **COBOL > Deploy/Synchronize Server Mapping** and call the Server Mapping Deployment Wizard. See *Server Mapping Deployment Wizard* in the Designer documentation. Because there is no related server-side mapping file in the Designer, all server mapping information related to the IDL file in the RPC server will be removed.

Change Management of Server-side Mapping Files

Under z/OS, change management for a VSAM file (server-side mapping container, see [Server-side Mapping Files in the RPC Server](#)) is similar to change management for a database. The complete VSAM file can be backed up at any time, for example by using IDCAMS. All updates to the VSAM file done after a backup must be kept.

All Designer server-side mapping files (.svm) added since the last backup should be available. See *Server Mapping Files for COBOL* in the Designer documentation.

List Deployed Server-side Mapping Files

Use IDCAMS to list the contents of the server-side mapping container. See [Server-side Mapping Files in the RPC Server](#).

```
//EXXPRINT JOB ( , , , 999 ), ENTIREX, NOTIFY=&SYSUID, MSGLEVEL=(1,1),
//          CLASS=K, MSGCLASS=X, REGION=0M
//*-----*
//* PRINT CONTENTS OF AN SVM VSAM CLUSTER *
//*-----*
//SVMPRINT EXEC PGM=IDCAMS
//SYSPRINT DD SYSOUT=*
//IN      DD DISP=SHR, DSN=ETS.SVM.KSDS
//OUT     DD SYSOUT=*
//SYSIN   DD *
PRINT -
  INFILE(IN) -
  DUMP | HEX | CHAR -
  OUTFILE(OUT)
/*
//
```

Use `DUMP` or `CHAR` format to print the server-side mapping records of the VSAM file.

Check if a Server-side Mapping File Revision has been Deployed

Server-side mapping records in the server-side mapping container correspond to lines of Designer files with extension `.svm`. See *Server Mapping Files for COBOL* in the Designer documentation. The records contain a creation timestamp at offset 276 (decimal) in the format `YYYYMMDDHHIISS`. Precision is 1/10 of a second. The creation timestamp can be checked.

The timestamp can be found on the same offset in the records in the server-side mapping container (VSAM file). See *Server-side Mapping Files in the RPC Server*.

Access Control: Secure Server Mapping File Deployment

For deployment with the *Server Mapping Deployment Wizard*, use EntireX Security if the broker is running on platforms z/OS, UNIX, Windows or z/VSE. See *Enabling the Deployment Service*.

For IBM deployment tool IDCAMS, use RACF to secure deployment.

Ensure that Deployed Server-side Mapping Files are not Overwritten

For IDCAMS, use the `NOREPLACE` option to disallow overwriting of duplicate server-side mapping records in the server-side mapping container (VSAM file); see *Server-side Mapping Files in the RPC Server*. See also *Deploying Server-side Mapping Files to the RPC Server*.

Is There a Way to Smoothly Introduce Server-side Mapping Files?

All EntireX RPC servers can be executed without server-side mapping files. See *Server-side Mapping Files in the RPC Server*. There is no need to install the server-side mapping container if the following conditions are met:

- You do not use features that require server mapping; see *When is a Server Mapping File Required?*
- Server-side type of COBOL mapping is switched on in the Designer. If you have not used server-side mapping, we recommend you use client-side mapping. See *Server Mapping Files for COBOL*.

You can also call COBOL servers generated or extracted with previous versions of EntireX mixed with a COBOL server that requires server-side mapping. All EntireX RPC servers are backward compatible.

7 Scenarios and Programmer Information

▪ COBOL Scenarios	52
▪ PL/I Scenarios	53
▪ C Scenarios	54
▪ Assembler Scenarios	54
▪ Returning Application Errors	55

COBOL Scenarios

Scenario I: Calling an Existing COBOL Server

➤ To call an existing COBOL server

- 1 Use the IDL Extractor for COBOL to extract the Software AG IDL and, depending on the complexity, also a server mapping file. See *When is a Server Mapping File Required?* in the Designer documentation.
- 2 Build an EntireX RPC client using any EntireX wrapper. For a quick test you can:
 - use the IDL Tester; see *EntireX IDL Tester* in the Designer documentation
 - generate an XML mapping file (XMM) and use the XML Tester for verification; see *EntireX XML Tester* in the XML/SOAP Wrapper documentation

See *Client and Server Examples for z/OS Batch* in the COBOL Wrapper documentation for COBOL RPC Server examples.

Scenario II: Writing a New COBOL Server

➤ To write a new COBOL server

- 1 Use the COBOL Wrapper to generate a COBOL server skeleton and, depending on the complexity, also a server mapping file. See *When is a Server Mapping File Required?* in the Designer documentation. Write your COBOL server and proceed as described under *Using the COBOL Wrapper for the Server Side*.
- 2 Build an EntireX RPC client using any EntireX wrapper. For a quick test you can:
 - use the IDL Tester; see *EntireX IDL Tester* in the Designer documentation
 - generate an XML mapping file (XMM) and use the XML Tester for verification; see *EntireX XML Tester* in the XML/SOAP Wrapper documentation

See *Client and Server Examples for z/OS Batch* in the COBOL Wrapper documentation for COBOL RPC Server examples.

PL/I Scenarios

Scenario III: Calling an Existing PL/I Server

➤ To call an existing PL/I server

- 1 Use the IDL Extractor for PL/I to extract the Software AG IDL.
- 2 Build an EntireX RPC client using any EntireX wrapper. For a quick test you can:
 - use the IDL Tester; see *EntireX IDL Tester* in the Designer documentation
 - generate an XML mapping file (XMM) and use the XML Tester for verification; see *EntireX XML Tester* in the XML/SOAP Wrapper documentation

See *Client and Server Examples for z/OS Batch* in the PL/I Wrapper documentation for PL/I RPC Server examples.

Scenario IV: Writing a New PL/I Server

➤ To write a new PL/I server

- 1 Use the PL/I Wrapper to generate a PL/I server skeleton. Write your PL/I server and proceed as described under *Using the PL/I Wrapper for the Server Side*.
- 2 Build an EntireX RPC client using any EntireX wrapper. For a quick test you can:
 - use the IDL Tester; see *EntireX IDL Tester* in the Designer documentation
 - generate an XML mapping file (XMM) and use the XML Tester for verification; see *EntireX XML Tester* in the XML/SOAP Wrapper documentation

See *Client and Server Examples for z/OS Batch* in the PL/I Wrapper documentation for PL/I RPC Server examples.

C Scenarios

Scenario V: Writing a New C Server

➤ To write a new C server

- 1 Use the C Wrapper to generate a C server skeleton and a C server interface object. Write your C server and proceed as described under *Using the C Wrapper for the Server Side (z/OS, UNIX, Windows, BS2000, IBM i)*.
- 2 Build an EntireX RPC client using any EntireX wrapper. For a quick test you can:
 - use the IDL Tester; see *EntireX IDL Tester* in the Designer documentation
 - generate an XML mapping file (XMM) and use the XML Tester for verification; see *EntireX XML Tester* in the XML/SOAP Wrapper documentation

Assembler Scenarios

Scenario VI: Writing a New Assembler Server

➤ To write a new Assembler (IBM 370) server

- 1 Build an RPC server in Assembler. Here are some hints:
 - The RPC server is dynamically callable (no pre-initialization required).
 - The parameter interface is either compatible with the COBOL or PL/I calling convention (IDL level parameter will be passed in the address list). Configure the parameter `marshalling` accordingly for COBOL or PL/I.
 - The alignment of integer or float data types is considered. The HASM Assembler aligns integer or float data types to appropriate boundaries. For example:

```
...
MyLabel  DSECT
MyField1 DS   H           I2
MyField2 DS   F           I4
MyField3 DS   E           F4
MyField4 DS   L           F8
```

- The RPC Server for Batch will not align these data types by default.

- To force alignment by definition in your IDL file (see the aligned attribute within the `attribute-list` under *Software AG IDL Grammar* in the IDL Editor documentation) before generating your RPC client. For information on whether your client supports the aligned attribute, see *Mapping the aligned Attribute* in the respective Wrapper documentation.
- 2 Build an EntireX RPC client using any EntireX wrapper. For a quick test you can:
- use the IDL Tester; see *EntireX IDL Tester* in the Designer documentation
 - generate an XML mapping file (XMM) and use the XML Tester for verification; see *EntireX XML Tester* in the XML/SOAP Wrapper documentation

Returning Application Errors

Using RETURN-CODE Special Register (COBOL only)

The `RETURN-CODE` special register (an IBM extension to the COBOL programming language) is used by your RPC server to report an error.

Upon return, the value contained in the `RETURN-CODE` special register is detected by the RPC Server for Batch and sent back to the RPC client instead of the application's data.

For IBM compilers the `RETURN-CODE` special register has the implicit definition:

```
RETURN-CODE GLOBAL PICTURE S9(4) USAGE BINARY VALUE ZERO
```

Special registers are reserved words that name storage areas generated by the compiler. Their primary use is to store information produced through specific COBOL features. Each such storage area has a fixed name, and must not be defined within the program. See your compiler documentation for more information.

The following rules apply to application error codes:

- The value range for application errors is 1-9999. No other values are allowed.
- On the RPC client side, the error is prefixed with the error class 1002 "Application User Error" and presented as error 1002nnnn.
- No application data is sent back to the RPC client in case of an error.
- It is not possible to return an error text to the RPC client.

Example

```
. . .
    IF error occurred THEN
        MOVE <error-number> TO RETURN-CODE
        GO TO MAIN-EXIT
    END-IF.
. . .

MAIN-EXIT.
    EXIT PROGRAM.
END PROGRAM RETCODE.
```



Note: To enable this feature, configure the RPC Server for Batch with [return_code=yes](#).