

webMethods EntireX

Software AG IDL Extractor for XML Document

Version 10.9

April 2023

This document applies to webMethods EntireX Version 10.9 and all subsequent releases.

Specifications contained herein are subject to change and these changes will be reported in subsequent release notes or new editions.

Copyright © 1997-2023 Software AG, Darmstadt, Germany and/or Software AG USA, Inc., Reston, VA, USA, and/or its subsidiaries and/or its affiliates and/or their licensors.

The name Software AG and all Software AG product names are either trademarks or registered trademarks of Software AG and/or Software AG USA, Inc. and/or its subsidiaries and/or its affiliates and/or their licensors. Other company and product names mentioned herein may be trademarks of their respective owners.

Detailed information on trademarks and patents owned by Software AG and/or its subsidiaries is located at <http://softwareag.com/licenses>.

Use of this software is subject to adherence to Software AG's licensing conditions and terms. These terms are part of the product documentation, located at <http://softwareag.com/licenses/> and/or in the root installation directory of the licensed product(s).

This software may include portions of third-party products. For third-party copyright notices, license terms, additional rights or restrictions, please refer to "License Texts, Copyright Notices and Disclaimers of Third-Party Products". For certain specific third-party license restrictions, please refer to section E of the Legal Notices available under "License Terms and Conditions for Use of Software AG Products / Copyright and Trademark Notices of Software AG Products". These documents are part of the product documentation, located at <http://softwareag.com/licenses> and/or in the root installation directory of the licensed product(s).

Use, reproduction, transfer, publication or disclosure is prohibited except as specifically provided for in your License Agreement with Software AG.

Document ID: EXX-EEXXXMLDOEXTRACTOR-109-20230403

Table of Contents

1 About this Documentation	1
Document Conventions	2
Online Information and Support	2
Data Protection	3
2 Introduction to the IDL Extractor for XML Document	5
3 Using the IDL Extractor for XML Document	7
Step 1: Start the IDL Extractor for XML Document	8
Step 2: Select a Source	9
Step 3a: Specify XML File	10
Step 3b: Specify XML File URL	10
Step 4: Specify Output Files	11
Step 5: Specify Options for Target Programming Language	11
Extraction Result	16
4 Using the IDL Extractor for XML Document in Command-line Mode	17
5 XML Document to IDL Mapping	19
Extracting IDL from XML Document	20
XML Schema Parameter Mapping	20
Extracting the Name for the IDL Library	21
Extracting the Name for the IDL Program	21

1 About this Documentation

▪ Document Conventions	2
▪ Online Information and Support	2
▪ Data Protection	3

Document Conventions

Convention	Description
Bold	Identifies elements on a screen.
Monospace font	Identifies service names and locations in the format <code>folder.subfolder.service</code> , APIs, Java classes, methods, properties.
<i>Italic</i>	Identifies: Variables for which you must supply values specific to your own situation or environment. New terms the first time they occur in the text. References to other documentation sources.
Monospace font	Identifies: Text you must type in. Messages displayed by the system. Program code.
{ }	Indicates a set of choices from which you must choose one. Type only the information inside the curly braces. Do not type the { } symbols.
	Separates two mutually exclusive choices in a syntax line. Type one of these choices. Do not type the symbol.
[]	Indicates one or more options. Type only the information inside the square brackets. Do not type the [] symbols.
...	Indicates that you can type multiple options of the same type. Type only the information. Do not type the ellipsis (...).

Online Information and Support

Product Documentation

You can find the product documentation on our documentation website at <https://documentation.softwareag.com>.

In addition, you can also access the cloud product documentation via <https://www.software-ag.cloud>. Navigate to the desired product and then, depending on your solution, go to “Developer Center”, “User Center” or “Documentation”.

Product Training

You can find helpful product training material on our Learning Portal at <https://knowledge.softwareag.com>.

Tech Community

You can collaborate with Software AG experts on our Tech Community website at <https://tech-community.softwareag.com>. From here you can, for example:

- Browse through our vast knowledge base.
- Ask questions and find answers in our discussion forums.
- Get the latest Software AG news and announcements.
- Explore our communities.
- Go to our public GitHub and Docker repositories at <https://github.com/softwareag> and <https://hub.docker.com/publishers/softwareag> and discover additional Software AG resources.

Product Support

Support for Software AG products is provided to licensed customers via our Empower Portal at <https://empower.softwareag.com>. Many services on this portal require that you have an account. If you do not yet have one, you can request it at <https://empower.softwareag.com/register>. Once you have an account, you can, for example:

- Download products, updates and fixes.
- Search the Knowledge Center for technical information and tips.
- Subscribe to early warnings and critical alerts.
- Open and update support incidents.
- Add product feature requests.

Data Protection

Software AG products provide functionality with respect to processing of personal data according to the EU General Data Protection Regulation (GDPR). Where applicable, appropriate steps are documented in the respective administration documentation.

2 Introduction to the IDL Extractor for XML Document

The Software AG IDL Extractor for XML Document generates an IDL File and a related XML mapping file (XMM) from a given XML document.

The Software AG Designer provides a wizard to collect all necessary input. You can extract from either

- a remote location using a URL (see [Step 2: Select a Source](#) for supported protocols), or
- directly from your Eclipse workspace.



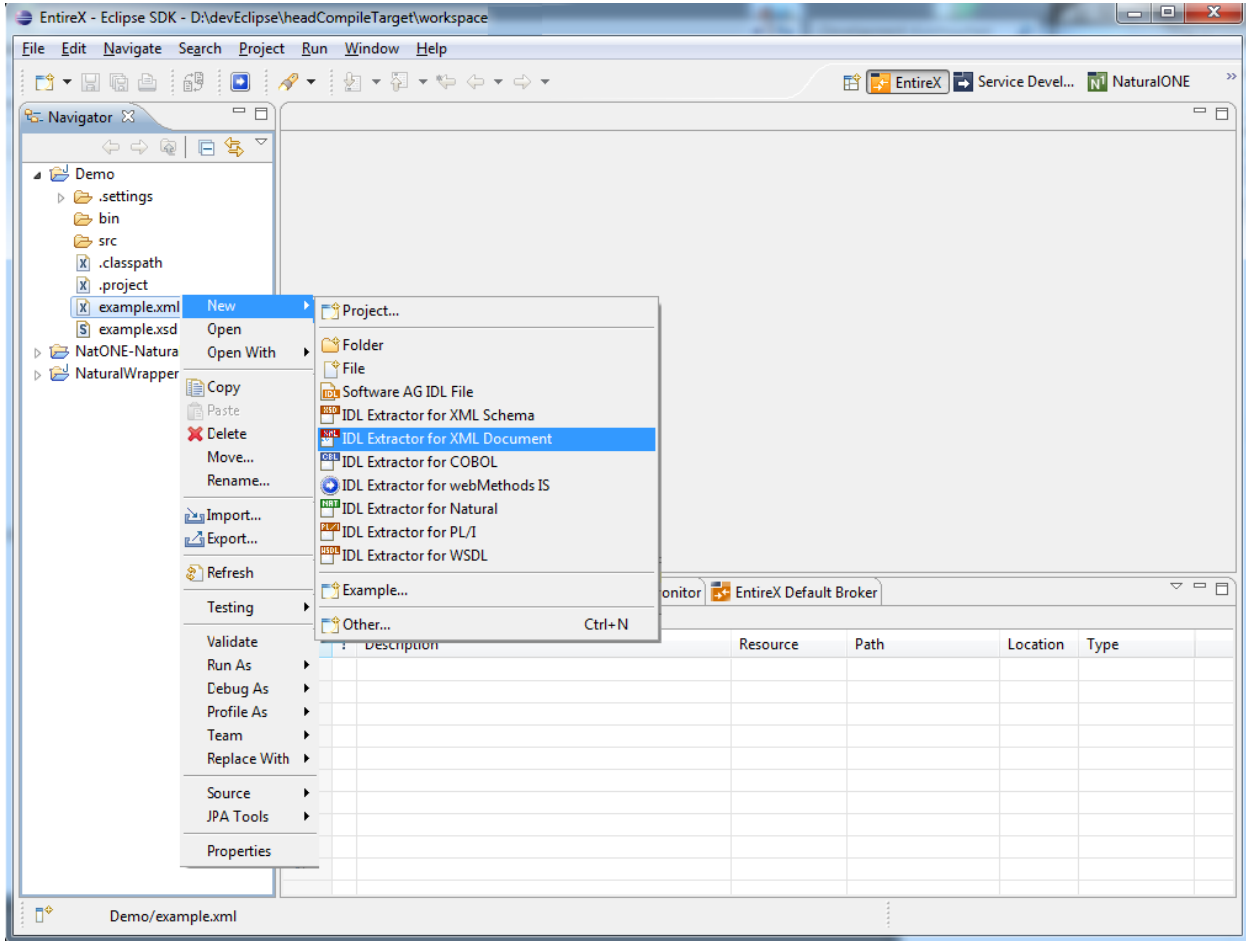
3 Using the IDL Extractor for XML Document

- Step 1: Start the IDL Extractor for XML Document 8
- Step 2: Select a Source 9
- Step 3a: Specify XML File 10
- Step 3b: Specify XML File URL 10
- Step 4: Specify Output Files 11
- Step 5: Specify Options for Target Programming Language 11
- Extraction Result 16

Caution: If you modify the imported IDL file, do this only in the XML Mapping Editor to ensure the correct dependencies between the IDL and the related XMM file.

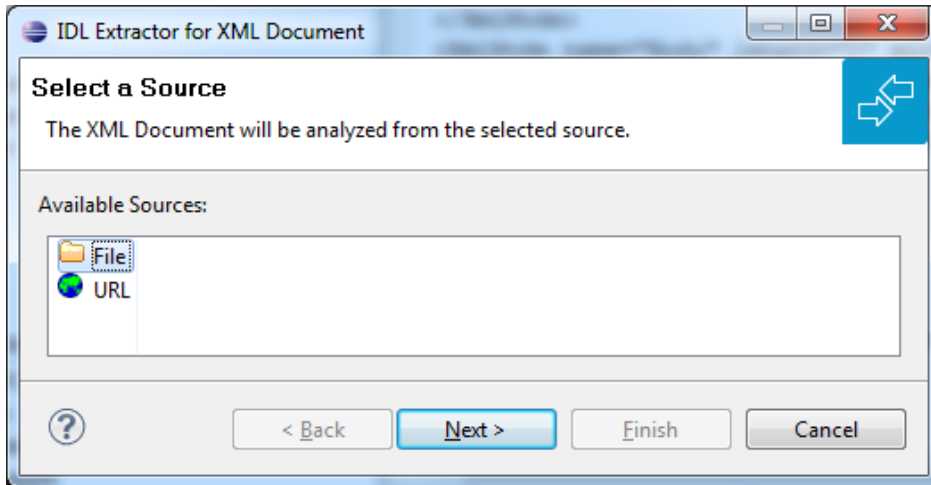
Step 1: Start the IDL Extractor for XML Document

Start the IDL Extractor for XML Document as any other eclipse New wizard:



Step 2: Select a Source

Depending on the location of the XML document to analyze, choose **File** or **URL**:



■ File

If the XML Document source file to be extracted is available in your workspace and you have selected it, the file location will be entered in the wizard automatically in the next [Step 3a: Specify XML File](#).

■ URL

Continue with [Step 3b: Specify XML File URL](#).



Notes:

1. The supported URL protocols are FILE, FTP, HTTP, HTTPS and JAR, for example

```
jar:file:/C:test.jar!/Test.xml
```

2. If the connection is over HTTPS, you need to set up HTTPS in Designer:

Define `trustStore` in Designer, for example with the following lines in file `eclipse.ini`

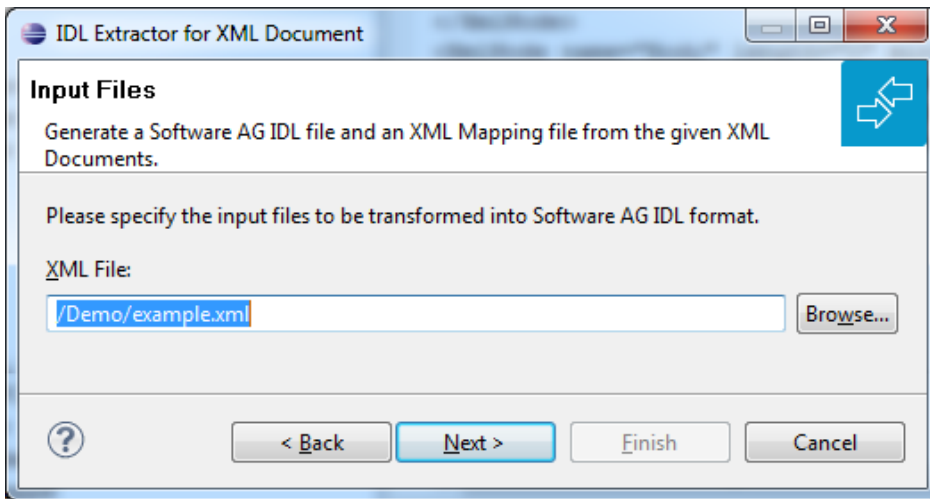
```
-Djavax.net.ssl.trustStore=<path to keystore>
-Djavax.net.ssl.trustStorePassword=<keystore password>
```

If hostname verification for certification is to be disabled, also add the line:

```
-Dcom.softwareag.entirex.ssl.hostnameverify=false
```

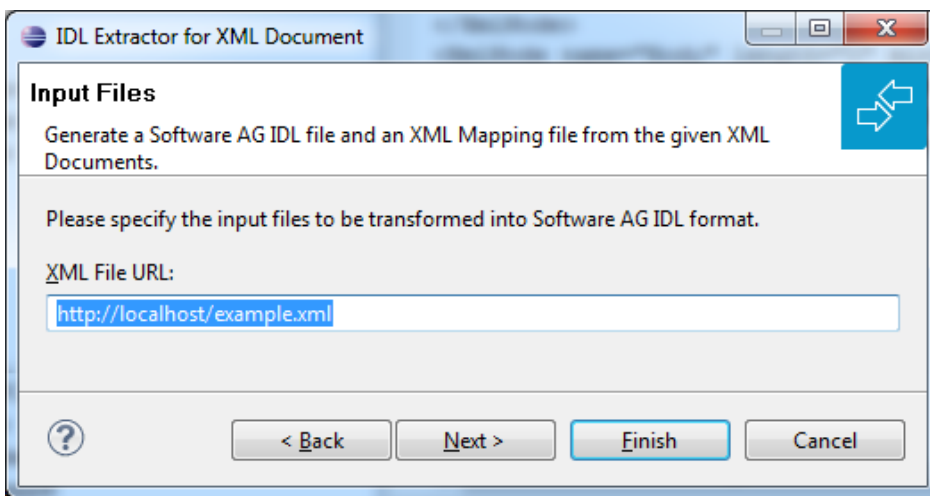
Step 3a: Specify XML File

If you selected the XML Document source file before you started the wizard, the file location is already present. Enter or browse for the XML Document source file. Continue with [Step 4: Specify Output Files](#).

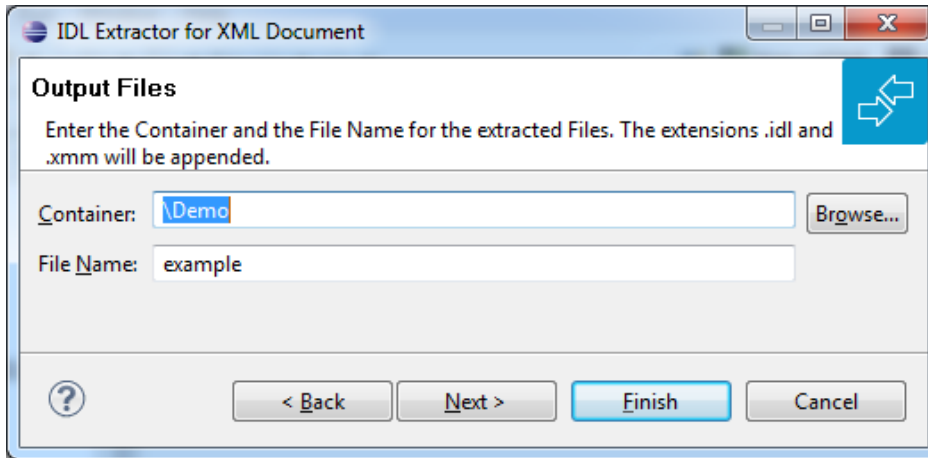


Step 3b: Specify XML File URL

Enter the URL for the XML Document source file.



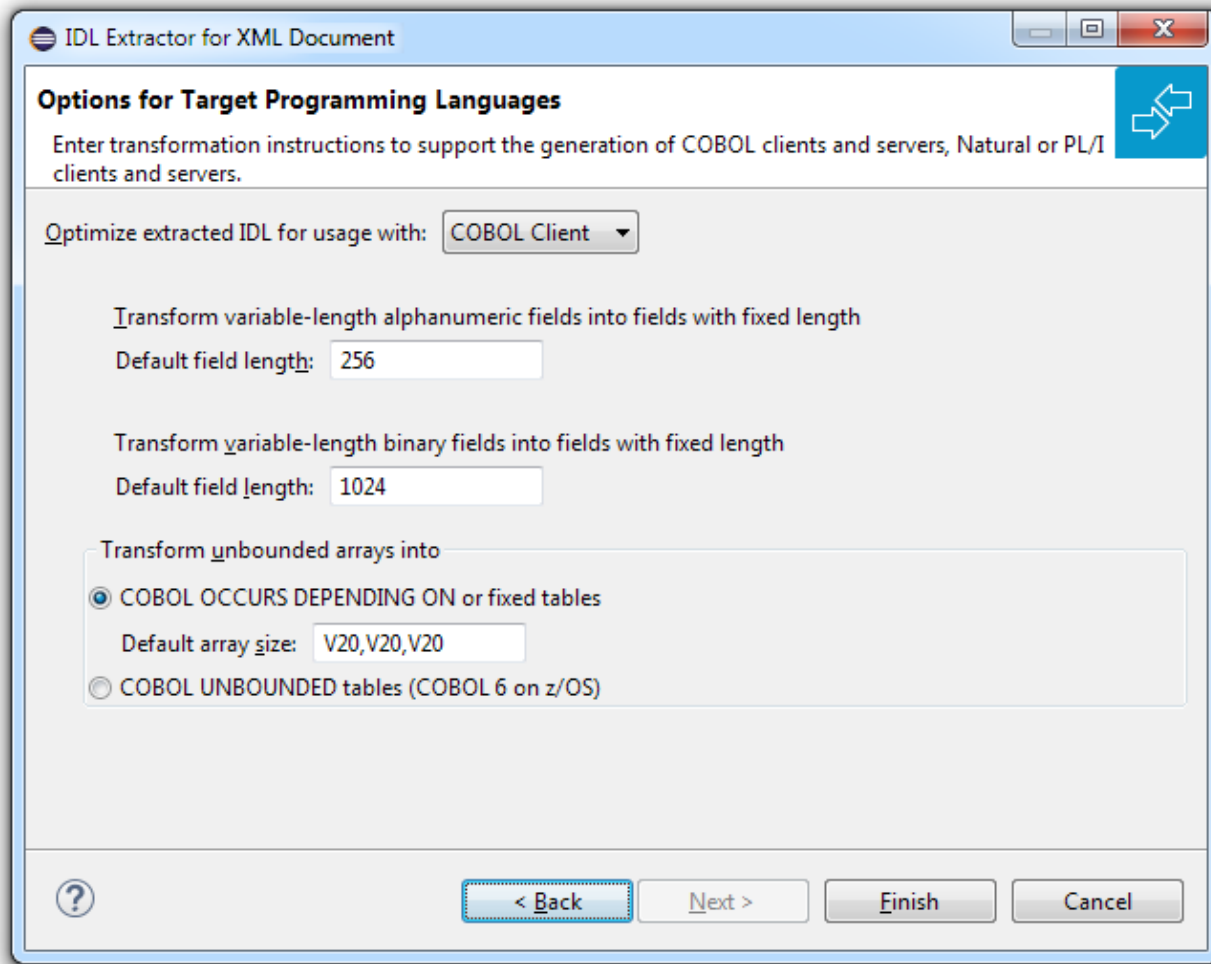
Step 4: Specify Output Files



Select the Container where the IDL file will be stored. Enter the name of the new IDL file and the related XML mapping file.

Step 5: Specify Options for Target Programming Language

The **Options for Target Programming Language** page allows you to specify transformation rules for variable-length fields and unbounded arrays. This is required if you later use the COBOL Wrapper or PL/I Wrapper with the extracted IDL - otherwise COBOL or PL/I wrapping is not possible. If you later use the Natural Wrapper, transformation rules are optional. If they are used, the interface from a Natural point of view is more legacy-like, easier to use but with restrictions.



With the transformation rules, you define default (maximum) lengths and sizes depending on the originating data types on the XML side. If you need different (maximum) lengths and sizes for fields with the same data type, use the XML Mapping Editor. See *Using the XML Mapping Editor*

Caution: If you modify the imported IDL file, do this only in the XML Mapping Editor to ensure the correct dependencies between the IDL and the related XMM file.

Depending on the target programming language of your scenario, the available/possible transformation rules differ. Use the combo-box and choose the target programming language:

- COBOL Client
- COBOL Server
- Natural
- PL/I Client
- PL/I Server

- Other

COBOL Client

For generation of clients with the COBOL Wrapper.

Variable-length fields with unlimited number of elements are not directly supported by COBOL. Unbounded arrays can be transformed into fixed or unbounded tables (use only for COBOL 6 on z/OS). There are two possibilities to specify options:

- **Transform Variable-length Fields into Fixed-length COBOL Fields and Unbounded Arrays into Fixed or Unbounded Tables**

Variable-length fields on the XML side are mapped to fixed-length COBOL data items, that is, they will always be padded (alphanumeric with trailing blanks; binary with x00). Unbounded arrays on the XML side can be mapped to fixed-size COBOL tables, see *COBOL Tables with Fixed Size*. This means they will always be filled up to the maximum number of elements. To use this possibility, enter the length or size to define the restriction, for example 256, 1024 or 20. In case of COBOL 6 on z/OS they can be also transformed into unbounded tables.

- **Limit Variable-length Fields and Unbounded Arrays to a Maximum**

For variable-length fields, EntireX provides a possibility to transform them into variable-length fields with a maximum length. See *IDL Data Types*, AVnumber and BVnumber under column Type and Length. In this case the variable-length fields are also mapped to fixed-length COBOL data items, but they will be trimmed (alphanumeric with blank, binary with x00) on the COBOL side. Unbounded arrays with a maximum are directly supported in COBOL in the form of COBOL tables with the OCCURS DEPENDING on clause, see *COBOL Tables with Variable Size - DEPENDING ON Clause*. Only filled elements are transferred. In this case the RPC message size is reduced compared with the alternative *Transform to Fixed-length COBOL Fields and Tables* above. To use this possibility, enter a leading V-character before the limited length or limited size of unbounded arrays, such as V256, V1024 or V20.

COBOL Server

For generation of servers with the COBOL Wrapper.

Variable-length fields and unbounded arrays with unlimited number of elements are not directly supported by COBOL. There are two possibilities to specify options:

- **Transform to Fixed-length COBOL Fields and Tables**

Variable-length fields on the XML side are mapped to fixed-length COBOL data items, that is, they will always be padded (alphanumeric with trailing blanks; binary with x00). Unbounded arrays on the XML side are mapped to fixed-size COBOL tables, see *COBOL Tables with Fixed Size*. This means they will always be filled up to the maximum number of elements. To use this possibility, enter the length or size to define the restriction, for example 256, 1024 or 20.

■ Limit Variable-length Fields and Unbounded Arrays to a Maximum

For variable-length fields, EntireX provides a possibility to transform them into variable-length fields with a maximum length. See *IDL Data Types*, *AVnumber* and *BVnumber* under column Type and Length. In this case the variable-length fields are also mapped to fixed-length COBOL data items, but they will be trimmed (alphanumeric with blank, binary with x00) on the COBOL side. Unbounded arrays with a maximum are directly supported in COBOL in the form of COBOL tables with the *OCCURS DEPENDING ON* clause, see *COBOL Tables with Variable Size - DEPENDING ON Clause*. Only filled elements are transferred. In this case the RPC message size is reduced compared with the alternative *Transform to Fixed-length COBOL Fields and Tables* above. To use this possibility, enter a leading V-character before the limited length or limited size of unbounded arrays, such as V256, V1024 or V20.

Natural

For generation of clients and servers with the Natural Wrapper.

Variable-length fields and unbounded arrays with unlimited number of elements are directly supported by Natural. As an alternative, EntireX also provides the possibility to transform to a more legacy-like interface with fixed length.

■ Transform to Fixed-length Fields and Fixed-size Arrays on the Natural Side

Variable-length fields on the XML side are mapped to fixed-length Natural data types, that is, they will always be padded (alphanumeric with trailing blanks; binary with x00). Unbounded arrays on the XML side are mapped to fixed-length Natural arrays, that is, they will always be filled up to the maximum number of elements. Using this possibility you benefit from easier and simpler Natural programming. To use this possibility, check the check boxes and enter the restricted length for variable-length alphanumeric fields, such as 253, variable-length binary fields such as 126, and the restricted size, for example 20,20,20 for unbounded arrays.

■ Transform to Variable-length Fields and Variable-size Arrays on the Natural Side

Variable-length fields on the XML side are mapped to Natural *DYNAMIC* data types. No padding occurs on the Natural side. Unbounded arrays on the XML side are mapped to Natural X-Arrays. Only filled elements are transferred. In this case the RPC message size is reduced compared with the alternative *Transform to Fixed-length Fields and Fixed-size Arrays on the Natural Side* above. To use this possibility, clear the check boxes.

PL/I Client

For generation of clients with the PL/I Wrapper. The following possibilities exist in scenarios with PL/I clients:

■ Transform to Fixed-length Fields and Arrays

Variable-length fields on the XML side are mapped to fixed-length PL/I data items, that is, they will always be padded (alphanumeric with trailing blanks; binary with x00). Unbounded arrays on the XML side are mapped to fixed-size PL/I arrays, see *Arrays* under *PL/I to IDL Mapping*.

This means they will always be filled up to the maximum number of elements. To use this possibility, enter the length or size to define the restriction, for example 256, 1024 or 20.

- **Limit Variable-length Fields to a Maximum**

As an alternative, variable-length fields can be mapped to PL/I data type with the attribute `VARYING`. See also *IDL Data Types* `AVnumber` and `BVnumber` under column `Type` and `Length`. In this case no padding occurs on the PL/I side. To use this possibility, enter a leading V-character before the limited length, such as `V256` or `V1024`.



Note: This alternative does not exist for unbounded arrays.

PL/I Server

For generation of servers with the PL/I Wrapper. The following possibilities exist in scenarios with PL/I servers:

- **Transform to Fixed-length Fields and Arrays**

Variable-length fields on the XML side are mapped to fixed-length PL/I data items, that is, they will always be padded (alphanumeric with trailing blanks; binary with `x00`). Unbounded arrays on the XML side are mapped to fixed-size PL/I arrays, see *Arrays* under *PL/I to IDL Mapping*. This means they will always be filled up to the maximum number of elements. To use this possibility, enter the length or size to define the restriction, for example 256, 1024 or 20.

- **Limit Variable-length Fields to a Maximum**

As an alternative, variable-length fields can be mapped to PL/I data type with the attribute `VARYING`. See also *IDL Data Types*, `AVnumber` and `BVnumber` under column `Type` and `Length`. In this case no padding occurs on the PL/I side. To use this possibility, enter a leading V-character before the limited length, such as `V256` or `V1024`.



Note: This alternative does not exist for unbounded arrays.

- **Transform to Variable-size Arrays on the PL/I Side**

As an alternative for unbounded arrays on the XML side, they can be mapped to PL/I arrays using `(*,*,*)` notation. Only filled elements are transferred. Note that PL/I does not allow resizing of these data types and arrays. In this case the RPC message size is reduced compared with the first alternative *Transform to Fixed-length PL/I Fields and Arrays* above. To use this possibility, uncheck the check box.



Note: This alternative does not exist for variable-length fields.

Other

If you later use wrappers other than the COBOL Wrapper, Natural Wrapper or PL/I Wrapper, no transformation rules are required. Variable-length fields and unbounded arrays are extracted as is; there are no restrictions regarding data length that can be transferred in variable-length fields and the number of elements that can be transferred in unbounded arrays.

Press **Finish** to start extraction.

Extraction Result

When the operation is completed, the IDL file is opened with the *Software AG IDL Editor*.

If the XML Document source files to extract from contain parameters that cannot be mapped to IDL parameters, an IDL file with incorrect IDL syntax is created. The unsupported parameters lead to IDL parameters of data type Error, which is not supported. In the **Problems View** you get a marker for the first error in the IDL file.

4 Using the IDL Extractor for XML Document in Command-line Mode

See *Using EntireX in the Designer Command-line Mode* for the general command-line syntax. The table below shows the command-line option for the IDL Extractor for XML Document.

Task	Command	Option	Description
Extract an IDL file and an XMM file from an XML Document.	-extract:xml	-help	Display this usage message.
		-project	Name of the project or subfolder where the IDL and XMM files are stored.

Example

```
<workbench> -extract:xml /Demo/example.xml
```

where *<workbench>* is a placeholder for the actual EntireX design-time starter as described under *Using EntireX in the Designer Command-line Mode*.

The extracted IDL file and related XML Mapping (XMM) files will be stored in parallel to the XML document source file, e.g. in the project *Demo*.

Status and processing messages are written to standard output (stdout), which is normally set to the executing shell window.

5 XML Document to IDL Mapping

- Extracting IDL from XML Document 20
- XML Schema Parameter Mapping 20
- Extracting the Name for the IDL Library 21
- Extracting the Name for the IDL Program 21

Extracting IDL from XML Document

The IDL Extractor for XML Document distinguishes between SOAP and pure XML. For XML documents, all parameters will be interpreted as strings and mapped according to specified transformation rules. See [Step 5: Specify Options for Target Programming Language](#). SOAP documents, which contain `xsi:type` attributes, use the parameter mapping in the table [XML Schema Parameter Mapping](#) below. The IDL parameter directions are IN-OUT and the XML mapping directions are IN (Request) and OUT (Response), no Fault mapping trees will be created. If you try to import a SOAP Fault document, the document will be imported as a normal SOAP document.

XML Schema Parameter Mapping

WSDL / XML Schema	XMM	Software AG IDL
binary, base64Binary	binary	BV (or BVn or Bn) ⁽³⁾
hexBinary ⁽¹⁾	binary	BV (or BVn or Bn) ⁽³⁾
boolean	boolean	L
date	date:yyyy-MM-dd ⁽²⁾	D
float	float	F4
double	float	F8
byte, unsignedByte	integer	I1
short, unsignedShort	integer	I2
int, unsignedInt	integer	I4
integer, positiveInteger, nonPositiveInteger, negativeInteger, nonNegativeInteger	number	N29.0
decimal, number	number	N22.7
long, unsignedLong	number	N19.0
time	dateTime:HH:mm:ss ⁽²⁾	T
dateTime	dateTime:yyyy-MM-dd'T'HH:mm:ss ⁽²⁾	T
gYearMonth	string	A8
gDay, gYear	string	A11
gMonth	string	A12
gMonthDay	string	A13
string (and all types not listed here)	string	AV (or AVn or An) ⁽³⁾



Notes:

1. The `hexBinary` format is not supported by the XML/SOAP Runtime.
2. Edit the `date` and `dateTime` patterns manually to match the formats of the original documents.

Example: `<myTime xsi:type="xsd:date">11:08:23+01:00</myTime> --> dateTime:HH:mm:ss '+01:00 ' --> T`



Note: The `+01:00` is not supported by IDL (EntireX RPC protocol).

3. Mapped according to specified transformation rules. See *Step 6: Specify Options for Target Programming Language*.

Extracting the Name for the IDL Library

The IDL library name (see `library-definition` under *Software AG IDL Grammar* in the IDL Editor documentation) will be extracted from the source file name of the XML document (SOAP document).

Extracting the Name for the IDL Program

The IDL program name (see `program-definition` under *Software AG IDL Grammar* in the IDL Editor documentation) will be extracted from the root tag of the XML document. If the document is SOAP dialect, the name of the first child element of the `<soapenv:Body>` (`xmlns:soapenv="http://schemas.xmlsoap.org/soap/envelope/"`) tag will be used.

