

Administering and Monitoring the EntireX Process Extractor

This chapter covers the following topics:

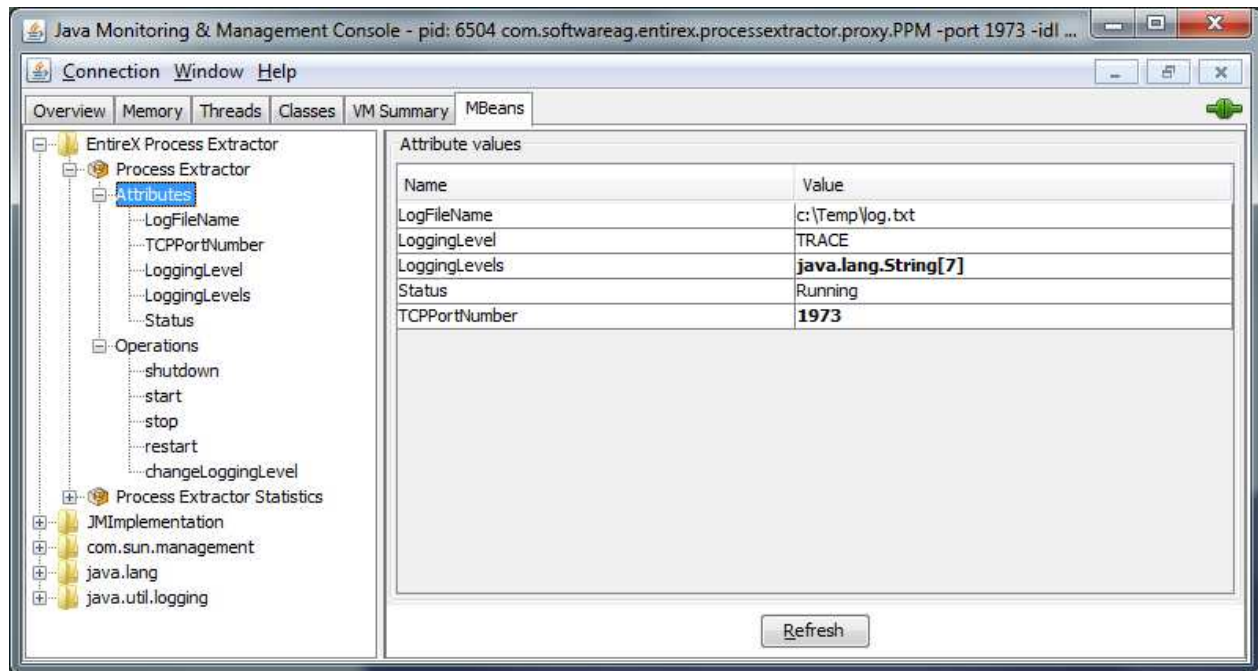
- Connecting to the EntireX Process Extractor with JMX
- Administrating with JMX
- Monitoring with JMX

Connecting to the EntireX Process Extractor with JMX

The EntireX Process Extractor uses two standard MBeans for administration and monitoring. Use JMX client tools, for example VisualVM or JConsole, to connect to the EntireX Process Extractor. Setting up the JMX connection is described in the relevant vendor documentation.

If the EntireX Process Extractor and JConsole or VisualVM as JMX Clients run on the same machine and under the same user, just start these tools. No further configuration is needed.

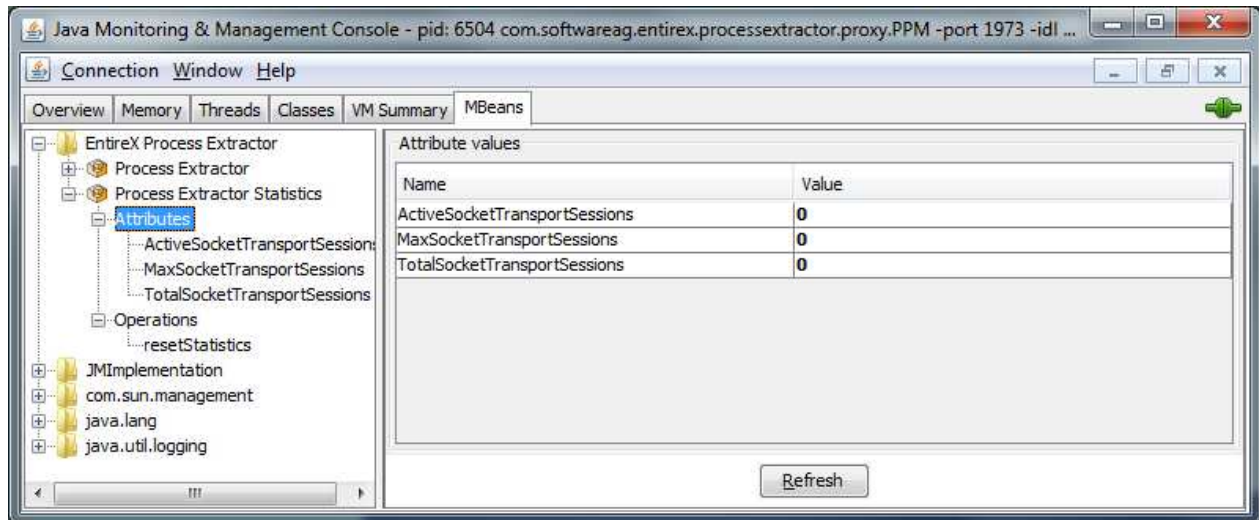
With JConsole the two MBeans of the EntireX Process Extractor look as follows:



The screenshot shows the Java Monitoring & Management Console (JConsole) window. The title bar indicates the connection to the EntireX Process Extractor proxy. The 'MBeans' tab is selected, showing a tree view of the MBeans. The 'EntireX Process Extractor' MBean is expanded, showing its 'Attributes' and 'Operations'. The 'Attributes' table is displayed on the right side of the window.

Name	Value
LogFileName	c:\Temp\log.txt
LoggingLevel	TRACE
LoggingLevels	java.lang.String[7]
Status	Running
TCPPortNumber	1973

A 'Refresh' button is located at the bottom of the MBeans view.



Administrating with JMX

For administration, the EntireX Process Extractor offers the following operations:

- **Process Extractor**

Operation	Description
changeLoggingLevel	Set a new logging level. See attribute LoggingLevels for a list of valid logging levels.
shutdown	Stop processing of the EntireX Process Extractor and shutdown the JVM.
start	Start processing of the EntireX Process Extractor with rereading the PPM event definition and opening a new XML file for extracted events.
stop	Stop processing of the EntireX Process Extractor and do not shutdown the JVM. Closes the XML file with extracted events and stops proxy functionality.
restart	Start processing with rereading the PPM event definition and close the current XML file with extracted events.

- **Process Extractor Statistics**

Operation	Description
resetStatistics	Set the attributes MaxSocketTransportSessions and TotalSocketTransportSessions to 0.

Monitoring with JMX

For monitoring, the EntireX Process Extractor offers the following operations:

- **Process Extractor**

Operation	Description
LogFileNames	The name of the log file.
TCPPortNumber	The TCP port where the EntireX Process Extractor listens for calls.
LoggingLevel	Get the current logging level.
LoggingLevels	Get the valid logging levels. These are: "OFF", "FATAL", "ERROR", "WARNING", "INFO", "DEBUG", and "TRACE" in the order of logging granularity (lowest to finest).
Status	Values are "Running" and "Stopped".

- **Process Extractor Statistics**

Operation	Description
ActiveSocketTransportSessions	Get the number of active transport sessions.
MaxSocketTransportSessions	Get the maximum number of active transport sessions. This is the high watermark of active sessions.
TotalSocketTransportSessions	Get the total number of transport sessions. This is accumulated over the whole runtime of the EntireX Process Extractor.