

Application Designer

Ajax Developer

Version 8.0 (2010-08-18)

August 2010

This document applies to Application Designer Version 8.0 (2010-08-18).

Specifications contained herein are subject to change and these changes will be reported in subsequent release notes or new editions.

Copyright © 2005-2010 Software AG, Darmstadt, Germany and/or Software AG USA, Inc., Reston, VA, United States of America, and/or their licensors.

The name Software AG, webMethods and all Software AG product names are either trademarks or registered trademarks of Software AG and/or Software AG USA, Inc. and/or their licensors. Other company and product names mentioned herein may be trademarks of their respective owners.

Use of this software is subject to adherence to Software AG's licensing conditions and terms. These terms are part of the product documentation, located at <http://documentation.softwareag.com/legal/> and/or in the root installation directory of the licensed product(s).

This software may include portions of third-party products. For third-party copyright notices and license terms, please refer to "License Texts, Copyright Notices and Disclaimers of Third-Party Products". This document is part of the product documentation, located at <http://documentation.softwareag.com/legal/> and/or in the root installation directory of the licensed product(s).

Table of Contents


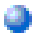
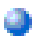
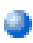

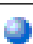


1 Ajax Developer	1
2 Getting Started with Ajax Developer	3
About the Runtime Environment	4
Setting the Ajax Developer Preferences	4
Working with Projects	5
Working with User Interface Components	10
Working With Version Control Systems	17
Using the Ajax Developer Perspective	18
3 Layout Painter	21
4 Getting Started with the Layout Painter	23
General Information	24
Creating a Layout	24
Layout Templates	26
Opening an Existing Layout	26
Elements of the Layout Painter	27
5 Defining the XML Layout	31
Previewing the Layout	32
Setting the Properties for a Control	35
Changing the Appearance of Text	36
Adding Controls to the Layout	37
Creating a Folder for Images	39
Defining a Background Image	39
Defining a Style Sheet	40
Defining Hotkeys	41
Managing the Nodes in the Layout Area	42
Managing the Controls in the Preview Area (SWT Only)	45
Viewing the XML Code	46
Viewing the Layout Painter Protocol	46
Saving the Layout	47
Viewing the XML to HTML Generation Log	48
Layout Tester	48
6 Using the Code Assistant	49
About the Code Assistant	50
Code Template	50
Opening the Code Assistant	50
Code Introspection	51
Generating the Code	52
Editing the Adapter Code	53
Saving Changes	54
Changes from the Outside	54
7 Using the Literal Assistant	55
About the Literal Assistant	56
Opening the Literal Assistant	56

Maintaining Literals	57
Selecting Another Language	58
Displaying a Comparison Language	58
8 Using the Validation Rules Editor	61
About the Validation Rules Editor	62
Opening the Validation Rules Editor	62
Adding a New Validation Rule	63
Displaying an Overview of All Defined Validation Rules	65
9 Using the Formula Editor	67
About the Formula Editor	68
Opening the Formula Editor	68
Adding a New Formula	69
Displaying an Overview of All Defined Formulae	71
10 Language Manager	73
About the Language Manager	74
Invoking the Language Manager	74
Defining a New Language	75
Opening an Existing Language	77
11 Literal Translator	79
About the Literal Translator	80
Invoking the Literal Translator	80
Loading the Literals of a Layout	81
Editing the Literals	82
Adding a New Text ID	82
Removing Text IDs	83
12 Style Sheet Editor	85
About the Style Sheet Editor	86
Creating a Folder for Your Own Style Sheets	86
Invoking the Style Sheet Editor	86
Defining the Location for Your Own Style Sheets	87
Creating a New Style Sheet	88
Opening an Existing Style Sheet	90
Changing a Style Sheet	90
Overview of Variables	92
Regenerating Your Own Style Sheet from the Style Sheet Template	93
Using a Version Control Tool	94
13 Tracing	95
About the Tracing Tools	96
Recording a Performance Trace	96
Executing a Performance Trace	99
14 Monitoring	103
About the Monitoring Tool	104
Invoking the Monitoring Tool	104
Memory	105
Active Sessions	105

System Management	106
15 Server Logs Viewer	107
About the Server Logs Viewer	108
Preconfigured Server Logs	108
Advanced Usage	110

1 Ajax Developer

This documentation describes the Ajax Developer tools that are available in the Eclipse environment for creating and maintaining complex graphical user interfaces. It is organized under the following headings:

 Getting Started with Ajax Developer	About the runtime environment. How to enable Ajax Developer for a project and how to create user interface components (that is, the folders containing the layouts). An overview of the files and folders that need to be checked in when using a version control system.
 Layout Painter	How to define page layouts with the Layout Painter. This also includes the tools which are available when the Layout Painter is active: Code Assistant, Literal Assistant, Validation Rules Editor and Formula Editor.
 Language Manager	How to define additional languages.
 Literal Translator	How to translate text IDs.
 Style Sheet Editor	How to create style sheets.
 Tracing	How to test the performance of a web application.
 Monitoring	How to monitor the sessions that are currently running.
 Server Logs Viewer	How to use the server logs viewer.



Notes:

1. For information on how to install the Ajax Developer plug-in in Eclipse, see *Installing Ajax Developer* in the *Installation* documentation.
2. For information on the Conversion Rules tool and the Conversion Logs tools, see the *Natural for Ajax* documentation that is provided for NaturalONE.

2 Getting Started with Ajax Developer

- About the Runtime Environment 4
- Setting the Ajax Developer Preferences 4
- Working with Projects 5
- Working with User Interface Components 10
- Working With Version Control Systems 17
- Using the Ajax Developer Perspective 18

About the Runtime Environment

Ajax Developer requires a web container such as Tomcat as its runtime environment.

If NaturalONE is installed, an Apache Tomcat is already included and all required configuration has automatically been done. In this case, you can immediately enable a project for Ajax Developer (see below).

If NaturalONE is not installed, you must first enter the settings for your own local web container environment in the Ajax Developer preferences. For further information, see [Setting the Ajax Developer Preferences](#).

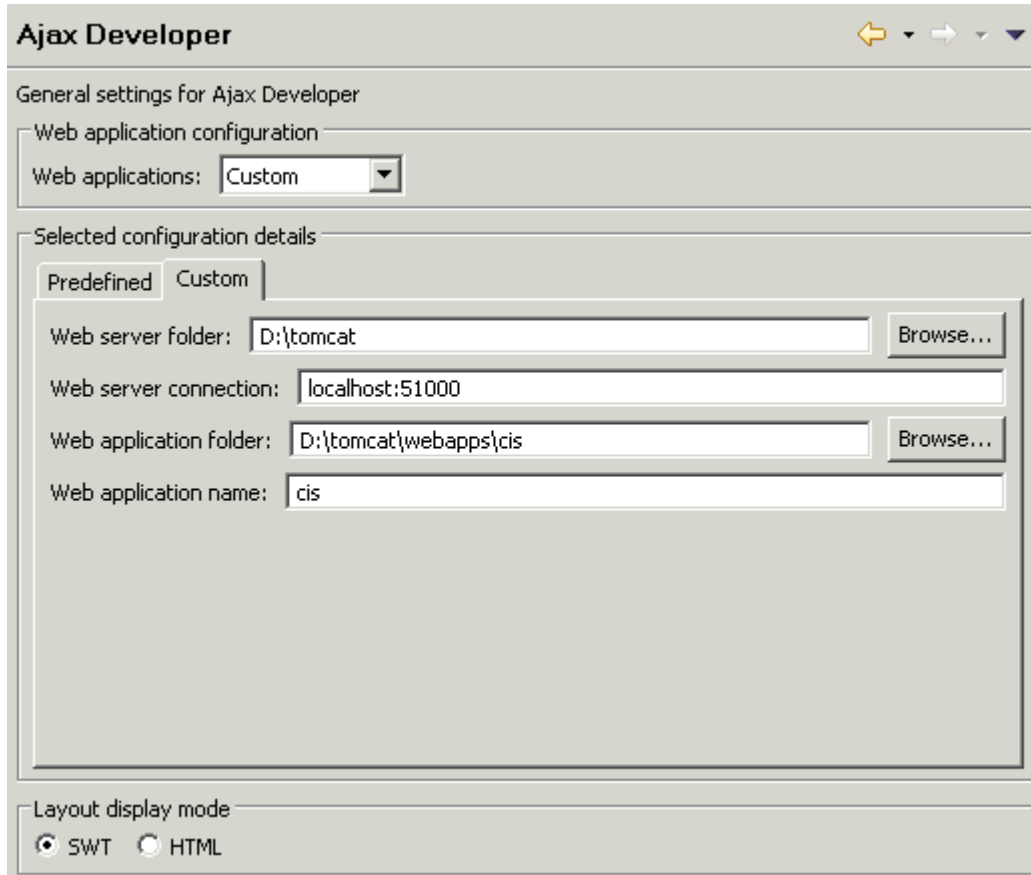
Setting the Ajax Developer Preferences

The following is normally only required, if you use your own local web container environment, that is, when NaturalONE is not installed.

▶ To set the Ajax Developer preferences

- 1 From the **Window** menu, choose **Preferences**.
- 2 In the tree of the resulting dialog box, expand the **Software AG** node and then the **Ajax Developer** node.
- 3 If you want to use your own web container environment, choose the **Custom** tab on the resulting **Ajax Developer** page and specify all required information. For information on the available options, see [Enabling a Project for Ajax Developer](#).

It is important that you set the web application folder to `<webcontainer-installdir>/webapps/cis`. Example:



The options under **Layout display mode** allow you to control how the page layouts are rendered by default in the Layout Painter preview window. If you choose **SWT**, the layout will be rendered by default as SWT (Standard Widget Toolkit) pages, that is, with Java means. If you choose **HTML**, the layout will be rendered by default as HTML pages.



Note: You can also change the display mode directly in the Layout Painter, using a menu command. See [Changing the Display Mode](#).

- 4 Choose the **OK** button to save your changes and to close the dialog box.

Working with Projects

The following topics are covered below:

- [Types of Projects](#)
- [Enabling a Project for Ajax Developer](#)
- [Changing the Ajax Developer Properties for a Project](#)

- [Disabling a Project for Ajax Developer](#)

Types of Projects

With Ajax Developer, page layouts can be developed in Natural or Java projects. You create your Natural or Java project as usual and then enable this project for Ajax Developer. When a project has been enabled for Ajax Developer, the settings for a specific web container environment are applied to the project. These settings are used to develop and run page layouts.

You can have multiple projects which are enabled for different web container environments.

In a NaturalONE installation, you will usually always enable a project for the preconfigured Tomcat environment. This is the so-called "Development" environment which is automatically installed and configured with NaturalONE.

When NaturalONE is not installed, you have the following choices for the location of your Java projects:

- Choose a project location outside the web container environment. This is recommended for development, especially for working with version control systems such as CVS or Subversion.
- Choose the web application root folder named *cis* as the project location. This is only recommended for testing and debugging layouts in a production environment or test environment.

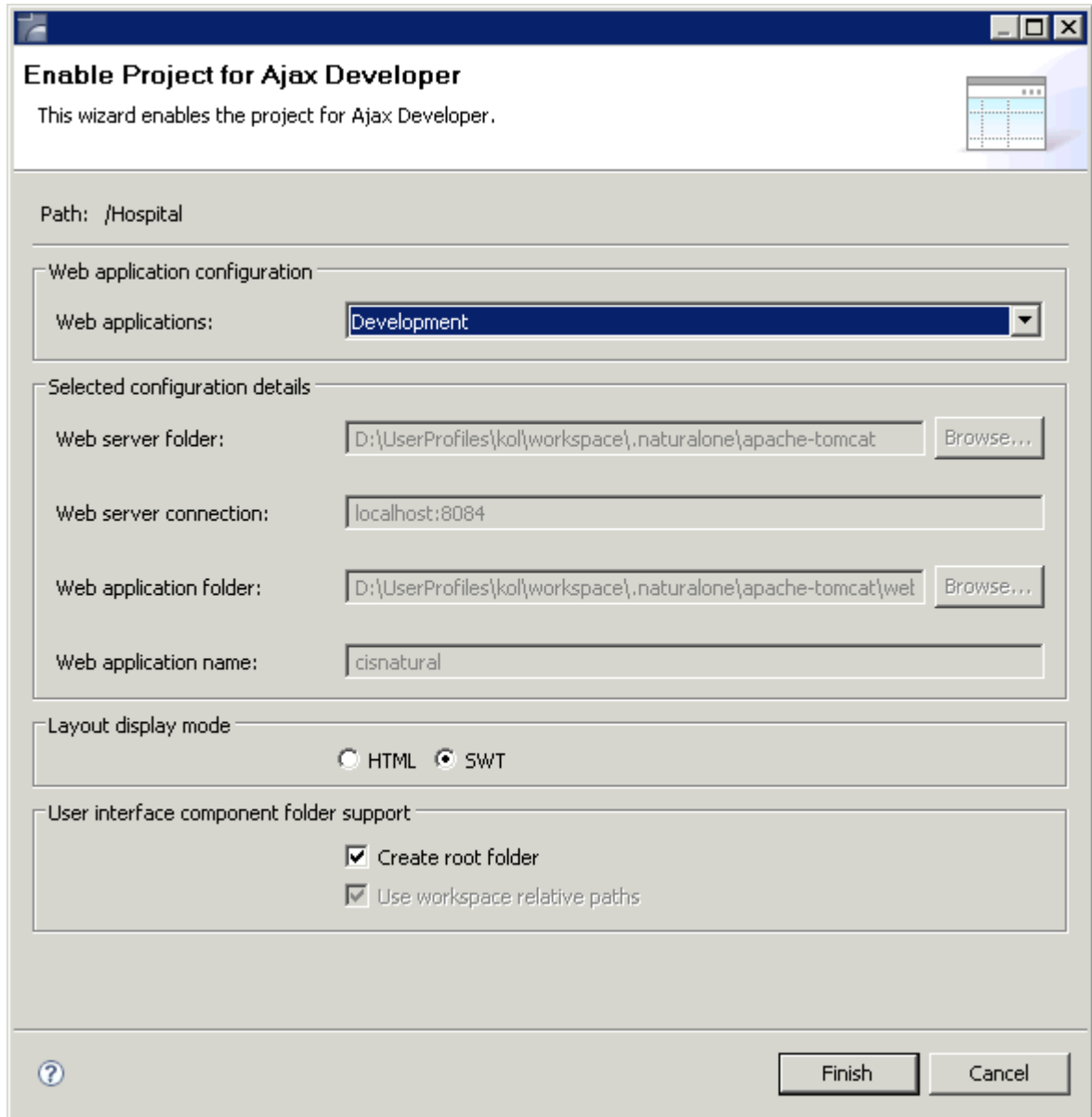
Enabling a Project for Ajax Developer

Before you can define layout pages for a project, you have to enable the project for Ajax Developer.

▶ To enable a project for Ajax Developer

- 1 In the **Navigator** view, select the project that you want to enable.
- 2 Invoke the context menu and choose **Enable for Ajax Developer**.

The following dialog box appears:



- Specify the following information:

Web applications

Select one of the following options from the drop-down list box:

- **Development**

If NaturalONE is installed, select this option. No further steps are required (the configuration options in this dialog box are disabled in this case).



Note: This option is only available when NaturalONE is installed.

- **Custom**

If NaturalONE is not installed, select this option. In this case, the configuration options in the dialog box are enabled and you can define your own settings for your web container environment. See below.

Web server folder

The root folder of the local web container environment.

Web server connection

Host name and port number of the local web container environment.

Web application folder

The folder of the Application Designer web application. For NaturalONE installations, this is the root folder of the *cisnatural* web application. If NaturalONE is not installed, this is the root folder of the *cis* web application (`<webcontainerinstalldir>/webapps/cis`).

Web application name

For NaturalONE, this is *cisnatural*. If NaturalONE is not installed, this is *cis*.

Layout display mode

Select the display mode for the Layout Painter and Layout Tester:

- **HTML**

This mode makes use of the ActiveX plug-in of Eclipse in which Internet Explorer is running.

- **SWT**

This mode makes use of SWT controls which are shown in an SWT client.

Create root folder

When selected, all user interface components of the project are created within a folder which has the fixed name "User-Interface-Components".

When not selected, all user interface components of the project are created directly in the project directory.

When NaturalONE is installed, the default for this setting can be defined under **Window > Preferences > Software AG > Natural**.

Use workspace relative paths

This option is read-only.

In a NaturalONE installation, the **Development** web application is part of your Eclipse workspace. Ajax Developer automatically uses relative paths to access this web application. When relative paths are used, the workspace can be renamed or moved on the file system.

If you are not working with NaturalONE and you are using the **Custom** web application, the web application is usually not located within your Eclipse workspace. In this case, Ajax Developer uses absolute paths. If you move your web application or your Tomcat on the file system, you must adapt the settings.

- 4 Choose the **Finish** button.

The icon for the project changes to indicate that Ajax Developer has been enabled for the project.

The context menu for the project now provides the additional cascading menu **Ajax Developer** which provides for selection a number of tools which are helpful when defining layouts.

Changing the Ajax Developer Properties for a Project

If you are working with NaturalONE, you can change the layout display mode that is defined for the project, for example, from SWT mode to HTML mode. If NaturalONE is not installed, you can also change the settings for your web container environment.

▶ To change the properties

- 1 In the **Navigator** view, select the project which has been enabled for Ajax Developer.
- 2 Invoke the context menu and choose **Properties**.
- 3 In the tree of the resulting dialog box, select **Ajax Developer**.

The resulting page contains the same information as the dialog box which appears when you enable a project for Ajax Developer. See [Enabling a Project for Ajax Developer](#) for further information.

Disabling a Project for Ajax Developer

If you decided to **remove all user interface components** from a project, it makes sense to entirely disable this project for Ajax Developer. Then, the Ajax Developer functionality is no longer available for the project.

The user interface components are not deleted physically from the disk. Thus, it is possible to re-enable the same project for Ajax Developer later.

▶ To disable a project

- 1 In the **Navigator** view, select the project that you want to disable.
- 2 Invoke the context menu and choose **Ajax Developer > Disable**.

Working with User Interface Components

The following topics are covered below:

- [Creating User Interface Components](#)
- [File Structure in a User Interface Component](#)
- [Changing the Properties of a User Interface Component](#)
- [Exporting User Interface Components](#)
- [Removing User Interface Components](#)
- [Cleaning User Interface Components](#)
- [Building User Interface Components](#)
- [Refreshing User Interface Components](#)

Creating User Interface Components

After a project has been enabled for Ajax Developer, you can add user interface components. A user interface component is a container for a set of layout pages and additional artifacts such style sheets, images or language files.

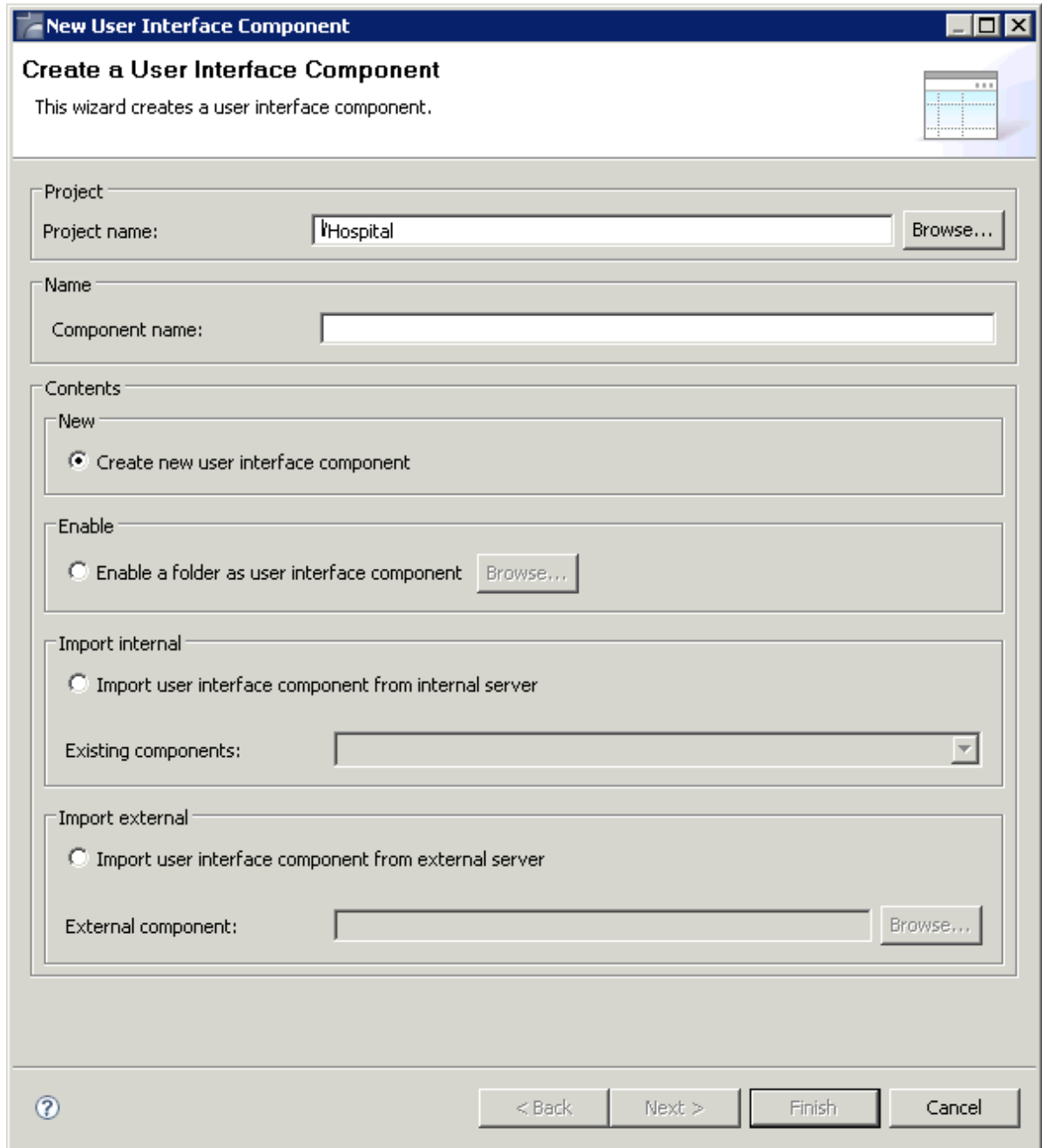
A user interface component is also connected to the corresponding Natural or Java sources which implement the business logic. A single Java or Natural project may contain several user interface components.

The name of the user interface component must be unique across the Eclipse workspace.

► To create a user interface component

- 1 In the **Navigator** view, select the project in which you want to create a user interface component.
- 2 From the **File** menu or context menu, choose **New > User Interface Component**.

The following dialog box appears:



- 3 In the **Component name** text box, enter a name for your user interface component (for example "MyFirstUI").
- 4 Select one of the following option buttons:

Create new user interface component

This option creates a new user interface component from scratch. The location of the new user interface component is a subfolder of your Natural or Java project folder.

Enable a folder as user interface component

This option converts an existing subfolder of the project to a user interface component folder. In this case, you have to choose the **Browse** button to select the folder to be converted from a dialog box.

The internal web container environment is then used for further development.

Import user interface component from internal server

This option moves an existing Application Designer project from the internal web container environment to your Eclipse workspace. The internal web container environment is the environment configured for this Natural or Java project. In this case, you have to select a component from the **Existing components** drop-down list box.

In a NaturalONE environment, the components "njxdemos" and "njxmapconverter" are provided in the drop-down list box.

If NaturalONE is not installed, the component "cis demos" is provided, and any existing Application Designer projects in your *cis* web application. If you have chosen the *cis* web application folder as your project location, the selected Application Designer projects will not be moved. If you have chosen a different project location, the selected Application Designer projects will be physically moved to a subfolder of your Java project folder.

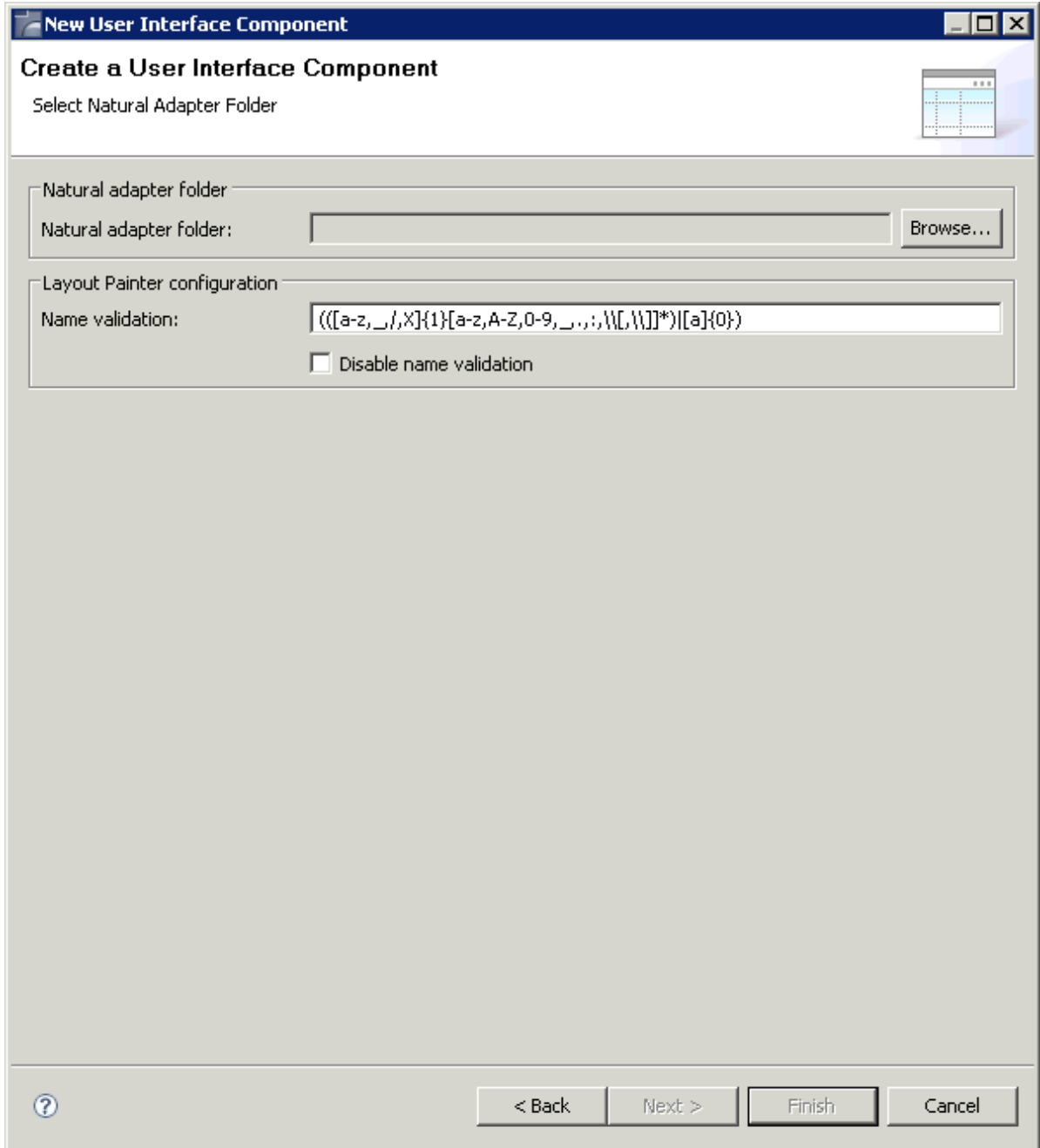
Import user interface component from external server

This option copies an existing Application Designer project from an external web container environment to your Eclipse workspace. An external web container environment is an environment other than the environment which is configured for the Natural or Java project. In this case, you have to choose the **Browse** button to select an external component from a dialog box.

The internal web container environment is then used for further development. The original sources in the external web container environment are no longer updated.

- 5 Choose the **Next** button.

The following page appears:



- 6 Choose the **Browse** button to select from a dialog box the folder into which the adapters are to be generated. Usually, you will select the *SRC* folder of a Natural library.
- 7 The **Name validation** text box shows all regular expressions that are used for the validation of properties and methods.

To switch off the validation, select the **Disable name validation** check box.

- 8 Choose the **Finish** button.

A new folder with the component name that you have defined is now shown in the **Navigator** view.

File Structure in a User Interface Component

After the creation of a user interface component, the following folders are visible in the **Navigator** view:

Folder Name	Description
<i>xml</i>	Contains the page layouts.
<i>multilanguage</i>	Contains text files for the language support. These files are maintained with the Literal Translator .

In addition, a user interface component contains folders such as *accesspath*, *wsdl* or *protocol*. These folders contain generation results which are automatically changed when a layout is modified. The files in these folders are not intended to be viewed or modified directly, and are therefore filtered in the **Navigator** view.

Changing the Properties of a User Interface Component

In the properties of a user interface component, you can change the path to the Natural adapter folder, you can change the regular expressions that are used for the validation of properties and methods, or you can disable the name validation.

► To change the properties of a user interface component

- 1 Select the user interface component in the **Navigator** view.
- 2 Invoke the context menu and choose **Properties**.
- 3 In the tree of the resulting dialog box, expand the **Ajax Developer** node.

This displays the same information which is also shown on the second page when you **create** a user interface component.

Natural adapter folder

Natural adapter folder:

Layout Painter configuration

Name validation:

Disable name validation

- 4 Change all required information.
- 5 Choose the **OK** button to save your changes and to close the dialog box.

Exporting User Interface Components

You can export a user interface component to an external web container environment. This is useful if a user interface component is to be tested in an environment other than the development environment.

▶ To export a user interface component

- 1 In the **Navigator** view, select the user interface component that you want to export
- 2 Invoke the context menu and choose **Ajax Developer > Export**.

The standard Eclipse functionality for exporting to the file system is used; see the Eclipse online help for further information.

- 3 Specify all required information.
- 4 Choose the **Finish** button.

Removing User Interface Components

When a user interface component is no longer required, you can remove it from the internal server.

After removing a user interface component, the files still exist physically on the disc and are still accessible in the **Navigator** view, but the files are no longer accessible from within the web application.

If you also want to delete the files, use the **Delete** command which is available in the context menu.

▶ To remove a user interface component

- 1 In the **Navigator** view, select the user interface component that you want to remove.
- 2 Invoke the context menu and choose **Ajax Developer > Remove**.

A dialog appears, indicating that the user interface component has been removed from the web application.

Cleaning User Interface Components

When you clean a user interface component, files such as **.html*, **.access* and **.NS8*, which have been generated for the layouts in the selected user interface component, are removed.

▶ To clean a user interface component

- 1 In the **Navigator** view, select the user interface component that you want to clean.
- 2 Invoke the context menu and choose **Ajax Developer > Clean**.

Building User Interface Components

When you build a user interface component, HTML files are generated for the XML layout definitions. For pages of type NATPAGE, the adapters (**.NS8* files) are also generated. This is helpful, for example, if you have previously cleaned the user interface component.

When an HTML file does not exist, it is generated. When an HTML file already exists, it is regenerated using the latest information from the XML layout definition.



Note: When you save a layout with the Layout Painter for the first time, an HTML file is automatically generated (in addition to the XML file).

▶ To build a user interface component

- 1 In the **Navigator** view, select the user interface component that you want to build.
- 2 Invoke the context menu and choose **Ajax Developer > Build**.

Refreshing User Interface Components

In rare situations, it may happen that the configuration files of the web application are not in sync with the existing user interface components in your project. This may happen, for example, when a user interface component is created in a new workspace before the initialization of the **Development** web application is finished.

In these cases, you can refresh the user interface components to synchronize the configuration files of the web application with the user interface components. If the user interface components are already in sync, the commands described below will not apply any changes.

▶ To refresh all user interface components in a project

- 1 In the **Navigator** view, select the project in which you want to refresh the user interface components.
- 2 Invoke the context menu and choose **Ajax Developer > Refresh User Interface Components**.

▶ To refresh a single user interface component

- 1 In the **Navigator** view, select the user interface component that you want to refresh.
- 2 Invoke the context menu and choose **Ajax Developer > Refresh**.

Working With Version Control Systems

Eclipse provides fully integrated support for version control systems such as CVS or Subversion (SVN) via corresponding plug-ins.

The following topics are covered below:

- [Checking In Projects and User Interface Components](#)
- [Checking Out Projects and User Interface Components](#)

Checking In Projects and User Interface Components

You have to check in the following Ajax Developer-specific files and folders of a project:

- The file *com.softwareag.cis.ide.prefs* which is stored in the *.settings* directory of your project.

This file contains the Ajax Developer-specific settings for this project (for example, whether this project has a root folder for the user interface components). To be able to simply check out a project into a new workspace and be able to work with the project immediately without having to reenter any configuration settings, you have to check in this file.

- The following files in the individual user interface components:

File Type	Description
Page Layouts	The page layouts are stored in the <i>xml</i> subdirectory of your user interface component.
Translation Information	If using the standard multi language management, literal translations are stored in comma-separated files in the <i>multilanguage</i> subdirectory of your user interface component.
Help Texts	If using the standard online help management, help texts are stored in the <i>help</i> subdirectory of your user interface component.
Other Web Resources	Images, style sheets or additional HTML pages are often used in user interface components. For example, your user interface component may have an <i>images</i> subdirectory which contains all GIF and JPG files.
Configuration Files	The file <i>.cisapplication</i> and, if it exists, the file <i>ciseditorconfig.xml</i> .

Do not check in the following files and folders (you can see them, for example, when you switch to the Resource perspective):

- Do not check in the **.html* and **_SWT.xml* files which are stored in the root directory of your user interface component.
- Do not check in any *ZZZZZZ** files (that is, any files which start with "ZZZZZZ"). These are temporary files that are used by the Layout Painter.
- Do not check in derived folders. Some folders of a user interface component such as *accesspath*, *wSDL* and *protocol* are marked as "derived" in the folder properties. Version control systems such as CVS and Subversion automatically ignore derived folders during check-in. This is important because these files are automatically generated when you build your project.

To ignore the first two file categories listed above, you can either add them to *.cvsignore* or *svn:ignore* (depending on the version control system you are using), or you can simply **clean the user interface component** before you synchronize with your repository.

Checking Out Projects and User Interface Components

If you have checked in all files and folders described above, you can simply check out the project, including the user interface components, into a new workspace. The user interface components are automatically added to the internal Tomcat of this workspace.

After a check-out, it is recommended that you rebuild the project using the **Clean** command from the **Project** menu. If the **Build Automatically** command in the **Project** menu is currently not active, make sure that **Start a build immediately** is switched on in the **Clean** dialog box.

Using the Ajax Developer Perspective

Ajax Developer provides its own perspective which contains the views which are important for editing layouts. The positions and sizes of the views are optimized for developing and testing the layout pages.




Note: When NaturalONE is installed, it is not mandatory to use the Ajax Developer perspective. You can also use the NaturalONE perspective. However, with the Ajax Developer perspective, the **Properties** view for modifying the properties of a page layout, for example, is shown with a convenient size and position.

▶ To open the Ajax Developer perspective

- From the **Window** menu, choose **Open Perspective > Ajax Developer**.

The corresponding icon is then shown on the perspective bar.



 **Note:** By clicking the corresponding icon in the perspective bar, you can quickly switch between the NaturalONE perspective and the Ajax Developer perspective.

3

Layout Painter

The Layout Painter is the central tool for layout development. You use it to specify the layouts of your HTML pages. The Layout Painter includes an active WYSIWYG preview in which you can test your applications.

The description of the Layout Painter is organized under the following headings:

- **Getting Started with the Layout Painter**
- **Defining the XML Layout**
- **Using the Code Assistant**
- **Using the Literal Assistant**
- **Using the Validation Rules Editor**
- **Using the Formula Editor**

4 Getting Started with the Layout Painter

- General Information 24
- Creating a Layout 24
- Layout Templates 26
- Opening an Existing Layout 26
- Elements of the Layout Painter 27

General Information

Ajax Developer follows the commonly accepted paradigm of separating the layout (view) as much as possible from the application logic (model). You design the layout using the WYSIWYG Layout Painter. The result is kept in an XML page layout file. When you save the XML page layout, an HTML page is generated.

On the one hand, the XML layout contains the used controls of a page; on the other hand, it keeps information about how these controls are bound to the application code.

If you implement your application in Natural, the controls are bound to a Natural adapter. The Natural adapter is generated as soon as you save the page layout. The Natural adapter becomes part of the Natural application and forms the interface between the Natural application code and the user interface.

If you implement in Java, the controls are bound to the properties and methods of a Java adapter. This is a Java class that you can generate with the Code Assistant (which is part of the Layout Painter).

In addition, the XML layout may optionally contain so called “literals”. Literals are text identifiers (text IDs) that are replaced at runtime with language-specific texts. For each language you want to support, there must be a comma-separated value (CSV) file that contains the language-specific text per literal. You maintain these translation files using the Literal Assistant (which is part of the Layout Painter).

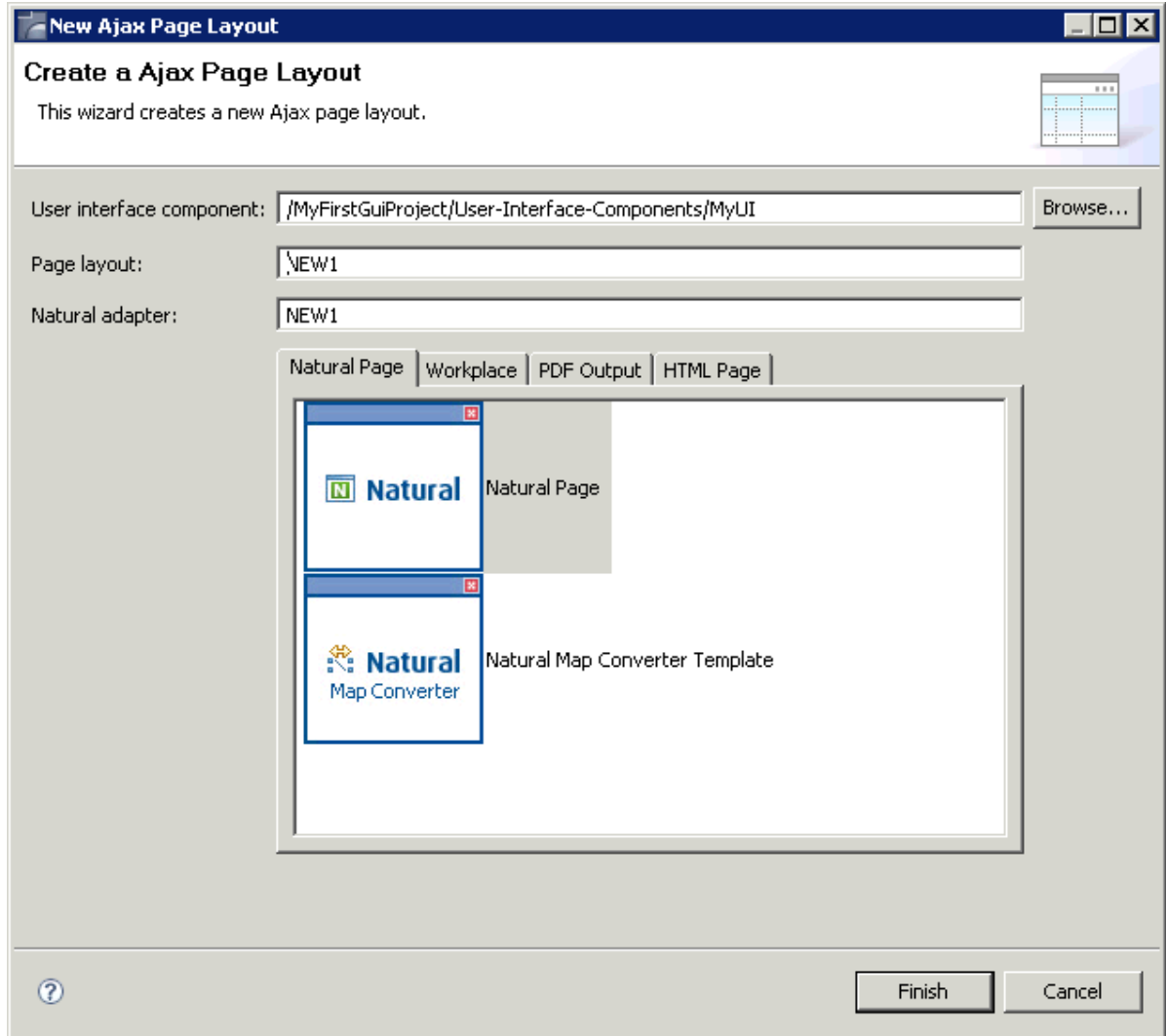
Creating a Layout

The layouts that you create as described below are stored in the *xml* folder of the user interface component.

► To create a layout

- 1 In the **Navigator** view, select the user interface component or the *xml* folder.
- 2 From the **File** menu, choose **New > Page Layout**.

The following dialog box appears, providing several tabs from which you can select a layout template.



- 3 In the **Layout page** text box, enter the name of the file that is to contain your layout definition. Do not specify an extension; the extension ".xml" will automatically be added.

The **Natural adapter** text box is only visible when the **Natural Page** tab is currently selected. Here, you enter the name of the Natural adapter that will be generated when you save the page layout. This name must match the naming conventions for Natural objects.

- 4 Select the layout template for your page. See also [Layout Templates](#).
- 5 Choose the **Finish** button.

The Layout Painter appears (see [below](#)).

Layout Templates

When you create a layout, you have to select a layout template. The following types of layout templates are available:

- **Natural Page**

These templates are used to create pages for Natural for Ajax. They have the NATPAGE control as the top node. See the NaturalONE documentation for further information.

- **Workplace**

These templates are used for arranging Application Designer pages in a frameset. They have the MFPAGE control as the top node. See *Multi Frame Pages* in *Working with Pages* for further information.

- **PDF Output**

This template is used for integrating a PDF document into an Application Designer page. It has the CISFO:FOPPAGE2 control as the top node. See *PDF and FOP Services* for further information.

- **HTML Page**

Different templates are available which have the PAGE control as the top node. See *Typical Page Layout* in *Layout Elements* for further information.

Opening an Existing Layout

Layouts are stored in the *xml* folder of the user interface component. They have the extension *.xml*.

- ▶ **To open a layout**

- In the **Navigator** view, double-click the layout that you want to open.

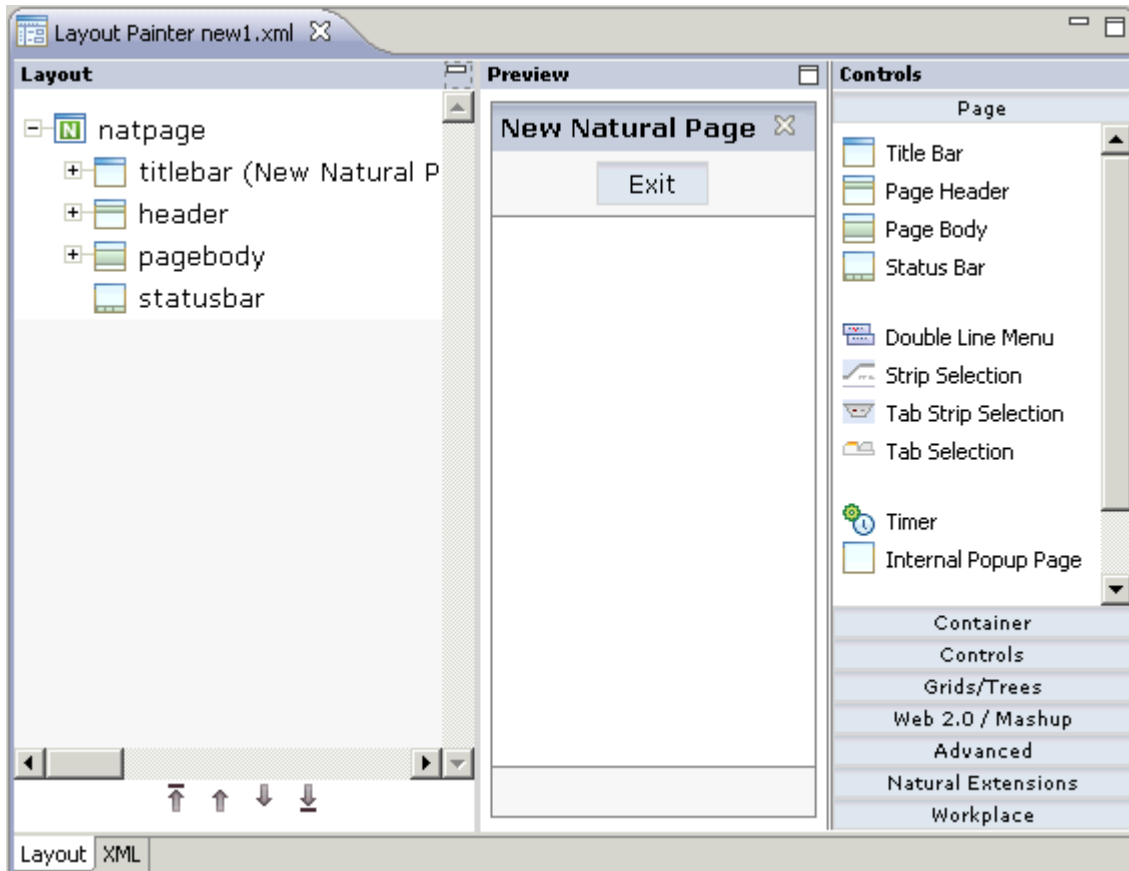
Or:

Invoke the context menu for the layout and choose **Open With > Layout Painter**

The Layout Painter appears (see [below](#)).

Elements of the Layout Painter

The Layout Painter appears when you **create** a new layout or when you **open** an existing layout.



The Layout Painter is divided into several areas:

- **Layout Area (left side)**

This area shows the layout tree which contains the controls that represent the XML layout definition. You drag these controls from the controls palette into the layout tree. Each node in the layout tree represents an XML tag.

Using the button which is located to the right of the title bar, you can hide the layout area. This enlarges the preview area. To redisplay the layout tree, choose the small arrow which is shown in the left of the preview area's title bar.

- **Preview Area (middle)**

The preview area shows the page which is created using the controls in the layout area. This page is refreshed each time, you choose the **Refresh Preview** command (see below).

Using the toggle button which is located to the right of the preview area's title bar, you can enlarge the preview area so that it takes up the space of the layout area and controls palette, and reduce the enlarged preview area so that the layout area and controls palette are shown again.

■ **Controls Palette (right side)**

Each control is represented by an icon. A tool tip is provided which appears when you move the mouse pointer over the control. This tool tip also displays the XML tag which will be used in the XML layout.

The controls palette is structured into sections (for example, **Page** and **Container**), where each section represents certain types of controls.



Note: The sections that are shown in the controls palette and the content of a section depend on the layout template that is used for the current layout.

When you select a control in the layout tree or in the preview area, the properties for this control are shown in the **Properties** view. You can modify the properties as required.

When the Layout Painter is active, the additional menu **Ajax Developer** is shown in the menu bar. Using this menu, you can invoke additional tools which are helpful for the creation of layouts:

■ **Code Assistant**

Only used for developing page layouts in Java. Helps you to generate code for all properties and methods which are explicitly referenced in the page layout. See [Code Assistant](#) for further information.

■ **Literal Assistant**

Helps you to prepare your layout for multiple languages. You can maintain texts of different languages for the literals that are referenced within the XML layout. See [Literal Assistant](#) for further information.

■ **Validation Rules Editor**

You can define that the value that is entered in a field must meet certain conditions. See [Using the Validation Rules Editor](#) for further information.

■ **Formula Editor**

You can define a formula for a field (for example, the sum of the fields A and B is to be shown in field C). See [Using the Formula Editor](#) for further information.

Some commands of the **Ajax Developer** menu (such as **Refresh Preview**) are also available as buttons in a toolbar.



5 Defining the XML Layout

- Previewing the Layout 32
- Setting the Properties for a Control 35
- Changing the Appearance of Text 36
- Adding Controls to the Layout 37
- Creating a Folder for Images 39
- Defining a Background Image 39
- Defining a Style Sheet 40
- Defining Hotkeys 41
- Managing the Nodes in the Layout Area 42
- Managing the Controls in the Preview Area (SWT Only) 45
- Viewing the XML Code 46
- Viewing the Layout Painter Protocol 46
- Saving the Layout 47
- Viewing the XML to HTML Generation Log 48
- Layout Tester 48

Previewing the Layout

If you want to find out how the current layout definitions are rendered on the page, you can preview the layout. The preview of the layout is shown in the preview area. For example:



The preview area is a sensitive area. When you select a control in the preview area (for example, the title bar), this control is automatically selected in the layout tree.

▶ To preview the layout

- From the **Ajax Developer** menu, choose **Refresh Preview**.

Or:

Choose the following button from the Ajax Developer toolbar:



The preview area is updated according to the defined preview mode (see [below](#)).

If the system finds wrong definitions, a message is displayed in the **Problems** view. You can view the protocol to display more information about the problems that occurred when generating the preview page. See [Viewing the Layout Painter Protocol](#).

Changing the Preview Mode

There are two different preview modes:

Run Application

This is the default setting.

For page layouts other than NATPAGE layouts, the latest changes to the adapter class are used when you preview your layout.

For NATPAGE layouts, only generic Java-side classes, which are part of the Application Designer framework, are used for the preview. The Natural adapter itself is not run. To run a NATPAGE layout with the Natural adapter, you use the **NaturalONE > Execute** command with the corresponding Natural program.

Screen Test Only

For page layouts other than NATPAGE layouts: When the name of an adapter class has not been defined in the `model` property of the page, or when an adapter class has been defined which does not yet exist, an error screen is shown when you try to preview your layout. In this case, you have the possibility to activate **Screen Test Only**. Your layout will then be loaded with an empty adapter. This means that you will not have any functionality. Any changes that you make in your Java development environment will not be reflected in the preview.

For NATPAGE layouts: Instead of the generic Java-side classes of the Application Designer framework, which are executed when you choose **Run Application**, the layout is loaded with the same empty adapter as described above for non-NATPAGE layouts. For NATPAGE layouts, **Screen Test Only** is only used for troubleshooting. If **Run Application** fails, you can use **Screen Test Only**, for example, to verify whether Java Scripting and the basic Application Designer framework are able to load the page layout properly.

▶ To change the preview mode

- From the **Ajax Developer** menu, choose **Preview Mode > mode**, where *mode* is one of the preview modes described above.

Changing the Display Mode

When you change the display mode, this is immediately considered in the preview area.

By default, the layout display mode as defined in the **project properties** is used. However, by choosing a different display mode (HTML or SWT) from the **Ajax Developer** menu, you can temporarily change the preview without having to change the settings in the project properties.

The menu provides for selection the following display modes:

HTML

When this display mode is active, the preview is shown as in the browser.

SWT

When this display mode is active, the preview is shown as in the SWT client.

Project Settings

This is the default setting. When this display mode is active, the corresponding settings from the project properties are used.

▶ To change the display mode

- From the **Ajax Developer** menu, choose **Display Mode** > *mode*, where *mode* is one of the display modes described above.

Previewing the Layout in a New Browser Window

You can display and test the current layout, which is normally shown in the preview area, in a separate browser window. The browser shows the URL that is used to invoke this page.

▶ To preview the layout in a new browser window

- From the **Ajax Developer** menu, choose **Preview in New Browser Window**.

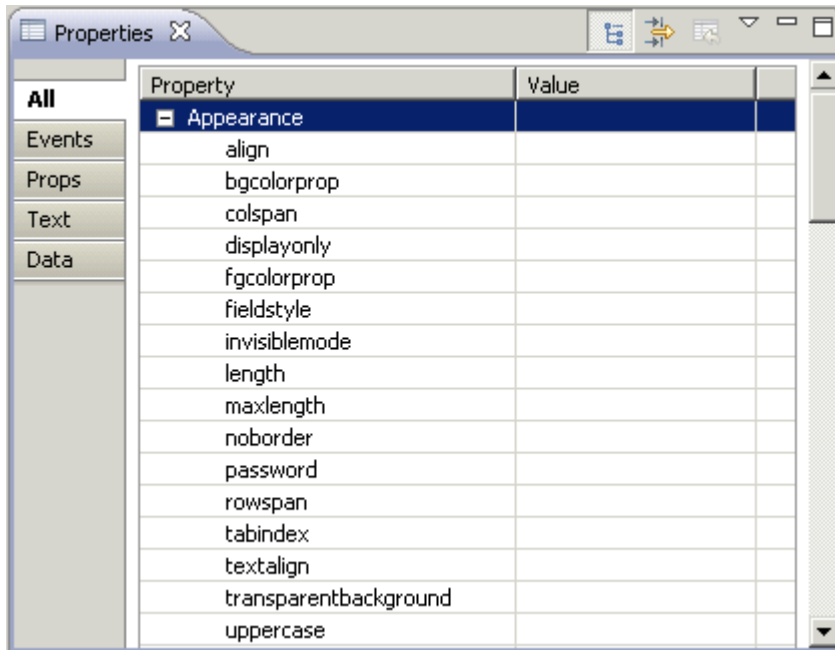
Or:

Choose the following button from the Ajax Developer toolbar:



Setting the Properties for a Control

When you select a control in the layout area or in the preview area, its properties are shown in the **Properties** view and you can edit them immediately. Example:



The **All** tab is always provided for all controls. The availability of other tabs depends on the control which is currently selected.

The **Props** tab is only shown when the control has `*prop` properties (such as `visibleprop`), and the **Events** tab is only shown when the control has `*method` properties (such as `contextmenu`). These tabs are provided for your convenience. They show the properties which bear a reference to the program code. However, the properties that are shown on these tabs are also shown on the **All** tab.

When it is possible to change, for example, the font for text on a control, the **Text** tab is available. For further information, see [Changing the Appearance of Text](#).

The **Data** tab is only shown for field controls. It shows any validation rules or formulae that have been defined for the field. Using the corresponding **Edit** button, you can invoke either the validation rules editor or the formula editor. For further information, see [Using the Validation Rules Editor](#) or [Using the Formula Editor](#).

▶ To set a property using the Properties view

- 1 Select the control in the layout area or in the preview area.

The properties for the selected control are now shown in the **Properties** view. For some properties, default values are provided.

- 2 Specify the value for the required property.

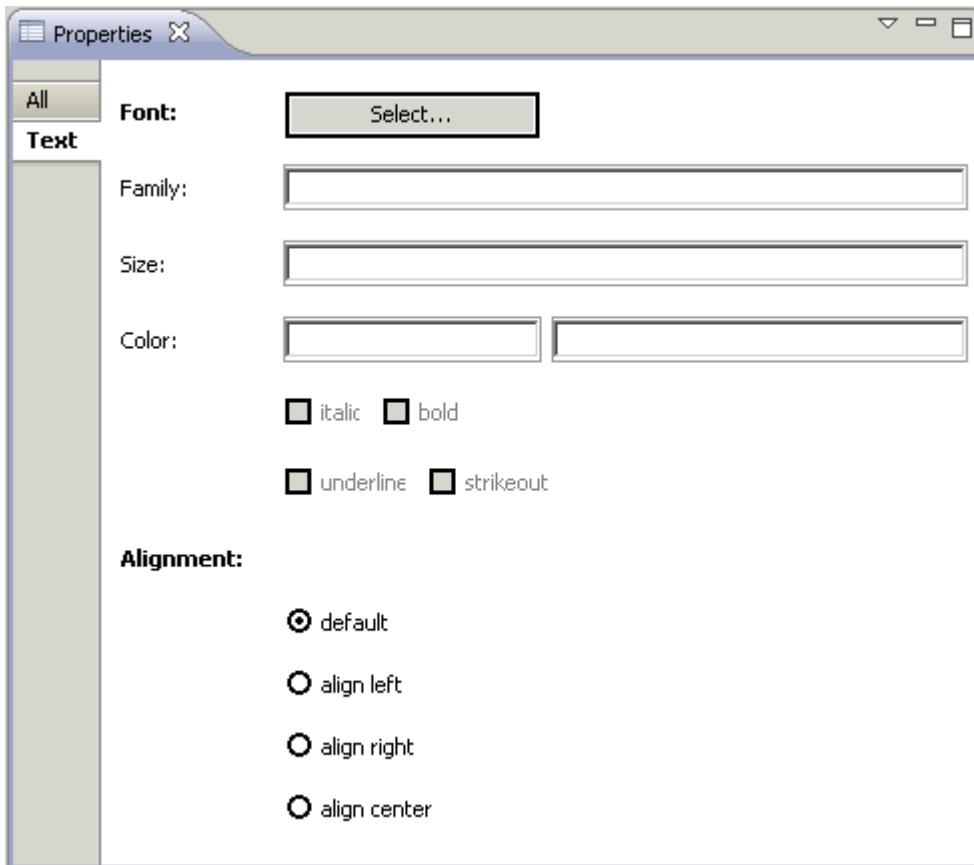


Note: The values of some important properties (for example, the `name` or `textid` of the **Title Bar** control) are shown in the layout area, in round brackets after the XML tag. If you modify the value of such a property, the changed value will be shown in the layout area.

Changing the Appearance of Text

Instead of setting the corresponding property for a control, you can change the appearance of text (for example, on a button) using the **Text** tab of the **Properties** view. This tab is available for all controls for which the appearance of text can be changed.

The **Text** tab provides for selection only those options which make sense with the selected control. Example for a button:



▶ **To change the appearance of text**

- 1 Select the control in the layout area or in the preview area.
- 2 Select the **Text** tab of the **Properties** view.
- 3 Choose the **Select** button.

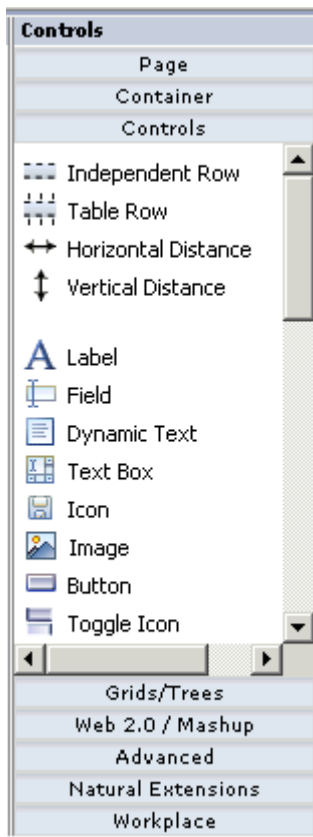
A dialog appears in which you can specify all required settings (such font family, font color or italics). These settings are then automatically entered on the **Text** tab.

- 4 If you want to change the alignment, select the corresponding option button.

Your changes are immediately shown in the preview area.

Adding Controls to the Layout

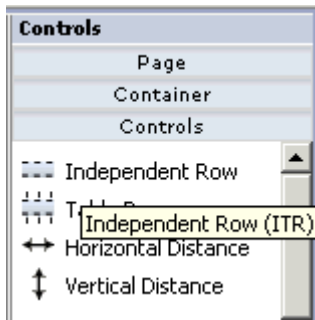
The controls that you can add to the layout can be found in the various sections of the controls palette. You simply drag them from the controls palette onto the corresponding node in the layout area or to the preview area. The preview area is immediately refreshed.



► **To add a control to the layout**

- 1 Open the required section of the controls palette by choosing the corresponding button (for example, the **Controls** button).


When you move the mouse over a control, a tool tip appears which also displays the control name which will be used in the XML layout. For example:



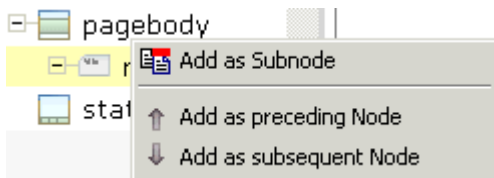
- 2 Drag the control from the controls palette onto the required node in the layout area.

Or:

Drag the control from the controls palette and drop it in the preview area.

 **Note:** A control can only be inserted at a valid position. Thus, it may happen that the control is not inserted in the node which was highlighted when you dropped the control, but at a different position.

When you drop information, the system will sometimes respond by offering a context menu with certain options about where to place the control. Depending on the current context, different commands are available. For example:



The new node is automatically selected in the layout area so that you can maintain its properties directly in the **Properties** view

Creating a Folder for Images

All resources that your user interface component needs (such as images) must be contained in your project directory in the Eclipse workspace. It is good practice to create a specific folder for these resources.

▶ **To create a folder for images**

- 1 In the **Navigator** view, select the user interface component for which you want to create a folder.
- 2 Invoke the context menu and choose **New > Folder**.
- 3 In the resulting dialog box, specify a folder name (for example, "images").
- 4 Choose the **Finish** button.
- 5 Place all images that you want to use in the images folder that you have just created.

Defining a Background Image

You can define a background image for your page. The image must be a file with the extension *gif*, *jpeg* or *jpg*.

▶ **To define a background image**

- 1 Select a control for which a background image can be set.



Note: When a background image cannot be set for a control, the **Insert Background Image** command is disabled.

- 2 From the **Ajax Developer** menu, choose **Insert Background Image**.

Or:

Choose the following button from the Ajax Developer toolbar:



A dialog appears.

- 3 Select the image file from your images folder (see also [Creating a Folder for Images](#)).

The path to the image will automatically be converted to a relative path.

- 4 Choose the **Open** button.

The correct relative URL is automatically set in the corresponding property. In different controls, different properties are used to support background images. Background images are supported, for example, by the `pagebodystyle` property of the PAGEBODY control and the `titlestyle` property of the TITLEBAR control.

The correct style definition including the relative URL for the background image file is automatically set in the corresponding property. For example:

```
background-image:url(images/absbackground_small.gif)
```

Defining a Style Sheet

You can assign a style sheet to your page. This can either be a predefined style sheet or one of your own style sheets that you have created using the [Style Sheet Editor](#). The style sheet must be a file with the extension `css`.

Instead of setting the corresponding property for the page (see *Static Selection of the Style Sheet File in Special Development Topics*), you can define a style sheet as described below.

▶ To define a style sheet

- 1 From the **Ajax Developer** menu, choose **Insert Style Sheet**.

Or:

Choose the following button from the Ajax Developer toolbar:



A dialog appears.

- 2 Specify the path to your style sheet.

You have to specify a style sheet from your local file system. The file must be located in the same directory as your web application (or any subdirectory). When you specify an absolute path, this will automatically be converted to a relative path.


Defining Hotkeys

You can assign hotkeys to pages and to the controls FIELD and ROWTABLEAREA2. For example, you can define the hotkey CTRL+S for calling the method `onSave`.

See also *Extended Hot Key Management* in the *Special Development Topics*.

▶ To define hotkeys

- 1 Select the control in the layout area or in the preview area.

 **Note:** When a control is selected for which hotkeys cannot be defined, your hotkey definition will apply to the page.

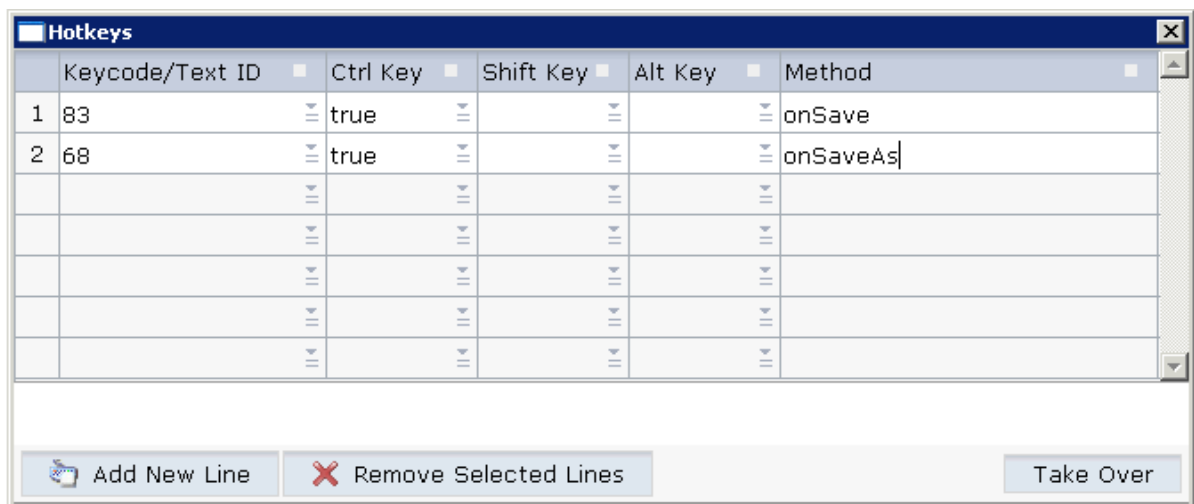
- 2 From the **Ajax Developer** menu, choose **Insert Hotkeys**.

Or:

Choose the following button from the Ajax Developer toolbar:



A dialog appears. When hotkeys have already been defined, they are shown. Example:



- When hotkeys have already been defined, choose the **Add New Line** button to add an additional hotkey.



Note: To remove a hotkey, select the corresponding row and choose the **Remove Selected Lines** button.

- From the drop-down list box in the first column, select the key that you want to use as a hotkey. For example, "83" represents the s key and "120" represents the F9 key.

Or:

In the text box of the drop-down list box in the first column, enter a text ID that is to be translated by the multi language management.

- Define each key (CTRL, SHIFT and/or ALT) which is to be used for the hotkey by selecting "true" from the corresponding drop-down list box.



Note: If neither "true" nor "false" is selected for a key, the default setting "false" is used.

- In the **Method** column, specify the name of the method that is to be invoked when the user presses the hotkey.
- When all hotkeys have been defined, choose the **Take Over** button.





Managing the Nodes in the Layout Area

The following topics are covered below:

- [Moving Nodes](#)
- [Using the Clipboard](#)
- [Drag-and-Drop](#)
- [Context Menus](#)

Moving Nodes

You can manage the nodes in the layout area using the following buttons which are shown below the layout tree:

Button	Description
	Moves the selected node up to first position in the tree.
	Moves the selected node up to the previous position in the tree.
	Moves the selected node down to the next position in the tree.
	Moves the selected node down to last position in the tree.

When an operation is not allowed, clicking on the corresponding button has no effect.

Using the Clipboard

You can manage the nodes in the layout tree using the following commands from the **Edit** menu of Eclipse:

Command	Description
Cut	Cuts the selected node.
Copy	Copies the selected node.
Delete	Deletes the selected node.
Undo	Undoes the previous action. The previous action can be, for example, a move operation or a changed property value.
Redo	Redoes the previous undo action.



Note: To copy and paste information in the **Properties** view, use the key combinations CTRL+C and CTRL+V.

Drag-and-Drop

In the layout area, you copy or move the nodes using drag-and-drop.

▶ To copy or move a node using drag-and-drop

- 1 In the layout area, select the node you want to move so that it is highlighted.


Press SHIFT or CTRL, if you want to select more than one node.

- 2 Press the left mouse button and keep it pressed.
- 3 Drag the mouse to the target node.


While you drag the mouse, a tool tip in light colors is shown for the node(s) you are currently dragging.

- 4 Release the mouse button.

A context menu appears and you have choose the location where you want to place the copy or the moved item (for example, in front of the target node).

 **Note:** When the copy or move operation is not allowed, the context menu does not appear.

5 Choose the required command from the context menu.

 **Note:** To cancel the drag process, move the mouse outside the context menu. The context menu will disappear and any selected nodes will keep their current position.

Context Menus

You can manage the nodes in the layout tree using context menus. The following commands may appear in a context menu:

Command	Description
Add as first Subnode	Adds a control as the first subnode of the selected node. A cascading menu is available for this command, containing all controls that can be added as a subnode of the selected node.
Add as last Subnode	Adds a control as the last subnode of the selected node. A cascading menu is available for this command, containing all controls that can be added as a subnode of the selected node.
Add as preceding Sidenode	Adds a control before the selected node, on the same level as the selected node. A cascading menu is available for this command, containing all controls that can be added as a sidenode of the selected node.
Add as subsequent Sidenode	Adds a control after the selected node, on the same level as the selected node. A cascading menu is available for this command, containing all controls that can be added as a sidenode of the selected node.
Cut	Cuts the selected node.
Copy	Copies the selected node.
Paste as first Subnode	Pastes the cut or copied node as the first subnode of the selected node.
Paste as last Subnode	Pastes the cut or copied node as the last subnode of the selected node.
Remove	Deletes the selected node.
Open all Subnodes	Opens all subnodes of the selected node.
Close all Subnodes	Closes all subnodes of the selected node.

Managing the Controls in the Preview Area (SWT Only)

When the display mode has been set to SWT, you can manage controls directly in the preview area.

When you select a control in the preview area, it is highlighted with a different color in the layout area. This indicates that you can copy, move or resize the control.

The following topics are covered below:

- [Moving and Copying Controls in the Preview Area](#)
- [Resizing Controls in the Preview Area](#)

Moving and Copying Controls in the Preview Area

You can move or copy a control or groups of controls directly in the preview area.



Note: To select more than one control, press CTRL while selecting the controls.

▶ To move controls in the preview area

- 1 Select the controls that you want to move.
- 2 Drag the controls to a new valid position.

▶ To copy controls in the preview area

- 1 Select the controls that you want to copy.
- 2 Press CTRL and drag the controls to a valid position at which it is possible to insert the copies.

Resizing Controls in the Preview Area

You can set the width and/or height of a control directly in the preview area.

▶ To resize a control in the preview area

- 1 Select the control that you want to resize.
- 2 Move the mouse pointer over the dashed border of the selected control.

The mouse pointer changes, indicating that you can start the resizing.

- 3 Press the mouse button and drag the border until the control has the desired width or height.
- 4 Release the mouse button.

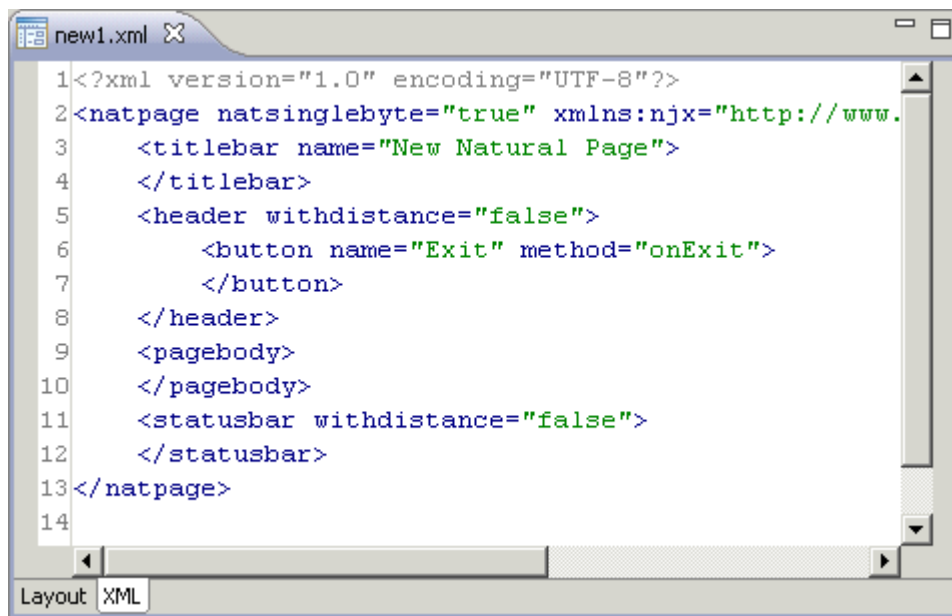
Viewing the XML Code

When creating the layout, you can view the currently defined XML code at any point of time.

▶ **To view the XML code**

- Choose the **XML** tab which is shown at the bottom of the Layout Painter.

Information such as the following is shown:

A screenshot of an Eclipse IDE window titled 'new1.xml'. The window displays XML code for a page layout. The code is as follows:

```
1 <?xml version="1.0" encoding="UTF-8"?>
2 <natpage natsinglebyte="true" xmlns:njx="http://www.
3   <titlebar name="New Natural Page">
4   </titlebar>
5   <header withdistance="false">
6     <button name="Exit" method="onExit">
7     </button>
8   </header>
9   <pagebody>
10  </pagebody>
11  <statusbar withdistance="false">
12  </statusbar>
13 </natpage>
14
```

The window has a tab at the bottom labeled 'XML' and a 'Layout' tab is also visible.

Note: The properties which you leave blank in the **Properties** view are not shown in the XML code.

Viewing the Layout Painter Protocol

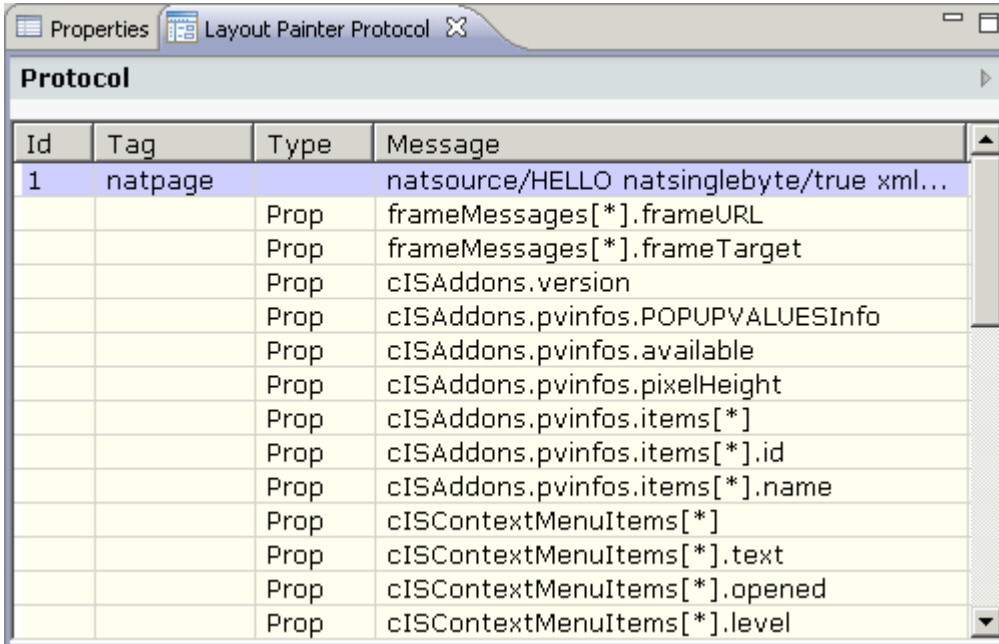
When you save the page layout or build your project, errors and warnings are shown in the **Problems** view, which is a standard Eclipse view. An error occurs, for example, when a value has not been set for a mandatory property. When you click an error or warning, the control containing the error is selected.

As an alternative to the **Problems** view, you can list the errors and warnings for the current layout in the **Layout Painter Protocol** view. The protocol lists additional information about the controls in the order in which the controls were found in the page layout.

► To view the protocol

- From the **Ajax Developer** menu, choose **Show Protocol**.

The protocol is shown in the **Layout Painter Protocol** view.



The screenshot shows the 'Layout Painter Protocol' window. It contains a table with the following data:

Id	Tag	Type	Message
1	natpage		natsource/HELLO natsinglebyte/true xml...
		Prop	frameMessages[*].frameURL
		Prop	frameMessages[*].frameTarget
		Prop	cISAddons.version
		Prop	cISAddons.pvinfos.POPUPVALUESInfo
		Prop	cISAddons.pvinfos.available
		Prop	cISAddons.pvinfos.pixelHeight
		Prop	cISAddons.pvinfos.items[*]
		Prop	cISAddons.pvinfos.items[*].id
		Prop	cISAddons.pvinfos.items[*].name
		Prop	cISContextMenuItems[*]
		Prop	cISContextMenuItems[*].text
		Prop	cISContextMenuItems[*].opened
		Prop	cISContextMenuItems[*].level

When you select an entry in the **Layout Painter Protocol** view, the corresponding control is automatically selected in the layout tree.

Saving the Layout

When you save the layout, all of your changes in the Layout Painter are saved.

When you save a layout for the first time, an HTML file is generated (in addition to the XML file) which is placed into the root directory of your application project. This HTML file is updated each time you save the layout.

For NATPAGE layouts, the corresponding Natural adapter is also generated.



Note: When you save the page, the **preview area** is automatically updated.

► To save the page

- Use the standard Eclipse functionality for saving (for example, CTRL+S).

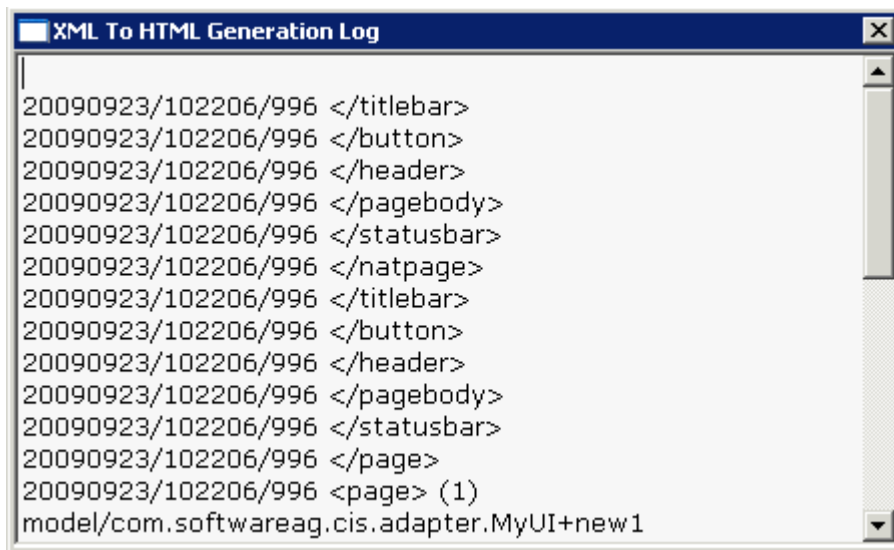
Viewing the XML to HTML Generation Log

You can display information on the controls that have been written to the generated HTML page.

▶ **To view the log**

- From the **Ajax Developer** menu, choose **Show Log**.

A dialog appears. For example:



Layout Tester

The layout tester can be used to test the currently defined layout according to the display mode which is defined in the properties of the project: it is either shown as in the browser or as in the SWT client.

▶ **To invoke the layout tester**

- 1 Select the layout in the **Navigator** view.
- 2 Invoke the context menu and choose **Open With > Layout Tester**.

6 Using the Code Assistant

▪ About the Code Assistant	50
▪ Code Template	50
▪ Opening the Code Assistant	50
▪ Code Introspection	51
▪ Generating the Code	52
▪ Editing the Adapter Code	53
▪ Saving Changes	54
▪ Changes from the Outside	54

About the Code Assistant

The Code Assistant only applies to PAGE layouts.

When developing page layouts in Java, automatic code modifications do not occur. For example, when you set the `valueprop` property in a FIELD control, the `set()` and `get()` methods are not automatically created in the underlying Java adapter class. Using the Code Assistant, however, you can generate code for all properties and methods which are explicitly referenced in the page layout. The compilation of the modified adapter class itself is done in your Java development environment (for example, in Eclipse).

When developing page layouts in Natural, the corresponding Natural code for the properties and methods is automatically generated when you **build a user interface component**, when you build your project in Eclipse, or when you simply **save** a modified layout in Eclipse and the **Build Automatically** command in the **Project** menu is activated. Therefore, the Code Assistant is not required for NATPAGE layouts and the corresponding menu commands are disabled.

Code Template

Before you open the Code Assistant, make sure that the `model` property of the page contains the correct adapter class. The default entry for this property is "DummyAdapter".

The Code Assistant looks in the source directory for the adapter class you have set with the `model` property. If the class cannot be found, the Code Assistant loads a code template.

The code template is stored in the directory `<your-webapplication>/cis/config`. For NaturalONE, this is usually `<webcontainerinstalldir>/webapps/cisnatural/cis/config`. Otherwise, it is usually `<webcontainerinstalldir>/webapps/cis/cis/config`.

The name of the code template is `adapterTemplate.java`. You can change this template according to your needs.

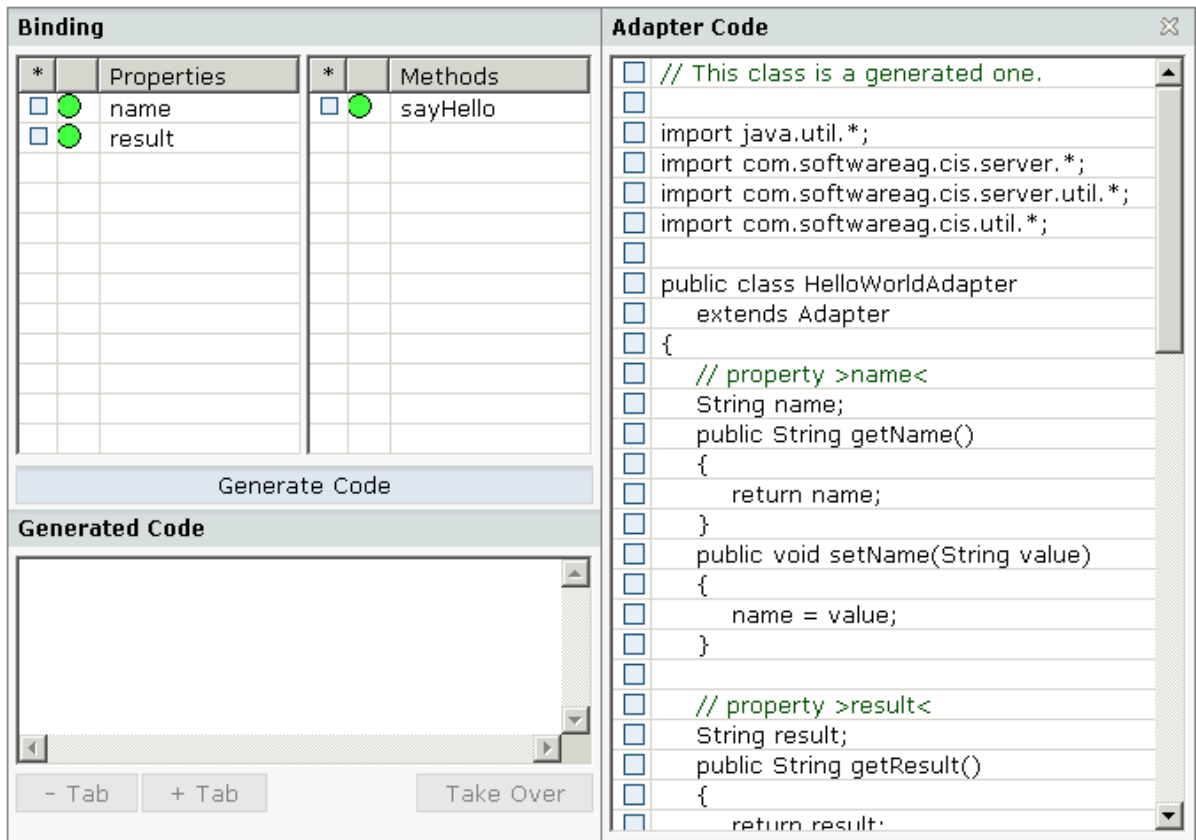
Opening the Code Assistant

In order to read and write source code, the Code Assistant needs to know where the Java sources are kept. This information is stored in the file `ciseditorconfig.xml` of each user interface component. When working with Eclipse, a `src` subdirectory is automatically created in each user interface component and applied as a Java source directory to your Eclipse project. The corresponding settings are automatically saved to the file `ciseditorconfig.xml`.

▶ **To open the Code Assistant**

- From the **Ajax Developer** menu, choose **Open Code Assistant**.

When the Java source directory can be found, the Code Assistant is shown in the preview area. For example:



Code Introspection

The binding area at the top left of the Code Assistant lists all properties and methods that are used in the XML layout. Colored dots are shown in front of each property and method. The color of the dot indicates whether the Code Assistant could find the corresponding coding within your source code.

Introspection is done by reading and interpreting the code. Comments that highlight properties or methods are not necessary.

Possible dot colors for properties:

Green	The property's <code>get</code> and <code>set</code> methods are available.
Yellow	The <code>set</code> method is required but could not be located. The <code>get</code> method is fine.
Red	The <code>get</code> method could not be found.

Possible dot colors for methods:

Green	The method is available.
Red	The method could not be found.

When you select a property or method in the binding area, the properties are shown in the **Properties** view.

In addition, when code has already been generated for the selected property or method (see below), the corresponding line is automatically selected in the adapter code which is shown at the right of the Code Assistant.

Generating the Code

The properties and methods which cannot be found in the adapter code are indicated by red dots.

When you generate code, a framework for the property or method is generated in the adapter code.

▶ To generate code

- 1 Select the property or method for which you want to generate code.

You can also use the `SHIFT` or `CTRL` key to select multiple entries.

- 2 Choose the **Generate Code** button.

The generated code appears in the area below this button.

Check whether you really want to insert these statements into your source code. You can modify or delete the code. Any code that you manually enter here will be taken over.

- 3 Optional. Choose the **+Tab** or **-Tab** button to add or remove a tab at the beginning of the code. This applies to all code which is currently shown in the **Generated Code** area.
- 4 In the **Adapter Code** area on the right, select the line below which you want to insert the code.
- 5 Choose the **Take Over** button to insert the code below the selected line.

The color of the dot changes from red to green. This indicates that the corresponding methods are now available in the adapter code.

6 Save your changes.



Note: It is recommended that you save your changes each time you switch from the Code Assistant to another tool which may be shown in the preview area, and vice versa.

Editing the Adapter Code

You can edit the adapter code in different ways:

- [Editing the Adapter Code in the Java Editor](#)
- [Editing the Adapter Code Directly in the Code Assistant](#)

Editing the Adapter Code in the Java Editor

If you want to apply complex changes to the adapter code, it is recommended that you do this in the Java editor.



Important: Be sure to close the Code Assistant before you open the adapter code in the Java editor.

▶ To invoke the Java editor

- 1 In the Navigator view, select the page layout (that is, the XML file) for which you want to change the adapter code.
- 2 Invoke the context menu and choose **Ajax Developer > Open Java Adapter**.

Or:

When the Layout Painter is still active, open the **Ajax Developer** menu and choose **Open Java Adapter**.

Editing the Adapter Code Directly in the Code Assistant

Instead of invoking the Java editor, you can also apply smaller changes to the adapter code directly in the Code Assistant, while generating the code for the properties and methods.

▶ To edit the adapter code in the Code Assistant

- 1 Select one or more lines in the **Adapter Code** area.

To select more than one line, use CTRL or SHIFT.

- 2 Invoke the context menu and choose one of the following commands:

Command	Description
-Tab	Removes a tab from the beginning of the selected line(s).
+Tab	Adds a tab to the beginning of the selected line(s).
Cut	Cuts the selected line(s).
Copy	Copies the selected line(s).
Paste	Only available after a cut or copy operation. Pastes the cut or copied line(s) below the currently selected line.
Remove	Removes the selected line(s).

Saving Changes

You save the adapter code using the standard Eclipse functionality for saving.



Notes:

1. When editing the adapter code using the Code Assistant, it is recommended that you first close the Code Assistant before you close the Layout Painter.
2. After saving your changes to the adapter code, choose the **Refresh Preview** command so that you can see the changes in the preview area.

Changes from the Outside

Each time you **preview** the layout, the Code Assistant checks whether the file has changed on the file system. Therefore, the file attribute "last modified" is examined (not the file content). If the Code Assistant notices a file change, it checks whether it is holding own unsaved changes. If not, the class code is reloaded from the file system. If you have done changes in parallel (within your Java development environment and the Code Assistant) a dialog appears. Choose either to reload the file from disk (and lose the changes you have done within the Code Assistant) or to keep the Code Assistant changes (and lose the outside changes on the next save).



Note: You have to take care that the following case never occurs: the file has changed on file system and the Code Assistant has its own unsaved changes. Of course, it is reasonable to open the class both in your Java development environment and in the Code Assistant. It is recommended that you save or discard changes before you switch from the Code Assistant to your Java development environment (or vice versa). Otherwise, you will lose one of your changes.

7 Using the Literal Assistant

▪ About the Literal Assistant	56
▪ Opening the Literal Assistant	56
▪ Maintaining Literals	57
▪ Selecting Another Language	58
▪ Displaying a Comparison Language	58

About the Literal Assistant

The Literal Assistant can be used to maintain texts of different languages for the literals that are referenced within the XML layout.

The concept of the multi language management is described in *Multi Language Management*. It is recommended that you read this information before you proceed with the information below.



Note: Text can also be translated using the [Literal Translator](#).

Opening the Literal Assistant

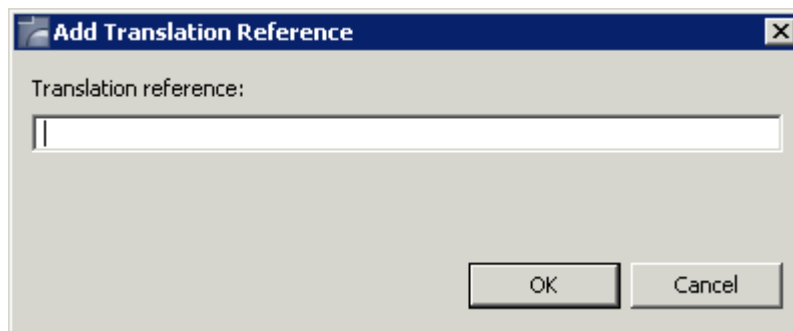
The Literal Assistant needs to know in which file the language-specific texts are kept. The name of this translation file is stored in the `translationreference` property of the page.

See also *Writing Multi Language Layouts in Multi Language Management*.

▶ To open the Literal Assistant

- 1 From the **Application Designer** menu, choose **Literal Assistant**.

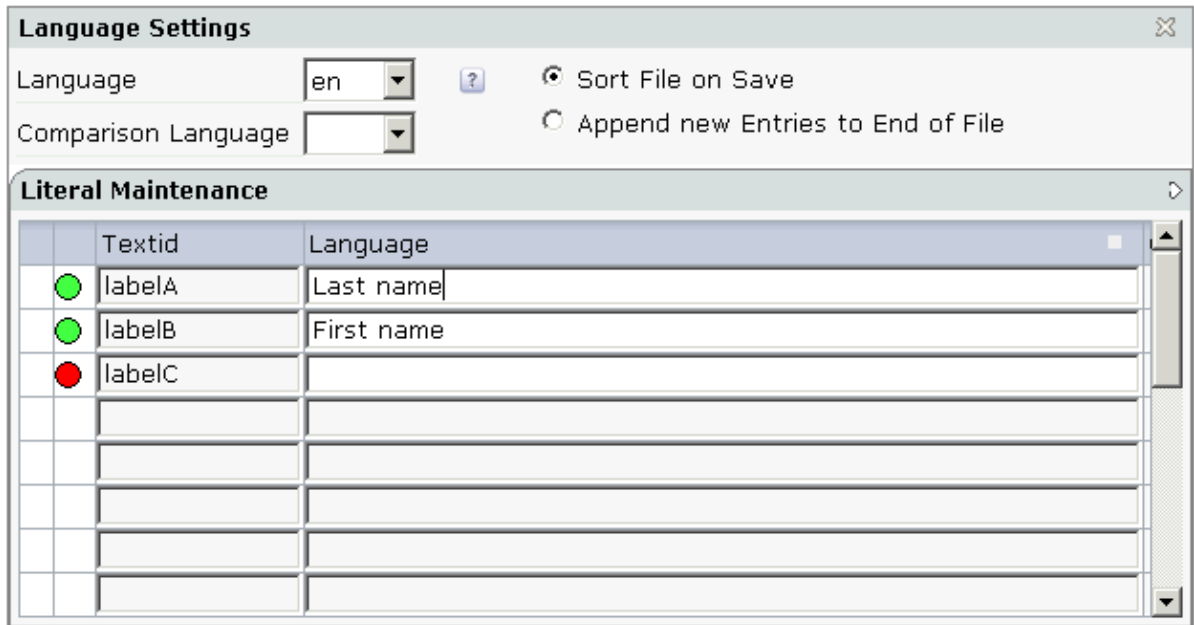
When a translation file has not yet been specified, the following dialog box appears:




- 2 Specify the name of the translation file and choose the **OK** button.

The name you specify is entered in the `translationreference` property.

The Literal Assistant appears in the editor area.



 **Note:** For multi language support, you use the `textid` property for a label (instead of the `name` property).

Maintaining Literals

All referenced literals of the currently selected language are provided in the **Literal Maintenance** area.

Colored dots are shown in front of each literal. The color of the dot indicates whether the Literal Assistant could find the corresponding text in the translation file for the currently selected language.

Possible dot colors:

Green	A text is available in the translation file.
Yellow	The translation file contains a line for the literal - but the text is empty.
Red	The literal (and text) does not yet exist in the translation file.

When you select the first column (that is, the column to the left of the colored dot), the corresponding node is automatically selected in the layout tree and the properties for this node are shown in the **Properties** view.

▶ To add/modify text for the current language

- 1 Enter all required text in the **Language** column.

2 Define the sequence of the entries in the translation file by selecting one of the following option buttons:

- **Sort File on Save** (ascending order)
- **Append new Entries to End of File**

3 Choose the standard Eclipse **Save** command to save your text input.

Your changes will also be available in the preview of the HTML page.

Selecting Another Language

The valid languages are determined by the existing subdirectories in the *multilanguage* directory which belongs to your user interface component. An entry for each subdirectory is provided in the **Language** drop-down list box.



Note: You may have to choose the **Refresh Preview** command to refresh the Literal Assistant so that any subdirectories you have just defined in your file system are shown in the drop-down list box.

▶ To select another language

- From the **Language** drop-down list box, select the required language.

When you have not yet saved your previous changes, a dialog appears asking whether you want to save your changes.



Important: The Literal Assistant keeps changes for one language only. If you want to maintain texts for several languages, save the changes before you switch to another language. Otherwise, you will lose input.

The selected language is shown in the **Language** column of the table.

Displaying a Comparison Language

For comparison purposes, you can display the texts of another translation file in the **Comparison Language** column. The **Comparison Language** drop-down list box contains an entry for each subdirectory in the *multilanguage* directory which belongs to your user interface component.

▶ **To display another language for comparison**

- From the **Comparison Language** drop-down list box, select the required language.

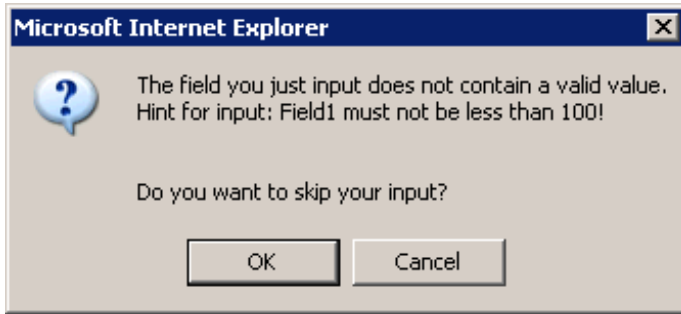
The selected language is shown in the **Comparison Language** column of the table.

8 Using the Validation Rules Editor

- About the Validation Rules Editor 62
- Opening the Validation Rules Editor 62
- Adding a New Validation Rule 63
- Displaying an Overview of All Defined Validation Rules 65

About the Validation Rules Editor

The validation rules editor can be used to define that the value that is entered in a field must meet certain conditions. You can test your validation rule in the preview area. If an invalid value is entered, a corresponding message appears. Example:



 **Important:** The validation is done on the client side.

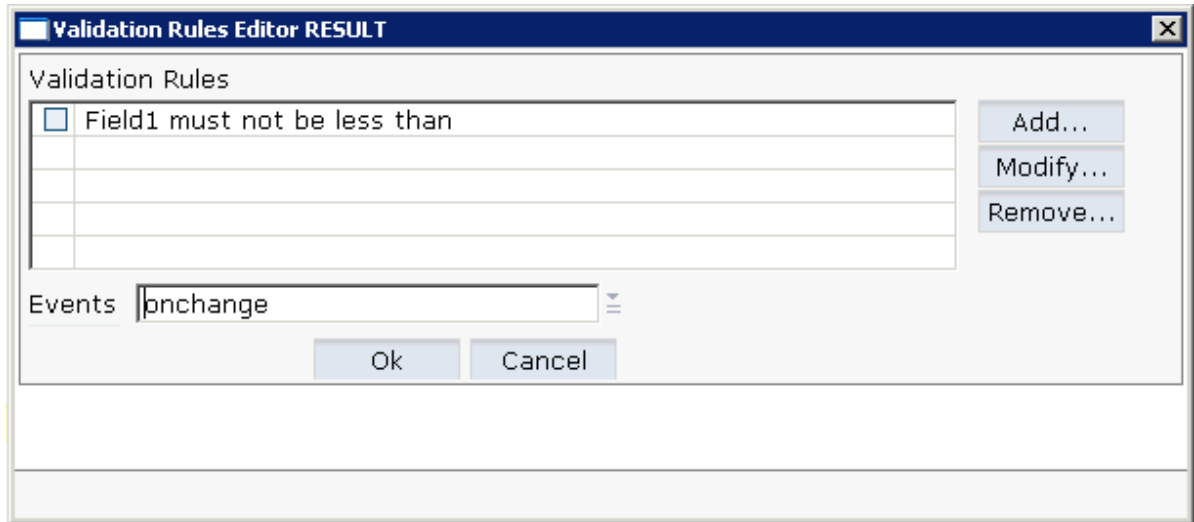
Opening the Validation Rules Editor

When you open the validation rules editor, you can add, modify and remove validation rules.

▶ To open the validation rules editor

- 1 In the layout area or preview area, select the field control that you want to validate.
- 2 From the **Ajax Developer** menu, choose **Insert/Edit Validation Rules**.

A dialog appears. If validation rules have already been defined, the messages that have been defined for these rules are shown in the text box. Example:



The following command buttons are provided:

Command Button	Description
Add	Adds a new validation rule. See below.
Modify	Modifies the selected validation rule.
Remove	Removes the selected validation rule.

Adding a New Validation Rule

The prerequisite for adding a validation rule for a field is that an adapter class or Natural adapter with the corresponding code exists for the field. Otherwise, the field does not appear in the validation rules editor.

You can add more than one validation rule.

▶ To add a new validation rule

- 1 To add a validation rule, choose the **Add** button.

Additional information is now shown at the bottom of the dialog.

Validation Rules Editor RESULT

Validation Rules

Field	Condition	Value	Operator

Events: onchange

Buttons: Add..., Modify..., Remove...

Buttons: Ok, Cancel

If this condition is true: (Enter date in YYYYMMDD format)

Field	Condition	Value	Operator
1			

Buttons: Add, Delete

then show this error alert:

Message: [Text Box]

Text ID: [Text Box]

Buttons: Ok, Cancel

- 2 From the first drop-down list box, select the name of the field for which you want to add a condition.
- 3 From the second drop-down list box, select the condition (for example, "less than").
- 4 In the third box, enter the value for the condition (for example, "100").
- 5 Optional. From the fourth drop-down list box, select the operator **And** or **Or** if you want to define an additional condition. In this case, you have to choose the **Add** button which is shown in the lower part of the dialog and specify the required values in the resulting line (as described above).
- 6 In the **Message** text box, enter the message that is to appear in a dialog box when an invalid value is entered (for example: "The value in the field must not be less than 100!").

Or:

If you are working with several languages, enter a text ID in the **Text ID** text box. See also *Multi Language Management*.

- 7 From the **Events** drop-down list box, select one of the following values. This defines the behavior in the case of an error.

Event	Description
onchange	Your message will appear when the user leaves the input field.
onsubmit	Your message will appear when the information is about to be transferred to the server (for example, by choosing a Save button).

The lower part of the dialog may now look as follows:

If this condition is true:(Enter date in YYYYMMDD format)

1	name	less than	100

then show this error alert:

Message

Text ID

Ok Cancel

- 8 Optional. If you want to delete a condition, select the corresponding row and choose the **Delete** button.
- 9 To confirm the new validation rule, choose the **OK** button in the lower part of the window.

The dialog is not closed and you can add further validation rules.

- 10 To confirm all validation rules and to close the window, choose the **OK** button in the upper part of the window.

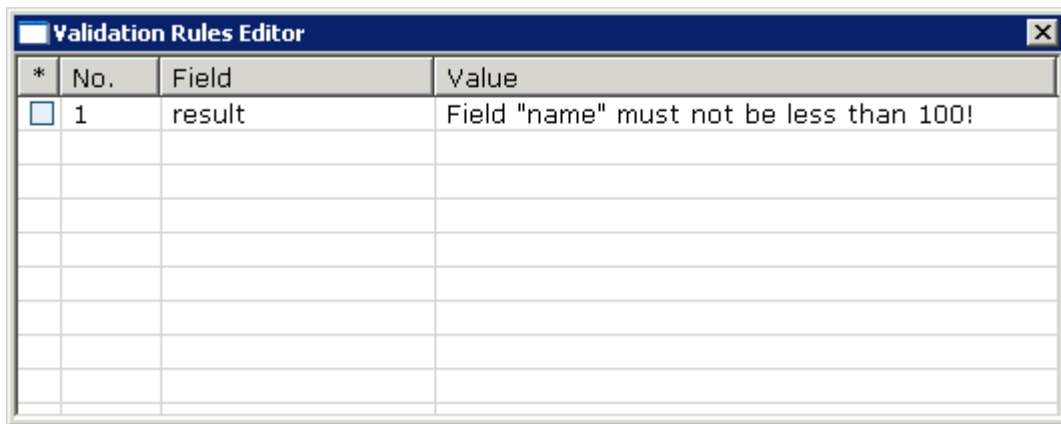
Displaying an Overview of All Defined Validation Rules

You can display a list of all validation rules which are defined in the current layout.

▶ To display an overview

- From the **Ajax Developer** menu, choose **Validation Rules Overview**.

A dialog appears. When validation rules have been defined in the current layout, they are listed in this dialog.



* <input type="checkbox"/>	No.	Field	Value
<input checked="" type="checkbox"/>	1	result	Field "name" must not be less than 100!
<input type="checkbox"/>			
<input type="checkbox"/>			
<input type="checkbox"/>			
<input type="checkbox"/>			
<input type="checkbox"/>			
<input type="checkbox"/>			
<input type="checkbox"/>			
<input type="checkbox"/>			


When you click on a validation rule, the validation rules editor appears and you can change the validation rule as described above.

9 Using the Formula Editor

- About the Formula Editor 68
- Opening the Formula Editor 68
- Adding a New Formula 69
- Displaying an Overview of All Defined Formulae 71

About the Formula Editor

The formula editor can be used, for example, to define that the sum of the fields A and B is to be shown in field C. In this case, the formula has to added to field C.

 **Important:** The formula is processed on the client side.

Opening the Formula Editor

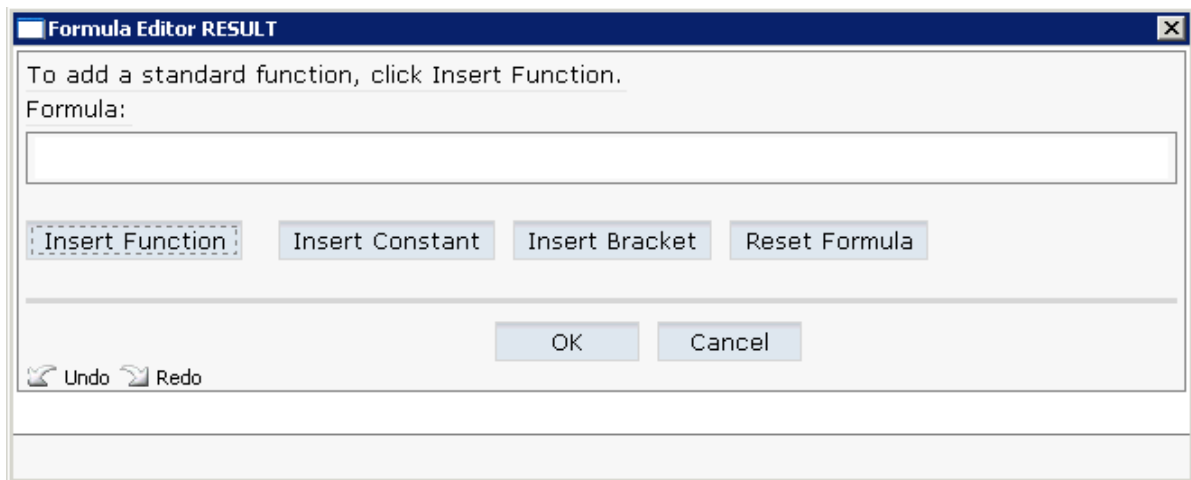
When you open the formula editor, you can add or remove a formula.


The prerequisite for adding a formula for a field is that an adapter class or Natural adapter with the corresponding code exists. The formula editor only works with fields that have valid declared properties on the adapter side.

▶ To open the formula editor

- 1 In the layout area or preview area, select the field control for which you want to add a formula.
- 2 From the **Ajax Developer** menu, choose **Insert/Edit Formula**.

A dialog appears. If a formula has already been defined for the selected field, it is shown in the dialog.



 **Important:** A function is always defined from the left to the right. It is not possible to go back in the function, for example, in order to insert a missing operator. Therefore, you should already have a plan of your function in mind before you compose the function using the controls in the formular editor.

The following command buttons are provided:

Command Button	Description
Insert Function	Allows you to select a function (such as sum) from a drop-down list box. After you have selected a function, you define the required fields using an "insert field" link. A simple example is provided below; see Adding a New Formula .
Insert Operator	This button is only shown when applicable, that is, if at least one expression has been entered. Allows you to select an operator (such as the plus sign) from a drop-down list box.
Insert Constant	Allows you to define a constant (for example, the number "77") in a text box.
Insert Bracket	Allows you to select brackets from a drop-down list box.
Reset Formula	Deletes the formula.

Adding a New Formula

This section explains how to define a simple formula: the sum of the fields **Value A** and **Value B** is to be shown in the **Sum** field.

The screenshot shows a dialog box with the title "Simple Sum Example" and a close button (X). Inside the dialog, there are three input fields. The first two are labeled "Value A" and "Value B" respectively, and are stacked vertically. The third input field is labeled "Sum" and is positioned below the other two. All input fields are currently empty.

▶ To add a simple formula

It is assumed that the formula editor has been invoked as described [above](#) (the field was selected in which the sum is to be shown).


- 1 Choose the **Insert Function** button.

The following information is now shown at the bottom of the dialog.



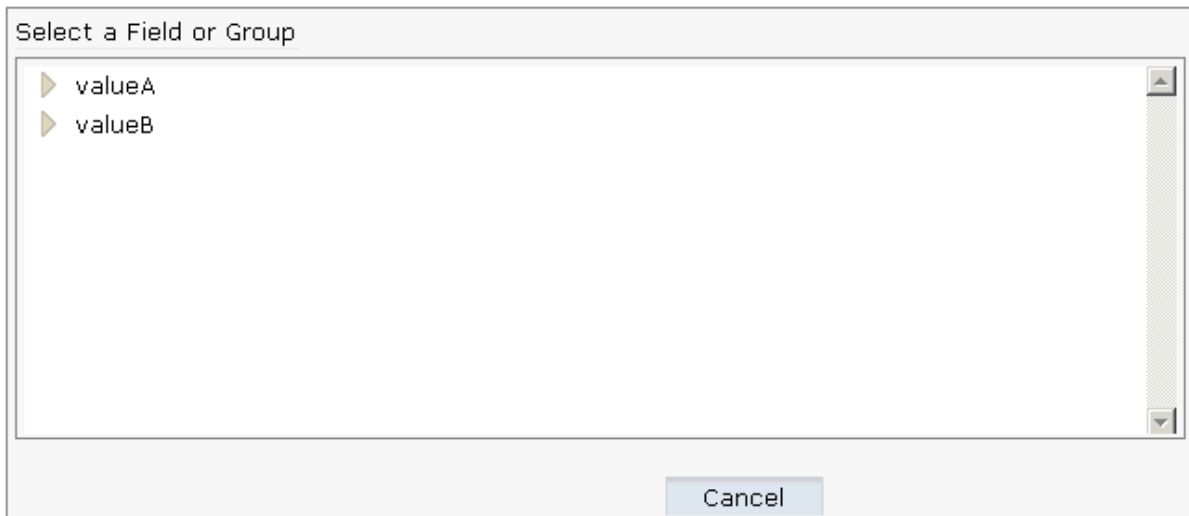
- 2 Select the required function (for this example, select **sum**) from the **Functions** drop-down list box and choose the **OK** button.

The information at the bottom of the dialog is no longer shown. The selected function is now shown in the **Formula** text box, together with the link "insert field".

 **Note:** It is not possible to edit the formula in the **Formula** text box.

- 3 Choose the "insert field" link in the **Formula** text box.

The fields that are currently defined in the layout are now shown at the bottom of the dialog. Example:



- 4 Choose a field (for this example, choose **valueA**).

The selected field is now shown in the **Formula** text box. The link "insert field" is still shown in case you want to insert more fields.

- 5 Insert all required fields as described above (for this example, choose **valueB**).

For this example, the formula should look as follows:

```
sum(valueA,valueB)
```

- 6 When the formula is complete, choose the **Cancel** button.
- 7 To close the formula editor, choose the **OK** button.

You can now test the formula in the preview area.

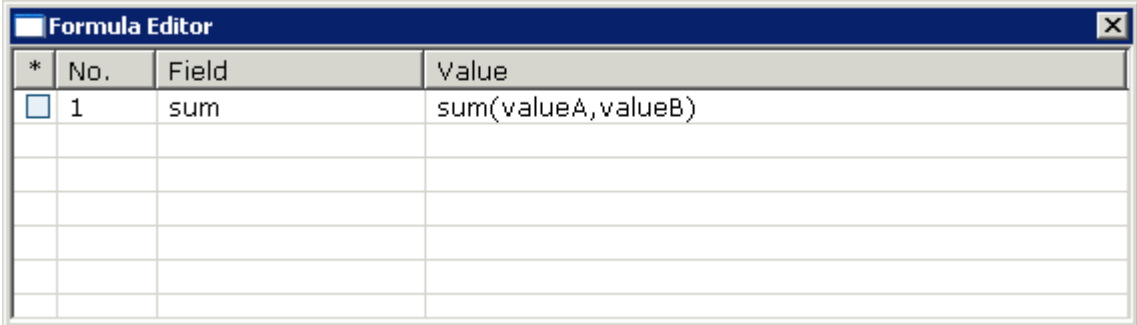
Displaying an Overview of All Defined Formulae

You can display a list of all formulae which are defined in the current layout.

▶ To display an overview

- From the **Ajax Developer** menu, choose **Formula Overview**.

A dialog appears. When formulae have been defined in the current layout, they are listed in this dialog.



*	No.	Field	Value
<input type="checkbox"/>	1	sum	sum(valueA,valueB)

When you click on a formula, the formula editor appears and you can change the formula as described above.

10 Language Manager

- About the Language Manager 74
- Invoking the Language Manager 74
- Defining a New Language 75
- Opening an Existing Language 77

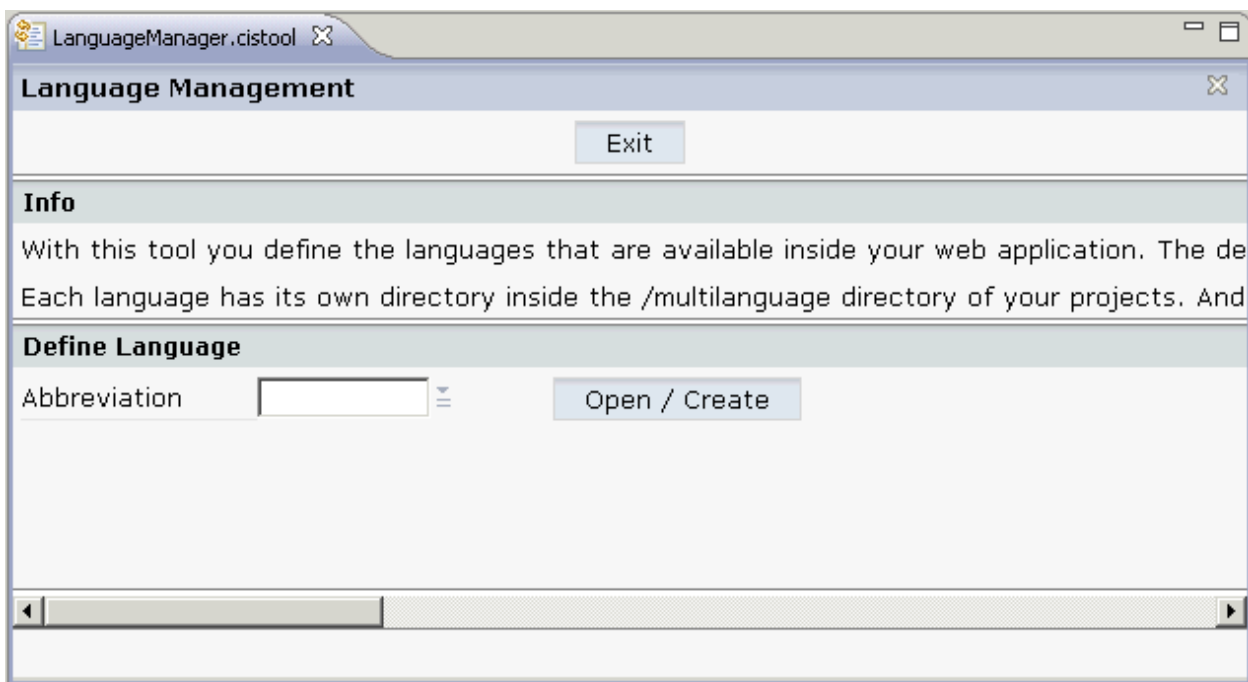
About the Language Manager

Two languages are supported by default: "en" for English and "de" for German. The Language Manager can be used to define additional languages.

The concept of the multi language management is described in *Multi Language Management*. It is recommended that you read this information before you proceed with the information below.

Invoking the Language Manager

When you invoke the Language Manager, the following dialog appears.



▶ To invoke the Language Manager

- 1 In the **Navigator** view, select the project for which you want to invoke the Language Manager.
- 2 Invoke the context menu and from the **Ajax Developer** menu, choose **Language Manager**.

Defining a New Language

When you define a new language, the required directories and certain files holding textual information will automatically be created in all existing projects.

► To define a new language

- 1 In the text box of the **Abbreviation** drop-down list box, enter the abbreviation for your new language.
- 2 Choose the **Open / Create** button.

The following information is shown.

Translate the literals and message texts listed below and press "Save" afterwards.

Literals	Messages
Date Input	<input type="text"/>
Time Input	<input type="text"/>
Text Input	<input type="text"/>
Number Input	<input type="text"/>
OK	<input type="text"/>
January	<input type="text"/>
February	<input type="text"/>
March	<input type="text"/>
April	<input type="text"/>
May	<input type="text"/>
June	<input type="text"/>
July	<input type="text"/>
August	<input type="text"/>
September	<input type="text"/>
October	<input type="text"/>
November	<input type="text"/>
December	<input type="text"/>
Today	<input type="text"/>
Hour	<input type="text"/>
Minute	<input type="text"/>
Second	<input type="text"/>
File Upload	<input type="text"/>
Upload	<input type="text"/>
Mo	<input type="text"/>
Tu	<input type="text"/>
We	<input type="text"/>
Th	<input type="text"/>
Fri	<input type="text"/>
Sa	<input type="text"/>
Su	<input type="text"/>
Ctrl	<input type="text"/>
Alt	<input type="text"/>
Shift	<input type="text"/>
No match for	<input type="text"/>

- 3 Translate all literals that are shown on the **Literals** tab.

- 4 Choose the **Messages** tab.



- 5 Translate all strings that are shown on the **Messages** tab.

Each "\n" in a string stands for a line break.

"REPLACE" is a placeholder for a variable. It must not be deleted. During runtime, the corresponding value will be used. Example:

Language 1: \nHint for input: REPLACE.\n\n\n

Language 2: \nHinweis für die Eingabe: REPLACE\n\n\n

- 6 Choose the **Save Language** button at the bottom of the dialog.

The directories and files for the specified language abbreviation are created. A message appears in the status bar of the Language Manager.

If you want to find out which directories and files were created, click the message in the status bar.

Opening an Existing Language

You can modify the text for literals and messages that you have specified when you have defined a new language (see above).

▶ To open an existing language

- 1 In the text box of the **Abbreviation** drop-down list box, enter the abbreviation of an existing language.
- 2 Choose the **Open / Create** button.

A dialog appears showing the currently defined texts for the literals and messages.

- 3 Edit the required texts on the **Literals** and/or **Messages** tab.
- 4 Choose the **Save Language** button at the bottom of the dialog.

The texts are written to the files which have been created for the specified language abbreviation. A message appears in the status bar of the Language Manager.

If you want to find out which files were affected, click the message in the status bar to display a dialog.

11 Literal Translator

▪ About the Literal Translator	80
▪ Invoking the Literal Translator	80
▪ Loading the Literals of a Layout	81
▪ Editing the Literals	82
▪ Adding a New Text ID	82
▪ Removing Text IDs	83

About the Literal Translator

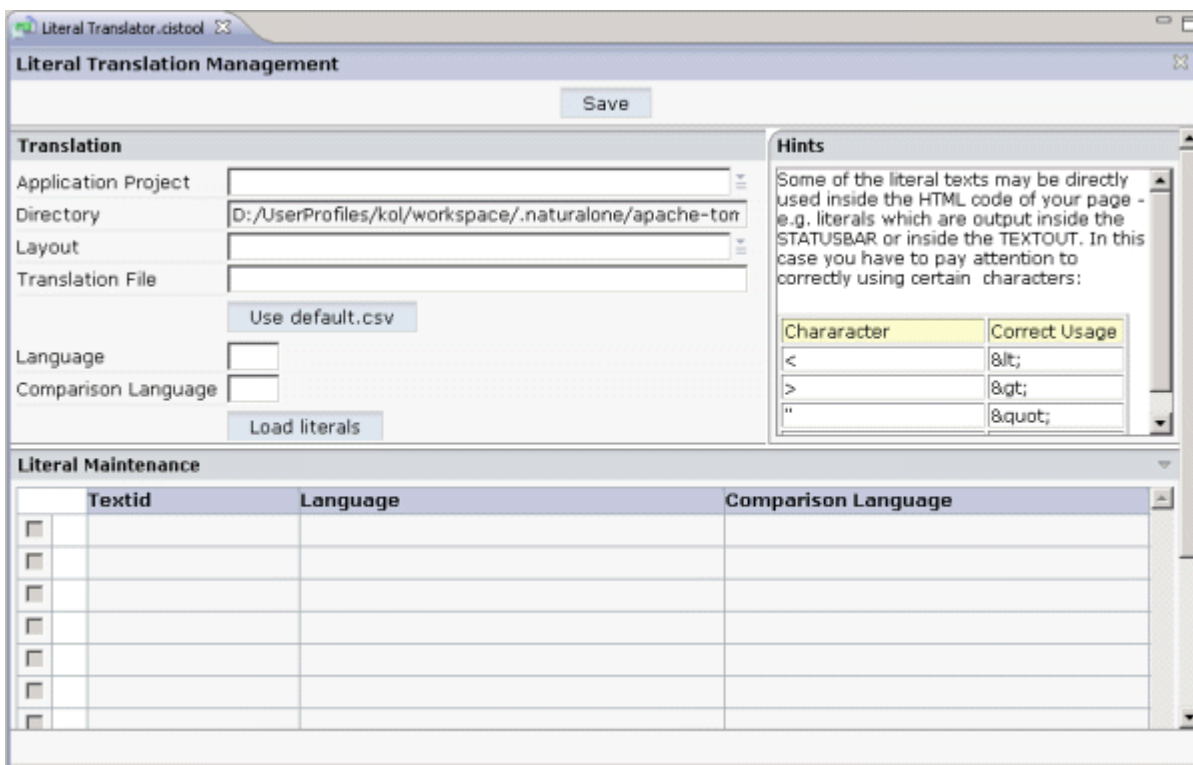
The Literal Translator can be used to translate text IDs. You can also use it to add and remove text IDs.

 **Note:** Text IDs can also be translated using the [Literal Assistant](#).

The concept of the multi language management is described in *Multi Language Management*. It is recommended that you read this information before you proceed with the information below.

Invoking the Literal Translator

When you invoke the Literal Translator, the following is shown:



▶ To invoke the Literal Translator

- 1 In the **Navigator** view, select the project for which you want to invoke the Literal Translator.
- 2 Invoke the context menu and from the **Ajax Developer** menu, choose **Literal Translator**.

Loading the Literals of a Layout

You can load and modify the texts for a specific layout in one language. Optionally, can also load the literals of a second language for comparison purposes.



Note: If you want to open the literals for a different layout or project, you have to close the Literal Translator and start it once more. Otherwise, the required options are not enabled.

▶ To load the literals of a layout

- 1 In the text box of the **Application Project** drop-down list box, enter the name of the project which contains your layout.

Or:

Open the drop-down list box and choose the project from the resulting dialog.

- 2 In the text box of the **Layout** drop-down list box, enter the name of the layout for which you want to translate the literals.

Or:

Open the drop-down list box and choose the layout from the resulting dialog.





- 3 In the **Translation File** text box, enter the name and extension of your translation file.



Notes:

1. It is not required that the specified translation file already exists. You can **add** new text IDs as described below. When you choose the **Save** button, the translation file will be created and all of your definitions are written to it. Literals that have been created in this way, still have to be assigned to the corresponding controls, for example, using the **Literal Assistant**.
2. If you do not enter the name of a translation file, *default.csv* is automatically provided in this text box.
3. You can use the **Use default.csv** button to enter *default.csv* in this text box.
4. In the **Language** text box, enter the abbreviation for the language that you want to use. See also *Language Manager*.
5. Optional. If you want to display the literal of a second language for comparison purposes, enter the abbreviation for this language in the **Comparison Language** text box.
6. Choose the **Load literals** button.

The contents of the translation file(s) are loaded and the literals are shown at the bottom. Example:

Literal Maintenance			
	Textid	Language	Comparison Language
<input type="checkbox"/>	 inarea	Input Area	Eingabebereich
<input type="checkbox"/>	 input	Input your name and press the 'Say H	Geben Sie Ihren Namen ein und wähle
<input type="checkbox"/>	 outarea	Output Area	Ausgabebereich
<input type="checkbox"/>	 result	Result	Ergebnis

Loaded literals

Editing the Literals

You can edit the literals that are shown in the **Language** column. It is not possible to edit the literals of the comparison language.

▶ To edit the literals

- 1 Enter the new text directly in the **Language** column.

Or:

To edit a literal in a separate dialog, choose the following icon which is shown next to the literal (this is helpful with long literals):



If you have opened a separate dialog, you have to choose the **Take Over** button in order to confirm your changes and to close the dialog.

- 2 Choose the **Save** button to write your changes to the translation file.

Adding a New Text ID

You can add a new text ID to the translation file and specify a literal for it.

▶ To add a new text ID

- 1 Choose the **New Text ID** button which is shown below the list of literals.

An empty line is added to the list.

- 2 Enter the literal in the **Language** column.

- 3 Choose the **Save** button to write the new text ID and literal to the translation file.

Removing Text IDs

You can remove one or more text IDs from the translation file.

▶ To remove text IDs

- 1 Select the check boxes in front of the text IDs that you want to remove.
- 2 Choose the **Remove Selected Text ID(s)** button which is shown below the list of literals.
- 3 Choose the **Save** button to remove the text IDs from the translation file.

12

Style Sheet Editor

▪ About the Style Sheet Editor	86
▪ Creating a Folder for Your Own Style Sheets	86
▪ Invoking the Style Sheet Editor	86
▪ Defining the Location for Your Own Style Sheets	87
▪ Creating a New Style Sheet	88
▪ Opening an Existing Style Sheet	90
▪ Changing a Style Sheet	90
▪ Overview of Variables	92
▪ Regenerating Your Own Style Sheet from the Style Sheet Template	93
▪ Using a Version Control Tool	94

About the Style Sheet Editor

All controls that are contained inside the control library are rendered using a style sheet. Ajax Developer delivers a variety of predefined styles but also allows to you to create your own styles sheets.

The Style Sheet Editor simplifies the creation of your own style sheets: on the one hand, you can define the very basic style elements (main colors to be used), and on the other hand, you can change a controls' style definition on the lowest level.

For information on how to define a style sheet in the Layout Painter, see [Defining a Style Sheet](#).

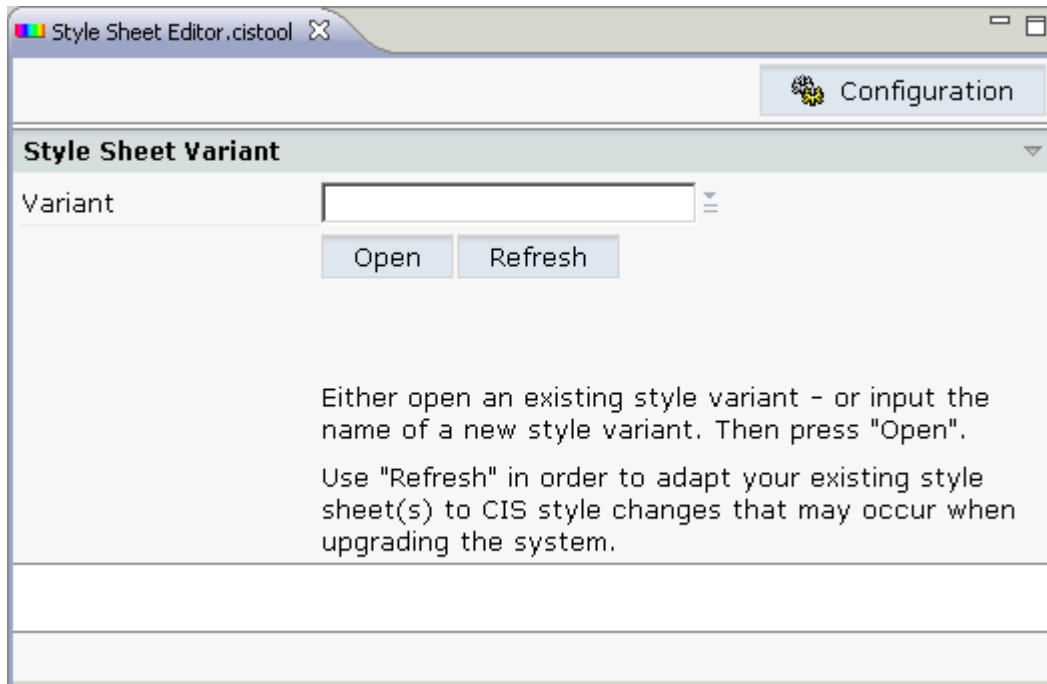
For further information on style sheets, see *Adapting the Look & Feel in Special Development Topics*.

Creating a Folder for Your Own Style Sheets

Style sheets are part of your application's user interface and should therefore be maintained in a user interface component. It is good practice to maintain your project-specific style sheets in a subfolder of a user interface component, for example, in a subfolder named *styles*.

Invoking the Style Sheet Editor

When you invoke the Style Sheet Editor, the following is shown:



▶ To invoke the Style Sheet Editor

- 1 In the **Navigator** view, select the project for which you want to invoke the Style Sheet Editor.
- 2 Invoke the context menu and from the **Ajax Developer** menu, choose **Style Sheet Editor**.

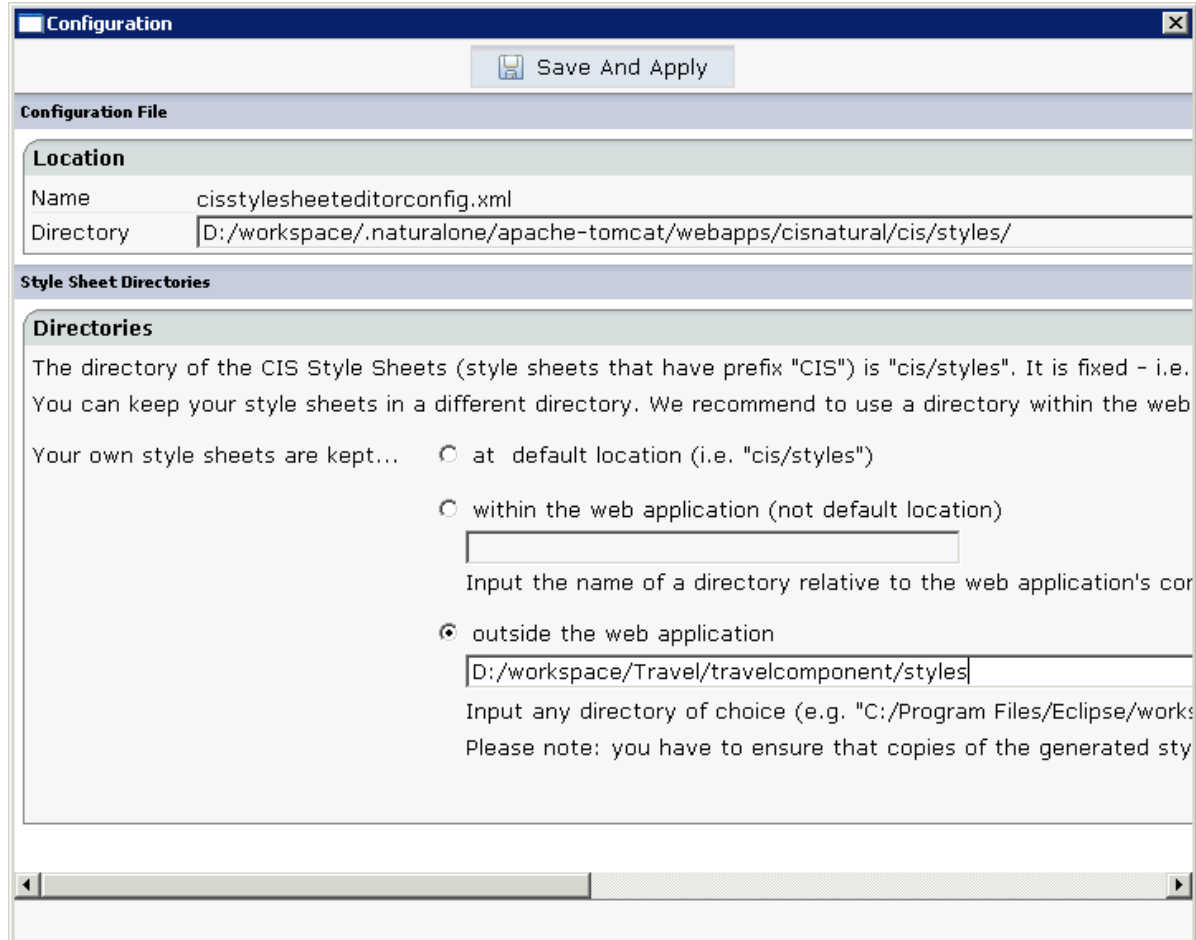
Defining the Location for Your Own Style Sheets

Ajax Developer provides a set of predefined style sheets. In a NaturalONE installation, these style sheets are available in the directory `<eclipse-workspace>/.naturalone/apache-tomcat/webapps/cisnatural/cis/styles`. Otherwise, these style sheets are located in `<your-webapplication>/cis/styles`. The names of the predefined style sheets have the prefix "CIS_".

When you create your own style sheets, first copy the predefined style sheets into the style sheet folder of your user interface component.

▶ To define the location for your own style sheets

- 1 Choose the **Configuration** button which is shown in top right of the Style Sheet Editor.
- 2 In the resulting dialog box, choose the option button **outside the web application**.
- 3 Specify the absolute path to your style sheet folder, for example, `<eclipse-workspace>/Travel/travelcomponent/styles`.



- 4 Choose the **Save and Apply** button.

Creating a New Style Sheet

When you create and save a new style sheet, it is written to the directory that has been defined in the **Configuration** dialog.

You can determine that your new style sheet is immediately applied to the current session.

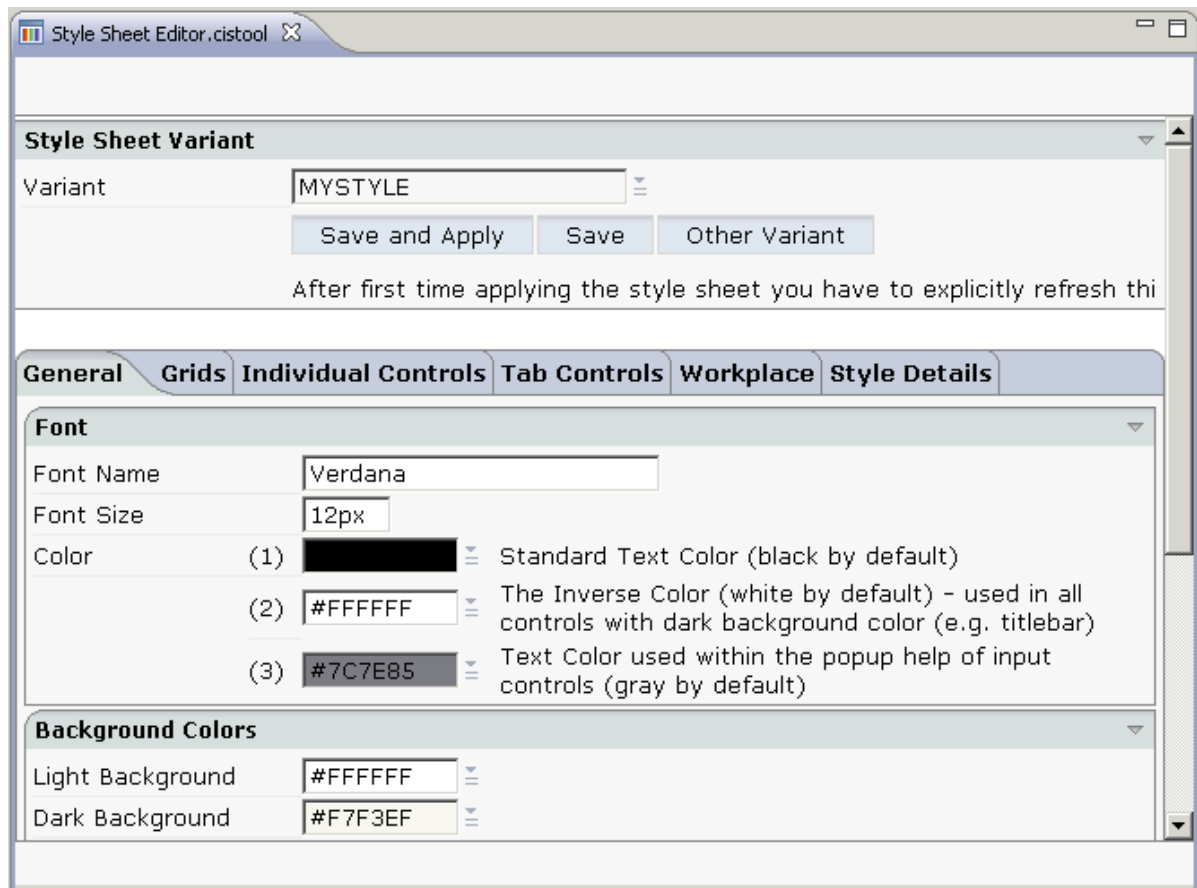


Note: By default, your pages are rendered with the *CIS_DEFAULT* style sheet which is one of Ajax Developers' predefined style sheets.

▶ To create a new style sheet

- 1 In the **Variant** drop-down list box, enter the name for your new style sheet.
- 2 Choose the **Open** button.

The following is shown:



- 3 Modify the values on the different tabs according to your requirements. See [Changing a Style Sheet](#) for information on the **Style Details** tab.



Note: When you choose the **Other Variant** button, the dialog is shown again which appears when you invoke the Style Sheet Editor. You can then open another style sheet or create a new style sheet. If you have not saved your input previously, it is lost.

- 4 To save your changes, choose either the **Save** button or the **Save and Apply** button.

When you save a new style sheet for the first time, it is created in your style sheet directory with the extension `css`.

When you choose the **Save and Apply** button, the style sheet file is immediately applied to the current session.

Opening an Existing Style Sheet

When you open an existing style sheet, you can modify it according to your requirements and/or immediately apply the style sheet to the current session.

▶ To open an existing style sheet

- 1 From the **Variant** drop-down list box, choose the name of the style sheet that you want to open.



Note: In addition to the style sheet names, the drop-down list box also shows the paths to the corresponding files in the file system.

- 2 Choose the **Open** button.

The dialog with the style sheet definitions appears.

- 3 Modify the values on the different tabs according to your requirements. See [Changing a Style Sheet](#) for information on the **Style Details** tab.



Note: When you choose the **Other Variant** button, the dialog is shown again which appears when you invoke the Style Sheet Editor. You can then open another style sheet or create a new style sheet. Any changes that you have applied after the last save are lost.

- 4 To save your changes, choose either the **Save** button or the **Save and Apply** button.

When you choose the **Save and Apply** button, the style sheet file is immediately applied to the current session.

Changing a Style Sheet

Ajax Developer provides an internal style template in which all the default style information is kept. A newly created style sheet is identical to this template. All style updates that you apply to your style sheet are stored within a separate file which has the extension *info*. For example, if you named your style sheet "MyStyle", your style sheet folder contains the file *MyStyle.info*.



Note: The style sheet folder also contains GIF files. They are generated according to your specifications for background, font, border color, etc. Each style sheet has thus individual GIF files. When you modify, for example, a color setting, new GIF files are generated which overwrite the previous GIF files.

When you have changed a default entry of the style template, the changed information is now shown in bold in an additional line. For example:

*	Attribute	Value
<input type="checkbox"/>	color	#FFFF00
<input type="checkbox"/>	font-family	@@FONT@@
<input type="checkbox"/>	font-size	@@FONTSIZE@@
<input type="checkbox"/>	color	@@FONTCOLORDARK@@



Notes:

1. If you do not want to take over a property from the style sheet template, specify "DELETE" as the attribute value and choose the **Update** button. All attributes that are marked with "DELETE" are not included in your style sheet.
2. If you want to take back a style update (that is: a change which is indicated by a bold line), delete the corresponding attribute value (that is: set it to blank) and choose the **Update** button. The bold line will disappear.

Overview of Variables

The following variables can be defined on the [Style Details](#) tab:

```
@@FONTCOLORDARK@@
@@FONTSIZE@@
@@FONT@@
@@LIGHTBACKGROUND@@
@@HEADLINEBACKGROUND@@
@@BORDERCOLOR@@
@@DARKBACKGROUND@@
@@TITLEBARBACKGROUND@@
@@FONTCOLORLIGHT@@
@@BUTTONHEIGHT@@
@@BUTTONIMAGE@@
@@BUTTONCOLOR@@
@@FONTCOLORINACTIVE@@
@@CONTROLERRORBACKGROUND@@
@@CONTROLEDITBACKGROUND@@
@@CONTROLDISPLAYBACKGROUND@@
@@LIGHTTITLEBARBACKGROUND@@
@@VARIANT@@
@@FIELDHEIGHT@@
```

```

@@FIELDBORDERCOLOR@@
@@CONTROLPOPUPINPUTONLYBACKGROUND@@
@@SHADED DARKBACKGROUND@@
@@SELECTEDCELLBACKGROUND@@
@@SELECTEDBACKGROUND@@
@@EVENCELLBACKGROUND@@
@@ODDCELLBACKGROUND@@
@@TABAREALEFTPADDINGFIRST@@
@@TABAREALEFTPADDINGSECOND@@
@@EMPTYCELLBACKGROUND@@
@@SHADEDSELECTEDBACKGROUND@@
@@ODDCELLBACKGROUNDVAR1@@
@@EVENCELLBACKGROUNDVAR1@@
@@SELECTEDCELLBACKGROUNDVAR1@@
@@EMPTYCELLBACKGROUNDVAR1@@
@@ODDCELLBACKGROUNDVAR2@@
@@EVENCELLBACKGROUNDVAR2@@
@@SELECTEDCELLBACKGROUNDVAR2@@
@@EMPTYCELLBACKGROUNDVAR2@@
@@TITLEBARHEIGHT@@
@@COLORTOPIC1@@
@@COLORTOPIC2@@
@@COLORTOPIC3@@
@@COLORTOPIC4@@
@@COLORTOPIC5@@
@@COLORTOPIC6@@
@@COLORTOPIC7@@
@@COLORTOPIC8@@
@@COLORTOPIC9@@
@@COLORTOPIC10@@

```

Regenerating Your Own Style Sheet from the Style Sheet Template

From release to release, new controls are added to the control library. As a consequence, the style sheet template is typically enhanced with every new control (for example, new style classes are added). As your style changes are kept in a separate file which has the extension *info*, your style sheet can easily include the enhancements. You just have to regenerate your own style sheet file.



Important: After the installation of a new Ajax Developer build, you have to regenerate your own style sheet(s).

▶ **To regenerate your own style sheet**

- 1 From the **Variant** drop-down list box, select the name of your style sheet.
- 2 Choose the **Refresh** button.

The following command buttons are now shown: **Selected Variant** and **All Variants**.

- 3 Choose the **Selected Variant** button.



Note: Choose the **All Variants** button if you want to regenerate all existing style sheets.

Using a Version Control Tool

If you want to secure your style sheets with a version control tool, it is sufficient to keep the files with the extension *info* under version control. The actual style sheet file (with the extension *css*) is just a generation result out of the INFO file.

13 Tracing

- About the Tracing Tools 96
- Recording a Performance Trace 96
- Executing a Performance Trace 99

About the Tracing Tools

The tracing tools can be used to test the performance of a web application. First, you record a performance trace (that is, your interaction with the server), and then you execute the recorded performance trace in order to determine the amount of time that is required for processing the server requests.

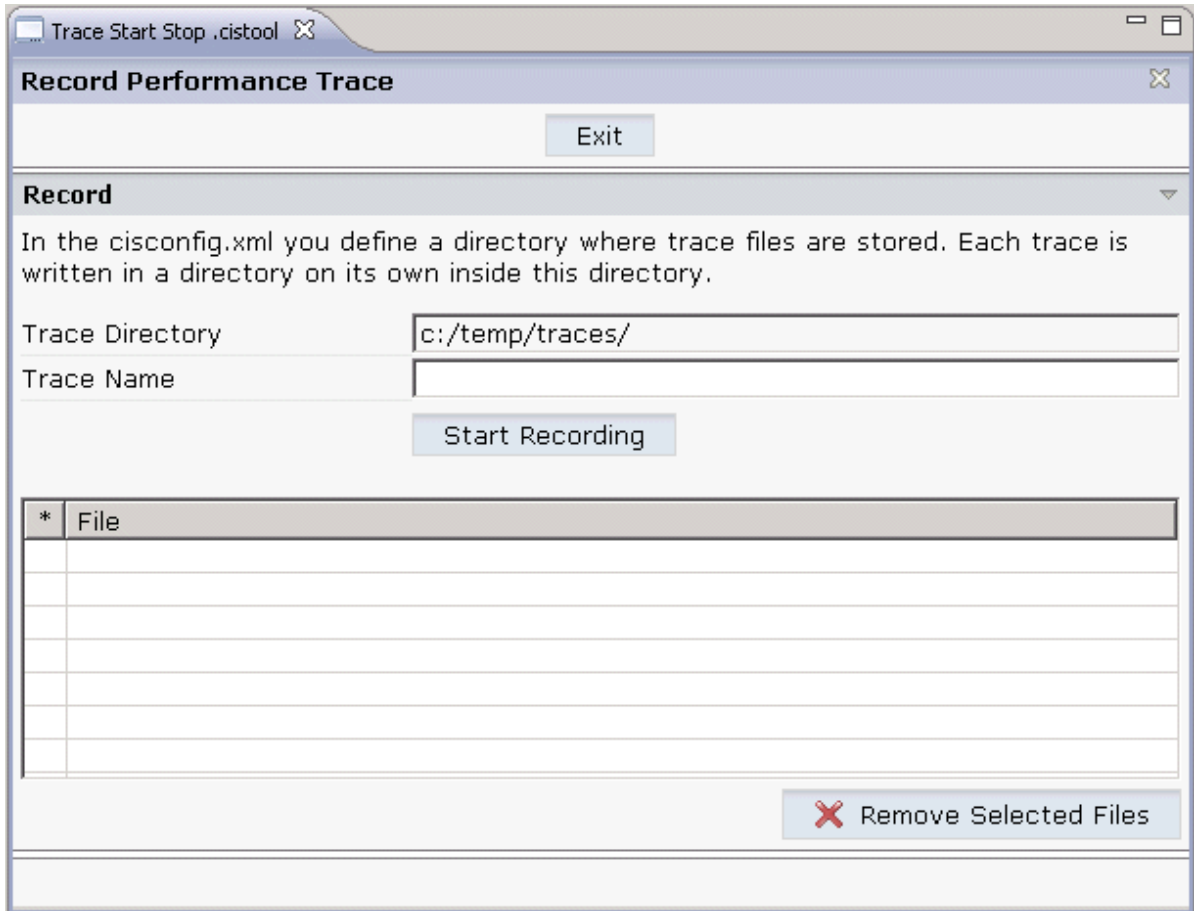
Recording a Performance Trace

Performance traces are recorded using the **Trace Start/Stop** command.

▶ To record a performance trace


- 1 In the **Navigator** view, select the project for which you want to record a performance trace.
- 2 Invoke the context menu and from the **Ajax Developer** menu, choose **Trace Start/Stop**.

The following editor appears.



The **Trace Directory** text box indicates the directory in which the traces will be stored. The name of this directory is defined in the file *cisconfig.xml*.

Each trace is written into a separate subdirectory of the trace directory. The name of the subdirectory is determined by your specification in the **Trace Name** text box.

 **Note:** Make sure that the trace directory is available at the specified location. Otherwise, traces will not be written.

- 3 Enter the name of a subdirectory in the **Trace Name** text box.
- 4 Choose the **Start Recording** button.

Additional information is now shown in the editor.

Record ▼

In the cisconfig.xml you define a directory where trace files are stored. Each trace is written in a directory on its own inside this directory.

Trace Directory

Trace Name

Next Request's Comment

- 5 In the **Next Request's Comment** text box, enter a comment name for the current trace.

Using comment names, you can subdivide the trace into several sections. The comment name is used in the names of the files that are created for your server requests (see below).

- 6 Choose the **Set** button.

The comment name that you specified is shown below the **Next Request's Comment** text box.

- 7 Initiate an interaction with the server.

For example, open the Layout Painter, and then return to the trace editor.

All requests (interactions with the server) that you initiate are recorded.

- 8 Choose the **Stop Recording** button.

The files that have been created for your requests are shown in the dialog. The comment name that you specified is part of the file name.

*	File
<input type="checkbox"/>	R0006_MyComment.request
<input type="checkbox"/>	R0007_MyComment.request
<input type="checkbox"/>	R0008_MyComment.request
<input type="checkbox"/>	R0009_MyComment.request

If you want to remove one or more files from the list, select the file(s) and choose the **Remove Selected Files** button.

You can add further requests to this trace by repeating the above steps.

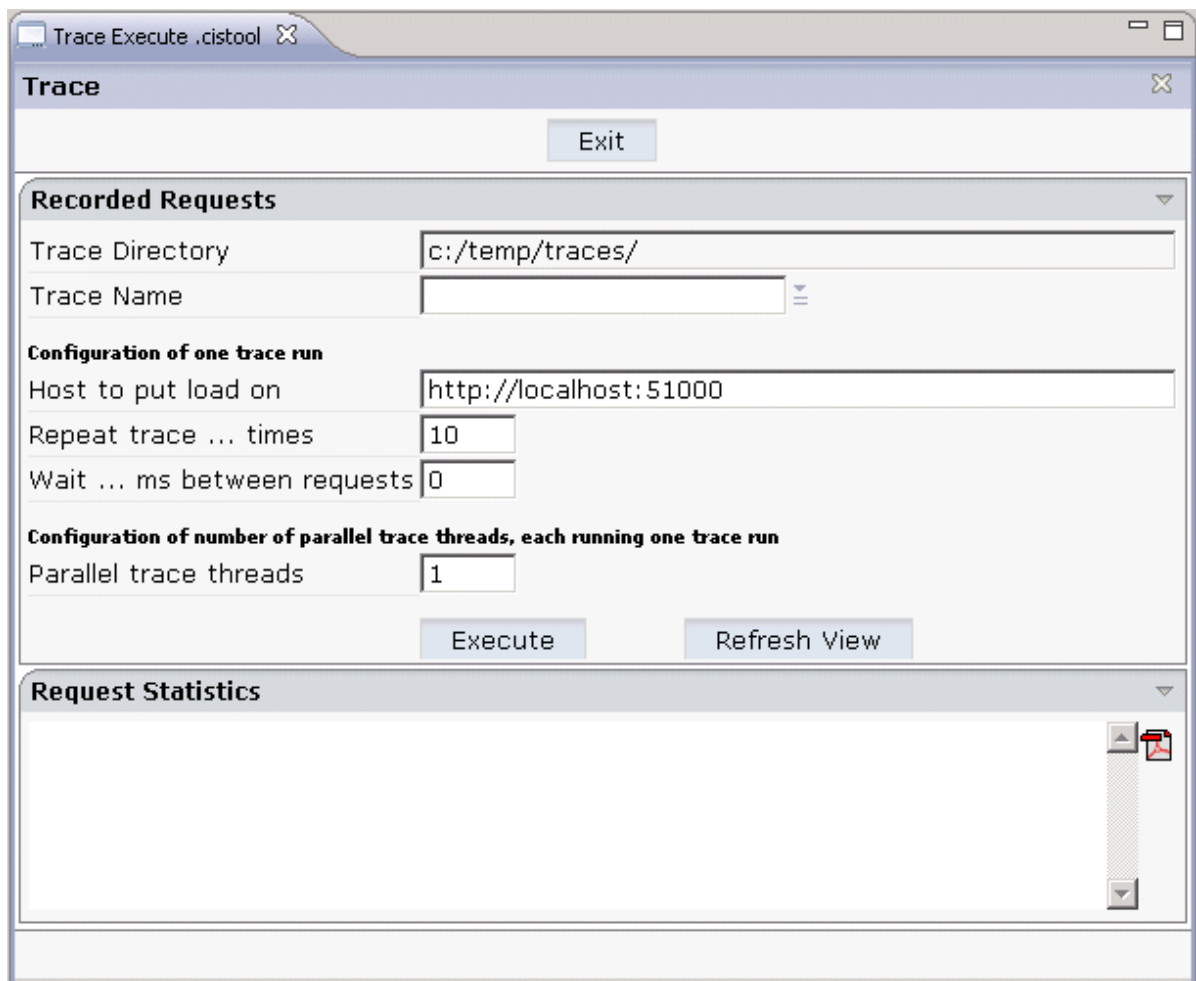
Executing a Performance Trace

Recorded performance traces are executed using the **Trace Execute** command.

▶ To execute a performance trace

- 1 In the **Navigator** view, select the project for which you want to execute a performance trace.
- 2 Invoke the context menu and from the **Ajax Developer** menu, choose **Trace Execute**.

The following editor appears.



The **Trace Directory** text box indicates the directory in which the tool looks for the recorded traces.

- Specify the following information:

Trace Name

Select the name of the subdirectory which contains the recorded traces for your server requests.

Host to put load on

Enter the URL of the host on which you want to execute the trace.

Repeat trace ... times

Enter the number of times that the trace is to be repeated.

For all defined repetitions, the average process time (in milliseconds) will be shown in the request statistics (see below). The more repetitions you define, the more conclusive is the resulting average value.

Wait ... ms between requests

Enter the waiting time between the requests in milliseconds.

Parallel trace threads

Enter the number of parallel trace threads. This simulates the number of users that access the web application at the same time.

- Choose the **Execute** button.
- Choose the **Refresh View** button to display the request statistics at the bottom of the dialog.

Information on the requests is now shown in the **Request Statistics** section:

Request Statistics						
Trace Threads						
Working	Finished					
1	0					
Overview						
Request	Calls	OK	ERR	Duration	Min	Max
Trace file name: c:/temp/traces//MyTrace/traceresults_20090911173928292.csv						

The first small table indicates the current number of unfinished and finished trace threads.

The second table provides a statistical evaluation of the executed requests. The following information is provided for each request: the number of calls, the number of successful execu-

tions, the number of errors, the average process time for all calls (duration), the minimum process time for a call, and the maximum process time for a call. The times are given in milliseconds.

In the case of an error, an additional table is shown which provides details on the error.

You can choose the following button in the **Request Statistics** section to display the request statistics in PDF:



The trace result is stored in a CSV file. The path to this file is indicated at the bottom of the dialog.

14 Monitoring

- About the Monitoring Tool 104
- Invoking the Monitoring Tool 104
- Memory 105
- Active Sessions 105
- System Management 106

About the Monitoring Tool

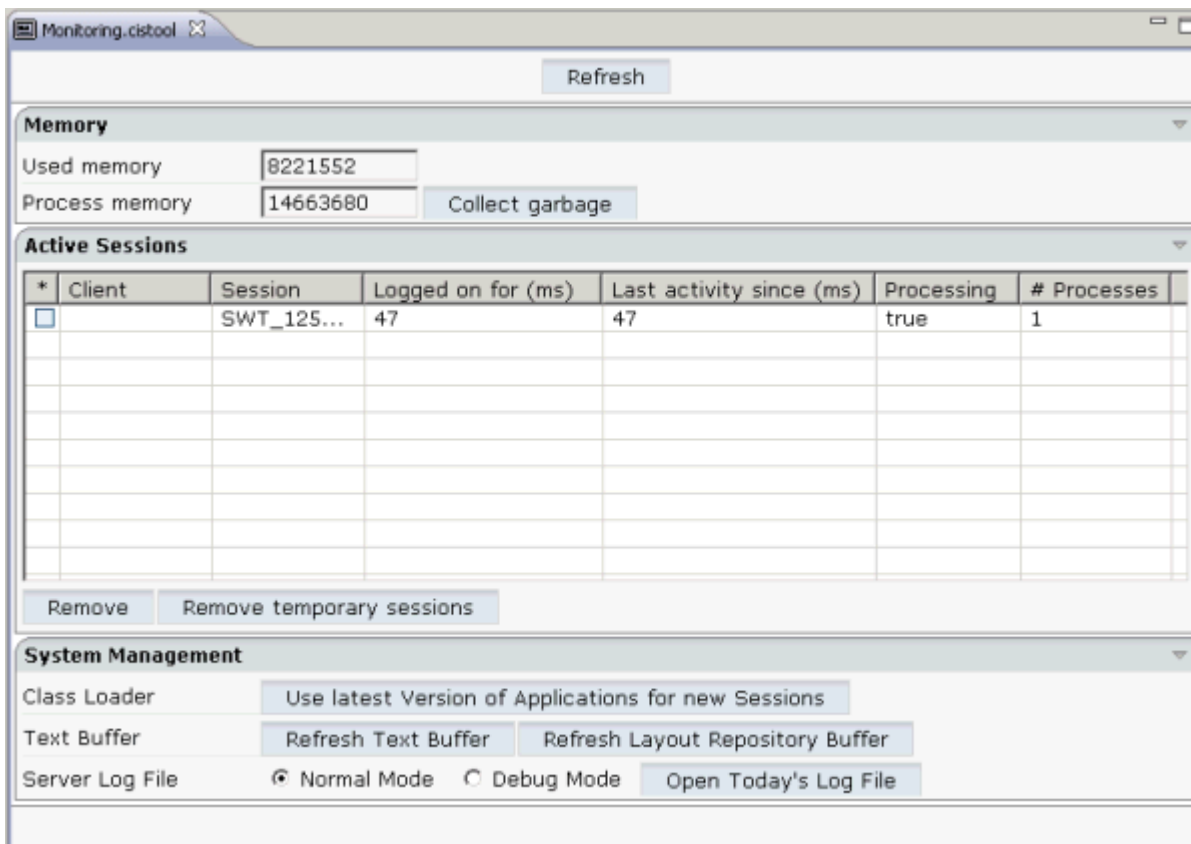
The monitoring tool is used to monitor the sessions that are currently running in the local web container environment.

To monitor the sessions of an application that has been deployed to another web container, you use the monitoring tool directly in the deployed application. A link to that monitoring tool is available on the default index page that is packaged along with the application (see also *Content of a Natural for Ajax Web Application*, which is part of the NaturalONE documentation).

Sessions which are no longer required can be deleted and memory can thus be freed. For more information on sessions, see *Details on Session Management* in *Special Development Topics*.

Invoking the Monitoring Tool

When you invoke the monitoring tool, the following editor appears.



The editor is subdivided into several areas:

- **Memory**
- **Active Sessions**
- **System Management**

Using the **Refresh** button at the very top of the editor, you can reload the information in the editor and thus show the most recent information.

▶ **To invoke the monitoring tool**

- 1 In the **Navigator** view, select the project for which you want to invoke the monitoring tool.
- 2 Invoke the context menu and from the **Ajax Developer** menu, choose **Monitoring**.

Memory

The top of the editor provides the following information:

Option	Description
Used memory	This text box indicates the currently used memory.
Process memory	This text box indicates the available memory.
Collect garbage	When you choose this command button, memory which is no longer used on the server is set free.

Active Sessions

The middle of the editor provides a list with all sessions which are currently active.

The monitoring process itself is also considered as a session. When no other sessions are active, the monitoring process is the only session that is listed in the editor.

The following command buttons are available:

Command Button	Description
Remove	When you choose this command button, the selected sessions are removed from the list of active sessions.
Remove temporary sessions	When you choose this command button, all sessions (except the monitoring session itself) are removed from the list of active sessions.

System Management

The bottom of the editor provides the following information:

Option	Description
Class Loader	<p>When you choose the Use latest Version of Applications for new Sessions command button, a new class loader instance is generated. The most recent versions of your applications are then loaded. For example, when an adapter class has been modified, the modified class is loaded and any changes are immediately in effect.</p> <p>See also <i>Class Loader Concepts</i> in <i>Appendices</i>.</p>
Text Buffer	<p>When you choose the Refresh Text Buffer command button, the most recent versions of your language files are loaded and any changes are immediately in effect.</p> <p>When you choose the Refresh Layout Repository Buffer command button, the most recent versions of your layouts are loaded and any changes are immediately in effect.</p>
Server Log File	<p>The server log file contains a protocol of all interactions with the server. You can select the option button for the required log mode: Normal Mode or Debug Mode. In debug mode, the log contains more detailed information.</p> <p>When you choose the Open Today's Log File command button, a dialog appears showing the content of the log file.</p>

15 Server Logs Viewer

- About the Server Logs Viewer 108
- Preconfigured Server Logs 108
- Advanced Usage 110

About the Server Logs Viewer

The server logs viewer is preconfigured to view the server logs of the user interface components. All user interface components of a project which has been enabled for Ajax Developer share the same server log. This is described under *Preconfigured Server Logs*.

In addition, the server logs viewer can be used to view all kind of other log files. This is described under *Advanced Usage*.

Preconfigured Server Logs

The **Server Logs Viewer** view is automatically opened when a project is enabled for Ajax Developer. A predefined log viewer is automatically available for this project. To display this predefined log viewer in the **Server Logs Viewer** view, you have to create an entry for it, as described below.

▶ To create an entry for a predefined log viewer

- 1 In the **Navigator** view, select the project which has been enabled for Ajax Developer.
- 2 Go to the **Server Logs Viewer** view.
- 3 Choose the following icon in the local toolbar:



- 4 In the resulting dialog box, open the **Select a predefined log viewer** drop-down list box and select the predefined log viewer. The name of the predefined log viewer is `<project-name>/Ajax Developer Server Log`.

When you select the predefined log viewer, Ajax Developer automatically sets the correct log location for the project. A predefined filter is used. If you want, you can customize the filter settings. See *Creating a Log Viewer* for further information.

Create new Log Viewer

LogViewer Details

If the log viewer that you want to add is already present in the "predefined log viewer" list then select it to use its settings, else you must enter all the details of the LogViewer manually.

Select a predefined log viewer: MyFirstProject/Ajax Developer Server Log

Description
Ajax Developer Server Log for the selected project.

Log viewer details

Log file to view is fixed:

Name of the log file varies:

Select log file directory: D:\UserProfiles\natural\workspace\naturalone\apache-tomcat

Log file name pattern: serverLog_\${yyyy}\${mm}\${dd}.log Add pattern: \${yyyy} +

Name of the view: MyFirstProject/Ajax Developer Server Log

Refresh interval (in seconds): 5

Log viewer options

Show entire file when first opened for viewing

No, show only specified number of lines when first opened for viewing

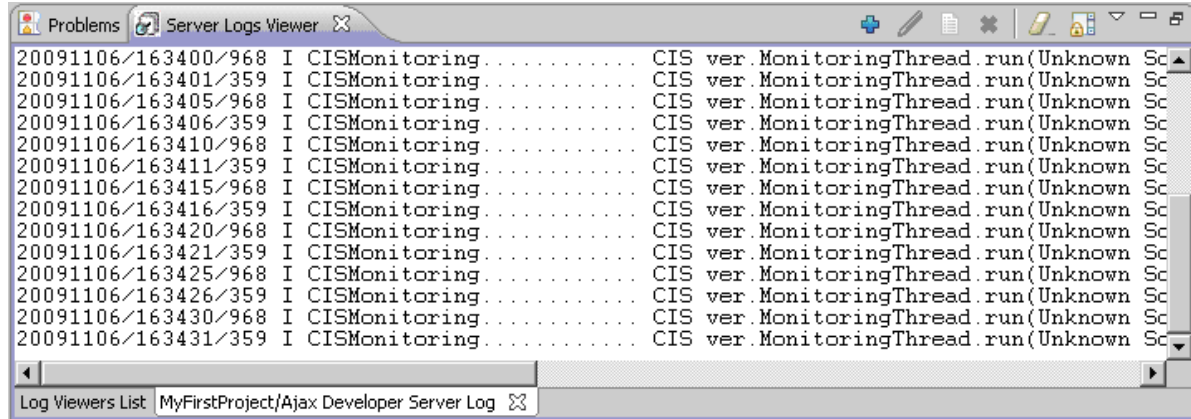
Number of lines to show 10

Line filters

If line CONTAINS "Request consumed" THEN change its style.

- 5 Choose the **Finish** button.

An entry for the log viewer is now shown in the **Server Logs Viewer** view. When you double-click this entry, the log file is opened. See also [Opening a Log Viewer](#).



Advanced Usage

The server logs viewer can also be used to view other log files, for example, the server logs of the Tomcat server. The server logs viewer can be used to view single or multiple log files. A log file records activities and operations that occurred on a server/computer, maintaining an operational history of these activities. A log file is identified by its *.log* extension.

A log viewer allows the user to:

- Specify refresh intervals.
- Specify the number of lines to be displayed from a file.
- Customize the way to view files by specifying filter conditions.
- Save the log files added in the viewer so that the user is able access them easily the next time.
- Provide extension points so as to enable other Eclipse plug-ins to contribute their log files for viewing.

The following topics are covered below:

- [Opening the Server Logs Viewer](#)
- [Creating a Log Viewer](#)
- [Editing a Log Viewer](#)
- [Opening a Log Viewer](#)

Creating a Log Viewer

You can create an entry for a new log viewer by using the settings of an existing log viewer (for example, of the predefined log viewer) and then modifying the settings according to your requirements.

▶ To create an entry for a new log viewer

- 1 Go to the **Server Logs Viewer** view.
- 2 Choose the following icon in the local toolbar:



The following dialog box appears.

- 3 Specify the following information:

Select a predefined log viewer

To create a new log viewer, keep the default value **New Log Viewer**.

If you want to use an existing log viewer as the basis for the new log viewer, select it from this drop-down list box. The description for the selected log viewer is then shown in the **Description** text box.

Log file to view is fixed

Select this option if the log file that must be viewed is fixed, that is, if its name does not change. The log viewer will view/read this file every time. Use the **Browse** button to select the log file.

Name of the log file varies

Select this option if the name of the log file changes on some criteria. For example, if the name of the log file contains a timestamp which is changed daily, the name of the log file also varies daily. Specify the following information in this case:

Option	Description
Select log file directory	Use the Browse button to select the directory containing the log files. For example, <code><myworkspace>\.naturalone\apache-tomcat\logs</code> for the log files of your local Apache Tomcat.
Log file name pattern	Specify the date pattern of your log files. For example, <code>catalina.\${yyyy}-\${mm}-\${dd}.log</code> for the log files of your local Apache Tomcat. Note: Ensure that you know the log file naming conventions used in your application before specifying this information.
Add pattern	Select the date format from the available options in the drop-down list box. Choose the button containing the plus sign to add each pattern to the Log file name pattern text box.

Name of the view

Enter a name to identify this viewer.

Refresh interval (in seconds)

The log viewer refreshes the view as per the interval you specify here.

Log viewer options

Choose the option to either view the entire log file or only a specified number lines when first opened for viewing. If you select the latter option, you need to specify the number of lines to be displayed.

Line filters

Choose the **Add Filter** button if you wish to add filters to the log files you view. Using these features, you can filter lines based on some conditions such as skipping the entire line or changing the display style in the view.

You add the line filters in the resulting dialog box. For example, to view a line highlighted in black and the font color as green, specify the following:

1. From the **If line** drop-down list box, select **Contains text** and enter "Info" in the text box.
2. Select the **Change the style of the line** option button.
3. Choose the **Foreground color** button and select the color green.

4. Choose the **Background color** button and select the color black.
5. Choose the **OK** button.

The following information is then shown:

```
If line CONTAINS "Info" THEN change its style.
```

To remove the selected line filter or all line filters, choose either the **Remove** or **Remove All** button.

- 4 Choose the **Finish** button.

Editing a Log Viewer

When you edit a log viewer, the same information is shown as when adding a new log viewer.

▶ To edit a log viewer

- 1 In the **Server Logs Viewer** view, select the log viewer that you want to edit.
- 2 Invoke the context menu and choose **Edit Log Viewer**.

Or:

Choose the following icon in the local toolbar:



A dialog appears.

- 3 Modify all required information as described in [Creating a Log Viewer](#).

In edit mode, it is not possible to change the log file to be viewed. The corresponding options are disabled.

- 4 Choose the **OK** button.

Opening a Log Viewer

When you open a log viewer, it is shown on a separate tab of the **Server Logs Viewer** view. It shows the contents of the defined log file.

▶ To open one or more log viewers

- 1 In the **Server Logs Viewer** view, select the log viewers that you want to open.
- 2 Invoke the context menu and choose **Open Log Viewer(s)**.

Or:

Choose the following icon in the local toolbar:



Or:

If you want to to open a single log viewer, you can simply double-click it.

A separate tab for each selected log viewer is provided in the **Server Logs Viewer** view.

If you want to remove such a tab, choose the close button that is shown next to the tab name.

Removing a Log Viewer

When you remove a log viewer, it is no longer shown in the **Server Logs Viewer** view.

▶ To remove one or more log viewers

- 1 In the **Server Logs Viewer** view, select the log viewers that you want to remove.
- 2 Invoke the context menu and choose **Remove Log Viewer(s)**.

Or:

Choose the following icon in the local toolbar:



A dialog appears, asking whether you really want to remove the selected log viewers.

- 3 Choose the **OK** button.