

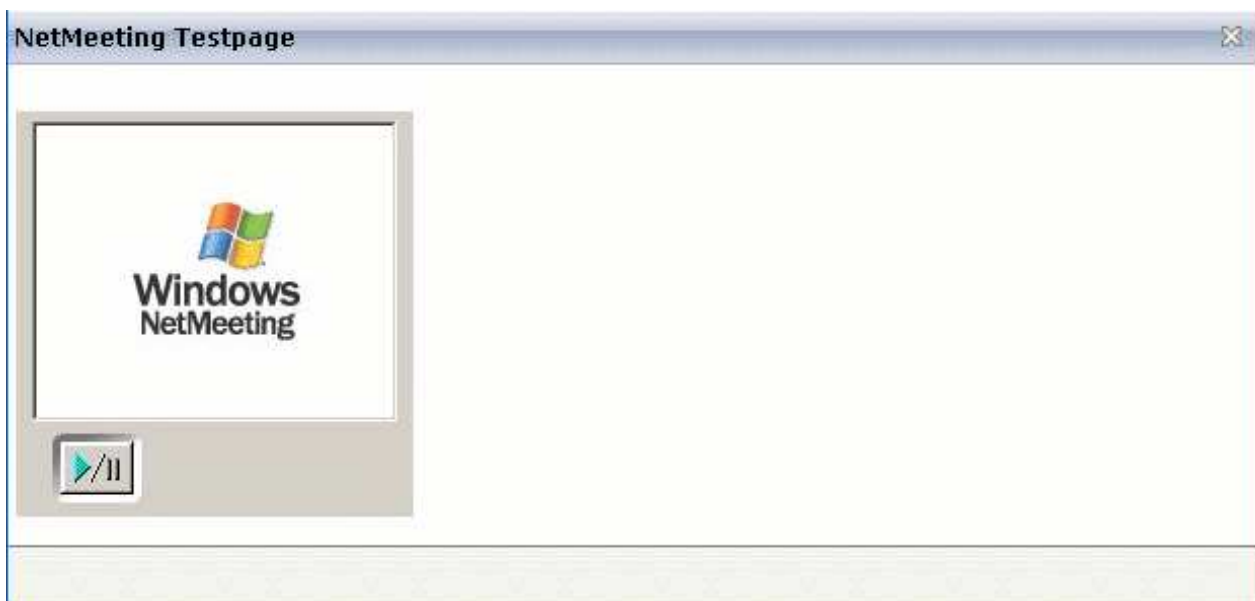
NETMEETING

The NETMEETING control allows you to start NetMeeting sessions within your Application Designer pages.

The following topics are covered below:

- Example
 - Properties
-

Example



The XML layout definition is:

```
<pagebody>
  <itr>
    <netmeeting calltoprop="callto" modeprop="modep" width="300">
    </netmeeting>
  </itr>
</pagebody>
```

The Java code of the adapter is:

```
public class NetMeetingTestAdapter extends Adapter
{
  // property >callto<
  String m_callto; // netmeeting directory server /emailAdr
  public String getCallto() { return m_callto; }
  public void setCallto(String value) { m_callto = value; }

  // property >modep<
  String m_modep;
  // FULL, PREVIEWONLY, PREVIEWNOPAUSE,
  // REMOTEONLY, REMOTENOPAUSE, DATAONLY
}
```

```

public String getModep() { return m_modep; }
public void setModep(String value) { m_modep = value; }

/** initialisation - called when creating this instance*/
public void init()
{
    m_callto = "netmeeting.ils.server/contact@netmeeting.com";
    m_modep="PREVIEWONLY";
}
}

```

Properties

Basic			
calltoprop	<p>Has to contain the contact data of 'contact' that should be called.</p> <p>The data has to have the following semantics.</p> <p>ILS Server/email adress e.g. ils.netmeeting.de/contact@testmail.com</p>	Optional	
modeprop	<p>Holds the mode of the control.</p> <p>Possible are:</p> <p>FULL, PREVIEWONLY, PREVIEWNOPAUSE, REMOTEONLY, REMOTENOPAUSE, DATAONLY</p>	Optional	
width	<p>Width of the control.</p> <p>There are three possibilities to define the width:</p> <p>(A) You do not define a width at all. In this case the width of the control will either be a default width or - in case of container controls - it will follow the width that is occupied by its content.</p> <p>(B) Pixel sizing: just input a number value (e.g. "100").</p> <p>(C) Percentage sizing: input a percentage value (e.g. "50%"). Pay attention: percentage sizing will only bring up correct results if the parent element of the control properly defines a width this control can reference. If you specify this control to have a width of 50% then the parent element (e.g. an ITR-row) may itself define a width of "100%". If the parent element does not specify a width then the rendering result may not represent what you expect.</p>	Optional	<p>100</p> <p>120</p> <p>140</p> <p>160</p> <p>180</p> <p>200</p> <p>50%</p> <p>100%</p>