

# Installation on Windows

This chapter covers the following topics:

- Installing Application Designer
  - Viewing the Demo Workplace
  - Documentation
  - Typical Problems
- 

## Installing Application Designer

To install Application Designer, deploy the web archive file *cis.war* into an existing servlet container.

For a Tomcat servlet container, you find the Application Designer web application in the following directory:

```
<installdir>/tomcat/webapps/cis
```

The web application contains the "typical" web application directories such as *WEB-INF* and *META-INF*. It also contains some additional directories starting with "cis" and the directories *HTMLBasedGUI* and *SWTBasedGUI*.

After Application Designer has been installed, you have to copy the license file to the required directory. See *License File*.

## Viewing the Demo Workplace

Start your browser (the supported browsers are listed in the section *Hardware and Software Requirements*) and open the following page:

```
http://localhost:51000/cis
```

If you have defined a different port, enter your port instead of 51000.

**Note:**

See also *Supported Browsers*.

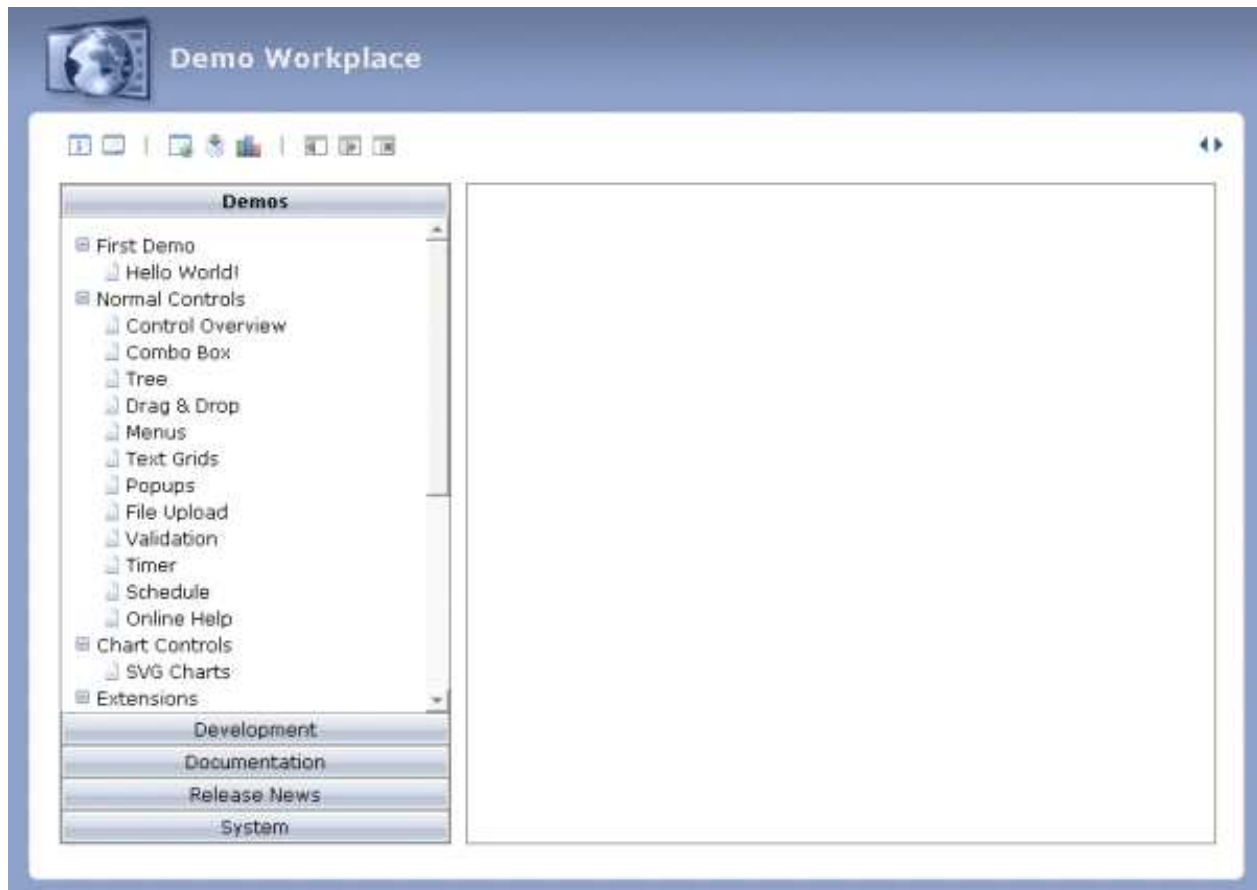
The resulting page contains the following links:

- Demo Workplace
- Development Workplace
- SWT Demos

**Notes:**

1. The link for the development workplace starts the environment in which you create and maintain your graphical user interfaces. See the *Development Workplace* documentation for detailed information.
2. The SWT demos are started in the SWT Java Client via Java Web Start. Using the link for the SWT demos, you can start the same demos as in the demo workplace described below. The only difference is that the demos are shown without using a browser. See also *SWT Client* in the *Special Development Topics* documentation.

When you choose the link for the demo workplace, you see the following page:



From the demo workplace, you can access many example pages, development tools for creating new page layouts, and some system monitoring functions. It is recommended that you first visit the demos before you invoke the development workplace.

## Documentation

The documentation is accessible directly after the installation in the directory `<installdir>/tomcat/webapps/cis/cisdocumentation`.

You can also access it from the Application Designer workplace. For further information, see *Developer Documents and License Information* in the *Development Workplace* documentation.

# Typical Problems

## Nothing Works inside the Browser

You only see a blank screen when following the link to the Application Designer workplace. Check whether the execution of JavaScript has been deactivated in your browser's security settings. See also *JavaScript Enabling*.