

Configuration, Log and Status Information

This section describes the following commands of the Layout Painter:

- Preferences
 - XML Schema (XSD)
 - Protocol
 - Server Log
 - Log
 - XML
 - Resources
-

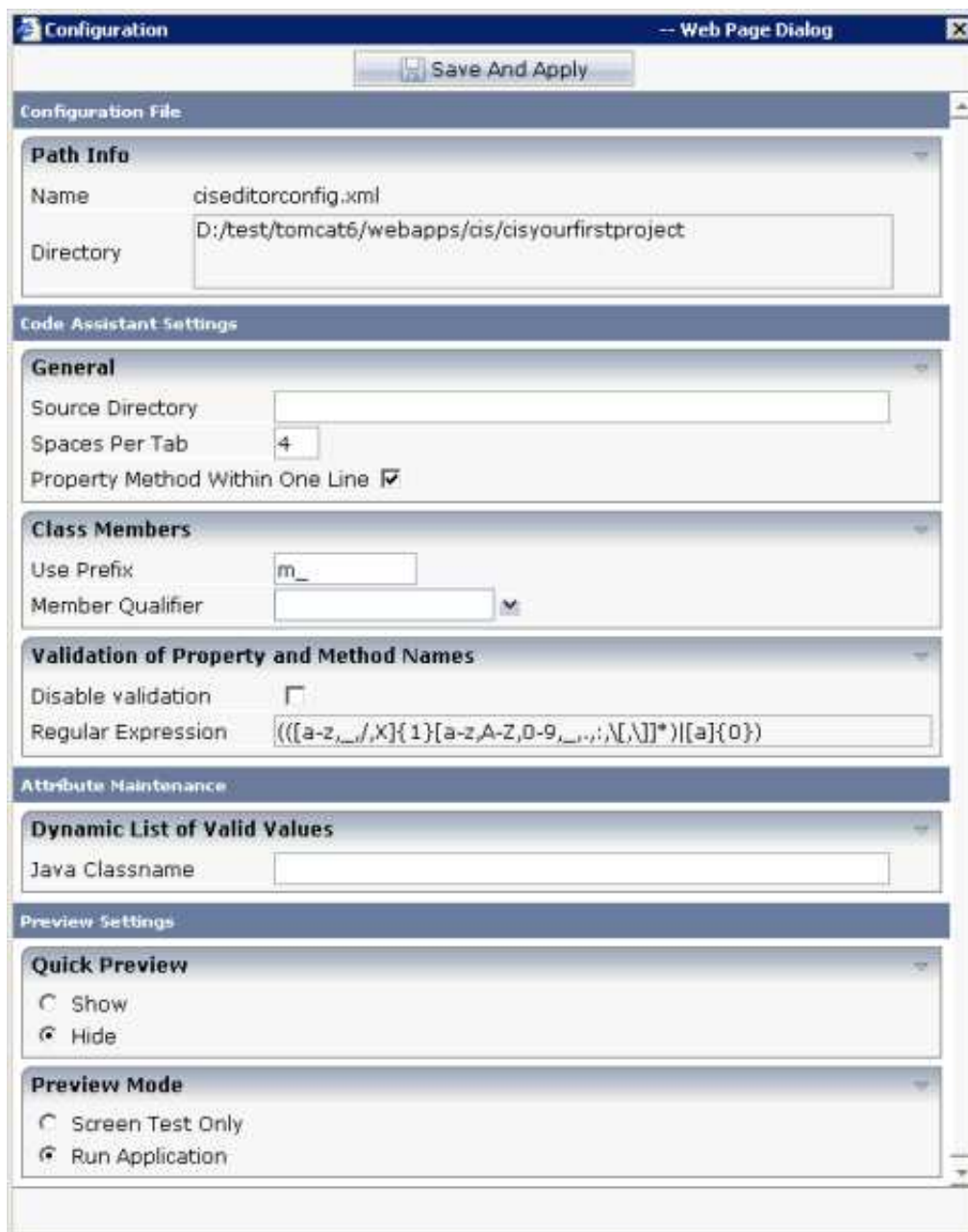
Preferences

You have to define the source directory into which the adapter classes for the current project are to be written. This directory is used by the Code Assistant.

To view/modify the configuration

1. From the **Home** tab of the Layout Painter, choose **Preferences**.

A dialog appears. For example:



The name of the configuration file and the path to the current project are shown at the top of the dialog.

The following options are available:

Source Directory

The path to your Java sources. This text box is initially empty.

It is not mandatory that your sources are stored in the *<your-webapplication>* directory. They can also be stored in another directory.

Spaces Per Tab

The number of spaces that are to be inserted into the code when you add tabs with the Code Assistant.

Property Method Within One Line

When this check box is selected, source code is written as follows:

```
// property >fieldText5<
String m_fieldText5;
public String getFieldText5()
{
    return m_fieldText5;
}
public void setFieldText5(String value)
{
    m_fieldText5 = value;
}
```

When this check box is not selected, source code is written as follows:

```
// property >fieldText5<
String m_fieldText5;
public String getFieldText5() { return m_fieldText5; }
public void setFieldText5(String value) { m_fieldText5 = value; }
```

Use Prefix

The prefix that is to be used for all properties in the adapter class. By default, the prefix "m_" is defined. Example: "m_fieldText5".

Member Qualifier

Using the options in this drop-down list box, you can specify whether the package is private, protected or public. Example:

```
protected String m_fieldText5;
```

When none of these options is explicitly defined in this text box, the package is public by default. Example:

```
public String m_fieldText5;
```

Disable Validation

When this check box is selected, properties and methods are not validated.

When this check box is not selected (default), properties and methods are validated. In this case, the regular expressions listed in the **Regular Expression** text box (read only) are used for the validation.

Java Classname

You can specify a Java class which implements the interface `IEditorValidValuesProvider`. For details on this interface, see the Java API documentation. You have to define the package, without the extension ".java". For example:

```
com.softwareag.cis.Testclass
```

Quick Preview

You can define whether the quick preview button is to be shown at the top of the Layout Painter, in addition to the regular preview button. The following check boxes are available:

Show	The quick preview button is shown. When you choose this button, the changes to the adapter class are not applied. Only the layout in the preview area is updated.
Hide	The quick preview button is not shown (default).

See also *Previewing the Layout*.

Preview Mode

You can define which mode is to be active by default when the Layout Painter is started. The following check boxes are available:

Screen Test Only	Loads the layout with an empty adapter.
Run Application	The latest changes to the adapter class are used (default).

See also *Previewing the Layout*.

2. Choose the **Save and Apply** button to save your changes.

XML Schema (XSD)

You can create a ZIP file which includes an up-to-date XML (XSD) schema.

If required, you can save and extract the ZIP file and load the included *editor.xsd* file into an editor such as XML Spy in order to validate an XML layout which has been coded manually.

To create a ZIP file

- From the **Home** tab of the Layout Painter, choose **XML Schema (XSD)**.

A dialog appears asking whether you want to open or save the ZIP file.

Protocol

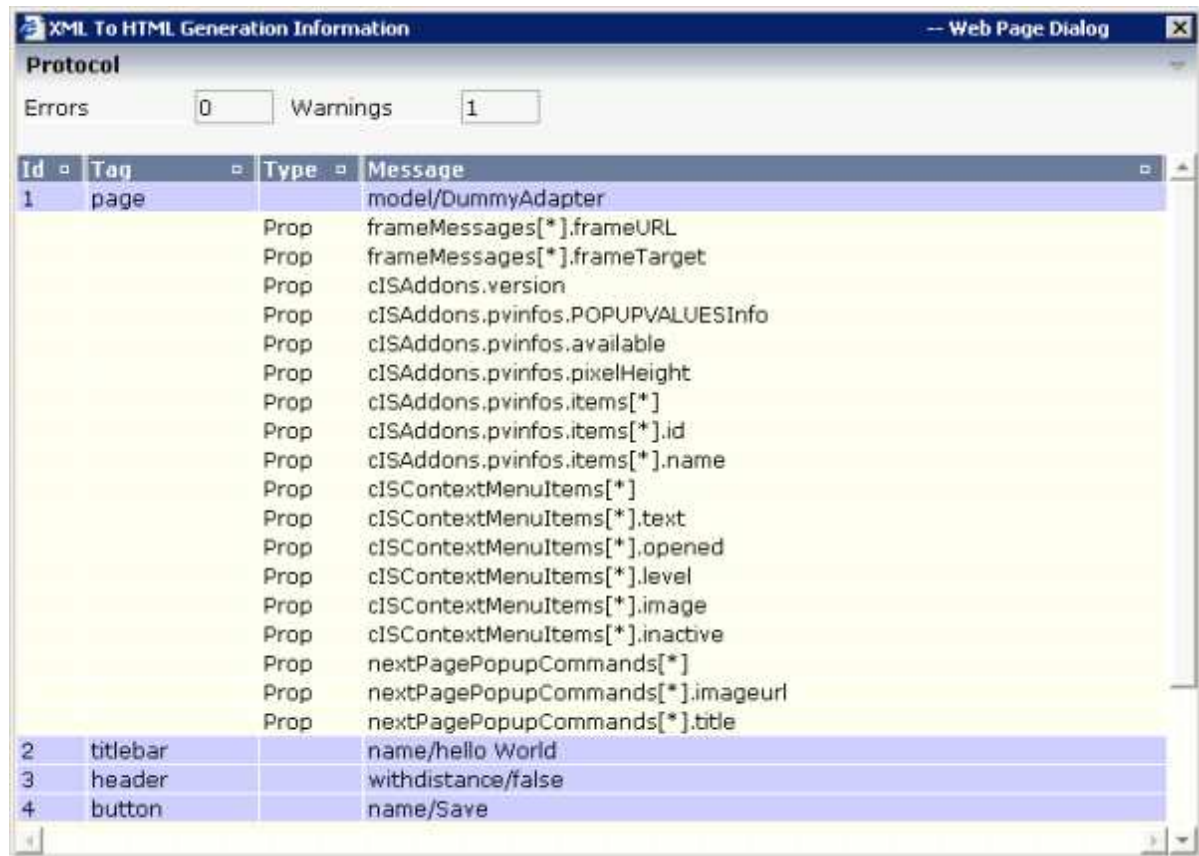
The protocol lists error and warnings for your current layout.

A warning is provided, for example, when a method you have defined in the properties area, has not yet been set. See *Using the Code Assistant* for further information.

To view the protocol

- From the **Home** tab of the Layout Painter, choose **Protocol**.

The following dialog appears.



Server Log

When a layout is not displayed correctly on the client, you can check the data which the server has sent to the client.

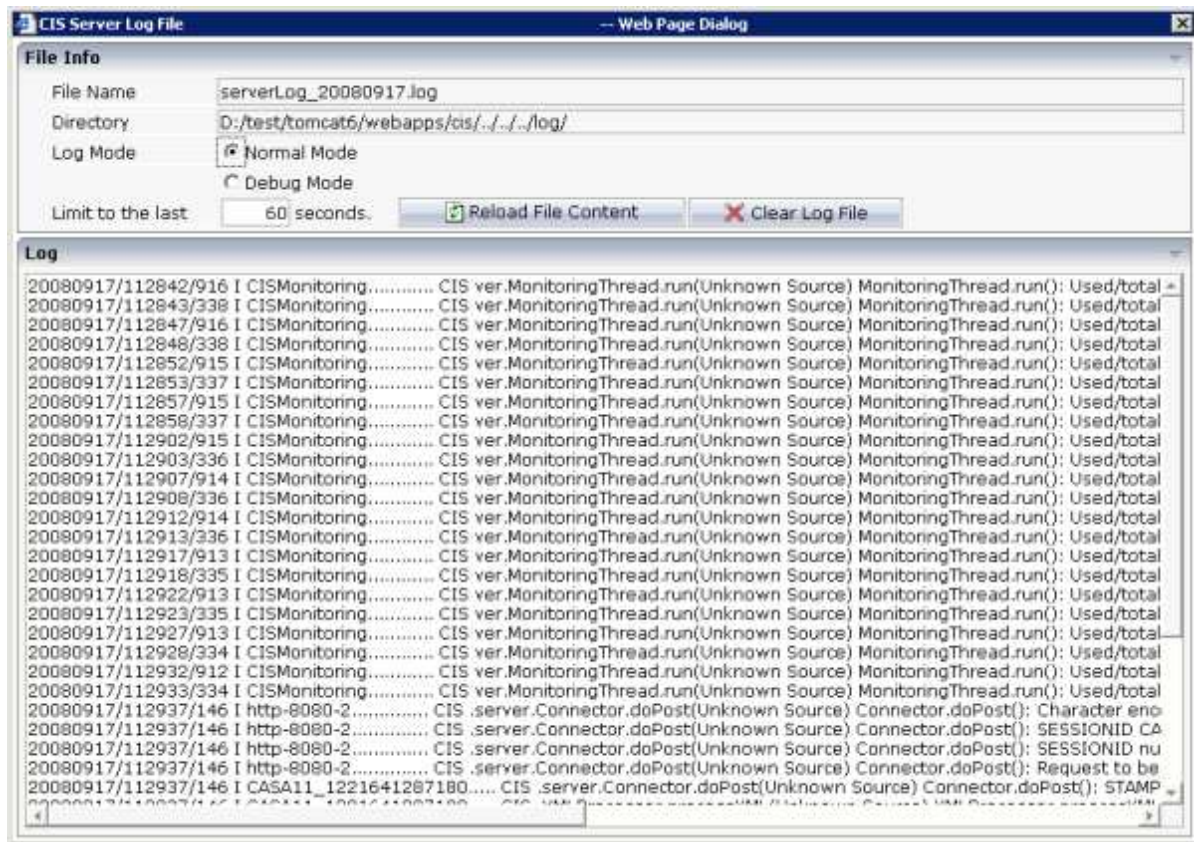
Note:

This dialog can also be accessed from the monitoring tool.

▶ To view the server log

- From the **Home** tab of the Layout Painter, choose **Server Log**.

A dialog appears. For example:



The name of the log file and the position at which it is stored is shown at the top of the dialog.

The following options are available:

Log Mode

Choose the option button for the required log mode: **Normal Mode** or **Debug Mode**.

In debug mode, the log contains more detailed information.

Limit to the last *n* seconds

This option is useful when used together with the **Reload File Content** button. You can specify a different number of seconds.

Reload File Content

When you choose this command button, only the last *n* seconds (see the above option) are shown in the server log.

Clear Log File

When you choose this command button, the content of the log file is deleted.

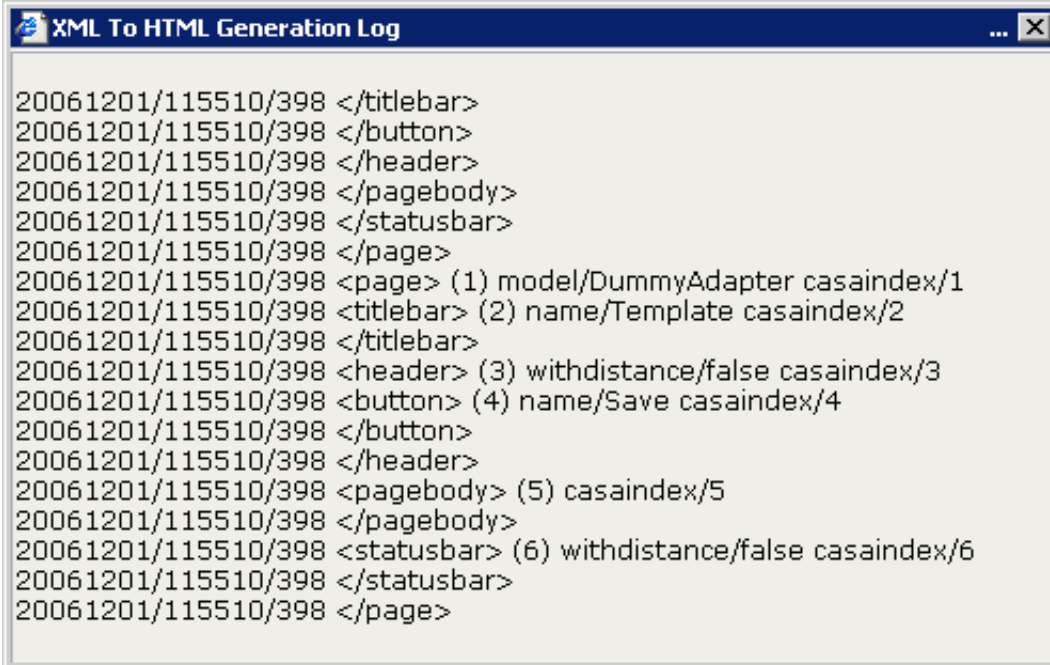
Log

You can display information on the controls that have been written to the generated HTML page.

▶ To view the log

- From the **Home** tab of the Layout Painter, choose **Log**.

A dialog appears. For example:



```
20061201/115510/398 </titlebar>
20061201/115510/398 </button>
20061201/115510/398 </header>
20061201/115510/398 </pagebody>
20061201/115510/398 </statusbar>
20061201/115510/398 </page>
20061201/115510/398 <page> (1) model/DummyAdapter casaindex/1
20061201/115510/398 <titlebar> (2) name/Template casaindex/2
20061201/115510/398 </titlebar>
20061201/115510/398 <header> (3) withdistance/false casaindex/3
20061201/115510/398 <button> (4) name/Save casaindex/4
20061201/115510/398 </button>
20061201/115510/398 </header>
20061201/115510/398 <pagebody> (5) casaindex/5
20061201/115510/398 </pagebody>
20061201/115510/398 <statusbar> (6) withdistance/false casaindex/6
20061201/115510/398 </statusbar>
20061201/115510/398 </page>
```

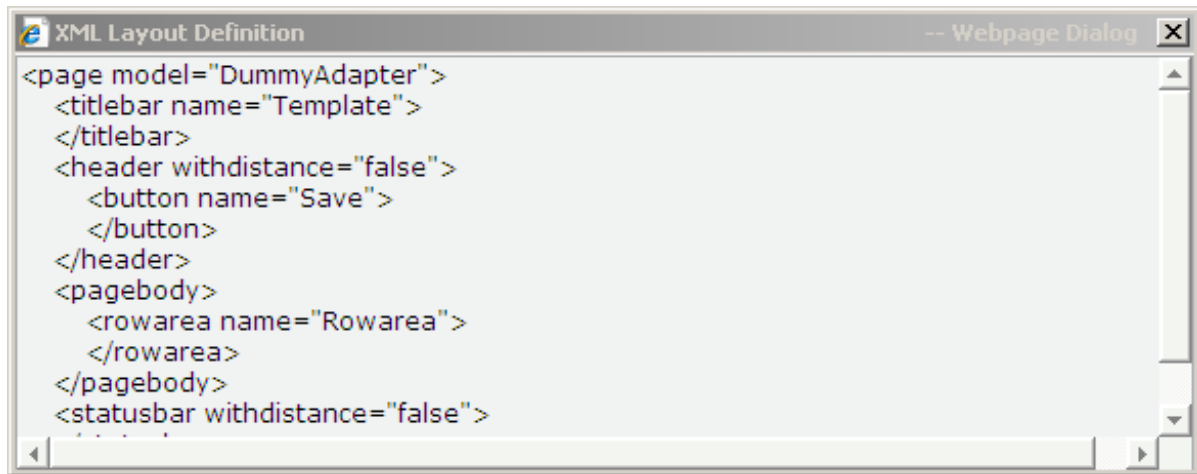
XML

When creating the layout, you can view the currently defined XML code at any point of time.

▶ To view the XML code

- From the **Edit** tab of the Layout Painter, choose **XML**.

A dialog appears. For example:

A screenshot of a dialog box titled "XML Layout Definition" with a "Webpage Dialog" icon in the top right corner. The dialog contains a text area with the following XML code:

```
<page model="DummyAdapter">
  <titlebar name="Template">
  </titlebar>
  <header withdistance="false">
    <button name="Save">
    </button>
  </header>
  <pagebody>
    <rowarea name="Rowarea">
    </rowarea>
  </pagebody>
  <statusbar withdistance="false">
```

Note:

The properties for a tag which you leave blank are not shown in the XML code.

Resources

You can display information on the resources that are used for the current layout. The resources are the XML layout definition, the Java source and the translation file.

▶ To view the resources

- From the **Edit** tab of the Layout Painter, choose **Resources**.

A dialog appears. For example:



The dialog shows the file names for the different resources, the paths to these files, and the date and time when the resources have been modified last.

A traffic light is shown for each resource. One of the following colors can be shown:

Color	Description
Red	The resource cannot be written.
Yellow	Modifications have not yet been saved.
Green	The resource has been saved successfully.