

# Literal Translator

This chapter covers the following topics:

- About the Literal Translator
  - Invoking the Literal Translator
  - Loading the Literals of a Layout
  - Editing the Literals
  - Adding a New Text ID
  - Removing Text IDs
- 

## About the Literal Translator

The Literal Translator can be used to translate text IDs. You can also use it to add and remove text IDs.

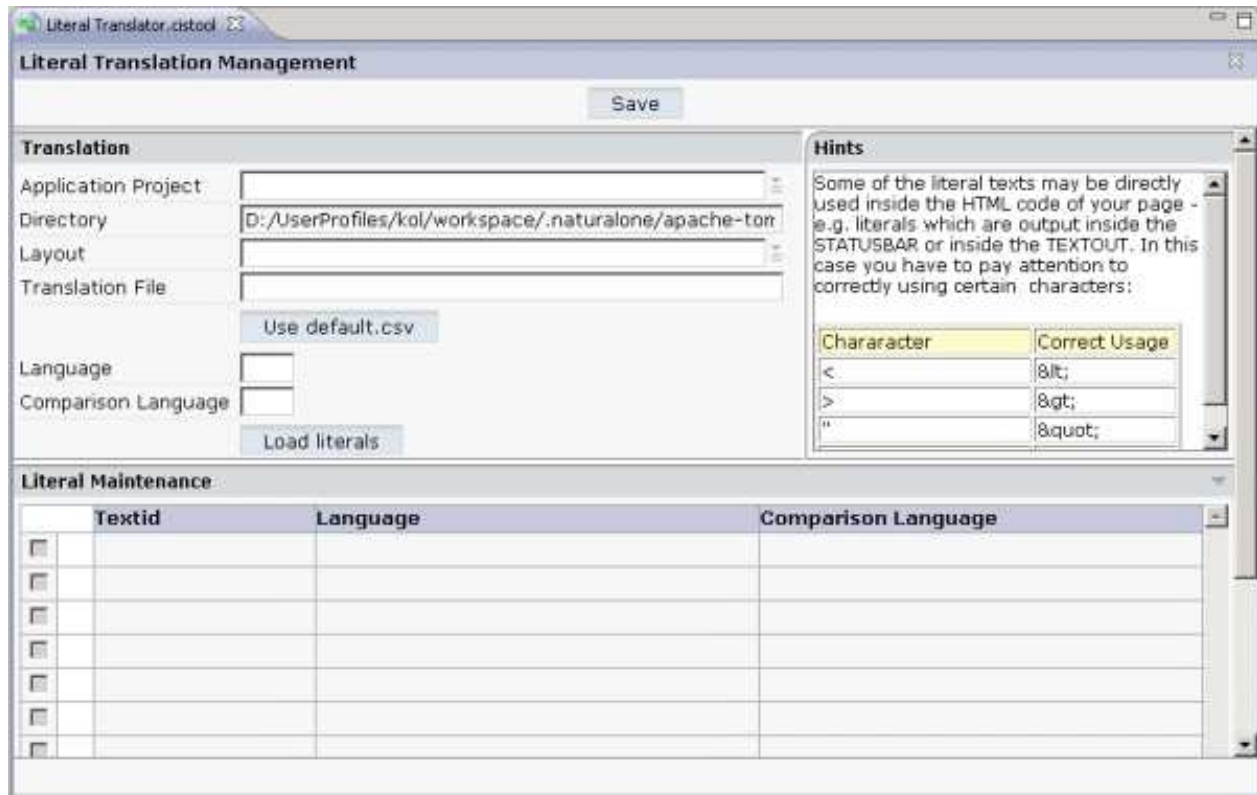
**Note:**

Text IDs can also be translated using the Literal Assistant.

The concept of the multi language management is described in *Multi Language Management*. It is recommended that you read this information before you proceed with the information below.

## Invoking the Literal Translator

When you invoke the Literal Translator, the following is shown:



### ▶ To invoke the Literal Translator

1. In the **Navigator** view, select the project for which you want to invoke the Literal Translator.
2. Invoke the context menu and from the **Ajax Developer** menu, choose **Literal Translator**.

## Loading the Literals of a Layout

You can load and modify the texts for a specific layout in one language. Optionally, can also load the literals of a second language for comparison purposes.

### Note:

If you want to open the literals for a different layout or project, you have to close the Literal Translator and start it once more. Otherwise, the required options are not enabled.

### ▶ To load the literals of a layout

1. In the text box of the **Application Project** drop-down list box, enter the name of the project which contains your layout.  
Or:  
Open the drop-down list box and choose the project from the resulting dialog.
2. In the text box of the **Layout** drop-down list box, enter the name of the layout for which you want to translate the literals.

Or:

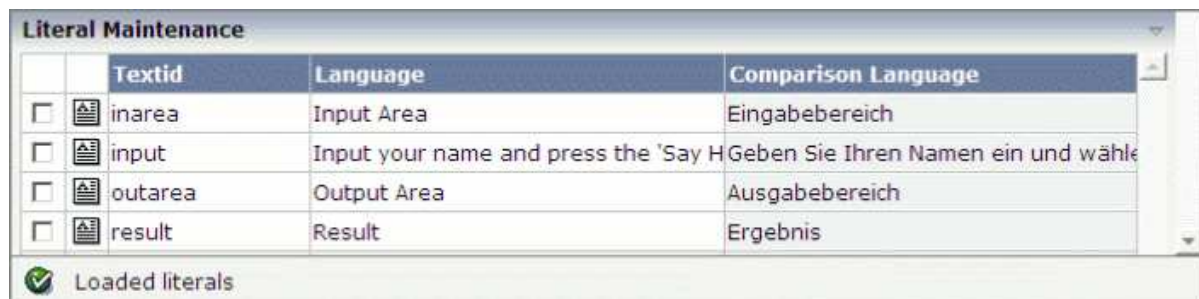
Open the drop-down list box and choose the layout from the resulting dialog.

3. In the **Translation File** text box, enter the name and extension of your translation file.

#### Notes:

1. It is not required that the specified translation file already exists. You can add new text IDs as described below. When you choose the **Save** button, the translation file will be created and all of your definitions are written to it. Literals that have been created in this way, still have to be assigned to the corresponding controls, for example, using the Literal Assistant.
2. If you do not enter the name of a translation file, *default.csv* is automatically provided in this text box.
3. You can use the **Use default.csv** button to enter *default.csv* in this text box.
4. In the **Language** text box, enter the abbreviation for the language that you want to use. See also *Language Manager*.
5. Optional. If you want to display the literal of a second language for comparison purposes, enter the abbreviation for this language in the **Comparison Language** text box.
6. Choose the **Load literals** button.

The contents of the translation file(s) are loaded and the literals are shown at the bottom. Example:



	Textid	Language	Comparison Language
<input type="checkbox"/>	inarea	Input Area	Eingabebereich
<input type="checkbox"/>	input	Input your name and press the 'Say H	Geben Sie Ihren Namen ein und wähle
<input type="checkbox"/>	outarea	Output Area	Ausgabebereich
<input type="checkbox"/>	result	Result	Ergebnis

Loaded literals

## Editing the Literals

You can edit the literals that are shown in the **Language** column. It is not possible to edit the literals of the comparison language.

### ▶ To edit the literals

1. Enter the new text directly in the **Language** column.

Or:

To edit a literal in a separate dialog, choose the following icon which is shown next to the literal (this is helpful with long literals):



If you have opened a separate dialog, you have to choose the **Take Over** button in order to confirm your changes and to close the dialog.

2. Choose the **Save** button to write your changes to the translation file.

## Adding a New Text ID

You can add a new text ID to the translation file and specify a literal for it.

### To add a new text ID

1. Choose the **New Text ID** button which is shown below the list of literals.

An empty line is added to the list.

2. Enter the literal in the **Language** column.
3. Choose the **Save** button to write the new text ID and literal to the translation file.

## Removing Text IDs

You can remove one or more text IDs from the translation file.

### To remove text IDs

1. Select the check boxes in front of the text IDs that you want to remove.
2. Choose the **Remove Selected Text ID(s)** button which is shown below the list of literals.
3. Choose the **Save** button to remove the text IDs from the translation file.