

webMethods Module for AS4 Installation and User's Guide

Version 9.0

March 2014

This document applies to webMethods Module for AS4 Version 9.0 and to all subsequent releases.

Specifications contained herein are subject to change and these changes will be reported in subsequent release notes or new editions.

Copyright © 2013-2014 Software AG, Darmstadt, Germany and/or Software AG USA Inc., Reston, VA, USA, and/or its subsidiaries and/or its affiliates and/or their licensors.

The name Software AG and all Software AG product names are either trademarks or registered trademarks of Software AG and/or Software AG USA Inc. and/or its subsidiaries and/or its affiliates and/or their licensors. Other company and product names mentioned herein may be trademarks of their respective owners.

Detailed information on trademarks and patents owned by Software AG and/or its subsidiaries is located at <http://documentation.softwareag.com/legal/>.

Use of this software is subject to adherence to Software AG's licensing conditions and terms. These terms are part of the product documentation, located at <http://documentation.softwareag.com/legal/> and/or in the root installation directory of the licensed product(s).

This software may include portions of third-party products. For third-party copyright notices and license terms, please refer to "License Texts, Copyright Notices and Disclaimers of Third Party Products". This document is part of the product documentation, located at <http://documentation.softwareag.com/legal/> and/or in the root installation directory of the licensed product(s).

Table of Contents

About this Guide	5
Document Titles	5
Document Conventions	7
Documentation Installation	7
Online Information	8
1. Concepts	11
What Is webMethods Module for AS4?	12
Features	12
Messaging Model	13
Message Exchange Patterns	14
One-Way/Push MEP	15
One-Way/Pull MEP	15
Module for AS4 as the Responding MSH	16
Module for AS4 as the Initiating MSH	17
Architecture and Components	17
2. Installing webMethods Module for AS4	21
Overview	22
Requirements	22
Installing webMethods Module for AS4	22
Uninstalling webMethods Module for AS4	23
3. Defining Trading Networks Information	25
Overview	26
Defining Trading Networks Profiles	26
Defining Your Enterprise Profile	26
Defining Trading Partner Profiles	27
Defining Trading Partner Agreements	28
Defining TN Processing Rules	28
4. Configuring Module for AS4	29
Overview	30
Configuring Trading Partner Agreements	30
Configuring Optional Features	33
Configuring Error Handling	34
Configuring Security	34
Configuring Receipts	37
Using Algorithm Suites	38
Configuring Integration Server to Use SSL	39
Configuring Reception Awareness	39

Configuring Payload Compression	41
Configuring Splitting and Joining ebMS Messages	41
Configuring Multi-Hop Messaging	43
Configuring Multi-Hop Messaging at an Endpoint	43
Configuring Multi-Hop Messaging at an Intermediary	44
Configuring Large Payload Handling	44
Configuring AS4 Configuration Properties	45
5. Viewing Information About AS4 Transactions	49
Overview	50
Viewing AS4 Transactions	50
User Status and AS4 Messages	50
Status Values for User Messages at the Sending Side	50
Status Values for Message Fragments at the Sending Side	51
Status Values for Pull Signals at the Sending Side	52
Status Values for User Messages at the Receiving Side	52
Status Values for Message Fragments at the Receiving Side	53
Status Values for Pull Signals at the Receiving Side	53
6. Logging and Error Handling	55
Overview	56
Error Message Logging	56
Error Codes	56
A. Built-In Services	73
Overview	74
Summary of Elements	74
wm.ip.estd.as4.msh:submit	74
wm.ip.estd.as4.msh:sendPull	78
wm.ip.estd.as4.util.pull:clearMPC	78
wm.ip.estd.as4.util.pull:getMPCContents	79
wm.ip.estd.as4.util.multihop:routingFunction	79
wm.ip.estd.as4.util.retry:cancelRetry	79
wm.ip.estd.as4.util.split:getGroupList	80
wm.ip.estd.as4.util.split:clearGroup	81
B. Supported P-Mode Parameters	83
Overview	84
Supported P-Mode Parameters	84

About this Guide

This guide describes how to install, configure, and use webMethods Module for AS4. It contains information for administrators and application developers who want to exchange AS4-specific messages with other trading partners using webMethods Module for AS4.

To use this guide effectively, you must be familiar with:

- webMethods Integration Server and Integration Server Administrator, and understand the concepts and procedures in the Integration Server administration guide for your release. See “About this Guide” for specific document titles.
- webMethods Trading Networks, and understand the concepts and procedures described in the various Trading Networks guides.
- Software AG Designer, and understand the concepts and procedures described in the Designer online help.
- My webMethods Server and its interface My webMethods, and understand the concepts and procedures described in *Administering My webMethods Server*.
- *OASIS ebXML Messaging Services Version 3.0: Part 1, Core Features Specification* and *OASIS ebXML Messaging Services Version 3.0: Part 2, Advanced Features*.
- AS4 Profile of the *OASIS ebMS 3.0 Version 1.0 Specification*.

Document Titles

Some webMethods document titles have changed during product releases. The following table will help you locate the correct document for a release on the Software AG Documentation Web site or the Empower Product Support Web site.

Documentation	8.2	9.0 and later
Designer Process Development online help		
<i>webMethods BPM Process Development Help</i>	x	x
Designer Service Development online help		
<i>webMethods Service Development Help</i>	x	x
Integration Server administration guide		
<i>webMethods Integration Server Administrator's Guide</i>		x
<i>Administering webMethods Integration Server</i>	x	
Integration Server built-in services reference guide		

Documentation	8.2	9.0 and later
<i>webMethods Integration Server Built-In Services Reference</i>	x	x
Integration Server clustering guide		
<i>webMethods Integration Server Clustering Guide</i>	x	x
Integration Server publish-subscribe developer's guide		
<i>Publish-Subscribe Developer's Guide</i>	x	x
My webMethods administration guide		
<i>Administering My webMethods Server</i>	x	x
Optimize administration guide		
<i>Administering webMethods Optimize</i>	x	x
Optimize user's guide		
<i>webMethods Optimize User's Guide</i>		x
<i>Optimizing BPM and System Resources with BAM: webMethods Optimize User's Guide</i>	x	
Process Engine administration guide		
<i>Administering webMethods Process Engine</i>	x	x
Trading Networks administration guide		
<i>webMethods Trading Networks Administrator's Guide</i>		x
<i>Building B2B Integrations: webMethods Trading Networks Administrator's Guide</i>	x	
Trading Networks built-in services reference guide		
<i>webMethods Trading Networks Built-In Services Reference</i>	x	x
Trading Networks concepts guide		
<i>webMethods Trading Networks Administrator's Guide and webMethods Trading Networks User's Guide</i>		x
<i>Understanding webMethods B2B: webMethods Trading Networks Concepts Guide</i>	x	
Trading Networks user's guide		
<i>webMethods Trading Networks User's Guide</i>		x
<i>Managing B2B Integrations: webMethods Trading Networks User's Guide</i>	x	
webMethods installation guide		
<i>Installing webMethods Products and Using the Software AG Installer</i>	x	x

Documentation	8.2	9.0 and later
webMethods logging guide		
<i>webMethods Audit Logging Guide</i>	x	x
webMethods upgrade guide		
<i>Upgrading webMethods Products</i>	x	x

Document Conventions

Convention	Description
Bold	Identifies elements on a screen.
Narrowfont	Identifies storage locations for services on webMethods Integration Server, using the convention <i>folder.subfolder:service</i> .
UPPERCASE	Identifies keyboard keys. Keys you must press simultaneously are joined with a plus sign (+).
<i>Italic</i>	Identifies variables for which you must supply values specific to your own situation or environment. Identifies new terms the first time they occur in the text.
Monospace font	Identifies text you must type or messages displayed by the system.
{ }	Indicates a set of choices from which you must choose one. Type only the information inside the curly braces. Do not type the { } symbols.
	Separates two mutually exclusive choices in a syntax line. Type one of these choices. Do not type the symbol.
[]	Indicates one or more options. Type only the information inside the square brackets. Do not type the [] symbols.
...	Indicates that you can type multiple options of the same type. Type only the information. Do not type the ellipsis (...).

Documentation Installation

You can download the product documentation using the Software AG Installer. The documentation is downloaded to a central directory named `_documentation` in the main installation directory (SoftwareAG by default).

Online Information

You can find additional information about Software AG products at the locations listed below.

If you want to...	Go to...
Access the latest version of product documentation.	Software AG Documentation website http://documentation.softwareag.com
Find information about product releases and tools that you can use to resolve problems. See the Knowledge Center to:	Empower Product Support website https://empower.softwareag.com
<ul style="list-style-type: none">■ Read technical articles and papers.■ Download fixes and service packs (9.0 SP1 and earlier).■ Learn about critical alerts. See the Products area to:	
<ul style="list-style-type: none">■ Download products.■ Download certified samples.■ Get information about product availability.■ Access older versions of product documentation.■ Submit feature/enhancement requests.	

If you want to...	Go to...
<ul style="list-style-type: none">■ Access additional articles, demos, and tutorials.■ Obtain technical information, useful resources, and online discussion forums, moderated by Software AG professionals, to help you do more with Software AG technology.■ Use the online discussion forums to exchange best practices and chat with other experts.■ Expand your knowledge about product documentation, code samples, articles, online seminars, and tutorials.■ Link to external websites that discuss open standards and many web technology topics.■ See how other customers are streamlining their operations with technology from Software AG.	<p>Software AG Developer Community for webMethods</p> <p>http://communities.softwareag.com/</p>

1 Concepts

■ What Is webMethods Module for AS4?	12
■ Messaging Model	13
■ Architecture and Components	17

What Is webMethods Module for AS4?

The ebXML Messaging Services (ebMS) specification was developed to provide organizations with a standard method to exchange business messages over the Internet. However, ebMS supports a broad range of features, many of which are not required by the typical organization. To address this, OASIS developed a leaner profile, the *AS4 Profile of ebMS 3.0 Version 1.0*.

webMethods Module for AS4 is an implementation of the AS4 ebHandler conformance profile specified in the AS4 Profile. The module facilitates the secure exchange of messages, independent of payload type, across your trading network.

Features

Module for AS4 includes the following features:

- **Message Exchange Patterns.** A *message exchange pattern* (MEP) is a template that defines the pattern that messages take as they are exchanged between two trading partners. The module supports the following ebMS MEPs for both the sender and the receiver:
 - **One-way/Push.** The module can “push” a user message to a trading partner.
 - **One-way/Pull.** The module can both send and receive a pull signal, and process it.For more information about message exchange patterns, see [“Configuring Trading Partner Agreements” on page 30](#).
- **Message Packaging.** On both the sending and receiving sides, the module supports the creation of signal and user messages. Also, the module supports attachments and message properties.
- **Message Partition Channels (MPC).** In addition to the default channel, the module supports MPCs to allow for selective pulling by a partner Messaging Service Handler (MSH).
- **Message Persistence.** The module saves all incoming and outgoing messages in the Trading Networks database.
- **Reliable Messaging.** The module supports:
 - **Reception Awareness.** When an initiating MSH does not get a receipt confirming the user message has been received, the MSH can notify the producer.
 - **Message Retry.** When an initiating MSH does not get a receipt confirming the user message has been received, the MSH can resend the user message.
 - **Duplicate Detection.** A responding MSH can detect and eliminate duplicate user messages.

- **Security.** Module for AS4 is based on the *Web Services Security 1.1 (WSS 1.1)* security specifications. The module provides the following security features:
 - **Signs and encrypts messages.** The module uses the *Web Services Security X.509 Certificate Token Profile* to sign and encrypt messages. When signing and encrypting messages, you can choose to sign and encrypt either the entire message or parts of the message. When both signature and encryption are required, the message is signed prior to being encrypted.
 - **Authenticates Security UsernameTokens and supports password hashing.** The module uses the *Web Services Security UsernameToken Profile* to authenticate Security UsernameTokens.
 - **Authorizes a message at the P-Mode level.** The module supports authorization to access resources such as Message Partition Channels (MPC), which pull signals access to pull messages.
 - **Supports Secure Sockets Layer (SSL).** The module supports transport level security for transmitting AS4 messages.
- **Customizable Processing Mode (P-Mode) Parameters.** P-Mode parameters are essential to attaining interoperability between two trading partners because they define how a message should be processed. P-Modes in Module for AS4 are represented as trading partner agreements (TPA).

For a list of supported P-Mode parameters, see [“Supported P-Mode Parameters” on page 83](#).

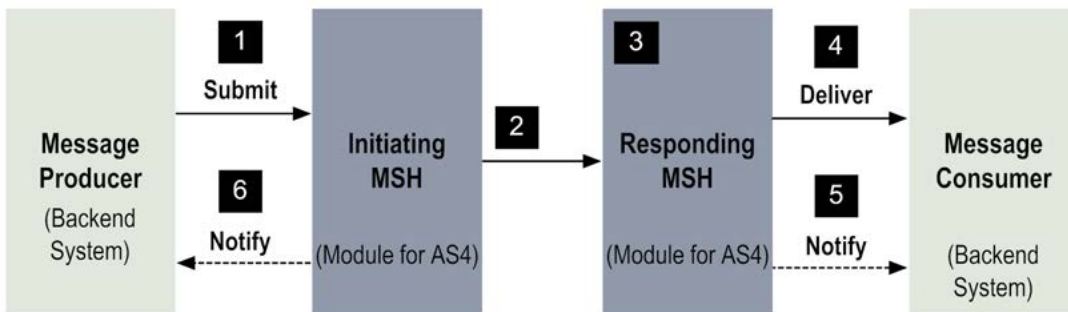
- **Payload Compression.** The module is capable of providing configurable compression and decompression of application payloads.
- **Splitting and Joining ebMS Messages.** When a large SOAP-rooted, MIME Multipart/Related message is sent, Module for AS4 can split the message into smaller SOAP fragments so that the message can be transmitted more efficiently. Once all the fragments reach the receiving MSH, they are reassembled into the original message and then stored in the Trading Networks database.
- **Multi-hop Messaging.** The module is capable of transmitting messages across intermediaries, which route and forward messages while maintaining reliability and security. Multi-hop messaging allows the sending MSH to disregard lower-level transport parameters because it is not concerned with the final message destination.
- **Error Handling.** The module reports errors encountered during message processing, as specified in the AS4 ebHandler conformance profile.
- **Large Payload Handling** During message processing, the module can optimize processing of messages by storing large payloads on the hard disk drive rather than keeping them in memory.

Messaging Model

The messaging model for AS4-specific communication requires these components:

- **Messaging Service Handlers (MSH).** MSHs generate or process AS4-compliant messages. They act as either sender (initiating MSH) or receiver (responding MSH).
- **Message Producer.** The message producer interacts with an initiating MSH to initiate sending a user message.
- **Message Consumer.** The message consumer interacts with a responding MSH to consume data from a received user message.

The following diagram illustrates the messaging model. For a description of each step, see the table that follows the diagram.



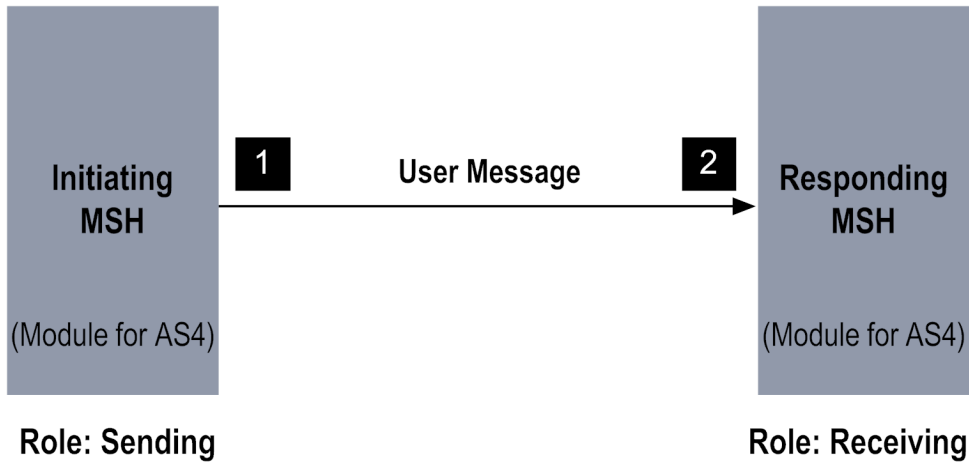
Step	Description
1	The message producer submits data to the initiating MSH.
2	The initiating MSH packages the submitted data as a user message and sends this message to the responding MSH.
3	The responding MSH receives and processes the user message. The responding MSH sends either a receipt or an error to the initiating MSH to indicate whether or not the message was processed successfully.
4	The responding MSH delivers the data packaged as the user message to the message consumer.
5	The responding MSH may optionally notify the message consumer about the status of the received message.
6	The initiating MSH may optionally notify the message producer about the status of the message that was sent.

Message Exchange Patterns

To facilitate the exchange of business documents across an HTTP/HTTPS connection to a trading partner, Module for AS4 supports both message pushing using the One-Way/Push MEP and message pulling using the One-Way/Pull MEP.

One-Way/Push MEP

The One-Way/Push MEP transfers a single user message from the initiating MSH to the responding MSH, as illustrated in the diagram. The user message can be carried over either a one-way or a two-way underlying protocol.



Step	Description
1	The initiating MSH sends the data packaged as a user message to the responding MSH.
2	The responding MSH receives and processes the user message.

When using the One-Way/Push MEP, use the `wm.ip.estd.as4.msh:submit` service to package the submitted payload(s) as a user message and send it to the responding MSH. The `submit` service uses the values of the `toPartyId`, `toPartyIdType`, `fromPartyId`, `fromPartyIdType`, and `pmodeID` input parameters to fetch the appropriate TPA. The values in the TPA are then used to generate and send the user message.

For information about configuring the module to use the One-Way/Push MEP, see [“Configuring Trading Partner Agreements” on page 30](#). For more information about the `submit` service, see [“Built-In Services” on page 73](#).

One-Way/Pull MEP

Like One-Way/Push, the One-Way/Pull MEP transfers a single user message, but the One-Way/Pull MEP is initiated by the receiver of the user message. The Initiating MSH sends a pull signal message to the Responding MSH.

module first retrieves the bizDocId from the cache in a First In, First Out manner, and then retrieves the user message that corresponds to this bizDocId from Trading Networks. The retrieved message is then sent to the initiating MSH.

For more information about configuring the module to use the One-Way/Pull MEP, see [“Configuring Trading Partner Agreements” on page 30](#). For more information about the submit service, see [“Built-In Services” on page 73](#).

Important! When purging the transaction analysis in Trading Networks for any reason, be careful not to delete user messages in the QUEUED state.

Whenever you purge the transaction analysis, use the `wm.ip.estd.as4:clearMPC` service to manually clear all the BizDocIds that are queued in the cache.

Module for AS4 as the Initiating MSH

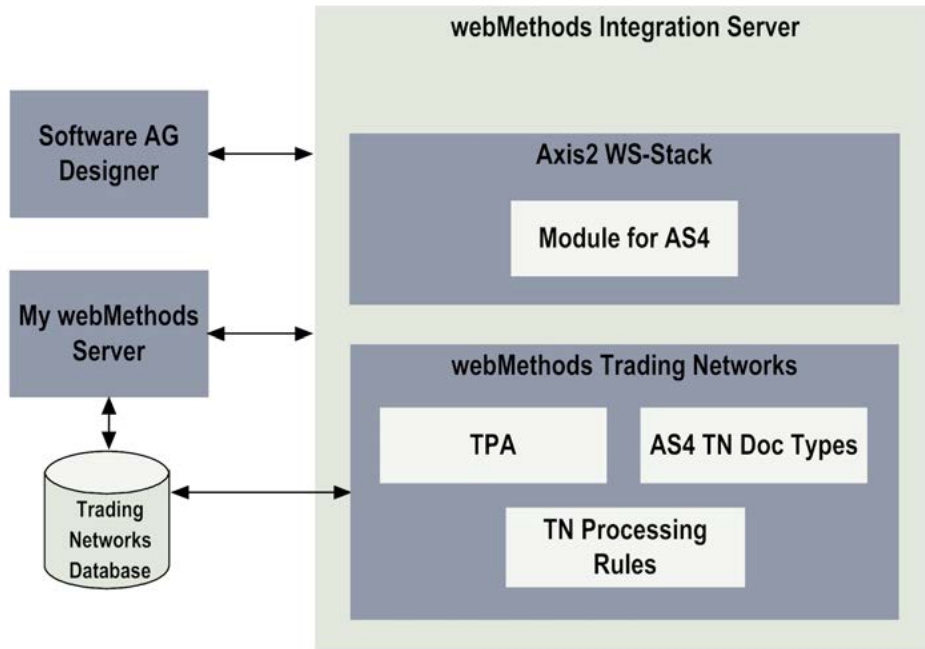
When Module for AS4 plays the role of initiating MSH, the pull transfer is initiated by the `wm.ip.estd.as4.msh:sendPull` service. The module uses the `mpc` and `pmodeId` input parameters that are passed to this service to fetch the appropriate TPA and identify the messaging parameters for the transfer.

The parameters specified in the requestSM leg of the TPA are used to generate the pull signal and identify the address of the responding MSH. When the user message is received as a response to the pull signal, the MSH uses the requestUM leg of the TPA to process the user message.

For more information about configuring the module to use the One-Way/Pull MEP, see [“Configuring Trading Partner Agreements” on page 30](#). For more information about the sendPull service, see [“Built-In Services” on page 73](#).

Architecture and Components

The following diagram illustrates the module’s architecture and components, and the component relationships. For further explanation, see the table that follows the diagram.



Component	Description
webMethods Integration Server	<p>webMethods Integration Server is the underlying foundation of the webMethods architecture. It processes requests from, and relays responses to, a backend system.</p> <p>Integration Server contains the IS document types and services that you use to create the module's services.</p> <p>The module is compatible with Integration Server 9.0 and higher.</p>
Software AG Web Services Stack	<p>Software AG Web Services Stack is a toolkit that handles the complex process of sending and receiving web services requests in Software AG products, in this case, webMethods Module for AS4.</p>
webMethods Module for AS4	<p>webMethods Module for AS4 supports secure business-to-business communications based on the AS4 ebHandler conformance profile. The module contains the core WmAS4 package, which includes the services for implementing the AS4 functionality.</p>

Component	Description
webMethods Trading Networks	<p>webMethods Trading Networks enables your enterprise to link with other companies (buyers, suppliers, strategic partners) and marketplaces to form a business-to-business trading network.</p> <p>Module for AS4 uses Trading Networks and TN document types to:</p> <ul style="list-style-type: none"> ■ Recognize the user message and signal message being processed ■ Create BizDocEnvelopes ■ Save BizDocEnvelopes to the Trading Networks database <p>Customizable Trading Networks processing rules allow for custom processing.</p> <p>The P-Mode parameters defined in the ebMS 3.0 specification are modeled as Trading Networks TPAs. These TPAs can be customized using My webMethods. The TN document types are created automatically during startup of the WmAS4 package, and you can view them using My webMethods.</p> <p>For more information about P-Modes, see <i>OASIS ebXML Messaging Services 3.0 Version 1.0, Part 1, Core Features</i>. For more information about TPAs and processing rules, see <i>webMethods Trading Networks Administrator's Guide</i>.</p>
Trading Networks database	<p>Trading Networks database stores all information about the trading network, such as trading partner profiles, TN document types, and TPA information, and retrieves this information when needed. It can also save information about the documents that it processes, including the content of the documents.</p>
My webMethods Server and My webMethods	<p>My webMethods Server is a web-based monitoring and administration user interface for managing your webMethods components. You use My webMethods Server (and its user interface, My webMethods) with Module for AS4 to define and manage Trading Networks partner profiles, TPAs, custom attributes, processing rules, and TN document types. You also use My webMethods to monitor the message transaction details.</p> <p>During design time, you define your trading partner profiles using My webMethods. The profiles contain the information that Trading Networks requires to exchange business documents with your trading partners.</p>

Component	Description
Software AG Designer	At design time, use Designer to edit the module's services and create customized solutions. Designer also provides tools for testing and debugging the solutions you create.

2 Installing webMethods Module for AS4

■ Overview	22
■ Requirements	22
■ Installing webMethods Module for AS4	22
■ Uninstalling webMethods Module for AS4	23

Overview

This chapter explains how to install, upgrade, and uninstall webMethods Module for AS4. The instructions use the Software AG Installer and the Software AG Uninstaller wizards. For complete information about the wizards or other installation methods, or to install other webMethods products, see *Using the Software AG Installer*.

Requirements

For a list of the operating systems and webMethods products that Module 9.0 for AS4 supports, see *webMethods eStandards Modules System Requirements*, available in the webMethods area of the Software AG Documentation website.

Installing webMethods Module for AS4

To install webMethods Module for AS4

- 1 If you are installing Module for AS4 on an already installed webMethods Integration Server, shut down the Integration Server. Make sure that the version of Integration Server is 9.0 or higher.
- 2 Download Software AG Installer from the Empower Product Support website at <https://empower.softwareag.com>.
- 3 Start the Installer wizard.
- 4 Choose the webMethods release that includes the Integration Server on which to install the module. For example, if you want to install the module on Integration Server 9.5, choose the 9.5 release.
- 5 Specify the installation directory as follows:
 - If you are installing Module for AS4 on an existing Integration Server, specify the installation directory that contains the host Integration Server.
 - If you are installing both the host Integration Server and Module for AS4 for the first time, specify the directory to use. (The default is SoftwareAG.)
- 6 In the product selection list, navigate to eStandards > webMethods Module 9.0 for AS4. Install any other required products as indicated in *webMethods eStandards Modules System Requirements*.

Software AG Installer installs the WmAS4 package in the *Integration Server_directory/packages* directory.

- 7 To install documentation for Module for AS4, select **Documentation > webMethods Adapters and eStandards Modules Documentation**.

Alternatively, you can download the documentation at a later time from the Software AG Documentation website.

- 8 After Installer completes the installation, close the wizard.
- 9 Apply the latest fixes for the webMethods products that Module for AS4 requires as specified in *webMethods eStandards Modules System Requirements*.
- 10 Start the host Integration Server.

Uninstalling webMethods Module for AS4

To uninstall Module for AS4

- 1 Shut down the Integration Server that hosts Module for AS4.
- 2 Start Software AG Uninstaller as follows:

System	Instructions
Windows	In the Add or Remove Programs window, select the Software AG Products 9.x installation_directory , where <i>installation_directory</i> is the Integration Server installation directory in which Module for AS4 is installed.
UNIX	Navigate to the <i>installation_directory</i> /bin directory of the installation that includes the Integration Server on which Module for AS4 is installed and enter <code>uninstall (wizard)</code> or <code>uninstall -console (console mode)</code> .

- 3 In the product selection list, select **eStandards > webMethods Module 9.0 for AS4**.
- 4 Uninstaller does not delete files that you have created or configuration files associated with Module for AS4, nor does it delete the directory structure that contains those files. To delete those files, navigate to the *Integration Server_directory* \packages directory and delete the WmAS4 package directory.
- 5 Restart the Integration Server from which you uninstalled Module for AS4.

3 Defining Trading Networks Information

- Overview 26
- Defining Trading Networks Profiles 26
- Defining Trading Partner Agreements 28
- Defining TN Processing Rules 28

Overview

To use Trading Networks in conjunction with Module for AS4, perform the following tasks:

- Task 1 Define trading partner profiles, which identify the trading partners with whom you want to send and receive AS4 messages. For more information, see [“Defining Trading Networks Profiles” on page 26](#).
- Task 2 Define trading partner agreements (TPA), which contain a set of parameters that you can use to govern how business documents are exchanged between two trading partners. For more information, see [“Defining Trading Partner Agreements” on page 28](#).
- Task 3 Optionally, configure TN processing rules. For more information, see [“Defining TN Processing Rules” on page 28](#).

Defining Trading Networks Profiles

To use Module for AS4, you define a single trading partner profile for your organization (My Enterprise), and then you define a trading partner profile for each trading partner with whom you want to exchange AS4 messages using Trading Networks.

Defining Your Enterprise Profile

You define your enterprise profile by completing the fields on the Partner Profiles page in My webMethods.

To define My Enterprise

- 1 In My webMethods: Administration > Integration > B2B > Partner Administration > Partner Profiles.
- 2 Click Create My Enterprise.
- 3 Define the following required fields for your enterprise:

Field	Description
Corporation Name	The name of your enterprise.

Field	Description
External IDs > Add ID	<p>The value for the external ID type that your enterprise uses within documents.</p> <p>When exchanging documents, partners typically use a well-known ID scheme, such as a D-U-N-S number, to identify themselves within a document. You must select one of the ID types available in the Trading Networks database, and then specify the value that identifies your enterprise for that ID type.</p>

- 4 Click **Save and Close**.

Note: You must activate (or enable) your enterprise profile before you can exchange documents with trading partners. For instructions, see *webMethods Trading Networks Administrator's Guide*.

Defining Trading Partner Profiles

Define a trading partner profile for each trading partner with whom you want to exchange messages and files.

To define a trading partner profile

- 1 In My webMethods: **Administration > Integration > B2B > Partner Administration > Partner Profiles > Add Profile**.
- 2 Complete the following required fields for your trading partner:

Field	Description
Corporation Name	The name of your partner's enterprise.
External IDs > Add ID	<p>The value for the external ID type that your partner uses within documents.</p> <p>When exchanging documents, partners typically use a well-known ID scheme, such as a D-U-N-S number, to identify themselves within a document. You must select one of the ID types available in the Trading Networks database, and then specify the value that identifies your partner's enterprise for that ID type.</p>

- 3 Click **Save**.

For more information about defining trading partner profiles, see *webMethods Trading Networks Administrator's Guide*.

Defining Trading Partner Agreements

The Trading Partner Agreement (TPA) schema used by Module for AS4 is based on Processing Modes (P-Modes), which control how AS4 messages are processed. For more information about P-Modes, see *OASIS ebXML Messaging Services 3.0 Version 1.0, Part 1, Core Features*.

Every TPA is uniquely identified by a sender, a receiver, and an agreement ID. During a transaction between trading partners, the module retrieves the appropriate TPA based on this information and uses the TPA to process the business document being exchanged. Each TPA is associated with an MEP; therefore, for every MEP between a pair of trading partners, you must define a separate TPA.

Based on the message type, the module uses the appropriate leg (requestUM or requestSM) to process the AS4 message. For more information about configuring MEPs and legs, see [“Configuring Trading Partner Agreements” on page 30](#).

Define TPAs in My webMethods on the Administration > Integration > B2B > Trading Partner Agreements > Agreement Details page. For more information, see *webMethods Trading Networks Administrator’s Guide*.

Defining TN Processing Rules

When Module for AS4 starts, it registers the following TN document types:

- ebMS.3.0 UserMessage
- ebMS.3.0 Receipt Signal
- ebMS.3.0 PullRequest Signal
- ebMS.3.0 Error Signal
- ebMS 3.0 Message Fragment
- SOAP Fault

For each of these document types, the module also registers a default processing rule called “AS4 default rule”. This default processing rule is not mapped to any processing.

You can configure TN processing rules to specify customized processing for any of the registered TN document types. For more information about defining and managing processing rules, see *webMethods Trading Networks Administrator’s Guide*.

4 Configuring Module for AS4

■ Overview	30
■ Configuring Trading Partner Agreements	30
■ Configuring Optional Features	33
■ Configuring AS4 Configuration Properties	45

Overview

Before you can exchange messages with your trading partners, you must:

- 1 Create the trading partner agreement (TPA) between the two trading partners, and configure the TPA by specifying appropriate values for the various parameters that define the exchange between the trading partners. For example, *mepBinding* defines the type of ebMS message exchange pattern and the transport channel you want to use to exchange messages between two partners. For more information, see [“Configuring Trading Partner Agreements” on page 30](#) and [“Configuring Optional Features” on page 33](#).
- 2 Optionally, configure the AS4 configuration properties. For more information, see [“Configuring AS4 Configuration Properties” on page 45](#).

Configuring Trading Partner Agreements

To use Module for AS4 to exchange messages, you must create the trading partner agreement and define information pertinent to message exchange patterns (MEP).

To configure a trading partner agreement

- 1 In My webMethods: Administration > Integration > B2B > Trading Partner Agreements.
- 2 Click **Add TPA** and complete the information for the new TPA. For more information about TPAs, see [“Defining Trading Partner Agreements” on page 28](#) and *webMethods Trading Networks Administrator’s Guide*.
- 3 From the list of IS document types in the WmAS4 package, select `com.wm.esd.as4.documents.pmode:PMode`.
- 4 In the TPA Data panel, specify values for the following parameters:
 - a *mepBinding* Type of ebMS MEP and the transport channel to which the MEP is bound. Specify one of the following:
 - *One-Way/Push*—The submitted payloads are generated into a user message that is transferred to the responding MSH as part of the Submit service execution.
 - *One-Way/Pull*—The submitted payloads are generated into a user message that is held at the responding MSH until the initiating MSH sends a pull signal message to the responding MSH. In response to the pull signal message, the responding MSH sends the user message to the initiating MSH.
 - b *initiator* Information that identifies the initiator of the message exchange. Configure the following parameters:
 - *id* External ID of the initiating MSH.

For One-Way/Push, specify the external ID of the trading partner initiating the user message transmission, as defined in the trading partner profile. The contents of this parameter map to the element `eb:Messaging/eb:UserMessage/eb:PartyInfo/eb:From/eb:PartyId`.

For One-Way/Pull, specify the external ID of the trading partner initiating the pull signal, as defined in the trading partner profile. The contents of this parameter map to the element `eb:Messaging/eb:UserMessage/eb:PartyInfo/eb:To/ eb:PartyId`.

- *type* External ID type of the initiating MSH, as defined in the trading partner profile.
- *role* Name of the role assumed by the initiating MSH (for example, Buyer).

For One-Way/Push, the contents of this parameter map to the element `eb:Messaging/eb:UserMessage/eb:PartyInfo/eb:From/eb:Role`.

For One-Way/Pull, the contents of this parameter map to the element `eb:Messaging/eb:UserMessage/eb:PartyInfo/eb:To/eb:Role`.

- *authorization* Optional. User credentials the pull signal receiver needs to authorize the pull signal. When the `Leg/security/pmodeAuthorize` parameter in the TPA is set to true, the MSH initiating the pull signal sends the user credentials with the pull signal. The responding MSH compares the username and password from the pull signal message with the username and password configured in the TPA for the initiator. If they do not match, the responding MSH returns a PModeAuthorization error. Specify:

username User name of the initiator.

password Password of the initiator.

- c *responder* Information that identifies the responder. Configure the following parameters:

- *id* External ID of the responding MSH, as defined in the trading partner profile.

For One-Way/Push, the contents of this parameter map to the element `eb:Messaging/eb:UserMessage/eb:PartyInfo/eb:To/eb:PartyId`.

For One-Way/Pull, the contents of this parameter map to the element `eb:Messaging/eb:UserMessage/eb:PartyInfo/eb:From/eb:PartyId`.

- *type* External ID type of the responding MSH, as defined in the trading partner profile.
- *role* Name of the role assumed by the responding MSH (for example, Seller).

For One-Way/Push, the contents of this parameter map to the element `eb:Messaging/eb:UserMessage/eb:PartyInfo/eb:To/eb:Role`.

For One-Way/Pull, the contents of this parameter map to the element `eb:Messaging/eb:UserMessage/eb:PartyInfo/eb:From/eb:Role`.

- 5 Add one or more legs by clicking **Add** or **Insert**.
- 6 Configure the following parameters:
 - a *label* Name of the leg(s) of the MEP to be implemented. Specify one of the following:
 - requestUM
The requestUM leg parameter is used to generate and process a user message, and generate any error or receipt response signal that references a user message. Configure requestUM when using One-Way/Push or One-Way/Pull.
 - requestSM
The requestSM leg parameter is used to generate and process a pull signal, and process any error response signal that references the pull signal. Configure requestSM when using One-Way/Pull.
 - b *protocol* Identifies the type of transport between two MSHs and information related to the MSHs. Configure the following parameter:
 - *address* The endpoint URL of the responding MSH.
When the responding MSH is Module for AS4, the format of the URL is
`http://host:port/ws/msh/receive`
where *host* is the responder's host and *port* is the responder's port.
 - c *businessInfo* Identifies message-pertinent information related to a pair of trading partners. Configure the following parameters:

<u>Parameter</u>	<u>Value</u>						
<i>service</i>	Maps to the element eb:Messaging/eb:UserMessage/eb:CollaborationInfo/eb:Service.						
<i>serviceType</i>	Maps to the element eb:Messaging/eb:UserMessage/eb:CollaborationInfo/eb:Service Type.						
<i>action</i>	Maps to the element eb:Messaging/eb:UserMessage/eb:CollaborationInfo/eb:Action.						
<i>properties</i>	Properties required in the message. If the required properties are missing, the processing of the message stops and an error is returned. Click Add or Insert and configure the following parameters: <table><thead><tr><th><u>Parameter</u></th><th><u>Value</u></th></tr></thead><tbody><tr><td><i>name</i></td><td>The name of the property.</td></tr><tr><td><i>description</i></td><td>The description of the property.</td></tr></tbody></table>	<u>Parameter</u>	<u>Value</u>	<i>name</i>	The name of the property.	<i>description</i>	The description of the property.
<u>Parameter</u>	<u>Value</u>						
<i>name</i>	The name of the property.						
<i>description</i>	The description of the property.						

Parameter	Value
	<p><i>required</i> Whether the property is required. Valid values are:</p> <ul style="list-style-type: none"> ■ <code>true</code>—Required. ■ <code>false</code>—Not required.
<i>mpc</i>	<p>Optional. Maps to the attribute <code>eb:Messaging/eb:UserMessage/@mpc</code> to indicate the MPC to which the user message is assigned. When you do not specify a value, the module uses the default MPC identified by http://docs.oasis-open.org/ebxml-msg/ebms/v3.0/ns/core/200704/defaultMPC.</p> <hr/> <p>Note: The MPC specified in the <code>requestUM</code> leg of the TPA parameter must be the same MPC that is specified in the <code>requestSM</code> leg. If they are different, the module returns a validation error and processing stops.</p>

7 After you configure the number of legs you require, click **Save and Close**.

Configuring Optional Features

Using My webMethods, you can configure TPAs to implement any or all of the module's optional features. The table below describes the options available and where to find more information about them.

When you want to...	Configure this parameter...	As described in...
Report errors	<i>legs/errorHandling</i>	“Configuring Error Handling” on page 34
Secure your AS4 message exchange	<i>legs/security</i>	“Configuring Security” on page 34
Confirm messages are delivered successfully	<i>legs/receptionAwareness</i>	“Configuring Reception Awareness” on page 39
Compress payloads	<i>payloadService/compressionType</i>	“Configuring Payload Compression” on page 41
Splitting and joining messaging	<i>splitting</i>	“Configuring Splitting and Joining ebMS Messages” on page 41

<u>When you want to...</u>	<u>Configure this parameter...</u>	<u>As described in...</u>
Employ multi-hop messaging	<i>legs/protocol</i>	“Configuring Multi-Hop Messaging” on page 43
Store large payloads on the hard disk drive instead of in memory	Not applicable	“Configuring Large Payload Handling” on page 44

Configuring Error Handling

When you want to report errors, configure the error handling TPA parameters in the requestUM leg for a user message and in the requestSM leg for a pull signal.

To configure error handling

- 1 In My webMethods: Applications > Administration > Integration > B2B > Trading Partner Agreements > Trading Partner Agreement Details.
- 2 Select the TPA for which you want to configure error handling.
- 3 In the TPA Data panel, configure the *errorHandling/report* parameters as follows:
 - a *senderErrorsTo* Address or comma-separated list of addresses to which to send the ebMS errors that are generated by the sending MSH.
 - b *receiverErrorsTo* Address or comma-separated list of addresses to which to send the ebMS errors that are generated by the receiving MSH.
 - c *asResponse* Whether processing errors at the receiver end are reported on the back channel of erroneous messages. Specify one of the following:
 - `true`—Errors are reported on the back channel. This is the default.
 - `false`—Errors are reported to the receiverErrorsTo address.

Configuring Security

To secure your AS4 message exchange, configure the security TPA parameters in the requestUM leg for a user message and in the requestSM leg for a pull signal.

To configure security

- 1 In My webMethods: Applications > Administration > Integration > B2B > Trading Partner Agreements > Trading Partner Agreement Details.
- 2 Select the TPA for which you want to configure security.
- 3 In the TPA Data panel, configure the *security* parameters as follows:

- a *enableSecurity* Whether signing or encrypting, or username token is enabled.
- `true`—Enabled.
 - `false`—Disabled. This is the default.
- b *keyStore* Information that identifies the repository of security keys. Configure the following parameters:
- *ISKeyStoreAlias* Integration Server keystore alias name. The IS keystore alias can be configured in Integration Server Administrator. For more information, see *webMethods Integration Server Administrator's Guide*.
 - *keyAlias* Key alias of the Enterprise.
 - *partnerAlias* Key alias of the trading partner.
- c *x509* Information required to sign and encrypt an AS4 message using the *WSS X.509 Certificate Token Profile*. Configure the following parameters:

Parameter	Value										
<i>sign</i>	Whether the message will be signed and which parts of the message will be signed. When you use your own policy file for security settings, the values of the <i>sign</i> parameters are ignored. Specify: <table border="1" data-bbox="613 1024 1406 1873"> <thead> <tr> <th>Parameter</th> <th>Value</th> </tr> </thead> <tbody> <tr> <td><i>enableSign</i></td> <td>Whether signing is enabled. Specify one of the following: <ul style="list-style-type: none"> ■ <code>true</code>—Enabled. ■ <code>false</code>—Disabled. This is the default. </td> </tr> <tr> <td><i>element</i></td> <td>The XPath of each element that needs to be signed. For example, to sign the Timestamp element, add <code>/soapenv:Envelope/soapenv:Header/eb:Messaging/eb:UserMessage/eb:MessageInfo/eb:Timestamp</code>. When no element is specified and <i>enableSign</i> is set to true, the message header and body are signed. Click Add or Insert to configure multiple element paths that need to be signed. Specify: <table border="1" data-bbox="847 1745 1406 1873"> <thead> <tr> <th>Parameter</th> <th>Value</th> </tr> </thead> <tbody> <tr> <td><i>element</i></td> <td>The path to the element that needs to be signed.</td> </tr> </tbody> </table> </td> </tr> </tbody> </table>	Parameter	Value	<i>enableSign</i>	Whether signing is enabled. Specify one of the following: <ul style="list-style-type: none"> ■ <code>true</code>—Enabled. ■ <code>false</code>—Disabled. This is the default. 	<i>element</i>	The XPath of each element that needs to be signed. For example, to sign the Timestamp element, add <code>/soapenv:Envelope/soapenv:Header/eb:Messaging/eb:UserMessage/eb:MessageInfo/eb:Timestamp</code> . When no element is specified and <i>enableSign</i> is set to true, the message header and body are signed. Click Add or Insert to configure multiple element paths that need to be signed. Specify: <table border="1" data-bbox="847 1745 1406 1873"> <thead> <tr> <th>Parameter</th> <th>Value</th> </tr> </thead> <tbody> <tr> <td><i>element</i></td> <td>The path to the element that needs to be signed.</td> </tr> </tbody> </table>	Parameter	Value	<i>element</i>	The path to the element that needs to be signed.
Parameter	Value										
<i>enableSign</i>	Whether signing is enabled. Specify one of the following: <ul style="list-style-type: none"> ■ <code>true</code>—Enabled. ■ <code>false</code>—Disabled. This is the default. 										
<i>element</i>	The XPath of each element that needs to be signed. For example, to sign the Timestamp element, add <code>/soapenv:Envelope/soapenv:Header/eb:Messaging/eb:UserMessage/eb:MessageInfo/eb:Timestamp</code> . When no element is specified and <i>enableSign</i> is set to true, the message header and body are signed. Click Add or Insert to configure multiple element paths that need to be signed. Specify: <table border="1" data-bbox="847 1745 1406 1873"> <thead> <tr> <th>Parameter</th> <th>Value</th> </tr> </thead> <tbody> <tr> <td><i>element</i></td> <td>The path to the element that needs to be signed.</td> </tr> </tbody> </table>	Parameter	Value	<i>element</i>	The path to the element that needs to be signed.						
Parameter	Value										
<i>element</i>	The path to the element that needs to be signed.										

Parameter	Value										
<i>attachments</i>	<p>Whether attachments are to be signed. Valid values are:</p> <ul style="list-style-type: none"> ■ <code>true</code>—All attachments are signed.(The <i>enableSign</i> parameter must also be set to <code>true</code>.) ■ <code>false</code>—All attachments are not signed. This is the default. 										
<i>encrypt</i>	<p>Whether the message will be encrypted and which parts of the message will be encrypted.</p> <hr/> <p>Note: When you use your own policy file for security settings, the values of the <i>encrypt</i> parameters are ignored.</p> <hr/> <table border="1"> <thead> <tr> <th>Parameter</th> <th>Value</th> </tr> </thead> <tbody> <tr> <td><i>enableEncrypt</i></td> <td> <p>Whether encryption is enabled. Specify one of the following:</p> <ul style="list-style-type: none"> ■ <code>true</code>—Enabled. ■ <code>false</code>—Disabled. This is the default. </td> </tr> <tr> <td><i>element</i></td> <td> <p>The XPath of each element that needs to be encrypted. For example, to encrypt the Timestamp element, add <code>/soapenv:Envelope/soapenv:Header/eb:Messaging/eb:UserMessage/eb:MessageInfo/eb:Timestamp</code>.</p> <p>When no element is specified and <i>enableEncrypt</i> is set to <code>true</code>, the entire body of the message is encrypted.</p> <p>Click Add and specify:</p> <table border="1"> <thead> <tr> <th>Parameter</th> <th>Value</th> </tr> </thead> <tbody> <tr> <td><i>element</i></td> <td> <p>Each element to be encrypted.</p> <p>Click Add or Insert to add elements to be encrypted.</p> </td> </tr> </tbody> </table> </td> </tr> </tbody> </table>	Parameter	Value	<i>enableEncrypt</i>	<p>Whether encryption is enabled. Specify one of the following:</p> <ul style="list-style-type: none"> ■ <code>true</code>—Enabled. ■ <code>false</code>—Disabled. This is the default. 	<i>element</i>	<p>The XPath of each element that needs to be encrypted. For example, to encrypt the Timestamp element, add <code>/soapenv:Envelope/soapenv:Header/eb:Messaging/eb:UserMessage/eb:MessageInfo/eb:Timestamp</code>.</p> <p>When no element is specified and <i>enableEncrypt</i> is set to <code>true</code>, the entire body of the message is encrypted.</p> <p>Click Add and specify:</p> <table border="1"> <thead> <tr> <th>Parameter</th> <th>Value</th> </tr> </thead> <tbody> <tr> <td><i>element</i></td> <td> <p>Each element to be encrypted.</p> <p>Click Add or Insert to add elements to be encrypted.</p> </td> </tr> </tbody> </table>	Parameter	Value	<i>element</i>	<p>Each element to be encrypted.</p> <p>Click Add or Insert to add elements to be encrypted.</p>
Parameter	Value										
<i>enableEncrypt</i>	<p>Whether encryption is enabled. Specify one of the following:</p> <ul style="list-style-type: none"> ■ <code>true</code>—Enabled. ■ <code>false</code>—Disabled. This is the default. 										
<i>element</i>	<p>The XPath of each element that needs to be encrypted. For example, to encrypt the Timestamp element, add <code>/soapenv:Envelope/soapenv:Header/eb:Messaging/eb:UserMessage/eb:MessageInfo/eb:Timestamp</code>.</p> <p>When no element is specified and <i>enableEncrypt</i> is set to <code>true</code>, the entire body of the message is encrypted.</p> <p>Click Add and specify:</p> <table border="1"> <thead> <tr> <th>Parameter</th> <th>Value</th> </tr> </thead> <tbody> <tr> <td><i>element</i></td> <td> <p>Each element to be encrypted.</p> <p>Click Add or Insert to add elements to be encrypted.</p> </td> </tr> </tbody> </table>	Parameter	Value	<i>element</i>	<p>Each element to be encrypted.</p> <p>Click Add or Insert to add elements to be encrypted.</p>						
Parameter	Value										
<i>element</i>	<p>Each element to be encrypted.</p> <p>Click Add or Insert to add elements to be encrypted.</p>										

Parameter	Value
	<p><i>attachments</i> Whether attachments will be encrypted. Valid values are:</p> <ul style="list-style-type: none"> ■ <code>true</code>—All attachments are encrypted. (The <i>enableEncrypt</i> parameter must also be set to true.) ■ <code>false</code>—All attachments are not encrypted. This is the default.
<i>algorithmSuite</i>	Specifies the algorithm suite to be used for signing and encrypting. For more information about algorithm suites, see “Using Algorithm Suites” on page 38 .
d <i>usernameToken</i>	Information needed to authenticate the AS4 message. Specify: <ul style="list-style-type: none"> ■ <i>username</i> User name to authenticate the message. ■ <i>password</i> Password to authenticate the message. ■ <i>hashpassword</i> Whether password hashing is enabled. Specify one of the following: <ul style="list-style-type: none"> <code>true</code>—Enabled. <code>false</code>—Disabled. This is the default.
e <i>policyFile</i>	Optional. Absolute path of the policy file. The policy file must adhere to the format specified in <i>OASIS WS-SecurityPolicy</i> .
f <i>pmodeAuthorize</i>	Whether to authorize the messages on the MEP leg for processing. Specify one of the following: <ul style="list-style-type: none"> ■ <code>true</code>—Messages are authorized for processing. ■ <code>false</code>—Messages are not authorized for processing. This is the default.

4 Click **Save** or **Save and Close**.

Note: When more than one TPA exists for a particular username, the password must be the same for all TPAs with that username.

Configuring Receipts

Follow this procedure to configure how you want Module for AS4 to handle receipts.

To configure receipts

- 1 In My webMethods: **Applications > Administration > Integration > B2B > Trading Partner Agreements > Trading Partner Agreement Details**.
- 2 Select the TPA for which you want to configure receipts.

3 Configure the *receipt* parameters as follows:

- *sendReceipt* Whether a receipt (Receipt ebMS signal) is sent. Specify one of the following:
 - `true`—Send a receipt.
 - `false`—Do not send a receipt. This is the default.
- *replyPattern* Specifies the reply pattern of the receipt signal. Specify one of the following:
 - `response`—The module sends the receipt on the back channel. This reply pattern can only be used with the One-Way/Push MEP. This is the default.
 - `callback`— The module sends the receipt signal as a separate request.
- *replyTo* Specifies the endpoint URL to which the receipt is sent. You must configure this parameter when *replyPattern* is set to `callback`.
- *nonRepudiation* Whether receipts are configured for Non-repudiation of Receipt (NRR). Specify one of the following:
 - `true`—Receipts are configured for NRR. The generated receipt includes `ds:Reference` elements that contain digests of the original message parts.
 - `false`—Receipts are configured for reception awareness. The generated receipt contains a copy of the user message or message fragment structure of the received AS4 message. This is the default.

Note: When the *sendReceipt* parameter is `false`, the *nonRepudiation* parameter is ignored.

4 Click **Save** or **Save and Close**.

Using Algorithm Suites

After installing Module for AS4, you can use the following algorithm suites:

Algorithm Suite Name	Signing Algorithm	Encryption Algorithm
Default	sha1	tripleDES
Basic128	sha1	aes128
TripleDes	sha1	tripleDES
Basic128Rsa15	sha1	aes128
TripleDesRsa15	sha1	tripleDES
Basic192Sha256	sha256	aes192
Basic128Sha256	sha256	aes128
TripleDesSha256	sha256	tripleDES

Algorithm Suite Name	Signing Algorithm	Encryption Algorithm
Basic128Sha256Rsa15	sha256	aes128
TripleDesSha256Rsa15	sha256	tripledes

You can also download and use the following algorithm suites:

Algorithm Suite Name	Signing Algorithm	Encryption Algorithm
Basic256	sha1	aes256
Basic192	sha1	aes192
Basic256Rsa15	sha1	aes256
Basic192Rsa15	sha1	aes192
Basic256Sha256	sha256	aes256
Basic192Sha256	sha256	aes192
Basic256Sha256Rsa15	sha256	aes256
Basic192Sha256Rsa15	sha256	aes192

To download these algorithm suites

- 1 Download the Java Cryptography Extension (JCE) Unlimited Strength Jurisdiction Files for your JVM version.
- 2 From the downloaded files, extract the `local_policy.jar` and `US_export_policy.jar` files.
- 3 Copy the `local_policy.jar` and `UX_export_policy.jar` files to the `Installation_directory/jvm/jvm_version/jre/lib/security` directory (or to the respective Java home directory).

Configuring Integration Server to Use SSL

Integration Server provides transport-level security of Module for AS4 message transactions through Secure Sockets Layer (SSL). You must configure Integration Server to use SSL on both the server and client sides. For more information, see *webMethods Integration Server Administrator's Guide*.

Configuring Reception Awareness

In reception awareness, an initiating MSH sends a user message to the responding MSH. If the responding MSH does not send a receipt within a specified time period, the initiating MSH retries sending the message. This continues until the receipt is received or the value specified in the `maxRetries` parameter is reached. The activity log in Trading Networks is updated with a message about each retry.

Configure Module for AS4 to retry sending messages by configuring the reception awareness TPA parameters in the requestUM leg.

To configure reception awareness

- 1 In My webMethods: Administration > Integration > B2B > Trading Partner Agreements > Trading Partner Agreement Details.
- 2 Select the TPA for which you want to configure reception awareness.
- 3 In the TPA Data panel, specify the *receptionAwareness* parameters as follows:
 - a *enabled* Whether reception awareness is enabled. Specify one of the following:
 - *true*—Enabled.
 - *false*—Disabled. This is the default.
 - b *retry* Parameters that control push retry.
 - *enabled* Whether you want to initiate push retry. Specify one of the following:
 - true*—Enabled.
 - false*—Disabled. This is the default.
 - *retryParameters* Information that controls push retry. Configure the following parameters:
 - maxRetries* Maximum number of times the module will try resending a message.
 - period* Length of time, in seconds, the module waits between retry attempts.
 - c *duplicateDetection* Detects a duplicate message, that is, a user message with the same *eb:UserMessage/eb:MessageInfo/eb:MessageId* as a previous message. When a duplicate message is received, the message is flagged as “duplicate” and *UserStatus* in the Trading Networks transaction analysis is updated to `DUPLICATE_RECEIVED`. Configure the following parameters:
 - *enabled* Whether duplicate detection is enabled. Specify one of the following:
 - true*—Enabled.
 - false*—Disabled. This is the default.
 - *checkWindow* Optional. Length of time, in seconds (S) or days (D), that a message ID is retained in the cache and checked for duplicate incoming message IDs (for example, 4320000S or 5D).
 - *maxSize* Optional. The maximum size, in bytes, of an incoming duplicate message that the module will save. When the size of the incoming duplicate message exceeds this value, the duplicate message is not saved in the Trading Networks database and an error is logged.
- 4 Click **Save** or **Save and Close**.

Note: Duplicate detection will start only after the *duplicateDetection* parameter is enabled in Trading Networks. All messages received before enabling *duplicateDetection* are not considered.

Configuring Payload Compression

Module for AS4 is capable of providing configurable compression and decompression of application payloads. AS4 messages that contain compressed or application payloads are built according to the SOAP with Attachments specification. Each compressed payload is carried in its own MIME body part.

When you want to send a compressed payload, set the `PMode.PayloadService.CompressionType` P-Mode parameter to `application/gzip`, as described below. Enabling this P-Mode parameter indicates to the sending MSH that the outgoing message payloads should be compressed before sending. Therefore, the receiving MSH must decompress the payload part before it delivers the message to the receiver.

Note: When the incoming message contains a compressed payload part(s), the receiving MSH decompresses the payload irrespective of the value of the TPA's `CompressionType` P-Mode parameter.

To configure the module to compress the payload of an AS4 message

- 1 In My webMethods: Administration > Integration > B2B > Trading Partner Agreements > Trading Partner Agreement Details.
- 2 Select the TPA for which you want to configure compression.
- 3 In the TPA data panel, configure the `payloadService > compressionType` parameter. Specify one of the following:
 - `none`—Payload compression is disabled. This is the default.
 - `application/gzip`—Payload compression is enabled.
- 4 Click OK.

Note: Payload compression is applied before applying splitting or signing and encrypting.

Configuring Splitting and Joining ebMS Messages

Message splitting and joining involves two related operations. During the Send operation of a large user message, the sending MSH splits the message into multiple fragments. Each fragment is wrapped in its own SOAP message with a `MessageFragment` header extension element and then sent to the receiving MSH in a separate thread from a thread

pool. The thread pool properties (that is, the `as4.throttling` properties) can be configured for optimal performance. For more information, see [“Configuring AS4 Configuration Properties” on page 45](#).

During the Receive operation, the presence of a `MessageFragment` header element indicates that the message content is part of a larger message. Once all the fragments have been received, they are reassembled and joined into a single message again.

The set of fragments that make up a user message belong to one group. Each group is assigned one of the following statuses:

<u>Value</u>	<u>Description</u>
ACTIVE	One or more fragments of the group was received and there are still more fragments to come.
COMPLETE	All fragments in the group were received.
EXPIRED	A group fragment was received after the time set for the <i>joinInterval</i> parameter elapsed.
REJECTED	There was a problem during processing of one of the fragments in the group.

When a user message is split and then separate fragments are sent, the TPA parameters for security and reception awareness apply at the fragment level, not the source message level. That is, the message fragments are individually secured. In addition, message acknowledgments, retries, and duplicate detection apply at the fragment level.

Note: Receipts cannot be generated for joined user messages.

Module for AS4 provides built-in services to manage fragment groups. For more information, see [“Built-In Services” on page 73](#).

To configure splitting and joining of ebMS messages

- 1 In My webMethods: Administration > Integration > B2B > Trading Partner Agreements > Trading Partner Agreement Details.
- 2 Select the TPA for which you want to configure splitting and joining.
- 3 In the TPA data panel, configure the *splitting* parameter as follows:

<u>Parameter</u>	<u>Value</u>
<i>enabled</i>	Optional. Whether or not splitting is enabled. Specify one of the following: <ul style="list-style-type: none">■ <code>true</code>—Enabled.■ <code>false</code>—Disabled. This is the default.

Parameter	Value
<i>fragmentSize</i>	The size of each fragment, in bytes. For example, if <i>fragmentSize</i> is defined as 1000 bytes and the message is 2050 bytes, the message is split into two fragments of 1000 bytes each, and one fragment of 50 bytes. If the message is 900 bytes, one fragment of 900 bytes is sent.
<i>joinInterval</i>	The maximum time, in seconds, to expect and process additional fragments after the first fragment is received.

Configuring Multi-Hop Messaging

Frequently, several organizations that exchange messages among themselves will use intermediaries (MSHs in this case) for message delivery. Messages flow through a multi-hop path, a connection of public or private networks and clouds. With intermediaries responsible for routing functions, the communicating parties can ignore message destination details.

Module for AS4 supports forwarding messages using both standard and custom routing functions.

When Module for AS4 acts as the sender or receiver endpoint, a TPA is required. When the module acts as an intermediary, a TPA is not required. Multi-hop configuration at the intermediary involves configuring a routing function only.

Configuring Multi-Hop Messaging at an Endpoint

A TPA must be configured for multi-hop messaging when Module for AS4 acts as the sender or receiver endpoint.

To configure multi-hop messaging for an endpoint

- 1 In My webMethods: Administration > Integration > B2B > Trading Partner Agreements > Trading Partner Agreement Details.
- 2 Select the TPA for which you want to configure multi-hop messaging.
- 3 In the TPA data panel, configure the *protocol* parameters as follows:

Parameter	Value
<i>address</i>	The endpoint address of the next MSH.

Parameter	Value
<i>addActorOrRoleAttribute</i>	<p>Specifies whether or not the role attribute with a value of <code>http://docs.oasis-open.org/ebxml-msg/ebms/v3.0/ns/part2/200811/nextmsh</code> will be added to the ebMS 3.0 messaging header of an outbound user message. Valid values are:</p> <ul style="list-style-type: none">■ <code>true</code>—The role attribute is added to the message header.■ <code>false</code>—The role attribute is not added to the message header.

Configuring Multi-Hop Messaging at an Intermediary

When Module for AS4 is the intermediary, only a routing function needs to be configured.

To configure multi-hop messaging at an intermediary

- 1 Open the *Integration Server_directory*\packages\WmAS4\config\config.cnf file in a text editor.
- 2 Configure the `as4.multihop.routingfunction` property.

For more information, see [“Configuring AS4 Configuration Properties” on page 45](#).

Configuring Large Payload Handling

When a large payload is sent and received as a MIME attachment, Module for AS4 can store the payload on the hard disk drive rather than keeping it in memory. This results in more efficient message processing.

To configure the module to handle large payloads

- 1 In the *Integration Server_directory*\packages\WmAS4\config\config.cnf file, configure the `as4.payload.large.enable` and the `as4.payload.large.threshold` properties. For more information, see [“Configuring AS4 Configuration Properties” on page 45](#).
- 2 In Integration Server Administrator, on the Settings > Extended screen, click Edit Extended Settings.
- 3 Specify values for the following Integration Server configuration parameters:
 - `watt.server.tspace.location`
 - `watt.server.tspace.max`
 - `watt.server.tspace.timeToLive`

For more information about defining Integration Server configuration properties, see *webMethods Integration Server Administrator's Guide*.

- 4 Click **Save Changes**.
- 5 Restart Integration Server.

Configuring AS4 Configuration Properties

Use the AS4 configuration properties to control some of the module functions.

To configure AS4 properties

- 1 Open the *Integration Server_directory\packages\WmAS4\config\config.cnf* file in a text editor.
- 2 Configure the following properties:

Property	Definition
as4.cacheTPAs	<p>Whether TPAs are cached. Valid values are:</p> <ul style="list-style-type: none"> ■ <code>true</code>—The module caches TPAs. ■ <code>false</code>—The module does not cache TPAs. This is the default. <p>Note: To improve performance in your production environment, Software AG recommends setting this property to <code>true</code>.</p>
as4.default.requestTimeout	<p>The amount of time, in milliseconds, the module waits for a response to an AS4 request. The default is 30000.</p>
as4.message.securityHeader.timeToLive	<p>The length of time, in seconds, that the ebMS message security header is valid. The default is 3600.</p>
as4.multihop.routingfunction	<p>The routing service Module for AS4 invokes to determine the address of the next MSH. When this property is not configured, the module invokes the default <code>wm.ip.estd.as4.util:routingFunction</code> service to determine this address.</p>

<u>Property</u>	<u>Definition</u>
<code>as4.nonprimary.httpPorts</code>	Comma-separated list of non-primary HTTP ports expecting AS4 messages. Configure this property on the receiver to allow incoming AS4 messages passage through non-primary HTTP ports of Integration Server.
<code>as4.nonprimary.httpsPorts</code>	Comma-separated list of non-primary HTTPS ports expecting AS4 messages. Configure this property on the receiver to allow incoming AS4 messages passage through non-primary HTTPS ports of Integration Server.
<code>as4.payload.large.enable</code>	Whether large payload handling is enabled. Valid values are: <ul style="list-style-type: none">■ <code>true</code>—Enabled.■ <code>false</code>—Disabled. This is the default. <hr/> <p>Note: A payload is considered large when its size is greater than the value specified in the <code>as4.payload.large.threshold</code> property.</p> <hr/>
<code>as4.payload.large.threshold</code>	The payload size in bytes over which a document is considered large. For example, if <code>as4.payload.threshold</code> is set to 1000000, the module considers any payload greater than 1,000,000 bytes as large. <hr/> <p>Note: This property should be configured to 16384 or greater. If no value is specified, or if the value configured is less than 16384, the module sets this property to 16384.</p> <hr/>

Property	Definition
as4.pmode.validation	<p>Whether TPA parameters are validated. Valid values are:</p> <ul style="list-style-type: none"> ■ <code>true</code>—The module validates a TPA before using it to send or process a user message or pull signal. This is the default. ■ <code>false</code>—The module does not validate a TPA before using it to send or process a user message or pull signal. <hr/> <p>Note: To improve performance in your production environment, Software AG recommends setting this property to <code>false</code> once you have finished configuring and verifying all TPA parameters.</p> <hr/>
as4.rg.http.url	<p>Comma-separated list of URLs of the Reverse HTTP Gateway Server. Configure this property if your Integration Server is configured to receive messages from external clients through a Reverse HTTP Gateway Server over HTTP. Use the values configured for Host and Port in Integration Server Administrator on the Security > Ports > View Internal Server Details screen.</p> <p>Use the following format:</p> <p><i>hostname:port</i></p> <p>where <i>hostname</i> is the IP address or the name of the machine, and <i>port</i> is the HTTP port number. For example, workstation4.webmethods.com:5555</p>

<u>Property</u>	<u>Definition</u>
<code>as4.rg.https.url</code>	<p>Comma-separated list of URLs of the Reverse HTTP Gateway Server. Configure this property if your Integration Server is configured to receive messages from external clients through a Reverse HTTP Gateway Server over HTTPS. Use the values configured for Host and Port in Integration Server Administrator on the Security > Ports > View Internal Server Details screen.</p> <p>Use the following format:</p> <p><i>hostname:port</i></p> <p>where <i>hostname</i> is the IP address or the name of the machine, and <i>port</i> is the HTTPS port number. For example, workstation5.webmethods.com:6666</p>
<code>as4.throttling.keepAliveTime</code>	<p>The maximum length of time an idle thread pool waits to receive a new task before terminating. The default is 100 seconds.</p>
<code>as4.throttling.maxThreadPoolCount</code>	<p>The maximum number of threads allowed in the thread pool. The default value is the number of processors available to the JVM.</p>
<code>as4.throttling.minThreadPoolCount</code>	<p>The minimum number of threads allowed in the thread pool, including idle threads. The default value is 1.</p>
<code>as4.throttling.queueSize</code>	<p>The size of the thread pool queue into which the tasks to be executed are submitted. The default is 20.</p>

3 Click Save.

4 Restart Integration Server.

5 Viewing Information About AS4 Transactions

■ Overview	50
■ Viewing AS4 Transactions	50

Overview

This chapter describes viewing AS4 transactions, as well as user statuses that Module for AS4 sets while processing transactions.

Viewing AS4 Transactions

You can view the following types of information about your AS4 transactions:

- Sender and receiver of the message
- Date and time the message was received in Trading Networks
- User status of the message
- Document type
- Related messages, for example, the receipt for a user message or fragment
- Processing status
- On the **Contents** tab, the following might be displayed based on the type of AS4 message being sent:
 - ebMS envelope or fragment envelope, which contains the message envelope
 - Secured ebMS message when security is enabled
 - Payload or fragment data
- On the **Activity Log** tab, the steps that the message goes through during inbound or outbound processing

For more information about viewing transactions, see *webMethods Trading Networks User's Guide*.

User Status and AS4 Messages

The following tables list the user statuses that the module sets while processing AS4 messages, along with their meanings. You can view this information in the Transactions panel of the Transactions page in My webMethods.

Status Values for User Messages at the Sending Side

User Status	Meaning
SUBMITTED	Using the submit service, a user message was submitted to the module for processing.
SENT	The user message was sent to the trading partner.
TOBE_FRAGMENTED	The user message was submitted to the split operation.

User Status	Meaning
FRAGMENTED	The user message was split into fragments successfully.
SEND_ERROR	An error occurred while sending the user message to the trading partner. If retry is enabled, the message transmission will be retried according to the settings defined in the TPA's <i>retry</i> parameter.
ERROR_RECEIVED	An error signal or SOAP fault was received from the trading partner. If retry is enabled, the message transmission will be retried according to the settings defined in the TPA's <i>retry</i> parameter.
WAIT FOR RECEIPT	The message was sent successfully and the module is waiting for the partner to send a receipt signal.
RECEIPT_RECEIVED	The receipt signal was received for the user message that was sent.
ATTEMPTS_EXHAUSTED	A receipt signal was not received. Retry is enabled and the retry attempts were exhausted.
RETRYING:n	A receipt signal was not received. Retry is enabled and the module has attempted to resend the message <i>n</i> number of times. For example, RETRYING:2 indicates that the module is retrying to send the message for the second time.
QUEUED	The message was submitted and it is queued in an MPC, waiting for a pull signal.

Status Values for Message Fragments at the Sending Side

User Status	Meaning
SUBMITTED	A message fragment was submitted to the module for sending.
SENT	The message fragment was sent to the trading partner.
SEND_ERROR	An error occurred while sending the message fragment to the trading partner. If retry is enabled, the message fragment transmission will be retried according to the settings defined in the TPA's <i>retry</i> parameter.
ERROR_RECEIVED	An error signal or SOAP fault was received from the trading partner. If retry is enabled, the message fragment transmission will be retried according to the settings defined in the TPA's <i>retry</i> parameter.
WAIT FOR RECEIPT	The message fragment was sent successfully and the module is waiting for the partner to send a receipt signal.

User Status	Meaning
RECEIPT_RECEIVED	The receipt signal was received for the message fragment that was sent.
ATTEMPTS_EXHAUSTED	The receipt signal was not received. Retry is enabled and the retry attempts were exhausted.
RETRYING:n	The receipt signal was not received. Retry is enabled and the module has attempted to resend the message fragment <i>n</i> number of times. For example, RETRYING:2 indicates that the module is retrying to send the message fragment for the second time.

Status Values for Pull Signals at the Sending Side

User Status	Meaning
SEND	The module received a request to send a pull signal, and the pull signal was sent to the trading partner.
SEND_ERROR	The pull signal could not be sent to the trading partner.
SENT	The pull signal was sent to the trading partner.
ERROR_RECEIVED	The trading partner responded to the pull signal with an error signal or a SOAP fault.

Status Values for User Messages at the Receiving Side

User Status	Meaning
RECEIVED	The user message was received and it will be processed next.
ROUTED	The user message was forwarded to the next MSH instead of being processed.
PROCESSED	The message was processed successfully.
MESSAGE_IN_ERROR	An error occurred during processing of the received message. Based on the configuration of the <i>errorHandling</i> parameters, either an error signal or a SOAP fault was returned to the message sender. For more information, see “Configuring Error Handling” on page 34 .
DUPLICATE_RECEIVED	Duplicate detection is enabled, and the message received was a duplicate.

Status Values for Message Fragments at the Receiving Side

User Status	Meaning
RECEIVED	A message fragment was received and is being processed.
PROCESSED	The message fragment was processed successfully.
MESSAGE_IN_ERROR	An error occurred while processing the received message fragment.

Status Values for Pull Signals at the Receiving Side

User Status	Meaning
RECEIVED	A pull signal was received and is being processed.
PROCESSED	The pull signal was processed successfully.
MESSAGE_IN_ERROR	An error occurred while processing the received pull signal.

6 Logging and Error Handling

■ Overview	56
■ Error Message Logging	56
■ Error Codes	56

Overview

Module for AS4 supports the following error handling capabilities for all MEPs:

- The responding MSH is able to report errors to the initiating MSH as either an ebMS error message or as a SOAP fault
- Errors can be sent on the back channel of the underlying transport protocol
- Errors can be reported to a third-party address

A list of error codes and supporting information appears at the end of this chapter.

Error Message Logging

The module uses the Integration Server logging mechanism to log messages. To view the server log, use Integration Server Administrator. For more information about viewing the server log, see *webMethods Integration Server Administrator's Guide*.

The module adds Error, Warn, Info, and Debug messages to the server log, using the format *AS4.000n.nnnn*, where:

- *AS4* is the product code that indicates the message is issued by the module.
- *000n* is the major error code, where *n* can be any of the following values:
 - 0—The module encountered a general error.
 - 1—The module encountered an error while receiving an AS4 message.
 - 2—The module encountered an error while sending an AS4 message.
- *nnnn* is the minor error code.

Error Codes

0000.3005 Error relating bizdoc with Document ID {0} to bizdoc with Document ID {1} as {2}.

Explanation: An error occurred while retrieving the user message related to the receipt or error signal from Trading Networks.

Action: See the error message for details and take appropriate action to resolve the problem.

0000.3004 Error updating Processing Status to {0} and User Status to {1} for bizdoc with Document ID {2} and Internal ID {3}. Error message: {4}.

Explanation: Error updating Processing Status and User Status for a message document in Trading Networks.

Action: See the error message for details and take appropriate action to resolve the problem.

0000.3003 Error retrieving partnerId from Trading Networks for External Id Value {0}, Type {1}. Error message: {2}.

Explanation: An error occurred while retrieving the partnerId parameter from Trading Networks.

Action: Ensure the partner profile in Trading Networks is configured correctly.

0000.3002 Error while saving bizdoc for message with Message Id {0} in Trading Networks. Error message: {1}.

Explanation: An error occurred while saving the message in Trading Networks.

Action: See the error message for details and take appropriate action to resolve the problem.

0000.3001 Validation error for TPA with AgreementID {0}: The mandatory keystore parameters required for Security are not set in the partner TPA.Details: {1}

Explanation: One of the security parameters specified in the error message is not configured in the TPA.

Action: Configure the mandatory security parameters in the TPA and try again.

0000.3000 Error occurred during startup of WmAS4 package. Error message: {0}.

Explanation: An error occurred while starting the WmAS4 package.

Action: See the error message for details, fix the reported issue, and restart Integration Server.

0000.0006 The message partition channel {0} is empty.

Explanation: A pull request was received for the specified MPC but this MPC contains no messages.

Action: Ensure that there are messages in the specified MPC.

0000.0103 Message with Messageld {0} does not comply with the security parameters configured in the TPA. Error message: {1}.

Explanation: The processor determined that the message's security methods, parameters, scope or other security policy-level requirements or agreements were not satisfied.

Action: Ensure the security parameters in the partner TPA are configured correctly.

0000.0102 Decryption failed for message with Messageld {0}. Error message: {1}.

Explanation: The security module could not decrypt the encrypted data reference that the security header intended for the SOAP actor.

Action: Confirm that the private key configured for the Enterprise in the Integration Server keystore is correct.

0000.0101 Signature verification failed for message with Messageld {0}. Error message: {1}.

Explanation: The security module could not validate the signature in the security header that was intended for the SOAP actor.

Action: Ensure the public certificates configured for the trading partner in the Integration Server keystore are correct.

0000.3042 Validation error for TPA with AgreementID {0}: If security needs to be enabled, one of the following parameters needs to be set in the TPA: policy file, userNameToken, sign, or encrypt.

Explanation: Security is enabled but the required security parameters are not configured in the TPA.

Action: Configure at least one of the parameters specified in the error message.

0000.3008 Internal error. Error processing input \n {0}.

Explanation: An internal error occurred.

Action: Contact Software AG Global Support.

0000.3009 Error retrieving TPA for senderID {0} receiverID {1} agreementID {2} from Trading Networks. Error message: {3}.

Explanation: An error occurred while retrieving the TPA from Trading Networks.

Action: See the error message for details and take appropriate action to resolve the problem.

0000.3011 Error retrieving bizdoc with Internal ID {0} from Trading Networks. Error message: {1}.

Explanation: An error occurred while retrieving the bizdoc from Trading Networks.

Action: See the error message for details and take appropriate action to resolve the problem.

0000.3012 Error retrieving bizdoc with Document ID {0} from Trading Networks. Error message: {1}.

Explanation: An error occurred while retrieving the bizdoc from Trading Networks.

Action: See the error message for details and take appropriate action to resolve the problem.

0000.3013 Error retrieving content part {0} from bizdoc with Internal ID {1} from Trading Networks. Error message: {2}.

Explanation: An error occurred while retrieving content part from Trading Networks.

Action: See the error message for details and take appropriate action to resolve the problem.

0000.3014 Error retrieving message with MessageId {0} referenced by {1} {2} from Trading Networks. Error message: {2}.

Explanation: An error occurred while retrieving the message from Trading Networks.

Action: See the error message for details and take appropriate action to resolve the problem.

0000.3015 Error persisting message {0} in Trading Networks. Error message: {1}.

Explanation: An error occurred while persisting the message in Trading Networks.

Action: See the error message for details and take appropriate action to resolve the problem.

0000.3017 Error while retrieving leg with label {0} from TPA with AgreementID {1} for service {2} and action {3}.

Explanation: An error occurred while retrieving the specified leg from the designated TPA.

Action: Ensure that the leg specified in the message is configured in the designated TPA.

0000.3020 Error while retrieving TPAs. Error message: {0}.

Explanation: An error occurred while retrieving the module's TPAs from Trading Networks.

Action: See the error message for details and take appropriate action to resolve the problem.

0000.3021 Error retrieving TPA for mpc {0} and Agreement ID {1} from Trading Networks.

Explanation: The module was unable to retrieve the TPA while generating or processing a pull signal.

Action: Ensure at least one TPA is configured in Trading Networks with the Message Partition Channel specified in the message.

0000.3022 Authorization information for {0} is not configured for the TPA with AgreementID {1}.

Explanation: An error occurred while retrieving authorization information for the initiator or responder from the TPA with the agreement ID specified in the error message.

Action: Ensure that the required authorization information is configured in the TPA.

0000.3023 Error while retrieving content for the MIME attachment referenced by Content-ID {0}. Error message: {1}.

Explanation: An error occurred while retrieving the content for the MIME attachment.

Action: For a generated user message, ensure the partInfo and partContent parameters of the submit service are valid. For a received user message, consult with the trading partner who sent the message to resolve the error.

0000.3024 Error retrieving content from the SOAP Body referenced by id {0}. Error message: {1}.

Explanation: An error occurred while retrieving the payload content from the SOAP body.

Action: For a generated user message, ensure the partInfo and partContent parameters of the submit service are valid. For a received user message, consult with the trading partner who sent the message to resolve the error.

0000.3025 Error while retrieving content for the external resource referenced by the URL {0}. Error message: {1}.

Explanation: An error occurred while retrieving payload content from the URL.

Action: For a generated user message, ensure the partInfo and partContent parameters of the submit service are valid. For a received user message, consult with the trading partner who sent the message to resolve the error.

0000.3028 Validation error for TPA with AgreementID {0}. Parameter {1} is not configured.

Explanation: In the specified TPA, a required parameter has not been configured.

Action: In the specified TPA, configure the required parameter.

0000.3029 Validation error for TPA with AgreementID {0}. Leg with label {1} is not configured.

Explanation: The specified leg is not configured in the TPA.

Action: In the TPA, configure the leg specified in the message.

0000.3030 Validation error for TPA with AgreementID {0}. Parameter {1} is not configured in leg with label {2}.

Explanation: In the designated TPA, a mandatory leg parameter is not configured for the leg specified.

Action: In the TPA, configure the leg parameter specified in the message.

0000.3031 Validation error for TPA with AgreementID {0}. Parameter protocol/address within leg with label {1} is an invalid URL.

Explanation: In the designated TPA, the protocol/address value is not configured with a valid URL for the leg specified.

Action: In the TPA, configure the protocol/address parameter as a valid URL for the leg specified.

0000.3032 Validation warning for TPA with AgreementID {0}. Parameter businessInfo/service within leg {1} must be configured as a URI.

Explanation: In the specified TPA leg, the businessInfo/serviceType parameter is not configured and the businessInfo/service parameter is not configured as a URI.

Action: In the specified TPA leg, ensure that either the businessInfo/serviceType parameter is configured or the businessInfo/service is configured with a valid URI.

0000.3033 Validation error for TPA with AgreementID {0}. Parameter businessInfo/service within leg {1} must be configured with the value "http://docs.oasis-open.org/ebxml-msg/ebms/v3.0/ns/core/200704/service".

Explanation: In the specified TPA leg, the businessInfo/action parameter is configured with the value "http://docs.oasis-open.org/ebxml-msg/ebms/v3.0/ns/core/200704/test", but the businessInfo/service parameter is not configured as "http://docs.oasis-open.org/ebxml-msg/ebms/v3.0/ns/core/200704/service" as required.

Action: In the specified TPA leg, ensure that the values of the businessInfo/action parameter and the businessInfo/service parameter are consistent with the ebMS version 3.0 specification.

0000.3034 Internal Error: Error during initialization of logger, JournalLog Handler could not be retrieved.

Explanation: Logger initialization failed.

Action: Contact Software AG Global Support.

0000.3035 Error loading AS4 config file "packages/WmAS4/config/config.cnf". Error message: {0}.

Explanation: There was an error loading the config.cnf file.

Action: Ensure the config.cnf file is at the specified location. If it is not present, contact Software AG Global Support.

0000.3036 Failed to retrieve TPA for fromPartyId {0}, fromPartyIdType {1}, toPartyId {2}, toPartyIdType {3}, and pmodelId {4}. Error message: {5}.

Explanation: The TPA for the specified parameters could not be retrieved.

Action: See the error message for details and take appropriate action to resolve the problem.

0000.3037 Error while loading policy file {0}.

Explanation: The specified policy file, which is used for security purposes, could not be loaded.

Action: Ensure that the content of the policy file has the correct syntax.

0000.3038 Error retrieving message for RefToMessageId {0} from Trading Networks. Error message: {1}.

Explanation: An error occurred while retrieving the user message from Trading Networks.

Action: See the error message for details and take appropriate action to resolve the problem.

0000.3039 Error while processing the {0} message with messageId {1}. Error message: {2}.

Explanation: An error occurred while retrieving the TPA for the specified message.

Action: See the error message for details and take appropriate action to resolve the problem.

0000.3040 P-Mode authorization for pull signal failed for the mpc {0}. The authorization parameters do not match.

Explanation: P-Mode authorization failed because the authorization check failed.

Action: In the TPA, ensure the Initiator username and password are configured correctly.

0000.3041 P-Mode authorization for pull signal failed. The input message has PMode authorization parameters, but the PMode authorization in the TPA is disabled.

Explanation: The input message contains P-Mode authorization parameters, but P-Mode authorization in the TPA is disabled.

Action: In the TPA, set the security/pmodeAuthorize parameter to true to enable P-Mode authorization.

0000.3058 Validation error for TPA with AgreementID {0}. Parameter errorHandling/report/asResponse within leg must be set to false to enable splitting.

Explanation: The errorHandling/report/asResponse parameter within the leg is not set to false as required to enable splitting.

Action: Set errorHandling/report/asResponse to false and configure errorHandling/report in the leg.

0000.3059 Validation error for TPA with AgreementID {0}. Parameter pmode/splitting/fragmentSize should be greater than zero

Explanation: Parameter pmode/splitting/fragmentSize is not greater than zero.

Action: Set the value of fragmentSize to a positive, non-zero integer.

0000.3060 Validation error for TPA with AgreementID {0}. Parameter security/receipt/replyPattern within leg with leg requestUM must be configured to callback for splitting

Explanation: The security/receipt/replyPattern parameter within the requestUM leg is not configured to callback for splitting.

Action: Within the requestUM leg, configure security/receipt/replyPattern as callback and configure security/receipt/replyTo with the address to which the receipt should be sent.

0000.3043 Error while processing the security for the message. Error message {0}.

Explanation: An error occurred while processing the security of the message.

Action: See the error message for details and take appropriate action to resolve the problem.

0000.3045 Error while setting the algorithm suite for security. Error message {0}.

Explanation: An error occurred while configuring the security parameters.

Action: See the error message for details and take appropriate action to resolve the problem.

0000.3044 Error while retrieving the Integration Server keystore details for keystore alias {0} and key alias {1}.

Explanation: An error occurred while retrieving the Integration Server keystore details.

Action: Ensure the specified ISKeystoreAlias and keyAlias parameters are configured correctly in Integration Server.

0000.3049 Error updating UserStatus of bizdoc with Internal ID {0} to {1}. Error Message: {2}.

Explanation: An error occurred while updating the user status of the bizdoc.

Action: See the error message for details and take appropriate action to resolve the problem.

0000.3051 Error adding content for {0} to SOAP Body. Error message: {1}.

Explanation: An error occurred while adding an input payload to the SOAP Body.

Action: Ensure that the payload has XML-structured content.

0000.3052 The partInfo input parameter is not configured for partContent [{0}]. The specified partContent will not be added as a payload part in the outbound ebMS message.

Explanation: There is no value for the partInfo input parameter, which acts as metadata for the partContent parameter. The module cannot resolve the location for partContent, so partContent is ignored and omitted from the message.

Action: Provide a value for the partInfo parameter for the partContent specified in the warning message.

0000.3027 Validation warning for TPA with AgreementID {0}. Parameter {1} is not configured in leg with label {2}.

Explanation: Validation of the TPA identified by the AgreementID has failed for reasons specified by the error message.

Action: See the error message and rectify the TPA accordingly.

0000.3053 Validation error for TPA with AgreementID {0}. Parameter errorHandling/report/receiverErrorsTo must be configured in leg with label requestUM, when the errorHandling/report/asResponse parameter is configured as false.

Explanation: The errorHandling/report/asResponse parameter is configured as false (that is, errors are be reported on the back channel); however, the address to which errors should be reported is not configured in the requestUM leg.

Action: In the requestUM leg, configure the errorHandling/report/receiverErrorsTo parameter to indicate the address to which errors should be reported.

0000.3054 Validation error for TPA with AgreementID {0}. Parameter errorHandling/report/receiverErrorsTo within leg with label requestUM contains an invalid URL.

Explanation: The errorHandling/report/receiverErrorsTo parameter within the leg with label {1} contains an invalid URL.

Action: Ensure that the errorHandling/report/receiverErrorsTo parameter within the requestUM leg in the TPA specified by the error message contains a list of comma separated valid URLs.

0000.3055 Validation error for TPA with AgreementID {0}. Parameter security/receipt/replyTo must be configured in leg with label requestUM, when the security/receipt/sendReceipt is configured as true and the security/receipt/replyPattern parameter is configured as callback.

Explanation: The security/receipt/sendReceipt is configured as true and the security/receipt/replyPattern parameter is configured as callback, but the security/receipt/replyTo parameter in the requestUM leg is not configured.

Action: Configure the security/receipt/replyTo parameter in the requestUM leg for the TPA specified by the error message.

0000.3056 Validation error for TPA with AgreementID {0}. Parameter security/receipt/replyTo within leg with label requestUM contains an invalid URL.

Explanation: The security/receipt/replyTo parameter within the requestUM leg contains an invalid URL.

Action: Configure the security/receipt/replyTo parameter within the requestUM leg of the TPA specified by the error as a valid URL.

0000.3057 Validation error for TPA with AgreementID {0}. Parameter security/receipt/replyPattern within leg with label requestUM must be configured to callback for One-Way/Pull

Explanation: The security/receipt/replyPattern parameter in the requestUM leg is not configured as callback, as required for the One-Way/Pull MEP.

Action: Configure the security/receipt/replyPattern parameter as callback.

0000.3066 There is no requestUM leg with mpc {0}. The mpc name configured in the requestSM leg and requestUM leg should be same

Explanation: The mpc configured in the requestSM leg of the TPA does not match the mpc configured in the request UM leg of the TPA.

Action: Edit the TPA so that the value of BusinessInfo/mpc in the requestSM leg and the value of BusinessInfo/mpc in requestUM leg are the same.

0000.3067 TPA configuration Error. Password should not be null or empty for the username {0}.

Explanation: The username is set but the password is null or empty.

Action: Set the password parameter to a non-empty value.

0000.3074 as4.payload.large.threshold is configured as {0}. The property must be configured to a value greater than 16KB. The module will use a threshold value of 16KB instead.

Explanation: The as4.payload.threshold property is less than 16KB.

Action: Configure the as4.payload.threshold property to greater than 16KB.

0001.3000 An error occurred while generating Receipt for the received UserMessage which has messageld {0}. Error message {1}.

Explanation: An error occurred while generating the receipt for the received user message.

Action: See the error message for details and take appropriate action to resolve the problem.

0001.3001 Error while processing the received message with messageType {0}, messageld {1}. Error message: {2}.

Explanation: An error occurred while processing the received message.

Action: See the error message for details and take appropriate action to resolve the problem.

0001.3002 Non-Repudiation check for received Receipt with messageId {0} failed. URI {1} in the UserMessage with messageId {2} does not have a match.

Explanation: The non-repudiation check failed.

Action: Consult with the trading partner to ensure the partner sent the correct non-repudiation information.

0001.3004 Received a duplicate message with messageId {1}.

Explanation: A duplicate message was detected.

Action: Notify the trading partner that the message sent was a duplicate.

0001.3005 Invalid ebMS Header error. Error Message: The Messaging element must contain at least one of the child elements UserMessage or SignalMessage.

Explanation: The inbound message's ebMS message header does not contain a UserMessage or SignalMessage element.

Action: Notify the partner that the message header was incomplete.

0001.3006 Invalid ebMS Header error. Error message: The SignalMessage element must contain at least one of the child elements PullRequest or Error or Receipt.

Explanation: The SignalMessage element of the inbound message does not contain at least one of these elements: PullRequest, Error, or Receipt.

Action: Notify the trading partner that a message with an invalid SignalMessage element was received.

0001.3007 EBMS processing error. Error Message: Either the UserMessage/PartyInfo element is missing from the ebMS header or the element is encrypted.

Explanation: The module is unable to retrieve the UserMessage/PartyInfo element from the inbound message's ebMS header.

Action: Notify the message sender.

0001.3008 EBMS processing error. Error Message: Either the UserMessage/PartyInfo/From element is missing from the ebMS header or the element is encrypted.

Explanation: The module is unable to retrieve the UserMessage/PartyInfo/From element from the inbound message's ebMS header.

Action: Notify the message sender.

0001.3009 EBMS processing error. Error Message: Either the UserMessage/PartyInfo/From/PartyId element is missing from the ebMS header or the element is encrypted.

Explanation: The module is unable to retrieve the From/PartyId element from the inbound message's ebMS header.

Action: Notify the message sender.

0001.3010 Inconsistent value error. Error Message: The UserMessage/PartyInfo/From/PartyId element cannot be empty.

Explanation: The module is unable to retrieve a value from the PartyId element of the inbound message's ebMS header.

Action: Notify the message sender.

0001.3011 EBMS processing error. Error Message: Either the UserMessage/PartyInfo/To element is missing from the ebMS header or the element is encrypted.

Explanation: The module is unable to retrieve the UserMessage/PartyInfo/To element from the inbound message's ebMS header.

Action: Notify the message sender.

0001.3012 EBMS processing error. Error Message: Either the UserMessage/PartyInfo/To/PartyId element is missing from the ebMS header or the element is encrypted.

Explanation: The module is unable to retrieve the To/PartyId element from the inbound message's ebMS header.

Action: Notify the message sender.

0001.3013 Inconsistent value error. Error Message: The UserMessage/PartyInfo/From/PartyId element cannot be empty.

Explanation: The module is unable to retrieve a value from the From/PartyId element from the inbound message's ebMS header.

Action: Notify the message sender.

0001.3014 EBMS processing error. Error Message: The UserMessage/CollaborationInfo/AgreementRef element is required by the module to identify the agreement for processing an inbound message.

Explanation: The UserMessage/CollaborationInfo/AgreementRef element is missing.

Action: Notify the message sender.

0001.3015 EBMS processing error. Error Message: The UserMessage/CollaborationInfo/AgreementRef value is required by the module to identify the agreement for processing an inbound message.

Explanation: The UserMessage/CollaborationInfo/AgreementRef value is missing.

Action: Notify the message sender.

0001.3016 Feature not supported error. Error Message: Processing of Bundled messages is not currently supported.

Explanation: Processing of bundled messages is not supported currently.

Action: Contact Software AG Global Support for any inquiries regarding support of this feature.

0001.3018 Invalid ebMS Header error. Error Message: {0}.

Explanation: Validation of the ebMS header has failed due to the reason specified in the error message.

Action: Notify the message sender.

0001.3019 EBMS validation error. Error Message: {0}.

Explanation: The EBMS header validation process failed for reasons other than an invalid header.

Action: Report the problem described in the error message to Software AG Global Support.

0001.3020 Inconsistent value error: Error Message: The content of the From/PartyId element MUST be a URI if the PartyId/@type attribute is not present.

Explanation: The content of the PartyId element is not a valid URI as defined in the specification.

Action: Notify the message sender that the PartyId element does not conform to ebMS specification.

0001.3021 Inconsistent value error: Error Message: The content of the To/PartyId element MUST be a URI if the PartyId/@type attribute is not present.

Explanation: The content of the PartyId element is not a valid URI as defined in the specification.

Action: Notify the message sender that the PartyId element does not conform to ebMS specification.

0001.3022 Inconsistent value error: Error Message: The content of the AgreementRef element MUST be a URI if the AgreementRef/@type attribute is not present.

Explanation: The content of the AgreementRef element is not a valid URI as defined in the specification.

Action: Notify the message sender that the AgreementRef element does not conform to ebMS specification.

0001.3023 Inconsistent value error: Error Message: The content of the Service element MUST be a URI if the Service/@type attribute is not present.

Explanation: The content of the Service element is not a valid URI as defined in the specification.

Action: Notify the message sender that the Service element does not conform to ebMS specification.

0001.3025 EBMS processing warning. Warning Message: Either the From/PartyId/@type attribute is not present or attribute is empty.

Explanation: The module is unable to extract the From/PartyId/@type attribute value from the ebMS header of the inbound message.

Action: Notify the message sender to set the From/PartyId/@type attribute with the appropriate value.

0001.3026 EBMS processing warning. Warning Message: Either the To/PartyId/@type attribute is not present or attribute is empty.

Explanation: The module is unable to extract the To/PartyId/@type attribute value from the ebMS header of the inbound message.

Action: Notify the message sender to set the From/PartyId/@type attribute with the appropriate value.

0001.3027 Incoming Message does not comply with the security parameters configured in the TPA. Error message: {0}.

Explanation: The content of the element specified in the incoming message is not compatible with the expected content based on the associated TPA.

Action: Notify the message sender.

0001.3028 Processing mode mismatch error. Error Message: The expected content of the element {0} is {1}, the actual content is {2}.

Explanation: The content of the element specified in the error message is not compatible with the expected content based on the associated TPA.

Action: Notify the message sender.

0001.3029 Processing mode mismatch error. Error Message: The Messaging/eb:UserMessage/eb:MessageProperties element is expected with the required properties {0}.

Explanation: The content of the element specified in the error message is not compatible with the expected content based on the associated TPA.

Action: Notify the message sender.

0001.3030 Processing mode mismatch error. Error Message: The Messaging/eb:UserMessage/eb:MessageProperties element is expected to contain the required property {0}.

Explanation: The content of the element specified in the error message is not compatible with the expected content based on the associated TPA.

Action: Notify the message sender.

0001.3031 Security processing warning. Warning Message: Skipping security processing for the message of type {0} with messageld {1} as the TPA leg is not available.

Explanation: The module cannot process the received message's security headers because it can't retrieve a TPA leg to process the received Error or Receipt signal. If the SignalMessage/MessageInfo/RefToMessageId element is present, however, the module continued to process the message.

Action: Check the error logs to see if there was an error resolving the TPA or retrieving a TPA leg.

0001.3033 EBMS processing error. Error Message:The UserMessage/CollaborationInfo/Service element is missing or encrypted.

Explanation: The UserMessage/CollaborationInfo/Service element is missing or encrypted.

Action: Notify the message sender.

0001.3034 EBMS processing error. Error Message:The UserMessage/CollaborationInfo/Service value is missing.

Explanation: The UserMessage/CollaborationInfo/Service value is missing.

Action: Notify the message sender.

0001.3035 EBMS processing error. Error Message:The UserMessage/CollaborationInfo/Action element is missing or encrypted.

Explanation: The UserMessage/CollaborationInfo/Action element is missing or encrypted.

Action: Notify the message sender.

0001.3036 EBMS processing error. Error Message:The UserMessage/CollaborationInfo/Action value is missing.

Explanation: The UserMessage/CollaborationInfo/Action value is missing.

Action: Notify the message sender.

0001.3037 No ebMS Error generated for the message in error {0}.

Explanation: A message was received in error but the module did not generate an ebMS error.

Action: None.

0001.3038 Unable to retrieve errorHandler parameters for the message in error {0}. Error message: the TPA leg is not available.

Explanation: The module was unable to retrieve the TPA leg for the message in error, so it cannot report the generated ebMS error.

Action: None.

0001.3039 Error while decompressing the received payload part {0}, Error message: {1}

Explanation: Decompressing the payload failed.

Action: Ensure the incoming payload is formatted correctly, is compressed, and is not corrupted.

0001.3040 The received fragment with groupID {0} has the MessageSize set. MessageSize has already been received by a previous fragment of this group. Rejecting this fragment group.

Explanation: The fragment group is rejected. More than one fragment in the group has MessageSize configured.

Action: Consult with the trading partner to ensure that only one fragment in the group has MessageSize configured.

0001.3041 The received fragment with groupID {0} has the FragmentCount set. FragmentCount has already been received by a previous fragment of this group. Rejecting this fragment group.

Explanation: The fragment group is rejected. More than one fragment in the group has the FragmentCount parameter configured.

Action: Consult with the trading partner to ensure that only one fragment in the group has FragmentCount configured.

0001.3042 The received fragment with groupID {0} has the MessageHeader set. MessageHeader has already been received by a previous fragment of this group. Rejecting this fragment group.

Explanation: The fragment group is rejected. More than one fragment has MessageHeader configured.

Action: Consult with the trading partner to ensure that only one fragment in the group has MessageHeader configured.

0001.3043 The received fragment with groupID {0} has the Action parameter set. Action parameter has already been received by a previous fragment of this group. Rejecting this fragment group.

Explanation: The fragment group is rejected. More than one fragment in the group has the Action parameter configured.

Action: Consult with the trading partner to ensure that only one fragment in the group has the Action parameter configured.

0001.3044 The received fragment with groupID {0} has the CompressionInfo parameter set. CompressionInfo parameter has already been received by a previous fragment of this group. Rejecting this fragment group.

Explanation: The fragment group is rejected. More than one fragment in the group has CompressionInfo configured.

Action: Consult with the trading partner to ensure that only one fragment in the group has CompressionInfo configured.

0001.3045 The fragment received is a duplicate fragment. A fragment with the same messageID is received before.

Explanation: The fragment group is rejected. The group contains duplicate fragments.

Action: Notify the trading partner that duplicate fragments were received.

0001.3046 The received fragment with groupID {0} has the FragmentNum value greater than the FragmentCount. Rejecting this fragment group.

Explanation: The fragment group is rejected. At least one of the fragments received has a FragmentNum value that exceeds the value of FragmentCount.

Action: Consult with the trading partner to ensure that the FragmentNum value for all fragments is not greater than the FragmentCount.

0001.3047 The received fragment with groupID {0} has the FragmentCount value which is lesser than the FragmentCount received by a previous fragment. Rejecting this fragment group.

Explanation: The fragment group is rejected. The value of FragmentCount for this fragment is less than the value of FragmentCount for a fragment received previously.

Action: Consult with the trading partner to ensure the correct FragmentCount values were sent.

0001.3048 The received fragment belongs to the group {0}. This is a rejected group. The fragment is rejected.

Explanation: The fragment is rejected. It belongs to a rejected group.

Action: Consult with the trading partner and take appropriate action.

0001.3049 The received fragment belongs to the group {0}. This is a completed group. The fragment is rejected.

Explanation: The fragment is rejected. It belongs to a completed group.

Action: Consult with the trading partner and take appropriate action.

0001.3050 The received fragment belongs to the group {0}. The JoinInterval time has expired. All the fragments of this group will be rejected.

Explanation: The fragment is rejected. It belongs to an expired group.

Action: Consult with the trading partner and take appropriate action.

0002.3001 The wm.ip.estd.as4.msh:submit service failed to process the input pipeline {0}. Error message {1}.

Explanation: The submit service failed to send the message.

Action: See the error message for details and take appropriate action to resolve the problem.

0002.3003 Error while processing the retry parameters. The module will continue as though retry parameters are not set. Error message: {0}.

Explanation: The retry parameters specified are invalid. The module will continue as though no retry parameters are set.

Action: See the error message for details and take appropriate action to resolve the problem.

0002.3011 There was an error while processing the content for payload {0}. Error message: {1}

Explanation: When executing the wm.ip.estd.as4.msh:submit service, processing part of the content provided in the partContent input parameter failed.

Action: See the error message for details and take appropriate action. Also, verify the partContent mapping.

0002.3012 There was an error while large payload handling for the payload {0}. Error message: {1}

Explanation: Handling the large payload failed.

Action: See the error message for details and take appropriate action.

0002.3013 Unsupported content format for payload {0}. The module provides support for payload content as stream only

Explanation: The wm.ip.estd.as4.msh:submit service failed because part of the content provided in the partContent input parameter is not formatted correctly.

Action: Ensure that the content provided in the partContent input parameter is a stream.

0002.3017 {0} is a required input field. Specify a value for this field

Explanation: No value is set for the mandatory field specified in the error message.

Action: Define a value for the field specified in the error message.

0002.3018 One or more of the entries of partContent input passed to the 'submit' service is null

Explanation: One or more of the entries of the partContent parameter is missing input for the partInfo parameter.

Action: Ensure that input is specified for the partInfo parameter for each of the partContent entries.

0002.3020 An error in the input to the 'submit' service. The number of entries in the partContent and partInfo inputs do not match

Explanation: The number of entries in the partContent and partInfo are not the same.

Action: Ensure that the number of entries in the partContent and partInfo parameters are the same.

A Built-In Services

■ Overview	74
■ Summary of Elements	74

Overview

This chapter describes the built-in services that Module for AS4 supports.

Summary of Elements

The following services are provided with the WmAS4 package:

Element	Description
<code>wm.ip.estd.as4.msh:submit</code>	Enables the sender to submit a payload to the initiating MSH.
<code>wm.ip.estd.as4.msh:sendPull</code>	Enables the receiver to send a pull signal to the responding MSH.
<code>wm.ip.estd.as4.util.pull:clearMPC</code>	Removes bizDocIDs that are cached in Module for AS4.
<code>wm.ip.estd.as4.util.pull:getMPCContents</code>	Returns the list of bizDocIDs queued in the specified MPC.
<code>wm.ip.estd.as4.util.multihop:routingFunction</code>	Returns the information needed to forward a received message in a multi-hop exchange.
<code>wm.ip.estd.as4.util.retry:cancelRetry</code>	Cancels the Retry that is scheduled for a given user message.
<code>wm.ip.estd.as4.util.split:getGroupList</code>	Retrieves a list of group IDs of the message fragments that have a given status.
<code>wm.ip.estd.as4.util.split:clearGroup</code>	Resets the status of a group.

`wm.ip.estd.as4.msh:submit`

Enables the sender to submit a payload to the initiating MSH, which packages the payload into a user message and sends it to the responding MSH. The MEP settings in the P-Mode control whether the message is sent immediately or queued in an MPC until a pull request is received.

Input Parameters

<i>messageId</i>	<p>String Optional. Unique identifier of the user message. If no value is specified, Module for AS4 generates a unique <i>messageId</i>.</p> <p>When the message is generated, the value of this parameter maps to eb:Messaging/eb:UserMessage/eb:MessageInfo/eb:MessageId.</p>
<i>toPartyId</i>	<p>String External ID of the party receiving the message, as defined in the trading partner profile.</p>

<i>toPartyIdType</i>	String External ID type of the party receiving the message, as defined in the trading partner profile.						
<i>fromPartyId</i>	String External ID of the party sending the message, as defined in the trading partner profile.						
<i>fromPartyIdType</i>	String External ID type of the party sending the message, as defined in the trading partner profile.						
<i>conversationId</i>	<p>String Optional. Identifier of the set of related messages that make up a conversation between two parties. If no value is specified, Module for AS4 generates a unique ID.</p> <p>The value of this property maps to eb:Messaging/eb:UserMessage/eb:CollaborationInfo/ eb:ConversationId.</p>						
<i>pmodeId</i>	String TPA agreement ID to use for the submit request.						
<i>property</i>	<p>Document List Optional. List of name-value pairs that are sent along with the message.</p> <p>These pairs map to the zero or more eb:Property child elements within eb:Messaging/eb:UserMessage/eb:MessageProperties.</p> <table border="1" data-bbox="521 961 1399 1108"> <thead> <tr> <th style="text-align: left;">Parameter</th> <th style="text-align: left;">Description</th> </tr> </thead> <tbody> <tr> <td><i>name</i></td> <td>String Name of property.</td> </tr> <tr> <td><i>value</i></td> <td>String Value of property.</td> </tr> </tbody> </table>	Parameter	Description	<i>name</i>	String Name of property.	<i>value</i>	String Value of property.
Parameter	Description						
<i>name</i>	String Name of property.						
<i>value</i>	String Value of property.						
<i>partInfo</i>	<p>Document List Optional. Metadata for the <i>partContent</i> parameter.</p> <p>The values specified map to the eb:Messaging/eb:UserMessage/eb:PayloadInfo/eb:PartInfo element.</p> <table border="1" data-bbox="521 1262 1399 1698"> <thead> <tr> <th style="text-align: left;">Parameter</th> <th style="text-align: left;">Description</th> </tr> </thead> <tbody> <tr> <td><i>type</i></td> <td> <p>String Way in which the <i>partContent</i> needs to be packaged. Valid values are:</p> <ul style="list-style-type: none"> ■ MIME PART—<i>partContent</i> is packaged as MIME attachment. ■ SOAP BODY—<i>partContent</i> is packaged in the SOAP body. ■ EXTERNAL REFERENCE—<i>partContent</i> is an external reference. </td> </tr> <tr> <td><i>id</i></td> <td>String ID of the <i>partContent</i>.</td> </tr> </tbody> </table>	Parameter	Description	<i>type</i>	<p>String Way in which the <i>partContent</i> needs to be packaged. Valid values are:</p> <ul style="list-style-type: none"> ■ MIME PART—<i>partContent</i> is packaged as MIME attachment. ■ SOAP BODY—<i>partContent</i> is packaged in the SOAP body. ■ EXTERNAL REFERENCE—<i>partContent</i> is an external reference. 	<i>id</i>	String ID of the <i>partContent</i> .
Parameter	Description						
<i>type</i>	<p>String Way in which the <i>partContent</i> needs to be packaged. Valid values are:</p> <ul style="list-style-type: none"> ■ MIME PART—<i>partContent</i> is packaged as MIME attachment. ■ SOAP BODY—<i>partContent</i> is packaged in the SOAP body. ■ EXTERNAL REFERENCE—<i>partContent</i> is an external reference. 						
<i>id</i>	String ID of the <i>partContent</i> .						

<i>schemaLocation</i>	<p>String URI of the schema.</p> <p>The value of this parameter maps to the <i>location</i> attribute of the <code>eb:Messaging/eb:UserMessage/eb:PayloadInfo/eb:PartInfo/eb:Schema</code> element.</p>				
<i>schemaVersion</i>	<p>String Version identifier of the schema.</p> <p>The value of this parameter maps to the <i>version</i> attribute of the <code>eb:Messaging/eb:UserMessage/eb:PayloadInfo/eb:PartInfo/eb:Schema</code> element.</p>				
<i>schemaNamespace</i>	<p>String Optional. Target namespace of the schema.</p> <p>The value of this parameter maps to the <i>namespace</i> attribute of the <code>eb:Messaging/eb:UserMessage/eb:PayloadInfo/eb:PartInfo/eb:Schema</code> element.</p>				
<i>Description</i>	<p>String Description of the <i>partContent</i>.</p> <p>The value of this parameter maps to the <code>eb:Messaging/eb:UserMessage/eb:PayloadInfo/eb:PartInfo/eb:Description</code> element.</p>				
<i>property</i>	<p>Document List List of name value pairs that are sent along with the message.</p> <p>The value of this parameter maps to the <code>eb:Messaging/eb:UserMessage/eb:PayloadInfo/eb:PartInfo/eb:PartProperties</code> element.</p> <table> <thead> <tr> <th><u>Parameter</u></th> <th><u>Description</u></th> </tr> </thead> <tbody> <tr> <td><i>name</i></td> <td> <p>String Name of the property.</p> <p>The value of this parameter maps to the <i>name</i> attribute of the <code>eb:Messaging/eb:UserMessage/eb:PayloadInfo/eb:PartInfo/eb:PartProperties/eb:Property</code> element.</p> </td> </tr> </tbody> </table>	<u>Parameter</u>	<u>Description</u>	<i>name</i>	<p>String Name of the property.</p> <p>The value of this parameter maps to the <i>name</i> attribute of the <code>eb:Messaging/eb:UserMessage/eb:PayloadInfo/eb:PartInfo/eb:PartProperties/eb:Property</code> element.</p>
<u>Parameter</u>	<u>Description</u>				
<i>name</i>	<p>String Name of the property.</p> <p>The value of this parameter maps to the <i>name</i> attribute of the <code>eb:Messaging/eb:UserMessage/eb:PayloadInfo/eb:PartInfo/eb:PartProperties/eb:Property</code> element.</p>				

	<i>value</i>	String Value of the property. The value of this parameter maps to the eb:Messaging/eb:User Message/eb:PayloadInfo/eb:PartInfo/eb:PartProperties/eb:Property element.
<i>partContent</i>		InputStream Array of all the MIME attachments. Each element within the array must have a corresponding <i>partInfo</i> .
<i>soapAction</i>		String Optional. Value of the <i>action</i> parameter in the MIME type.
<i>service</i>		String Optional. Name of service used to identify the RequestUM leg to be used for the current transaction. The module uses the <i>service</i> and <i>action</i> parameters to determine which RequestUM leg to use for the current transaction. The module compares the value of this parameter to the value of <i>leg/businessInfo/service</i> that is configured in all RequestUM legs of the TPA. The RequestUM leg that contains a match for both the <i>service</i> and <i>action</i> parameters is the leg that will be used for the current transaction. When there is only one RequestUM leg configured in the TPA, the <i>service</i> parameter does not have to be defined.
<i>action</i>		String Optional. Name of action used to identify the RequestUM leg to be used for the current transaction. The module uses the <i>service</i> and <i>action</i> parameters to determine which RequestUM leg to use for the current transaction. The module compares the value of this parameter to the value of <i>leg/businessInfo/action</i> that is configured in all RequestUM legs of the TPA. The RequestUM leg that contains a match for both <i>service</i> and <i>action</i> is the leg that will be used for the current transaction. When there is only one RequestUM leg configured in the TPA, the <i>action</i> parameter does not have to be defined.

Output Parameters

<i>error</i>	Document Any error that was encountered while processing the submission.	
	Parameter	Description
	<i>Code</i>	String ebms error code, if any.
	<i>Description</i>	String Description of the error.

wm.ip.estd.as4.msh:sendPull

Enables the receiver to send a pull signal to the responding MSH. The pulled user message is returned on the back channel of the pull request.

Input Parameters

<i>messageId</i>	String Unique identifier of the pull message.
<i>mpc</i>	String Optional. MPC from which to pull the queued message.
<i>pmodeId</i>	String Optional. TPA agreement ID to use for the pull request.
<i>soapAction</i>	String Optional. Value of the <i>action</i> parameter in the MIME message that was sent.

Output Parameters

error Document Any error that was encountered while processing the submission.

Parameter	Description
<i>Code</i>	String ebms error code, if any.
<i>Description</i>	String Description of the error.

wm.ip.estd.as4.util.pull:clearMPC

For the MPC specified, removes all bizDocIDs that are cached in Module for AS4. When the transaction analysis in Trading Networks is purged, you must invoke this service to clear the cache as well.

Input Parameters

<i>mpcName</i>	String Name of the MPC from which to clear the content.
<i>bizDocIDs</i>	String [] List of bizDocIDs to be cleared. If this parameter is null, all the contents of the MPC are cleared.

Output Parameters

None.

wm.ip.estd.as4.util.pull:getMPCContents

Returns the list of bizDocIDs queued in the specified MPC.

Input Parameters

mpcName String Name of the MPC from which to retrieve contents.

Output Parameters

results String [] List of bizDocIDs queued in the specified MPC.

wm.ip.estd.as4.util.multiphop:routingFunction

Returns the information needed to forward a received message in a multi-hop exchange. This is the default routing service that the intermediary MSH (Module for AS4) invokes to determine which MSH the received message should be forwarded to next.

This service uses the ebMS PartyInfo element and its sub-elements to determine the forwarding address. You can customize this service by editing the mappings in the WmAS4\config\RoutingTable.properties.

Input Parameters

routingInput Document A document reference to the com.wm.estd.as4.documents.multiphop.routingFunction:routingInput document type, which specifies the subset of the header content of the ebMS user message, specifically, the eb3:UserMessage element.

Output Parameters

result Document A reference to com.wm.estd.as4.documents.multiphop.routingFunction:NextDestination, which specifies the destination details for the message to be forwarded.

wm.ip.estd.as4.util.retry:cancelRetry

Cancels the Retry that is scheduled for a given user message.

Usually, when Retry is enabled and either the user message fails to be sent or no receipt is received for the user message, the module tries to resend the user message after a configured time interval. The cancelRetry service cancels retrying to send the user message.

Input Parameters

msgId **String** The message ID of the user message whose retry needs to be cancelled. If the user message is split into fragments, specifying the message ID of the user message will cancel all retries of all the fragments of the user message.

Output Parameters

taskCancelled **String** The status of the cancellation. When *taskCancelled* is true, retry was cancelled successfully. When *taskCancelled* is false, retry was not cancelled successfully.

wm.ip.estd.as4.util.split:getGroupList

Retrieves a list of group IDs of the message fragments that are in a given state.

When message splitting is enabled, each fragment group at the receiver side has a status of either ACTIVE, COMPLETE, EXPIRED, or REJECTED. The `getGroupList` service retrieves a list of the group IDs of those fragments that are in the specified status.

Input Parameter

status **String** The status of the fragments you want to be listed. Valid values are:

- ACTIVE—One or more fragments of the group was received and there are still more fragments to come.
- COMPLETE—All fragments in the group were received.
- EXPIRED—A group fragment was received after the time set for the *joinInterval* parameter elapsed.
- REJECTED—There was a problem during processing of one of the fragments in the group.

Output Parameters

groupIds **String[]** The list of all the group IDs that have the specified status.

wm.ip.estd.as4.util.split:clearGroup

Resets the status of a group.

Input Parameters

<i>status</i>	String Specifies the status of the groups whose status you want reset. Valid values are: <ul style="list-style-type: none">■ ACTIVE—One or more fragments of the group was received and there are still more fragments to come.■ COMPLETE—All fragments in the group were received.■ EXPIRED—A group fragment was received after the time set for the <i>joinInterval</i> parameter elapsed.■ REJECTED—There was a problem during processing of one of the fragments in the group.
<i>groupIds</i>	String[] Specifies the array of group IDs that have to be reset. When a value is specified, the value of the <i>status</i> parameter is ignored.

Output Parameters

None.

B Supported P-Mode Parameters

■ Overview	84
■ Supported P-Mode Parameters	84

Overview

This appendix names the P-Mode parameters that Module for AS4 supports.

Supported P-Mode Parameters

Module for AS4 supports the following P-Mode parameters:

- PMoDe.ID
- PMoDe.Agreement
- PMoDe.MEP
- PMoDe.MEPbinding
- PMoDe.Initiator.Party
- PMoDe.Initiator.Role
- PMoDe.Initiator.Authorization.username
- PMoDe.Initiator.Authorization.password
- PMoDe.Responder.Party
- PMoDe.Responder.Role
- PMoDe.Responder.Authorization.username
- PMoDe.Responder.Authorization.password
- PMoDe.Protocol.Address
- PMoDe.BusinessInfo.Service
- PMoDe.BusinessInfo.Action
- PMoDe.BusinessInfo.Properties
- PMoDe.BusinessInfo.PayloadProfile
- PMoDe.BusinessInfo.PayloadProfile.maxSize
- PMoDe.ErrorHandling.Report.SenderErrorsTo
- PMoDe.ErrorHandling.Report.ReceiverErrorsTo
- PMoDe.ErrorHandling.Report.AsResponse
- PMoDe.ErrorHandling.Report.ProcessErrorNotifyConsumer
- PMoDe.ErrorHandling.Report.ProcessErrorNotifyProducer
- PMoDe.ErrorHandling.Report.DeliveryFailuresNotifyProducer
- PMoDe.Security.X509.Sign

PMode.Security.X509.Signature.Certificate
PMode.Security.X509.Signature.HashFunction
PMode.Security.X509.Signature.Algorithm
PMode.Security.X509.Encryption.Encrypt
PMode.Security.X509.Encryption.Certificate
PMode.Security.X509.Encryption.Algorithm
PMode.Security.UsernameToken.username
PMode.Security.UsernameToken.password
PMode.Security.PModeAuthorize
PMode.Security.SendReceipt
PMode.Security.SendReceipt.ReplyPattern
PMode.ReceptionAwareness
PMode.ReceptionAwareness.Retry
PMode.ReceptionAwareness.Retry.Parameters
PMode.ReceptionAwareness.DuplicateDetection
PMode.PayloadService.Compression
PMode.Splitting.FragmentSize
PMode.Splitting.JoinInterval
PMode.Protocol.AddActorOrRoleAttribute

