

NaturalONE

Sample Applications

Version 9.3.3

October 2025

This document applies to NaturalONE Version 9.3.3 and all subsequent releases.

Specifications contained herein are subject to change and these changes will be reported in subsequent release notes or new editions.

Copyright © 2009-2025 Software GmbH, Darmstadt, Germany and/or its subsidiaries and/or its affiliates and/or their licensors.

The name Software AG and all Software GmbH product names are either trademarks or registered trademarks of Software GmbH and/or its subsidiaries and/or its affiliates and/or their licensors. Other company and product names mentioned herein may be trademarks of their respective owners.

Detailed information on trademarks and patents owned by Software GmbH and/or its subsidiaries is located at <https://softwareag.com/licenses>.

Use of this software is subject to adherence to Software GmbH's licensing conditions and terms. These terms are part of the product documentation, located at <https://softwareag.com/licenses> and/or in the root installation directory of the licensed product(s).

This software may include portions of third-party products. For third-party copyright notices, license terms, additional rights or restrictions, please refer to "License Texts, Copyright Notices and Disclaimers of Third-Party Products". For certain specific third-party license restrictions, please refer to section E of the Legal Notices available under "License Terms and Conditions for Use of Software GmbH Products / Copyright and Trademark Notices of Software GmbH Products". These documents are part of the product documentation, located at <https://softwareag.com/licenses> and/or in the root installation directory of the licensed product(s).

Use, reproduction, transfer, publication or disclosure is prohibited except as specifically provided for in your License Agreement with Software GmbH.

Document ID: ONE-TRAVEL-933-20251029

Table of Contents

Preface	v
1 About this Documentation	1
Document Conventions	2
Online Information and Support	2
Data Protection	3
2 Installing the Sample Applications	5
3 Hello World Application	9
About the Sample Application	10
Installing the Sample Application	10
Starting the Sample Application	10
4 Travel Approval Application	13
About the Sample Application	14
Prerequisites	14
Installing the Sample Application	14
Defining the Use of an External Web Browser	14
Starting the Sample Application	15
Logging in as an Employee for Requesting a Business Trip	16
Entering a Travel Request with Flight and Hotel Information	18
Adding Additional Expenses to Your Travel Request	21
Logging in as a Manager for Approving Travel Requests	23
Approving a Travel Request	24
5 Natural for Ajax Demos	27
About the Natural for Ajax Demos	28
Installing the Natural for Ajax Demos	28
Starting the Natural for Ajax Demos	28

Preface

This documentation explains how to install and use the sample applications that are provided with NaturalONE. It is organized under the following headings:

Installing the Sample Applications

How to install the sample applications from the welcome page.

Hello World Application

The Hello World application is the preferred starting point for using NaturalONE. This is a simple sample which demonstrates a Natural project which implements a Hello World application by using Natural for Ajax.

Travel Approval Application

This sample demonstrates a Natural project which implements an Ajax application for a business travel approval system.

Natural for Ajax Demos

A collection of small Natural for Ajax samples which demonstrate how to use the different controls and how to bind them to Natural server-side processing.

1

About this Documentation

■ Document Conventions	2
■ Online Information and Support	2
■ Data Protection	3

Document Conventions

Convention	Description
Bold	Identifies elements on a screen.
Monospace font	Identifies service names and locations in the format <i>folder.subfolder.service</i> , APIs, Java classes, methods, properties.
<i>Italic</i>	Identifies: Variables for which you must supply values specific to your own situation or environment. New terms the first time they occur in the text. References to other documentation sources.
Monospace font	Identifies: Text you must type in. Messages displayed by the system. Program code.
{ }	Indicates a set of choices from which you must choose one. Type only the information inside the curly braces. Do not type the { } symbols.
	Separates two mutually exclusive choices in a syntax line. Type one of these choices. Do not type the symbol.
[]	Indicates one or more options. Type only the information inside the square brackets. Do not type the [] symbols.
...	Indicates that you can type multiple options of the same type. Type only the information. Do not type the ellipsis (...).

Online Information and Support

Product Documentation

You can find the product documentation on our documentation website at <https://documentation.softwareag.com>.

Product Training

You can find helpful product training material on our Learning Portal at <https://learn.software-ag.com>.

Tech Community

You can collaborate with Software GmbH experts on our Tech Community website at <https://tech-community.softwareag.com>. From here you can, for example:

- Browse through our vast knowledge base.
- Ask questions and find answers in our discussion forums.
- Get the latest Software GmbH news and announcements.
- Explore our communities.
- Go to our public GitHub and Docker repositories at <https://github.com/softwareag> and <https://hub.docker.com/publishers/softwareag> and discover additional Software GmbH resources.

Product Support

Support for Software GmbH products is provided to licensed customers via our Empower Portal at <https://empower.softwareag.com>. Many services on this portal require that you have an account. If you do not yet have one, you can request it at <https://empower.softwareag.com/register>. Once you have an account, you can, for example:

- Download products, updates and fixes.
- Search the Knowledge Center for technical information and tips.
- Subscribe to early warnings and critical alerts.
- Open and update support incidents.
- Add product feature requests.

Data Protection

Software AG products provide functionality with respect to processing of personal data according to the EU General Data Protection Regulation (GDPR). Where applicable, appropriate steps are documented in the respective administration documentation.

2 Installing the Sample Applications

When you start NaturalONE for the very first time, you will see a so-called “Welcome” page. From this page, you can install several sample applications for NaturalONE. If the welcome page is not visible, you can open it as described below.

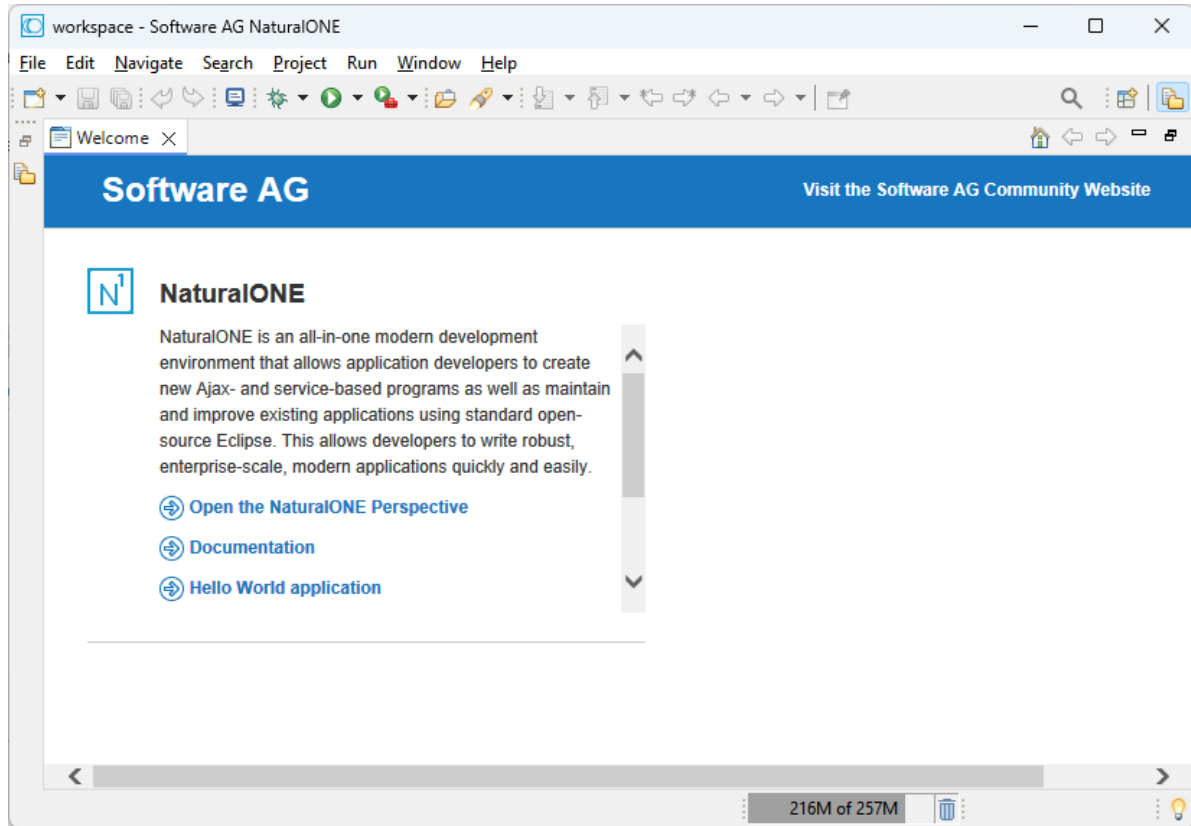


Important: Before installing a sample application, open the NaturalONE perspective and wait until the startup of the local Tomcat server has completed. When you start NaturalONE for the very first time, this will take some time. In the **Console** view, you can keep track of the Tomcat status.

➤ To install a sample application

- 1 From the **Help** menu of Eclipse, choose **Welcome**.

The welcome page appears.



- 2 In the NaturalONE list box, scroll down until you see the following links for the sample applications.

- ➔ Hello World application
- ➔ Travel Approval application
- ➔ Database access application
- ➔ Natural for Ajax demos
- ➔ Natural for Ajax responsive tutorial

- 3 To install a sample application, click the corresponding link in the NaturalONE list box.

The sample application is copied to your workspace. The **Project Explorer** view is automatically shown, containing the new sample application as a new project.



Tip: To get more space for the views of the Natural perspective, close the welcome page.

- 4 After installing a sample application, it is recommended that you rebuild the project using the **Clean** command from the **Project** menu.

If the **Build Automatically** command in the **Project** menu is currently not active, make sure that **Start a build immediately** is switched on in the **Clean** dialog box.

3

Hello World Application

■ About the Sample Application	10
■ Installing the Sample Application	10
■ Starting the Sample Application	10

About the Sample Application

The Hello World application is the preferred starting point for using NaturalONE. This is a simple sample which demonstrates a Natural project which implements a Hello World application by using Natural for Ajax.

Installing the Sample Application

Install the sample application by clicking **Hello World application** on the welcome page. A new project named "NaturalONE Hello World Sample Application" will then be shown in the **Project Explorer** view. See also [Installing the Sample Applications](#).

Starting the Sample Application

You start your first Natural application by executing the program `HELLO-P.NSP` in the `SAMPL4ONE` library.

➤ To start the sample application

- 1 In the **Project Explorer** view, expand the project **NaturalONE Hello World Sample Application**.



Note: By default, the environment to which a Natural project pertains is shown next to the project name. For the sample applications, the environment name is "natural-runtime". This is the local Natural runtime which enables you to execute your applications without having to use a remote development environment. The number in parentheses which is also shown next to the project name indicates the number of Natural libraries in this project. This is part of the so-called label decoration.

There are two folders:

■ **Natural-Libraries**

Natural-Libraries contains the folder **SAMP4ONE**. This is the Natural library for this sample application.

SAMP4ONE contains the folder **SRC**. This folder contains the Natural source files.

HELLO-A.NS8 is the Natural adapter, that is, the Natural interface to the Ajax page.

HELLO-P.NSP is the Natural program which implements this simple Hello World application.

■ **User-Interface-Components**

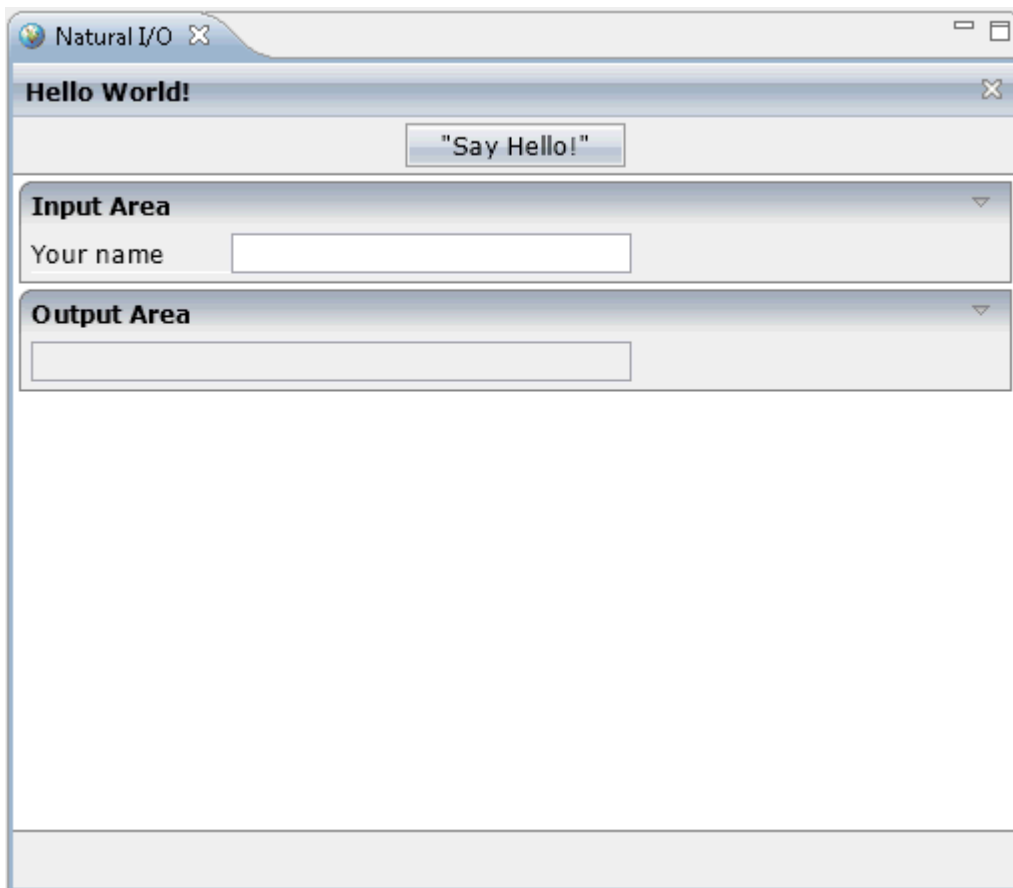
User-Interface-Components contains the folder **samplecomponents** which in turn contains the folder **xml**.

helloworld.xml contains the Ajax page layout. This page layout is defined with the Layout Painter, which is invoked from the context menu with **Open With > Layout Painter**.

For detailed information about the Natural for Ajax technology, see *Natural for Ajax*.

- 2 Select the program **HELLO-P.NSP**, invoke the context menu and choose **Run As > Natural Application**.

The output is now shown.



- 3 Enter your name in the **Input Area** and choose the **Say Hello** button.

Your name is now shown in the **Output Area**.

4 Travel Approval Application

■ About the Sample Application	14
■ Prerequisites	14
■ Installing the Sample Application	14
■ Defining the Use of an External Web Browser	14
■ Starting the Sample Application	15
■ Logging in as an Employee for Requesting a Business Trip	16
■ Entering a Travel Request with Flight and Hotel Information	18
■ Adding Additional Expenses to Your Travel Request	21
■ Logging in as a Manager for Approving Travel Requests	23
■ Approving a Travel Request	24

About the Sample Application

The Travel Support System (this is the name that you can see on the screen when executing the application) is a small sample application for NaturalONE. As a sample application, its focus is to show NaturalONE functionality rather than being a full-fledged travel support application.

The Travel Support System (TSS) allows you to request and approve business trips. Flights, hotels and even more external information such as cell phone expenses or car rentals can be entered with the trip request. For the destination, weather information can be queried. A manager can do both, request own trips as well as approve trips that have been requested by employees. After the manager has approved single or multiple requests, the manager can print an itinerary or receive the itinerary as a PDF file.

The usage of the travel approval application is described below.

Prerequisites

In order to use the sample application, Adabas Version 6.1.9 or above must be installed and started.

Installing the Sample Application

Install the sample application by clicking **Travel Approval application** on the welcome page. A new project named "Travel" will then be shown in the **Project Explorer** view. See also [Installing the Sample Applications](#).

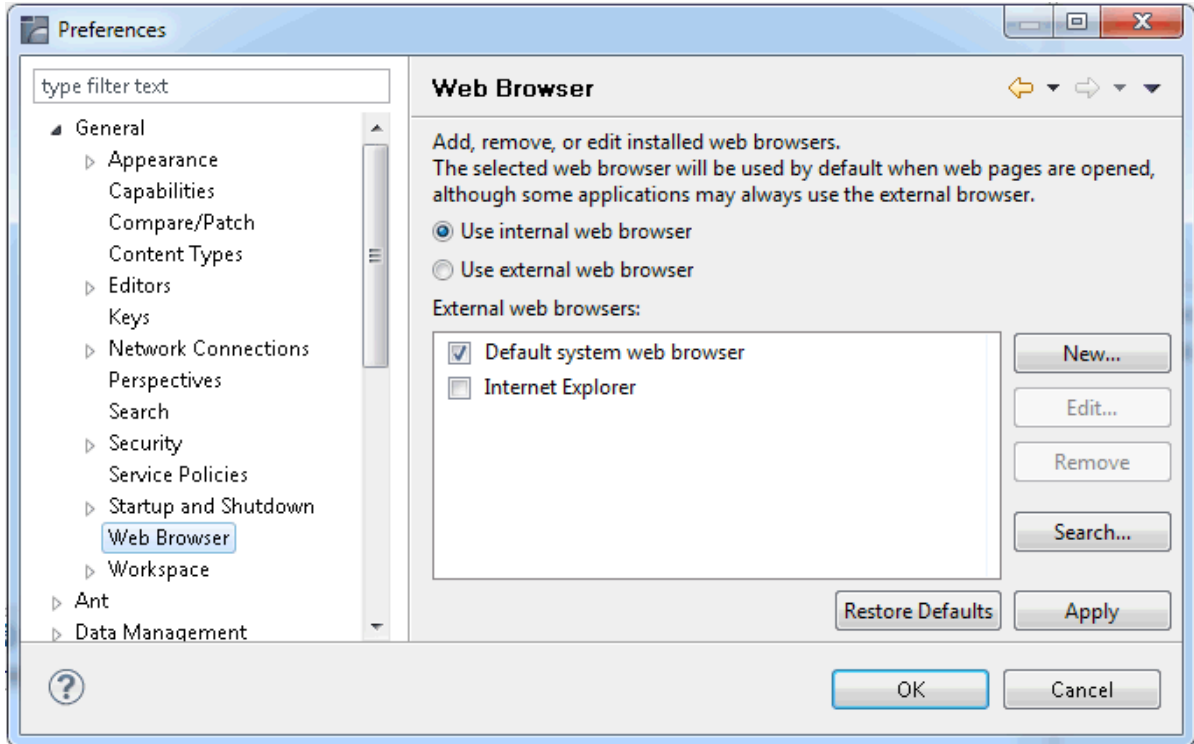
Defining the Use of an External Web Browser

You will now make sure that the sample application is executed in an external web browser and not in the internal web browser.

➤ **To define the use an external web browser**

- 1 From the **Window** menu, choose **Preferences**.
- 2 Expand the **General** node and select **Web Browser**.

The following page appears.



- 3 Select the **Use external web browser** option button and choose the **OK** button.

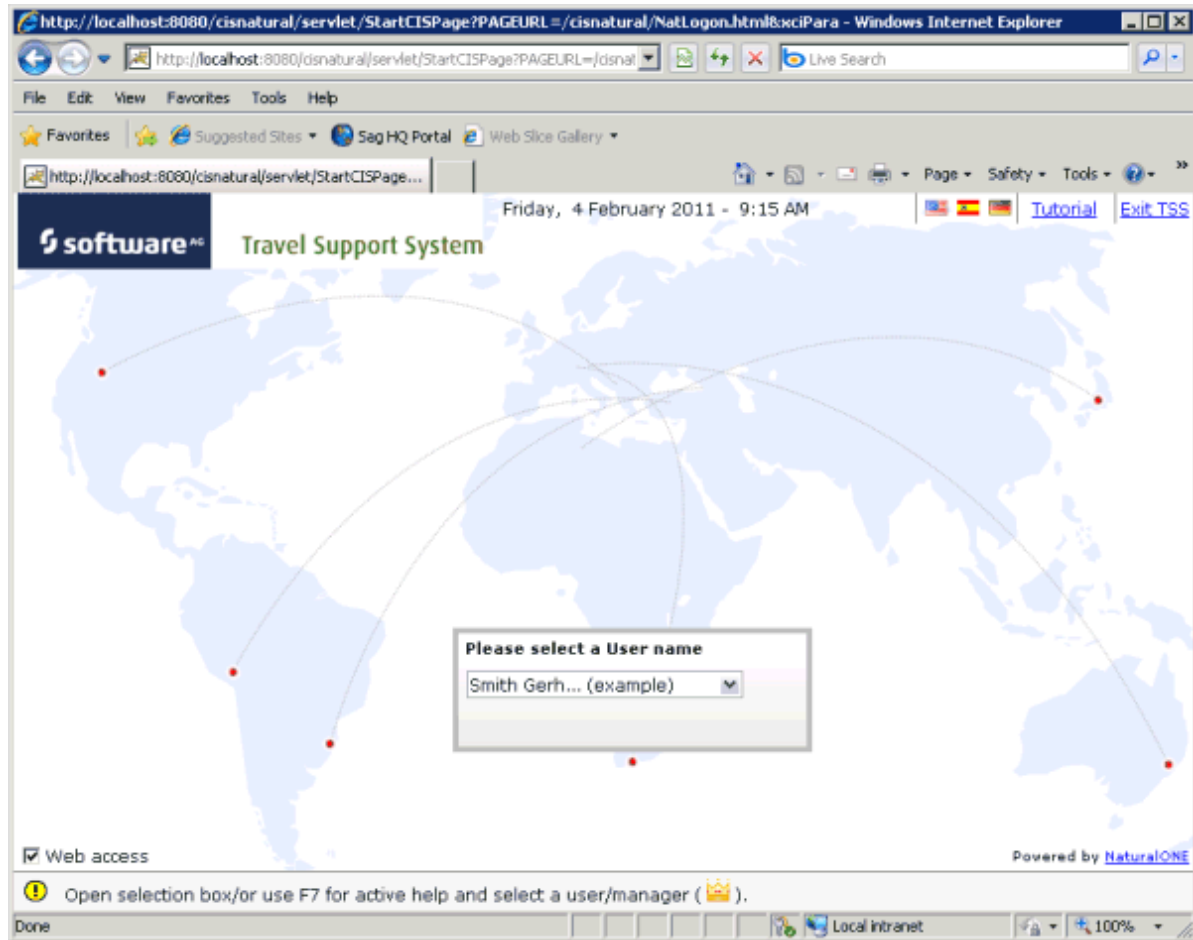
Starting the Sample Application

You start the sample application by executing the program `LOGIN.NSP` in the `TRAVEL` library.

➤ To start the sample application

- 1 In the **Project Explorer** view, expand the project **Travel**.
- 2 Expand the following nodes:
 1. **Natural-Libraries**
 2. **TRAVEL**
 3. **SRC**
- 3 Scroll down until you see the program name `LOGIN.NSP`.
- 4 Select `LOGIN.NSP`, invoke the context menu and choose **Run As > Natural Application**.

The sample application is executed. Since you have specified so in the preferences, it is executed in an external browser window.



Logging in as an Employee for Requesting a Business Trip



You will now log in as an employee (with limited rights) and request a business trip.

➤ To log in as an employee

- 1 In the **Please select a User name** dialog, type "A" over the name that is currently shown in the drop-down list box.

The drop-down list box opens, displaying the names of all employees and managers which start with the letter "A". This information comes from the Adabas demo database.

Please select a User name

- ABELLAN KEPA
- ACHIESON ROBERT
-  ADAM SIMONE (manager)
- ADKINSON JEFF
- ADKINSON PHYLLIS
-  ADKINSON HAZEL (manag
- ADKINSON DAVID
- ADKINSON CHARLIE

- 2 Select the name "ADKINSON DAVID".

Please select a User name

- 3 Choose the **Enter New Request** button.

The following screen appears. Here, you will enter your travel request.

software[™] Travel Support System

Friday, 4 February 2011 - 9:31 AM You're logged in as DAVID ADKINSON [Log-out](#)

New Travel Request

Reason

Departure information

City,Country Pick a date

Return information

City,Country Pick a date

Travel Expenses

My Travels

Travel Details Total cost

Map

Flight Booking

Select a flight

Hotel Booking

Select a hotel

Other Expenses (CSV file)

Add other expenses from a .csv file.

Upload .csv

Weather

Select a City for forecast

Washington 4°C

Beijing 11°C

Start by filling Travel reason, departure and return info


Entering a Travel Request with Flight and Hotel Information

You will now enter and submit your travel request. This includes the following information:

- City and date for departure.
- City and date for return flight.
- Flight number.
- Hotel name.

➤ To enter a travel request

- 1 In the **Reason** text box, enter the reason for your travel plans. For example:



New Travel Request

Reason

I have a series of meetings with customers regarding our new product NaturalONE.

- 2 Under **Departure information**, open the drop-down list box.



Departure information

City, Country

Washington, USA,

Beijing, China

Frankfurt, Germany

Paris, France

Toronto, Canada

Melbourne, Australia

Moscow, Russia

Amsterdam, Netherlands

Vienna, Austria

City, Country

Pick a date

Pick a date

Total cost

- 3 Select **Toronto, Canada**.
- 4 Click on **Pick a date** which is shown to the right of the departure information.
- 5 In the resulting **Date Input** dialog, select the desired date for your flight to Toronto (for example, February 21, 2012).
- 6 Under **Return information**, open the drop-down list box.

Departure information

City, Country 2012-02-21

Return information

City, Country Pick a date

Washington, USA,
Beijing, China
Frankfurt, Germany
Paris, France
Toronto, Canada
Melbourne, Australia
Moscow, Russia
Amsterdam, Netherlands
Vienna, Austria
City, Country

Total cost

- 7 Select **Beijing, China**.
- 8 Click on **Pick a date** which is shown to the right of the return information.
- 9 In the resulting **Date Input** dialog, select the desired date for your return flight from Beijing (for example, February 28, 2012).

Departure information

Toronto, Canada 2012-02-21

Return information

Beijing, China 2012-02-28

You have now entered the basic information needed to make travel plans. Next, you will book a flight and a hotel.

- 10 Under **Flight Booking**, open the drop-down list box.

Flight Booking

Select a flight

British Airways Flight: # 7684 ,
Lufthansa Flight: # 1 , 988
BMI Flight: # 9803 , 469
Singapore Airlines Flight: # 696
Austrian Airlines Flight: # 2239
Swiss Flight: # 423 , 423
Air France Flight: # 5705 , 878
Continental Airlines Flight: # 4207
Iberia Airlines Flight: # 7 , 975
Select a flight

- 11 Select **Continental Airlines Flight: #4207**.

The selected flight is shown under **Travel Expenses**.

Travel Expenses	
* Detail	Cost
✈ Continental Airlines Flight: # 4207	777.0

Submit Request Delete rows Cancel Request **777**

- 12 Under **Hotel Booking**, open the drop-down list box.

Hotel Booking

Select a hotel

- HILTON,150
- FOUR SEASONS,109
- SHERATON,89
- WALDORF ASTORIA,250
- RITZ CARLTON,200
- EDEN ROCK,69
- GRAND MERCURE ROXY,99
- SOFITEL,125
- HOLIDAY INN,66

Select a hotel

- 13 Select **HILTON,150**.

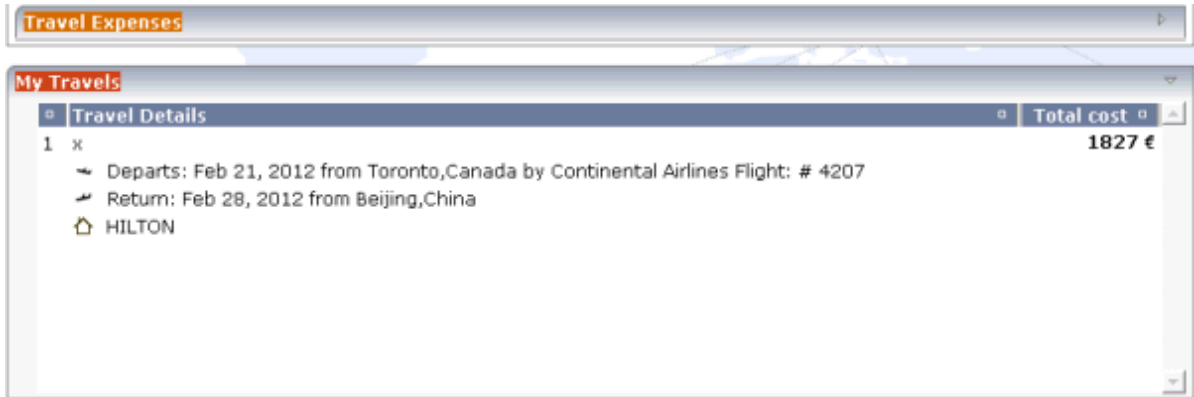
The selected hotel is also shown under **Travel Expenses**, including the costs (7 nights * 150 = 1050). The total cost has also been updated (1827).

Travel Expenses	
* Detail	Cost
✈ Continental Airlines Flight: # 4207	777.0
🏠 HILTON	1050.0

Submit Request Delete rows Cancel Request **1827**

- 14 Choose the **Submit Request** button.

The **Travel Expenses** area is closed, and the **My Travels** area shows the travel details.



At the bottom of the screen, you can see a message informing you that the travel request has been accepted (pending approval), and that you can now either create a new request or log out.

Adding Additional Expenses to Your Travel Request

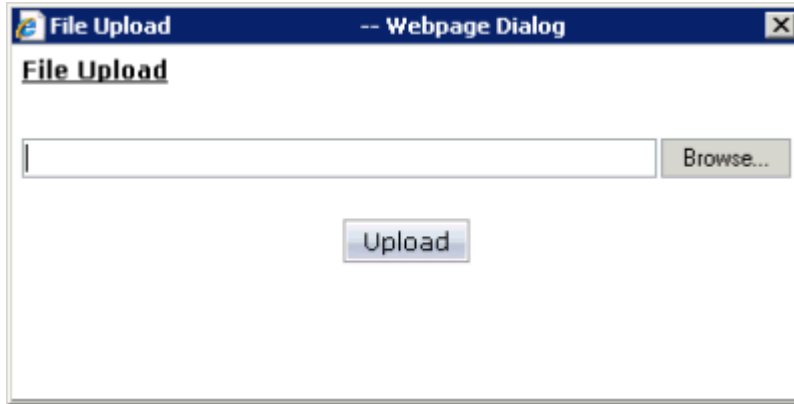
You will now add additional expenses from a CSV file to your travel request. This is just for demonstration purposes and you will delete these expenses before you log out.

> To add additional expenses

- 1 Under **Other Expenses**, choose the **Upload .csv** button.



The **File Upload** dialog appears.



- 2 Choose the **Browse** button.
- 3 In the resulting **Choose File to Upload** dialog, navigate to the location of your Eclipse workspace. Here, you can find the project directory that has been created for your travel application.

The demo CSV file which comes with the travel application is located in the *Expenses* folder of the project and has the name *expenses_trip1.csv*.

- 4 Select the file *expenses_trip1.csv* and choose the **Open** button.

The path to the selected file is shown in the **File Upload** dialog.

- 5 In the **File Upload** dialog, choose the **Upload** button.

The contents of the CSV file is shown under **Travel Expenses**.



You will now delete the two items that were added from the CSV file.

- 6 Select both lines (press SHIFT or CTRL to select the second line).
- 7 Choose the **Delete rows** button.
- 8 Log out by clicking on the **Log-out** link which is located at the top right of the screen.

The login screen containing the **Please select a User name** dialog is shown again.

Logging in as a Manager for Approving Travel Requests

In order to approve the travel request you have just entered, you will now log in as a manager.

➤ To log in as a manager

- 1 In the **Please select a User name** dialog, open the drop-down list box and select the name "ARCONADA PEDRO".

For this user, an **Approve Requests** button is shown which is only available to managers.

- 2 Choose the **Approve Requests** button.

The following screen appears, listing the travel requests that are waiting for approval.

software Travel Support System

Friday, 4 February 2011 - 12:06 PM | You're logged in as PEDRO ARCONADA | [Log-out](#)

Travel cost details

Employee details

Name DAVID ADKINSON - SECRETARY (dept. MGMT10)
 Address 11 HOLLY GREEN
 City CHAPEL HILL
 Country USA Zip Code 27514

Travel details

Travel Reason
 Leaving Toronto, Canada On 2012-02-21
 Traveling to Beijing, China Returning 2012-02-28

Department (MGMT) statistics

Travel budget

Members of staff - Requests status

Name	Approved	Pending
DAVID ADKINSON	0	1

Submit approved requests

Employee	Request info	Cost
DAVID ADKINSON	Continental Airlines Flight: # 4207 / HILTON /	1827.0

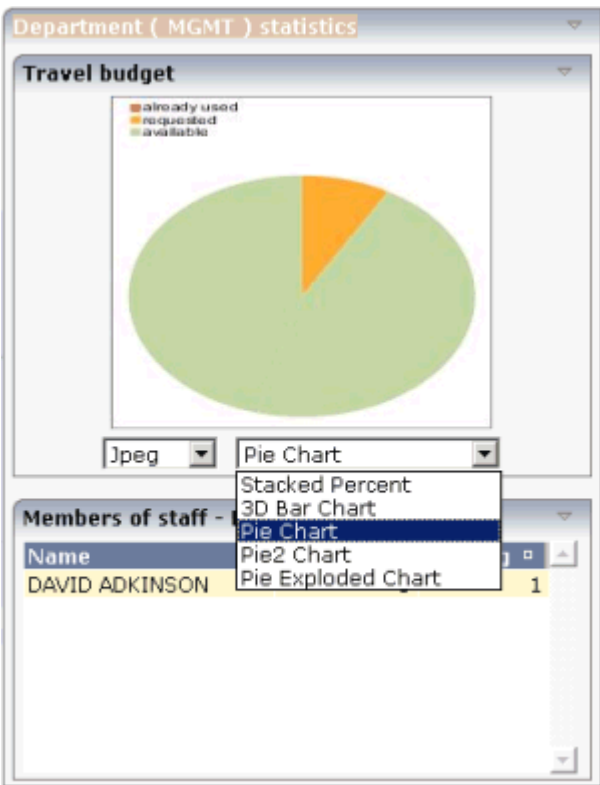
Click a Travel Request row for details, DoubleClick to approve

Approving a Travel Request

After you have logged in as a manager, you can approve travel requests.

> **To approve a travel request**

- 1 Under **Department (MGMT) statistics**, open the drop-down list box for the different types of pie charts.

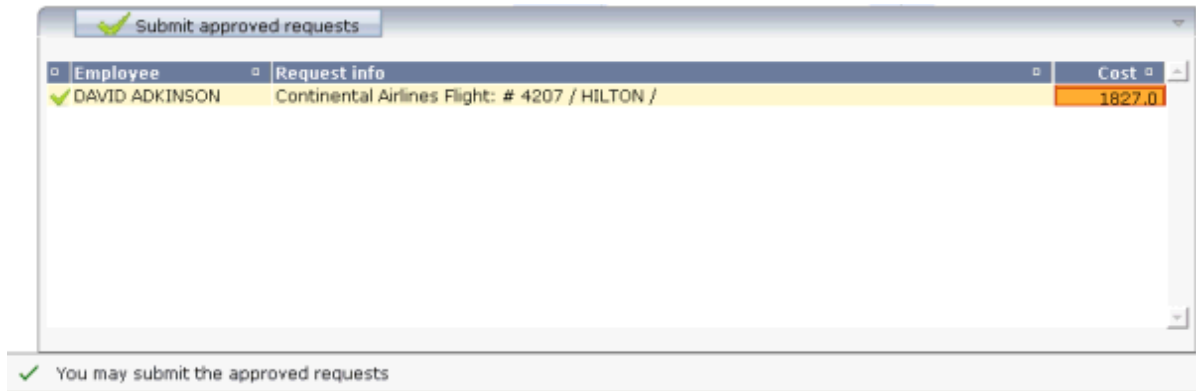


- 2 Select **Pie Exploded Chart**.

A different chart is shown, indicating the total travel budget that is available for the department, and how much of the budget is currently requested.

- 3 In the table at the bottom left of the screen (below the **Submit approved requests** button), double-click the row containing the employee name "DAVID ADKINSON".

A check mark is now shown in front of the row, and a message is shown at the bottom of the screen informing you that you may submit the approved requests.



- 4 Choose the **Submit approved requests** button.

The following dialog appears, containing the travel details for David Adkinson.



- 5 Click on the PDF icon (📄) at the top right of the dialog.

When appropriate PDF viewing software such as Adobe Reader is installed, the PDF output is shown and you can print it.

5

Natural for Ajax Demos

■ About the Natural for Ajax Demos	28
■ Installing the Natural for Ajax Demos	28
■ Starting the Natural for Ajax Demos	28

About the Natural for Ajax Demos

The Natural for Ajax demos show you how to use the different controls and write the corresponding Natural server-side processing. When you start one of the samples, a corresponding description is shown which explains the sample and provides implementation hints.

Installing the Natural for Ajax Demos

Install the samples by clicking **Natural for Ajax Demos** on the welcome page. A new project named "NaturalAjaxDemos" will then be shown in the **Project Explorer** view. See also [Installing the Sample Applications](#).

Starting the Natural for Ajax Demos

You can start the main program which lets you select single samples by executing the program MENU-NJX.NSP.

You can also start single samples directly by executing the corresponding program, for example, CALCUL-P.