

## **Import/Export Functions**

Version 5.5.2

April 2024

This document applies to Version 5.5.2 and all subsequent releases.

Specifications contained herein are subject to change and these changes will be reported in subsequent release notes or new editions.

Copyright © 2006-2024 Software AG, Darmstadt, Germany and/or Software AG USA, Inc., Reston, VA, USA, and/or its subsidiaries and/or its affiliates and/or their licensors.

The name Software AG and all Software AG product names are either trademarks or registered trademarks of Software AG and/or Software AG USA, Inc. and/or its subsidiaries and/or its affiliates and/or their licensors. Other company and product names mentioned herein may be trademarks of their respective owners.

Detailed information on trademarks and patents owned by Software AG and/or its subsidiaries is located at <http://softwareag.com/licenses>.

Use of this software is subject to adherence to Software AG's licensing conditions and terms. These terms are part of the product documentation, located at <http://softwareag.com/licenses/> and/or in the root installation directory of the licensed product(s).

This software may include portions of third-party products. For third-party copyright notices, license terms, additional rights or restrictions, please refer to "License Texts, Copyright Notices and Disclaimers of Third-Party Products". For certain specific third-party license restrictions, please refer to section E of the Legal Notices available under "License Terms and Conditions for Use of Software AG Products / Copyright and Trademark Notices of Software AG Products". These documents are part of the product documentation, located at <http://softwareag.com/licenses> and/or in the root installation directory of the licensed product(s).

Use, reproduction, transfer, publication or disclosure is prohibited except as specifically provided for in your License Agreement with Software AG.

**Document ID: OGC-ONOPUTILITIES-552-20240427**

## Table of Contents

Preface .....	v
1 About this Documentation .....	1
Document Conventions .....	2
Online Information and Support .....	2
Data Protection .....	3
2 General Purpose and Backward Compatibility .....	5
Record Format .....	6
Export File Format .....	7
Backward Compatibility of Export .....	7
3 Using Import and Export Functions .....	9
Importing Objects .....	10
Exporting Objects .....	19
Repeating an Import or Export Operation .....	28
Retention Period for Import/Export Requests from Entire Operations GUI Client .....	29
4 Syntax in Import/Export Files and Object Processing Rules .....	31
Basic Syntax Rules .....	32
Field Definitions .....	33
Object Descriptions .....	36
Comments .....	36
Reserved Keywords .....	36
Sub-Objects .....	37
Special Considerations for Import .....	38
Hierarchical Order for Object Processing .....	41
Sample Network .....	43
5 Object Specification .....	57
OBJECT=NETWORK-MASTER .....	58
OBJECT=JOB-MASTER .....	61
OBJECT=JCL-MASTER .....	66
OBJECT=EOJ-CHECK-MASTER .....	66
OBJECT=DESCRIPTION .....	70
OBJECT=SCHEDULE .....	71
OBJECT=CALENDAR .....	72
OBJECT=TO-ACTIVATE .....	73
OBJECT=SYMBOL-MASTER .....	74
OBJECT=MAILBOX-DEFINITION .....	75
OBJECT=MAILBOX-ENTRY .....	75
OBJECT=NODE-DEFINITION .....	76
OBJECT=RESOURCE-DEFINITION .....	77
OBJECT=RESOURCE-PREREQ .....	78
OBJECT=USER-DEFINITION .....	78
OBJECT=DEFAULTS .....	81
OBJECT=GLOBAL-EXIT .....	84

OBJECT=CONDITION-ACTIVE ..... 85

---

## Preface

---

<b>General Purpose and Backward Compatibility</b>	Describes general import/export functionality and export migration issues.
<b>Using Import and Export Functions</b>	Describes how to import and export objects.
<b>Syntax in Import/Export Files and Object Processing Rules</b>	Explains the basic syntax used in import/export files and the rules for object processing.
<b>Object Specification</b>	Describes how to define the objects to be imported or exported.

---

# 1

## About this Documentation

---

■ Document Conventions .....	2
■ Online Information and Support .....	2
■ Data Protection .....	3

## Document Conventions

---

Convention	Description
<b>Bold</b>	Identifies elements on a screen.
Monospace font	Identifies service names and locations in the format <i>folder.subfolder.service</i> , APIs, Java classes, methods, properties.
<i>Italic</i>	Identifies:  Variables for which you must supply values specific to your own situation or environment. New terms the first time they occur in the text. References to other documentation sources.
Monospace font	Identifies:  Text you must type in. Messages displayed by the system. Program code.
{ }	Indicates a set of choices from which you must choose one. Type only the information inside the curly braces. Do not type the { } symbols.
	Separates two mutually exclusive choices in a syntax line. Type one of these choices. Do not type the   symbol.
[ ]	Indicates one or more options. Type only the information inside the square brackets. Do not type the [ ] symbols.
...	Indicates that you can type multiple options of the same type. Type only the information. Do not type the ellipsis (...).

## Online Information and Support

---

### Product Documentation

You can find the product documentation on our documentation website at <https://documentation.softwareag.com>.

In addition, you can also access the cloud product documentation via <https://www.software-ag.cloud>. Navigate to the desired product and then, depending on your solution, go to “Developer Center”, “User Center” or “Documentation”.

### Product Training

You can find helpful product training material on our Learning Portal at <https://knowledge.softwareag.com>.



## Tech Community

You can collaborate with Software AG experts on our Tech Community website at <https://tech-community.softwareag.com>. From here you can, for example:

- Browse through our vast knowledge base.
- Ask questions and find answers in our discussion forums.
- Get the latest Software AG news and announcements.
- Explore our communities.
- Go to our public GitHub and Docker repositories at <https://github.com/softwareag> and <https://hub.docker.com/publishers/softwareag> and discover additional Software AG resources.

## Product Support

Support for Software AG products is provided to licensed customers via our Empower Portal at <https://empower.softwareag.com>. Many services on this portal require that you have an account. If you do not yet have one, you can request it at <https://empower.softwareag.com/register>. Once you have an account, you can, for example:

- Download products, updates and fixes.
- Search the Knowledge Center for technical information and tips.
- Subscribe to early warnings and critical alerts.
- Open and update support incidents.
- Add product feature requests.

## Data Protection

---

Software AG products provide functionality with respect to processing of personal data according to the EU General Data Protection Regulation (GDPR). Where applicable, appropriate steps are documented in the respective administration documentation.



## 2 General Purpose and Backward Compatibility

---

■ Record Format .....	6
■ Export File Format .....	7
■ Backward Compatibility of Export .....	7

Import/export functions can be used for various purposes:

- Migration between different Entire Operations versions,
- Mass updates,
- Migration from other production control products or from user applications.



**Caution:** Be careful when migrating networks and jobs to other operating systems.

Entire Operations uses different sets of operating system specific fields for the supported platforms z/OS, BS2000, z/VSE, UNIX and Windows. As a result, the external format is incompatible from one platform to another. This depends on the operating system of the JCL node and/or on the operating system of the execution node of each network and job. If you edit the external format to achieve transportability to a different operating system, you do this at your own risk. It would therefore be advisable to contact Entire Operations support at Software AG for assistance.

## Record Format

---

The import/export functions provided by Entire Operations perform the following:

- Transform the records from the Entire Operations database into an external format, or
- Analyze an external format and transform it into the Adabas format.

The following is an example representation of Entire Operations objects within the database.

Job	Job-Type	Execution-Node	...
JOB-1	MAC	148	...
JOB-2	JOB	31	...

The same Entire Operations objects transformed into the external format would be as follows:

```
OBJECT=JOB
JOB=JOB-1
JOB-TYPE=MAC
EXECUTION-NODE=148
...
END-OBJECT
OBJECT=JOB
JOB=JOB-2
JOB-TYPE=JOB
EXECUTION-NODE=31
...
END-OBJECT
```

## Export File Format

---

The export file format conforms to the following specifications:

- A plain file format:
  - **Natural:**  
Natural Source format
  - With Natural Security Version 8.2.4 it is possible to use Natural libraries that are defined as private libraries in Natural Security as target/source of an export/import operation.
  - **UNIX, Windows:**  
ASCII text files
- The maximum record size does not exceed 240 (limited by Natural).
- Accessibility of the above file types by Entire System Server and/or Entire Connection.
- Simple external representation of all data types.
- The export file format does not contain any non-printable character or field in internal format because of EBCDIC - ASCII conversion.
- Keywords do not consist of any internal abbreviations (e.g. Adabas short names), since they may change from one version to another.
- PC or UNIX import and export.

## Backward Compatibility of Export

---

During all exports, you will be prompted for the export target version.

The export will then be performed in a way which is compatible to the target version.

The following reasons may cause an erroneous termination of the export:

- **A field is unknown to the earlier version**

If the field is unknown in the target (i.e. old) version, the field will be skipped.

If there is no useful way to export the object without meaning loss, the export will be terminated with an error.

- **A field size was increased**

If the field's content would not fit into the field size in the target version, the export will be terminated with an error. Otherwise data corruption would occur.

Example:

You try to export 5-digit node numbers to an Entire Operations version which can handle 3-digit node numbers only.

■ **An array size was increased**

If the actual size of an array is larger than the maximum array size in the target version, the export will be terminated with an error. Otherwise data corruption would occur.

■ **A value was added to the allowed value range of a field**

The export function attempts to export the field in a compatible way. Only if this is not possible, the export will be terminated with an error. Otherwise data corruption would occur.

# 3

## Using Import and Export Functions

---

■ Importing Objects .....	10
■ Exporting Objects .....	19
■ Repeating an Import or Export Operation .....	28
■ Retention Period for Import/Export Requests from Entire Operations GUI Client .....	29

Importing and exporting objects via Entire Operations is only possible if the Monitor is running. All import and export operations are executed asynchronously.

## Importing Objects

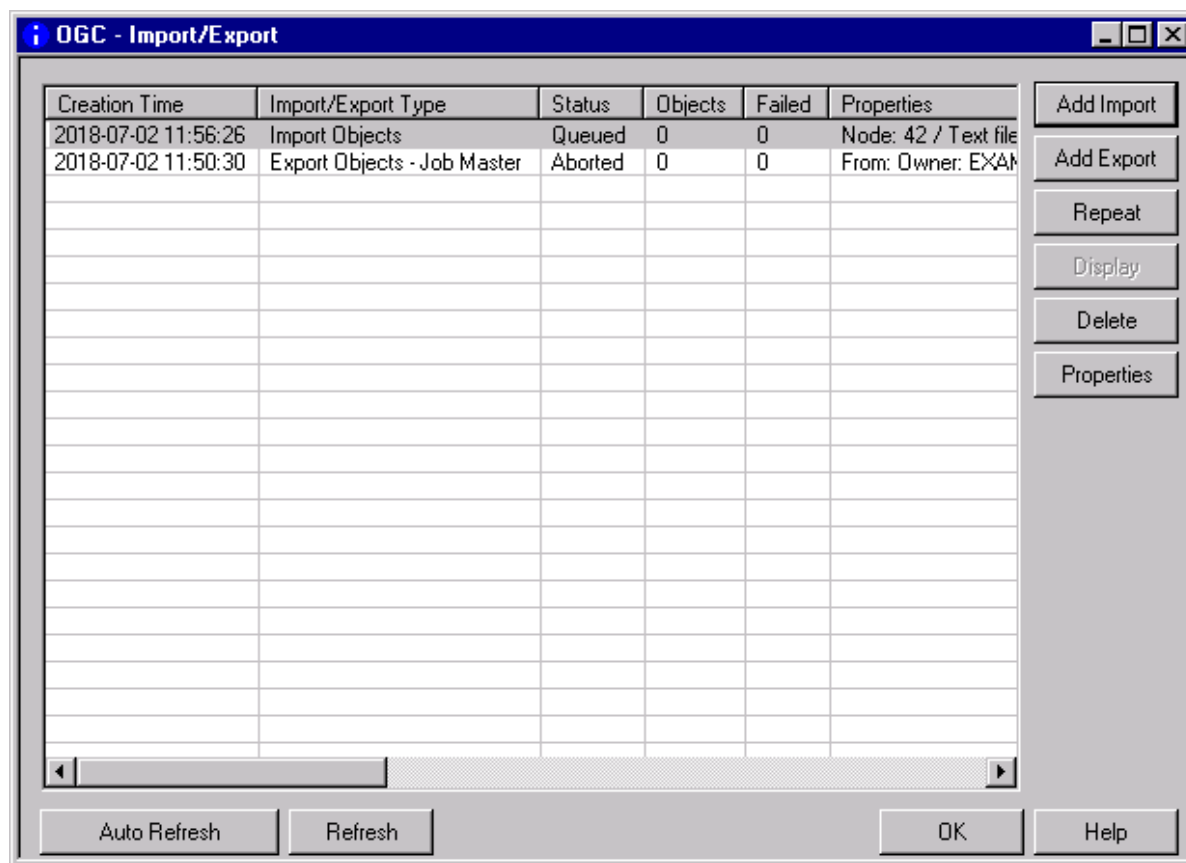
This section provides information on the process of importing objects and handling errors.

 **Caution:** You should use the `import` function with care. It can delete definitions from or add definitions to your database.

> **To import objects**

- 1 In the object workspace, select the **General** node and choose **Import/Export** from the context menu.

A user-specific **Import/Export** window like the example below opens:



The window lists all processing requests submitted for the objects to be imported (or exported). The list is empty if no requests exist.



The list indicates the current processing status and whether a request has been completed successfully.

The columns and functions available in the **Import/Export** window are described in [Columns: Import/Export Window](#) and [Functions: Import/Export Window](#), respectively.

- 2 Choose **Add Import**.

(See [Exporting Objects](#) for export instructions.)

An **Import Objects** window like the example below opens:

**OGC - Import Objects**

**From**

Location: Text file

Node: 42 QANODE42 (MVS/ESA)

Text file: %EOR\_WORK%/SAGNET-IMPORT-I

Favorites...

User ID: MMO

Group:

**Range of objects to be imported**

Owner: SAGTEST

Network: SAGNET

Job:

Initial mode: Update objects

Stop after: 5 errors

or: 10 warnings

Email: sag@softwareag.com

OK Cancel Help

The input fields available are described in [Fields and Options: Import Objects Window](#).

- 3 If required, specify the range of objects to be imported from the specified import file and change the import option.

Choose **OK** when you are finished.

The window closes, and the new import request is listed in the [Import/Export window](#).

If the import operation is successful, the objects are added, modified or deleted in the appropriate object node(s) of the object workspace.

The syntax that applies to the entries in the import file is explained in [Syntax in Import/Export Files and Object Processing Rules](#).

This section covers the following topics:

- [Columns: Import/Export Window](#)
- [Functions: Import/Export Window](#)
- [Fields and Options: Import Objects Window](#)
- [Using Favorites for Text Files](#)
- [Handling Import Errors](#)
- [Repeating a Failed Import](#)
- [Deleting Single or Multiple Import/Export Requests](#)

### Columns: Import/Export Window

The [Import/Export](#) window provides the following columns:

Column	Description
<b>Creation Time</b>	Date and time when the import or export request was added.
<b>Import/Export Type</b>	Operation to be performed (Import Objects or Export Objects) and the type of object selected for processing.
<b>Status</b>	Status of the import or export operation:
	Queued Import/export request is queued for processing.
	Running Operation is in progress.
	Completed Operation performed successfully.
	Aborted Operation failed.
<b>Objects</b>	Number of objects that were processed successfully.
<b>Failed</b>	Number of objects that were not processed successfully.
<b>Properties</b>	Properties settings used for processing a selected request.  These settings correspond to the information shown in the <a href="#">Import Objects</a> or <a href="#">Export Objects</a> window.

## Functions: Import/Export Window

The **Import/Export** window provides the following functions to add import and export requests, obtain information on a selected request or remove a request from the list:

Function	Description
<b>Add Import</b>	Opens the <b>Import Objects</b> window to specify the object you want to import.
<b>Add Export</b>	Opens the <b>Export Objects</b> window to specify the object you want to export.
<b>Repeat</b>	Repeats an import or export operation.  See also <i>Repeating an Import or Export Operation</i> .
<b>Display</b>	Displays an extended log file for a completed or aborted import or export operation listed in the window to view information and error messages (if any) on the import or export process.  For more information, see <i>Displaying Extended Log Information</i> in the <i>User's Guide</i> .
<b>Delete</b>	Deletes single or multiple requests (not the resulting output) selected in the table of the <b>Export Objects</b> window to clear the list queue after a request has been processed.  See also <i>Retention Period for Import/Export Requests from Entire Operations GUI Client</i> .
<b>Properties</b>	Displays the properties of a request which correspond to the information shown in the <b>Import Objects</b> or <b>Export Objects</b> window.

## Fields and Options: Import Objects Window

The fields and options provided in the **Import Objects** window are described in the following table.

All values entered in this window are checked for their validity. If a Natural object is specified as import file, the file existence is also checked.

Field	Description	
Location	The location of the file to be imported.	
	Select either of the following options:	
	Natural source	Import from a Natural text object. See also the fields <b>Library</b> and <b>Member prefix</b> .
	Text file	Import from a text file.
Library	Only for <b>Natural source</b> locations.	
	Enter the name of the library, where the Natural objects reside.	
Member prefix	Only for <b>Natural source</b> locations.	
	Enter the prefix (maximum is 5 characters) of the names of the objects to be imported or enter the name of a rejected object (ERR - <i>nnnn</i> , see also <b>Handling Import Errors</b> ).	

Field	Description
	For explanations of prefix, see the description of the <a href="#">Member prefix</a> field used for the export operation.
<b>Node</b>	Only for <b>Text file</b> locations.  Enter the name of the node through which the specified text file can be accessed. The text file must exist.
<b>Text file</b>	Only for <b>Text file</b> locations.  Enter the name of the text file to be used for the import operation.
<b>Favorites</b>	This option button is only available if <b>Text file</b> is selected: see <a href="#">Using Favorites for Text Files</a> .
<b>User ID</b>	Only for <b>Text file</b> locations.  Enter the default user ID if defined for the specified node.
<b>Group</b>	Only for <b>Text file</b> locations.  Enter the UNIX group or Windows domain (optional) if defined for the specified node.
<b>Initial Mode</b>	The mode to be used when starting to import the object definitions contained in the file to the Entire Operations database. The mode can change during import if the file contains mode commands.  Select one of the following options:
	<b>Check Objects</b> Check syntax of objects.
	<b>Add objects</b> Add objects to the database (default).
	<b>Update objects</b> Update objects on the database.
	<b>Replace objects</b> Replace objects on the database or add them if they do not exist.
	<b>Delete objects</b> Delete object from the database.
<b>Owner</b>	These fields can be used to define a range of objects to be imported from the import file.
<b>Network</b>	Enter the required owner, network and job.
<b>Job</b>	<b>Note:</b> <ol style="list-style-type: none"> <li>1. A selection on a lower level is accepted only if exactly one object is selected on the higher level (i.e. if you have not already used a wildcard).</li> <li>2. Selections cannot be verified against the target database, since they usually do not exist there. If nothing can be imported, check your selections.</li> <li>3. The selection is valid for all objects in the import file which contain Owner, Network and Job within their <a href="#">key fields</a>.</li> </ol>
<b>Stop after ... errors</b>	Enter the number of errors which can occur before terminating the import process.  Valid range: 1 to 99999.  Default: 5.

Field	Description
or ... warnings	Enter number of warnings which can occur before terminating the import process.  Valid range: 1 to 99999.  Default: 10.

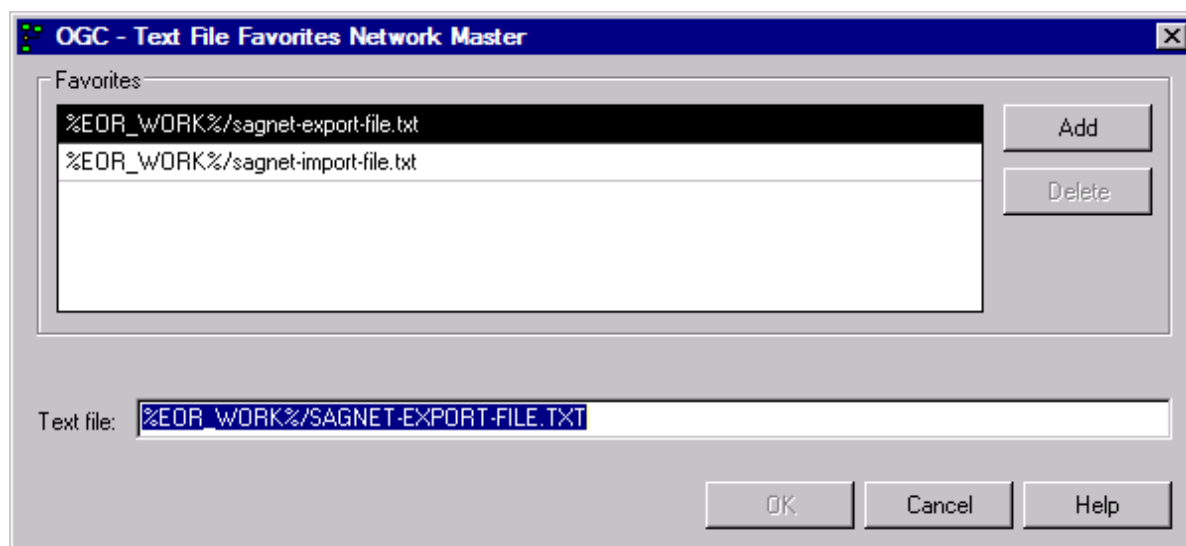
## Using Favorites for Text Files

You can define favorite text files to be used by default for both the import operation and the export operation.

### ➤ To select, add and delete favorite text files

- 1 In the **Import Object** or **Export Objects** window, select **Text file** for **Location** and enter a name (or name range) in the **Text file** field, select a name from the drop-down list box, or leave the field blank.
- 2 Choose **Favorites**.

A **Text File Favorites** dialog like the example below opens:



The name (if entered) in the **Text file** field of the **Import/Export Objects** is contained in the **Text file** field of the dialog.

- 3 To add a favorite file:

In the **Text file** field, enter the name of a text file (maximum is 250 characters) or change the name already entered in the field.

Choose **Add**.

The new file is added to the **Favorites** list.

The **Add** button is deactivated if the maximum of five file names is reached or if the specified name is already contained in the **Favorites** list.

If the maximum number of file names is reached, you must delete an existing file before you can add a new one.

- 4 To select a favorite file:

From the **Favorites** list, select the file you want to use for the current import/export operation.

The file name is copied into the **Text file** field of the dialog.

- 5 To remove favorite files:

In the **Favorites** list, select one or more file names and choose **Delete**.

The selected file is removed from the **Favorites** list.

- 6 Choose **OK** to save your changes or double-click on a file in the **Favorites** list.

(**Cancel** cancels any changes. A confirmation window asks you to save the changes if the **Show confirmation dialog** option is selected in your user profile.)

The changes are saved and the **Text File Favorites** dialog closes.

The file entered in the **Text file** field of the **Text File Favorites** dialog is copied into the **Text file** field of the **Import/Export Objects** and is used for the current import/export operation.

## Handling Import Errors

If at least one error occurs within the object, the whole object is rejected. Errors and warnings are counted for single objects during the import. If the error or warning limit is reached, the whole import is cancelled.

Whenever an object is rejected, it is saved with the prefix **ERR-** and an ascending number (**ERR-0001**, **ERR-0002**, and so on) in the library specified for the import operation. These objects contain the rejected object and the errors which caused the rejection. The error text is written directly above the line which contains the error.



**Note:** You must specify a Natural library name for storing these objects. Otherwise, errors are only protocolled in the job log.

In addition, a header is written to the object informing you about the:

- Number of errors or warnings in this object;
- User who started the import;
- Date and time when the object was rejected.

(See also *Date and Time Formats* in the *User's Guide*.)

You can edit these error objects manually and import them again.

Possible error causes and advice about fixing errors are described in the following section.

### **Error Severity**

There are three levels of error severity:

- **Warnings**

Warnings are displayed, but do not cause the rejection of the object.

- **Errors**

Errors cause rejection of the object but do not cause termination of the import. Import continues with the next object within the file, if the error/warning limit has not been reached.

- **Fatal Errors**

Fatal errors are serious problems which cannot be ignored and cause immediate termination of the import. A fatal error occurs, for example, when it is impossible for the parser to continue at a new point.

### **Causes of Errors - Syntax**

If errors or warnings occur during import, some of the possible causes could be syntax errors, for example:

- A value has invalid format.
- A character in a numeric field.
- A keyword was invalid or non-existing.
- The value of a field exceeds valid length.
- A non-existing object type was specified.

These errors should not occur when importing an unchanged exported object. If you edit the exported object online or create a new object manually, these errors could occur.

### **Causes of Errors - Logical Errors**

If errors or warnings occur during import, some of the possible causes could be logical errors, for example:

- Value has correct syntax but does not meet the requirements of Entire Operations.
- A Job type is specified, which is not allowed in Entire Operations.
- The field has a special range (e.g. only Y or N).
- Adding an object to Entire Operations which already exists.
- Deleting a non-existing object.



## Repeating a Failed Import

### ➤ To repeat a failed import operation

- 1 Correct all erroneous ERR- objects as described in the previous section.
- 2 If the settings from the import window are not suitable, specify the desired **import mode** in the first line of the first error object.
- 3 Start a new import as described in **Importing Objects** with the location NAT (Natural source) for all objects prefixed with ERR-.

## Deleting Single or Multiple Import/Export Requests

### ➤ To delete single or multiple import/export requests

- From the table in the **Import/Export window**, select one or more requests and choose **Delete** from the context menu or press DELETE.

The selected import and/or export requests are removed from the table.

## Exporting Objects

This section explains the export of objects and their key fields.

Exporting an object can invoke the transformation of records from the Entire Operations database into an external format.

The following functions are available to export objects:

- The **Export** function for a selected object node: selects and exports all objects contained in this node.
- The **Export** function in a maintenance window: exports current settings of Entire Operations defaults, message, network activation definitions and import or export operations.

This section provides instructions for all export options.

- [Exporting Node Items](#)
- [Exporting from the General Node](#)
- [Exporting Current Settings](#)
- [Fields and Options: Export Objects Window](#)

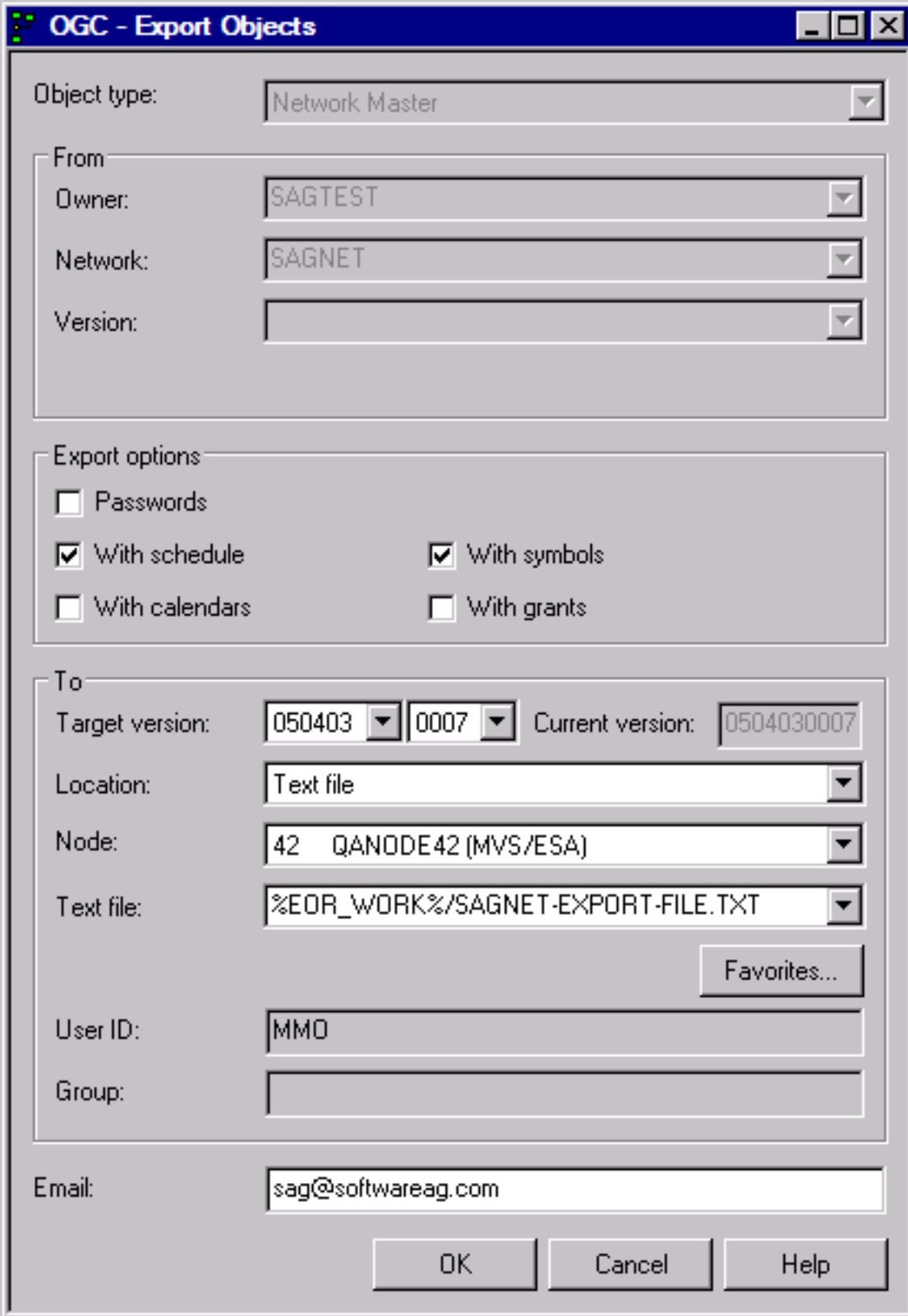
- Object Types to be Exported: Key Fields of the Objects

## Exporting Node Items

### ➤ To export node items

- 1 In the object workspace, select a node or a node instance and choose **Export** from the context menu.

An **Export Objects** window like the example below opens:



The image shows a Windows-style dialog box titled "OGC - Export Objects". It contains several sections for configuring an export operation. The "Object type" is set to "Network Master". The "From" section specifies "Owner: SAGTEST", "Network: SAGNET", and "Version:" is empty. The "Export options" section has checkboxes for "Passwords" (unchecked), "With schedule" (checked), "With calendars" (unchecked), "With symbols" (checked), and "With grants" (unchecked). The "To" section includes "Target version:" with dropdowns for "050403" and "0007", and "Current version:" with a text field containing "0504030007". The "Location:" is "Text file", "Node:" is "42 QANODE42 (MVS/ESA)", and "Text file:" is "%EOR\_WORK%/SAGNET-EXPORT-FILE.TXT". There is a "Favorites..." button. The "User ID:" is "MMO" and "Group:" is empty. The "Email:" field at the bottom contains "sag@softwareag.com". At the bottom right are "OK", "Cancel", and "Help" buttons.

**OGC - Export Objects**

Object type: Network Master

From

Owner: SAGTEST

Network: SAGNET

Version:

Export options

☐ Passwords

☒ With schedule ☒ With symbols

☐ With calendars ☐ With grants

To

Target version: 050403 0007 Current version: 0504030007

Location: Text file

Node: 42 QANODE42 (MVS/ESA)

Text file: %EOR\_WORK%/SAGNET-EXPORT-FILE.TXT

Favorites...

User ID: MMO

Group:

Email: sag@softwareag.com

OK Cancel Help

Depending on the node or node instance selected, the **From** section contains different output fields that indicate the source objects used for the export.

- 2 Select the required options and the location where you want to export the object(s). Depending on the location selected, additional fields appear in the **To** section of the window.

All input fields and options available in the **Export Objects** window section are described in [Fields and Options: Export Objects Window](#).

- 3 When you are finished, choose **OK**.

A user-specific **Import/Export window** opens.

The window contains a list of all processing requests submitted for the objects to be exported (or imported). If you selected a node in [Step 1](#), requests for all objects contained in this node are listed.

The list indicates the current processing status and whether a request has been completed successfully.

The columns and functions available in the **Import/Export** window are described in [Columns: Import/Export Window](#) and [Functions: Import/Export Window](#), respectively.

- 4 Choose **OK**.

All objects listed in the **Import/Export** window are exported in the previously specified format.

If the export process is successful, the data collected for the listed objects is output in the specified export file.

The syntax that applies to the entries in the export file is explained in [Syntax in Import/Export Files and Object Processing Rules](#).

## Exporting from the General Node

### ➤ To export objects from the General node

- 1 In the object workspace, select the **General** metanode and choose **Import/Export** from the context menu.
- 2 In the **Import/Export** window, choose **Add Export**.

(See [Importing Objects](#) for import instructions.)

An **Export Objects window** like the example shown earlier opens.

- 3 Proceed with [Steps 2 to 4](#) in *Exporting Node Items*.

## Exporting Current Settings

### ➤ To export current Entire Operations defaults, message or network activation settings

- 1 In the object workspace, select the **Administration** metanode and choose **Entire Operations Defaults** from the context menu.

(See also *Accessing Default Settings for Entire Operations* in the *Administration* documentation.)

Or:

In the object workspace, select the **Administration** metanode, choose **Messages and Exits** from the context menu and open the tabbed page **Global User Exits**.

(See also *Global Messages and Exits* in the *Administration* documentation.)

Or:

In the object workspace, select the **General** metanode and choose **Show Messages** from the context menu.

(See also *Viewing Mailbox Messages* in the *User's Guide*.)

Or:

In the object workspace, select the **General** metanode, an owner or a network instance and choose **Next Activations** from the context menu.

(See also *Viewing and Maintaining Next Network Activations* in the *User's Guide*.)

Or:

From a maintenance window (for example, **Show Messages and Requests**) choose **Export**.

An **Export Objects window** opens where the type of settings to be exported is indicated in the **Object type** field, for example, **Defaults** or **Mailbox Entry**.

- 2 Proceed with **Steps 2 to 4** in *Exporting Node Items*.

## Fields and Options: Export Objects Window

The fields and options provided in the [Export Objects](#) window are described in the following table.

Field/Option	Description	
From:		
	Depending on the <b>Object type</b> selected, owner, network, network version and job used for the export are displays as output fields in the <b>From</b> section.	
Object type	Object type to be exported.  See also <i>Object Type to be Exported: Key Fields of the Objects</i> .	
...	The remaining <b>From</b> fields differ according to the object type selected.	
To:		
Target Version	Entire Operations version to be used as the target version for the export: see <i>Target and Current Versions</i> .	
Location	Location of the file that contains the export data.  Select either of the following options:	
	Natural source	Export to a Natural text object.  See also the fields <b>Library</b> and <b>Member prefix</b> .
	Text file	Export to a text file. See also <i>Using Favorites for Text Files</i> .
Node	Only for <b>Text file</b> locations.	
	Enter the name of the node through which the specified text file can be accessed. The text file must exist.	
Text file	Only for <b>Text file</b> locations.	
	Enter the name of the text file to be used for the export.	
Favorites	This option button is only available if <b>Text file</b> is selected: see <i>Using Favorites for Text Files</i> .	
User ID	Only for <b>Text file</b> locations.  Enter the default user ID if defined for the specified node.	
Group	Only for <b>Text file</b> locations.	
	Enter the UNIX group or Windows domain (optional) if defined for the specified node.	
Library	Only for <b>Natural source</b> locations.	
	Enter the name of the library that contains the Natural text object used for the export operation.	

Field/Option	Description						
<b>Member prefix</b>	<p>Only for <b>Natural source</b> locations.</p> <p>Enter the prefix (maximum is 5 alphanumeric characters) of the Natural text object(s) that are to store the export data.</p> <p>The prefix is padded with hyphens ( - ) to its maximum length of 5 character. For example, the prefix entry PRE is converted to PRE - -, PREF to PREF - . The prefix is followed by a 3-digit number, for example, PREF-001.</p> <p>One or more text objects with the specified prefix are created depending on the amount of data to be exported. For example: The prefix PREF can comprise text objects with the names PREF-001, PREF-002 and PREF-003.</p>						
<b>Append/New/Replace</b>	<p>Only for <b>Natural source</b> locations.</p> <p>Determine how to handle the export data contained in the Natural text object(s) specified with the prefix in the <b>Member prefix</b> field.</p> <p>Possible option settings are:</p> <table> <tr> <td><b>Append</b></td><td> <p>Select this option to append the data to be exported to the specified text object.</p> <p>Text object with the specified prefix must exist.</p> </td></tr> <tr> <td><b>New</b></td><td> <p>Select this option to save the data in a new text object.</p> <p>If a text object with the specified prefix already exists, an appropriate message is returned.</p> <p>This is the default setting.</p> </td></tr> <tr> <td><b>Replace</b></td><td> <p>Select this option to replace the data in the specified text object.</p> </td></tr> </table>	<b>Append</b>	<p>Select this option to append the data to be exported to the specified text object.</p> <p>Text object with the specified prefix must exist.</p>	<b>New</b>	<p>Select this option to save the data in a new text object.</p> <p>If a text object with the specified prefix already exists, an appropriate message is returned.</p> <p>This is the default setting.</p>	<b>Replace</b>	<p>Select this option to replace the data in the specified text object.</p>
<b>Append</b>	<p>Select this option to append the data to be exported to the specified text object.</p> <p>Text object with the specified prefix must exist.</p>						
<b>New</b>	<p>Select this option to save the data in a new text object.</p> <p>If a text object with the specified prefix already exists, an appropriate message is returned.</p> <p>This is the default setting.</p>						
<b>Replace</b>	<p>Select this option to replace the data in the specified text object.</p>						
<b>Passwords</b>	<p>Only for object types which contain passwords (e.g., password of a protected data set).</p> <p>Possible radio button settings:</p> <table> <tr> <td><i>selected</i></td><td>Export passwords.</td></tr> <tr> <td><i>not selected</i></td><td>Do not export passwords.</td></tr> </table>	<i>selected</i>	Export passwords.	<i>not selected</i>	Do not export passwords.		
<i>selected</i>	Export passwords.						
<i>not selected</i>	Do not export passwords.						
<b>with Schedules</b>	<p>If you also export the schedules, the imported networks will get the same schedule definitions as the exported networks. (They can be modified after the import.)</p> <p>Possible radio button settings:</p> <table> <tr> <td><i>selected</i></td><td>Export schedules (default).</td></tr> <tr> <td><i>not selected</i></td><td>Do not export schedules.</td></tr> </table>	<i>selected</i>	Export schedules (default).	<i>not selected</i>	Do not export schedules.		
<i>selected</i>	Export schedules (default).						
<i>not selected</i>	Do not export schedules.						
<b>with Calendars</b>	<p>If you export object(s) with calendars, all referenced calendars will be exported after objects, each calendar once.</p> <p>Possible radio button settings:</p>						

Field/Option	Description	
	<i>selected</i>	Export calendars.
	<i>not selected</i>	Do not export calendars (default).
<b>with Symbols</b>	If you export object(s) with symbols, all referenced symbol tables will be exported after objects, each symbol table once.	
	Possible radio button settings:	
	<i>selected</i>	Export symbols.
	<i>not selected</i>	Do not export symbols (default).
<b>with Grants</b>	If you export networks, you can determine whether access rights granted to users/owners in the source environment are also exported.	
	Possible radio button settings:	
	<i>selected</i>	Export granted access rights.
	<i>not selected</i>	Do not export granted access rights (default).

### Target and Current Versions

The version in the **Target Version** and **Current Version** fields of the **Export Objects** window have the format *vvrrssffff*, where:

<i>vvrrss</i>	Valid Entire Operations version with leading zeros, for example, 050501 for Entire Operations Version 5.5.1.
<i>ffff</i>	One- to two-digit cumulative fix number (if available) with leading zeros, for example, 0001.

Valid input values for **Target Version** are from 0501010014 to the current (or next) *vvrrssffff* version. The highest allowed value is preset as default.

You can select a version and cumulative fix from the drop-down list boxes.

The **Current Version** read-only field indicates the Entire Operations version installed in your current environment.

### Object Types to be Exported: Key Fields of the Objects

The key fields you must specify for any **Object name** you want to export are described in the following table.

The object types listed in the following table are used in an import or export file. They correspond to the object types (terms in parentheses in the table below) you can select from the **Export Objects** window opened when performing the **Import/Export** function from the **General** node.



Object Type	Key Field 1	Key Field 2	Key Field 3	Key Field 4	Remark
OWNER (Owner)	Owner				This exports all objects which belong to a specific owner.
NETWORK-MASTER (Network Master)	Owner	Network	Version		
NETWORK-VERSION-USAGE (Network Version Usage)	Owner	Network			
JOB-MASTER (Job Master)	Owner	Network	Version	Job	
EOJ-CHECK-MASTER (EOJ Check Master)	Owner	Network	Version	Job	
DESCRIPTION (Description)	Owner	Network	Version	Job	A hyphen ( - ) used instead of a job name exports the description of the network.
SCHEDULE (Schedule)	Owner	Schedule			Schedule = Network
CALENDAR (Calendar)	Owner	Calendar			
TO-ACTIVATE (To Activate)	Owner	Network	Version	Job	Job is optional.
SYMBOL-MASTER (Symbol Master)	Owner	Symbol table			
SYMBOL-VERSION-USAGE (Symbol Version Usage)	Owner	Symbol table			
MAILBOX-DEFINITION (Mailbox Definition)	Mailbox				
MAILBOX-ENTRY (Mailbox Entry)	Mailbox				
NODE-DEFINITION (Node Definition)	Node				
RESOURCE-DEFINITION (Resource Definition)	Resource				

Object Type	Key Field 1	Key Field 2	Key Field 3	Key Field 4	Remark
RESOURCE-PREREQ (Resource Prereq)	Owner	Network	Version	Job	
USER-DEFINITION (User Definition)	User ID				
DEFAULTS (Defaults)	Library				
CONDITION-ACTIVE (Condition Active)	Owner	Network	Version		The export will be performed for all active runs of the condition.
GLOBAL-EXIT (Global Exit)					All global exits will be exported.

## Repeating an Import or Export Operation

---

### ➤ To repeat an import/export operation

- 1 From the table in the **Import/Export window**, select a completed import or export and choose **Repeat**.

An **Import Objects** or **Export Objects** window opens with the properties settings of the previous import or export, respectively.

If required, change the current settings. The fields and options are explained in *Fields and Options: Import Objects Window* and *Fields and Options: Export Objects Window*, respectively.

- 2 Choose **OK**.

The request is added to the table and queued for processing.

The same applies as stated for an initial import or export operation.

## Retention Period for Import/Export Requests from Entire Operations GUI Client

---

Data generated for import and export requests from Entire Operations GUI Client is retained for the number of days specified for active jobs in the **Retention Periods** of the Entire Operations default settings (see *Defaults for Time Ranges* in the *Administration* documentation).

Older import and export requests listed in the **Reporting** window of Entire Operations GUI Client are automatically removed after this period or during the next database cleanup (see also the *Administration* documentation).



# 4

## Syntax in Import/Export Files and Object Processing Rules

---

■ Basic Syntax Rules .....	32
■ Field Definitions .....	33
■ Object Descriptions .....	36
■ Comments .....	36
■ Reserved Keywords .....	36
■ Sub-Objects .....	37
■ Special Considerations for Import .....	38
■ Hierarchical Order for Object Processing .....	41
■ Sample Network .....	43

This section describes the syntax that applies to the entries in the import or export file used when importing or exporting objects. It also describes the rules, restrictions and requirements that apply when defining the objects to be processed.

## Basic Syntax Rules

---

Each Entire Operations logical record is represented by one entry in external format. The entry is enclosed in `OBJECT=object-type` and `END-OBJECT` keywords.

### Example:

```
OBJECT=NETWORK-MASTER
...
END-OBJECT
```

Encloses a network master definition.

After `END-OBJECT`, a comment is written which repeats, like the Natural programming syntax, object type, object name and the lines that were written:

```
END-OBJECT /* JOB-MASTER JOB-XY 48 lines
```

Each field is represented by keyword and value.

### Examples:

```
OWNER=EXAMPLE
SHDESC=This is an example
EST=141030
```

A keyword must be immediately followed by an equal sign (=). Everything after the equal sign (=) until the next keyword is assumed to belong to the field. The equal sign (=) should not appear in the value itself but is accepted anyway.

- Several keywords and fields may appear on one line.
- The sequence of fields within a record is meaningless.
- For numeric fields, a decimal point (.) and comma (,) are accepted as decimal separators during import.

## Field Definitions

This section describes the fields, field formats and abbreviations used in the import/export file.

- [Field Formats](#)
- [Multiple-Value Fields](#)
- [Periodic Groups](#)
- [Field Abbreviations](#)
- [Common Fields](#)

### Field Formats

Format		Description
A	alpha	Alphanumeric value (US-ASCII only).
		Import:
		The value can be enclosed in double quotation marks (" . . "). Consider that double quotation marks at the beginning and end of a value are stripped from the string.
		Examples:
		" ABC " > ABC
		" ABC > ABC
		" " ABC " > " ABC
		Export:
		If the value contains at least one blank or double quotation mark (" ), the value is enclosed in double quotation marks (" . . "). Examples:
N,I,P	numeric	AB C > " AB C "
		AB " C > " AB " C "
		" AB C > " " AB C "
N,I,P	numeric	EBCDIC/ASCII digits.
		Natural Edit Mask using, e.g. ZZZZ9.99 must be a valid input for the Natural mathematical VAL system function. Maximum is 2 decimal digits.
D	date	YYYYMMDD
T	time	HHISS (Hours 0-24) (Natural type T, only time used)
DT	date and time	YYYYMMDDHHIIS (Hours 0-24) (Natural type T, complete timestamp)
L	logical value	Logical value of Y/yes/true or N/no/false (in upper or lower case).  In the database, it is represented by A1 containing Y or N.

## Multiple-Value Fields

Keywords, which correspond to multiple-value fields, may appear several times in the external format record.

### Example:

```
EX-DATE=20011120 EX-DATE=20011220
```

## Periodic Groups

Periodic group fields must follow each other for one entity.

A group identifier must precede a group entry.

### Example:

```
IN-CONDITION COND=COND1 COND-REF=RUN COND-EXIST=Y  
IN-CONDITION COND=COND2 COND-REF=DAT COND-EXIST=N
```

Defines two subsequent input conditions.

On input, the internal group counter is incremented if the group identifier appears.

For groups and multiple-value fields, it is possible that other fields are defined between them, since the import processing will keep track of the highest used index.

## Field Abbreviations

The following abbreviations are used in the descriptions of the Entire Operations objects:

Value	Description
+	Required fields.
D	Contains date only.
DT	Contains date and time.
K	Key fields required for identification.
M	Multiple-value field.
PG	Periodic group identifier.
PI	Part of periodic group.
T	Contains time only.



## Common Fields

The following names can be used in compound names. Their format is always the same:

Field	Format	Explanation
DBID	N5	Adabas database ID.
FNR	N5	Adabas file number.
DBENV	A10	Database environment (for future use).
OWNER	A10	
NETWORK	A10	<b>Caution:</b> Alphanumerical characters only. In addition, the first character must be a letter. Note that otherwise an import cannot be performed due to not passing a syntax check resulting in error message EOR0060 or EOR1032. See also <a href="#">Field Formats</a>
NETWORK-VERSION	A10	Network version.  Field is case-sensitive.
JOB	A10	
RUN	N5	Run number.
JOB-ID	A10	Job identifier.
SCHEDULE	A10	
CALENDAR	A10	
USER	A20	<b>Note:</b> For mainframe Entire System Server nodes, the first 8 bytes are used only.
GROUP	A20	UNIX: User group.  Windows: Domain.
SYMBOL-TABLE	A10	
SYMTAB-VERSION	A10	Symbol table version.  Field is case-sensitive.
SYMBOL	A40	Referenced by the fields <a href="#">IN-SUFFIX-SYMBOL</a> , <a href="#">IN-SY-SYMBOL</a> and <a href="#">MPA-SUFFIX-SYMBOL</a> .
CONDITION	A20	
COND-REFERENCE	A8	Condition reference.
MAILBOX	A10	
NODE	N5	If the node is defined numerically, or if the node short name does not contain a symbol.
	A5	If the node definition contains a symbol.
EXITLIB	A8	User exit library.
USEREXIT	A8	User exit name.

## Object Descriptions

---

Text that describes an object is imported and exported as **OBJECT=DESCRIPTION**: see the section *Object Specification* for details.

## Comments

---

A comment line begins with an asterisk (\*) or the string `/*` followed by a blank. A comment line need not contain text, for example, if used to structure source code.

A comment added in a source-code line, begins with the string `/*` (enclosed in blanks).

Examples:

```
* This is a comment line.  
/* This is a comment line as well as the empty line below.  
*  
KEYWORD2=value2 /* This is a comment added to a code line.
```

## Reserved Keywords

---

Reserved keywords can appear in all objects:

Keyword	Description	
OBJECT	Beginning of an object.	
END-OBJECT	End of an object.	
MODE	Processing mode (within or outside of object). Possible values:	
	ADD	Add object (default).
	CHECK	Check syntax of object.
	DELETE	Delete object.
	UPDATE	Modify object.
	REPLACE	Replace object or add one if it does not exist.

## Sub-Objects

- [Modification Information](#)
- [Message Recipient](#)
- [BS2000 Job Variable Definition](#)

These sub-objects are referenced in the description of several objects.

Just include them there with the following syntax:

### Modification Information

Field	Format
MOD-USER	A8
MOD-TIME	T (DT)
CREATION-TIME	T (DT)

If not otherwise specified, the modification info is part of every object.

### Message Recipient

	Field	Format	Remark
PG	MSG-RECEIVER		Message recipient (receiver). Max. occurrence = 8.
PI	MSG-RCV-TYPE	A1	U = User.
PI	MSG-RCV-NAME	A10	
	MSG-RCV-PROCESSOR	A10	
	MSG-RCV-NODE	<a href="#">common</a>	

Adding single entries is allowed. Superdescriptor is unique.

## BS2000 Job Variable Definition

	Field	Format	Remark
xx-	JV-NAME	A54	
xx-	JV-PASSWORD	A8	Hexadecimal printable.
xx-	JV-SUB-POSITION	N3	
xx-	JV-SUB-LENGTH	N3	
xx-	JV-SUB-FORMAT	A1	
xx-	JV-COMPARE-OP	A2	Comparison operator.
xx-	JV-COMP-VALUE	A100	

## Special Considerations for Import

---

This section covers the following topics:

- [Keyword and Field Handling](#)
- [Import File Defaults](#)
- [Common Import Restrictions](#)

### Keyword and Field Handling

- For End-of-Job checks `ADD` and `UPDATE` mode are the same. Only when an End-of-Job check with same data already exists is a warning issued.
- When updating periodic groups or multiple-value fields, all fields which build the periodic identifier of the new group are compared with all entries of the group in the database. If no entry with the same identifier exists, the new group is added; otherwise, the existing group is modified.
- No value field should contain any keyword followed by an equal sign (*keyword=*) or a periodic group identifier. This would cause an error because the parser would assume that the value is a keyword. This also applies for object description texts (`T=`) fields. For example:

```
OBJECT=JOB-MASTER
JOB=NETWORK=
....
```

would cause an error because `NETWORK` is a keyword.

- The parser also detects, if a field occurred more than once within a periodic group. For example:

```
...
PG
PGFIELD-XY=ONCE    PG-FIELD-XY=TWICE
```

would cause an error because periodic group field PGFIELD-XY occurred twice.

- The fields MOD-USER and MOD-TIME are always accepted but replaced with MOD-USER=IMPORT and MOD-TIME=*time at which import was performed*.
- The keyword MODE can occur anywhere in the file.
- The keyword OBJECT must be immediately followed by an equal sign (=) and the name of the object type.
- No record within the file should exceed 240 bytes.
- Numeric values are accepted with up to 2 decimals. Using more digits is no error. For example:

```
...
NUM=1234.5678
...
```

returns 1234.56 for field NUM.

- For all periodic groups or multiple-value fields the array limits of SYSEOR must be respected.
- If a network is to be imported with MODE=ADD and the owner of this network is not yet included in the GRANT field, he/she is automatically added to the authorized persons.
- The parser always registers, if a keyword, which does not belong to a multiple-value field or periodic group, occurred more than once within the object. If so, it is an error.
- During an import with delete requests, the Entire Operations Monitor deletes networks and jobs in asynchronous mode during. Since network deletion includes all its jobs, deletion of the network and the jobs can therefore be delayed. As a result, jobs to be deleted can be reported as already deleted or not existing. Consider this behavior when determining the value for the message limit using the [Stop after ... errors](#) option.
- If you are importing JCL without specifying a member name, a new member name is generated. The name has the prefix JCL- and a unique number as suffix (e.g., JCL-0011). (Import mode DELETE for object type JCL is not currently implemented.)
- During the import process every attempt to import an object is logged in the SYSEOR log. This can be analyzed with the Entire Operations online system.

## Import File Defaults

(optional)

```
■ OBJECT=FILE-DEFAULTS
  OWNER=...
  NETWORK=...
  MODE=...
  EXECUTION-NODE=...
  JCL-NODE=...
  JCL-NAT-LIB=...
  ...
```

- *keyword*=DEFAULT - resets to the default setting.
- Options are valid until the next modification in sequential order.
- May appear several times in one file.
- The import file defaults are valid for one complete import file, unless something different is specified for a single object.

## Common Import Restrictions

This section describes the common restrictions that apply when specifying the objects to be imported.

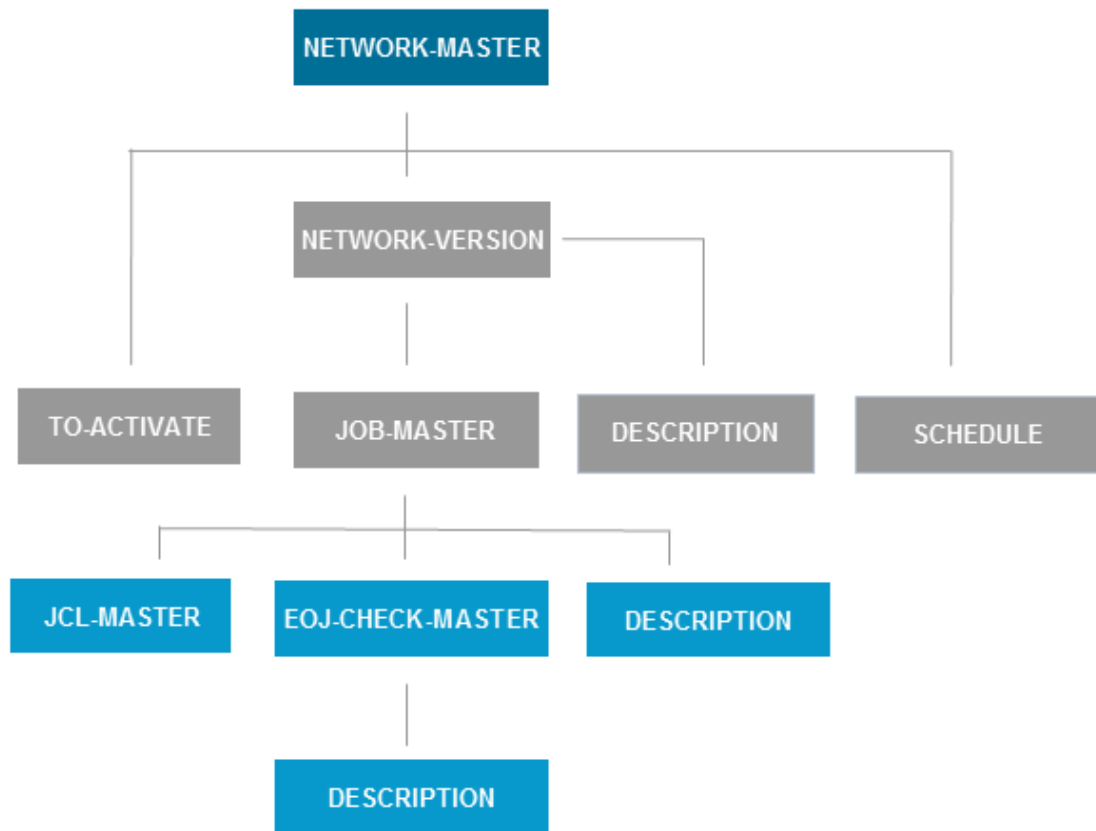
The following is checked during an import function to the Entire Operations system file:

- If the object already exists in the target, it may be rejected, depending on the import mode.
- Key fields are required in any case.
- Required fields are necessary for ADD.
- Only complete objects are imported.
- All required fields must be supplied.
- For multiple-value fields and periodic groups, SYSEOR-wide array limits must not be exceeded.
- Invalid representations of numbers, date and time fields, etc. are rejected. This causes the whole object to be rejected.
- Objects with invalid keywords are rejected.
- Set the Natural profile parameter DC to a hyphen (-) in your Natural environment.

## Hierarchical Order for Object Processing

All objects that are subordinate to another object (hierarchical owner) are processed when their hierarchical owner is selected for processing.

The tree below indicates the hierarchical structure of objects within a job network:



### ■ Export

All objects in a hierarchical order below the object selected for export are also exported. For example: the export of an object **JOB-MASTER** results in additional export of all dependent objects: **JCL-MASTER**, **EOJ-CHECK-MASTER** and **DESCRIPTION**.

## ■ Import

Some objects can be added only if their hierarchical owner already exists in the target system file. The dependencies are listed in the individual object descriptions (OBJECT=) provided in this section.

If the hierarchical owner is missing, all attempts to load dependent objects will fail.

For example: an object JOB-MASTER can be added only if the owning NETWORK-MASTER already exists. This is because objects without a hierarchical owner cannot be accessed any more in the Entire Operations online system.

### ImportExport/Import of standalone Objects

Exporting and importing DEFAULTS, CALENDAR, SYMBOL-MASTER, MAILBOX- DEFINITION, MAILBOX-ENTRY, NODE-DEFINITION, RESOURCE-DEFINITION, USER-DEFINITION and CONDITON-ACTIVE does not involve any other object. No hierarchical structure must be considered.

The following table lists export/import objects and their hierarchical owner (if any):

Object	Abbreviation	Hierarchical Owner
NETWORK-MASTER	NWM or NM	none
NETWORK-VERSION	NV	NETWORK-MASTER
JOB-MASTER	JBM or JM	NETWORK-VERSION
JCL-MASTER	JCM	JOB-MASTER
EOJ-CHECK-MASTER	EOJ or EM	JOB-MASTER
DESCRIPTION	DSC	NETWORK-VERSION or JOB-MASTER or EOJ-CHECK-MASTER
SCHEDULE	SCD or SC	none
CALENDAR	CAL or CA	none
TO-ACTIVATE	TOA or TA	NETWORK-MASTER
Symbol table version (virtual object)	n/a	none
SYMBOL-MASTER	SYM or SM	Symbol table version (virtual object)
MAILBOX-DEFINITION	MXD	none
MAILBOX-ENTRY	MXE	none
NODE-DEFINITION	NOD	none
RESOURCE-DEFINITION	RSD	none
USER-DEFINITION	USD	none
DEFAULTS	DEF	none
CONDITION-ACTIVE	COA or CO	none



## Sample Network

The following is an example of an export file in the external format. It contains data definitions that demonstrate the job flow within the network E60-FL0W. It can serve as a sample for exporting a network.

```

*
OBJECT=NETWORK-MASTER
* DATE: 20170130 TIME: 11:27:24 USER: NATQA5
OWNER=EXAMPLE
NETWORK=E60-FL0W
SHDESC=Job Flow MVS
LAST-RUN=60
LAST-ACT=20161025134522
LAST-SCH-XT=20170130000022
EXTRACTED-UNTIL=20170130235959
LAST-SUBMIT-RUN=52
DEF-EX-NODE=148
DEF-JCL-NODE=148
DEF-JCL-LOCATION=NAT
DEF-FILE=SYSEORU
DEF-SYMBOL-TABLE=EXAM-ST1
SYMTAB-ACTIVATION-MOD=X
TIMEFRAME
TF-EARLIEST-START=100000 TF-LATEST-START=150000
TF-DEADLINE=170000
SCHEDULE-RANGE SR-OWNER=EXAMPLE SR-SCHEDULE=E60-FL0W
GRANT GRANT-TYPE=0 GRANT-NAME=SYSDBA GRANT-FLAGS=0
GRANT GRANT-TYPE=0 GRANT-NAME=EXAMPLE GRANT-FLAGS=0
DEF-EJA-ERROR-MODE=N
MOD-USER=SYSDBA MOD-TIME=19960806135236
END-OBJECT /* NETWORK-MASTER E60-FL0W ( 41 LINES )
*
OBJECT=DESCRIPTION
* DATE: 20170130 TIME: 11:27:24 USER: NATQA5
TYPE=NETWORK
OWNER=EXAMPLE
NETWORK=E60-FL0W
NETWORK-VERSION=
MOD-USER=IMPORT
MOD-DATE=19930611171918
T=Network E60-FL0W
T=-----
T=This Network is just an example of 'standard' job flow for
T=a bigger amount of jobs.
T=
T=The jobs are all defined with the Dynamic JCL Facility to allow
T=an easy migration to another environment.
T=No special end-of-job handling is defined, so that the ENTIRE

```

```

T=OPERATIONS global defaults will be used.
T=
T=Flow Diagram
T=-----
T=
T=JOB-01
T=+-----+-----+
T=V                V
T=JOB-012          JOB-019
T=V                |
T=JOB-013          | |
T=V                | |
T=JOB-014          | |
T=V                | |
T=JOB-015          | |
T=+-----+-----+
T=JOB-02
T=V
T=JOB-03
T=V
T=JOB-04
T=V
T=JOB-05
T=V
T=JOB-06
T=a bigger amount of jobs.
T=
T=The jobs are all defined with the Dynamic JCL Facility to allow
T=an easy migration to another environment.
T=No special end-of-job handling is defined, so that the ENTIRE
T=OPERATIONS global defaults will be used.
T=
T=Flow Diagram
T=-----
T=
T=JOB-01
T=+-----+-----+
T=V                V
T=JOB-012          JOB-019
T=V                |
T=JOB-013          | |
T=V                | |
T=JOB-014          | |
T=V                | |
T=JOB-015          | |
T=+-----+-----+
T=JOB-02
T=V
T=JOB-03
T=V
T=JOB-04
T=V

```

```

END-OBJECT /* DESCRIPTION E60-FLOW ( 69 LINES )
*
OBJECT=SCHEDULE
* DATE: 20170130 TIME: 11:27:24 USER: NATQA5
OWNER=EXAMPLE
SCHEDULE-NAME=E60-FLOW
SHDESC=Daily Schedule for E60-FLOW network
W-DATE W-DAY=2
W-DATE W-DAY=4
W-DATE W-DAY=6
MOD-USER=NATQA5 MOD-TIME=20150328180958 CREATION-TIME=20150326122620
END-OBJECT /* SCHEDULE E60-FLOW ( 10 LINES )
*
OBJECT=JOB-MASTER
* DATE: 20170130 TIME: 11:27:24 USER: NATQA5
OWNER=EXAMPLE
NETWORK=E60-FLOW
JOB=JOB-01
SHDESC=where it all starts
JOB-TYPE=JOB
ESC-ACTIVATION=@ ESC-SUBMIT=$
SYMBOL-TABLE=EXAM-ST1
JCL-LOCATION=MAC
JCL-FILE=SYSEORU
JCL-MEMBER=E60-M02
JCL-NODE=148 EXECUTION-NODE=148
SUBMIT-USERID=GFR
EARLIEST-START=131400
LATEST-START=230000
DEADLINE=233000
SUBNET-ACT-MODE= SUBNET-TIME-MODE=0
MOD-USER=SYSDBA MOD-TIME=20140110124841
END-OBJECT /* JOB-MASTER JOB-01 ( 40 LINES )
*
OBJECT=EOJ-CHECK-MASTER
* DATE: 20170130 TIME: 11:27:24 USER: NATQA5
OWNER=EXAMPLE
NETWORK=E60-FLOW
JOB=JOB-01
EVENT-NAME=JOB-OK
OUT-CONDITION-P
OUT-CONDITION="E60-JOB1-0" OUT-COND-REFERENCE="RUN" OUT-COND-DELETE-ADD=A
MOD-USER=IMPORT MOD-TIME=20140110124841
END-OBJECT /* EOJ-CHECK-MASTER JOB-01 ( 10 LINES )
*
OBJECT=EOJ-CHECK-MASTER
* DATE: 20170130 TIME: 11:27:24 USER: NATQA5
OWNER=EXAMPLE
NETWORK=E60-FLOW
JOB=JOB-01
EVENT-NAME=JOB-NOTOK
MOD-USER=IMPORT MOD-TIME=20140110124841

```

```
END-OBJECT /* EOJ-CHECK-MASTER JOB-01 ( 8 LINES )
*
OBJECT=EOJ-CHECK-MASTER
* DATE: 20170130 TIME: 11:27:24 USER: NATQA5
OWNER=EXAMPLE
NETWORK=E60-FLOW
JOB=JOB-01
EVENT-NAME=STEP01
CODE=C
VALUE=0004
OP=<=
OK=OK
MOD-USER=IMPORT MOD-TIME=20140110124841
END-OBJECT /* EOJ-CHECK-MASTER JOB-01 ( 12 LINES )
*
OBJECT=EOJ-CHECK-MASTER
* DATE: 20170130 TIME: 11:27:24 USER: NATQA5
OWNER=EXAMPLE
NETWORK=E60-FLOW
JOB=JOB-01
EVENT-NAME=ANYPSTEP
CODE=C
VALUE=0008
OP=>=
OK=NO
MOD-USER=IMPORT MOD-TIME=20140110124841
END-OBJECT /* EOJ-CHECK-MASTER JOB-01 ( 12 LINES )
*
OBJECT=EOJ-CHECK-MASTER
* DATE: 20170130 TIME: 11:27:24 USER: NATQA5
OWNER=EXAMPLE
NETWORK=E60-FLOW
JOB=JOB-01
EVENT-NAME=INVALID RESPONSE-CODE
CODE=STR
OK=NO
MOD-USER=IMPORT MOD-TIME=20140110124841
END-OBJECT /* EOJ-CHECK-MASTER JOB-01 ( 10 LINES )
*
OBJECT=JOB-MASTER
* DATE: 20170130 TIME: 11:27:24 USER: NATQA5
OWNER=EXAMPLE
NETWORK=E60-FLOW
JOB=JOB-015
SHDESC=depending on JOB-014
JOB-TYPE=DUM
ESC-ACTIVATION=@ ESC-SUBMIT=$
SYMBOL-TABLE=EXAM-ST1
EXECUTION-NODE=148
SUBMIT-USERID=GFR
SUBNET-ACT-MODE= SUBNET-TIME-MODE=0
MOD-USER=SYSDBA MOD-TIME=20140110124841
```

```

IN-COND-DEF
IN-CONDITION="E60-J014-0" IN-REFERENCE="RUN"
IN-EXIST=Y
END-OBJECT /* JOB-MASTER JOB-015 ( 37 LINES )
*
OBJECT=EOJ-CHECK-MASTER
* DATE: 20170130 TIME: 11:27:24 USER: NATQA5
OWNER=EXAMPLE
NETWORK=E60-FLOW
JOB=JOB-015
EVENT-NAME=JOB-OK
OUT-CONDITION-P
OUT-CONDITION="E60-J014-0" OUT-COND-REFERENCE="RUN" OUT-COND-DELETE-ADD=D
OUT-CONDITION-P
OUT-CONDITION="E60-J015-0" OUT-COND-REFERENCE="RUN" OUT-COND-DELETE-ADD=A
MOD-USER=IMPORT MOD-TIME=20140110124841
END-OBJECT /* EOJ-CHECK-MASTER JOB-015 ( 12 LINES )
*
OBJECT=JOB-MASTER
* DATE: 20170130 TIME: 11:27:25 USER: NATQA5
OWNER=EXAMPLE
NETWORK=E60-FLOW
JOB=JOB-02
SHDESC=dep. JOB-15, JOB-19
JOB-TYPE=JOB
ESC-ACTIVATION=@ ESC-SUBMIT=$
SYMBOL-TABLE=EXAM-ST1
JCL-LOCATION=MAC
JCL-FILE=SYSEORU
JCL-MEMBER=E60-M02
JCL-NODE=148 EXECUTION-NODE=148
SUBMIT-USERID=GFR
EARLIEST-START=100500
ELAPSED-TIME=000102
SUBNET-ACT-MODE= SUBNET-TIME-MODE=0
MOD-USER=SYSDBA MOD-TIME=20140110124841
IN-COND-DEF
IN-CONDITION="E60-J015-0" IN-REFERENCE="RUN"
IN-EXIST=Y
IN-COND-DEF
IN-CONDITION="E60-J019-0" IN-REFERENCE="RUN"
IN-EXIST=Y
END-OBJECT /* JOB-MASTER JOB-02 ( 44 LINES )
*
OBJECT=EOJ-CHECK-MASTER
* DATE: 20170130 TIME: 11:27:25 USER: NATQA5
OWNER=EXAMPLE
NETWORK=E60-FLOW
JOB=JOB-02
EVENT-NAME=JOB-OK
OUT-CONDITION-P
OUT-CONDITION="E60-JOB2-01" OUT-COND-REFERENCE="RUN" OUT-COND-DELETE-ADD=A

```

```

OUT-CONDITION-P
OUT-CONDITION="E60-JOB2-02" OUT-COND-REFERENCE="RUN" OUT-COND-DELETE-ADD=A
OUT-CONDITION-P
OUT-CONDITION="E60-J015-0" OUT-COND-REFERENCE="RUN" OUT-COND-DELETE-ADD=D
OUT-CONDITION-P
OUT-CONDITION="E60-J019-0" OUT-COND-REFERENCE="RUN" OUT-COND-DELETE-ADD=D
OUT-CONDITION-P
OUT-CONDITION="E60-JOB1-0" OUT-COND-REFERENCE="RUN" OUT-COND-DELETE-ADD=D
MOD-USER=IMPORT MOD-TIME=20140110124841
END-OBJECT /* EOJ-CHECK-MASTER JOB-02 ( 18 LINES )
*
OBJECT=EOJ-CHECK-MASTER
* DATE: 20170130 TIME: 11:27:25 USER: NATQA5
OWNER=EXAMPLE
NETWORK=E60-FLOW
JOB=JOB-02
EVENT-NAME=JOB-NOTOK
MOD-USER=IMPORT MOD-TIME=20140110124841
END-OBJECT /* EOJ-CHECK-MASTER JOB-02 ( 8 LINES )
*
OBJECT=EOJ-CHECK-MASTER
* DATE: 20170130 TIME: 11:27:25 USER: NATQA5
OWNER=EXAMPLE
NETWORK=E60-FLOW
JOB=JOB-02
EVENT-NAME=STEP1
CODE=C
VALUE=0000
OP==
OK=OK
MOD-USER=IMPORT MOD-TIME=20140110124841
END-OBJECT /* EOJ-CHECK-MASTER JOB-02 ( 12 LINES )
*
OBJECT=JOB-MASTER
* DATE: 20170130 TIME: 11:27:25 USER: NATQA5
OWNER=EXAMPLE
NETWORK=E60-FLOW
JOB=JOB-012
SHDESC=depending on Job-01
JOB-TYPE=JOB
ESC-ACTIVATION=@ ESC-SUBMIT=$
SYMBOL-TABLE=EXAM-ST1
JCL-LOCATION=MAC
JCL-FILE=SYSEORU
JCL-MEMBER=E60-M01
JCL-NODE=148 EXECUTION-NODE=148
SUBMIT-USERID=GFR
SUBNET-ACT-MODE= SUBNET-TIME-MODE=0
MOD-USER=SYSDBA MOD-TIME=20140110124841
IN-COND-DEF
IN-CONDITION="E60-JOB1-0" IN-REFERENCE="RUN"
IN-EXIST=Y

```

```

END-OBJECT /* JOB-MASTER JOB-012 ( 40 LINES )
*
OBJECT=EOJ-CHECK-MASTER
* DATE: 20170130 TIME: 11:27:25 USER: NATQA5
OWNER=EXAMPLE
NETWORK=E60-FLOW
JOB=JOB-012
EVENT-NAME=JOB-OK
OUT-CONDITION-P
OUT-CONDITION="E60-J012-0" OUT-COND-REFERENCE="RUN" OUT-COND-DELETE-ADD=A
MOD-USER=IMPORT MOD-TIME=20140110124841
END-OBJECT /* EOJ-CHECK-MASTER JOB-012 ( 10 LINES )
*
OBJECT=EOJ-CHECK-MASTER
* DATE: 20170130 TIME: 11:27:25 USER: NATQA5
OWNER=EXAMPLE
NETWORK=E60-FLOW
JOB=JOB-012
EVENT-NAME=JOB-NOTOK
MOD-USER=IMPORT MOD-TIME=20140110124841
END-OBJECT /* EOJ-CHECK-MASTER JOB-012 ( 8 LINES )
*
OBJECT=DESCRIPTION
* DATE: 20170130 TIME: 11:27:25 USER: NATQA5
TYPE=JOB
OWNER=EXAMPLE
NETWORK=E60-FLOW
NETWORK-VERSION=
JOB=JOB-012
MOD-USER=IMPORT
MOD-DATE=19930611171935
T=Job JOB-MAC
T=-----
T=JCL is generated with dynamic JCL generation.
END-OBJECT /* DESCRIPTION JOB-012 ( 13 LINES )
*
OBJECT=JOB-MASTER
* DATE: 20170130 TIME: 11:27:25 USER: NATQA5
OWNER=EXAMPLE
NETWORK=E60-FLOW
JOB=JOB-013
SHDESC=depending on JOB-012
JOB-TYPE=JOB
ESC-ACTIVATION=@ ESC-SUBMIT=$
SYMBOL-TABLE=EXAM-ST1
JCL-LOCATION=MAC
JCL-FILE=SYSEORU
JCL-MEMBER=E60-M01
JCL-NODE=148 EXECUTION-NODE=148
SUBMIT-USERID=GFR
DAT-TARGET-MEMBER-TYPE=00
LOG-SYSLST=N

```

```
BS2000-SYSOUT-SHARE=N
SUBNET-ACT-MODE= SUBNET-TIME-MODE=0
MOD-USER=NATQA5 MOD-TIME=20141030180343
IN-COND-DEF
IN-CONDITION="E60-J012-0" IN-REFERENCE="RUN"
IN-EXIST=Y IN-EXCLUSIVE=N IN-DESTRUCTIVE=N
IN-ACTMODE=N
END-OBJECT /* JOB-MASTER JOB-013 ( 44 LINES )
*
OBJECT=EOJ-CHECK-MASTER
* DATE: 20170130 TIME: 11:27:25 USER: NATQA5
OWNER=EXAMPLE
NETWORK=E60-FLOW
JOB=JOB-013
EVENT-NAME=JOB-OK
OUT-CONDITION-P
OUT-CONDITION="E60-J013-0" OUT-COND-REFERENCE="RUN" OUT-COND-DELETE-ADD=A
OUT-CONDITION-P
OUT-CONDITION="E60-J012-0" OUT-COND-REFERENCE="RUN" OUT-COND-DELETE-ADD=D
MOD-USER=IMPORT MOD-TIME=20140110124841
END-OBJECT /* EOJ-CHECK-MASTER JOB-013 ( 12 LINES )
*
OBJECT=JOB-MASTER
* DATE: 20170130 TIME: 11:27:25 USER: NATQA5
OWNER=EXAMPLE
NETWORK=E60-FLOW
JOB=JOB-03
SHDESC=depending on JOB-02
JOB-TYPE=NAT
ESC-ACTIVATION=@ ESC-SUBMIT=$
SYMBOL-TABLE=EXAM-ST1
JCL-LOCATION=NAT
JCL-FILE=SYSEORU
JCL-MEMBER=E60-P01
JCL-NODE=148 EXECUTION-NODE=148
SUBMIT-USERID=GFR
SUBNET-ACT-MODE= SUBNET-TIME-MODE=0
MOD-USER=SYSDBA MOD-TIME=20140110124841
IN-COND-DEF
IN-CONDITION="E60-JOB2-01" IN-REFERENCE="RUN"
IN-EXIST=Y
END-OBJECT /* JOB-MASTER JOB-03 ( 40 LINES )
*
OBJECT=EOJ-CHECK-MASTER
* DATE: 20170130 TIME: 11:27:25 USER: NATQA5
OWNER=EXAMPLE
NETWORK=E60-FLOW
JOB=JOB-03
EVENT-NAME=JOB-OK
OUT-CONDITION-P
OUT-CONDITION="E60-JOB3-0" OUT-COND-REFERENCE="RUN" OUT-COND-DELETE-ADD=A
OUT-CONDITION-P
```



```

OUT-CONDITION="E60-JOB2-01" OUT-COND-REFERENCE="RUN" OUT-COND-DELETE-ADD=D
OUT-CONDITION-P
OUT-CONDITION="E60-JOB2-02" OUT-COND-REFERENCE="RUN" OUT-COND-DELETE-ADD=D
MOD-USER=IMPORT MOD-TIME=20140110124841
END-OBJECT /* EOJ-CHECK-MASTER JOB-03 ( 14 LINES )
*
OBJECT=JOB-MASTER
* DATE: 20170130 TIME: 11:27:25 USER: NATQA5
OWNER=EXAMPLE
NETWORK=E60-FLOW
JOB=JOB-04
SHDESC=depending on JOB-03
JOB-TYPE=JOB
ESC-ACTIVATION=@ ESC-SUBMIT=$
SYMBOL-TABLE=EXAM-ST1
JCL-LOCATION=MAC
JCL-FILE=SYSEORU
JCL-MEMBER=E60-M01
JCL-NODE=148 EXECUTION-NODE=148
SUBMIT-USERID=GFR
SUBNET-ACT-MODE= SUBNET-TIME-MODE=0
MOD-USER=SYSDBA MOD-TIME=20140110124841
IN-COND-DEF
IN-CONDITION="E60-JOB3-0" IN-REFERENCE="RUN"
IN-EXIST=Y
END-OBJECT /* JOB-MASTER JOB-04 ( 40 LINES )
*
OBJECT=EOJ-CHECK-MASTER
* DATE: 20170130 TIME: 11:27:25 USER: NATQA5
OWNER=EXAMPLE
NETWORK=E60-FLOW
JOB=JOB-04
EVENT-NAME=JOB-OK
OUT-CONDITION-P
OUT-CONDITION="E60-JOB4-0" OUT-COND-REFERENCE="RUN" OUT-COND-DELETE-ADD=A
OUT-CONDITION-P
OUT-CONDITION="E60-JOB3-0" OUT-COND-REFERENCE="RUN" OUT-COND-DELETE-ADD=D
MOD-USER=IMPORT MOD-TIME=20140110124841
END-OBJECT /* EOJ-CHECK-MASTER JOB-04 ( 12 LINES )
*
OBJECT=JOB-MASTER
* DATE: 20170130 TIME: 11:27:25 USER: NATQA5
OWNER=EXAMPLE
NETWORK=E60-FLOW
JOB=JOB-05
SHDESC=depending on JOB-04
JOB-TYPE=DUM
ESC-ACTIVATION=@ ESC-SUBMIT=$
SYMBOL-TABLE=EXAM-ST1
EXECUTION-NODE=148
SUBMIT-USERID=GFR
SUBNET-ACT-MODE= SUBNET-TIME-MODE=0

```

```
MOD-USER=SYSDBA MOD-TIME=20140110124841
IN-COND-DEF
IN-CONDITION="E60-JOB4-0" IN-REFERENCE="RUN"
IN-EXIST=Y
END-OBJECT /* JOB-MASTER JOB-05 ( 37 LINES )
*
OBJECT=EOJ-CHECK-MASTER
* DATE: 20170130 TIME: 11:27:26 USER: NATQA5
OWNER=EXAMPLE
NETWORK=E60-FLOW
JOB=JOB-05
EVENT-NAME=JOB-OK
OUT-CONDITION-P
OUT-CONDITION="E60-JOB3-0" OUT-COND-REFERENCE="RUN" OUT-COND-DELETE-ADD=D
OUT-CONDITION-P
OUT-CONDITION="E60-JOB5-0" OUT-COND-REFERENCE="RUN" OUT-COND-DELETE-ADD=A
OUT-CONDITION-P
OUT-CONDITION="E60-JOB4-0" OUT-COND-REFERENCE="RUN" OUT-COND-DELETE-ADD=D
MOD-USER=IMPORT MOD-TIME=20140110124841
END-OBJECT /* EOJ-CHECK-MASTER JOB-05 ( 14 LINES )
*
OBJECT=JOB-MASTER
* DATE: 20170130 TIME: 11:27:26 USER: NATQA5
OWNER=EXAMPLE
NETWORK=E60-FLOW
JOB=JOB-06
SHDESC=where it all ends
JOB-TYPE=JOB
ESC-ACTIVATION=@ ESC-SUBMIT=$
SYMBOL-TABLE=EXAM-ST1
JCL-LOCATION=MAC
JCL-FILE=SYSEORU
JCL-MEMBER=E60-M02
JCL-NODE=148 EXECUTION-NODE=148
SUBMIT-USERID=GFR
EARLIEST-START=103000
LOG-SYSLST=N
BS2000-SYSOUT-SHARE=N
SUBNET-ACT-MODE= SUBNET-TIME-MODE=0
MOD-USER=NATQA5 MOD-TIME=20151102160016
IN-COND-DEF
IN-CONDITION="E60-JOB5-0" IN-REFERENCE="RUN"
IN-EXIST=Y
END-OBJECT /* JOB-MASTER JOB-06 ( 43 LINES )
*
OBJECT=EOJ-CHECK-MASTER
* DATE: 20170130 TIME: 11:27:26 USER: NATQA5
OWNER=EXAMPLE
NETWORK=E60-FLOW
JOB=JOB-06
EVENT-NAME=JOB-OK
OUT-CONDITION-P
```

```

OUT-CONDITION="E60-JOB5-0" OUT-COND-REFERENCE="RUN" OUT-COND-DELETE-ADD=D
MOD-USER=IMPORT MOD-TIME=20140110124841
END-OBJECT /* EOJ-CHECK-MASTER JOB-06 ( 10 LINES )
*
OBJECT=JOB-MASTER
* DATE: 20170130 TIME: 11:27:26 USER: NATQA5
OWNER=EXAMPLE
NETWORK=E60-FLOW
JOB=JOB-014
SHDESC=depending on JOB-013
JOB-TYPE=JOB
ESC-ACTIVATION=@ ESC-SUBMIT=$
SYMBOL-TABLE=EXAM-ST1
JCL-LOCATION=MAC
JCL-FILE=SYSEORU
JCL-MEMBER=E60-M01
JCL-NODE=148 EXECUTION-NODE=148
SUBMIT-USERID=GFR
SUBNET-ACT-MODE= SUBNET-TIME-MODE=0
MOD-USER=SYSDBA MOD-TIME=20140110124841
IN-COND-DEF
IN-CONDITION="E60-J013-0" IN-REFERENCE="RUN"
IN-EXIST=Y
END-OBJECT /* JOB-MASTER JOB-014 ( 40 LINES )
*
OBJECT=EOJ-CHECK-MASTER
* DATE: 20170130 TIME: 11:27:26 USER: NATQA5
OWNER=EXAMPLE
NETWORK=E60-FLOW
JOB=JOB-014
EVENT-NAME=JOB-OK
OUT-CONDITION-P
OUT-CONDITION="E60-J014-0" OUT-COND-REFERENCE="RUN" OUT-COND-DELETE-ADD=A
OUT-CONDITION-P
OUT-CONDITION="E60-J013-0" OUT-COND-REFERENCE="RUN" OUT-COND-DELETE-ADD=D
MOD-USER=IMPORT MOD-TIME=20140110124841
END-OBJECT /* EOJ-CHECK-MASTER JOB-014 ( 12 LINES )
*
OBJECT=JOB-MASTER
* DATE: 20170130 TIME: 11:27:26 USER: NATQA5
OWNER=EXAMPLE
NETWORK=E60-FLOW
JOB=JOB-019
SHDESC=depending on JOB-01
JOB-TYPE=JOB
ESC-ACTIVATION=@ ESC-SUBMIT=$
SYMBOL-TABLE=EXAM-ST1
JCL-LOCATION=MAC
JCL-FILE=SYSEORU
JCL-MEMBER=E60-M01
JCL-NODE=148 EXECUTION-NODE=148
SUBMIT-USERID=GFR

```

```

SUBNET-ACT-MODE= SUBNET-TIME-MODE=0
MOD-USER=SYSDBA MOD-TIME=20140110124841
IN-COND-DEF
IN-CONDITION="E60-JOB1-0" IN-REFERENCE="RUN"
IN-EXIST=Y
END-OBJECT /* JOB-MASTER JOB-019 ( 40 LINES )
*
OBJECT=EOJ-CHECK-MASTER
* DATE: 20170130 TIME: 11:27:26 USER: NATQA5
OWNER=EXAMPLE
NETWORK=E60-FLOW
JOB=JOB-019
EVENT-NAME=JOB-OK
OUT-CONDITION-P
OUT-CONDITION="E60-J019-0" OUT-COND-REFERENCE="RUN" OUT-COND-DELETE-ADD=A
MOD-USER=IMPORT MOD-TIME=20140110124841
END-OBJECT /* EOJ-CHECK-MASTER JOB-019 ( 10 LINES )
*
OBJECT=SYMBOL-MASTER
* DATE: 20170130 TIME: 11:27:26 USER: NATQA5
OWNER=EXAMPLE
SYMBOL-TABLE=EXAM-ST1
SYMBOL=CLASS
TYPE=A
VALUE=K
PROMPT=E
PT=THE CLASS FOR THE JOB CARD
MOD-USER=IMPORT MOD-TIME=20140110124854
END-OBJECT /* SYMBOL-MASTER EXAM-ST1 ( 11 LINES )
*
OBJECT=SYMBOL-MASTER
* DATE: 20170130 TIME: 11:27:26 USER: NATQA5
OWNER=EXAMPLE
SYMBOL-TABLE=EXAM-ST1
SYMBOL=JOBLIB
TYPE=A
VALUE=NOP.EXAMPLE.LOAD
PROMPT=E
PT=The ENTIRE OPERATIONS Installation
PT=Load Library
MOD-USER=IMPORT MOD-TIME=20140110124854
END-OBJECT /* SYMBOL-MASTER EXAM-ST1 ( 12 LINES )
*
OBJECT=SYMBOL-MASTER
* DATE: 20170130 TIME: 11:27:26 USER: NATQA5
OWNER=EXAMPLE
SYMBOL-TABLE=EXAM-ST1
SYMBOL=MSGCLASS
TYPE=A
VALUE=X
PROMPT=E
PT=THE MESSAGE CLASS FOR THE JOB CARD

```

```
MOD-USER=IMPORT MOD-TIME=20140110124854
END-OBJECT /* SYMBOL-MASTER EXAM-ST1 ( 11 LINES )
*
OBJECT=SYMBOL-MASTER
* DATE: 20170130 TIME: 11:27:26 USER: NATQA5
OWNER=EXAMPLE
SYMBOL-TABLE=EXAM-ST1
SYMBOL=STEPLIB
TYPE=A
VALUE=NOP.EXAMPLE.LOAD
PROMPT=E
PT=The ENTIRE OPERATIONS Installation
PT=Load Library
MOD-USER=IMPORT MOD-TIME=20140110124854
END-OBJECT /* SYMBOL-MASTER EXAM-ST1 ( 12 LINES )
```



# 5

## Object Specification

---

▪ OBJECT=NETWORK-MASTER .....	58
▪ OBJECT=JOB-MASTER .....	61
▪ OBJECT=JCL-MASTER .....	66
▪ OBJECT=EOJ-CHECK-MASTER .....	66
▪ OBJECT=DESCRIPTION .....	70
▪ OBJECT=SCHEDULE .....	71
▪ OBJECT=CALENDAR .....	72
▪ OBJECT=TO-ACTIVATE .....	73
▪ OBJECT=SYMBOL-MASTER .....	74
▪ OBJECT=MAILBOX-DEFINITION .....	75
▪ OBJECT=MAILBOX-ENTRY .....	75
▪ OBJECT=NODE-DEFINITION .....	76
▪ OBJECT=RESOURCE-DEFINITION .....	77
▪ OBJECT=RESOURCE-PREREQ .....	78
▪ OBJECT=USER-DEFINITION .....	78
▪ OBJECT=DEFAULTS .....	81
▪ OBJECT=GLOBAL-EXIT .....	84
▪ OBJECT=CONDITION-ACTIVE .....	85

## OBJECT=NETWORK-MASTER

### Import

Networks which have the owner `SYSTEM` cannot be imported.

Defaults with a library name starting with `DM` or with an equal sign (=) are not accepted during import.

### Modification Information

You can include **modification information** as described in the section *Sub-Objects*.

Abbr.	Field	Format	Remark
K	OWNER	common	
K	NETWORK	common	
K	NETWORK-VERSION	common	
	SHDESC	A70	Short description.
	LAST-RUN	P13	
	LAST-SUBMIT-RUN	P13	
	LAST-ACT	T (DT)	
	LAST-SCH-XT	T (DT)	Last schedule extract.
	EXTRACTED-UNTIL	T (DT)	Extracted until.
+	DEF-EX-NODE	common	Default execution node.
+	DEF-JCL-NODE	common	Default JCL node.
	DEF-FILE	A54	
	DEF-VOLSER	A6	
	DEF-FILE-PSWD	A8	Default file password.
	DEF-JCL-LOCATION	A3	Special value range.
	DEF-SUBMIT-USERID	common	Default submit user ID.
	DEF-SUBMIT-GROUP	common	Default submit group.
	DEF-SUBMIT-PSWD	A16	Default submit password.
	DEF-BS2000-USERID	A8	
	DEF-SUBMIT-JOB-CLASS	A8	
	DEF-SYSOUT-CATID	A4	
	DEF-SYSOUT-USERID	A8	
	DEF-ACCOUNT-NO	A8	
	DEF-SYMBOL-TABLE	common	
	DEF-SYMTAB-VERSION	common	Symbol table version. Field is case-sensitive.



Abbr.	Field	Format	Remark
	DEF-JCL-USERID	common	Default JCL user ID.
	DEF-JCL-GROUP	common	Default JCL group.
	DEF-ESC-ACT	A1	Default escape character for replacements at activation time.
	DEF-ESC-SUB	A1	Default escape character for replacements at submission time.
	DEF-ESC-TABLE	A10	Table containing the default escape characters for various operating systems.  Do not modify manually.
	DEF-EJA-ERROR-MODE	A1	
	SYMTAB-ACTIVATION-MOD	A1	X after extraction (default) A during activation.
	WAIT-FOR-NEXT	P5	
	NUMBER-OF-ACT	P3	Number of activations.
M	ACT-TIMES	T	Activation times.  Max. occurrence = 10.  Adding single entries is allowed.
	EARLIEST-START	T	
	LATEST-START	T	
	LATEST-DAYS-LATER	N3	
	DEADLINE	T	
	DEADLINE-DAYS-LATER	N3	
	Include <b>modification information</b> (see <i>Sub-Objects</i> ).		
PG	EXPL-DATE		Max. occurrence = 28.
PI	EXPL-DAY	D	Explicit schedule date.
	EXPL-FLAG	A1	Exclude.
			A After holiday.
			B Before holiday.
			Adding single entries is allowed.  Superdescriptor is unique.
M	HIST-DAY	D	History day.  Adding single entries is allowed.  Max. occurrence = 99.
PG	GRANT		Max. occurrence = 30.
PI	GRANT-TYPE	A1	0 = owner, U = user.

Abbr.	Field	Format	Remark
PI	GRANT-NAME	A10	Who got the grant.
	GRANT-FLAGS	A6	Adding single entries is allowed. Superdescriptor is unique.
	SYMBOL-PROMPT-EXITLIB	common	
	SYMBOL-PROMPT-USEREXIT	common	
	SYMBOL-PROMPT-IN-BG	A1	
	SYMBOL-NOT-FOUND-EXIT-LIBRARY	common	
	SYMBOL-NOT-FOUND-EXIT-MEMBER	common	
PG	SCHEDULE-RANGE		
PI	SR-OWNER	common	
PI	SR-SCHEDULE	common	
PI	SR-BEGIN	DT	
PI	SR-END	DT	
	SNF-EXIT-LIBRARY	common	Symbol not found exit library.
	SNF-EXIT-MEMBER	common	Symbol not found exit library.
	JOB-PRIORITY	A3	
	RUN-PRIORITY	A3	
PG	TIMEFRAME		
PI	TF-DEPENDENCY	A16	
PI	TF-EARLIEST-START	T	
PI	TF-EARLIEST-START-DAYS-TYPE	A1	
PI	TF-LATEST-START	T	
PI	TF-LATEST-DAYS-LATER	N3	
PI	TF-LATEST-START-DAYS-TYPE	A1	
PI	TF-DEADLINE	T	
PI	TF-DEADLINE-DAYS-LATER	N3	
PI	TF-DEADLINE-DAYS-TYPE	A1	

## OBJECT=JOB-MASTER

### Modification Information

You can include **modification information** as described in the section *Sub-Objects*.

Abbr.	Field	Format	Remark
K	OWNER	common	
K	NETWORK	common	
K	NETWORK-VERSION	common	
K	JOB	common	
	SHDESC	A70	Short description.
PG	IN-COND-DEF		Max. occurrence = 20.
PI	IN-CONDITION	common	
	IN-REFERENCE	A8	
	<b>Attributes:</b>		
	IN-EXCLUSIVE	A1	Logical value.
	IN-DESTRUCTIVE	A1	Logical value.
	<b>Input Condition Schedule Dependency:</b>		
	IN-SD-NEGATE	A1	
	IN-SD-USAGE	A1	
	IN-SD-TEST-SET	A2	
	IN-SD-POSITION	N3	+nnn = from period begin. -nnn = from period end.
	<b>Input Condition Specials:</b>		
	Only one of the following input condition specials is allowed per condition, since there is a redefinition.		
	IN-EXIST	A1	Logical value.
	<b>Type A - File Dependency:</b>		
	IN-FILE	A54	
	IN-FILE-MEMBER	A10	IN-FILE must be defined.
	Type B: BS2000 User Switch		
	IN-USW-USERID	A8	
	IN-USW-SWITCH	N2	Range is 0 through 31.
	<b>Type C - Include BS2000 Job Variable: see <a href="#">BS2000 Job Variable Definition</a>.</b>		
	<b>Type D - External Input Condition:</b>		
	IN-OWNER	common	

Abbr.	Field	Format	Remark
	IN-NETWORK	common	
	<b>Type Multiple Suffixes:</b>		
	IN-SUFFIX-SYMBOL-TABLE	common	
	IN-SUFFIX-SYMTAB-VERSION	common	Symbol table version.
	IN-SUFFIX-SYMBOL	common	
	IN-SUFFIX-JOB-ST	A1	Logical value.
	<b>Type F - Mailbox:</b>		
	IN-MAILBOX-TYPE	A1	
	IN-MAILBOX	common	
	IN-MAILBOX-SENT	A1	
	<b>Type G - User Exit:</b>		
	IN-EXITLIB	common	
	IN-USEREXIT	common	Adding single entries is allowed. Superdescriptor is unique.
	<b>Type Symbol Value:</b>		
	IN-SY-SYMBOL	common	
	IN-SY-SYMBOL-TABLE	common	
	IN-SY-SYMTAB-VERSION	common	Symbol table version.
	<b>Activation Schedule Dependency:</b>		
	ACT-SD-NEGATE	A1	
	ACT-SD-USAGE	A1	
	ACT-SD-TEST-SET	A2	
	ACT-SD-POSITION	N3	+nnn = from period begin. -nnn = from period end.
PG	RESOURCES		Max. occurrence = 20.
PI	RES-NAME	A20	
	RES-REQUIRED	P5	Adding single entries is allowed. Superdescriptor is unique.
+	JOB-TYPE	A3	
	SPECIAL-TYPE	A1	R: Recovery job. S: Stops an STC.
	RESTARTABLE	A1	Logical value.
	ESC-ACTIVATION	A1	
	ESC-SUBMIT	A1	
	SYMBOL-TABLE	common	
	SYMTAB-VERSION	common	Symbol table version.

Abbr.	Field	Format	Remark
	MPA-SUFFIX-SYMBOL	common	Like symbol.
	JCL-LOCATION	A3	
	JCL-NODE	common	
	JCL-FILE	A54	
	JCL-MEMBER	A64	
	JCL-MEMBER-TYPE	A8	
	JCL-MEMBER-VERSION	A24	
	JCL-VOLSER	A6	
	JCL-VSE-LIBRARY	A8	
	JCL-VSE-SUBLIB	A8	
	JCL-VSE-VSAM-CATALOG	A8	
	JCL-FILE-PASSWORD	A8	
	SYSOUT-CATID	A4	
	SYSOUT-USERID	A8	
	SYSOUT-NODE	common	
	JCL-USERID	common	
	JCL-GROUP	common	
+	EXECUTION-NODE	common	
	SUBMIT-USERID	common	
	SUBMIT-GROUP	common	
	SUBMIT-PASSWORD	A16	
	SUBMIT-JOB-CLASS	A8	
	EARLIEST-START	T	
	EARLIEST-START-DAYS-TYPE	A1	
	LATEST-START	T	
	LATEST-DAYS-AFTER	N3	
	LATEST-START-DAYS-TYPE	A1	
	DEADLINE	T	
	DEADLINE-DAYS-AFTER	N3	
	DEADLINE-DAYS-TYPE	A1	
	CYCLIC-INTERVAL	T	Relative time.
	EJA-ERROR-MODE	A1	
	Include <a href="#">message recipient</a> (see <i>Sub-Objects</i> ).		

Abbr.	Field	Format	Remark
	ESTIMATED-ELAPSED-TIME	T	Relative time.  Exported for downward compatibility only. Replaced by ESTIMATED-ELAPSED-SECONDS.
	ESTIMATED-ELAPSED-SECOND	N10	On import, this field has precedence before ESTIMATED-ELAPSED-TIME.
M	ELAPSED-TIME	T	Relative time.  Max. occurrence = 20.  Adding single entries is allowed.
	TAPES	N3	
PG	LOG-SM		Max. occurrence = 10.
PI	LOG-SM-MESSAGE	A7	
M	LOG-SM-SELECT	A40	Max. occurrence = 10.  Adding single entries is allowed.  Superdescriptor is unique.
	LOG-SO	A1	Log SYSOUT logic.
PG	LOG-SO-SELECT		Max. occurrence = 1.
PI	LOG-SO-TYPE	A2	
M	LOG-SO-DATASET	N3	Max. occurrence = 10.  Adding single entries is allowed.  Superdescriptor is unique.
	LOG-JCL	A1	Log JCL logic.
	LOG-SYSLST	A1	Log SYSLST logic.
	BS2000-USERID	A8	
	BS2000-ACCOUNT	A8	
	BS2000-MONJV	A54	
	BS2000-MONJV-PASSWORD	A8	Hexadecimal printable.
	BS2000-SYSOUT-SHARE	A1	Logical value.
	SUB-NETWORK-OWNER	common	
	SUB-NETWORK	common	
	SUB-NETWORK-VERSION	common	
	SUBNET-ACT-MODE	A1	Subnetwork activation mode.
	IN-ACTMODE	A1	
	DAT-TARGET-LOCATION	A3	Job type DAT: target location.

Abbr.	Field	Format	Remark
	DAT-TARGET-FILE	A54	Job type DAT: target file.
	DAT-TARGET-MEMBER	A64	Job type DAT: target member.
	DAT-TARGET-MEMBER-TYPE	A8	Job type DAT: target member type.
	DAT-TARGET-VSE-LIBRARY	A8	Job type DAT: z/VSE library.
	DAT-TARGET-VSE-SUBLIB	A8	Job type DAT: z/VSE sublibrary.
	DAT-TARGET-VSE-VSAMCAT	A8	Job type DAT: z/VSE VSAMCAT.
	DAT-TARGET-OVERWRITE	A1	Job type DAT: allow overwrite of target file.  <b>Logical value.</b>
	SNF-EXIT-LIBRARY	<b>common</b>	Symbol not found exit: exit library.
	SNF-EXIT-MEMBER	<b>common</b>	Symbol not found exit: exit member.
	EARLIEST-DAYS-AFTER	N3	
	JCL-LOAD-MODE	A1	
	JOB-PRIORITY	A3	
	RUN-PRIORITY	A3	
	CMDLINE-MODE	A1	
	SRV-WIN-SERVICE	A128	
	SUBNET-TIME-MODE	N5	
	IN-JV-COMP-VALUE-2	A128	
	FTP-USERID	<b>common</b>	
	FTP-GROUP	<b>common</b>	
	FTP-ACCOUNT	A8	
	FTP-CIPHER-PASSWORD	A32	
	FTP-REMOTE-HOST	A50	
	FTP-REMOTE-DIR	A128	
	FTP-LOCAL-DIR	A128	
	FTP-FILE	A128	
	FTP-FILE-2	A128	
	FTP-FILE-TYPE	A1	
	FTP-FUNCTION	A8	
	FTP-TYPE	A1	

## OBJECT=JCL-MASTER

---

- Currently for import only.
- JCL can be in different locations.
- Should be imported only into Natural first.

Abbr.	Field	Format	Remark
K	OWNER	common	
K	NETWORK	common	
K	NETWORK-VERSION	common	Network version. Field is case-sensitive.
K	JOB	common	
	TARGET-LOCATION	A3	Currently NAT only.
	JCL-NODE	common	
+	LIBRARY	A8	For NAT.
	MEMBER	A8	For NAT.
M	T	A78	JCL text line. Adding single entries is not allowed. Max. occurrence = 1.

## OBJECT=EOJ-CHECK-MASTER

---

This section covers the following topics:

- [OBJECT=EOJ-CHECK-MASTER](#)



- EOJ-Action: Entire Output Management

## OBJECT=EOJ-CHECK-MASTER

### Modification Information

You can include **modification information** as described in the section *Sub-Objects*.

Abbr.	Field	Format	Remark
K	OWNER	common	
K	NETWORK	common	
K	NETWORK-VERSION	common	
K	JOB	common	
	EVENT-NAME	A30	
	CODE	A4	
	VALUE	A5	
	OP	A2	
	OK	A2	Values: OK, NO.
M	FIND-IN	A8	Max. occurrence = 10. Adding single entries is allowed.
	ACTION-FILE	A54	
	SPOOL-CLASS-AFTER	A8	
	SYSOUT-ACTION	A1	
PG	OUT-CONDITION-P		Max. occurrence = 20.
PI	OUT-CONDITION	common	
	OUT-COND-REFERENCE	common	
	OUT-COND-DELETE-ADD	A1	A = Add. D = Delete.
	EJA-TMP-DUM-ACTION	A20	
	EJA-ERROR-MODE	A1	
	EJA-EXIT-MODE	A1	
	EJC-EXIT-MODE	A1	
	<b>BS2000 Job Variable Check:</b>		
	EJC-JOB-VARIABLE	A54	
	EJC-JV-SUB-POSITION	N3	
	EJC-JV-SUB-LENGTH	N3	
	EJC-JV-SUB-FORMAT	A1	
	EJC-JV-COMP-OP	A2	
	EJC-JV-VALUE	A128	
	EJC-JV-VALUE-2	A128	

Abbr.	Field	Format	Remark
	<b>EOJ-Action - Activation:</b>		
	ACT-OWNER	common	
	ACT-NETWORK	common	
	ACT-NETWORK-VERSION	common	
	ACT-JOB	common	
	ACT-EXITLIB	common	
	ACT-USEREXIT	common	
	ACT-DATE-TIME-DEPENDENT	A1	
	ACT-SCHEDULE-USAGE	A1	
	ACT-SCHEDULE-OWNER	A10	
	ACT-SCHEDULE	A10	
	<b>EOJ-Action - Set Symbol:</b>		
	EJA-SYMBOL-OWNER	common	
	EJA-SYMBOL-TABLE	common	
	EJA-SYMTAB-VERSION	common	Set symbol: symbol table version.
	EJA-SYMBOL	common	
	EJA-SYMBOL-SUB-POSITION	N3	Set symbol: substring position.
	EJA-SYMBOL-SUB-LENGTH	N3	Set symbol: substring length.
	EJA-SYMBOL-SUB-FORMAT	A1	Set symbol: substring format.
	<b>EOJ-Action - Recovery:</b>		
	RCV-OWNER	common	
	RCV-NETWORK	common	
	RCV-NETWORK-VERSION	common	
	RCV-JOB	common	
	RCV-LIMIT	N2	
	RCV-RESCHEDULE	A3	
	RCV-WAIT-TIME	N3	
	RCV-SAME-RUN	A1	Logical value.
	RCV-SYMBOL-OWNER	A10	
	RCV-SYMBOL-TABLE	A10	
	<b>EOJ-Action - Message Sending:</b>		
	MSG	A42	
PG	Include <b>message recipient</b> (see <i>Sub-Objects</i> ).	common	
	<b>EOJ-Check - BS2000 Specials:</b>		

Abbr.	Field	Format	Remark
	BS2000-USERID	A8	
	BS2000-PASSWORD	A8	Contains printable hex value.
	USER-SWITCH	N2	
	ACCEPT-NOT-OK	A1	Logical value.
	<b>EOJ-Action - BS2000 Job Variable Setting:</b>		
	EJA-JOB-VARIABLE	A54	
	EJA-JV-SUB-POSITION	N3	
	EJA-JV-SUB-LENGTH	N3	
	EJA-JV-SUB-FORMAT	A1	
	EJA-JV-VALUE	A128	
	EJA-JV-VALUE-2	A128	
	<b>EOJ-Action - Release Resource:</b>		
	EJA-REL-K-RESOURCE	A20	
	<b>EOJ-Action - Entire Output Management:</b>		
PG	EJA-NOM-ACTION		Max. occurrence = 10.
PI	EJA-NOM-SOURCE-TYPE	A4	
PI	EJA-NOM-SPOOL-FILE-TYPE	A2	These parameters describe a SPOOL file for z/OS and z/VSE operating systems.
PI	EJA-NOM-SPOOL-FILE-NUMBER	N5	
PI	EJA-NOM-SPOOL-PROCNAME	A8	
PI	EJA-NOM-SPOOL-STEPNAME	A8	
PI	EJA-NOM-SPOOL-DDNAME	A8	
PI	EJA-NOM-FILE-NAME	A54	These parameters describe a sequential file for BS2000, z/OS and z/VSE operating systems.
	EJA-NOM-FILE-CCTYPE	A4	
PI	EJA-NOM-FILE-VOLSER	A6	
PI	EJA-NOM-FILE-RECFM	A2	
PI	EJA-NOM-FILE-LRECL	N5	
PI	EJA-NOM-FILE-BLKSIZE	N5	
	EJA-NOM-FILE-PNAME	A8	
	EJA-NOM-FILE-TMP-DUMMY	A1	
	<b>Object Description:</b>		
M	T	A80	Description text line.  Max. occurrence = 1000.  Lines containing at least one blank must be enclosed in apostrophes ( ' ' ).
	DESC-MOD-USER	A8	Like common MOD-USER, but for object description.

Abbr.	Field	Format	Remark
	DESC-MOD-DATE	DT	Like common MOD - TIME, but for object description.
	DESC-CREATION-DATE	DT	Like common CREATION - TIME, but for object description.

## EOJ-Action: Entire Output Management

The identification of SPOOL files and sequential files to be sent to Entire Output Management functions as described in the following tables.

### SPOOL Files

File	Source Type	File Type	File No.	PROCNAME	STEPNAME	DDNAME
z/OS	JES 2, JES 3	X	X			
	JES 2, JES 3			X	X	X
z/VSE	POWR	X				
	POWR			X	X	X

### Sequential Files

File	Source Type	File Name	Volser	RECFM	LRECL	BLKSIZE
BS2000	SEQB	X				
z/OS	SEQM	X				
z/VSE	SEQV	X	X	X	X	X
UNIX	SEQX	X				
Windows	SEQW	X				

X means “must exist”.

## OBJECT=DESCRIPTION

---

### Modification Information

You can include **modification information** as described in the section *Sub-Objects*.

Abbr.	Field	Format	Remark
+	TYPE		NETWORK, JOB, EVENT
K	OWNER	common	
K	NETWORK	common	
K	JOB	common	For TYPE=NETWORK, this is not a key field.
M	T	A80	Description text line. Description texts begin with T=. Lines longer than 70 are split. Description records should be contiguous. Max. occurrence = 1000.

## OBJECT=SCHEDULE

### Import

When importing a schedule, the current date is entered as an explicit exclusion date in the network schedule. This prevents unwanted activations.

### Modification Information

You can include **modification information** as described in the section *Sub-Objects*.

Abbr.	Field	Format	Remark
K	OWNER	common	
K	SCHEDULE	common	
	CALENDAR	common	
	CALENDAR-OWNER	common	
	SHDESC	A70	Short description.
M	M-MONTH	N2	Month for monthly dates. Adding single entries is allowed.
PG	M-DATE		Max. occurrence = 31.
PI	M-DAY	A2	Just day of month.
	M-FLAG	A1	A: After holiday. B: Before holiday. W: Workday of month. V: Workday of month, counted from end of month. Adding single entries is allowed.  Superdescriptor is unique.
M	W-MONTH	N2	Month for weekly dates. Adding single entries is allowed.

Abbr.	Field	Format	Remark
			Max. occurrence = 12.
PG	W-DATE		Max. occurrence = 7.
PI	W-DAY	N1	1 = Sunday, 2 = Monday, 3 = Tuesday, etc.
	W-FLAG	A1	A: After holiday. B: Before holiday. W: Workday of week. V: Workday of week, counted from end of week.
PG	EXPL-DATE		Max. occurrence = 28.
PI	EXPL-DAY	D	Explicit schedule date.
	EXPL-FLAG	A1	Exclude.  A: After holiday. B: Before holiday. Adding single entries is allowed.  Superdescriptor is unique.

## OBJECT=CALENDAR

### Import

Empty calendars are added for the current year.

### Modification Information

You can include **modification information** as described in the section *Sub-Objects*.

Abbr.	Field	Format	Remark
K	OWNER	common	
K	CALENDAR	common	
M	HDAY	D	Holiday/Workday.  Adding single entries is allowed.  Max. occurrence = 99.
M	WDAY	D	Dates must be grouped in year tables. Adding single entries is allowed.  Max. occurrence = 99.
PG	PERIODIC		Not yet implemented.  Max. occurrence = 99.
	P-START-DATE	D	Start of validity range.
	P-END-DATE	D	End of validity range.
	P-PERIOD	A1	Y =year

Abbr.	Field	Format	Remark
			M =month W =week
M	P-POSITION	N3	+nnn = from period begin.  -nnn = from period end.  Adding single entries is allowed.  No superdescriptor.  All entries are used in conjunction (logical OR).  Max. occurrence = 1.
M	YEAR-DEFINED	N4	This field is written for each year the calendar is defined for, even if the calendar is empty for that year.  Max. occurrence = 20.
	SHDESC	A70	Short description.

## OBJECT=TO-ACTIVATE

### Import

Planned activations before or at the current date are rejected. This prevents unwanted activations.

### Modification Information

You can include **modification information** as described in the section *Sub-Objects*.

Abbr.	Field	Format	Remark
K	OWNER	common	
K	NETWORK	common	
	JOB	common	Not defined: network activation.  Enter a hyphen ( - ) here.
	RUN	common	For MODE=ADD:  If the run number already exists in target, a new one is to be used, and a warning message must be issued.  If not specified, a new run number must be used too.
+	AT	DT	
	SYMBOL-MOD-BKGR	A1	Logical value.
	SYMBOL-TABLE	common	

Abbr.	Field	Format	Remark	
	ORIGIN	A1	A	By API.
			E	By EOJ action.
			M	Manual activation.
			R	Recovery.
			S	By schedule extraction.
			U	By API, as subnetwork.
	EARLIEST-OFFSET	P13	In 1/10 sec.	
	PLAN-EARLIEST-START	T (DT)		
	DATE-TIME-DEPENDENT	A1		

## OBJECT=SYMBOL-MASTER

### Modification Information

You can include **modification information** as described in the section *Sub-Objects*.

Abbr.	Field	Format	Remark
K	OWNER	common	
K	SYMBOL-TABLE	common	
K	SYMTAB-VERSION	common	
K	SYMBOL	common	
	TYPE	A1	
	LENGTH	N2	
	VALUE	A120	For the handling of blank values and double quotation marks, see <a href="#">Alphanumeric value</a> .
M	MULT-VALUE	A120	Max. occurrence = 150.  VALUE and MULT-VALUE are mutually exclusive.  Adding single entries is allowed. For the handling of blank values and double quotation marks, see <a href="#">Alphanumeric value</a> .
	PROMPT	A1	
M	PT	A70	Prompt text.  Max. occurrence = 5.  Adding single entries is not allowed.
	USEREXIT	common	



Abbr.	Field	Format	Remark
	EXITLIB	common	
	CV-FROM	A10	
	CV-TO	A10	
	UPDATE-MODE	A1	

## OBJECT=MAILBOX-DEFINITION

### Modification Information

You can include **modification information** as described in the section *Sub-Objects*.

Abbr.	Field	Format
K	MAILBOX	common
	DESCRIPTION	A70

## OBJECT=MAILBOX-ENTRY

### Modification Information

You can include **modification information** as described in the section *Sub-Objects*.

Abbr.	Field	Format	Remark
K	MAILBOX	common	
K	RECEIVER-TYPE	A1	Message receiver (recipient) type: A, U, G, O, N or C.
K	NEXT-ACTION-TIME	DT	
	MESSAGE-CODE	N4	
	MESSAGE	A70	
	STATUS	N4	
	SENDER	A8	
	SEND-TIME	DT	
	MESSAGE-TYPE	A3	To be analyzed.
	READ-TIME	DT	
	READ-COUNT	P5	
	REPLY	A70	
	OWNER	common	

Abbr.	Field	Format	Remark
	NETWORK	common	
	JOB	common	
	RUN	common	
	ACTIVATION-TIME	DT	
	EARLIEST-START	DT	
	JOB-ID	common	
	CONDITION	common	
	COND-REFERENCE	common	
	SYMBOL	common	
	SYMBOL-TABLE	common	

## OBJECT=NODE-DEFINITION

---

### Modification Information

You can include **modification information** as described in the section *Sub-Objects*.

Abbr.	Field	Format	Remark
K	NODE	common	
	NODE-A	A5	Short (mnemonic) name.
+	NAME	A32	Long name.
	ACCESS-MODE	A1	B = node is accessed via the EntireX Broker.  L = local node (UNIX and Windows only).  N = node is accessed via Net-Work.
	TIME-DIFFERENCE	T	Explanation: 12:00 = 0 h, 16:00 +4 h, 04:00 = - 8h.
	NPR-VERSION	A10	Version of Entire System Server, which was in effect at the last successful access to the node.
	CYGWIN-DIRECTORY	A200	
	OPSYS-CLASS	A1	Operating system class.
	OS-RELEASE	A64	Operating system release, which was in effect at the last successful access to the node.  Example:

Abbr.	Field	Format	Remark
			openSUSE 11.4 (x86_64)
	OPERATING-SYSTEM	A8	Operating system, in Entire Operations internal format.
	VALID	A1	<b>Logical value.</b>
	WAIT-AFTER-ERROR	T	Format: relative time.
	PRINT-COMMAND	A64	UNIX print command.
	DEF-USERID	<b>common</b>	
	DEF-GROUP	<b>common</b>	
	VSE-SYSID	N3	
	MESSAGE-COMMAND	A70	
	MAIL-SENDER	A128	
	MAIL-SENDER-NAME	A128	
	MAIL-REPLY-TO	A128	
	MAIL-REPLY-TO-NAME	A128	
	MAIL-DESTINATION	A8	
	MAIL-SYSOUT-CLASS	A1	
	SUBMIT-SEC-USER-TYPE	A1	Submit security user type.
	SPOOL-CLASS-AFTER	A8	

## OBJECT=RESOURCE-DEFINITION

### Modification Information

You can include **modification information** as described in the section *Sub-Objects*.

Abbr.	Field	Format	Remark
K	RESOURCE	A20	
+	TYPE	A1	
	QUANTITY	P7.2	
	INITIAL-QUANTITY	P7.2	
	EXIT-LIBRARY	A8	For Resource Master Determination exit.
	EXIT-MEMBER	A8	For Resource Master Determination exit.
	EXIT-TYPE	A1	<b>Logical value.</b>
	EXIT-CALL-TIME	DT	
	EXIT-CALL-INTERVAL	N10	
	EXIT-CALL-STATUS	N8	
	EXIT-PARAMETER	A36	

## OBJECT=RESOURCE-PREREQ

---

### Modification Information

You can include **modification information** as described in the section *Sub-Objects*.

Abbr.	Field	Format	Remark
K	DBENV	common	Database environment (for future use).
K	OWNER	common	
K	NETWORK	common	
K	JOB	common	
	RESOURCE	A20	
	QUANTITY	P7.2	
	DEALLOCATION	A1	
	DEALLOCATE-NOT-OK	A1	Logical value.

## OBJECT=USER-DEFINITION

---

Abbr.	Field	Format	Remark
K	USERID	A8	
	PASSWORD	A8	
	LANGUAGE	N3	
+	MAIN-OWNER	A10	
M	OWNER	A10	An unlimited number of owners may be defined for a user.  Adding single entries is allowed.
PG	MAILBOX		Max. occurrence = 10.
PI	MAILBOX-TYPE	A1	
PI	MAILBOX-NAME	A10	Adding single entries is allowed.  Superdescriptor is unique.
+	PROF-TYPE	A1	
	PROF-USERS	A1	
	PROF-RESOURCES	A1	
	PROF-RESOURCE-USAGE	A1	
	PROF-NODES	A1	
	PROF-DEFAULTS	A1	

Abbr.	Field	Format	Remark
	PROF-MAILBOX-DEFINITION	A1	
	PROF-MONITOR	A1	Prof-Startup/Prof-Shutdown. <b>Logical value.</b>
	PROF-NETWORKS	A1	
	PROF-JOB-MASTER	A1	Prof-Jobs.
	PROF-IN	A1	
	PROF-OUT	A1	
	PROF-JCL-MASTER	A1	Prof-JCLs.
	PROF-PROSE-MASTER	A1	Prof-Description.
	PROF-SYMBOLS	A1	
	PROF-JOB-ACTIVE	A1	Prof-Ajobs.
	PROF-AIN	A1	
	PROF-AOUT	A1	
	PROF-JCL-ACTIVE	A1	Prof-AJCLs.
	PROF-PROSE-ACTIVE	A1	Prod-Aprose.
	PROF-COND-ACTIVE	A1	Prof-Acond.
	PROF-REP1	A1	Logical value (obsolete).
	PROF-REP2	A1	Logical value (obsolete).
	PROF-REP3	A1	Logical value (obsolete).
	PROF-REP4	A1	Logical value (obsolete).
	PROF-REP5	A1	Logical value (obsolete).
	PROF-REP6	A1	Logical value (obsolete).
	PROF-REP7	A1	Logical value (obsolete).
	PROF-REP8	A1	Logical value (obsolete).
	PROF-LOG	A1	<b>Logical value.</b>
	PROF-SCHEDULE	A1	<b>Logical value.</b>
	PROF-CALENDARS	A1	
	PROF-ACTIVATION	A1	<b>Logical value.</b>
	PROF-RESUBMIT	A1	<b>Logical value.</b>
	PROF-HOLD-RELEASE	A1	<b>Logical value.</b>
	PROF-JCL-GENERATE	A1	Prof-Gen.JCL. <b>Logical value.</b>
	PROF-SYSOUT	A1	<b>Logical value.</b>
	PROF-GLOB-COND	A1	

Abbr.	Field	Format	Remark
	PROF-JOB-CANCEL	A1	Prof-Canjob. <a href="#">Logical value.</a>
	PROF-MAILBOX-READ	A1	<a href="#">Logical value.</a>
	PROF-NETWORK-ACCESS	A1	
	PROF-NETWORK-ACTIVATION	A1	<a href="#">Logical value.</a>
	PROF-SYMBOL-PRINT	A1	<a href="#">Logical value.</a>
	PROF-SYSTEM-OTHER	A1	<a href="#">Logical value.</a>
	PROF-XREF	A1	<a href="#">Logical value.</a>
	PROF-IMPORT-EXPORT	A1	<a href="#">Logical value.</a>
	PROF-PROSE-MASTER	A1	
	PROF-EDITOR-AUTOSAVE	A1	<a href="#">Logical value.</a>
	PROF-EXIT-DIRECTORY	A1	<a href="#">Logical value.</a>
	PROF-SPECIAL-FUNCTIONS	A1	<a href="#">Logical value.</a>
	PROF-MAIL-SORT-ORDER	A1	
	PROF-REP-SEL-WILDCARD	A1	<a href="#">Logical value.</a>
	PROF-SYM-LIST-LONG	A1	<a href="#">Logical value.</a>
	PROF-LAST-RUN-MODE	A1	
	PROF-USE-LAST-LOGON	A1	<a href="#">Logical value.</a>
	PROF-GUI-PROFILE	A1	<a href="#">Logical value.</a>
	PROF-LAJ-SORT-ORDER	A1	
	PROF-LAJ-SORT-KEY	A1	
	PROF-NON-SEC-SETTINGS	A1	<a href="#">Logical value.</a>
	PROF-PREFIX-LOG-MSG	A1	<a href="#">Logical value.</a>
	PROF-NAMED-FILTER	A1	
	EDITOR-LINE-LIMIT	N7	
	SELECT-NETWORK-LIST	A10	
	GUI-PROFILE	A50	
	GUI-REFRESH-INTERVAL	N10	
	EMAIL-ADDRESS	A100	The @ is replaced by ( a t ) in this field.
	WP-SORT-ORDER	A1	
	WP-SORT-COLUMN	A1	
	NODE-REPRESENTATION	A1	
	<b>Include <a href="#">modification information</a> (see <i>Sub-Objects</i>).</b>		
+	LOGON		
PG			

Abbr.	Field	Format	Remark
	LOGON-NODE	A16	
	LOGON-USERID	A20	
	LOGON-GROUP	A20	

## OBJECT=DEFAULTS

### Modification Information

You can include **modification information** as described in the section *Sub-Objects*.

Abbr.	Field	Format	Remark
K	LIBRARY	A8	
	MONITOR-MODULE	A8	
	DATE-FORMAT	A1	
	MONITOR-USERID	A8	
	MONITOR-WAIT-TIME	N8	In seconds.
	MONITOR-EXEC-TYPE	A1	
	MONITOR-SUBTASK-USER	A16	
	MONITOR-TASK-PREFIX	A3	
	SAT-DBID	common	
	SAT-FNR	common	
	SAT-LIBRARY	A8	
	BS2000-MON-JCL	A54	
	BS2000-MON-JCL-MEMBER	A64	
	BS2000-MON-JCL-VERSION	A24	
	DEFAULT-NODE	common	
	MONITOR-NODE	common	
	JCL-HEADER	A1	Logical value.
	JCL-SYMBOL-LOG	A1	Logical value.
	ACTIVE-JOB-AGE	N4	
	ACTIVE-NETWORK-AGE	N4	
	CONDITION-AGE	N4	
	LOGGING-AGE	N4	
	LONG-LOG-AGE	N4	
	ACCOUNTING-AGE	N4	
	LATEST-START-AFTER	P13	In 1/10 sec.

Abbr.	Field	Format	Remark
	DEADLINE-AFTER	P13	Unit 1/10 sec.
	EXTRACTION-BEFORE-DAYS	P5	
	PREVIOUS-DATE-END-TIME	T	
	ACTIVATION-BEFORE	N3	Unit: minutes.
	LOGON-SCREEN	A1	Logical value.
	LOGOFF-RETURN	A1	Logical value.
	CALENDAR-DISPLAY	A1	
	SYMBOL-UPDATE-MASTER	A1	Logical value.
	ESCAPE-ACTIVATION	A1	
	ESCAPE-SUBMIT	A1	
	SYSTEMFILE-2-DBID	common	Data-2-DBID.
	SYSTEMFILE-2-FNR	common	Data-2-FNR.
	LANGUAGE	N3	
	USER-APPLICATION	A8	
	USER-MENU-LINE	A50	
	SUBMIT-SEC-USER-TYPE	A1	
	SUBMIT-EXIT-TYPE	A1	
	SUBMIT-USEREXIT	common	
	ACTIVATION-JCL-USEREXIT	common	
	OS-DEF-MSGCLASS	A8	
	OS-DEF-MSGLEVEL	A8	
	OS-DEF-CODE-VALUE	A4	
	OS-DEF-USER-VALUE	A4	
	OS-SPOOL-CLASS	A8	
	SPOOL-CLASS-AFTER	A8	
	MVS-ACCEPT-TERM-CC	A1	Logical value.
	BS2000-ACCOUNT	A8	
	BS2000-JOB-CLASS	A1	
	BS2000-SYSOUT-SHARE	A1	Logical value.
	BS2000-COLLECT-SYSLST	A1	Logical value.
	BS2000-MONJV-KILL	A1	Logical value.
	VSE-MEMBER-TYPE	A8	
	AUTO-CLEANUP	A1	
	AUTO-CLEANUP-TIME	T	
	USE-SCHEDULE-TIME	A1	Logical value.
	MONITOR-NODE-TYPE	A1	



Abbr.	Field	Format	Remark
	ESC-TABLE	A10	
	SYMBOL-USEREXIT	A8	
	EXITCODE-MAX-UNIX	A8	
	EXITCODE-MAX-WNT	A8	
	BS2000-SEVERITY	A4	
	FILE-PASSWORD-AT-EDIT	A1	
	BS2000-MSG-NOT-OK	A7	
	USERID-DEFINITION	A1	
	NOM-SYSOUT-COPY	A1	Logical value.
PG	MESSAGE-CODES		Max. occurrence = 10.
PI	MESSAGE-CODE	A10	
	MESSAGE-SEVERITY	A4	
	MESSAGE-OPSYS	A8	Adding single entries is not allowed. Superdescriptor is unique.
	RUN-MAXIMUM	N5	Run number maximum (limit).
	SYSOUT-MAX-LINES	N10	
	SUBNET-ACT-MODE	A1	Subnetwork activation mode.
	LOG-ACTIVE-JCL-MOD	A1	Log modifications of active JCL. Logical value.
PG	DEF-MSG-RECEIVER		Message recipient (receiver). Max. occurrence = 8.
PI	DEF-MSG-RCV-NAME	A8	
PI	DEF-MSG-RCV-TYPE	A1	
PI	DEF-MSG-RCV-PROCESSOR	A10	
PI	DEF-MSG-RCV-NODE	common	
	DEF-MSG-PROFILE	A20	
	DEF-MSG-SYMBOL-OWNER	common	
	DEF-MSG-SYMBOL-TABLE	common	
	DEF-MSG-SYMTAB-VERSION	common	
PG	MONITOR-TASK-TABLE		Max. occurrence = 99.
PI	TASK-NUMBER	N3	

Abbr.	Field	Format	Remark
PI	TASK-FUNCTION	A59	Contains up to 15 task functions, as 3-letter codes, separated by commas. Example:  TASK-FUNCTION=SCE,ACT,JCL,SUB,JEX,SU3  Recommendation: Do not modify the Monitor task table definitions in the export file.
PI	TASK-WAIT-TIME	N6	Specific task wait time. Unit: seconds.
	DEF-NAT-TASK-MAX	N3	Maximum number of dedicated Natural tasks.
	DEF-NAT-IDLE-MAX	N3	Maximum idle time of a Natural task. Unit: minutes.
	DEF-JCL-REGEN-SYMBOL-PROMPT	A1	
	TA-KEEP-TIMEFRAMES	A1	
	LOG-ESY-LOGON	A1	
	DEACT-JOBS-AT-ONCE	N10	
	NOM-RETRY-LIMIT	N7	
	RE-SUBMIT-SYMBOL	A1	
	LOG-API	A1	
	CONFIRM-PROFILE	A32	
	ENCODING	A8	
	STEP-ACCOUNTING	A1	
	NOM-EMPTY-FILE	A1	
	SYMTAB-ACT-MODE	A1	
	NETWORK-VERSION-LIMIT	N7	

## OBJECT=GLOBAL-EXIT

### Modification Information

You can include **modification information** as described in the section *Sub-Objects*.

Abbr.	Field	Format
K	TYPE	A8
	LIBRARY	common
	MEMBER	common
	SUBMIT-EXIT-TYPE	A1

## OBJECT=CONDITION-ACTIVE

Abbr.	Field	Format	Remark
K	OWNER	common	
K	NETWORK	common	
K	RUN	common	
K	CONDITION	common	
	STATE	N4	0 = free in use. 1 = currently in use. 2 = exclusive use. 3 = use then delete.
	ACTIVATION-TIME	DT	Activation date and time of the active job network.  This timestamp is used for time range comparisons.

