

NaturalONE

Mainframe Navigation

Version 9.2.1

January 2024

This document applies to NaturalONE Version 9.2.1 and all subsequent releases.

Specifications contained herein are subject to change and these changes will be reported in subsequent release notes or new editions.

Copyright © 2009-2024 Software AG, Darmstadt, Germany and/or Software AG USA, Inc., Reston, VA, USA, and/or its subsidiaries and/or its affiliates and/or their licensors.

The name Software AG and all Software AG product names are either trademarks or registered trademarks of Software AG and/or Software AG USA, Inc. and/or its subsidiaries and/or its affiliates and/or their licensors. Other company and product names mentioned herein may be trademarks of their respective owners.

Detailed information on trademarks and patents owned by Software AG and/or its subsidiaries is located at <http://softwareag.com/licenses>.

Use of this software is subject to adherence to Software AG's licensing conditions and terms. These terms are part of the product documentation, located at <http://softwareag.com/licenses/> and/or in the root installation directory of the licensed product(s).

This software may include portions of third-party products. For third-party copyright notices, license terms, additional rights or restrictions, please refer to "License Texts, Copyright Notices and Disclaimers of Third-Party Products". For certain specific third-party license restrictions, please refer to section E of the Legal Notices available under "License Terms and Conditions for Use of Software AG Products / Copyright and Trademark Notices of Software AG Products". These documents are part of the product documentation, located at <http://softwareag.com/licenses> and/or in the root installation directory of the licensed product(s).

Use, reproduction, transfer, publication or disclosure is prohibited except as specifically provided for in your License Agreement with Software AG.

Document ID: MFN-DOC-921-20240129

Table of Contents

| | |
|--|----|
| Preface | v |
| 1 About this Documentation | 1 |
| Document Conventions | 2 |
| Online Information and Support | 2 |
| Data Protection | 3 |
| I Installation and Configuration | 5 |
| 2 Installation and Configuration | 7 |
| Server Prerequisites | 8 |
| Installing Mainframe Navigation | 8 |
| Installation on Mainframe Servers | 8 |
| Defining the Entire System Server Nodes | 9 |
| Configuring Natural ISPF on the Mainframe Server | 9 |
| II | 11 |
| 3 Accessing an Entire System Server Environment | 13 |
| About the Mainframe Navigation View | 14 |
| Showing the Mainframe Navigation View | 15 |
| Mapping a Mainframe Navigation Environment | 15 |
| Unmapping a Mainframe Navigation Environment | 17 |
| 4 Managing the Server Nodes | 19 |
| Displaying the Server Nodes | 20 |
| Logging on to a Server Node | 20 |
| Displaying the Properties of a Server Node | 21 |
| 5 Listing and Filtering Objects | 25 |
| Listing an Object | 26 |
| Filtering an Object | 26 |
| 6 General Commands for Managing Different Types of Objects | 29 |
| General Information | 30 |
| Editing an Object | 30 |
| Browsing an Object | 31 |
| Deleting an Object | 32 |
| Displaying the Properties | 32 |
| Refreshing the Display | 33 |
| Using the Console View in Eclipse | 33 |
| III Managing z/OS Objects | 35 |
| 7 z/OS Datasets | 37 |
| Filtering z/OS Datasets | 38 |
| Compressing a z/OS Dataset | 39 |
| Displaying the Properties of a z/OS Dataset | 39 |
| 8 PDS Members | 43 |
| Filtering PDS Members | 44 |
| Adding a New PDS Member | 45 |
| Submitting a PDS Member | 46 |
| Displaying the Properties of a PDS Member | 46 |

- 9 z/OS Volumes 49
 - Filtering z/OS Volumes 50
 - Filtering Datasets on a z/OS Volume 51
 - Displaying the Properties of a z/OS Volume 52
- 10 z/OS Jobs 53
 - Filtering z/OS Jobs 54
 - Displaying the Condition Codes of a z/OS Job 55
- 11 z/OS Active Jobs 57
 - Filtering z/OS Active Jobs 58
 - Displaying the Condition Codes of a z/OS Active Job 59
- IV 61
 - 12 System Log 63
 - Browsing the System Log 64
 - 13 Console 65
 - Browsing the Console 66

Preface

Mainframe Navigation allows you to access and manipulate objects stored on a mainframe from Eclipse. These objects include datasets and members, as well as system objects such as active jobs or the console under the z/OS operating system. With Mainframe Navigation, the objects are displayed in a tree structure and can be browsed and edited in Eclipse. On the mainframe server, Mainframe Navigation is supported by Natural ISPF.

This documentation is organized under the following headings:

| | |
|---|---|
| Installation and Configuration | How to install and configure Mainframe Navigation. Prerequisites on the mainframe server. |
| Accessing an Entire System Server Environment | About the Mainframe Navigation view. How to map the mainframe environment in which the Entire System Server nodes have been defined. |
| Managing the Server Nodes | Explains the operations that can be performed on a server node. |
| Listing and Filtering Objects | How to list objects and how to reduce the number of shown objects. Detailed information on how to list and filter a specific type of object is provided in the appropriate section later in this documentation which deals with this type of object. |
| General Commands for Managing Different Types of Objects | How to edit, browse and delete objects, how to refresh the display, how to display the properties of an object, and how to display information in the Console view of Eclipse. The descriptions in this section apply to all types of objects. They are not repeated in later sections of this documentation which deal with the different types of objects. |
| Managing z/OS Objects | How to manage z/OS datasets, PDS members, volumes, jobs and active jobs. |
| System Log | How to browse the system log. |
| Console | How to browse the console. |

1 About this Documentation

| | |
|--|---|
| ▪ Document Conventions | 2 |
| ▪ Online Information and Support | 2 |
| ▪ Data Protection | 3 |

Document Conventions

| Convention | Description |
|----------------|--|
| Bold | Identifies elements on a screen. |
| Monospace font | Identifies service names and locations in the format <code>folder.subfolder.service</code> , APIs, Java classes, methods, properties. |
| <i>Italic</i> | Identifies: Variables for which you must supply values specific to your own situation or environment. New terms the first time they occur in the text. References to other documentation sources. |
| Monospace font | Identifies: Text you must type in. Messages displayed by the system. Program code. |
| { } | Indicates a set of choices from which you must choose one. Type only the information inside the curly braces. Do not type the { } symbols. |
| | Separates two mutually exclusive choices in a syntax line. Type one of these choices. Do not type the symbol. |
| [] | Indicates one or more options. Type only the information inside the square brackets. Do not type the [] symbols. |
| ... | Indicates that you can type multiple options of the same type. Type only the information. Do not type the ellipsis (...). |

Online Information and Support

Product Documentation

You can find the product documentation on our documentation website at <https://documentation.softwareag.com>.

In addition, you can also access the cloud product documentation via <https://www.software-ag.cloud>. Navigate to the desired product and then, depending on your solution, go to “Developer Center”, “User Center” or “Documentation”.

Product Training

You can find helpful product training material on our Learning Portal at <https://knowledge.softwareag.com>.

Tech Community

You can collaborate with Software AG experts on our Tech Community website at <https://tech-community.softwareag.com>. From here you can, for example:

- Browse through our vast knowledge base.
- Ask questions and find answers in our discussion forums.
- Get the latest Software AG news and announcements.
- Explore our communities.
- Go to our public GitHub and Docker repositories at <https://github.com/softwareag> and <https://hub.docker.com/publishers/softwareag> and discover additional Software AG resources.

Product Support

Support for Software AG products is provided to licensed customers via our Empower Portal at <https://empower.softwareag.com>. Many services on this portal require that you have an account. If you do not yet have one, you can request it at <https://empower.softwareag.com/register>. Once you have an account, you can, for example:

- Download products, updates and fixes.
- Search the Knowledge Center for technical information and tips.
- Subscribe to early warnings and critical alerts.
- Open and update support incidents.
- Add product feature requests.

Data Protection

Software AG products provide functionality with respect to processing of personal data according to the EU General Data Protection Regulation (GDPR). Where applicable, appropriate steps are documented in the respective administration documentation.

I Installation and Configuration

2 Installation and Configuration

- Server Prerequisites 8
- Installing Mainframe Navigation 8
- Installation on Mainframe Servers 8
- Defining the Entire System Server Nodes 9
- Configuring Natural ISPF on the Mainframe Server 9

Server Prerequisites

The following Software AG products must be installed on the server:

- Natural Development Server (NDV)*.
- Natural ISPF (ISP) 8.2 or above.
- System Automation Tools (SAT)*.
- Entire System Server (NPR)*.
- Natural for Mainframes (NAT)** , including the Entire System Server Interface (ESX). See *Installing the Entire System Server Interface* in the *Installation* documentation which is provided with Natural for Mainframes.

* The required version of Natural Development Server, System Automation Tools and Entire System Server depends on the installed Natural version. See the *Release Notes* which are provided with Natural for Mainframes.

** The required Natural version depends on the Natural ISPF version running on your system.

If using Natural Roll Server, the minimum roll slot size for Roll Server must be 300KB.

Installing Mainframe Navigation

You install Mainframe Navigation together with NaturalONE, using the Software AG Installer. Mainframe Navigation is part of NaturalONE's optional Mainframe Tools component.

Installation on Mainframe Servers

There is no special installation required. Make sure that the products listed under [Prerequisites](#) are installed on the mainframe server.

If you want to access multiple Entire System Servers with the same SYSESM2 parameter file, you can use the dynamic parameter DFS to overwrite the settings in the parameter file, for example, DFS=(ESM62SRV, BKR062, L). For further information on the DFS parameter, see the *Parameter Reference* in the Natural for Mainframes documentation.

Defining the Entire System Server Nodes

When all required products are installed on the mainframe server, you must define all Entire System Server nodes you wish to access with Mainframe Navigation. This is done with Natural ISPF. For detailed information, refer to the section *System Configuration > Entire System Server Node Table* in the *Natural ISPF Administration Guide*.

Ensure that the Entire System Server node table has been edited (at least a minor modification) and saved (command END). Example:

```
----- UPDATE NODES TABLE -----
COMMAND ===>

Node      Description                Name
-----
  ___69   E-machine(Prod) MVS_       DAEE
  ___148  F-machine(Dev.) MVS_       DAEF
  ___248  A-machine(Demo) MVS_       DAEA
50013    Test MVS_____          ESY5999 ENTI NOT ACTIVE
  ___194  OSD5 SI15_____          7.500-S115-2
  ___193  VSE X-machine_____      VSE.ESA.SUPX
55521    Test VSE_____          VSE.ESA.TEST
```

Ensure that the access to all nodes is active and works without any warnings (for example, ESY5...) when saving the nodes table.

Configuring Natural ISPF on the Mainframe Server

Make sure that Natural ISPF is configured correctly on your mainframe server:

- Ensure that the installed subsystems are defined in the configuration member CONFIG: your site's operating systems, Natural and System Automation Tools (SAT).

For detailed information, refer to the section *System Configuration > Editing the Configuration Member CONFIG > Defining Installed Subsystems* in the *Natural ISPF Administration Guide*.

- Ensure that the authorization table of the user who should use Mainframe Navigation has a defined status (compare the Auth attribute in the **Defined Characteristics** column). This can be done by defining the authorization table for the user explicitly, or it can be inherited from a prefix definition, from a (Natural Security-based) user group definition or from the default user definition (which is indicated by an asterisk (*)).

For detailed information, refer to the section *User Definitions* in the *Natural ISPF Administration Guide*.

II

| | |
|--|----|
| ▪ 3 Accessing an Entire System Server Environment | 13 |
| ▪ 4 Managing the Server Nodes | 19 |
| ▪ 5 Listing and Filtering Objects | 25 |
| ▪ 6 General Commands for Managing Different Types of Objects | 29 |

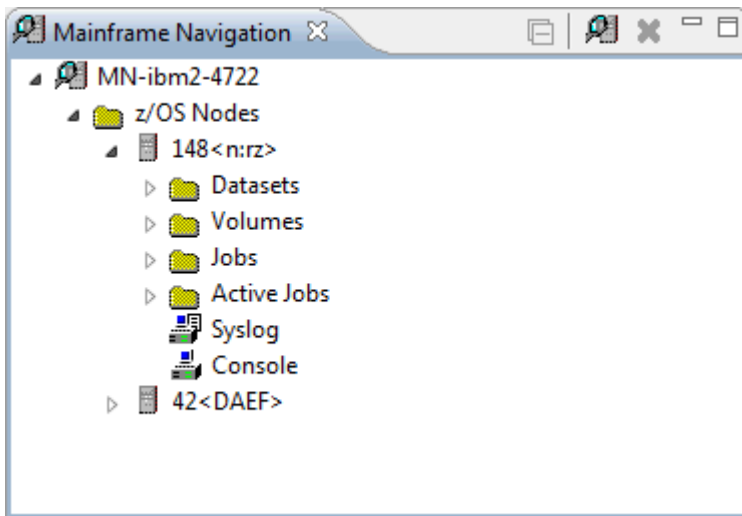
3 Accessing an Entire System Server Environment

- About the Mainframe Navigation View 14
- Showing the Mainframe Navigation View 15
- Mapping a Mainframe Navigation Environment 15
- Unmapping a Mainframe Navigation Environment 17


About the Mainframe Navigation View

To work with Mainframe Navigation, you have to map the mainframe environment in which the Entire System Server nodes have been defined (see also [Defining the Entire System Server Nodes](#)). You do this in the **Mainframe Navigation** view. In the remainder of this documentation, such an environment is referred to as a “Mainframe Navigation environment”.

The **Mainframe Navigation** view contains a tree. All objects that can be managed with Mainframe Navigation are available in the corresponding nodes of the tree.



You can expand or collapse a node in the tree by clicking the plus or minus sign in front of a node. Or you can toggle the state of the node (expanded or collapsed) by double-clicking the name of the node, or by selecting the name of the node then pressing ENTER. A node preceded by a minus sign has been fully expanded.

You can use the  button in the local toolbar to collapse all expanded nodes.

In the **Mainframe Navigation** view, you can select several objects at the same time. You do this using the standard Eclipse functionality (for example, by pressing CTRL and then clicking on each object that you want to include in the selection). This is helpful, for example, if you want to open the editor for several objects at the same time or if you want to delete several objects at the same time.

Tooltips for error messages are shown in the **Mainframe Navigation** view when you move the mouse over entries in the tree which cause an error. Such a tooltip can be shown, for example, for a server node when the server is no longer accessible. Tooltips are also shown for information messages, for example, for a jobs folder when no jobs can be found.

Showing the Mainframe Navigation View

The **Mainframe Navigation** view is not shown by default when you open the NaturalONE perspective. If it is currently not shown, you can display it as described below.

➤ **To show the Mainframe Navigation view**

- 1 From the **Window** menu, choose **Show View > Other**.
- 2 In the resulting **Show View** dialog box, expand the **Software AG NaturalONE** node and select **Mainframe Navigation**.
- 3 Choose the **OK** button.

Mapping a Mainframe Navigation Environment

If you want to connect to a Mainframe Navigation environment for the first time, you have to map it as described below. Once you have mapped an environment, a node for this environment is automatically shown in the **Mainframe Navigation** view. It is possible to map the same environment more than once, for example, if you want to have sessions with different session parameters.

➤ **To map a Mainframe Navigation environment**

- 1 Go to the **Mainframe Navigation** view.
- 2 Invoke the context menu and choose **Map**.

Or:

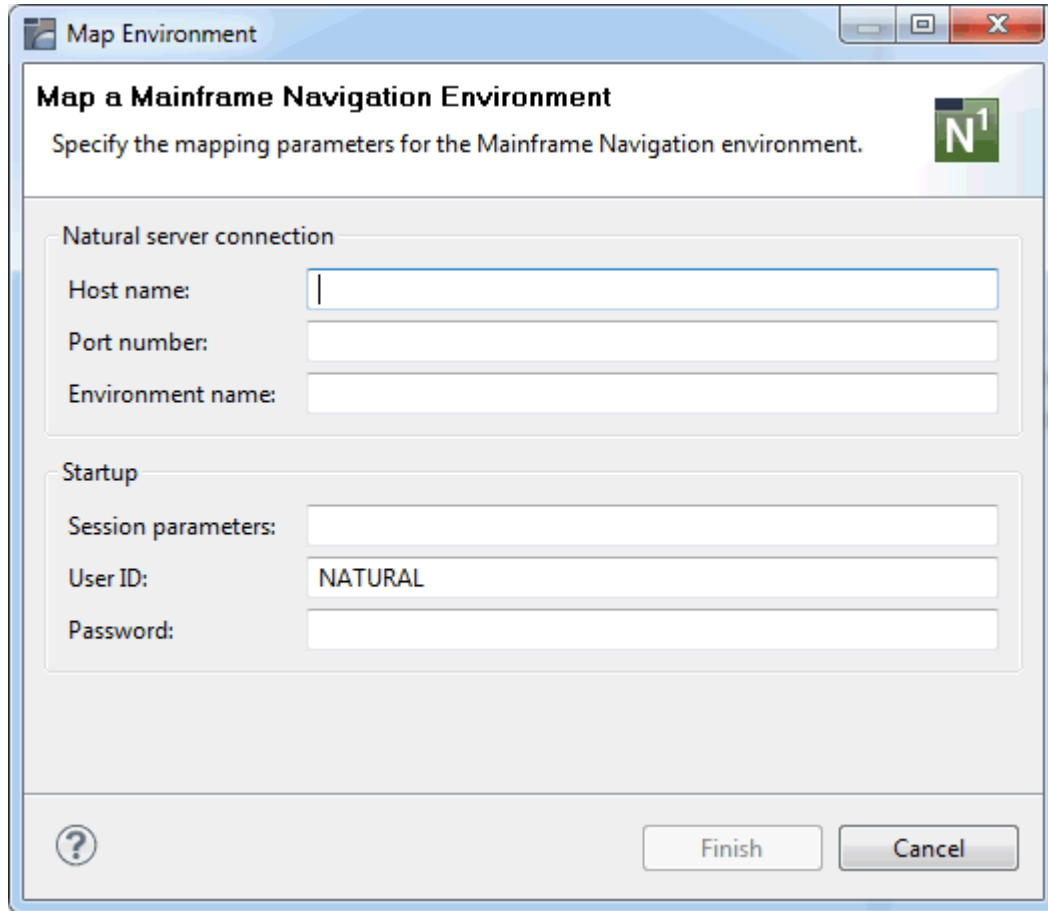
Choose the following icon in the local toolbar:



Or:

Press CTRL+ALT+M.

The following dialog box appears.



3 Specify the following information:

| Option | Description |
|---------------------------|---|
| Host name | The name of the Natural server. |
| Port number | The TCP/IP port number of the Natural server. |
| Environment name | The name that is to appear in the Mainframe Navigation view. A default name will be created automatically. If you want, you can enter a more specific environment name. |
| Session parameters | Optional. If dynamic parameters are required for the Natural environment, specify them in this text box. |
| User ID | The user ID that is to be used for mapping the Natural environment. This text box is initially blank. When you have previously mapped an environment, the user name that you entered the last time is automatically provided. |
| Password | Optional. If Natural Security is active on the Natural server, specify the required password in this text box. |

 **Note:** If you do not know the host name and port number for your Natural server, ask your administrator.

- 4 Choose the **Finish** button.

A node for the specified environment is now shown in the **Mainframe Navigation** view. For information on how to proceed, see [Managing the Server Nodes](#).

Unmapping a Mainframe Navigation Environment

When you unmap a Mainframe Navigation environment, its node is removed from the **Mainframe Navigation** view.

➤ To unmap a Mainframe Navigation environment

- 1 In the **Mainframe Navigation** view, select the node for the Mainframe Navigation environment that you want to unmap.
- 2 Invoke the context menu and choose **Unmap**.

Or:

Choose the following icon in the local toolbar:



Or:

Press CTRL+ALT+U.

You are asked whether you really want to delete the Mainframe Navigation node.


- 3 Choose the **Yes** button to confirm the deletion.

4 Managing the Server Nodes

- Displaying the Server Nodes 20
- Logging on to a Server Node 20
- Displaying the Properties of a Server Node 21

Displaying the Server Nodes

To manage the contents of a server node, you first have to expand an operating system node in the **Mainframe Navigation** view.

 **Note:** Currently, only the z/OS operating system is supported. Therefore, **z/OS Nodes** is the only operating system node which is currently shown.

The features which can be used depend on your ISPF profile and your security system on the mainframe.

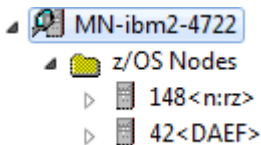
> To display the server nodes

- 1 In the **Mainframe Navigation** view, expand the top-level node for the environment that you have mapped.

The operating system nodes are then shown in the tree.

- 2 Expand an operating system node to display all defined and active server nodes.

Example:



Logging on to a Server Node

Logging on to a server node is necessary if you want to change your user ID on the mainframe, or if the automatic logon option for the node has been set to "NO" (see also [Displaying the Properties of a Node](#)).

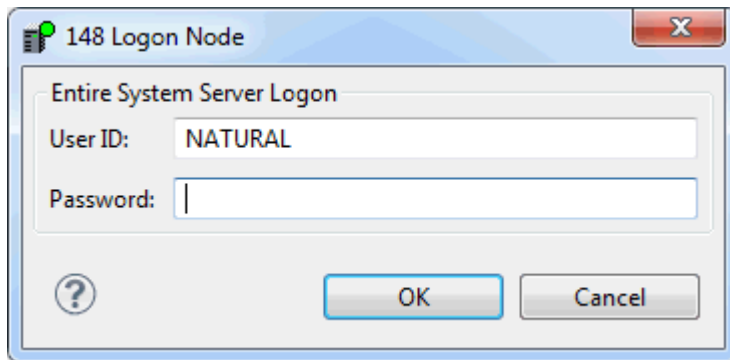
> To log on to a server node

- 1 In the **Mainframe Navigation** view, select the appropriate server node.
- 2 Invoke the context menu and choose **Logon**.

Or:

Press CTRL+ALT+L.

The following dialog box appears:



- 3 Enter the user ID that is required for logging on to the server node.
- 4 Enter the password.
- 5 Choose the **OK** button.

Displaying the Properties of a Server Node

You can display information about a server node.

 **Note:** See also *Displaying the Properties*.

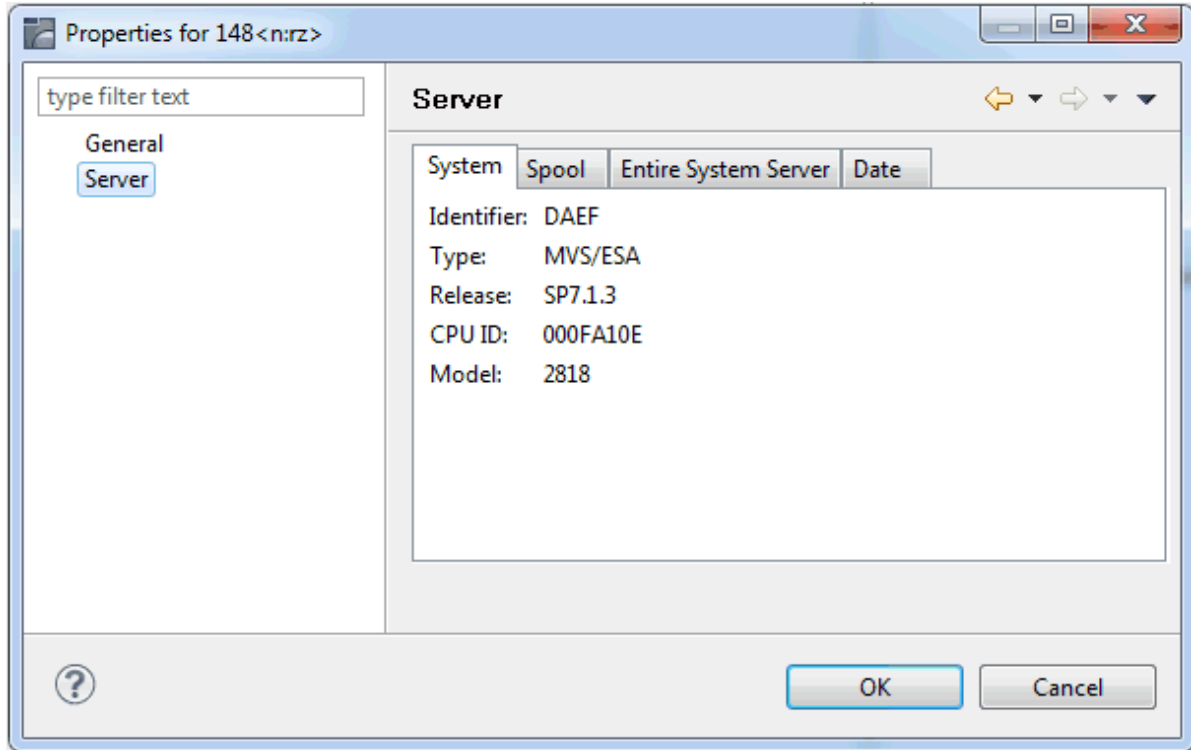
➤ To display the properties of a server node

- 1 In the **Mainframe Navigation** view, select the appropriate server node.
- 2 Invoke the context menu and choose **Properties**.

Or:

Press ALT+ENTER.

A dialog box such as the following appears. Two pages are provided. Detailed information is provided on the **Server** page. The content of this dialog box depends on the node which has been selected. Example for z/OS:



The following information is provided in this dialog box:

| Tab | Option | Description |
|----------------------|------------|--|
| System | Identifier | Logical identifier of the node. |
| | Type | Operating system type. |
| | Release | Release number of the operating system. |
| | CPU ID | CPU identification number. |
| | Model | Machine-type number of the CPU. |
| Spool | Type | Spooling system type. |
| | Release | Release number of spooling system. |
| Entire System Server | Node | Node number. |
| | Job name | Job name of the Entire System Server node. |
| | Identifier | Logical identifier of the node. |
| | Version | Version number of this Entire System Server. |
| | Security | Security system defined in Entire System Server startup parameters. |
| | Auto logon | Automatic logon option for Entire System Server. If "YES" is specified in the corresponding startup parameter, Entire System Server will perform an automatic logon to the active security system using *INIT-USER as the user ID. |
| | APF | States whether Entire System Server is running APF-authorized. Possible values: YES, NO. |

| Tab | Option | Description |
|------|-------------------|--|
| | SMF | SMF record number written by Entire System Server. |
| Date | Local date | Current date in format YYYY-MM-DD. |
| | Local time | Current time of day. |
| | Difference to GMT | Time difference in hours between the local time and GMT. |
| | Date of last IPL | Date of last system IPL in format YYYY-MM-DD. |
| | Time of last IPL | Time of last system IPL. |

5 Listing and Filtering Objects

- Listing an Object 26
- Filtering an Object 26

Listing an Object

When you display a list of objects, a default filter is often applied automatically. In many cases, this is the ID that you have used to log on. This causes that only those objects are shown where the names start with your user ID.

Filtering an Object

This section provides a brief overview on how to filter objects. For information on how to filter a specific type of object, see the appropriate section later in this documentation.

Before **listing** the objects contained in a specific folder, you might want to employ a filter in order to reduce the number of shown objects. Only the objects which satisfy the filter criteria will then be listed.

The filter criteria last entered are used the next time you expand the corresponding folder in the tree. These filter criteria are retained even after the session has ended and will be used the next time you start Mainframe Navigation.

When specifying filter criteria, you can use the following wildcard characters:

- **Asterisk**

An asterisk (*) selects object names with any character string. For example, when you specify "FSM*6", all object names are selected which start with "FSM" and end with "6" ("FSM006" or "FSM016"). If "6" is located at an unknown position within the name, you specify the name as "FSM*6*" in order to also select names such as "FSM600" or "FSM061".

- **Underscore**

An underscore (_) selects object names with one character in the place of each underscore. For example, when you specify "FSM_6", object names such as "FSM06" or "FSM16" are selected.

Take care, when an object name contains dots as delimiters. It is not possible to use an underscore instead of a dot. For example, it is possible to specify "KO_._B*", but is not possible to specify "KO__B*". As a rule, underscores should only be used with for objects with names. It is not possible to use them for volumes which are offline.

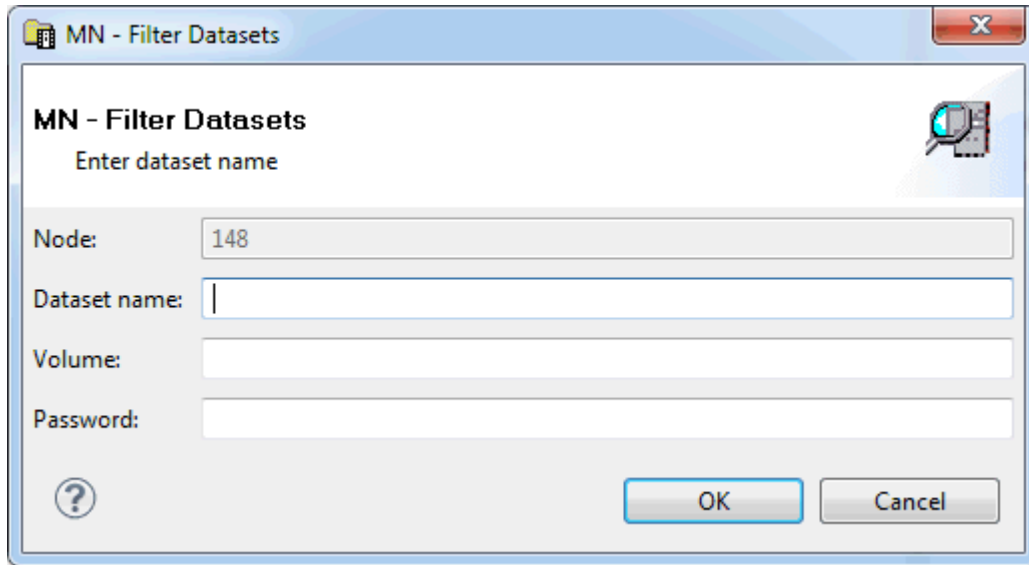
➤ **To define a filter**

- 1 In the **Mainframe Navigation** view, select the appropriate object.
- 2 Invoke the context menu and choose **Filter**.

Or:

Press F3.

A dialog box appears. The filter criteria that can be defined in this dialog box depend on the object which has been selected. The following example shows the dialog box which appears when have selected the folder which contains the z/OS datasets.



When a filter has already been defined for the selected object, the filter criteria are shown in this dialog box.

- 3 Enter the filter criteria. For example, in the above dialog box, enter a dataset name such as the following:

```
JWO.COMM.*
```

- 4 Choose the **OK** button.

The filter is immediately reflected in the **Mainframe Navigation** view.

6 General Commands for Managing Different Types of Objects

- General Information 30
- Editing an Object 30
- Browsing an Object 31
- Deleting an Object 32
- Displaying the Properties 32
- Refreshing the Display 33
- Using the Console View in Eclipse 33

General Information

The commands described in this chapter work similarly with all types of objects. The descriptions below are not repeated in later sections of this documentation which deal with the different types of objects.

Editing an Object

You can edit datasets and members.

When you edit an object, an editor window appears in which you can modify the content of the object.

➤ To edit an object

- 1 In the **Mainframe Navigation** view, select the appropriate object.
- 2 Invoke the context menu and choose **Edit**.

Or:

Press CTRL+E.

Or:

Double-click the appropriate object.



Note: When you double-click an object in the **Mainframe Navigation** view, an editor window is invoked for that object. Whether the contents of the editor window can be modified depends on the commands that are available for the object. When the **Edit** command is available for the object, the regular editor window is invoked and the content of the object can be modified. When only the **Browse** command is available for the object (and no **Edit** command), the **read-only editor window** is invoked.

The selected object appears in an editor window.

- 3 Apply all required changes to the object.
- 4 Save the object using the standard Eclipse functionality (for example, press CTRL+S).

Commands for Editing an Object

When you invoke the context menu in the editor window, you can see the available editor commands and the corresponding keyboard shortcuts. These include, for example, **Undo** (CTRL+Z), **Save** (CTRL+S), **Cut** (CTRL+X), **Copy** (CTRL+C) and **Paste** (CTRL+V).

It is also possible to save the current contents of the editor window to a new object. To do so, you use the **Save As** command from the **File** menu. A dialog will then appear in which you have to specify all required information.

You can also use standard Eclipse commands such as **Select All** or **Find/Replace** from the **Edit** menu.

Browsing an Object

You can display an object in read-only mode. The content of the object is then displayed a read-only editor window. You can copy the contents, but you cannot modify it.

You can browse all objects which can also be **edited**. In addition, it is also possible to browse sysout datasets, jobs and active jobs.

Browsing is limited to a record length of 2500 bytes. If a record is longer, it is truncated and only the first 2500 bytes are displayed.

> To browse an object

- 1 In the **Mainframe Navigation** view, select the appropriate object.
- 2 Invoke the context menu and choose **Browse**.

Or:

Press CTRL+B.



Note: When only the **Browse** command is available for the object (and no **Edit** command), you can also double-click the object in order to invoke the read-only editor window.

The selected object appears in a read-only editor window.

Commands for Browsing an Object

When you invoke the context menu in a read-only editor window, you can see the available commands and the corresponding keyboard shortcuts. These include, for example, **Copy** (CTRL+C) and **Refresh** (F5).

You can also use standard Eclipse commands such as **Select All** or **Find/Replace** from the **Edit** menu (keep in mind, that the “replace” functionality is disabled in the read-only editor window).

Deleting an Object

You can delete datasets, members, jobs, and sysout datasets.

➤ To delete an object

- 1 In the **Mainframe Navigation** view, select the appropriate object.
- 2 Invoke the context menu and choose **Delete**.

Or:

Press DEL.

A dialog box appears, asking to confirm the delete function for the selected object.

- 3 Choose the **OK** button to delete the object.

Displaying the Properties

When you select a node in the **Mainframe Navigation** view, the corresponding properties are automatically shown in the **Properties** view. The information that is shown in the **Properties** view depends on the type of node that is currently selected.

Brief information on the selected node is also shown in the status line of the Eclipse window. This includes the name of the node and the name of the environment.

You can also invoke a properties dialog box for a node using the **Properties** command from the context menu. In many cases, a properties dialog box provides more information than the **Properties** view. For detailed information on the information shown in a properties dialog box, see the appropriate section later in this documentation.

Refreshing the Display

You can refresh the contents of an expandable node in the **Mainframe Navigation** view. Or you can refresh text or code displayed in a read-only editor window (that is, in a window that has been invoked using the **Browse** command). The most current information from the server is then shown.

➤ **To refresh the display**

- 1 In the **Mainframe Navigation** view, select the node that is to be refreshed.

Or:

Activate the read-only editor window that is to be refreshed.


- 2 Invoke the context menu and choose **Refresh**.

Or:

Press F5.

Using the Console View in Eclipse

When the **Console output** option has been selected on the **Natural > Builder** page of the Natural-specific preferences (see *Setting the Preferences* in *Using NaturalONE*), the **Console** view of Eclipse shows the requests that are sent to the server and the corresponding responses from the server. This is different from the information which is shown for the **console** and **system log** in the **Mainframe Navigation** view which only show the information from the server.

As soon as Mainframe Navigation starts writing output to the **Console** view, a Mainframe Navigation console is available in the list of selected consoles. See the "Display Selected Console" icon () which is shown in the local toolbar of the **Console** view.

III

Managing z/OS Objects

This part covers the following topics:

[z/OS Datasets](#)

[PDS Members](#)

[z/OS Volumes](#)

[z/OS Jobs](#)

[z/OS Active Jobs](#)

7 z/OS Datasets

| | |
|---|----|
| ▪ Filtering z/OS Datasets | 38 |
| ▪ Compressing a z/OS Dataset | 39 |
| ▪ Displaying the Properties of a z/OS Dataset | 39 |

In the **Mainframe Navigation** view, the z/OS datasets are shown when you expand the **Datasets** folder of a z/OS node.

Filtering z/OS Datasets

Before displaying z/OS datasets, you can define a filter so that only those datasets are shown which correspond to your filter criteria.

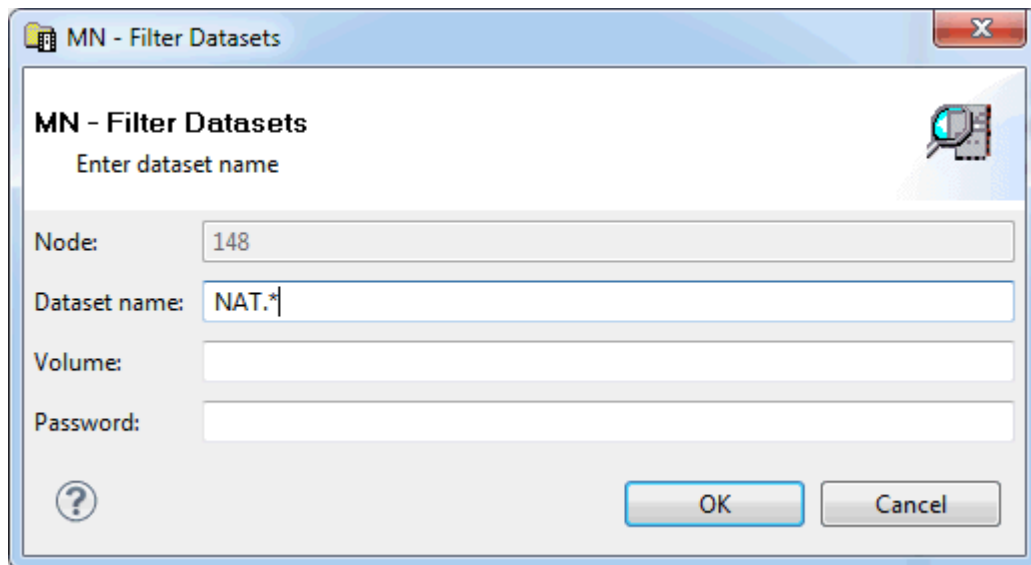
> To define a filter

- 1 In the **Mainframe Navigation** view, select the **Datasets** folder in the appropriate node.
- 2 Invoke the context menu and choose **Filter**.

Or:

Press F3.

The following dialog box appears:



- 3 Enter the filter criteria.

| Option | Description |
|--------------|--|
| Dataset name | Enter the datasets that are to be shown. For example, when you specify "ABC*", only the dataset names starting with these characters will be shown. |
| Volume | If you do not specify a volume, the dataset list is created from the catalog. If you do specify a volume, the dataset list is created from the VTOC of that volume. |
| Password | Enter the system password if dataset is protected. |

- 4 Choose the **OK** button.

Compressing a z/OS Dataset

You can compress a partitioned z/OS dataset (PDS).

➤ To compress a z/OS dataset

- 1 In the **Mainframe Navigation** view, select a partitioned dataset either in the **Datasets** or **Volumes** folder of the appropriate node.
- 2 Invoke the context menu and choose **Compress**.

A dialog box appears, asking to confirm the compress function for the selected object.

- 3 Choose the **OK** button to compress the dataset.

Displaying the Properties of a z/OS Dataset

You can display information about a z/OS dataset.

➤ To display the properties of a z/OS dataset

- 1 In the **Mainframe Navigation** view, select a dataset in the **Datasets** folder.
- 2 Invoke the context menu and choose **Properties**.

Or:

Press ALT+ENTER.

A properties dialog box appears.

Sequential and Partitioned Datasets

The following information is shown on the **Server** page of the properties dialog box:

| Option | Description | |
|----------------------------|---|---|
| Volume | Serial number of the volume on which the dataset is allocated. | |
| Device type | If a volume is not specified, this is the generic identifier from which a volume is to be selected (e.g. 3380). | |
| Organization | For example: | |
| | PO | PDS |
| | PS | Sequential dataset |
| | DA | Direct access |
| Record format | For example: | |
| | FB | Fixed block |
| | VB | Variable block |
| | FBA | Fixed block, ANSI control characters |
| Record length | Logical record length in bytes. | |
| Block size | Block size in bytes. | |
| Allocation type | Space type for dataset. Possible values: | |
| | BLK | Blocks |
| | CYL | Cylinders |
| | TRK | Tracks |
| First extent | Initial quantity allocated. | |
| Second extent | Additional quantity to be allocated if dataset fills. | |
| Security | Security status. Possible values: | |
| | NONE | Not password-protected. |
| | READ | Password-protected for read and write operations. |
| | WRITE | Password-protected for write operations. |
| Allocated cylinders/tracks | Number of cylinders or tracks allocated. | |
| Allocated extents | Number of extents, 1 to 16. | |
| Percentage used | Percentage of dataset used. | |
| Creation date | Dataset creation date in format YYYY-MM-DD. | |
| Last reference | Date of last access in format YYYY-MM-DD. | |
| Expiration date | Date when the dataset expires in format YYYY-MM-DD. Until this date is reached, each attempt to update or delete the dataset causes a console message, requiring an operator reply. | |
| Partitioned dataset | These fields appear only if the dataset is partitioned. | |
| | Number of members | Number of members in the dataset. |

| Option | Description | |
|----------------|---|---|
| | Directory blocks | Number of directory blocks. |
| | Unused blocks | Number of unused directory blocks. |
| SMS attributes | These fields appear only if SMS attributes have been defined for the dataset during allocation. | |
| | Management class | The management class used to obtain the management-related data for SMS (migration, backup and retention criteria) to allocate the dataset. |
| | Storage class | The storage class used to obtain the storage-related data for dataset allocation. |
| | Data class | The data class used to obtain the data-related information (SPACE, LRECL, etc.) for dataset allocation. |

8 PDS Members

- Filtering PDS Members 44
- Adding a New PDS Member 45
- Submitting a PDS Member 46
- Displaying the Properties of a PDS Member 46

In the **Mainframe Navigation** view, the PDS members are shown when you expand a partitioned dataset.

Filtering PDS Members

Before displaying PDS members, you can define a filter so that only those members are shown which correspond to your filter criteria.

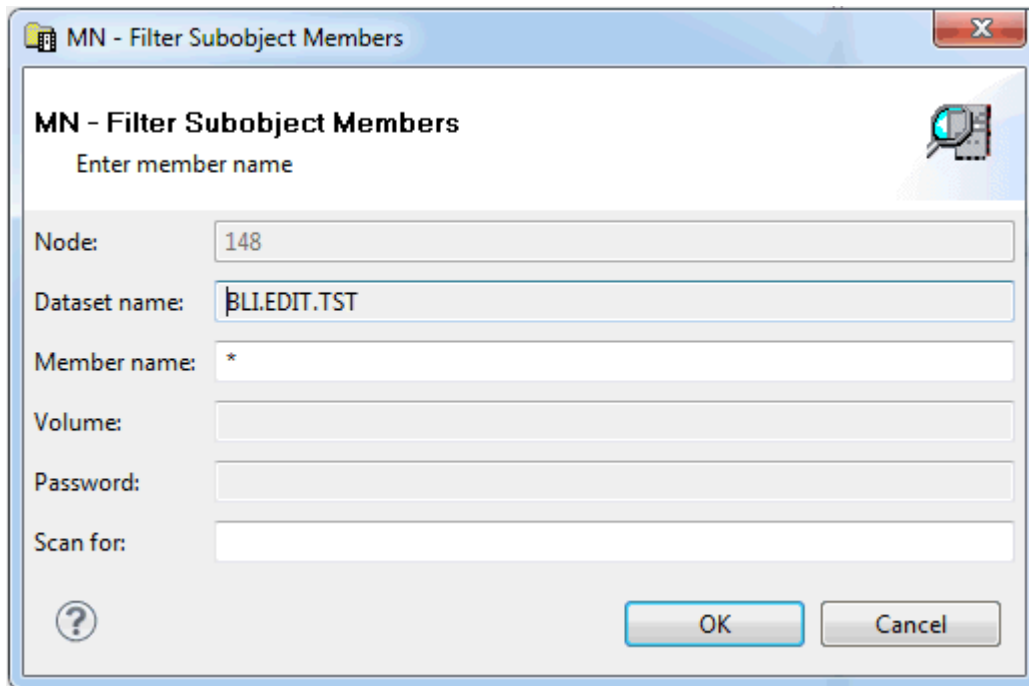
> **To define a filter**

- 1 In the **Mainframe Navigation** view, select the appropriate dataset in the **Datasets** folder.
- 2 Invoke the context menu and choose **Filter**.

Or:

Press F3.

A dialog box appears.



- 3 Enter the filter criteria.

| Option | Description |
|-------------|---|
| Member name | The members that are to be shown. You can use a combination of strings and wildcards (* and _) to display the members matching the member name pattern. |
| Scan for | When you specify a character string, only the members containing this string will be shown. |

- 4 Choose the **OK** button.

Adding a New PDS Member

You can add a new PDS member to a z/OS dataset.

➤ To add a new PDS member

- 1 In the **Mainframe Navigation** view, select the appropriate dataset in the **Datasets** folder.
- 2 Invoke the context menu and choose **New**.

Or:

Press CTRL+N.

An empty editor window appears for the new member.

- 3 Enter the data for the new member.

See also [Commands for Editing an Object](#).

- 4 Save the new member using the standard Eclipse functionality (for example, press CTRL+S).

A dialog box appears.

- 5 Enter the following information:

| Option | Description |
|----------|--|
| Member | A name for the new member. |
| Password | System password if dataset is protected. |



Note: It is recommended that you do not change any other values and keep the current location for the new member.

- 6 Choose the **OK** button.

Submitting a PDS Member

You can submit a PDS member to the operating system.

➤ To submit a PDS member

- 1 Select a member in the **Mainframe Navigation** view.
- 2 Invoke the context menu and choose **Submit**.

Or:

Press CTRL+U.

A dialog box appears, confirming that the member has been submitted.

Displaying the Properties of a PDS Member

You can display information about a PDS member. Different types of information are shown for normal PDS members and for PDS members of a load library.

➤ To display the properties of a PDS member

- 1 Select a member in the **Mainframe Navigation** view.
- 2 Invoke the context menu and choose **Properties**.

Or:

Press ALT+ENTER.

A properties dialog box appears.

The following topics are covered below:

- [Normal PDS Member](#)

- PDS Member of a Load Library

Normal PDS Member

The properties dialog box for a normal PDS member provides the following information on the **Server** page:

| Tab | Option | Description | |
|------------|----------------------|---|--------------------------------------|
| Member | Version | Version number of the member. | |
| | Creation date | Date in format YYYY-MM-DD when the member was created. | |
| | Last modification | Date in format YYYY-MM-DD when the member was last modified. | |
| | User ID | User who last modified the member. | |
| | Initial | Initial size of this version. | |
| | Size | Number of lines in the member. | |
| Dataset | Device type | The specified volume or the generic identifier from which a volume is to be selected (for example, 3380). | |
| | Organization | For example: | |
| | | PO | PDS |
| | | PS | Sequential dataset |
| | | DA | Direct access |
| | Record format | For example: | |
| | | FB | Fixed block |
| | | VB | Variable block |
| | | FBA | Fixed block, ANSI control characters |
| | Record length | Record length in bytes. | |
| Block size | Block size in bytes. | | |

PDS Member of a Load Library

The properties dialog box for a PDS member of a load library provides the following information on the **Server** page:

| Tab | Option | Description |
|--------|-------------|--|
| Member | Length | Member's length in bytes. |
| | Hex | Member's length in bytes in hexadecimal format. |
| | Attribute | The member's attributes in keyword format. The relevant keywords are separated by one blank. For possible values, see the description of the MODULE-ATTRIBUTES field in the LIB-DIRECTORY view in the <i>Entire System Server User's Guide</i> . |
| | Entry point | Entry point of the load module. |

| Tab | Option | Description |
|---------|--|--|
| | Linkage date | Date of linkage/zap in format YYYY-MM-DD. |
| | Linkage editor | Name of linkage/zap editor. |
| | Version | Version of linkage/zap editor. |
| | ZAPS | Displays the number of applied zaps. |
| | Unresolved | Displays the number of unresolved external references. |
| Dataset | Provides the same information as the properties dialog box for a normal PDS member. See the above table. | |

9 z/OS Volumes

- Filtering z/OS Volumes 50
- Filtering Datasets on a z/OS Volume 51
- Displaying the Properties of a z/OS Volume 52

In the **Mainframe Navigation** view, the z/OS volumes are shown when you expand the **Volumes** folder of a z/OS node.

Filtering z/OS Volumes

Before displaying z/OS volumes, you can define a filter so that only those volumes are shown which correspond to your filter criteria.

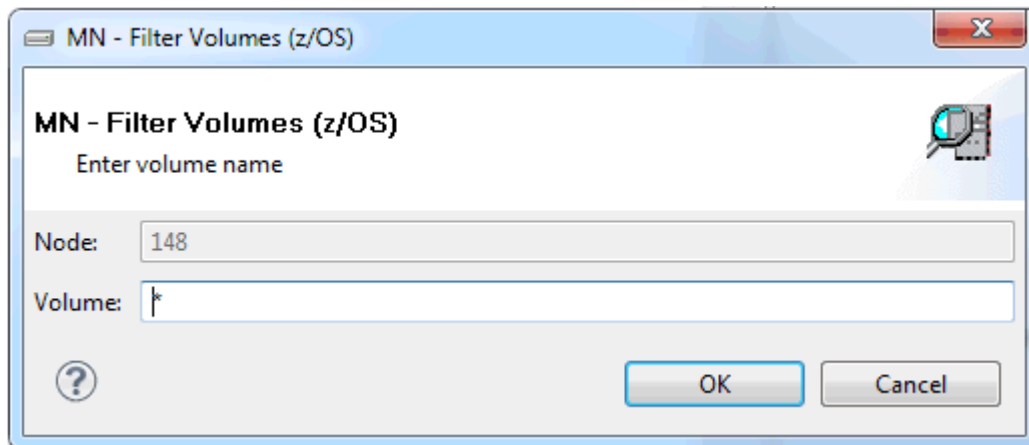
> To define a filter

- 1 In the **Mainframe Navigation** view, select the **Volumes** folder in the appropriate server node.
- 2 Invoke the context menu and choose **Filter**.

Or:

Press F3.

The following dialog box appears:



- 3 Enter the filter criteria for the volumes that are to be shown. You can use a combination of strings and wildcards (* and _) to display the volumes matching the volume name pattern.
- 4 Choose the **OK** button.

Filtering Datasets on a z/OS Volume

Before displaying datasets on a z/OS volume, you can define a filter so that only those datasets are shown which correspond to your filter criteria.

➤ To define a filter

- 1 Select a volume in the **Mainframe Navigation** view.
- 2 Invoke the context menu and choose **Filter**.

Or:

Press F3.

The following dialog box appears:

- 3 Enter the filter criteria.

| Option | Description |
|--------------|--|
| Dataset name | The datasets that are to be shown. You can use a combination of strings and wildcards (* and _) to display the datasets matching the dataset name pattern. |
| Password | System password if volume is protected. |

- 4 Choose the **OK** button.

Displaying the Properties of a z/OS Volume

You can display information about a z/OS volume.

➤ **To display the properties of a z/OS volume**

- 1 Select a volume in the **Mainframe Navigation** view.
- 2 Invoke the context menu and choose **Properties**.

Or:

Press ALT+ENTER.

A properties dialog box appears.

The following information is shown on the **Server** page of the properties dialog box:

| Option | Description |
|---------------------|--|
| Series | Device series. |
| Unit | Unit address. |
| Tracks per cylinder | Number of tracks per cylinder. |
| Percentage used | Percentage of disk used. |
| Total space | Total number of cylinders on disk pack. |
| Free space | Number of free cylinders and tracks on disk pack. |
| Largest unit | Number of cylinders and tracks in largest free extent. |
| Free extents | Number of free extents on disk pack. |
| SMS control | SMS-controlled device/unit (YES, NO). |

10 z/OS Jobs

| | |
|--|----|
| ▪ Filtering z/OS Jobs | 54 |
| ▪ Displaying the Condition Codes of a z/OS Job | 55 |

In the **Mainframe Navigation** view, the z/OS jobs are shown when you expand the **Jobs** folder of a z/OS node.

Filtering z/OS Jobs

Before displaying z/OS jobs, you can define a filter so that only those jobs are shown which correspond to your filter criteria.

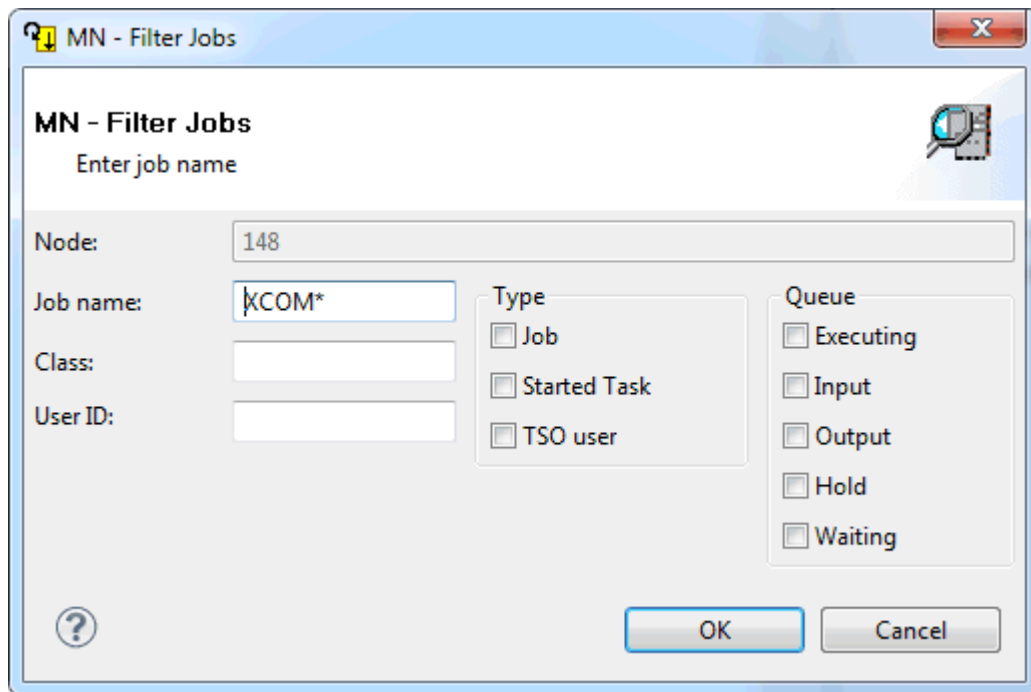
> To define a filter

- 1 In the **Mainframe Navigation** view, select the **Jobs** folder in the appropriate node.
- 2 Invoke the context menu and choose **Filter**.

Or:

Press F3.

The following dialog box appears:



- 3 Enter the filter criteria.

| Option | Description | |
|----------|--|---------------------------------------|
| Job name | Job name on the job card. You can use a combination of strings and wildcards (* and _) to display the jobs matching the job name pattern. | |
| Class | JES job class or output class. | |
| User ID | ID of the user who submitted the job. | |
| Type | <p>If you are only interested in a specific type of job, you can activate one or more of the following check boxes:</p> <p>Job (standard operating system job) Started task TSO user</p> <p>When none of these check boxes is selected, all information is always shown.</p> | |
| Queue | If you are only interested in specific queues, you can activate up to four check boxes for the JES queue type: | |
| | Executing | Executing queue. |
| | Input | Input queue (held and non-held jobs). |
| | Output | Output queue. |
| | Hold | Output queue jobs on hold. |
| | Waiting | Input queue jobs on hold. |
| | When none of these check boxes is selected, the information from all queues is always shown. | |

- 4 Choose the **OK** button.

Displaying the Condition Codes of a z/OS Job

When you display the condition codes of a job, they are shown in a read-only editor window.

» To display the condition codes of a z/OS job

- 1 Select a job in the **Mainframe Navigation** view.
- 2 Invoke the context menu and choose **Condition Codes**.

Or:

Press CTRL+ALT+C.

A read-only editor window appears.

See also *Commands for Browsing an Object*.

11 z/OS Active Jobs

- Filtering z/OS Active Jobs 58
- Displaying the Condition Codes of a z/OS Active Job 59

In the **Mainframe Navigation** view, z/OS active jobs are shown when you expand the **Active Jobs** folder.

Filtering z/OS Active Jobs

Before displaying z/OS active jobs, you can define a filter so that only those active jobs are shown which correspond to your filter criteria.

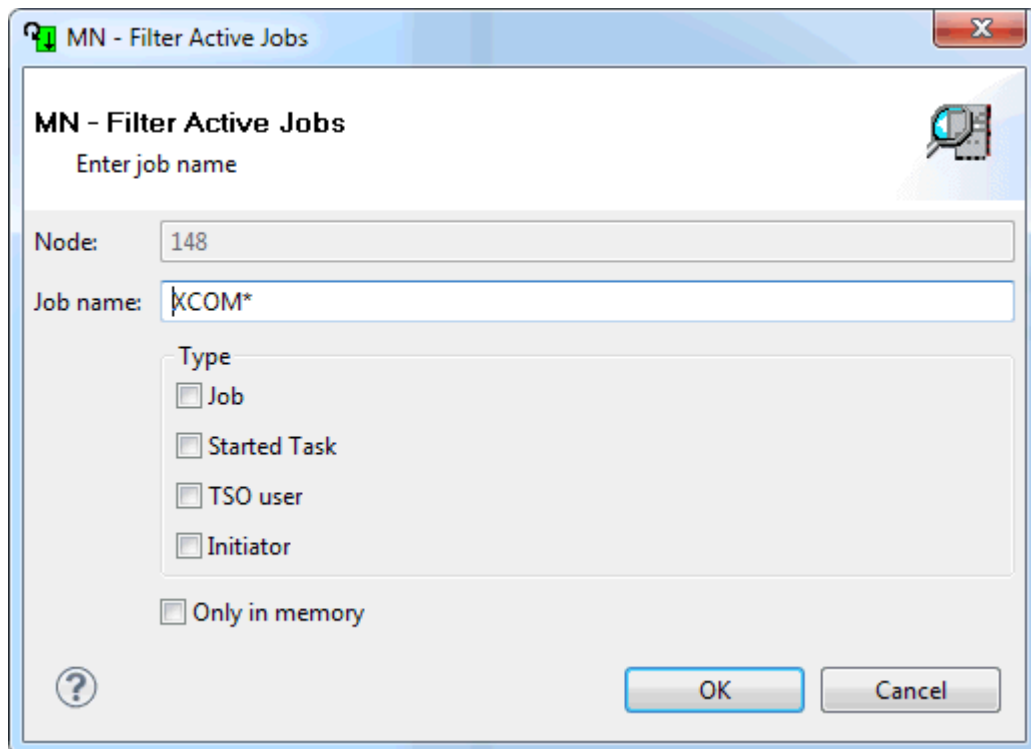
> To define a filter

- 1 In the **Mainframe Navigation** view, select the **Active Jobs** folder in the appropriate node.
- 2 Invoke the context menu and choose **Filter**.

Or:

Press F3.

The following dialog box appears:



- 3 Enter the filter criteria.

| Option | Description |
|----------------|---|
| Job name | Job name. You can use a combination of strings and wildcards (* and _) to display the jobs matching the job name pattern. |
| Type | <p>If you are only interested in a specific type of job, you can activate up to three check boxes:</p> <p>Job (standard operating system job) Started task TSO user Initiator (job entry system initiator)</p> <p>When none of these check boxes is selected, all information is always shown.</p> |
| Only in memory | Activate this check box to display only in-memory active jobs. |

- 4 Choose the **OK** button.

Displaying the Condition Codes of a z/OS Active Job

When you display the condition codes of a job, they are shown in a read-only editor window.

➤ To display the condition codes of a z/OS active job

- 1 Select an active job in the **Mainframe Navigation** view.
- 2 Invoke the context menu and choose **Condition Codes**.

Or:

Press CTRL+ALT+C.

A read-only editor window appears.

See also *Commands for Browsing an Object*.

IV

| | |
|-----------------------|----|
| ■ 12 System Log | 63 |
| ■ 13 Console | 65 |

12 System Log

- Browsing the System Log 64

Each z/OS node in the **Mainframe Navigation** view contains an entry for the system log (Syslog).

Browsing the System Log

The system log is shown in a read-only editor window. You can copy the contents, but you cannot modify it.

➤ To browse the system log

- 1 In the **Mainframe Navigation** view, select **Syslog** in the appropriate node.
- 2 Invoke the context menu and choose **Browse**.

Or:

Press CTRL+B.

The system log is shown in a read-only editor window. You are automatically positioned to the most recent entries at the bottom of the window.

See also [Commands for Browsing an Object](#).

13 Console

- Browsing the Console 66

Each z/OS node in the **Mainframe Navigation** view contains an entry for the console.

Browsing the Console

The console is shown in a read-only editor window. You can copy the contents, but you cannot modify it.

➤ To browse the console

- 1 In the **Mainframe Navigation** view, select **Console** in the appropriate node.
- 2 Invoke the context menu and choose **Browse**.

Or:

Press CTRL+B.

The console is shown in a read-only editor window. You are automatically positioned to the most recent console messages at the bottom of the window. The window always shows up to 100 lines. Using the **Refresh** command, you can refresh the contents of this window.

See also [Commands for Browsing an Object](#).