

Entire Connection

Format Converter

Version 9.1.2

October 2019

This document applies to Entire Connection Version 9.1.2 and all subsequent releases.

Specifications contained herein are subject to change and these changes will be reported in subsequent release notes or new editions.

Copyright © 1984-2019 Software AG, Darmstadt, Germany and/or Software AG USA, Inc., Reston, VA, USA, and/or its subsidiaries and/or its affiliates and/or their licensors.

The name Software AG and all Software AG product names are either trademarks or registered trademarks of Software AG and/or Software AG USA, Inc. and/or its subsidiaries and/or its affiliates and/or their licensors. Other company and product names mentioned herein may be trademarks of their respective owners.

Detailed information on trademarks and patents owned by Software AG and/or its subsidiaries is located at <http://softwareag.com/licenses>.

Use of this software is subject to adherence to Software AG's licensing conditions and terms. These terms are part of the product documentation, located at <http://softwareag.com/licenses/> and/or in the root installation directory of the licensed product(s).

This software may include portions of third-party products. For third-party copyright notices, license terms, additional rights or restrictions, please refer to "License Texts, Copyright Notices and Disclaimers of Third-Party Products". For certain specific third-party license restrictions, please refer to section E of the Legal Notices available under "License Terms and Conditions for Use of Software AG Products / Copyright and Trademark Notices of Software AG Products". These documents are part of the product documentation, located at <http://softwareag.com/licenses> and/or in the root installation directory of the licensed product(s).

Use, reproduction, transfer, publication or disclosure is prohibited except as specifically provided for in your License Agreement with Software AG.

Document ID: PCC-CONVERTER-912-20191006

Table of Contents

Preface	v
1 About this Documentation	1
Document Conventions	2
Online Information and Support	2
Data Protection	3
2 Getting Started	5
Starting the Format Converter	6
Creating a Format File	7
Converting a File	11
Startup Parameters	12
3 File and Field Formats	15
Supported File Formats	16
Unsupported File Formats	16
Overview of Field Formats in a Format File	17

Preface

Using the Format Converter, you can convert data to another format (for example, you can convert Lotus data to Excel format). The original file is not altered during conversion.

This section provides the following information:

[Getting Started](#)

[File and Field Formats](#)

1 About this Documentation

- Document Conventions 2
- Online Information and Support 2
- Data Protection 3

Document Conventions

Convention	Description
Bold	Identifies elements on a screen.
Monospace font	Identifies service names and locations in the format <i>folder.subfolder.service</i> , APIs, Java classes, methods, properties.
<i>Italic</i>	Identifies: Variables for which you must supply values specific to your own situation or environment. New terms the first time they occur in the text. References to other documentation sources.
Monospace font	Identifies: Text you must type in. Messages displayed by the system. Program code.
{ }	Indicates a set of choices from which you must choose one. Type only the information inside the curly braces. Do not type the { } symbols.
	Separates two mutually exclusive choices in a syntax line. Type one of these choices. Do not type the symbol.
[]	Indicates one or more options. Type only the information inside the square brackets. Do not type the [] symbols.
...	Indicates that you can type multiple options of the same type. Type only the information. Do not type the ellipsis (...).

Online Information and Support

Software AG Documentation Website

You can find documentation on the Software AG Documentation website at <http://documentation.softwareag.com>. The site requires credentials for Software AG's Product Support site Empower. If you do not have Empower credentials, you must use the TECHcommunity website.

Software AG Empower Product Support Website

If you do not yet have an account for Empower, send an email to empower@softwareag.com with your name, company, and company email address and request an account.

Once you have an account, you can open Support Incidents online via the eService section of Empower at <https://empower.softwareag.com/>.

You can find product information on the Software AG Empower Product Support website at <https://empower.softwareag.com>.

To submit feature/enhancement requests, get information about product availability, and download products, go to [Products](#).

To get information about fixes and to read early warnings, technical papers, and knowledge base articles, go to the [Knowledge Center](#).

If you have any questions, you can find a local or toll-free number for your country in our Global Support Contact Directory at https://empower.softwareag.com/public_directory.asp and give us a call.

Software AG TECHcommunity

You can find documentation and other technical information on the Software AG TECHcommunity website at <http://techcommunity.softwareag.com>. You can:

- Access product documentation, if you have TECHcommunity credentials. If you do not, you will need to register and specify "Documentation" as an area of interest.
- Access articles, code samples, demos, and tutorials.
- Use the online discussion forums, moderated by Software AG professionals, to ask questions, discuss best practices, and learn how other customers are using Software AG technology.
- Link to external websites that discuss open standards and web technology.

Data Protection

Software AG products provide functionality with respect to processing of personal data according to the EU General Data Protection Regulation (GDPR). Where applicable, appropriate steps are documented in the respective administration documentation.

2 Getting Started

- Starting the Format Converter 6
- Creating a Format File 7
- Converting a File 11
- Startup Parameters 12

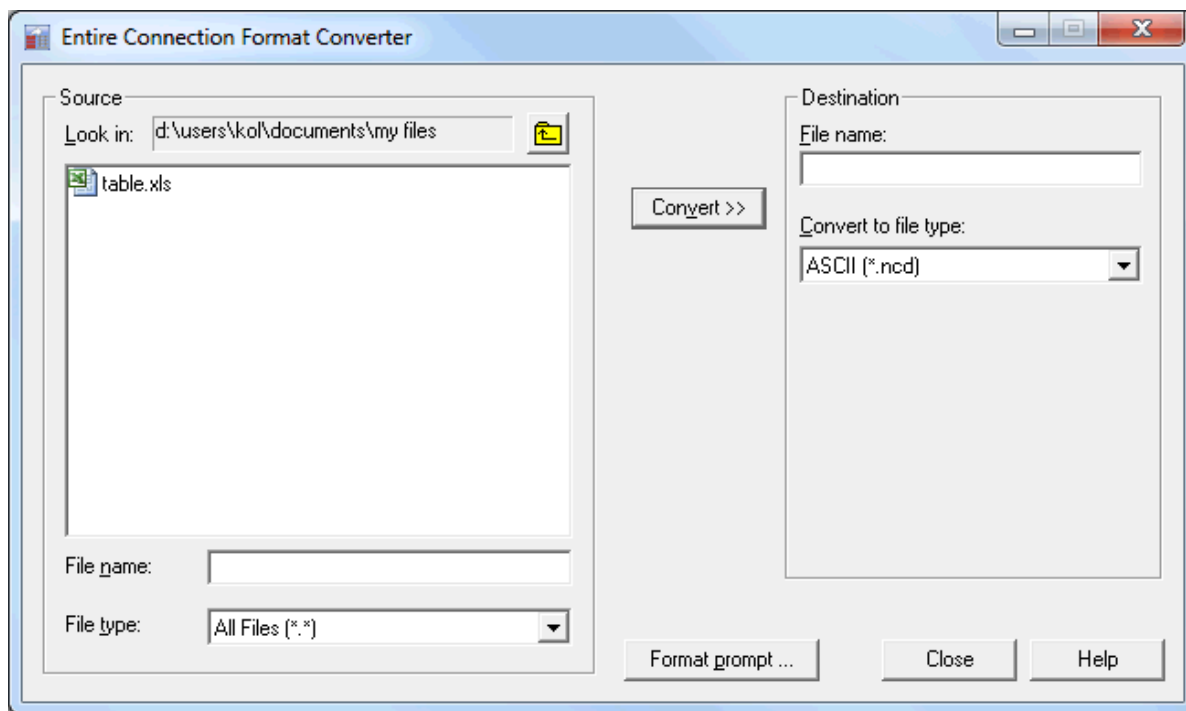
Starting the Format Converter

If you do not specify otherwise during installation, an Entire Connection folder automatically appears in the **All Programs** folder of the Start menu after Entire Connection has been installed. It contains the shortcuts for the Entire Connection components, including the Format Converter.

> **To start the Format Converter**

- From the Start menu, choose **All Programs > Software AG Entire Connection n.n.n > Format Converter**.

The **Entire Connection Format Converter** window appears:



You can now [create a format file](#) or [convert a file](#) as described below.

Creating a Format File

A format file must exist for each file you want to convert. It contains information about the fields in the file to be converted and their lengths (see *Format Files* in the *Data Transfer* section).

The format file must be stored in the same directory as the file to be converted and must have the same name as the file for which it is created. The extension of a format file is always ".ncf".

When downloading data, a format file is automatically created.

A format file does not exist in the following cases:

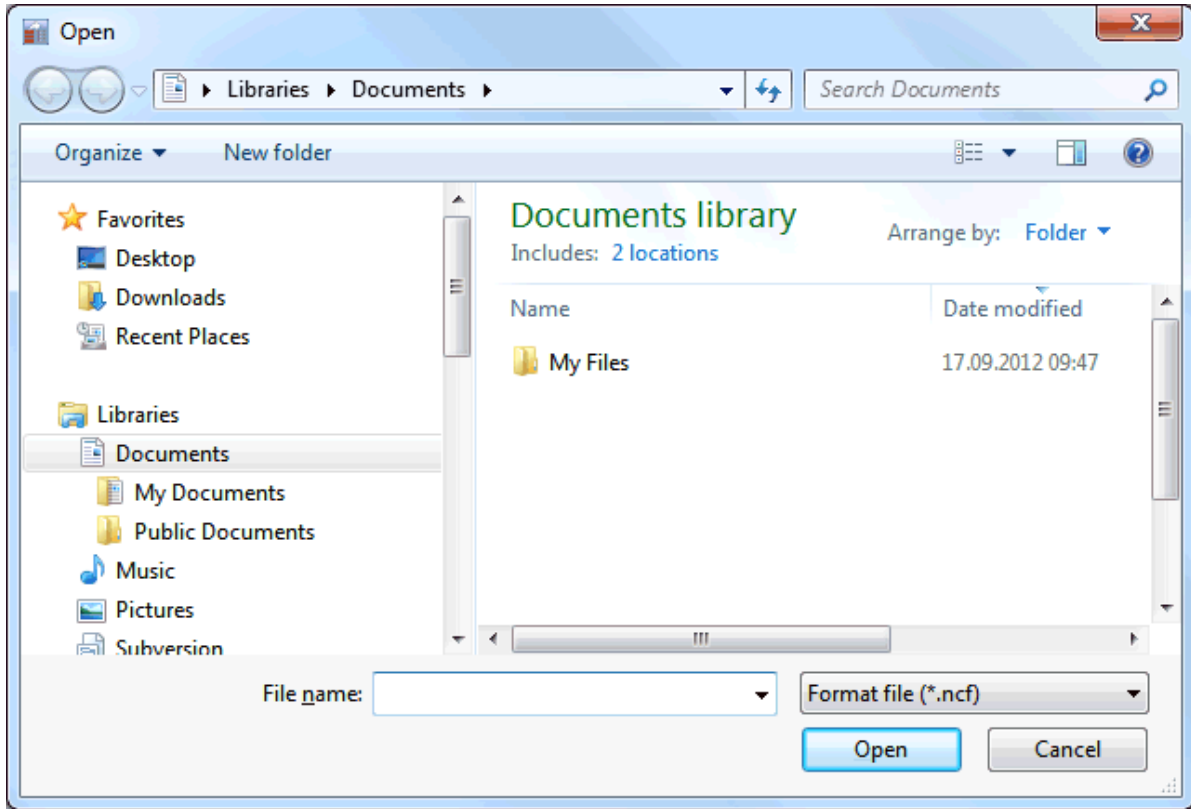
- A format file was not created at download time because the **Create format file** check box in the user properties was not marked.
- The file was not created via download.
- The format file has been deleted.
- Data were downloaded directly to Excel.

You can modify an existing format file or create a new format file. When you create a format file, it is always created in the new format. When you modify an old format file, it remains in its old format. See also *Format Files* in the section *Terminal Emulation*.

> To create or modify a format file

- 1 In the **Entire Connection Format Converter** window, choose the **Format prompt** button.

The **Open** dialog box appears.



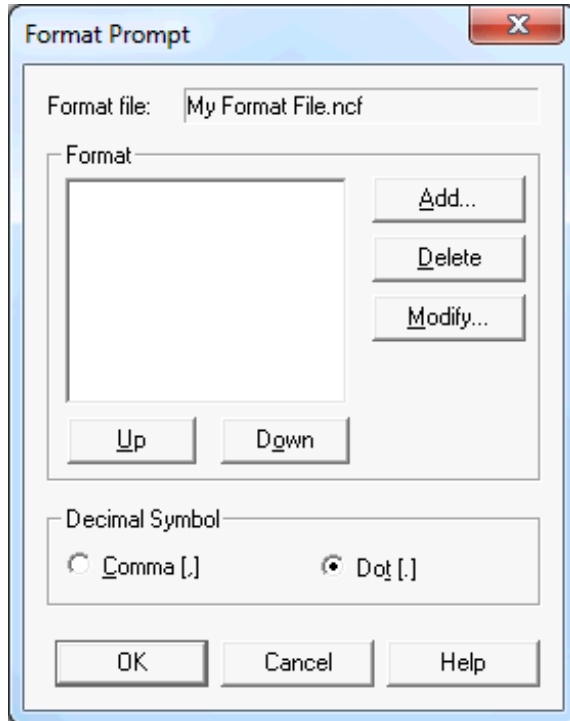
- 2 Select the required directory and enter the name for the new format file in the text box. You need not specify an extension since it is automatically provided.

Or:

Select the format file that you want to modify in the dialog box.

- 3 Choose the **Open** button.

The **Format Prompt** dialog box appears.



- 4 Choose the option button for the decimal symbol that is to be used (comma or dot).

The following command buttons are provided (in addition to the standard buttons):

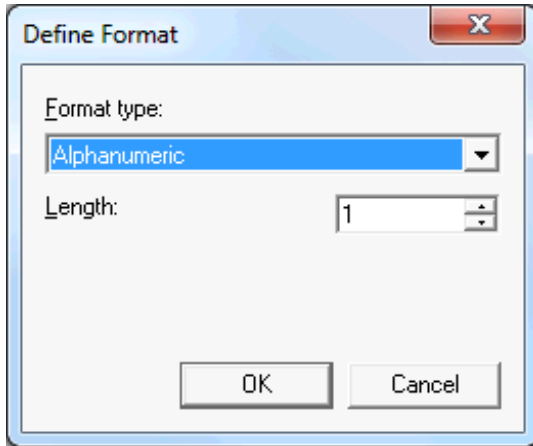
Add	Add a field.
Delete	Delete the selected field.
Modify	Modify the selected field. You can also double-click a field to modify it.
Up	Move the selected field up.
Down	Move the selected field down.

You can now define all required fields as described below. The fields must correspond to the fields in the file for which you create the format file.

➤ To define the fields

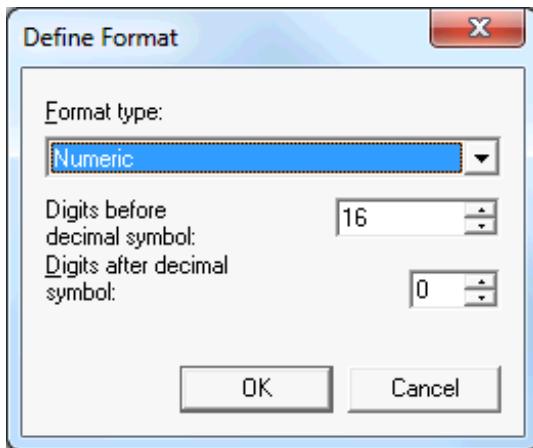
- 1 To add a field, choose the **Add** button.

The **Define Format** dialog box appears:



- 2 From the **Format type** drop-down list box, select the desired format type.
- 3 In the **Length** spin box, specify the desired field length (except for a logical field).

For a numeric field, you have to enter the number of digits before and after the decimal symbol.

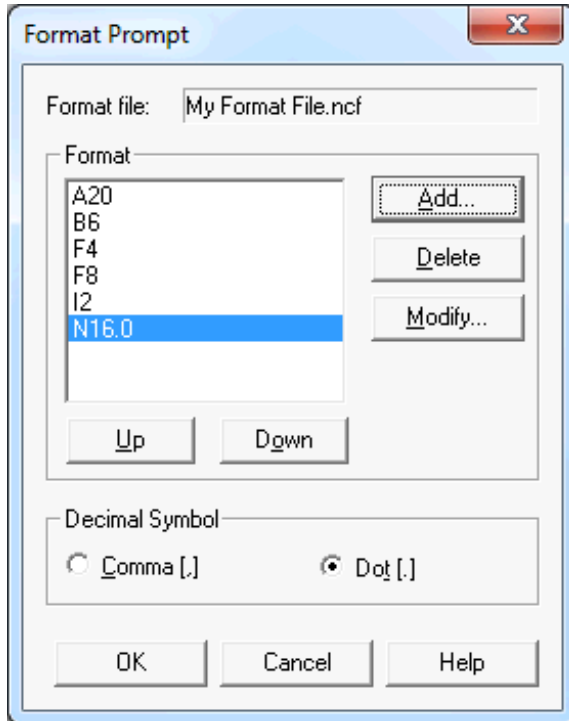


- 4 Choose the **OK** button.

The field definition is now shown in the **Format Prompt** dialog box.

- 5 Repeat the above steps to add all required fields.
- 6 Optionally: to delete, modify or move the selected field, choose the corresponding command button.

The **Format Prompt** dialog box may now look as follows:



- 7 Choose the **OK** button to save the format file.

Converting a File

When a format file exists, you can convert a file as described below.

➤ To convert a file

- 1 On the left side of the **Entire Connection Format Converter** window, select the file to be converted.

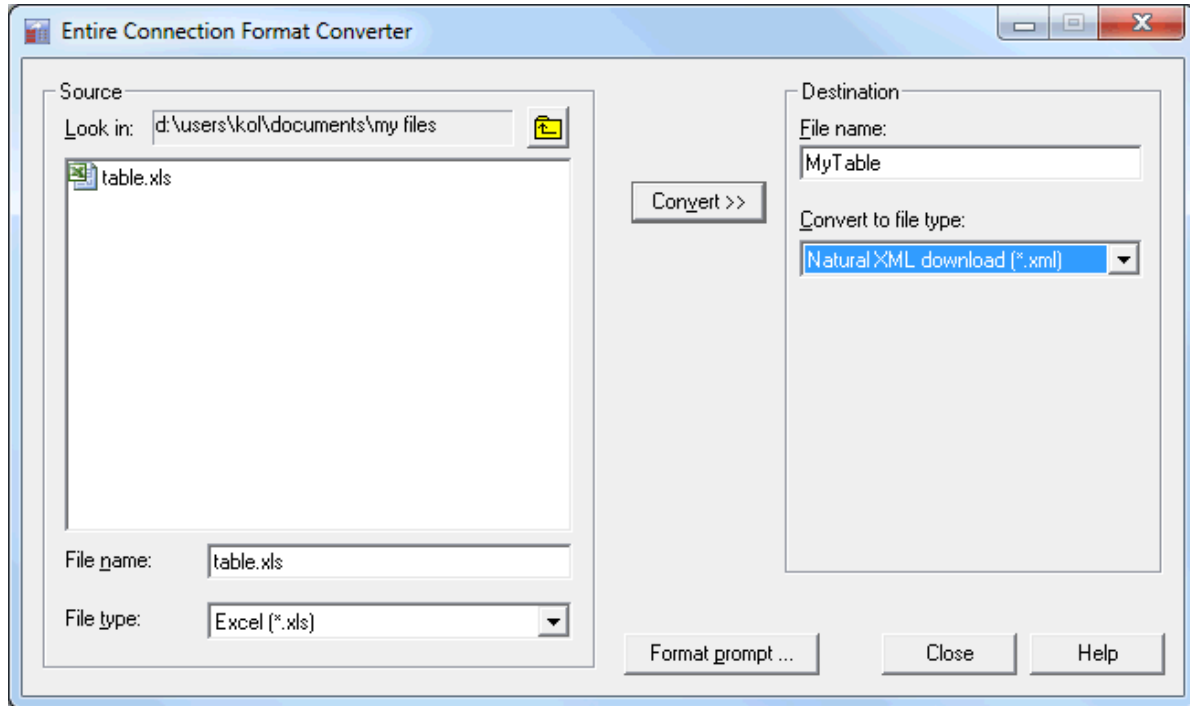
Using the **File type** drop-down list box, you can specify that only files with a specific extension are shown (for example, you can limit the display to Excel files with the extension "xls").

- 2 In the **Destination** group box, enter the name for the target file in the text box.

You need not specify an extension. It is automatically provided depending on the file type you select from the **Convert to file type** drop-down list box.

If you do not specify a path with the name, the target file is created in the current directory.

- 3 From the **Convert to file type** drop-down list box, select the desired format.



- 4 Choose the **Convert** button.

If a file with the name you have just specified exists, a dialog box appears. If you want to overwrite the existing file, choose the **Yes** button.

A message indicating that conversion is in progress is shown. The target file is created in the specified directory.

If a format file does not exist, an error message appears. In this case, you must first create a format file and then repeat conversion.

- 5 To quit the Format Converter, choose the **Close** button.

Startup Parameters

The Format Converter is started by invoking *Pccconvert.exe*.

If you create a shortcut for *Pccconvert.exe*, you can modify its properties in order to define the language with which the Format Converter is to be started.



Note: This information applies only to shortcuts on your desktop (it does not apply to the shortcut in the **Start** menu or a copy of it).

The syntax for invoking the Format Converter with an English user interface is the following:

```
[drive:\path\]Pccconvert.exe /US
```

The syntax for invoking the Format Converter with a German user interface is the following:

```
[drive:\path\]Pccconvert.exe /GR
```

When a language is not defined, English is used by default.

3 File and Field Formats

- Supported File Formats 16
- Unsupported File Formats 16
- Overview of Field Formats in a Format File 17

Supported File Formats

You can convert data to and from the following formats:

Format	Extension
ASCII	*.ncd or any other extension not included in this table (for example, *.txt).
Basic	*.prn
dBase III	*.dbf. Labels are not supported.
Data Interchange Format	*.dif
HTML	*.htm or *.html. This is a specific HTML format that can also be opened with Excel.
Encryption	*.enc
Excel	*.xls (see <i>Prerequisites</i> in the <i>Installation</i> section for further information). Files that have been created with Excel 2007 or above (extension *.xlsx) cannot be converted.
Lotus without labels	*.wks or *.wk1
Lotus with labels	*.wkl
XML	*.xml



Note: Although Entire Connection supports binary files, you cannot convert them.

Unsupported File Formats

You cannot convert the following:

- Binary files
- Downloaded reports
- Downloaded variable data records
- Macro fields
- Metadata
- External file link fields

You cannot convert a file to the same format.

Overview of Field Formats in a Format File

The following field formats are available:

Format	Description
An	Alphanumeric format where n is a digit which is equal to or greater than 1. The maximum value which can be specified depends on your Natural version. See the Natural documentation for further information.
Bn	Binary format where n is a digit which is equal to or greater than 1. The maximum value which can be specified depends on your Natural version. See the Natural documentation for further information.
F4	Floating point format with 4 bytes.
F8	Floating point format with 8 bytes.
In	Integer format where n is 1, 2 or 4.
L1	Logical format.
$Nn.x$	Numeric decimal format where n is a digit between 1 and 29 and x is a digit between 0 and 7. The sum of n and x cannot be greater than 29. (1 to 27 for Natural versions up to but not including 2.2.)

Packed data from the mainframe is represented as numeric data on the PC.

