

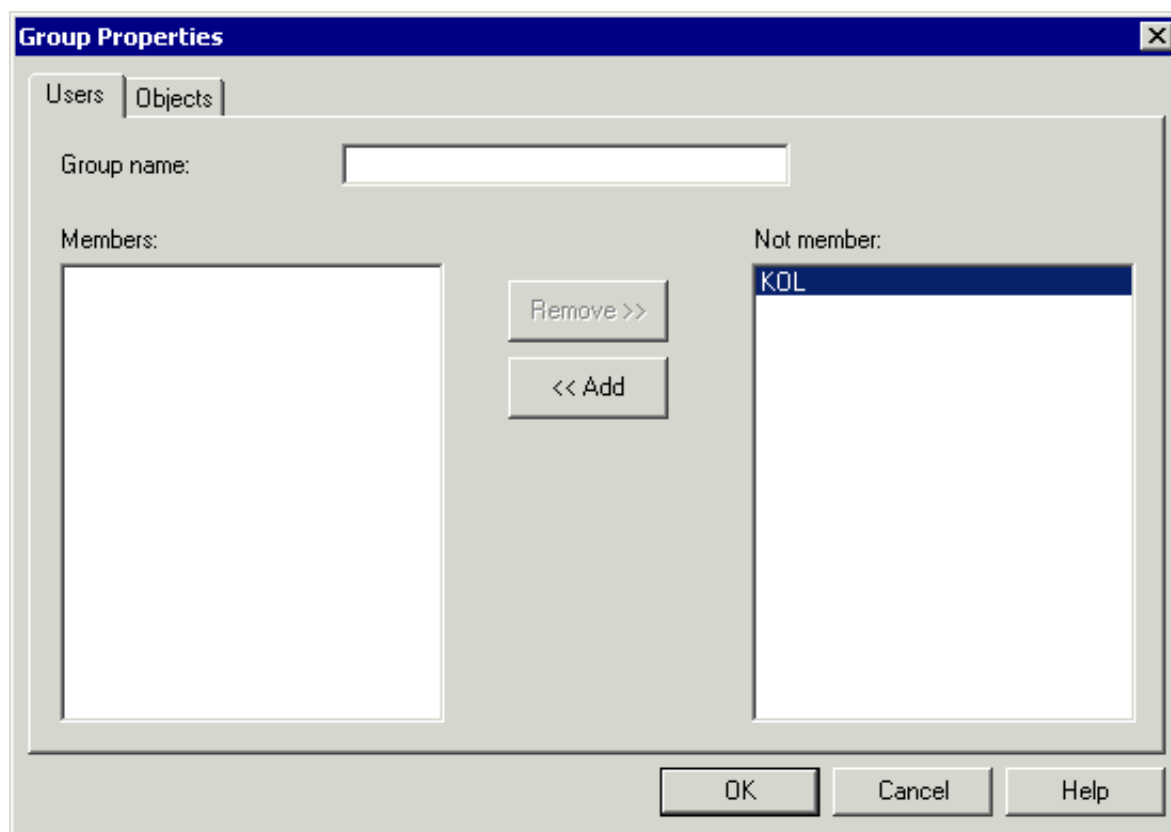
User Groups

The **Group Properties** dialog box provides property pages for the following:

- Assigning Users to Groups
- Granting Group Access to Objects

This dialog box is only available to the administrator.

Assigning Users to Groups



When you create a new user group, specify a name in the **Group name** text box. The name can be up to 32 characters long and may contain blanks. When you modify a user group, this text box cannot be modified.

The **Members** list box shows a list of all members of this group. The **Not member** list box shows a list of all other defined Entire Connection users.

▶ To define a user as a member of a group

- Double-click the user in the **Not member** list box.

Or:

Select the user in the **Not member** list box and choose the **Add** button.

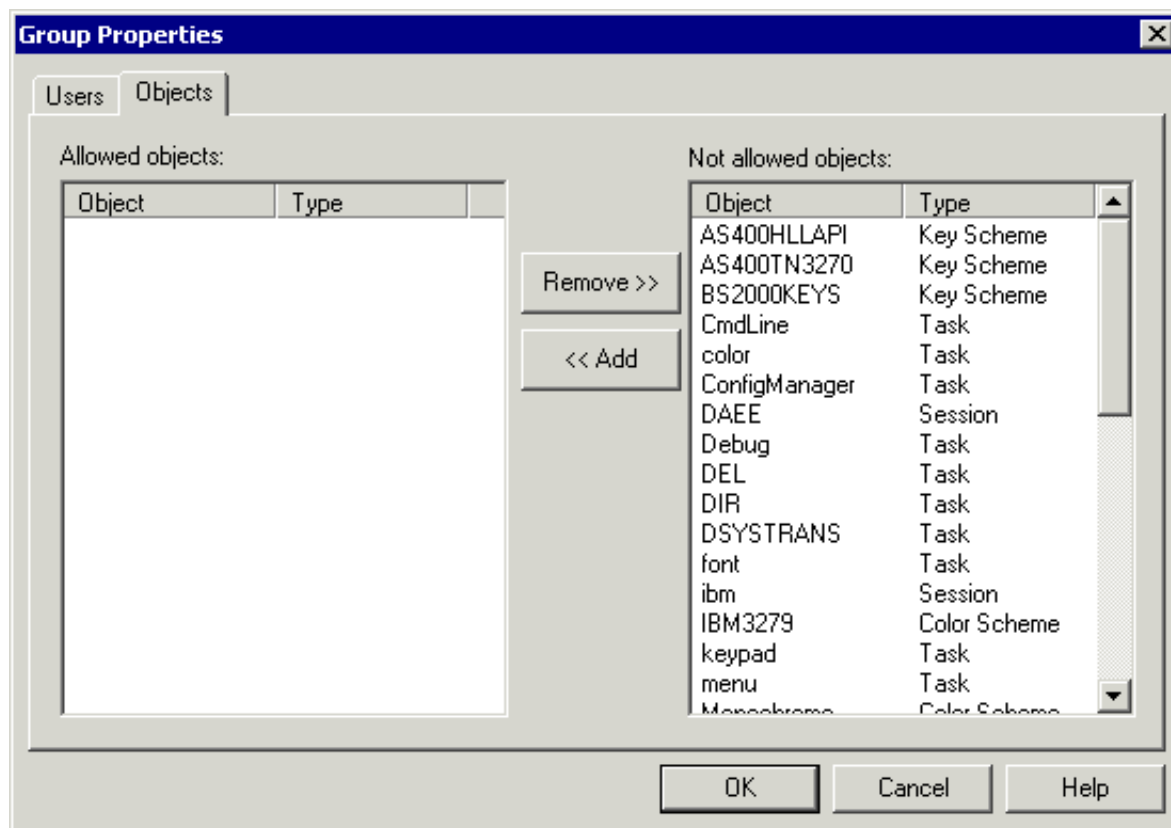
▶ To remove a member from a group

- Double-click the user in the **Members** list box.

Or:

Select the user in the **Members** list box and choose the **Remove** button.

Granting Group Access to Objects



The **Allowed objects** list box shows a list of all objects which the group is allowed to access. The **Not allowed objects** list box shows a list of defined objects.

The allowed objects can be of the following object types:

- Menu
- Task
- Session
- Color scheme

- Key scheme

▶ **To allow an object for a group**

- Select the object(s) in the **Not allowed objects** list box and choose the **Add** button.

▶ **To disallow an object for a group**

- Select the object(s) in the **Allowed objects** list box and choose the **Remove** button.