

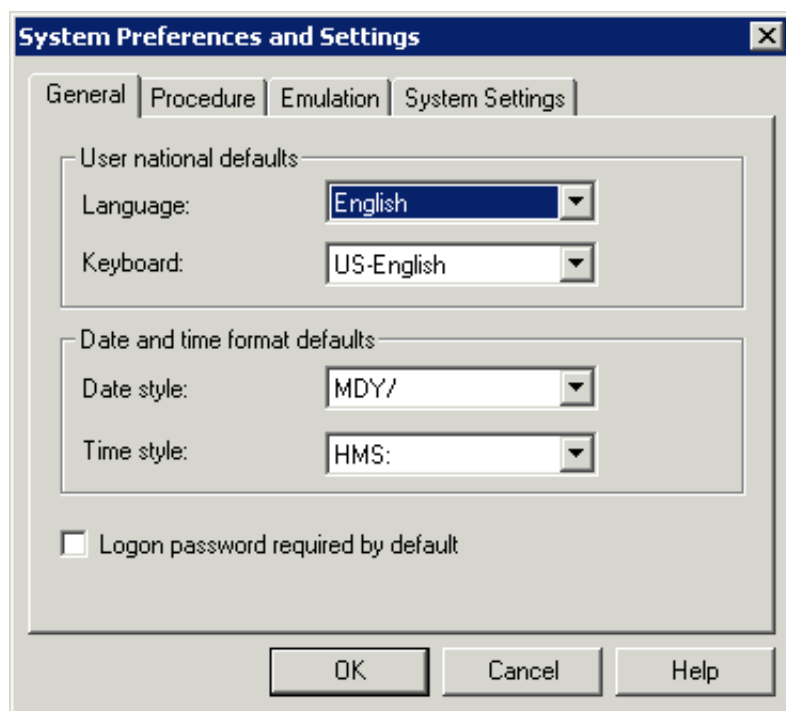
System Preferences and Settings

The **System Preferences and Settings** dialog box provides the following property pages:

- General
- Procedure
- Emulation
- System Settings

This dialog box is only available to the administrator.

General



Language

Select the default language in which the user interface is to be displayed. The drop-down list box contains all languages that are available at your installation. This default is used in the user properties.

Keyboard

Select the default keyboard table. The drop-down list box contains all national keyboards that are available at your installation. This default is used in the user properties.

Date style

Select a default date format to be used throughout Entire Connection. This default is used in the user properties.

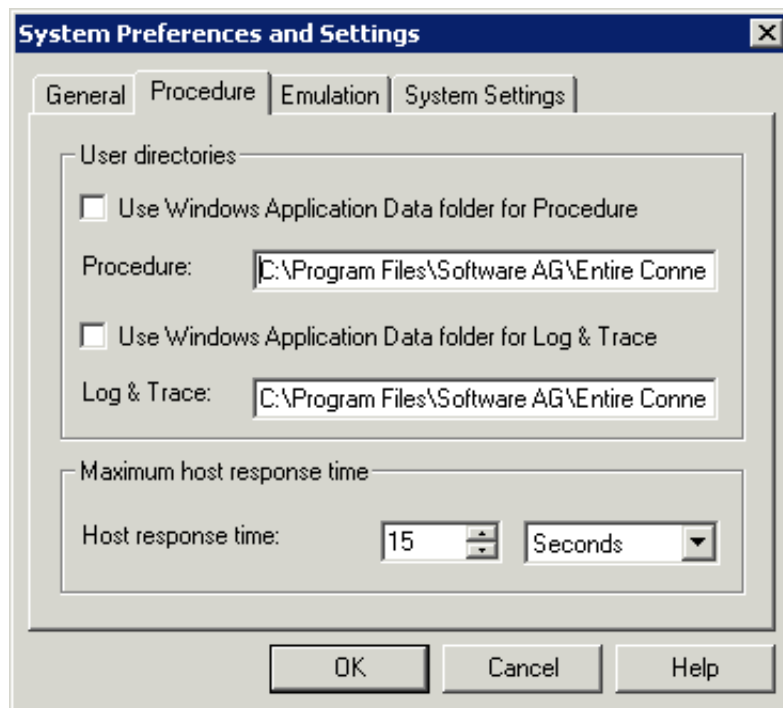
Time style

Select a default time format to be used throughout Entire Connection. This default is used in the user properties. The delimiter character A in HMSA means that the time is shown in the AM/PM format (e.g. 01:30 PM).

Logon password required by default

If this check box is marked, the password must be supplied at logon. This default is used in the user properties.

Procedure



Notes:

1. The defaults for the directories are set at installation time. The corresponding parameters set defaults that are used in the user properties
2. When no fixed paths are defined (that is, when the *Windows Application Data* folder is used), you can easily transport the share file to another machine.

Use Windows Application Data folder for Procedure

When this check box is selected, Entire Connection locates the procedure files in the *Application Data* folder of Windows if they cannot be found in the current directory.

Procedure

Only available when **Use Windows Application Data folder for Procedure** is not selected. You can specify the directory where Entire Connection locates the procedure files if they cannot be found in the current directory. Any drive and path are valid.

Use Windows Application Data folder for Log & Trace

When this check box is selected, Entire Connection writes log and trace files to the *Application Data* folder of Windows.

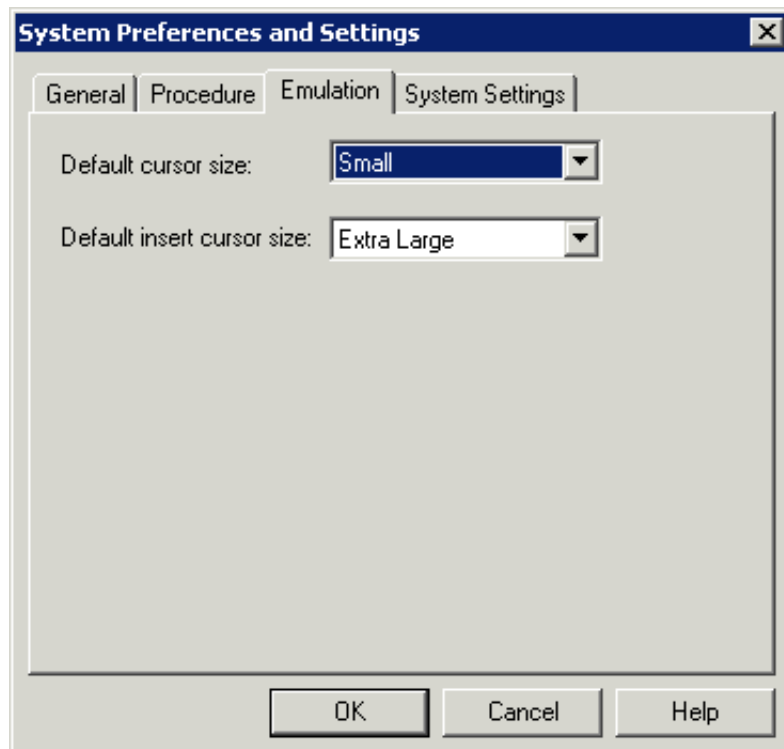
Log & Trace

Only available when **Use Windows Application Data folder for Log & Trace** is not selected. You can specify the directory to which Entire Connection writes log and trace files.

Host response time

This parameter specifies the length of time Entire Connection will wait for a host response before canceling the processing of a procedure file. You can either specify seconds or minutes. Select the desired unit from the corresponding drop-down list box. This default is used in the session properties.

Emulation



Default cursor size

Select the default cursor size from this drop-down list box. This default is used in the user properties. This parameter applies only to Entire Connection and does not affect other Windows applications.

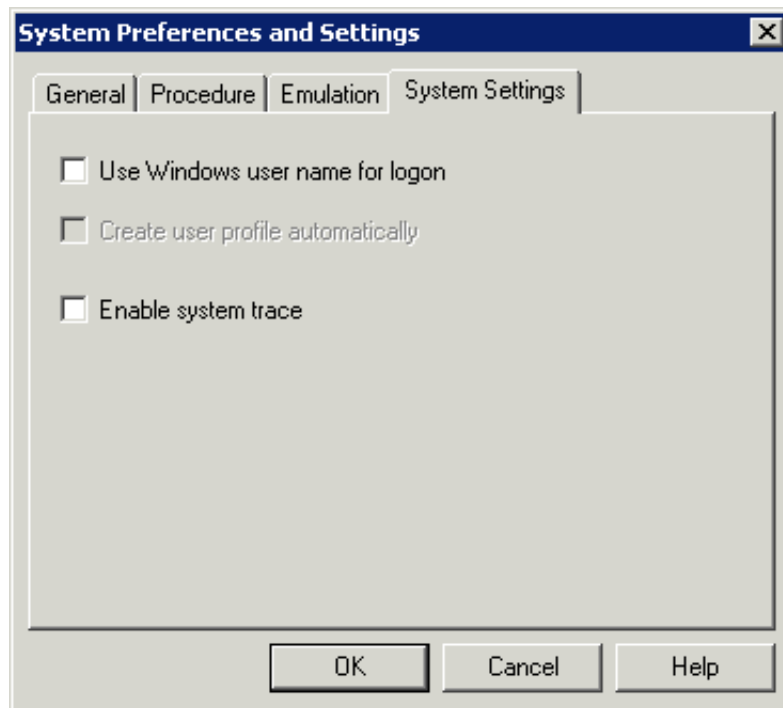
This specification has no effect on the cursor size if the INS key is pressed.

Default insert cursor size

Select the default size of the insert cursor from this drop-down list box. This default is used in the user properties. This parameter applies only to Entire Connection and does not affect other Windows applications.

This specification only has effect on the cursor size when the INS key is pressed. If the INS key is not pressed, the value specified for the **Default cursor size** option is used to display the cursor.

System Settings



Use Windows user name for logon

When this check box is selected, the Windows user name is used to log on to Entire Connection. A logon dialog box does not appear in this case. However, if the terminal application is started using user ID and/or password as startup parameters, this option is ignored.

When this check box is not selected, Entire Connection's user information is required (either in the **Entire Connection Logon** dialog box or as a startup parameter).

Create user profile automatically

This check box is only available when the **Use Windows user name for logon** check box is selected.

When this check box is selected, a dialog box appears if a Windows user name is used to log on to Entire Connection for which a user profile does not yet exist. This dialog box asks whether you want to create a user profile for the current user name.

Enable system trace

This parameter is intended for problem analysis. It should be used only under supervision of your technical support.