

Host Printer Sessions

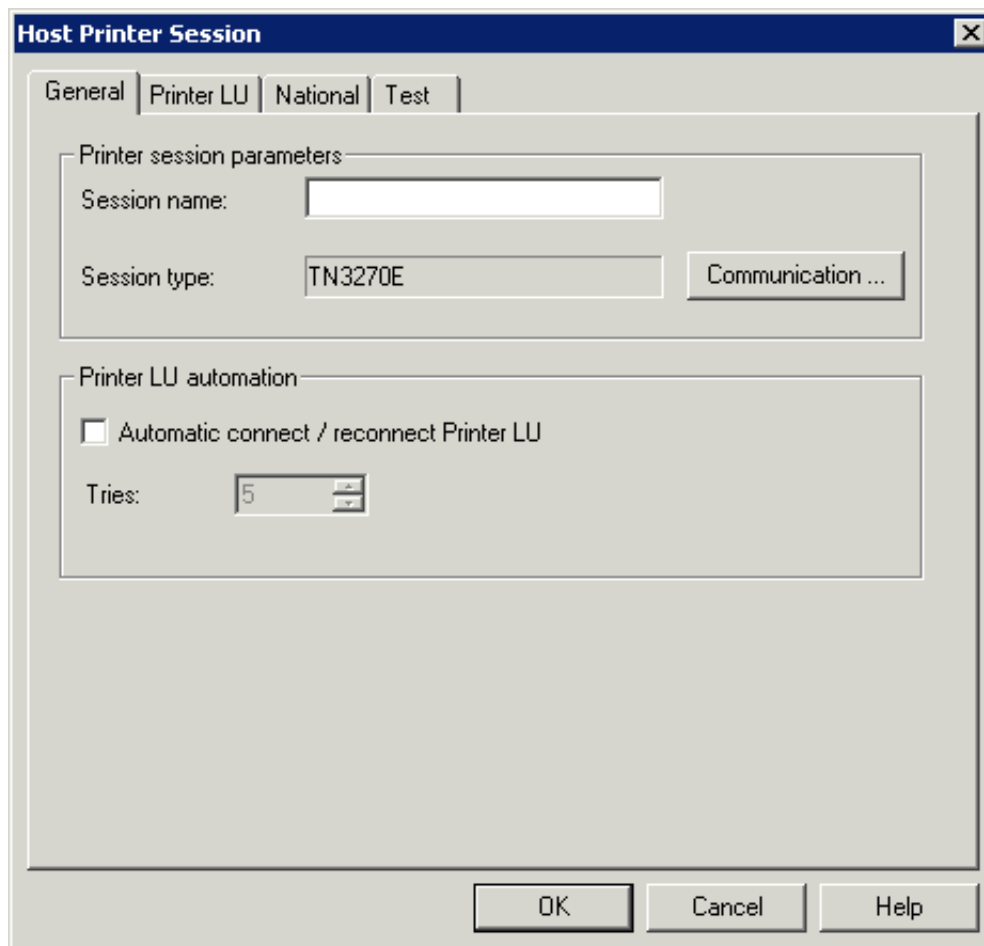
The **Host Printer Session** dialog box contains all parameters necessary to handle data which Entire Connection receives from a printer LU. It provides the following property pages:

- General
- Printer LU
- National
- Test

The **Host Printer Session** dialog box is only available to the administrator.

For further information, see the description of the Host Printer Manager.

General



The screenshot shows the 'Host Printer Session' dialog box with the 'General' tab selected. The dialog has a title bar with a close button (X). Below the title bar are four tabs: 'General', 'Printer LU', 'National', and 'Test'. The 'General' tab is active and contains two main sections:

- Printer session parameters:** This section includes a text box for 'Session name' (which is empty), a text box for 'Session type' containing 'TN3270E', and a 'Communication ...' button.
- Printer LU automation:** This section includes a checkbox labeled 'Automatic connect / reconnect Printer LU' which is currently unchecked, and a 'Tries:' label followed by a spin box containing the number '5'.

At the bottom of the dialog are three buttons: 'OK', 'Cancel', and 'Help'.

Session name

The name can be up to 32 characters long and may contain blanks. It is only possible to specify a session name, when you are currently adding a new session to the share file. Later, this text box does not allow modifications. It is not possible to define identical names for printer sessions and display sessions; an error message will appear in this case.

Session type

Displays the defined session type (TN3270E). To display the **Communication** dialog box, choose the **Communication** button.

Automatic connect / reconnect printer LU

Select this check box, if the connection to the printer LU on the mainframe is to be established automatically (during startup of the host printer service) for the configured printer session.

Tries

If the connection to the host cannot be established, the number in this spin box determines how often Entire Connection tries to reconnect to the printer LU (in intervals of 5 minutes).

Printer LU

The screenshot shows the 'Host Printer Session' dialog box with the 'Printer LU' tab selected. The dialog has four tabs: 'General', 'Printer LU', 'National', and 'Test'. The 'Printer LU' tab contains the following settings:

- Print destination:** Radio buttons for 'Printer' (selected), 'File', and 'Program'.
- Printer:** A text box for 'Printer Name' containing '\\DAEPRI01\DAEPRP17' and a 'Select ...' button. A checked checkbox labeled 'Bypass Windows printer driver' is below it.
- Printer options:** A group box containing five checkboxes: 'Print NULL as space', 'Ignore leading form feed', 'End print job on form feed', 'DOS code page', and 'Force trailing form feed'. All are currently unchecked.
- Command sequences:** A group box containing a 'Sequence type' dropdown menu set to 'Printer pre-sequence' and an empty 'String value' text box.
- Escape character:** An empty text box.

At the bottom of the dialog are 'OK', 'Cancel', and 'Help' buttons.

Print destination

Select one of the following option buttons:

- **Printer**

Your print data are temporarily buffered in the log/trace directory. The name of the resulting file is *Prnt<nn>.pcc* where *nn* is a number starting with 00 and being incremented by one. For successful processing at least 10 MB of free disk space are required.

When the host print process is completed, the data from the temporary file are printed on the specified printer (see below). After successful printing, the temporary file is automatically deleted.

- **File**

Your print data are routed to a print queue which is a directory on a disk (see below). The name of the resulting file is *Prnt<nn>.ecl* where *nn* is a number starting with 00 and being incremented by one.

After this, Entire Connection has no more control over the print job and the files in the queue. A print application (for example, Software AG's PrintStation) checks whether there are files in this queue and prints them. It is the print application's responsibility to delete the files after they have been printed.

- **Program**

Your print data are buffered in the log/trace directory. The name of the resulting file is *Prnt<nn>.pcc* where *nn* is a number starting with 00 and being incremented by one.

When the host print process is completed, the user program (see below) is automatically started. The name of the print file as well as drive and directory in which it is stored are passed to the user program as parameters. It is the user program's responsibility to delete the file after it has been processed. This allows you, for example, to print via FTP.

Printer / Directory / Program

The label of this group box changes according to the selected print destination. It shows one of the following text boxes:

- **Printer Name**

When you choose the option button **Printer**, you must specify the printer name. You can also choose the **Select** button to select the printer from a list.

When the **Bypass Windows printer driver** check box is selected, the Windows printer driver is not used and your print data are sent directly to the printer. When this check box is not selected, the driver of the selected printer is used.

- **Directory Name**

When you choose the option button **File**, you must specify the name of the print queue which is a directory on a disk.

- **Program Name**

When you choose the option button **Program**, you must specify the path and name of the user program. You can also choose the **Browse** button to locate the user program.

Print NULL as space

When this check box is marked, binary NULL is mapped to blanks in print data.

Ignore leading form feed

When this check box is marked, Entire Connection ignores a form feed at the start of the print job.

DOS code page

When this check box is marked, print data is translated from the Windows ANSI character set to the DOS (OEM) character set. This is important, for example, for German umlauts when a printer font is used which uses the DOS character set.

Force trailing form feed

When this check box is marked and the print file does not contain a form feed at its end, Entire Connection forces a form feed at the end of the print job.

End print job on form feed

Some host applications do not terminate the print session (i.e. they do not send an unbind). In this case, the data received from the host are not sent to the printer since Entire Connections keeps waiting for the end of the print session. If this check box is marked, the print data received from the host are sent to the printer (i.e. the print job is submitted) whenever a form feed is found at the end of a received data block.

Command sequences

Select one of the following options from the **Sequence type** drop-down list box and specify the corresponding value in the **String value** text box.

- **Printer pre-sequence**

This only applies to the to the print destination **Printer**.

When you specify a printer pre-sequence in the **String value** text box, you can define specific printer settings. The sequence is sent to the printer before a print job starts. It may be up to 259 characters long.

- **Printer post-sequence**

This only applies to the to the print destination **Printer**.

When you specify a printer post-sequence in the **String value** text box, you can define specific printer settings. The sequence is sent to the printer after the print job has completed. It may be up to 259 characters long.

- **Transparent start / stop**

You can specify the start and stop sequences that have been defined on the host in order to indicate the beginning and the end of a transparent block. Each sequence may be up to 47 characters long.

You can either define a start sequence or both start and stop sequence. When you receive data from the host, the following applies:

- **Only a start sequence has been defined**

The pair of characters that follows the specified start sequence is interpreted as the hexadecimal representation of an ASCII character.

For example: "(!" was defined as the start sequence and "(!1B" is received from the host. In this case, the hexadecimal byte 1B (ESC) is sent to the printer.

- **Both start and stop sequence have been defined**

Each pair of characters between the start and stop sequence is interpreted as the hexadecimal representation of an ASCII character.

For example: "(!" was defined as the start sequence and ")" as the stop sequence. "(!1B2C3A)" is received from the host. In this case, the hexadecimal bytes 1B (ESC), 2C and 3A are sent to the printer.

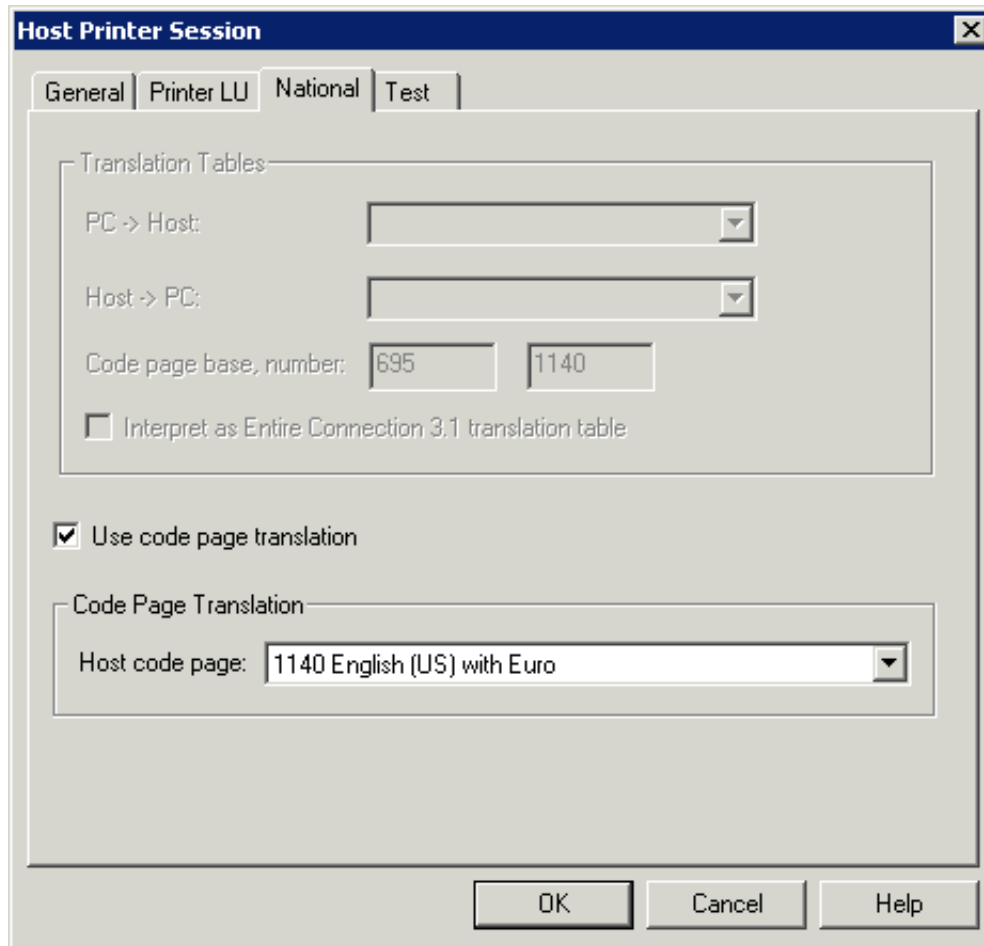
Escape character

This text box only appears when the print destination **Printer** is selected.

Since the hexadecimal printer escape character 1B cannot be transmitted by IBM hardware, you must specify a printable character which maps the escape character. Entire Connection scans the whole data buffer for the character you specify in this text box. When the character is found, it is translated to the hexadecimal character 1B (ESC).

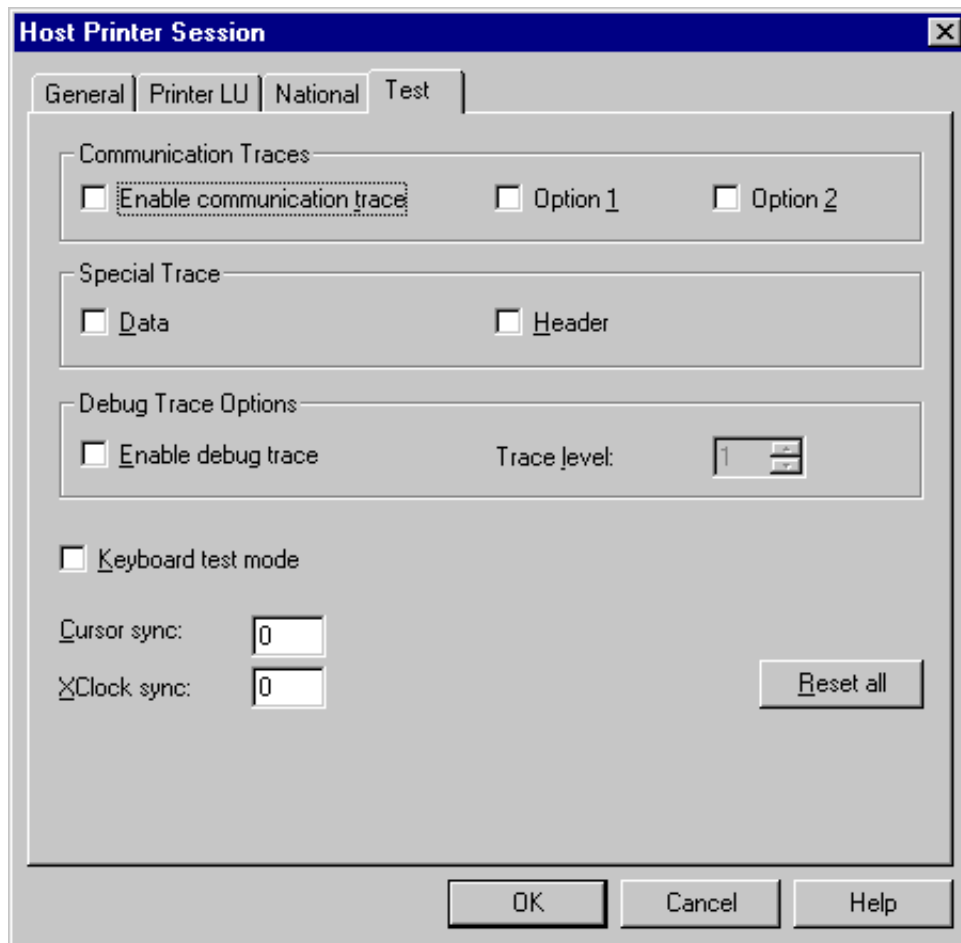
When you specify a start sequence *and* a printer escape character, Entire Connection first checks for the start sequence and then for the defined escape character.

National



See the description of the **National** property page of the session properties.

Test



See the description of the **Test** property page of the session properties.