

Getting Started

This chapter covers the following topics:

- Starting the Format Converter
 - Creating a Format File
 - Converting a File
 - Startup Parameters
-

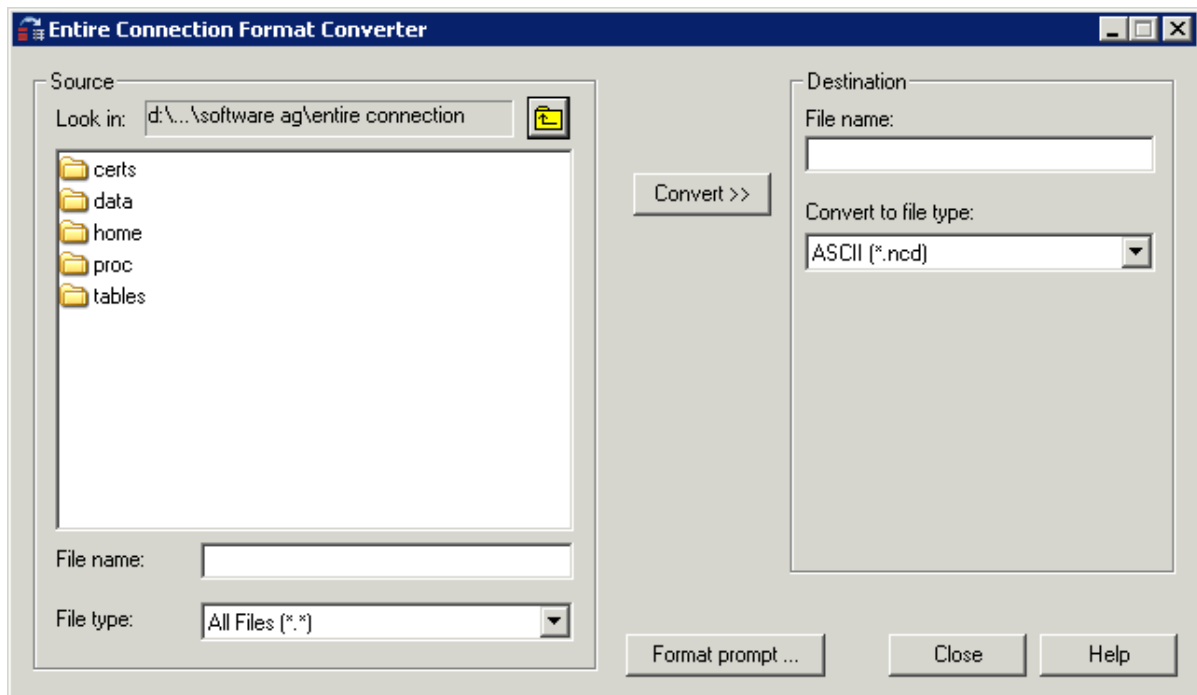
Starting the Format Converter

If you do not specify otherwise during installation, an Entire Connection folder automatically appears in the **Programs** folder of the **Start** menu after Entire Connection has been installed. It contains the shortcuts for the Entire Connection components, including the Format Converter.

▶ To start the Format Converter

- From the **Start** menu, choose **Programs > Software AG Entire Connection *n.n.n* > Format Converter**.

The **Entire Connection Format Converter** window appears:



You can now create a format file or convert a file as described below.

Creating a Format File

A format file must exist for each file you want to convert. It contains information about the fields in the file to be converted and their lengths (see *Format Files* in the *Data Transfer* section).

The format file must be stored in the same directory as the file to be converted and must have the same name as the file for which it is created. The extension of a format file is always ".ncf".

When downloading data, a format file is automatically created.

A format file does not exist in the following cases:

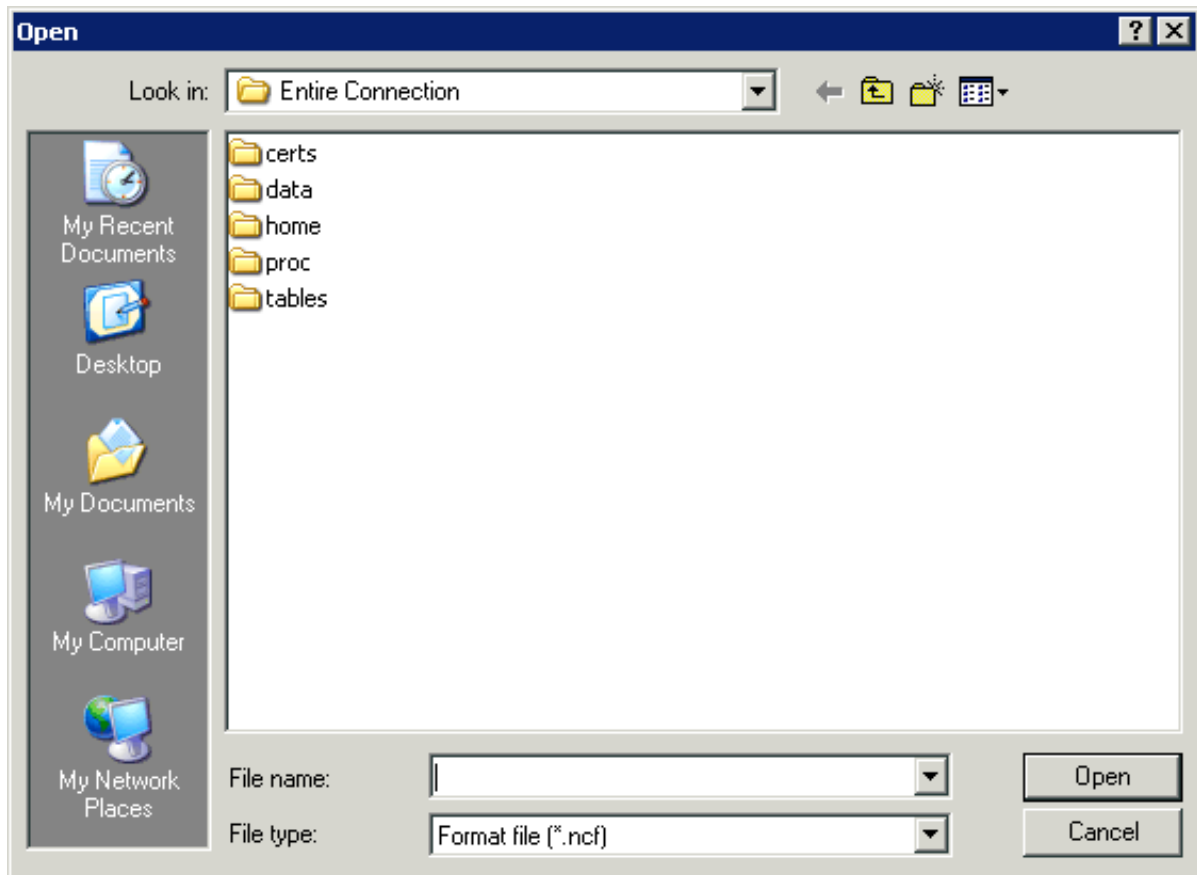
- A format file was not created at download time because the **Create format file** check box in the user properties was not marked.
- The file was not created via download.
- The format file has been deleted.
- Data were downloaded directly to Excel.

You can modify an existing format file or create a new format file. When you create a format file, it is always created in the new format. When you modify an old format file, it remains in its old format. See also *Format Files* in the section *Terminal Emulation*.

To create or modify a format file

1. In the **Entire Connection Format Converter** window, choose the **Format prompt** button.

The **Open** dialog box appears.



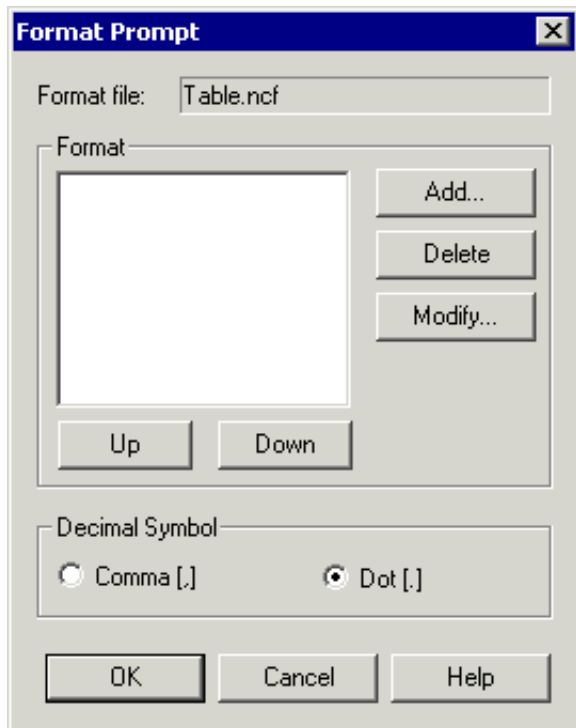
2. Select the required directory and enter the name for the new format file in the text box. You need not specify an extension since it is automatically provided.

Or:

Select the format file that you want to modify in the dialog box.

3. Choose the **Open** button.

The **Format Prompt** dialog box appears.



4. Choose the option button for the decimal symbol that is to be used (comma or dot).

The following command buttons are provided (in addition to the standard buttons):

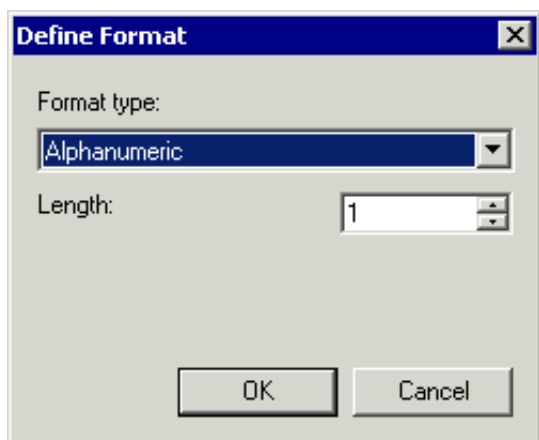
Add	Add a field.
Delete	Delete the selected field.
Modify	Modify the selected field. You can also double-click a field to modify it.
Up	Move the selected field up.
Down	Move the selected field down.

You can now define all required fields as described below. The fields must correspond to the fields in the file for which you create the format file.

▶ To define the fields

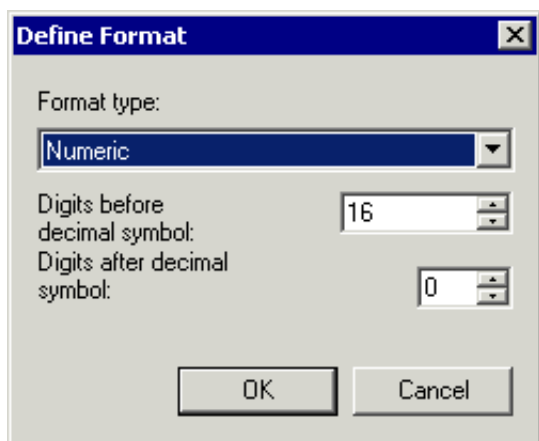
1. To add a field, choose the **Add** button.

The **Define Format** dialog box appears:



2. From the **Format type** drop-down list box, select the desired format type.
3. In the **Length** spin box, specify the desired field length (except for a logical field).

For a numeric field, you have to enter the number of digits before and after the decimal symbol.

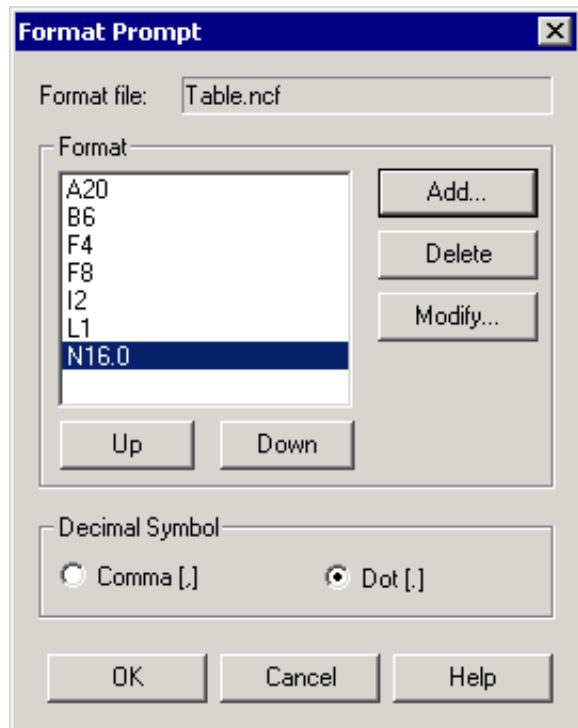


4. Choose the **OK** button.

The field definition is now shown in the **Format Prompt** dialog box.

5. Repeat the above steps to add all required fields.
6. Optionally: to delete, modify or move the selected field, choose the corresponding command button.

The **Format Prompt** dialog box may now look as follows:



7. Choose the **OK** button to save the format file.

Converting a File

When a format file exists, you can convert a file as described below.

▶ To convert a file

1. On the left side of the **Entire Connection Format Converter** window, select the file to be converted.

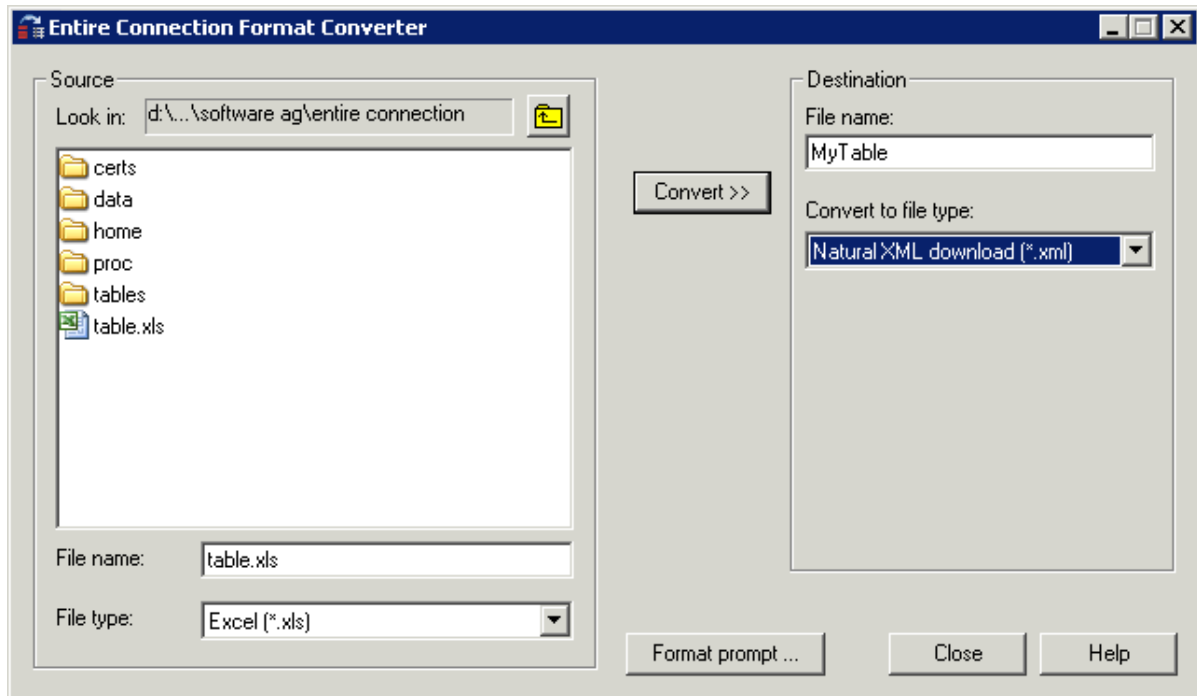
Using the **File type** drop-down list box, you can specify that only files with a specific extension are shown (for example, you can limit the display to Excel files with the extension ".xls").

2. In the **Destination** group box, enter the name for the target file in the text box.

You need not specify an extension. It is automatically provided depending on the file type you select from the **Convert to file type** drop-down list box.

If you do not specify a path with the name, the target file is created in the current directory.

3. From the **Convert to file type** drop-down list box, select the desired format.



4. Choose the **Convert** button.

If a file with the name you have just specified exists, a dialog box appears. If you want to overwrite the existing file, choose the **Yes** button.

A message indicating that conversion is in progress is shown. The target file is created in the specified directory.

If a format file does not exist, an error message appears. In this case, you must first create a format file and then repeat conversion.

5. To quit the Format Converter, choose the **Close** button.

Startup Parameters

The Format Converter is started by invoking *Pccconvert.exe*.

If you create a shortcut for *Pccconvert.exe*, you can modify its properties in order to define the language with which the Format Converter is to be started.

Note:

This information applies only to shortcuts on your desktop (it does not apply to the shortcut in the **Start** menu or a copy of it).

The syntax for invoking the Format Converter with an English user interface is the following:

```
[drive:\path\]Pccconvert.exe /US
```

The syntax for invoking the Format Converter with a German user interface is the following:

```
[drive:\path\]Pccconvert.exe /GR
```

When a language is not defined, English is used by default.