

Getting Started

This chapter tells you how to get started with the Configuration Manager of Entire Connection.

- Starting the Configuration Manager
 - Elements of the Application Window
 - Navigation
 - Using Help
 - The About Dialog
 - Quitting the Configuration Manager
 - Startup Parameters
-

Starting the Configuration Manager

If you do not specify otherwise during installation, an Entire Connection folder automatically appears in the Programs folder of the Start menu after Entire Connection has been installed. It contains the shortcuts for the Entire Connection components, including the Configuration Manager.

To start the Configuration Manager

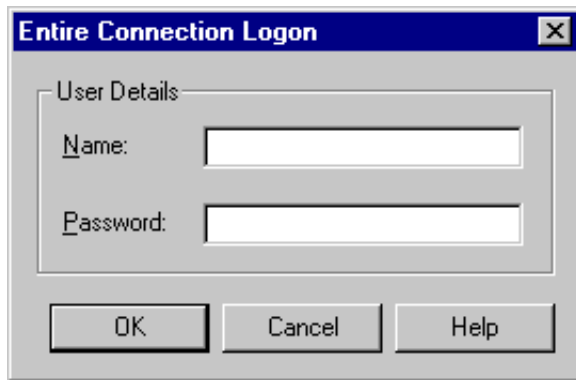
1. From the **Start** menu, choose **Programs > Software AG Entire Connection *n.n.n* > Configuration Manager**.

It is assumed that you logon as an administrator. Therefore, the following default settings are used:

- "SYSTEM" as the default name.
- "PASSWORD" as the default password.

If you are an administrator, you should rename the user SYSTEM, define another password and then create a shortcut on your desktop.

If user information is required, the **Entire Connection Logon** dialog box appears and you must proceed as described below.

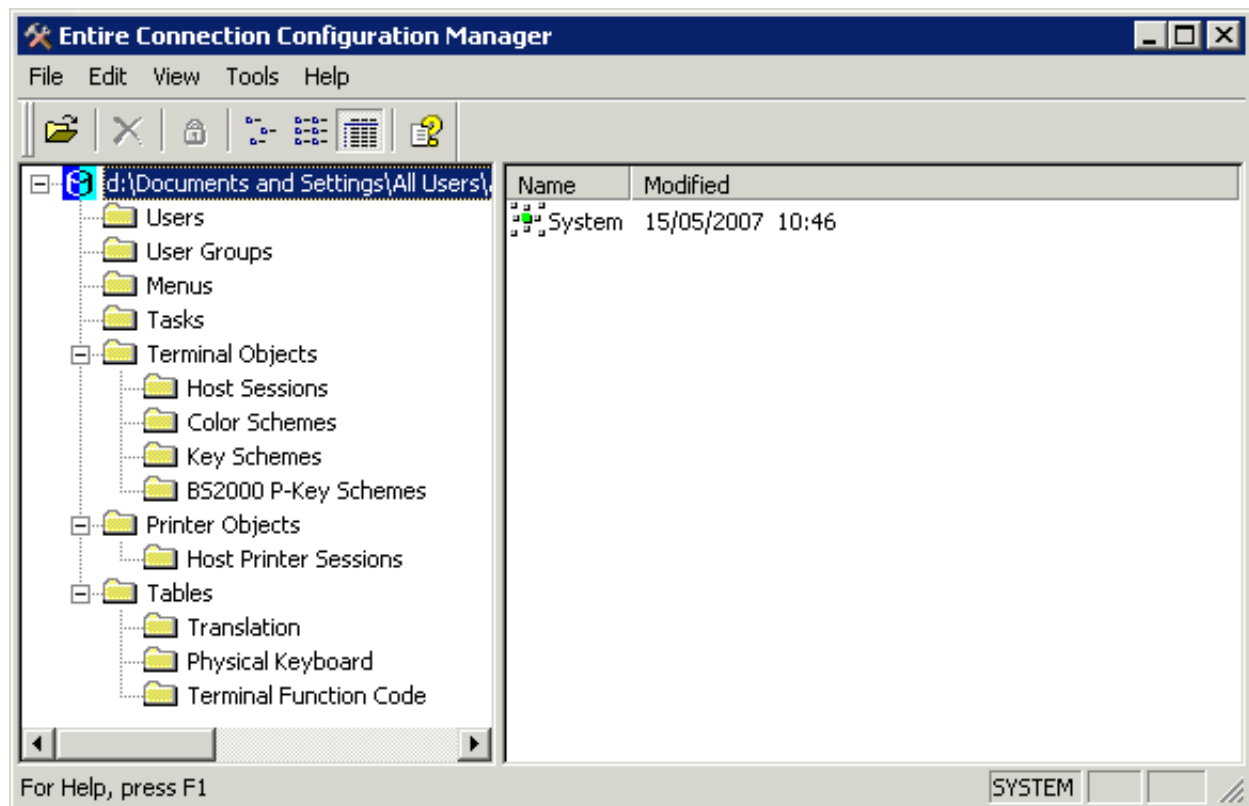


2. Enter your name.
3. Enter your password (if required).
4. Choose the **OK** button.

The Configuration Manager is now started with the rights that are defined for you.

Elements of the Application Window

When you start the Configuration Manager, the share file is automatically loaded.



The name with which you are currently logged on is shown in the status bar.

The application window contains two panes. To modify the size of a pane, move the mouse pointer over the border separating the panes until the pointer changes, showing two arrows pointing into opposite directions. Then drag the border using the mouse until one of the panes has the desired size. When working with the keyboard, press CTRL+ALT+S and then use RIGHT-ARROW or LEFT-ARROW to modify the size.

The following topics are covered below:

- Menu Bar
- Toolbar
- Status Bar
- Share File and Object Types
- Defined Objects

Menu Bar

The following menus are available:

File	Using the commands in this menu you can open another share file or quit the Configuration Manager.
Edit	Using the commands in this menu, you can manage the objects that are shown in the right pane of the application window.
View	Using the commands in this menu, you can show or hide the toolbar or status bar. You can also specify how the objects in the right pane of the application window are to be presented and whether private objects are shown.
Tools	Using the commands in this menu, you can reorganize or upgrade the share file, or merge an older share file with the currently active share file.
Help	<p>When you choose Online Documentation from this menu, you access the Entire Connection documentation.</p> <p>When you choose About from this menu, information about Entire Connection is shown.</p> <p>When you choose Software AG on the Web from this menu, you can check the Software AG web site for the latest information on products or events.</p>

Toolbar

You can execute the most important Configuration Manager functions using the toolbar. The toolbar buttons represent the following menu commands:

	Open Share File (File menu)
	Delete (Edit menu)
	Private Objects (View menu)
	Small Icons (View menu)
	List (View menu)
	Details (View menu)
	Online Documentation (Help menu)

▶ To switch the toolbar display on and off

- From the **View** menu, choose **Toolbar**.

When the toolbar is displayed in the application window, a check mark is shown next to this menu command.

Status Bar

The status bar is used to display system messages and help texts for the currently selected menu command or toolbar button.

▶ To switch the status bar display on and off

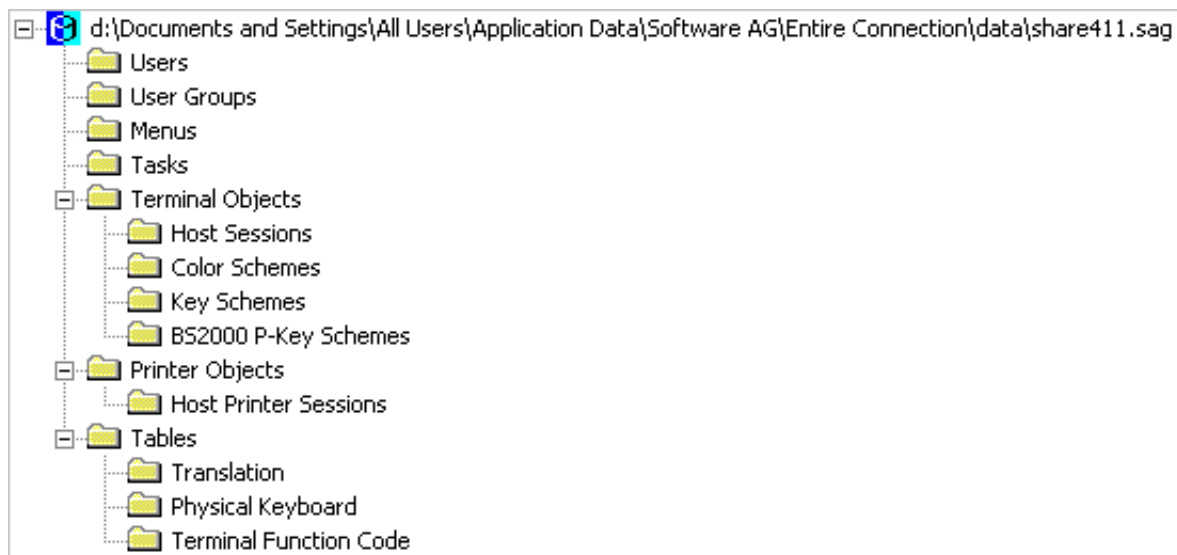
- From the **View** menu, choose **Status Bar**.

When the status bar is displayed in the application window, a check mark is shown next to this menu command.

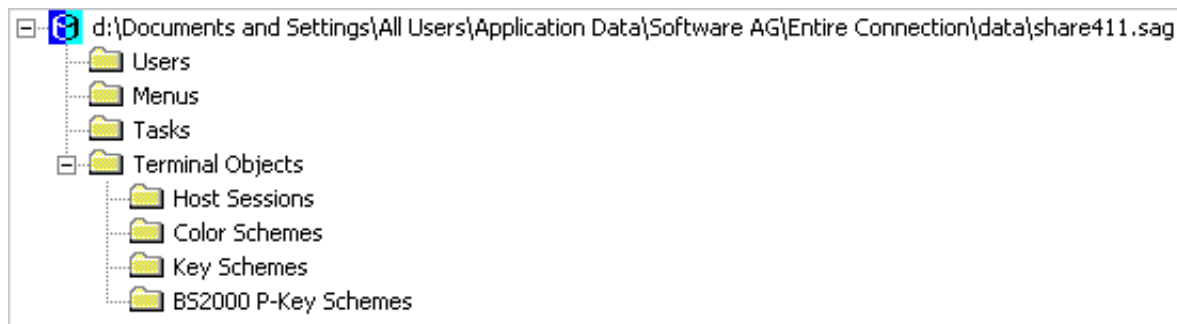
Share File and Object Types

The left pane of the application window shows a tree structure. It contains the path to the active share file and all available object types.

The administrator can see all object types:




The general user can only see the following object types:

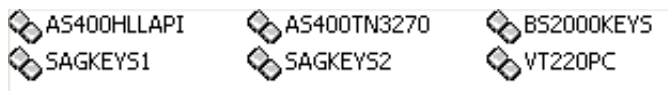



Defined Objects

The right pane of the application window shows the objects that are defined for the currently selected object type.


Using the following commands in the **View** menu, you determine how the objects in the right pane are to be presented. These commands are also available from the toolbar or from the context menu **View** which appears when you click the *right* mouse button in the right pane of the application window.







 The command **Small Icons** presents the objects as follows:



 The command **List** presents the objects as follows:




 The command **Details** (default) presents the objects as follows:

Name	Owner	Modified
 AS400HLLAPI	Public	22/01/2003 15:23
 AS400TN3270	Public	22/01/2003 15:23
 BS2000KEYS	Public	22/01/2003 15:23
 SAGKEYS1	Public	22/01/2003 15:23
 SAGKEYS2	Public	22/01/2003 15:23
 VT220PC	Public	22/01/2003 15:23

The column headings change according to the type of object shown.

You can modify the width of each column. To do so, move the mouse pointer to the line in the heading which separates two columns. The pointer now changes, showing two arrows pointing into opposite directions. Using the mouse, you can now drag the column until it has the desired size.

 The command **Private Objects** is only available to the administrator. It also shows the objects which are privately owned by other users. When the objects are presented in the Details view, the name of the owner is shown.

Using the command **Make Public**, the administrator can change a private object into a public object which is then available to all users. This command only applies to the following object types:

- Menus
- Tasks
- Host Sessions
- Color Schemes
- Key Schemes

Navigation

In the left pane of the application window, you can expand or collapse the tree structure by clicking the plus or minus sign in front of the share file name or folder name. When using the keyboard, select the name and press RIGHT-ARROW or LEFT-ARROW. Alternatively, you can double-click the share file name or a folder name preceded by a plus or minus sign to expand/collapse the tree structure.

▶ To display all object types (when only the share file is shown)

- Double-click the name of the share file.

Or:

Click the plus sign in front of the share file name.

Or:

Select the share file name and press RIGHT-ARROW.

Some object types are contained in folders (indicated by a plus or minus sign in front of the folder). In this case, you must click the plus sign, or double-click the folder name, or select the folder name and then press RIGHT-ARROW to display the object types.

▶ To display all objects defined for a specific object type

- In the left pane of the application window, select the desired object type.

All objects defined for this object type are now shown in the right pane of the application window.

Exception:

To display the system preferences (**System**) in the right pane of the application window, select the name of the share file.

▶ To display/modify the object properties

- In the right pane of the application window, double-click the desired object.

Or:

Select the object and press ENTER.

An object-specific dialog box appears. See the *Overview of Object Properties* for detailed information on these dialog boxes.

It is not possible to display a dialog box for a table.

Using Help

The complete Entire Connection documentation is available as an HTML help file.

▶ To access the documentation

- From the **Help** menu, choose **Online Documentation**.

Or:

Choose the following toolbar button:



▶ To invoke context-sensitive help

- In a dialog box, choose the **Help** button.

Or:

Press F1.

The About Dialog

Information about the Configuration Manager is provided in the About dialog which provides the following tabs:

- **About**
Shows information about Entire Connection (such as version number and copyright).
- **Version**
Shows information about the Entire Connection modules. This is useful if you need to contact your technical support. Using the **Save** button, you can save the displayed information in the file *P-level.log*. This file will then be created in the log/trace directory. Using the **Copy** button, you can copy the displayed information to the Clipboard.
- **Share File**
Shows information about Entire Connection's share file (such as licence number and installation date).

▶ To access the About dialog

- From the **Help** menu, choose **About Entire Connection Configuration Manager**.

Quitting the Configuration Manager

When you quit the Configuration Manager, the settings in the **View** menu as well as position and size of the application window are stored in the Windows Registry. The next time, you start the Configuration Manager, its application window is restored as it appeared when you last used it.

▶ To quit the Configuration Manager

- From the **File** menu, choose **Exit**.

Or:

Choose **Close** from the Control menu.

Or:

Click the corresponding standard button in the title bar.

Startup Parameters

The Configuration Manager is started by invoking *Pccadmin.exe*.

If you create a shortcut for *Pccadmin.exe*, you can modify its properties in order to define the user name and password with which the Configuration Manager is to be started.

Note:

This information applies only to shortcuts on your desktop (it does not apply to the shortcut in the Start menu or a copy of it).

The syntax for starting the Configuration Manager is the following:

```
[drive:\path\]Pccadmin.exe username password
```

User name and password are optional parameters.