

Messages and Codes

Version 5.5.2

October 2020

This document applies to Version 5.5.2 and all subsequent releases.

Specifications contained herein are subject to change and these changes will be reported in subsequent release notes or new editions.

Copyright © 2020 Software AG, Darmstadt, Germany and/or Software AG USA, Inc., Reston, VA, USA, and/or its subsidiaries and/or its affiliates and/or their licensors.

The name Software AG and all Software AG product names are either trademarks or registered trademarks of Software AG and/or Software AG USA, Inc. and/or its subsidiaries and/or its affiliates and/or their licensors. Other company and product names mentioned herein may be trademarks of their respective owners.

Detailed information on trademarks and patents owned by Software AG and/or its subsidiaries is located at <http://softwareag.com/licenses>.

Use of this software is subject to adherence to Software AG's licensing conditions and terms. These terms are part of the product documentation, located at <http://softwareag.com/licenses/> and/or in the root installation directory of the licensed product(s).

This software may include portions of third-party products. For third-party copyright notices, license terms, additional rights or restrictions, please refer to "License Texts, Copyright Notices and Disclaimers of Third-Party Products". For certain specific third-party license restrictions, please refer to section E of the Legal Notices available under "License Terms and Conditions for Use of Software AG Products / Copyright and Trademark Notices of Software AG Products". These documents are part of the product documentation, located at <http://softwareag.com/licenses> and/or in the root installation directory of the licensed product(s).

Use, reproduction, transfer, publication or disclosure is prohibited except as specifically provided for in your License Agreement with Software AG.

Document ID: OGC-ONOPMESSAGES-552-20210409

Table of Contents

| | |
|--|----|
| Preface | v |
| 1 About this Documentation | 1 |
| Document Conventions | 2 |
| Online Information and Support | 2 |
| Data Protection | 3 |
| I System Messages | 5 |
| 2 System Messages | 7 |
| II Messages in Active Jobs Lists | 9 |
| 3 Messages in Active Jobs Lists | 11 |

Preface

This documentation covers the following topics:

| | |
|--------------------------------------|--|
| System Messages | Explains how to obtain information on system (error) messages. |
| Messages in Active Jobs Lists | Lists the most important messages which may appear in a list of active jobs. |

1 About this Documentation

| | |
|--|---|
| ▪ Document Conventions | 2 |
| ▪ Online Information and Support | 2 |
| ▪ Data Protection | 3 |

Document Conventions

| Convention | Description |
|----------------|--|
| Bold | Identifies elements on a screen. |
| Monospace font | Identifies service names and locations in the format <i>folder.subfolder.service</i> , APIs, Java classes, methods, properties. |
| <i>Italic</i> | Identifies: Variables for which you must supply values specific to your own situation or environment. New terms the first time they occur in the text. References to other documentation sources. |
| Monospace font | Identifies: Text you must type in. Messages displayed by the system. Program code. |
| { } | Indicates a set of choices from which you must choose one. Type only the information inside the curly braces. Do not type the { } symbols. |
| | Separates two mutually exclusive choices in a syntax line. Type one of these choices. Do not type the symbol. |
| [] | Indicates one or more options. Type only the information inside the square brackets. Do not type the [] symbols. |
| ... | Indicates that you can type multiple options of the same type. Type only the information. Do not type the ellipsis (...). |

Online Information and Support

Software AG Documentation Website

You can find documentation on the Software AG Documentation website at <https://documentation.softwareag.com>.

Software AG Empower Product Support Website

If you do not yet have an account for Empower, send an email to empower@softwareag.com with your name, company, and company email address and request an account.

Once you have an account, you can open Support Incidents online via the eService section of Empower at <https://empower.softwareag.com/>.

You can find product information on the Software AG Empower Product Support website at <https://empower.softwareag.com>.

To submit feature/enhancement requests, get information about product availability, and download products, go to [Products](#).

To get information about fixes and to read early warnings, technical papers, and knowledge base articles, go to the [Knowledge Center](#).

If you have any questions, you can find a local or toll-free number for your country in our Global Support Contact Directory at https://empower.softwareag.com/public_directory.aspx and give us a call.

Software AG TECHcommunity

You can find documentation and other technical information on the Software AG TECHcommunity website at <http://techcommunity.softwareag.com>. You can:

- Access product documentation, if you have TECHcommunity credentials. If you do not, you will need to register and specify "Documentation" as an area of interest.
- Access articles, code samples, demos, and tutorials.
- Use the online discussion forums, moderated by Software AG professionals, to ask questions, discuss best practices, and learn how other customers are using Software AG technology.
- Link to external websites that discuss open standards and web technology.

Data Protection

Software AG products provide functionality with respect to processing of personal data according to the EU General Data Protection Regulation (GDPR). Where applicable, appropriate steps are documented in the respective administration documentation.

I System Messages

2 System Messages

You can obtain additional information on the system messages that can appear in the Entire Operations version installed at your site.

➤ **To display the long text for a short system message**

- Enter the `HELP` direct command in the **Command** input field for the message (here: `EOR0024 - Invalid Date Format`) received:

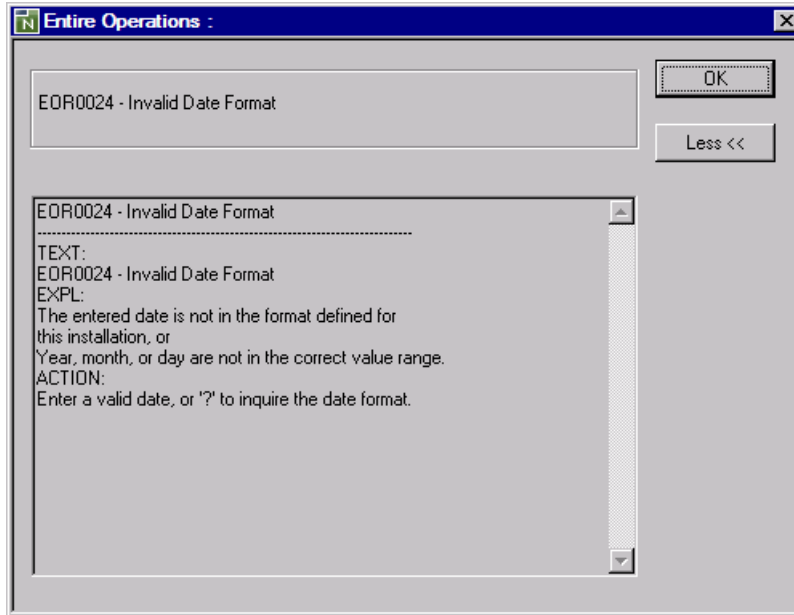
For example:

```
HELP EOR0024
```

(`EORnnnn` for Entire Operations messages or `NATnnnn` for Natural messages)

Press `ENTER`.

A help dialog opens with additional explanations and (if relevant) advice on how to correct an error:



For further information on the `HELP` direct command, see the relevant section in the *Direct Commands* documentation.

II Messages in Active Jobs Lists

3

Messages in Active Jobs Lists

This section lists the most important messages which may appear in the **Message** column of the **List Active Jobs** window (see the *User's Guide*).

Most messages speak for themselves, but for some messages, an explanation is provided below.

Job activated

| | |
|--------------|--|
| Explanation: | The job has been loaded to the active queue. |
|--------------|--|

Cyclic job executed

Ended not ok - <job step> <condition code>

| | |
|--------------|--|
| Explanation: | Job ended not OK. See condition code and job step (z/OS only). |
|--------------|--|

Ended ok

| | |
|--------------|------------------------|
| Explanation: | The job terminated OK. |
|--------------|------------------------|

HOLD in Spool Input Queue

Job disappeared from Spool Queue

Awaiting JCL Load

Job failed - JCL Error

Job not run - JCL Error

Job terminated - In Spool Output Queue

| | |
|--------------|--|
| Explanation: | The job terminated but has not been examined by the Monitor yet. |
|--------------|--|

Member Name missing

Waiting for submission

Job resubmitted

| | |
|--------------|--|
| Explanation: | The job has been resubmitted but has not been recognized by the Monitor yet. |
|--------------|--|

Start Time <date> <time>

| | |
|--------------|--|
| Explanation: | The earliest start time for a job, unless its type is cyclic. Job waits. |
|--------------|--|

Next Start Time <date> <time>

| | |
|--------------|--|
| Explanation: | The earliest (next) start time for cyclic jobs. Job waits. |
|--------------|--|

Latest Start <date> <time> exceeded

Submitted as job NNNN

| | |
|--------------|-------------------------------------|
| Explanation: | The job was submitted successfully. |
|--------------|-------------------------------------|

Job XXXX Waiting in Spool Input Queue**Cannot delete <in-condition>-<run-number>-<in-condition-reference> - in use**

| | |
|--------------|---|
| Explanation: | The specified in-condition is used by at least one job. |
|--------------|---|

Condition <in-condition> not satisfied**<condition> - <run> - <date> not found**

| | |
|--------------|--|
| Explanation: | The job is waiting for one or more input conditions to be fulfilled. |
|--------------|--|

User Rtn <user exit> called non-existent program**Recov. Network <network> not found****<Message from User Exit>**

| | |
|--------------|---|
| Explanation: | A user exit can return a user-defined message text for the active jobs display. The message is displayed only if the user exit returns a not OK status. |
|--------------|---|

Job variables not supported for <operating system>

| | |
|--------------|--|
| Explanation: | Job variables are only allowed in the BS2000 operating system. |
|--------------|--|

JV <job variable> not matching**User Switch <BS2000 user ID / BS2000 user switch> is on**

| | |
|--------------|---|
| Explanation: | The BS2000 user switch is on, although it should not be on. |
|--------------|---|

User Switches not supported for <operating system>

| | |
|--------------|--|
| Explanation: | User switches are only allowed in the BS2000 operating system. |
|--------------|--|

User Switch <BS2000 user ID / BS2000 user switch> not on

Node NNN undefined

| | |
|--------------|---|
| Explanation: | The execution node cannot be found in the node table. |
|--------------|---|

Node NNN not active

| | |
|--------------|-----------------------------------|
| Explanation: | The execution node is not active. |
|--------------|-----------------------------------|

Prerequ. Check: Node NNN Error XXXX

| | |
|--------------|--------------------------------------|
| Explanation: | An error occurred during node check. |
|--------------|--------------------------------------|

NNN tape units required

| | |
|--------------|--|
| Explanation: | There are not enough tape units available. |
|--------------|--|

Resource <resource> undefined

| | |
|--------------|---|
| Explanation: | The indicated resource cannot be found within the resource definitions. |
|--------------|---|

Res. <resource> - requ. NNNNNNNNNN.NN avail. NNNNNNNNNN.NN

| | |
|--------------|--|
| Explanation: | The requested amount of a specified resource exceeds the available amount of it. |
|--------------|--|

Reference <in-condition-reference> Format Error NNNN

| | |
|--------------|--|
| Explanation: | A format error for an input condition reference has been detected. |
|--------------|--|

Prq. File Check - Symbol missing

| | |
|--------------|---|
| Explanation: | The symbol to be replaced in the file name cannot be found in the symbol table. |
|--------------|---|