

Installation and Setup

Version 5.5.2

October 2022

This document applies to Version 5.5.2 and all subsequent releases.

Specifications contained herein are subject to change and these changes will be reported in subsequent release notes or new editions.

Copyright © 2006-2022 Software AG, Darmstadt, Germany and/or Software AG USA, Inc., Reston, VA, USA, and/or its subsidiaries and/or its affiliates and/or their licensors.

The name Software AG and all Software AG product names are either trademarks or registered trademarks of Software AG and/or Software AG USA, Inc. and/or its subsidiaries and/or its affiliates and/or their licensors. Other company and product names mentioned herein may be trademarks of their respective owners.

Detailed information on trademarks and patents owned by Software AG and/or its subsidiaries is located at <http://softwareag.com/licenses>.

Use of this software is subject to adherence to Software AG's licensing conditions and terms. These terms are part of the product documentation, located at <http://softwareag.com/licenses/> and/or in the root installation directory of the licensed product(s).

This software may include portions of third-party products. For third-party copyright notices, license terms, additional rights or restrictions, please refer to "License Texts, Copyright Notices and Disclaimers of Third-Party Products". For certain specific third-party license restrictions, please refer to section E of the Legal Notices available under "License Terms and Conditions for Use of Software AG Products / Copyright and Trademark Notices of Software AG Products". These documents are part of the product documentation, located at <http://softwareag.com/licenses> and/or in the root installation directory of the licensed product(s).

Use, reproduction, transfer, publication or disclosure is prohibited except as specifically provided for in your License Agreement with Software AG.

Document ID: OGC-ONOPINSOPS-552-20221013

Table of Contents

Preface	v
1 About this Documentation	1
Document Conventions	2
Online Information and Support	2
Data Protection	3
2 Installing and Configuring Entire Operations GUI Client	5
Server Prerequisites	6
Installation Notes	6
Installation on Windows	7
Installing Entire Operations Using Software AG Installer	8
Initializing Entire Operations GUI Client	12
Customizing the Initialization Settings	14
Starting Entire Operations GUI Client	17
Customizing the Entire Operations GUI Client Startup	19

Preface

This document describes the installation procedure and configuration settings for Entire Operations GUI Client.



Note: Before beginning the installation process and setting up your environment, be sure to read the current Entire Operations *Release Notes* for information on software and hardware requirements, data migration, known issues and changes to the documentation.

For important last-minute information, see the Readme file supplied with the current Entire Operations version or cumulative fix.

Installing and Configuring Entire Operations GUI Client	How to install, start and customize Entire Operation GUI Client.
---	--

1 About this Documentation

▪ Document Conventions	2
▪ Online Information and Support	2
▪ Data Protection	3

Document Conventions

Convention	Description
Bold	Identifies elements on a screen.
Monospace font	Identifies service names and locations in the format <code>folder.subfolder.service</code> , APIs, Java classes, methods, properties.
<i>Italic</i>	Identifies: Variables for which you must supply values specific to your own situation or environment. New terms the first time they occur in the text. References to other documentation sources.
Monospace font	Identifies: Text you must type in. Messages displayed by the system. Program code.
{ }	Indicates a set of choices from which you must choose one. Type only the information inside the curly braces. Do not type the { } symbols.
	Separates two mutually exclusive choices in a syntax line. Type one of these choices. Do not type the symbol.
[]	Indicates one or more options. Type only the information inside the square brackets. Do not type the [] symbols.
...	Indicates that you can type multiple options of the same type. Type only the information. Do not type the ellipsis (...).

Online Information and Support

Product Documentation

You can find the product documentation on our documentation website at <https://documentation.softwareag.com>.

In addition, you can also access the cloud product documentation via <https://www.software-ag.cloud>. Navigate to the desired product and then, depending on your solution, go to “Developer Center”, “User Center” or “Documentation”.

Product Training

You can find helpful product training material on our Learning Portal at <https://knowledge.softwareag.com>.

Tech Community

You can collaborate with Software AG experts on our Tech Community website at <https://tech-community.softwareag.com>. From here you can, for example:

- Browse through our vast knowledge base.
- Ask questions and find answers in our discussion forums.
- Get the latest Software AG news and announcements.
- Explore our communities.
- Go to our public GitHub and Docker repositories at <https://github.com/softwareag> and <https://hub.docker.com/publishers/softwareag> and discover additional Software AG resources.

Product Support

Support for Software AG products is provided to licensed customers via our Empower Portal at <https://empower.softwareag.com>. Many services on this portal require that you have an account. If you do not yet have one, you can request it at <https://empower.softwareag.com/register>. Once you have an account, you can, for example:

- Download products, updates and fixes.
- Search the Knowledge Center for technical information and tips.
- Subscribe to early warnings and critical alerts.
- Open and update support incidents.
- Add product feature requests.

Data Protection

Software AG products provide functionality with respect to processing of personal data according to the EU General Data Protection Regulation (GDPR). Where applicable, appropriate steps are documented in the respective administration documentation.

2 Installing and Configuring Entire Operations GUI Client

■ Server Prerequisites	6
■ Installation Notes	6
■ Installation on Windows	7
■ Installing Entire Operations Using Software AG Installer	8
■ Initializing Entire Operations GUI Client	12
■ Customizing the Initialization Settings	14
■ Starting Entire Operations GUI Client	17
■ Customizing the Entire Operations GUI Client Startup	19

This chapter describes the installation and configuration of Entire Operations GUI Client.

Notation *vrs* or *vr*:

When used in this document, the notation *vrs* or *vr* represents the relevant product version.

Server Prerequisites

The following Software AG products must be installed on the server:

- According to the desired type of communication between the Natural for Windows client with the remote Natural mainframe server environment, one of the following must be installed:
 - EntireX (EXX)* is required for working in a Natural Remote Procedure Call (RPC) environment.
- System Automation Tools (SAT)*.
- Entire System Server (NPR)*.
- Natural for Mainframes (NAT)**, including the Entire System Server Interface (ESX). See the section *Installing Entire System Server Interface* in the *Natural Installation* documentation which is provided with Natural for Mainframes.

* The required version of Natural Development Server or EntireX, and of System Automation Tools and Entire System Server depends on the installed Natural version. See the *Release Notes* which are provided with Natural for Mainframes.

** The required Natural version depends on the Natural ISPF version running on your system.

Installation Notes

Ensure that your desired EntireX Broker is accessible. This means that your installation requires:

- The correct RPC server (SRVNAME) and EntireX Broker (SRVNODE) names to be entered in your Natural parameter module (usually SYSESM2),
- or add Specify RPC Client's Default Server Address (DSF) parameter dynamically at your startup shortcut.



Caution: Ensure that your RPC server has got the definitions for logical files 206 and 91. LFILE 206 must point to your Entire Output Management system file, LFILE 91 must point to your Entire Output Management active data file. If you did not split the Entire Output Management system file, both, LFILES 206 and 91 will point to your Entire Output Management system file, because in this case Entire Output Management system file and active data file are one and the same file.

If Natural Security is installed on the server and server library SYSSAT is protected, the Entire Operations GUI Client user must be linked to library SYSSAT or he has to be a member of a group which possesses a link to SYSSAT.

Installation on Windows

Entire Operations GUI Client can optionally be installed with Natural for Windows. It needs to be installed with either the Natural development environment or the Natural runtime environment. If Entire Operations GUI Client has not yet been installed, proceed as described below. For more information, see the Natural for Windows installation documentation.

➤ To install and configure Entire Operations GUI Client on your local machine

- 1 Start the Software AG Installer and specify all required information on the different panels.



Note: Make sure the machine on which you are going to run the Software AG Installer contains the latest Windows updates. On Windows Version 8.1 and Windows Server 2012R2, the installation will fail if the Microsoft update KB2919355 is missing.

- 2 By default, the text browser of Entire System Management GUI Framework uses the EntireX instance installed by the Software AG Installer.

However, the browser can be configured to use the EntireX libraries located in the path specified with environment variable `EGF_EXX_LIB_PATH`. `EGF_EXX_LIB_PATH` must reference the path of the 32-bit version of the EntireX libraries.

- 3 When the product selection tree is shown, expand the **Natural Products > Natural** node.
- 4 Select Runtime Environment and/or Development Environment.
- 5 Select Entire Systems Management. This installs Mainframe Navigation, Output Management GUI Client and Entire Operations GUI Client. Additionally the EntireX Mini Runtime is installed automatically, if not already existing.
- 6 Choose the Next button to continue with the installation.



Notes:

1. During the Natural installation, an EntireX Mini Runtime environment is installed automatically if EntireX was not previously installed on your machine.
2. Entire Operations GUI Client uses an OCX control to represent netplan diagrams. This OCX is not affected by the language settings you may specify in the Entire Systems Management application frame. The OCX will be installed in German if you are using a German version of the Windows operating system; otherwise an English OCX version is installed on your machine.

3. If Natural Security is installed on the server and server library SYSSAT is protected, the Entire Operations GUI Client user must be linked to library SYSSAT or he has to be a member of a group which possesses a link to SYSSAT.



Tip: If you want to access multiple Entire Systems Management servers with the same SYSESM2 parameter file, you can use the dynamic parameter DFS to overwrite the settings in the parameter file, e.g. `DFS=(NOPvrSRV ,BKR034 , L)`. See the description of the DFS parameter in the *Natural Parameter Reference* documentation for details.

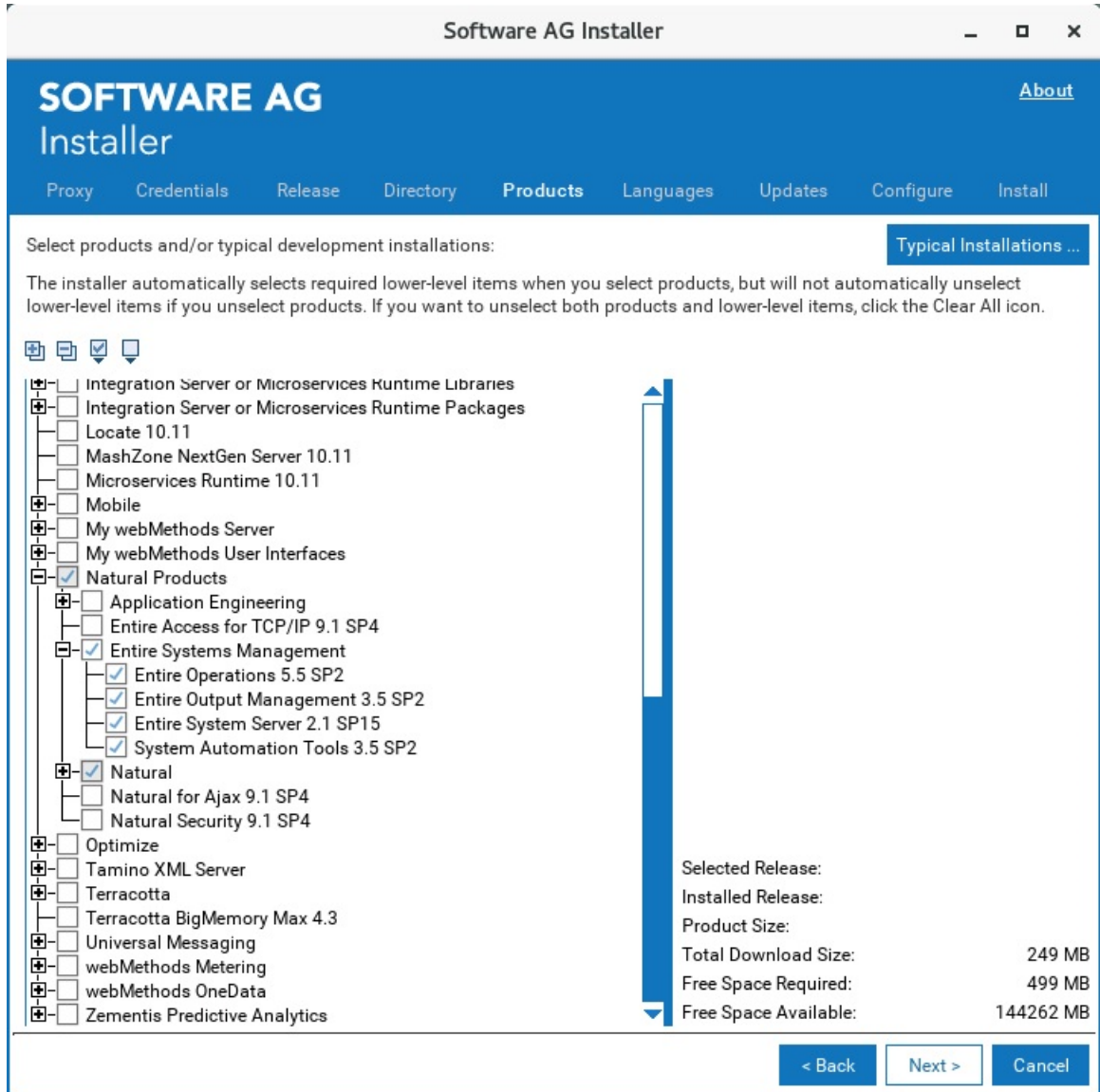
Installing Entire Operations Using Software AG Installer


This installation documentation provides just a brief description on how to install Entire Operations directly on the target machine using the Software AG Installer GUI. For detailed information on the Software AG Installer, see *Using the Software AG Installer*.

➤ To install Entire Operations

Software AG provides a license file for Entire Operations; the installer requires them during a first-time installation. Copy the license file to the machine on which you want to install Entire Operations. You can copy the license file to any temporary location. The installer will ask for the location of your license file and will then copy it to the *common/conf* directory of your installation directory.

- 1 Start the Software AG Installer GUI as described in *Using the Software AG Installer*.
- 2 When the first page of the Software AG Installer GUI (the so-called Welcome panel) is shown, choose the **Next** button repeatedly (and specify all required information on the shown panels as described in *Using the Software AG Installer*) until the panel containing the product selection tree appears. This tree lists the products you have licensed, and which can be installed on the operating system of the machine on which you are installing.
- 3 To install Entire Operations with all its product components, expand the **Natural Products** node, expand the Entire Systems Management node and select **Entire Operations 5.5 SP2**.



 **Note:** Products or product versions which are already installed in the selected installation directory are shown as disabled.

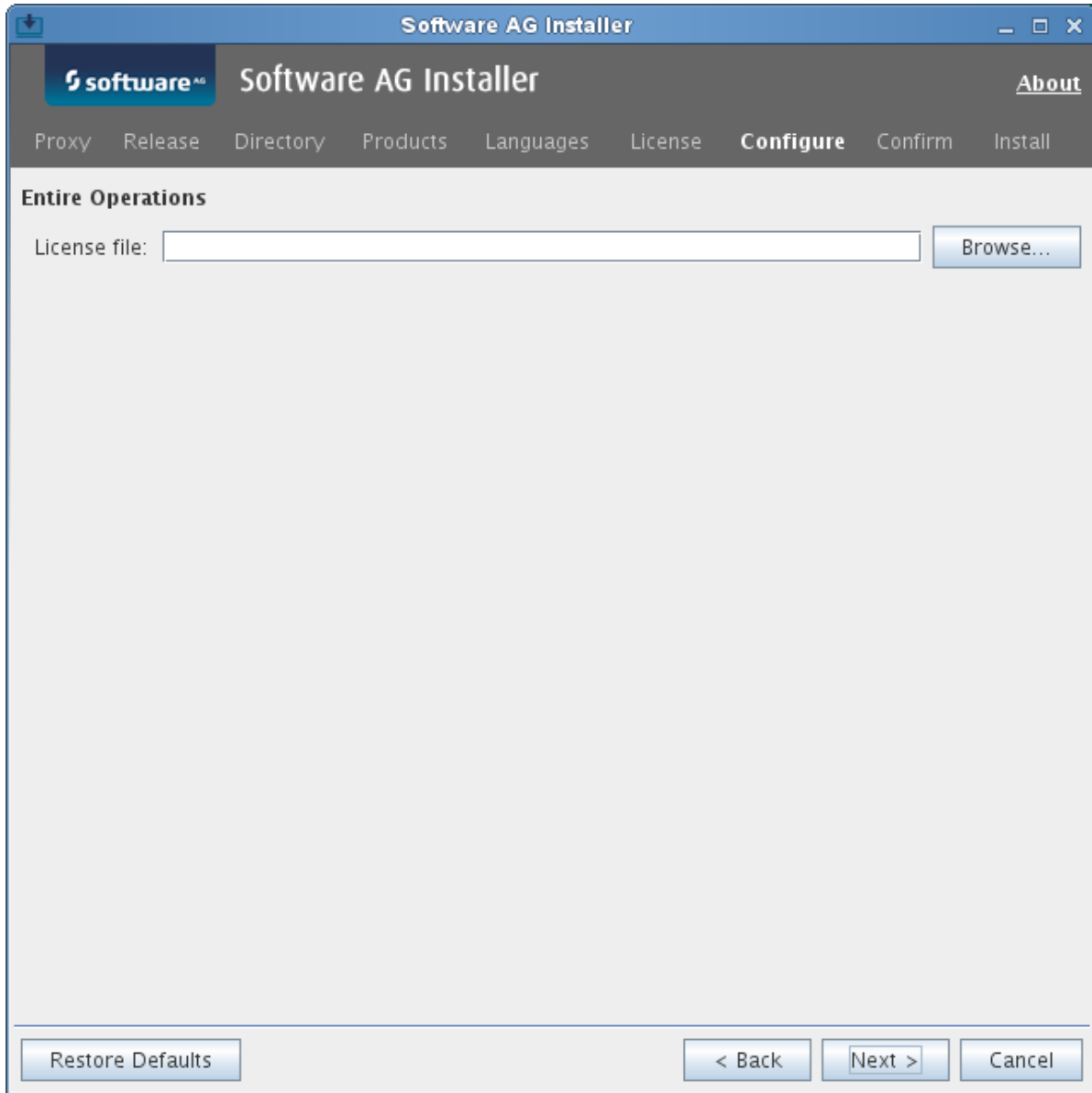
The following products are prerequisite and will be selected too if not already installed:

- Natural
- Entire System Server
- System Automation Tools

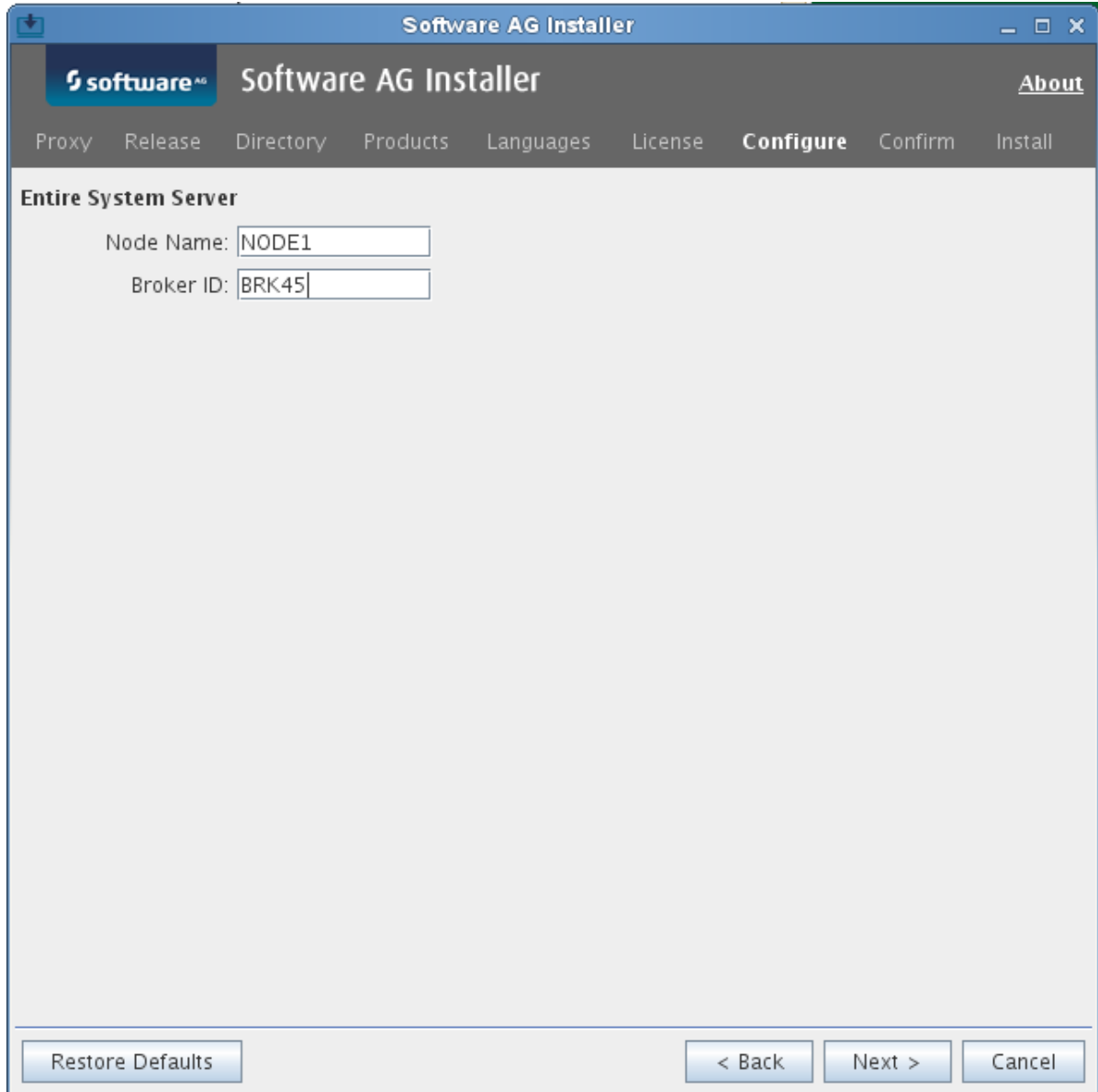
- 4 Choose the **Next** button.
- 5 Read the license agreement, select the check box to agree to the terms of the license agreement, and choose the **Next** button.

- 6 Choose the **Next** button.
- 7 First-time installation only:

Enter the full path to the Natural license file (or use the **Browse** button to select it from a dialog box).



- 8 Choose the **Next** button.
- 9 First time installation only: enter a **Node Name** and a **Broker ID**.



- 10 Choose the **Next** button.
- 11 On the last panel, review the list of products and items you have selected for installation. If the list is correct, choose the **Next** button to start the installation process. When the Software AG Installer has completed the first-time installation, additional configuration steps are required. See [Customizing the Initialization Settings](#) for further details.

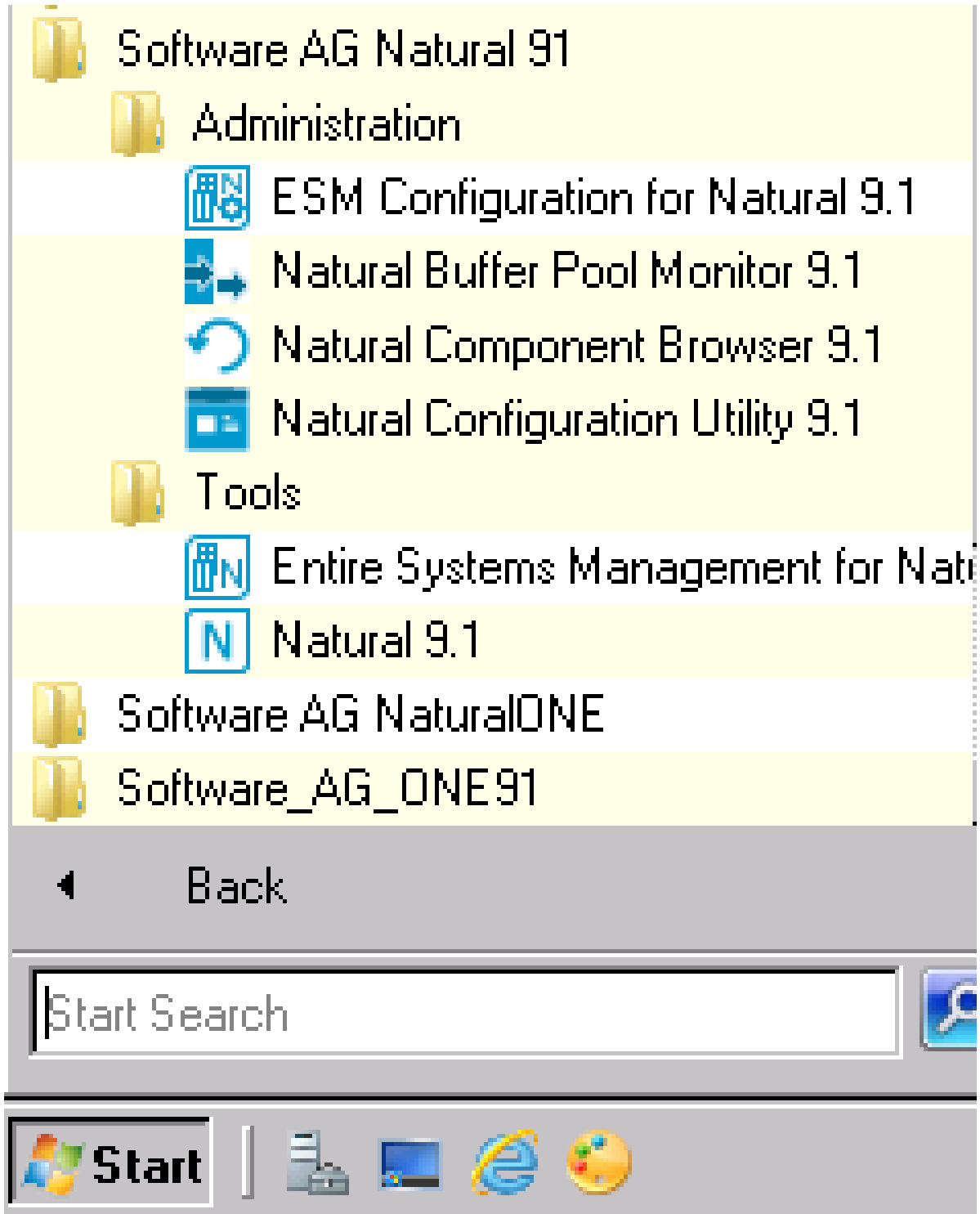
Initializing Entire Operations GUI Client

When the Software AG Installer has finished the installation, you must initialize Entire Operations GUI Client. Only initialized clients will be shown in the Entire Systems Management application window.

> To initialize Entire Operations GUI Client

- 1 From the Windows **Start** menu, choose **All Programs > Software AG > Administration**.

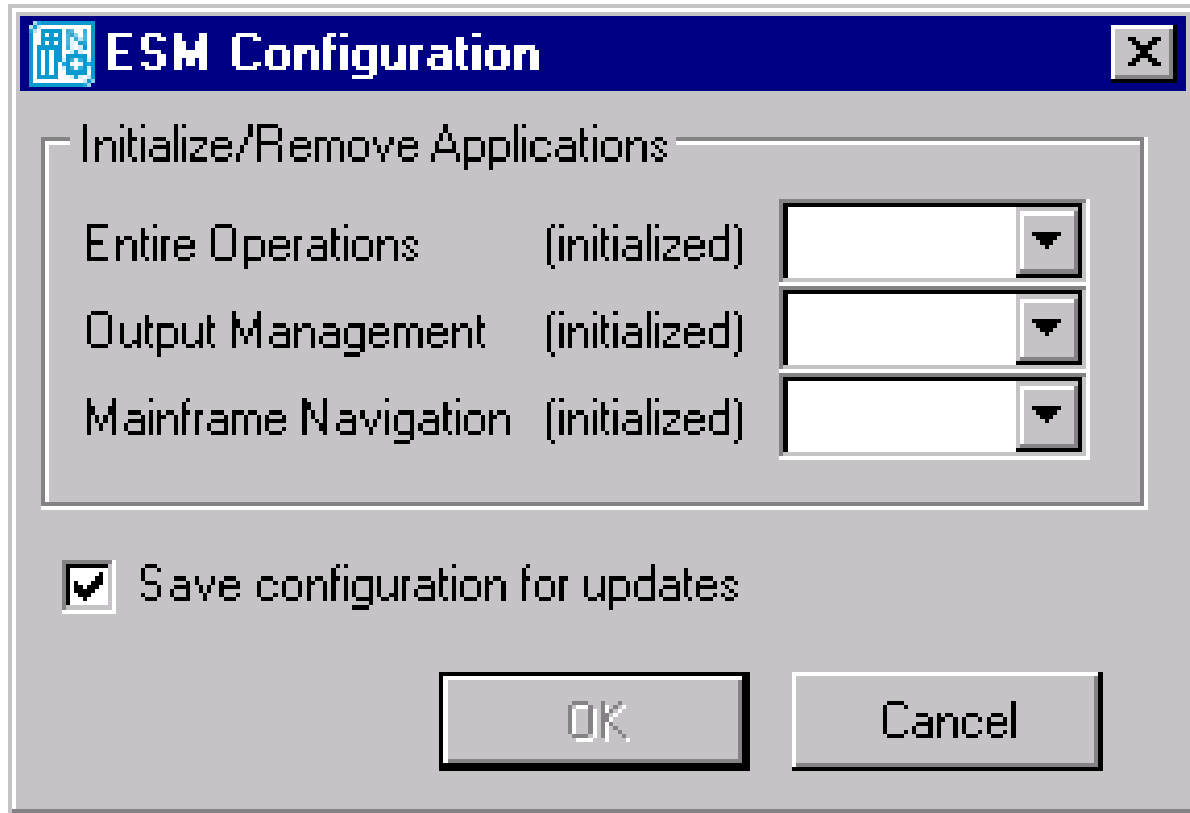
Example:



The group name in the **Start** menu can be changed during installation (by default, this is **Software AG**).

- 2 Choose **ESM Configuration for Natural** *vr.*

The **ESM Configuration** dialog of the ESM Configuration utility opens:



The ESM Configuration utility initializes or removes Entire System Management GUI components (applications) at your installation site.


- 3 From the drop-down list box next to the GUI component you want to use, select **initialize**. Select **remove** if you want to uninstall the GUI component. Leave the box empty if the GUI component is already installed or if no action is required.
- 4 Choose **OK** to complete the initialization.

The **ESM Configuration** dialog closes.

Customizing the Initialization Settings

You can create an `esminit.xml` configuration file to customize the initialization settings for the **ESM Configuration dialog**. You can change the following:


- Default setting for the initialization of a GUI component,
- Default dialog language,
- Default initialization with or without (silent) dialog prompting.

 **Note:** The initialization of GUI components applies to the complete installation and affects all users.

> To change initialization settings with `esminit.xml`

- 1 Create an XML file with the name `esminit.xml` that contains the **basic elements** described in the following section.
- 2 Place `esminit.xml` in the `prof` directory of the used Natural installation (typically: `C:\SoftwareAG\Natural\prof`).
- 3 Execute the `ESINIT-D` program supplied in the Natural SYSSATGF system library.

`ESINIT-P` calls the ESM Configuration utility and determines the initialization settings in the **ESM Configuration dialog**.

 **Note:** The `ESINIT-P` program used in previous Entire Operations versions is still supported. If used, all GUI-specific components available in a Natural system library are initialized.

This section covers the following topics:

- [Basic Elements of `esminit.xml`](#)
- [Example of `esminit.xml`](#)

Basic Elements of `esminit.xml`

The `esminit.xml` must contain the entities `<esmInit>` and `<app>` with the following attributes:

Attributes of `<esmInit>`

Attribute	Description	
<code>silent=</code>	Determines whether the ESM Configuration dialog prompts you to confirm the initialization action. Possible settings:	
	<code>"false"</code>	Opens the dialog for user action (default).
	<code>"true"</code>	Action is performed without dialog.
<code>language=</code>	Sets the language to be used in the dialogs. Possible settings:	
	<code>"1"</code>	Dialog language is English.
	<code>"2"</code>	Dialog language is German.
	If this attribute is not specified, the current language of the installed Natural is used by default.	
<code>update=</code>	Saves the current ESM configuration settings as a file under the name <code>esminit.save.xml</code> in the <code>prof</code> directory of the Natural installation (usually, <code>C:\SoftwareAG\Natural\prof</code>). These	

Attribute	Description
	settings are required for automatic system recovery after an INPL of the Natural SYSSATGF library. Possible values settings:
"true"	Save the configuration (default).
"false"	Do not save the configuration.

Attributes of <app>

Attribute	Description
short=	Identifies the GUI component (application) to be initialized. Possible settings:
"AND"	GUI component Mainframe Navigation
"NOM"	GUI component Entire Output Management
"OPC"	GUI component Entire Operations
	A GUI component not specified in <app> is initialized by default.
action=	Specifies the action to be performed for a GUI component. Possible settings:
"initialize"	Initialize the specified GUI component.
"remove"	Remove the specified GUI component.
	If this attribute is not specified, the GUI component is initialized by default.

Example of esminit.xml

```
<?xml version="1.0" ?>
<!-- language="1" English -->
<!-- language="2" German -->
<esmInit silent="false" language="2">
<!-- GUI component Mainframe Navigation -->
<app short="AND" action="remove" />
<!-- GUI component Entire Output Management -->
<app short="NOM" action=" " />
<!-- GUI component Entire Operations -->
<app short="OPC" action="initialize" />
</esmInit>
```

If you execute `ESINIT-D` with the above XML configuration, the **ESM Configuration dialog** shows the following actions in the drop-down list boxes:

- Entire Output Management has an empty box denoting default action,
- Entire Operations is set to **initialize**,
- Mainframe Navigation is set to **remove**.

Starting Entire Operations GUI Client

> To establish an Entire Operations session

- 1 On your desktop, click on the **Entire Systems Management** shortcut icon.

(A desktop icon for Entire Systems Management is generated automatically after the installation procedure.)

A **Software AG ESM Logon** dialog like the example below opens:



The screenshot shows the 'Software AG ESM Logon' dialog box. It is divided into several sections:

- Natural Security Logon to Server:** Contains a 'User ID' field with the text 'SAGTEST', an empty 'Password' field, and a 'Change password' button.
- EntireX Communicator Broker Security Authorization:** Contains a checkbox labeled 'Different User ID for EntireX Broker Security' which is unchecked. Below it are 'User ID' and 'Password' fields, with 'BRKSECID' entered in the 'User ID' field.
- Default server:** Contains 'Node name: DAEF:4020' and 'Server name: QA82ROP4'.
- Options:** Contains a checkbox labeled 'Restore My Desktop' which is checked.

At the bottom of the dialog are 'OK' and 'Cancel' buttons.

- 2 Enter your credentials:

- Natural Security user ID and password. If required, choose **Change password** to change your password (see the next step).
- (optional) EntireX user ID and password.

Select the **Restore My Desktop** check box (selected by default) if you want to restore your current desktop settings. See also *My Desktop Menu* in the *User's Guide*.

3 Choose **OK** when you are finished.

Entire Operations Client is launched if your Natural Security and EntireX (if relevant) user IDs and passwords are accepted. Otherwise, appropriate error messages occur.

If a password has expired, a dialog like the example prompts you for a password change:



Choose **OK**.

The **Entire Systems Management** main application window (see the *User's Guide*) opens.

Information in the Main Application Window

By default, the current server name and node name are displayed at the top and at the bottom of the main application window.

In addition, you can display text information of your choice at the top or bottom of the object workspace. For this purpose, System Automation Tools provides the user exit `ESUEX02N` in the system library `SYSSAT`. With the user exit, you can specify the text to be displayed, its color and location, and choose to display this text instead of the server name and node name at the top of the main application window. For details, see the corresponding user exit source object `ZSUEX02N` in the library `SYSSAT`.

Customizing the Entire Operations GUI Client Startup

It is possible to disable the display of specific applications in the Entire Operations tree view, even if the applications are installed and shown during normal startup.

➤ To modify your startup:

- Change the `STACK` parameter of your Natural parameter module (usually `SYSESM2`) as follows:

If you want to start ...	STACK Parameter Specification
NGC only	"LOGON SYSSATGF;ESSTRPCD NGC;FIN"
OGC only	"LOGON SYSSATGF;ESSTRPCD OGC;FIN"
OGC and NGC	"LOGON SYSSATGF;ESSTRPCD OGC+NGC;FIN"
OGC and MN	"LOGON SYSSATGF;ESSTRPCD OGC+MN;FIN"

Or:

Make a copy of the Entire Systems Management shortcut (desktop icon) generated by the installation procedure. That is, rename the desktop icon as desired.

Then open the properties of the shortcut and add the following at the end of the target parameter:

If you want to start ...	Target Parameter Specification
NGC only	"STACK=(LOGON SYSSATGF;ESSTRPCD NGC;FIN)"
OGC only	"STACK=(LOGON SYSSATGF;ESSTRPCD OGC;FIN)"
OGC and NGC	"STACK=(LOGON SYSSATGF;ESSTRPCD OGC+NGC;FIN)"
OGC and MN	"STACK=(LOGON SYSSATGF;ESSTRPCD OGC+MN;FIN)"

See the description of the `STACK` parameter in the *Natural Parameter Reference* documentation for details.