

Active Bundles

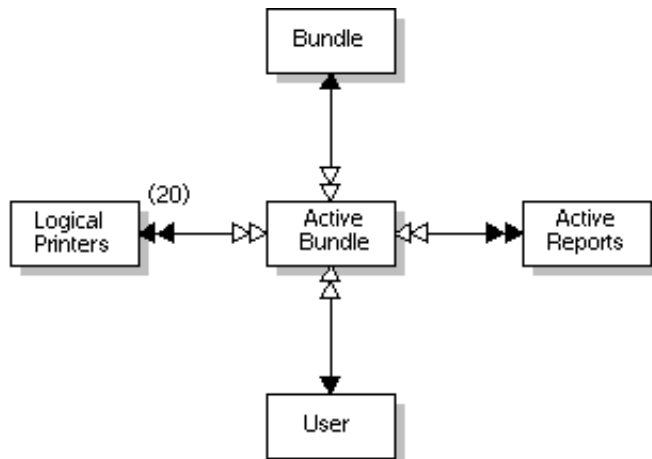
This section covers the following topics:

- What Is an Active Bundle?
 - Invoking the Active Bundles Screen
 - Switching Screen Layout for Active Bundles
 - Listing Active Bundle Contents
 - Browsing an Active Report Contained in a Bundle
 - Deleting an Active Report Contained in a Bundle
 - Modifying Characteristics of an Active Report Contained in a Bundle
 - Modifying an Active Bundle
 - Printing Attributes of Active Bundles
 - Displaying Information on Active Bundles
 - Archiving an Active Bundle
 - Closing an Active Bundle
 - Deleting an Active Bundle
 - Displaying Log Information for an Active Bundle
 - Printing an Active Bundle
 - Reviving an Active Bundle
-

What Is an Active Bundle?

An active bundle is a group of active reports collected from different jobs or SYSOUT datasets and generated by the bundle definition. An active bundle is printed and distributed as one unit.

Object relationship diagram



Invoking the Active Bundles Screen

▶ To select active bundles:

1. Enter 6 in the command line of the "Main Menu".

If long report and bundle names are displayed by the system (see settings in *System Defaults* and *Adding a User Profile*), the "Active Bundles" screen will take the following form:

```

13:54:38          **** ENTIRE OUTPUT MANAGEMENT ****          2008-05-16
User ID XYZ          - Active Bundles -
  
```

Cmd	Bundle	S	Status	Reps	Coord-ID
___	UKSJUPCX	O	opened	6	UKSJU
___	UKSJUBUN	O	opened	9	UKSJU
___	UKSJUPCX	C	closed	2	UKSJU
___	UKSJUBUN	C	closed	3	UKSJU
___	VKA	C	closed	2	VKA
___	VKA	C	closed	1	VKA
___	UKSJU-BUNDLE-LONG-NAME	O	opened	10	UKSJU
___	XSETGGR-BU1	C	closed	1	XSETGGR
___	UKSJU-TYPE-AL	C	closed	1	UKSJU
___	XSETGGR-BU1	C	closed	1	XSETGGR
___	UKSJU-BUNDLE-LONG-NAME	C	closed	21	UKSJU
___	UKSJU-TYPE-AL	C	closed		UKSJU
___	UKSJU-TYPE-AL	C	closed	1	UKSJU
___	UKSJU-TYPE-AL	C	closed	1	UKSJU
___	UKSJU-TYPE-AL	C	closed	1	UKSJU

```

Top Of Data
Command =>
Enter-PF1---PF2---PF3---PF4---PF5---PF6---PF7---PF8---PF9---PF10--PF11--PF12---
      Help      Exit Flip  <   >   -   +   Mastr Rfrsh SwLay Menu
  
```

2. Press PF6 to display further data (right half of Active Bundles list).
3. PF5 takes you back to the main data screen. With PF21 (Ext), you can toggle to short names display.


These screens allow you to perform various functions on bundles and list all bundles processed by Entire Output Management and their status. The bundles are listed in descending order according to their creation date.

Depending on the setting of the user profile field Restrict Abun, you will either see all bundles, with those to which you have access highlighted, or only those bundles to which you have access. You can only enter commands against bundles to which you have access. Administrators have access to all bundles, regardless of the setting of Restrict Abun.

Special PF Keys

Key	Name	Function
PF5	<	Display right half of the screen.
PF6	>	Display left half of the screen.
PF9	Maste	List all master bundles (Bundle Maintenance screen)
PF10	Rfrsh	Refresh Active Bundles screen.
PF11	SwLay	Toggle between General User and Administrator layout.
PF21	Ext	Toggle between display of long and short report/bundle names.

Switching Screen Layout for Active Bundles

 **To switch between the Administrator layout and General User layout of the Active Bundles screen:**

1. Press PF11 (SwLay).

The Administrator Layout for the "Active Bundles" screen (see above) displays reports, coordinator ID, and Open and Close Date/Time information. The General User Layout for the "Active Bundles" screen (see below) displays a Description of the active bundles. If long report and bundle names are displayed by the system (see settings in *System Defaults* and *Adding a User Profile*), the "Active Bundles" screen in the general user layout takes the following form:

Fields

Field	Explanation
Bundle *	Bundle name. Enter selection criteria for the bundle name. The effect of selection by bundle name wildcard depends on the setting of the user profile field Abun List Format. If this is set to 1, wildcard bundle selection results in a window of matching bundle names, from which you can select one. If you are not an administrator, you may only select bundles to which you have access, or those with Public authorization. In the window, use PF10 to toggle between your own and Public authorization. If Abun List Format is set to 2, a list of all matching bundles is presented. An Abun List Format of 1 is likely to generate fewer database accesses.
Status *	Enter selection criteria for bundle status: <ul style="list-style-type: none"> ● Closed - bundle can accept no additional reports. ● Forced - bundle forced to print when retention period expires. ● Opened - bundle is open and contains reports. ● Printing - bundle is being printed.
Reps	Number of reports in the bundle.
Coord-ID *	User ID of the bundle coordinator. For more information, see the section <i>Selecting a Bundle Coordinator</i> .
Description	A short description of the bundle appears here, when you press PF11 (SwLay). Press PF11 again to return to the previous layout. For more information, see the section <i>Switching Screen Layout for Active Bundles</i> .
Open Date/Time	Date and time the bundle was opened.
Close Date/Time	Date and time the bundle was printed
Message	Indicates why the bundle cannot be printed. For example, if no printer has been assigned, the message "No Printer" appears here.

Listing Active Bundle Contents

To list all active reports contained in a bundle:

1. On the "Active Bundles" screen, enter the line command RP next to the bundle for which active reports are to be listed. If long report and bundle names are displayed by the system (see settings in *System Defaults* and *Adding a User Profile*), the "Contents of Bundle" screen will take the following form:

```

17:45:40          **** ENTIRE OUTPUT MANAGEMENT ****          2008-01-17
- Contents of Bundle XSETGGRBU1 / 11012 -

Cmd Group      Seq Report                      Run-No      Lines
-----
___ XSETGGRB    1 PHILINES                        11229       33
___ XSETGGRB    1 PHILINES                        11230       33
___ XSETGGRB    1 PHILINES                        11231       33
___ XSETGGRB    1 PHILINES                        11232       33
___ XSETGGRB    1 PHILINES                        11233       33
___ XSETGGRB    1 PHILINES                        11234       33
___ XSETGGRB    1 PHILINES                        11235       33
___ XSETGGRB    1 PHILINES                        11236       33
___ XSETGGRB    1 PHILINES                        11011       33
___ XSETGGRB   999 DIRECT-INPUT              11242      74K
___ XSETGGRB   999 DIRECT-INPUT              11241      52K
___ XSETGGRB   999 DIRECT-INPUT              11239     1141K
___
___
___
All
Command => _____
Enter-PF1---PF2---PF3---PF4---PF5---PF6---PF7---PF8---PF9---PF10--PF11--PF12---
      Help      Exit Flip      -      +      Ext  <      >      Menu

```

The screen list all active reports contained in the bundle.

2. With PF11 (>) you can shift the display to the right (twice) to display further data of an active bundle. With PF10 (<) you can shift the display to the left again.
3. With PF9 (Ext) you can toggle to short names display.

Line Commands

Command	Function
BR	Browse active report contents.
DE	Delete active report contents.
MO	Modify active report characteristics.

Fields

Field	Explanation
Group	The name of the group in which the report is to be printed. Groups of reports in a bundle are printed in alphabetical order.
Seq	The sequential number of the report in the bundle. The reports are printed in this sequence within the same Group.
Report	Name of the active report contained in the active bundle.
Run-No	Unique number identifying the active report.
Lines	The number of lines in the active report. For binary reports, the size in KB (as indicated by a "K" after the number).
Form	Corresponds to the FORM JCL parameter.
Fcb	Corresponds to the FCB JCL parameter.
Chars	Corresponds to the CHARS JCL parameter.
Flsh	Corresponds to the FLASH JCL parameter.

Browsing an Active Report Contained in a Bundle

To browse an active report contained in a bundle:

1. On the "Contents of Bundle" screen, enter the line command BR next to the active report to be browsed.

The Software AG Editor is invoked and the active report you have selected appears on the screen.

2. ISPF-like local commands enable you to view the active report. For more information, see the section *Browsing an Active Report with the Software AG Editor*.

Deleting an Active Report Contained in a Bundle

To delete an active report contained in a bundle:

1. On the "Contents of Bundle" screen, enter the line command DE next to the active report to be deleted.

If CONFIRM is ON, a window opens asking you to confirm the deletion.

2. To do so, enter the active report name in the input field provided.

A message confirms the deletion.

Note:

A report deleted in an active bundle remains still available as an active report.

Modifying Characteristics of an Active Report Contained in a Bundle

▶ To modify the characteristics of an active report contained in a bundle:

1. On the "Contents of Bundle" screen, enter the line command MO next to the active report whose characteristics are to be modified.

The "Report Characteristics in Bundle" window is displayed, where you can modify the report characteristics:

```

+-----+
!               Report Characteristics In Bundle           !
!               Bundle UKSJUPCX                          !
!               Report: UKSJU-TEST                        !
!               In Bundle                                 !
! Form .....: STD_____ !
! Fcb .....: _____ !
! Chars .....: _____ !
! Flash .....: _____ !
! Copies .....: 1__ !
! Pagedef .....: _____ !
! Formdef .....: _____ !
! Logical Printer ..: _____ !
! Separator Info: Member Start: RS-SJUST End: RS-SJUN   !
!                   Copies: 1__ !
! ! ! ! ! ! ! ! ! ! !
! PF1 Help PF3 Exit PF5 Do PF6 Undo PF9 Ext !
+-----+

```

Fields (z/OS only)

Field	Explanation
Form	Enter the name of the form on which you wish to print. This corresponds to the FORM JCL parameter (system printers only).
Fcb	Enter the Forms Control Buffer. This corresponds to the FCB JCL parameter (system printers only).
Chars	Enter one or more 4-byte character set names. This corresponds to the CHARS JCL parameter (system printers only).
Flash	Corresponds to the FLASH JCL parameter.
Copies	Enter the number of copies to print.
Pagedef	If printing on an IPDS system printer, enter the PAGEDEF JCL parameter.
Formdef	If printing on an IPDS system printer, enter the FORMDEF JCL parameter.
Logical Printer	Enter the name of the logical printer to be used.
Separator Info	
- Member Start	Enter the name of the separator to be printed at the beginning of the report.
- End	Enter the name of the separator to be printed at the end of the report.
- Copies	Enter the number of separator copies to be printed.

Modifying an Active Bundle

To modify an active bundle:

1. On the "Active Bundles" screen, enter the line command MO next to the active bundle you want to modify.

The "Active Bundle > General Attributes" screen is displayed for the bundle you have selected:

```

12:12:13          **** ENTIRE OUTPUT MANAGEMENT ****          2008-10-11
User ID XYZ      - Active Bundle>General Attributes -

Bundle
  Name ..... UKSJUPCX
  Run number ..... 32597

Created ..... 2008-10-10 14:31
Coordinator ID ..... UKSJU___

Print events
  Time schedule..... _____
  Lines exceeded .... 10000____
  Report arrival .... _____
                               _____
                               _____
                               _____
                               _____

Command => _____
Enter-PF1---PF2---PF3---PF4---PF5---PF6---PF7---PF8---PF9---PF10--PF11--PF12---
      Help      Exit Flip Do      Undo      Print      Menu
    
```

2. You can modify the data displayed by entering new data in the input fields. The fields are described below.
3. When you have finished modifying the active bundle, press ENTER to save modifications.
A message confirms that the bundle has been modified.
4. If COMMIT is set to OFF, press PF5 (Do) to save your modifications before exiting.
If you do not, a window is displayed asking you to commit the modifications. To do so, enter "Y".
A message confirms the modifications.

Special PF Keys

Key	Name	Function
PF9	Print	Modify Printing Attributes

Fields

Field	Explanation
Bundle Name	Bundle name.
Run number	(cannot be modified) Internal sequence number.
Created	(cannot be modified) Date and time when first active report arrived for this bundle.
Coordinator ID	Enter the user ID of the person who is responsible for this bundle. If you make no entry here, your user ID is automatically written to this field. (The coordinator's name, address and telephone number can be printed at the top of the front page of the bundle separator, if so desired.) For more information, see the section <i>Selecting a Bundle Coordinator</i> .
Printer events	
Time schedule	The print time is computed at an open time based on the defined time schedule. If 00-01-02 00:00 appears here, it means that no time trigger is in effect.
Lines exceeded	When the report that causes this line number to be exceeded has been written to the bundle, the bundle is closed and scheduled for printing.
Report arrival	Enter up to 10 report names here. The bundle is printed when all these reports arrive. See the section <i>Selecting Reports to Trigger Printing</i> .

Printing Attributes of Active Bundles

 **To modify printing attributes of an active bundle:**

1. Press PF9 on the "Active Bundle > General Attributes" screen.

The "Active Bundle > Printing Attributes" screen appears:

```

12:14:17          **** ENTIRE OUTPUT MANAGEMENT ****          2008-10-11
User ID XYZ      - Active Bundle>Printing Attributes -

Bundle
  Name ..... UKSJUPCX
  Run number ..... 32597

Hold before Print .... Y (Y/N)
Printers ..... UKSJUPRT _____
Copies ..... 1__  _____

Bundle Separator          Print Control Exit
  Start ..... BS-SJUST          NATURAL Member... SJUBUPC2
  End ..... BS-SJUEJ          NATURAL Library... NOM211U_
  Copies ..... 1__

Jobcards
  //UKSJUBUN JOB CLASS=K,MSGCLASS=X_____
  _____
  _____

Command => _____
Enter-PF1---PF2---PF3---PF4---PF5---PF6---PF7---PF8---PF9---PF10---PF11---PF12---
      Help      Exit  Flip  Do      Undo      Ext      Prtr  Menu
    
```

Special PF Keys

Key	Name	Function
PF11	Prtr	Define additional printers .

Fields

Field	Explanation
Bundle	
- Name	Bundle name
- Run number	(cannot be modified) Internal sequence number
Hold Before Print	Enter "Y" to hold bundle printing until released manually. Enter "N" to print the bundle immediately.
Printers	You can enter the names of up to 5 logical printers on which to print the bundle. If printers are specified in the bundle defaults (see <i>Printer fields</i> in the <i>System Administration</i> documentation) they appear here. You can delete or change these. Enter a question mark (?) in one of these fields to open the Printer Selection List, from which you can choose a defined printer. Press PF11 (Prtr) to add more printers on the Additional Printers screen.
Copies	Enter the number of times the bundle is to be printed on the respective printers.
Bundle Separator	If separator values are specified in the Bundle Processing Defaults (see <i>Separator fields</i> in the <i>System Administration</i> documentation), they appear in the (Start) and (End) fields here. You can change or delete these.
- Start	Enter the separator name to be printed at the <i>beginning</i> of the bundle. If this field is omitted, then the standard separator is used.
- End	Enter the separator name to be printed at the <i>end</i> of the bundle. If this field is omitted, then the standard separator is used.
- Copies	Enter the number of separator pages to be printed for the bundle.
Print Control Exit	A printer control exit can be used to decide whether or not a bundle is actually printed after it has been sent to the printouts queue. For example, you may not want to print bundles which only contain one report. A sample exit is supplied in UEXBUNPR in library SYSNOMS.
- Natural Member	Enter the name of the user exit.
- Natural Library	Enter the name of the library containing the user exit.
Jobcards	Enter the job cards used when bundle printing is performed with batch jobs. The following substitution variables can be used: \$USER, \$BUNDLE. If you leave this field blank, the Jobcards specification for the logical printer is used instead.

Defining Additional Printers

 **To define or modify additional printers:**

1. Press PF11 (Prtr) on the "Active Bundles > Printing Attributes" screen.

The "Active Bundle > Additional Printers" screen appears:

```

12:15:34          **** ENTIRE OUTPUT MANAGEMENT ****          2008-10-11
User ID XYZ      - Active Bundle>Additional Printers -

Bundle
Name ..... UKSJUPCX
Run number ..... 32597

Printers  (6-10)..... _____
Copies    (6-10)..... ____  ____  ____  ____  ____

Printers  (11-15).... _____
Copies    (11-15).... ____  ____  ____  ____  ____

Printers  (16-20).... _____
Copies    (16-20).... ____  ____  ____  ____  ____

Command => _____
Enter-PF1---PF2---PF3---PF4---PF5---PF6---PF7---PF8---PF9---PF10--PF11--PF12---
      Help           Exit  Flip  Do   Undo           Ext           Menu

```

On this screen, you can define up to 15 additional printers by specifying:

Field	Explanation
Printers	Specify the names of up to 15 logical printers on which the bundle is to be printed. If you enter a question mark (?) in this field, the printer selection list will appear.
Copies	Specify how many copies are to be printed on each printer.

Displaying Information on Active Bundles

To display additional information on an active bundle:

1. On the "Active Bundles" screen, enter the line command IN next to the bundle for which you want to display information.

A window is displayed, providing the following information on the bundle:

Field	Explanation
Bundle	
- Name/RNB	The bundle name. RNB is the unique internal identifier of the bundle.
- Description	A short description of the active bundle.
Number of	
- Reports	Number of active reports contained in the bundle.
- Lines	Number of lines contained in the bundle.
Date/Time of	
- Open	The date and time the bundle was opened.
- Close	The date and time the bundle was closed.
- Planned Flush	When the bundle is opened, the print time is computed based on the defined time schedule. If 00-01-02 00:00 or nothing at all appears here, it means that no time trigger is in effect.
Expiration Date	
- Force	The day on which the closing and printing of the active bundle is to be forced. This date is computed when the active bundle is opened. It is computed using the Force Flush period defined in the corresponding bundle definition (see field descriptions for Force Flush under <i>Print Events</i> in the section <i>Defining a Bundle</i>).
- Purge	The day on which the active bundle is to be deleted. This data is computed when the active bundle is closed. It is computed using the Retention Period in the corresponding bundle definition (see the field descriptions for Retention Period in the section <i>Defining a Bundle</i>).
Coordinator	
- ID	ID of the bundle coordinator.
- Name	Name of the bundle coordinator.
- Phone	Telephone number of the bundle coordinator.

Archiving an Active Bundle

To mark an active bundle for archiving:

- On the "Active Bundles" screen, enter the line command AR next to the bundle to be marked for archiving.

The bundle is archived the next time the Archiving task is active.

Closing an Active Bundle

▶ To close an active bundle so that it can accept no additional reports:

- On the "Active Bundles" screen, enter the line command CL next to the bundle to be closed.

The message "Closed" appears after the bundle name in the Status column.

If additional reports arrive for the bundle, a new version of the bundle will be opened to accept them.

Deleting an Active Bundle

▶ To delete an active bundle:

1. On the "Active Bundles" screen, enter the line command DE next to the bundle to be deleted.

If CONFIRM is ON, a window opens asking you to confirm the deletion.

2. To do so, enter the name of the active bundle in the input field provided.

A message confirms the deletion.

Displaying Log Information for an Active Bundle

▶ To display log information for an active bundle:

- On the "Active Bundles" screen, enter the line command LO next to the bundle for which log information is to be displayed.

The Log Display screen opens for the bundle selected.

For further details, see the section *LO - Display Log Information for an Object* and the *Log Display -Report screen* in the section *Using Entire Output Management*.

Printing an Active Bundle

▶ To print an active bundle:

1. On the "Active Bundles" screen, enter the line command PR next to the active bundle you want to print.


A printer selection list will be displayed.

2. Select a printer by entering any character in the input field before the appropriate printer.

A message confirms that the bundle has been queued for printing.

Reviving an Active Bundle

This function marks all archived reports in an active bundle to be revived. The reports will be revived the next time the Revive job runs.

 **To revive an active bundle:**

- On the "Active Bundles" screen, enter the line command `RV` next to the bundle to be marked for reviving.