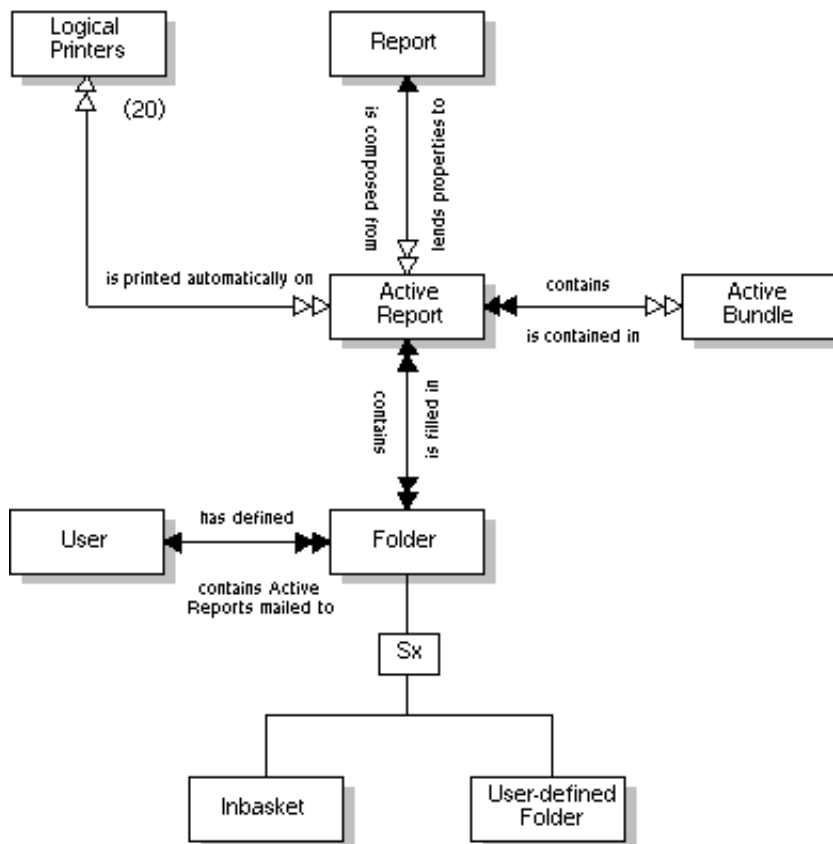


Active Reports

An active report:

- is the output that an addressee receives.
- can be sent to Entire Output Management users either automatically, when the active report is created and the user ID is defined in the User/List field on the "Report Definition > Distribution Attributes" screen, or manually by any authorized user ID at any time.
- is generated by the report definition from all or part of a spool dataset that satisfies the criteria set in the identification attributes of the report definition.
- can be printed automatically on up to 20 predefined logical printers.

Active Report - Object relationship diagram



This section covers the following topics:

- Listing Active Reports
- Modifying an Active Report
- Browsing an Active Report with the Software AG Editor
- Other Active Report Functions