

# Active Bundles

- What is an Active Bundle?
- Available Commands for Active Bundles
- Listing All Active Bundles
- Listing Selected Active Bundles
- Modifying an Active Bundle
- Displaying an Active Bundle
- Deleting an Active Bundle
- Printing an Active Bundle
- Closing an Active Bundle
- Archiving an Active Bundle
- Reviving an Active Bundle
- Displaying Information on an Active Bundle
- Displaying the Active Bundle Log

For further information, see also *Active Reports in an Active Bundle*.

---

## What is an Active Bundle?

An active bundle is a group of active reports collected from different jobs or SYSOUT datasets and generated by the bundle definition. An active bundle is printed and distributed as one unit.

## Available Commands for Active Bundles

 **To list all available commands for active bundles:**

1. In the object workspace, expand the **Active Bundles** folder.
2. Select an active bundle and invoke the context menu.

A list of available commands appears.

The following table briefly explains each command:

Command	Shortcut	Explanation
Active in Bundle	---	List reports contained in an active bundle. A list of reports is displayed to allow browsing of active reports or deletion of the active report from this bundle.
Archive	---	Mark all reports in an active bundle for archiving.
Close	---	Close an active bundle. The bundle can accept no more reports. A new version of the bundle is opened for additional reports.
Delete	Del	Delete an active bundle. Only control information is deleted. The active reports contained in the bundle are not deleted.
Display	Ctrl+D	Display active bundle parameters.
Display Log	F10	Display log information for an active bundle.
Filter	F3	Use selection criteria to list active bundles.
List Active	Ctrl+F8	List all active bundles.
Info	---	Display additional information on an active bundle.
Open	Ctrl+O	Modify active bundle. Note that modifications hold only for this current copy of the bundle and do not affect the bundle definition. Modifications can be performed only if bundle status = Opened.
Print	---	Print an active bundle. The bundle is forced to print no matter what was defined to control printing. This command can be entered only if bundle status = Opened.
Revive	---	Mark all reports in an active bundle for reviving.
Select Subobject	Ctrl+F3	Use selection criteria to list active reports.

## Listing All Active Bundles

### To list all active bundles:

1. In the object workspace, select the **Active Bundles** folder.
2. Invoke the context menu and choose **List Active**.

All active bundles are listed in the content pane.

The fields of the active bundle list are explained below.

### Fields: Active Bundle List

Field	Explanation	
Bundle	Bundle name.	
Run Number	Unique number identifying the active report.	
Status	Bundle status:	
	Closed	Bundle can accept no additional reports.
	Empty	Bundle is empty.
	Flushing	Bundle is being closed.
	Forced	Bundle forced to print when retention period expires.
	Opened	Bundle is open and contains reports.
	Print	Bundle is being printed.
	Printed	Bundle has been printed.
	Processing	Bundle is being processed.
Number of Reports	Number of reports in the bundle.	
Coordinator ID	User ID of the bundle coordinator.	
Open Date/Time	Date and time bundle was opened.	
Close Date/Time	Date and time bundle was closed.	
Message	Indicates why the bundle cannot be printed. For example, if no printer has been assigned, the message "No Printer" appears here.	
Description	Short description of bundle	

▶ **To invoke a list of available commands:**

- Select an active bundle and invoke the context menu.

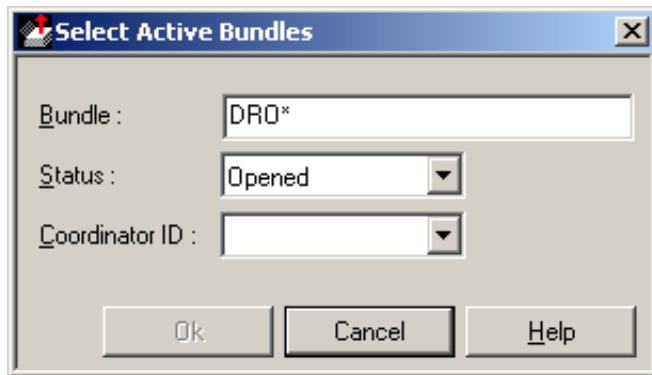
## Listing Selected Active Bundles

▶ **To list active bundles according to selection criteria:**

1. In the object workspace, select the **Active Bundles** folder.
2. Invoke the context menu and choose **Filter**.

The following dialog appears in the content pane.

3. Enter selection criteria for the active bundles, for example:



4. Choose **OK**.

Now only active bundles which satisfy the selection criteria appear in the expanded **Active Bundles** folder in the object workspace.

## Modifying an Active Bundle

- General Attributes
- Printing Attributes
- Selecting Printers for a Bundle

### ▶ To modify the attributes of an active bundle:

1. Select the desired active bundle in the object workspace or in the report list.
2. Invoke the context menu and choose **Open**.

The active bundle is displayed. It consists of: General Attributes and Printing Attributes.

3. To change the desired attributes, choose the appropriate tab: **General** or **Printing**.
4. The corresponding window is displayed, and you can change the data. The individual attributes are described below.
5. When you have finished, choose the **OK** button to save your changes.

### General Attributes

Field	Explanation	
Run Number	Internal sequence number (cannot be modified).	
Created	Date and time when first active report arrived for this bundle (cannot be modified).	
Coordinator ID	ID of the bundle coordinator.	
Print events	Time schedule	The print time is computed at an open time based on the defined time schedule. If 00-01-02 00:00 appears here, it means that no time trigger is in effect.
	Lines exceeded	When the report that causes this line number to be exceeded has been written to the active bundle, the bundle is closed and scheduled for printing.
	Report arrival	The bundle is printed when all these reports arrive.

### Printing Attributes

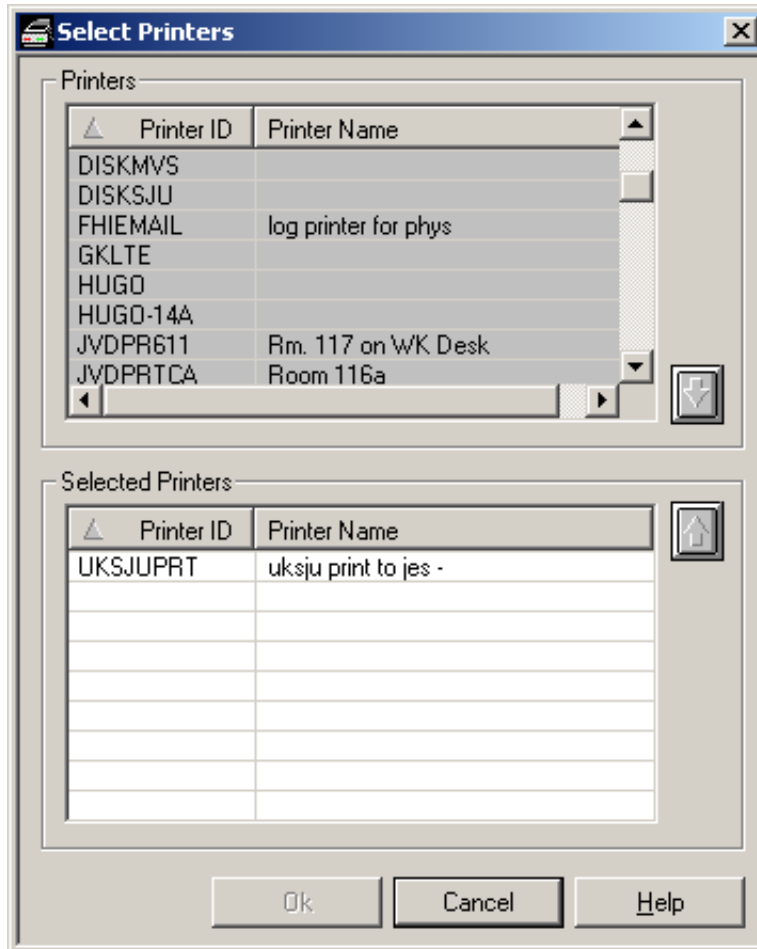
Field	Explanation	
Hold before print	Mark the checkbox to hold bundle printing until released manually, otherwise the bundle is printed immediately.	
Bundle separator	Start	Enter the name of the separator member to be printed at the beginning of the bundle. If this field is omitted, then the standard separator is used.
	End	Enter the name of the separator member to be printed at the end of the bundle. If this field is omitted, then the standard separator is used.
	Copies	Enter the number of separator pages to be printed for the bundle.
Print control exit	Natural Member	Name of user exit.
	Natural Library	Library containing user exit.
Jobcards	Enter the job cards used when Bundle printing is performed with batch jobs. The following substitution variables can be used: §USER, §BUNDLE. If you leave this field blank, the Jobcards specification for the logical printer is used instead. See the <b>Jobcards</b> field under <i>General Attributes</i> in <i>Adding a New Logical Printer</i> .	
Printers	Printer	Use the <b>Select</b> button to select one or more printers from a list of defined logical printers. See <i>Selecting Printers for a Bundle</i> below.
	Copies	Enter the number of times the bundle is to be printed on the respective printers.


## Selecting Printers for a Bundle


### ▶ To select a logical printer from a list of defined printers:

1. Choose the **Select** button to the right of the **Printers/Copies** list.

The following dialog appears:



2. Select a printer from the **Printers** list at the top of the dialog and choose the down arrow  on the right.

The selected printer is written to the **Selected Printers** list in the lower part of the dialog. (To remove a printer from the **Selected Printers** list, select the printer and choose the up arrow  on the right.)

3. When you have finished selecting printers, choose the **OK** button at the bottom of the dialog.

The selected printers now appear in the **Printers/Copies** list.

## Displaying an Active Bundle

### ▶ To display the attributes for an active bundle:

1. In the object workspace or in the active bundle list, select the desired active bundle.
2. Invoke the context menu and choose **Display**.

The attributes of the active bundle are displayed. For an explanation of the attributes and their fields, see *Modifying an Active Bundle*.

## Deleting an Active Bundle

### ▶ To delete an active bundle:

1. In the object workspace or in the active bundle list, select the desired bundle.
2. Invoke the context menu and choose **Delete**.

A dialog appears, asking you to confirm the deletion.

3. Choose **Yes** to delete the active bundle, or **No** to cancel the operation.

## Printing an Active Bundle

### ▶ To print an active bundle:

1. In the object workspace or in the active bundle list, select the desired active bundle.
2. Invoke the context menu and choose **Print**.

The **Print Active Bundle** dialog appears.

3. Choose the **Select** button to the right of the **Printer** field to display a list of printers.
4. Select a printer from the list, and choose the **OK** button.

The name of the selected printer is written into the **Printer** field of the **Print Active Bundle** dialog.

5. Choose the **Print** button to print the bundle and leave it open.

Or:

Choose the **Print and Close** button to print the bundle and close it.

A message confirms that the bundle has been queued for printing.

## Closing an Active Bundle

This function closes an active bundle so that it can accept no additional reports. If additional reports arrive for the bundle, a new version of the bundle is opened to accept them.

 **To close an active bundle:**

1. In the object workspace or in the active bundle list, select the desired active bundle.
2. Invoke the context menu and choose **Close**.

A dialog appears prompting you to confirm the function.

3. Choose the **Yes** button to close the active bundle.

## Archiving an Active Bundle

This function marks an active bundle for archiving. The bundle is archived the next time the archiving task is active.

 **To mark an active bundle for archiving:**

1. In the object workspace or in the active bundle list, select an active bundle that has not been archived.
2. Invoke the context menu and choose **Archive**.

A message confirms the number of reports marked for archiving.

## Reviving an Active Bundle

This function marks all archived reports in an active bundle to be revived. The reports will be revived the next time the revive job runs.

 **To mark an active bundle for reviving:**

1. In the object workspace or in the active bundle list, select an active bundle that has been archived.
2. Invoke the context menu and choose **Revive**.

The **Revive Active Bundles From Archive** dialog appears.

3. Use the list box to the right of the **Revive to** field to select a destination for the revived active bundle: Con-nect, NOM database, JES Spool.
4. When you have made a selection, choose the **OK** button to confirm it.

A message confirms the number of reports marked for reviving.

## Displaying Information on an Active Bundle

This function displays additional information on an active bundle.

 **To display additional information on an active bundle:**



1. In the object workspace or in the active bundle list, select the desired active bundle.

### Fields: Active Bundle Info

Field	Explanation	
Bundle	Run number	Unique internal identifier of active bundle.
	Description	Short description of active bundle.
Number of	Reports	Number of active reports contained in active bundle.
	Lines	Number of lines contained in active bundle.
Coordinator	ID	ID of bundle coordinator.
	Name	Name of bundle coordinator.
	Phone	Phone number of bundle coordinator.
Date/Time of	Open	Date and time bundle was opened.
	Close	Date and time bundle was closed.
	Planned flush	When the bundle is opened, the print time is computed based on the defined time schedule. If 00-01-02 00:00 or nothing at all appears here, it means that no time trigger is in effect.
Expiration date	Force	The day on which the closing and printing of the active bundle is to be forced. This date is computed when the active bundle is opened. It is computed using the <b>Force Flush</b> period defined in the corresponding bundle definition. See <b>Print events - Force Flush</b> in <i>Fields: General Attributes (Components of a Bundle Definition)</i> .
	Purge	The day on which the active bundle is to be deleted. This data is computed when the active bundle is closed. It is computed using the <b>Retention Period</b> in the corresponding bundle definition. See <b>Retention - Period</b> in <i>Fields: General Attributes (Components of a Bundle Definition)</i> .

## Displaying the Active Bundle Log

### ▶ To display the active bundle log:

1. In the object workspace or in the active bundle list, select the desired bundle.
2. Invoke the context menu and choose **Display Log**.

A list of all events concerning the active bundle is displayed.

For each event, the list contains the following information: the date and time when it occurred, the ID of the user or monitor causing it, and a message explaining the event.

### ▶ To display more detailed log information for an entry in the active bundle log:

1. Select an entry from the log information dialog and invoke the context menu.
2. Choose **Info**.

A dialog with detailed information on the selected entry is displayed.