

Natural Business Services

Natural Business Services Installation on Windows

Version 8.2.1

November 2013

This document applies to Natural Business Services Version 8.2.1.

Specifications contained herein are subject to change and these changes will be reported in subsequent release notes or new editions.

Copyright © 2006-2013 Software AG, Darmstadt, Germany and/or Software AG USA, Inc., Reston, VA, United States of America, and/or their licensors.

The name Software AG, webMethods and all Software AG product names are either trademarks or registered trademarks of Software AG and/or Software AG USA, Inc. and/or their licensors. Other company and product names mentioned herein may be trademarks of their respective owners.

Detailed information on trademarks and patents owned by Software AG and/or its subsidiaries is located at <http://documentation.softwareag.com/legal/>.

Use of this software is subject to adherence to Software AG's licensing conditions and terms. These terms are part of the product documentation, located at <http://documentation.softwareag.com/legal/> and/or in the root installation directory of the licensed product(s).

This software may include portions of third-party products. For third-party copyright notices and license terms, please refer to "License Texts, Copyright Notices and Disclaimers of Third-Party Products". This document is part of the product documentation, located at <http://documentation.softwareag.com/legal/> and/or in the root installation directory of the licensed product(s).

Document ID: NBS-NNBSWIN-INSTALL-821-20131119

Table of Contents

Preface	v
1 Introduction	1
2 Installing on Windows	3

Preface

Natural Business Services Installation on Windows describes the installation of Natural Business Services 5.3 on Windows platforms. This includes the installation of the Natural plug-in, Eclipse plug-in, and Visual Studio add-in.

This documentation is intended for those who install and set up Natural Business Services on a Windows platform.

Natural Business Services Installation on Windows covers the following topics:

- Introduction** Describes the software requirements for Natural Business Services 5.3.
- Installing on Windows** Describes the step-by-step procedure to install this version of Natural Business Services on Windows.



Note: Refer to Natural Business Services Release Notes for the latest information about the installation procedure, system requirements, and new features.

1 Introduction

This version of Natural Business Services is supplied on CD and requires the following prerequisites:

- Windows 2003, XP, or Vista operating system



Note: A full installation of Natural Business Services on Windows requires approximately 30 MB.

- EntireX V7.2.1 or higher
- Entire Net-Work V5.9.1 or higher or EntireX Communicator configured to use TCP/IP as the network transport protocol

In addition, the following requirements are based on which SDK you plan to use:



Note: During the installation procedure, you will be prompted to select which SDK components you want to install.

SDK	Prerequisites
Natural plug-in	<ul style="list-style-type: none">■ Natural for Windows 6.2 or 6.3■ Microsoft .NET Framework 2.0
Eclipse plug-in	<ul style="list-style-type: none">■ Eclipse Europa (3.3) or Ganymede (3.4) or higher■ JDK 5.0 or higher for plug-in■ JDK 1.4 or higher for runtime only
Visual Studio add-in	<ul style="list-style-type: none">■ Visual Studio 2005■ Internet Explorer 5.0 or higher for wizard-generated web pages■ .NET Framework 2.0■ Internet Information Services (IIS) 6.0 or higher

2 Installing on Windows

This section describes the installation procedure for Natural Business Services on Windows.

The setup.exe file copies the Natural Business Services configuration and customizable files to the following folder:

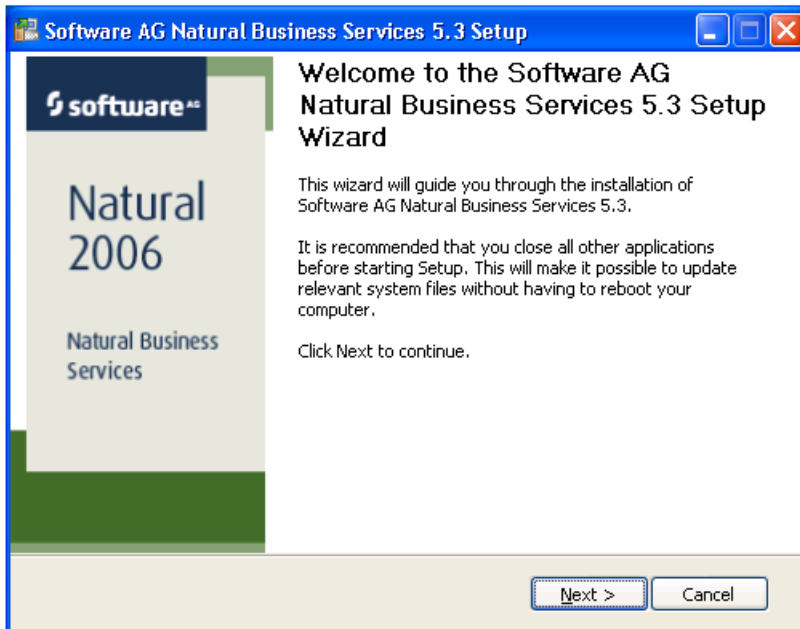
```
%ALLUSERPROFILE%/Application Data/Software AG/Natural Business Services/
```

In addition, if the installation script detects versions installed before 5.3.1.0, it will prompt you to copy all *.config and *.xml files to this folder.

▶ **To install Natural Business Services on Windows:**

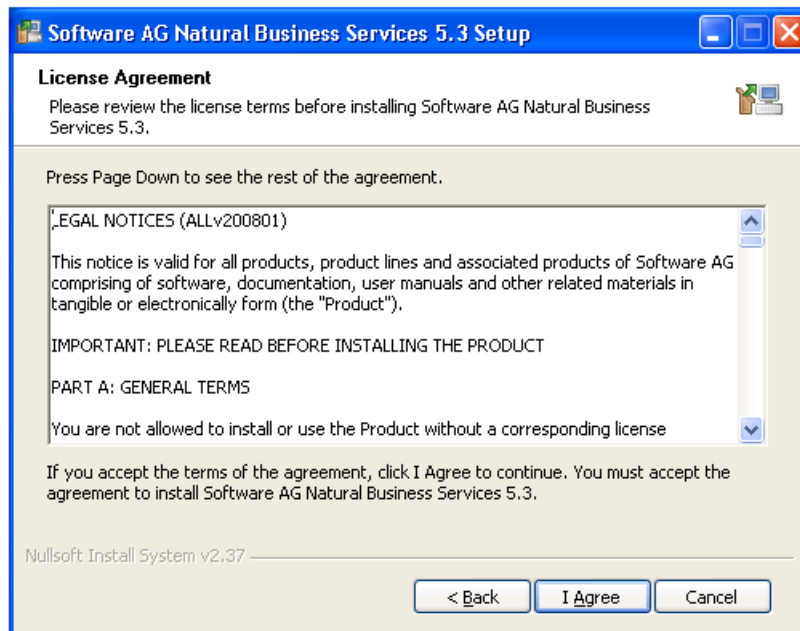
- 1 Insert the CD and start the installation program.

The Welcome panel is displayed. For example:



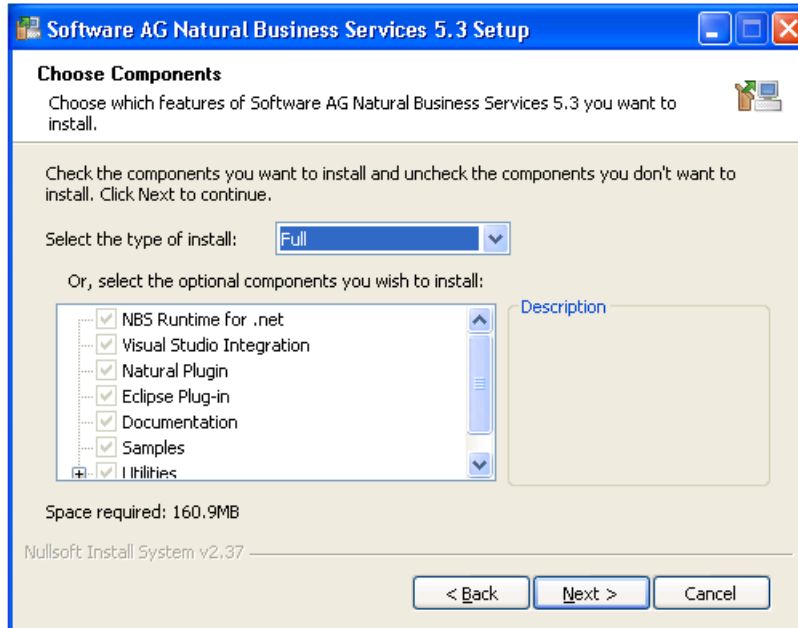
2 Select **Next**.

The **License Agreement** panel is displayed. For example:



- 3 Read the legal notices and select **I Agree** to accept the terms of the license agreement.

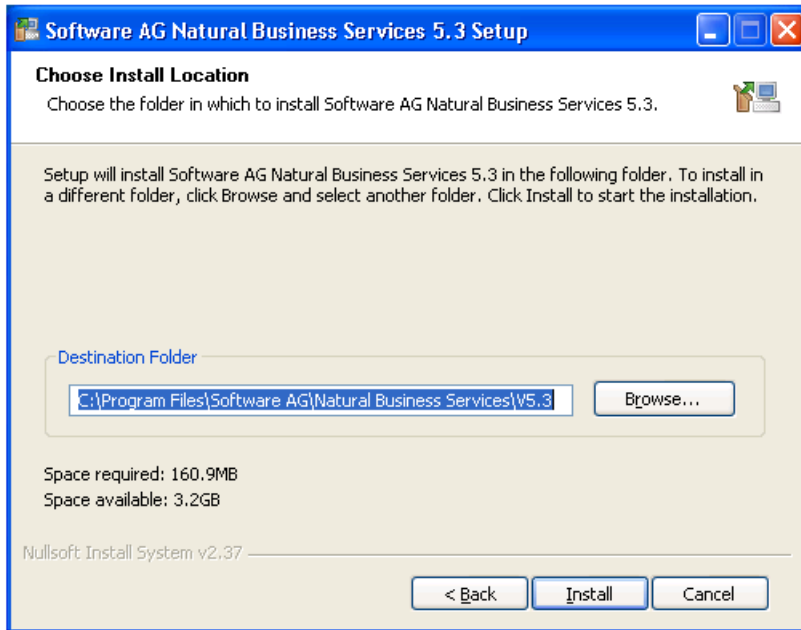
The **Choose Components** panel is displayed. For example:



This panel displays the components that will be installed by default. To view a description of the feature, select the feature on the left and the description is displayed in **Description**.

- 4 Select which type of installation to perform.
- 5 Select **Next**.

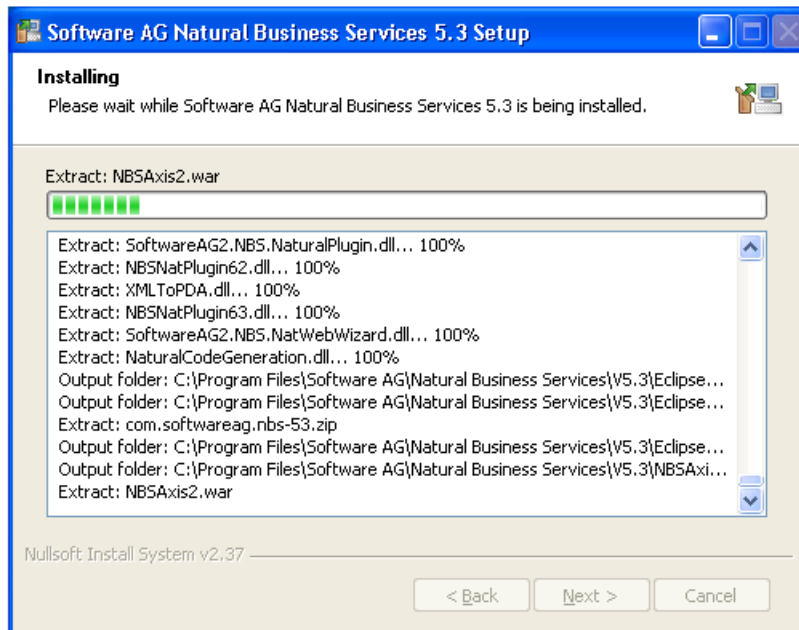
The **Choose Install Location** panel is displayed. For example:



The default location of the folder for Natural Business Services is shown. If this is not the correct folder, select **Browse** to choose a different location.

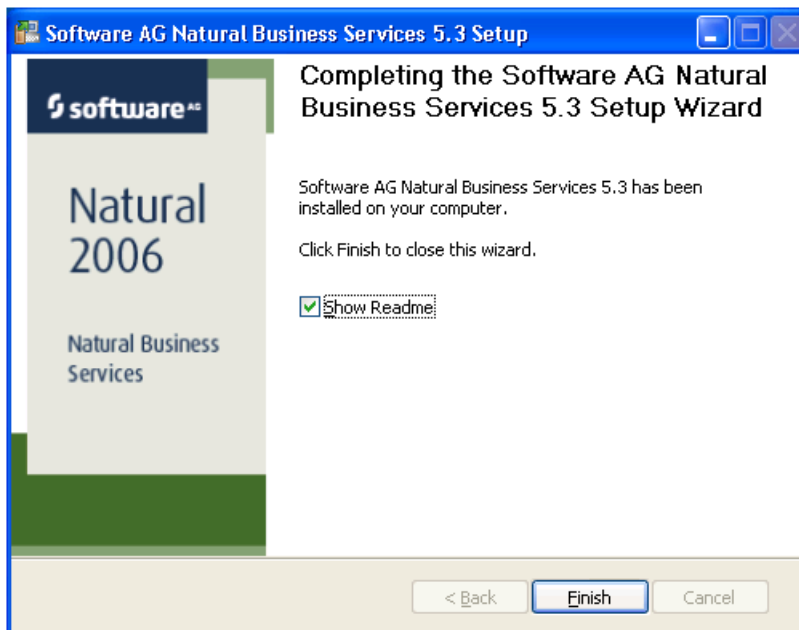
- 6 Select **Install** to begin copying the files.

The panel displays the progress of the installation. For example:



7 Select **Next**.

The last installation panel is displayed. For example:



By default, the **Show Readme** option is selected and the Readme file will be displayed when the wizard closes. You can de-select the option, but we recommend that you view the Readme file. This file contains last-minute information that may not be contained in the current documentation for Natural Business Services.

- 8 Select **Finish** to close the wizard.