

Invoking and Terminating SYSMAIN

This section provides instructions for invoking and terminating the SYSMAIN utility online.

For instructions on invoking and executing SYSMAIN online or in batch mode with a subprogram, see *Using SYSMAIN with Subprogram*.

- Invoking SYSMAIN
 - Terminating SYSMAIN
-

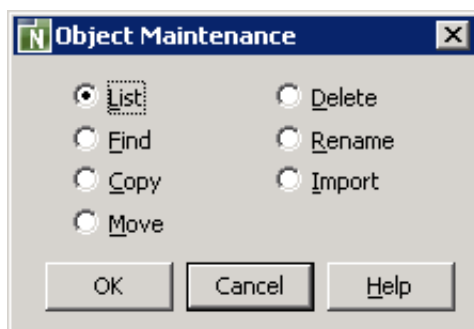
Invoking SYSMAIN

▶ To invoke the SYSMAIN utility

1. Enter the following system command:

```
SYSMAIN
```

An **Object Maintenance** dialog box similar to the example below appears with the SYSMAIN utility menu:



2. Select the radio button that corresponds to the required function by choosing any of the following methods:

Click a radio button.

Or:

Use DOWN ARROW or UP ARROW to navigate to a radio button.

Or:

Press one of the following shortcut keys:

SHIFT+L for **List**

SHIFT+F for **Find**

SHIFT+C for **Copy**

SHIFT+M for **Move**

SHIFT+D for **Delete**

SHIFT+R for **R**ename

SHIFT+I for **I**mport

3. Choose **OK**.

(**Cancel** exits the SYSMAIN utility.)

An **Object Maintenance** dialog box appears for the selected function as shown in the following example of **Copy**:

The screenshot shows the 'Object Maintenance - Copy' dialog box. It features a title bar with a close button. The dialog is organized into several sections: 'Source' with fields for Library (TESTLIB), DBID (30), and FNR (30); a 'Name' field containing an asterisk; a 'Type' section with radio buttons for 'Programming' (selected) and 'Views (DDM)'; a 'Code' section with checkboxes for 'Source', 'Cataloged', and 'XREF'; a 'User ID' field, a 'Date' field (00.00.0000), and a 'Time' field (00:00); and a 'Target' section with fields for Library (TESTLIB), DBID (30), and FNR (30); a 'Name' field containing an asterisk; and checkboxes for 'Confirm on replace' and 'Rename'. At the bottom, there are three buttons: 'OK', 'Cancel', and 'Help'.

Terminating SYSMAIN

▶ To terminate the SYSMAIN utility

- Choose **Cancel**.

Or:

Choose the standard Windows close button.