

Displaying System Information

This chapter provides information on the commands that are available in the **Tools > System Information** menu. The following commands are available:

- System Files
 - Work and Print Files
 - Last Message
 - Technical Information
 - Product Information
-

System Files

You can display the current assignments for all Natural system files (such as database ID and file number).

To display the current system file assignments

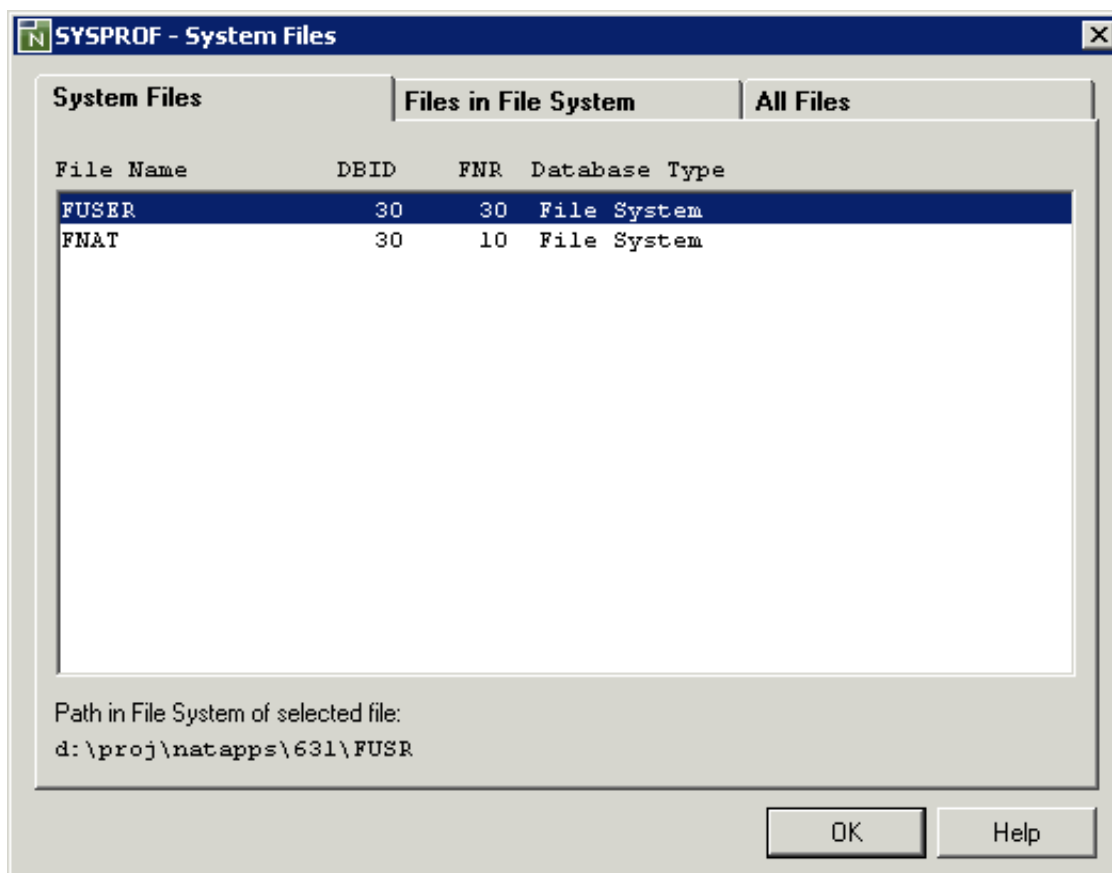
1. In the library workspace, select either the local environment or the remote environment.
2. From the **Tools** menu, choose **System Information > System Files**.

Or:

When the Tools toolbar is shown, choose the following toolbar button.



The assignments are shown in a dialog box. The content of this dialog box depends on the environment that is currently active.



See also the description of the system command SYSPROF.

Work and Print Files

You can display work and print files information.

▶ To display work and print file information

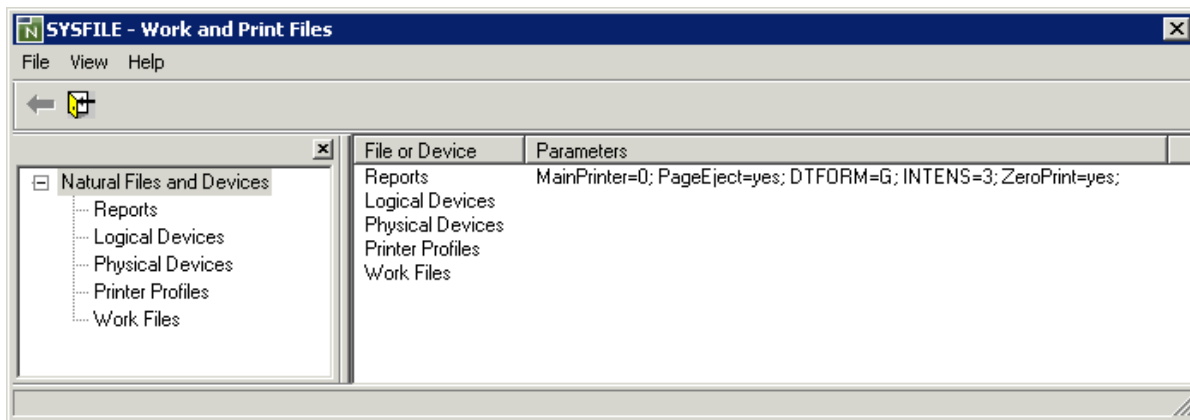
1. In the library workspace, select either the local environment or the remote environment.
2. From the **Tools** menu, choose **System Information > Work and Print Files**.

Or:

When the Tools toolbar is shown, choose the following toolbar button.



The information is shown in a dialog box. The content of this dialog box depends on the environment that is currently active.



3. In the tree, which is shown on the left, select or expand a node to display the corresponding information. For example, select **Work Files** to display information about the defined work files.

See also the description of the system command `SYSFILE`.

4. Optional. From the **View** menu, choose **Product Workspace** to toggle the display of the tree.

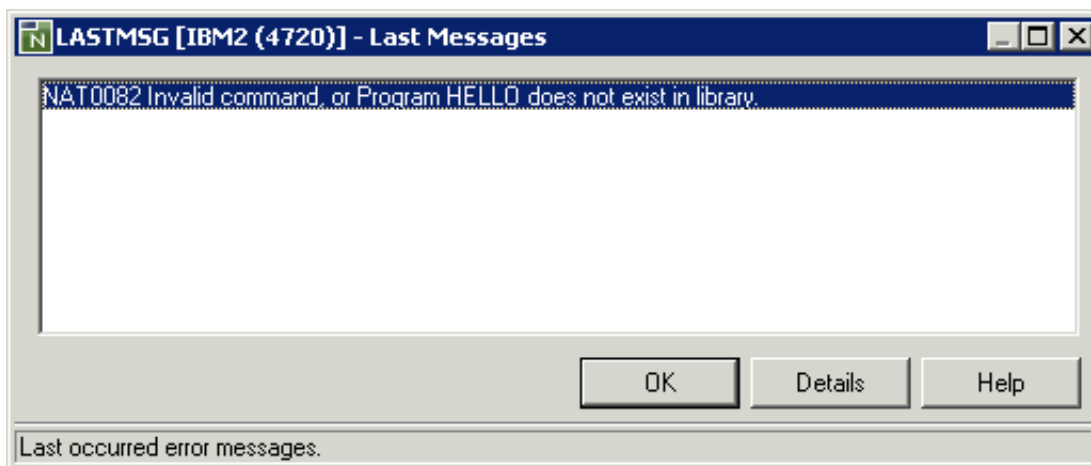
Last Message

You can display additional information about the error situation which has occurred last in the active environment.

▶ To display information on the last error

1. In the library workspace, select either the local environment or the remote environment.
2. From the **Tools** menu, choose **System Information > Last Message**.

When an error has occurred previously in the selected environment, the corresponding error message is shown in a dialog box. Example:



For a remote environment, the environment name is shown in the title bar.

3. Choose the **Details** button to display detailed information on the selected error in a dialog box.

See also the description of the system command LASTMSG.

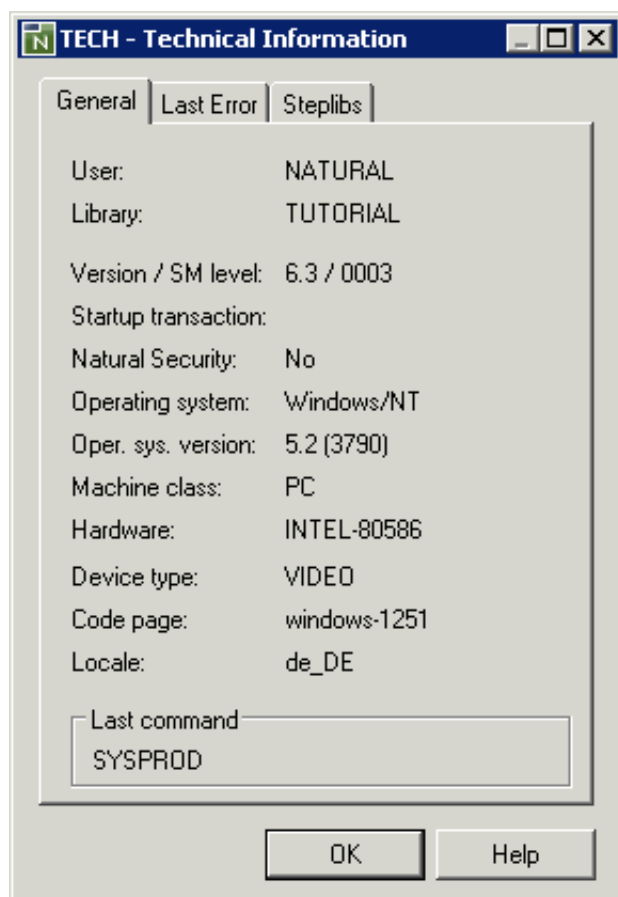
Technical Information

You can display technical information about the active environment (such as the operating system and the version number of the platform-specific Natural installation, or whether Natural Security is active).

► To display technical information

1. In the library workspace, select either the local environment or the remote environment.
2. From the **Tools** menu, choose **System Information > Technical Information**.

The information is shown in a dialog box.



See also the description of the system command TECH.

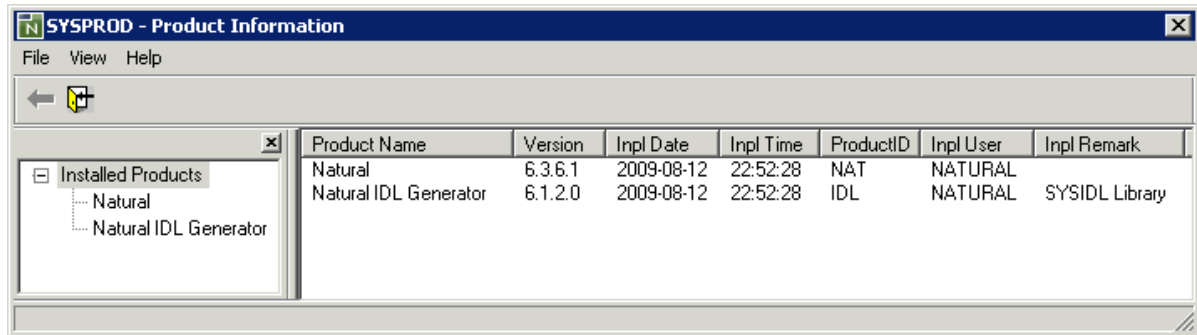
Product Information

You can display a list of all products that are installed in the active environment.

▶ **To display product information**

1. In the library workspace, select either the local environment or the remote environment.
2. From the **Tools** menu, choose **System Information > Product Information**.

The information is shown in a window.



3. Optional. From the **View** menu, choose **Product Workspace** to toggle the display of the tree which is shown on the left.

See also the description of the system command SYSPROD.