

Using Session Parameters

When you start Natural Studio, the Natural parameter file (which contains the so-called "profile parameters") is read to determine the settings of several parameters which customize Natural to your specific environment and requirements. Some of these parameters can be updated after the Natural session is up and running; these are the so-called "session parameters".

Note:

The profile parameters are defined with the Configuration Utility. It is possible to start Natural Studio with your own parameter file. See *Invoking Natural with an Alternative Parameter File* in the *Configuration Utility* documentation.

Modifications to the session parameters are only valid for the current session. When you exit Natural, your modifications are discarded. The next time you start Natural Studio, the settings in the Natural parameter file (which are defined with the Configuration Utility) are used again.

Note:

This default behavior can be changed by setting the profile parameter `PERSIST` in the Configuration Utility.

This chapter describes parameters that can be updated during a running session. The following topics are covered below:

- Invoking the Natural Session Parameters Window
- Locating and Changing a Parameter
- Character Assignments
- Command Execution
- Compiler Options
- Date Representation
- Error Handling
- Field Appearance
- Limits
- Report Parameters
- Remote Procedure Call

For a full description of all available session parameters, see the *Parameter Reference* or follow the links provided in this section.

When you are working in a remote development environment using SPoD, the **Natural Session Parameters** window may contain parameters which do not apply to the Windows version of Natural and which are not listed in this chapter. See the Natural documentation for the corresponding platform for further information on these parameters.

Invoking the Natural Session Parameters Window

A separate application is available for setting the Natural session parameters. This application is invoked from Natural Studio.

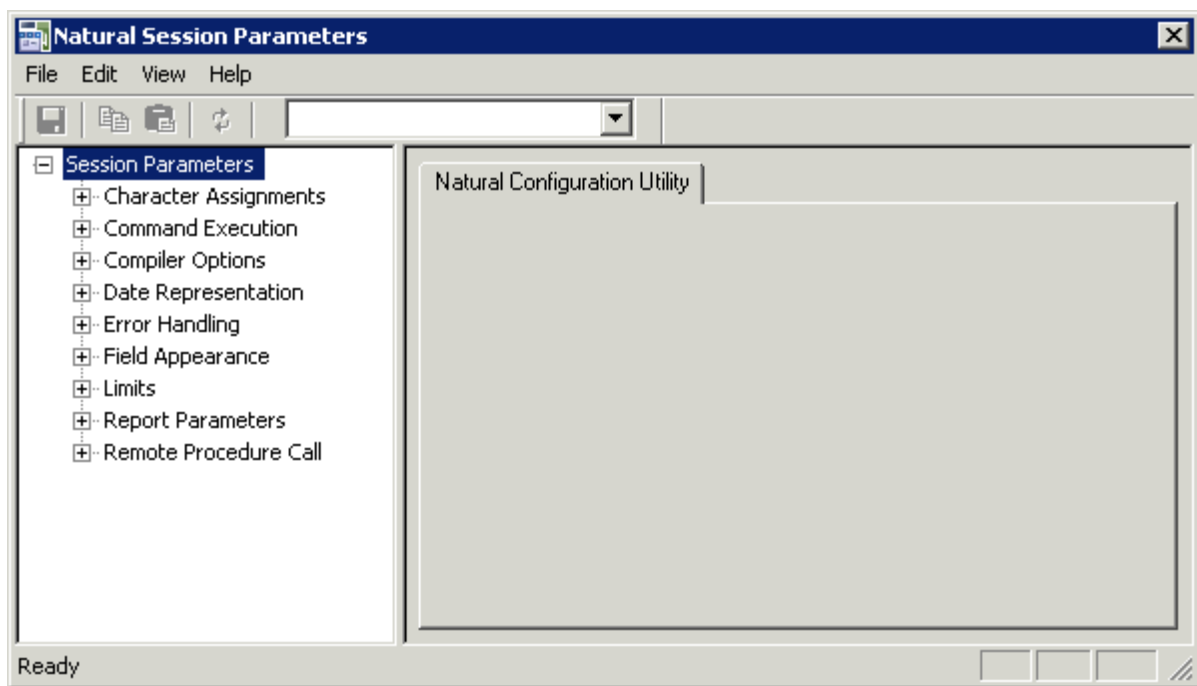
▶ To invoke the Natural Session Parameters window

- From the **Tools**, choose **Session Parameters**.

Note:

This corresponds to issuing the system command GLOBALS without parameters.

The following window appears.



When you select a node for a parameter group in the tree, the corresponding parameters are shown on the right of the window.

Locating and Changing a Parameter

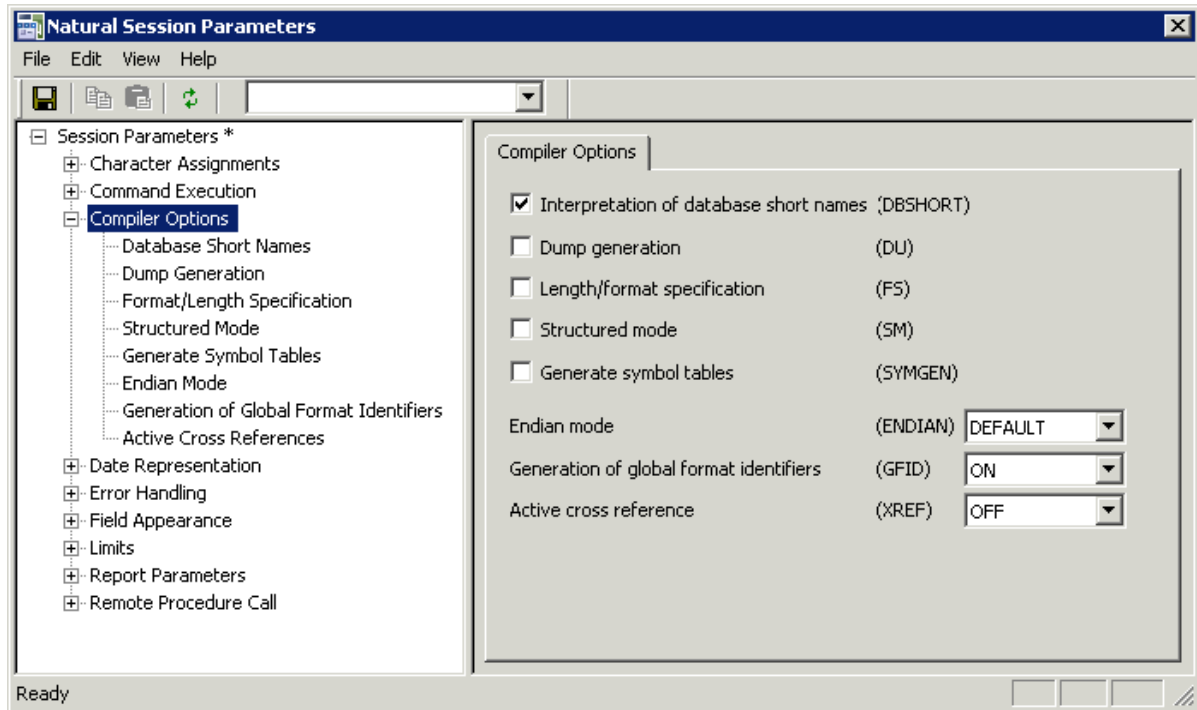
You can locate a parameter in different ways:

- If you know in which parameter group the parameter can be found, you can expand the tree and select the node.
- If you do not know the parameter group, you can search for the parameter.

▶ To locate and change a parameter

1. Select the parameter group containing the parameter that you want to change.

The names of the Natural session parameters are shown in parenthesis on the right of the window, behind the label of the corresponding control. Example:



Or:

Expand the node for a parameter group.

Descriptions for the parameters are shown in the tree, below the node. When you select a description in the tree, all parameters for this group are shown on the right of the window. For the description that has been selected in the tree, the corresponding parameter is also selected on the right of the window and can be modified immediately.

2. Set the parameter to the required value (see the remainder of this section for further information).

Note:

The following applies for check boxes: when a check box is selected, the corresponding parameter is set to "ON"; when a check box is not selected, the corresponding parameter is set to "OFF".

When a parameter has been changed, an asterisk (*) appears next to the top-level node in the tree.

3. Optional. From the **File** menu, choose **Restore Saved** to discard your modifications and thus to restore the settings to the last saved state.

Or:

Choose the following toolbar button:



4. From the **File** menu, choose **Save** to save your modifications.

Or:

Choose the following toolbar button:



Or:

Press CTRL+S.

The new settings are now used in Natural Studio.

5. Close the window in which you have set the session parameters.

To find a parameter

1. From the **Edit** menu of the **Natural Session Parameters** window, choose **Find**.

Or:

Press CTRL+F.

When the toolbar is currently not shown, it is automatically activated and the drop-down list box containing the parameters is opened.

Note:

When the toolbar is already visible, you can simply open the drop-down list box, without having to use the above command.

2. Select the parameter from the drop-down list box in the toolbar.

The parameter group containing the selected parameter is shown on the right of the window. You can now change the parameter setting and save your changes as described above.

Alternatives

Session parameters can also be set as follows:

- Enter the system command `GLOBALS` with the required parameter in the command line (session level).
- Reporting mode only: use the statement `SET GLOBALS` with the required parameter in a Natural program (program level).
- Set the session parameter(s) at the statement and/or field level with certain Natural statements (`FORMAT`, `DISPLAY`, `INPUT`, `REINPUT`, `WRITE`, `PRINT`).

Character Assignments

The following session parameters are used to change default character assignments.

Option	See the <i>Parameter Reference</i> for a description of this session parameter
Terminal command character	CF
Decimal character	DC
Input assign character	IA
Input delimiter character	ID
Thousands separator character	THSEPCH

All character assignments must be mutually exclusive.

Command Execution

The following session parameter is used to control the execution of commands.

Option	See the <i>Parameter Reference</i> for a description of this session parameter
Disable Natural commands	NC

Compiler Options

The following session parameters are used to set options for the Natural compiler.

Option	See the <i>Parameter Reference</i> for a description of this session parameter
Interpretation of database field short names	DBSHORT
Dump generation	DU
Length/format specification	FS
Structured mode	SM
Generate symbol tables	SYMGEN
Endian mode	ENDIAN
Generation of global format identifiers	GFID
Active cross reference	XREF

See also *Compiler Options* in the *Configuration Utility* documentation and the description of the system command COMPOPT.

Date Representation

The following session parameters are used to control the representation of dates.

Option	See the <i>Parameter Reference</i> for a description of this session parameter
Date format in output	DFOUT
Date format in STACK	DFSTACK
Date format in report titles	DFTITLE

Error Handling

The following session parameters are used to control error handling within Natural.

Option	See the <i>Parameter Reference</i> for a description of this session parameter
Automatic REINPUT	REINP
Sound terminal alarm	SA
Record hold processing	WH
Zero division	ZD
Code page conversion error	CPCVERR

Field Appearance

The following session parameters influence I/O handling.

Option	See the <i>Parameter Reference</i> for a description of this session parameter
Filler chars protected	FCDP
Overwriting protected	OPF
Zero printing	ZP
Message line position	ML
Print mode	PM

Limits

The following session parameters are used to prevent a single program from consuming an excessive amount of internal resources.

Option	See the <i>Parameter Reference</i> for a description of this session parameter
Error on loop limit	LE
Processing loop limit	LT

Report Parameters

The following session parameters are used to control various attributes of Natural reports.

Option	See the <i>Parameter Reference</i> for a description of this session parameter
Page eject	EJ
Line size	LS
Page size	PS
Spacing factor	SF
Default input terminal mode	IM

Remote Procedure Call

The following session parameters apply to the Natural Remote Procedure Call (RPC).

Option	See the <i>Parameter Reference</i> for a description of this session parameter
Retry service on alternative server	TRYALT
Send-buffer compression	COMPR
Request timeout	TIMEOUT