

Using Help

This chapter lists all commands that are available in the **Help** menu. The following commands are available:

- Contents
- System Commands
- Natural Errors
- What's New
- Software AG on the Web
- About Natural Studio

When a plug-in (such as Object Description) has been installed and activated, an additional command for invoking help for this plug-in is available in the **Help** menu.

Contents

In addition to the online documentation which is available on the Natural documentation DVD or at <http://documentation.softwareag.com/>, the Natural documentation is also available as an HTML help file (this is a standard Windows online help file with the extension ".chm").

To invoke online help

- From the **Help** menu, choose **Contents**.

The overview page appears.

To invoke context-sensitive help

- Choose the **Help** button in a dialog box.

Or:

Press F1.

See also *Using Context-Sensitive Help* in the *Program Editor* section of the *Editors* documentation.

Help on the current topic appears.

System Commands

You can display help for all Natural system commands that can be entered in the command line. This is part of the online help.

▶ To display help for a system command

1. From the **Help** menu, choose **System Commands**.

The overview page of the system commands documentation appears.

2. Choose a system command in the selection box.

The page appears on which this system command is explained.

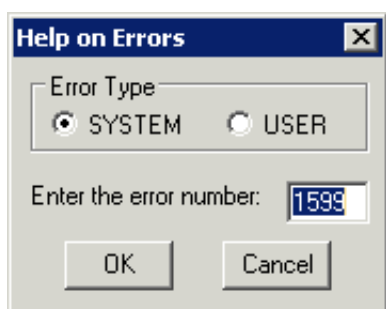
Natural Errors

You can display a message text for an error number. This can either be a Natural system error message or a user-defined error message.

▶ To display help on an error number

1. From the **Help** menu, choose **Natural Errors**.

The following dialog box appears.



2. Select the option button for the required type of help message.
3. Enter the error number for which you want to display the message text.

The message text (long and short explanation) is shown in a dialog box.

What's New

This cascading menu contains the following commands:

- Feature List
- Animated Demos

When a plug-in (such as Object Description) has been installed and activated, an additional command for invoking "What's New?" information for this plug-in is also available.

Feature List

You can display a list of new features in the current version. This list is part of the online help.

▶ To display the new features

- From the **Help** menu, choose **What's New > Feature List**.

Animated Demos

You can display animated demos of the new features in the current version.

▶ To display animated demos

- From the **Help** menu, choose **What's New > Animated Demos**.

An overview page appears listing the animated demos that can be started from this page.

Software AG on the Web

You can invoke the Software AG home page (<http://www.softwareag.com/>) directly from Natural Studio.

▶ To invoke the Software AG home page

- From the **Help** menu, choose **Software AG on the Web**.

About Natural Studio

You can display information about Natural Studio in a dialog box (for example, the version number). A link to the Natural home page is also provided.

▶ To display information about Natural Studio

- From the **Help** menu, choose **About Natural Studio**.