

Using a Natural Data Source

This function enables you to generate an XML document from a data definition held in a Natural local, global or parameter data area.

The following topics are covered:

- Select Natural Data Area
- Select Data Type
- Generate File with DTD Definition or XML Schema
- Generate a serializer for an XML document
- Generate a parser for an XML document
- Parameter Settings
- Select Root Group
- Show Generation Report

See also:

- Using a Document Type Definition as Data Source
 - Setting up Specific Generation Options
-

Select Natural Data Area

This dialog serves to select generation from a Natural Data Structure or a XML Schema or Document Type Definiton.

To invoke the dialog shown below

1. Activate the XML Plug-In in 'Tools' > 'Configuration Tools' > 'Plug-In Manager' > 'XML Toolkit'.

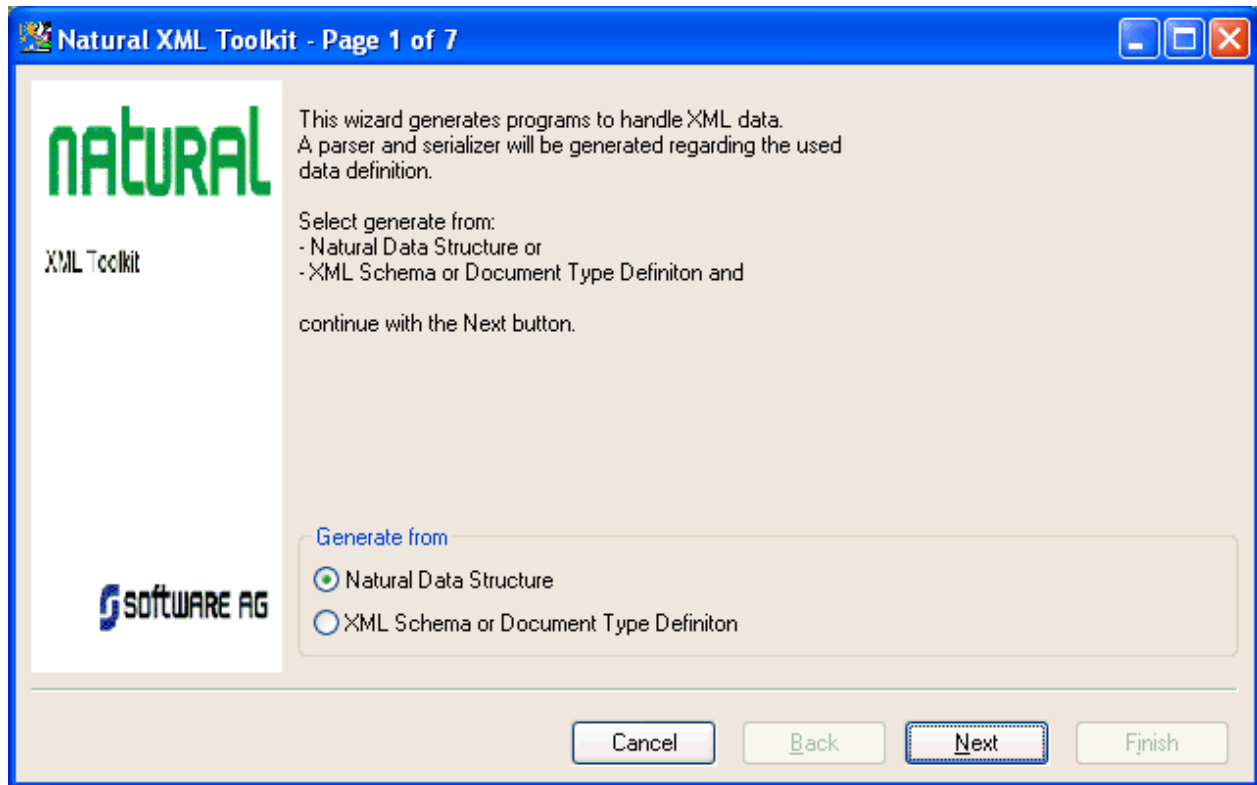
Or:

Alternatively choose the  button to open the Plug-In Manager.

2. Select 'Tools' > 'Development Tools' > 'XML Toolkit'.

Note:

The entries shown in the dialogs below are default or example values.



Choose if you would like to generate from a Natural Data Source or from a XML Schema or DTD.

Select **Next** to continue.

Field Descriptions

Library

Belongs to Group:	Select Input Data Area
Default Value:	(All libraries)

Type

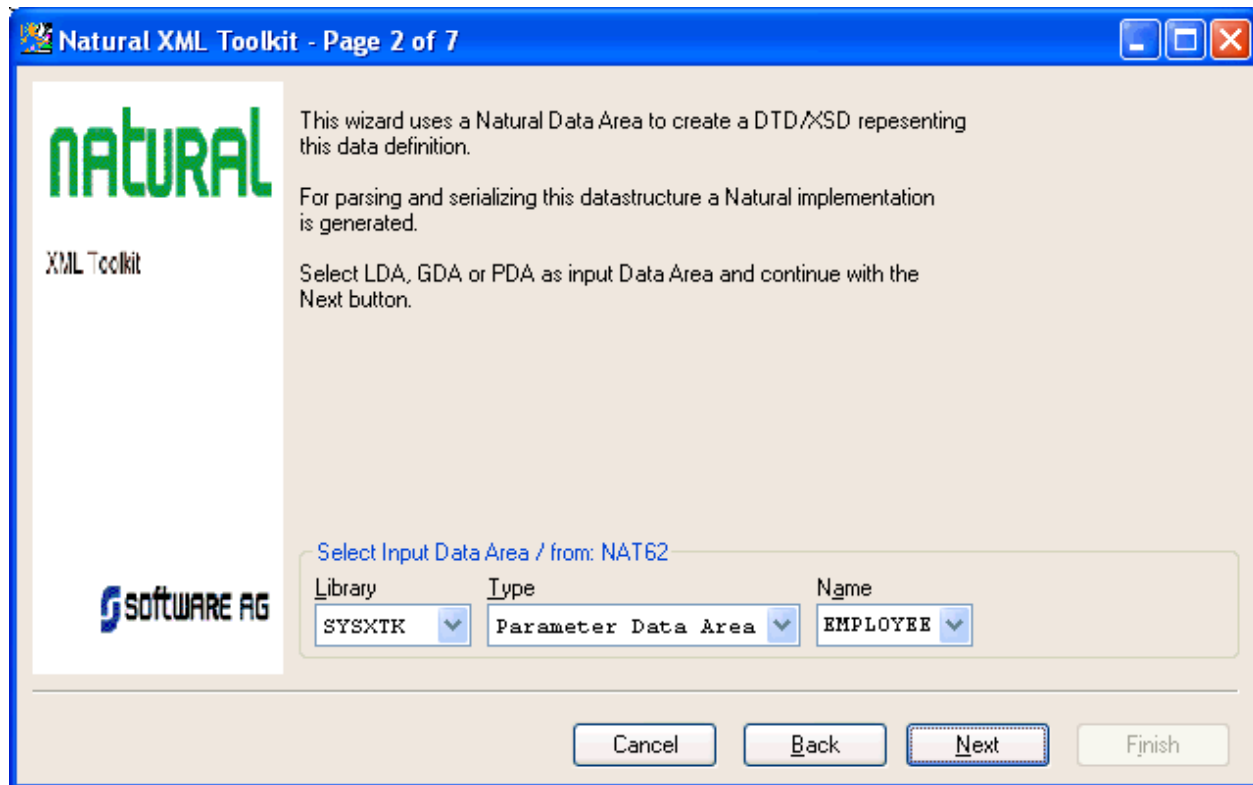
Belongs to Group:	Select Input Data Area
--------------------------	------------------------

Name

Belongs to Group:	Select Input Data Area
Format/Length:	A8
Default Value:	(All objects of the selected library and type)

Select Data Type

This dialog is used to select the data type.



Field Descriptions

Library

Belongs to Group:	Library
Default Value:	(All libraries)

Type

Belongs to Group:	Type
Possible Values:	Local Data Area Parameter Data Area Global Data Area

Name

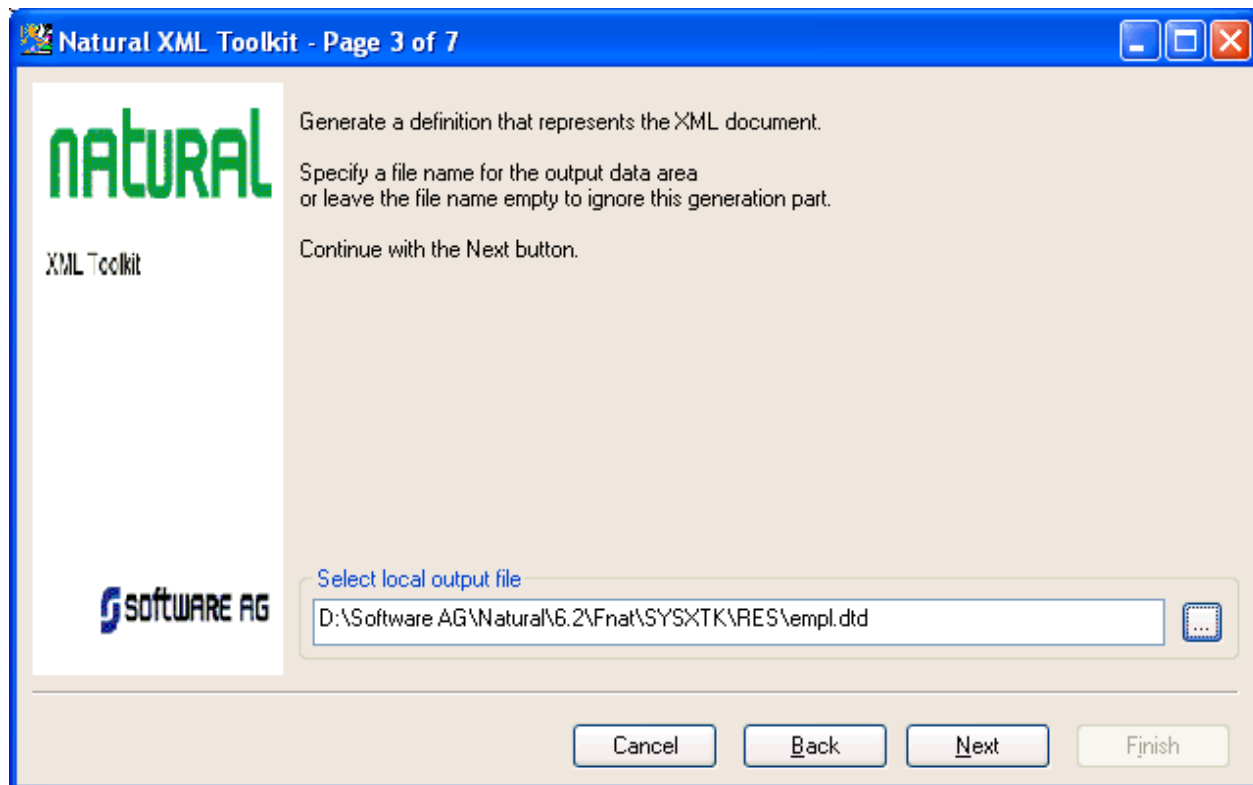
Belongs to Group:	Name
Default Value:	(All objects of the selected library and type)

Select the desired element, e.g. EMPLOYEE .

Choose **Next** to continue.

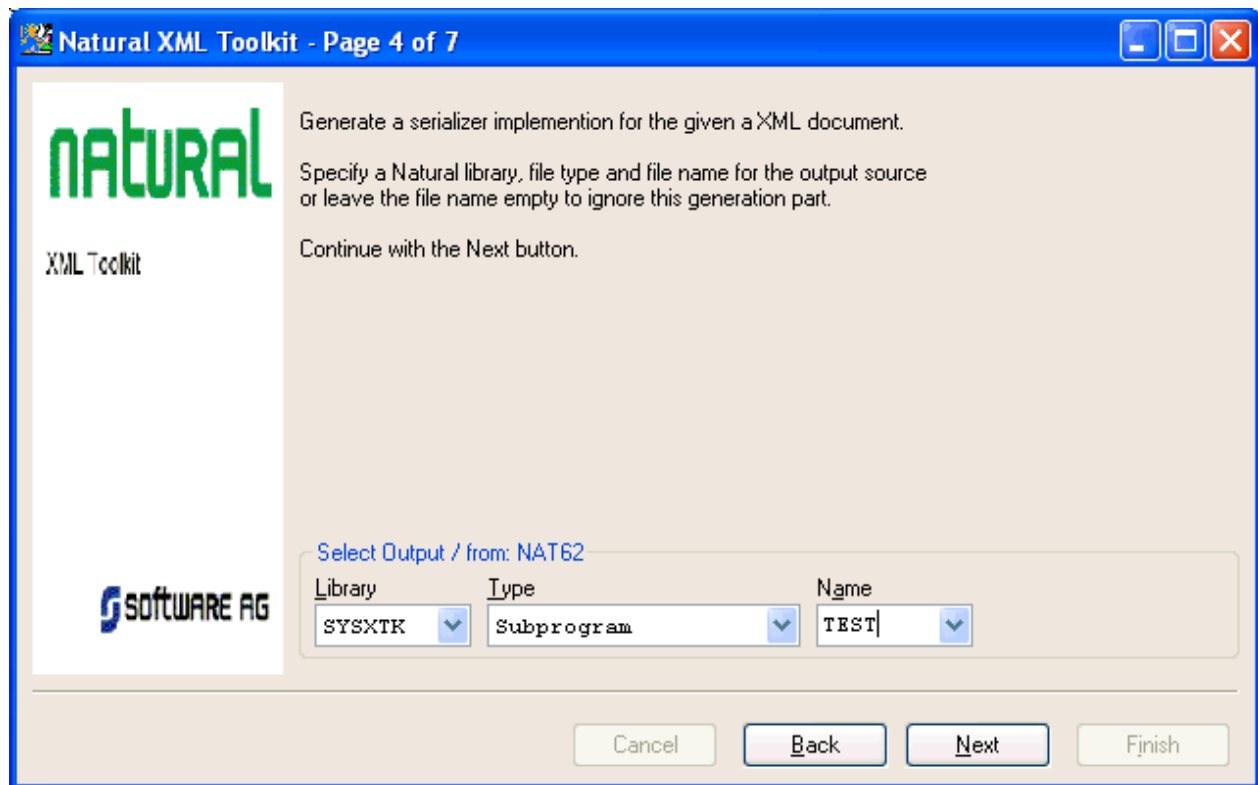
Generate File with DTD Definition or XML Schema

In this dialog you can specify a file name for the output data area.



Choose **Next** to continue.

Generate a serializer for an XML document



This dialog is used to specify a Natural Library, file type and file name for the output source.

Field Descriptions

Library

Belongs to Group:	Library
Default Value:	(All libraries)

Type

Belongs to Group:	Type
Possible Values:	Copycode Subprogram

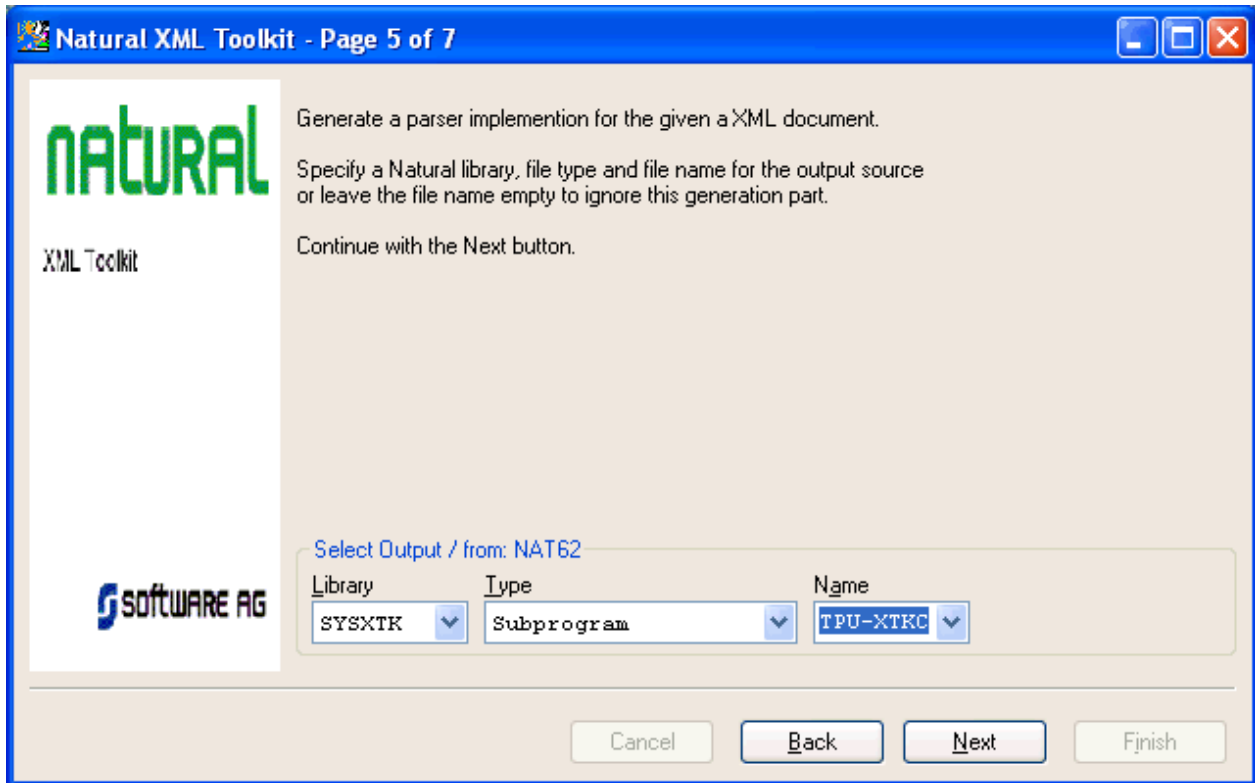
Name

Belongs to Group:	Name
Default Value:	(All objects of the selected library and type)

Choose **Next** to continue.

Generate a parser for an XML document

This dialog is used to generate copycode as implementation for the serialization of the given group into an XML document.



Field Descriptions

Library

Belongs to Group:	Library
Default Value:	(All libraries)

Type

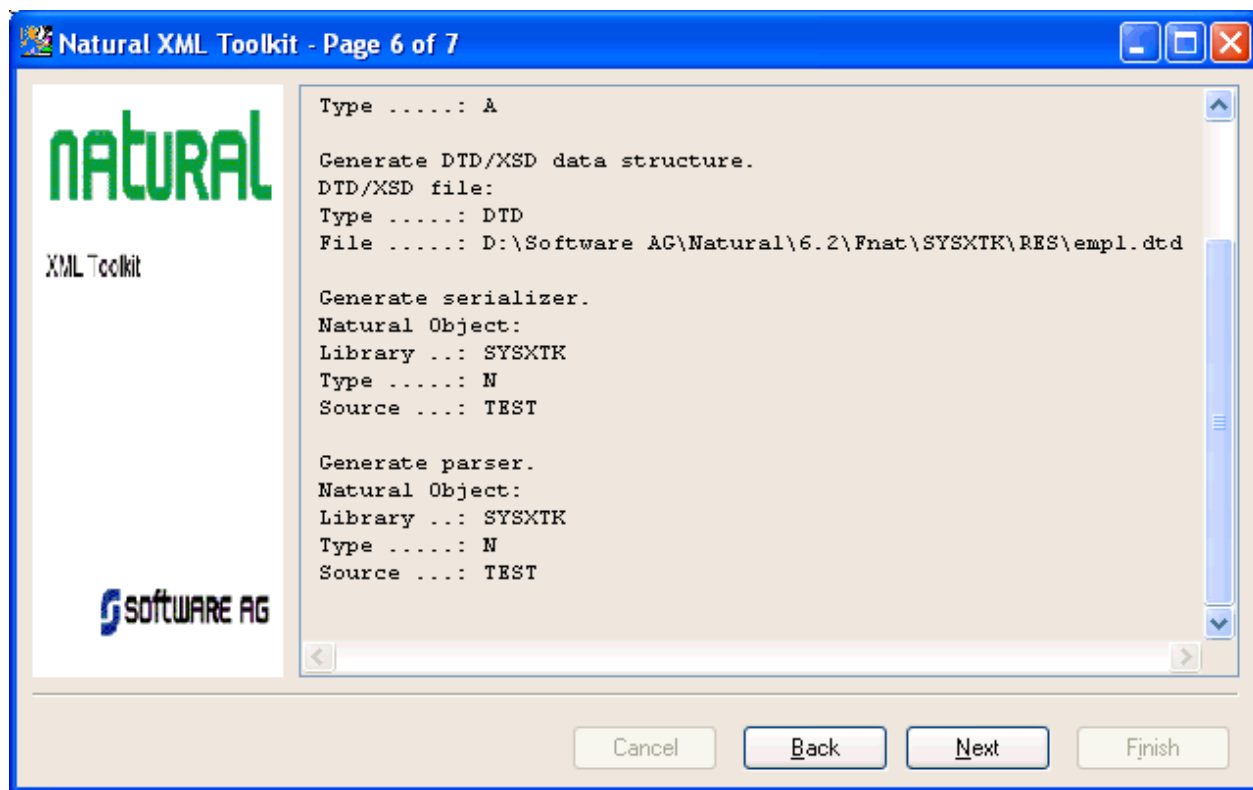
Belongs to Group:	Type
Possible Values:	Copycode Subprogram

Name

Belongs to Group:	Name
Default Value:	(All objects of the selected library and type)

Choose **Next** to continue.

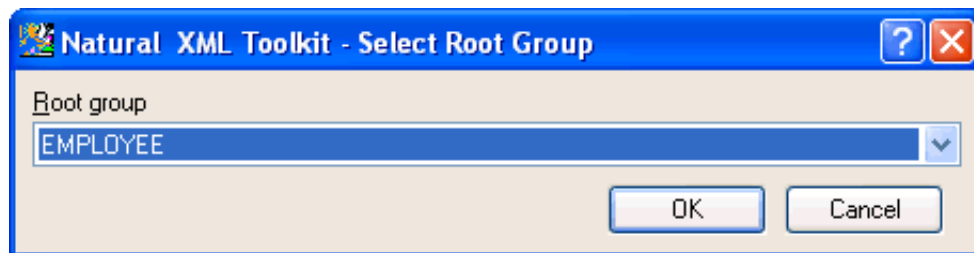
Parameter Settings



This screen shows you the settings used for the generation process.

Choose **Next** to continue.

Select Root Group

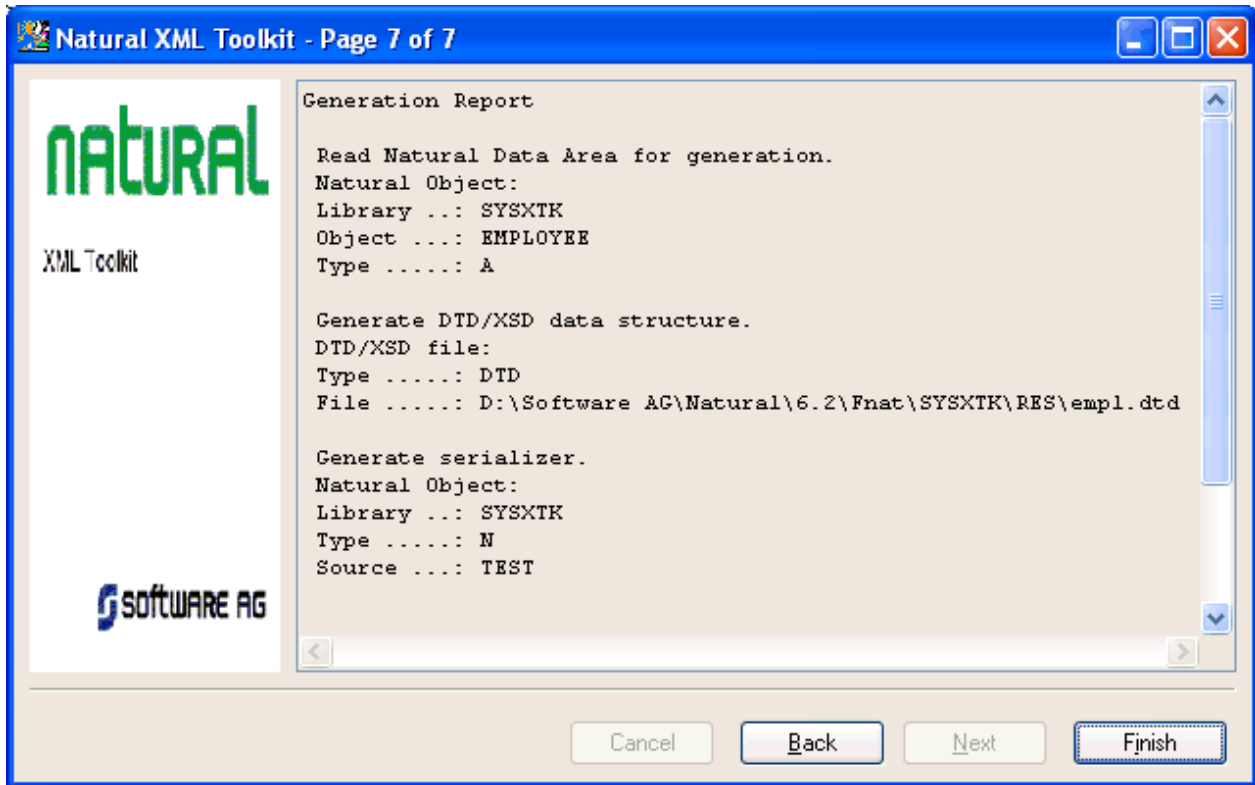


In this dialog you can select the Root Group .

Choose **OK** to continue.

Show Generation Report

After the generation is complete, the generation report is displayed.



Choose **Finish** to end the generation process.