

Test Utility WEB-ONL with SYSWEB

The Test Utility Web Online is a component of the Natural Web Interface. You have the ability to check your subprogram locally without involving an HTTP server. The transfer parameters for your web page are transferred into the Test Utility and are posted directly to the business logic. As communication platform, you can choose either RPC or DCOM as in real remote communications. The result is either the web page expected or an error message. The web page can be viewed with the browser or a viewer of your choice. If you receive an error message, you can easily debug your business logic locally without writing an extra test routine. No remote debugging is needed.

Features:

- Local application checking.
- No need for remote debugging.
- Simplified error checking.
- Comfortable operation by user friendly interface.
- No need to write an extra test routine.

This section covers the following topics:

- Prerequisites
 - Running the Application
 - Supported Content Types
 - Input/Output Fields
-

Prerequisites


- Web browser which supports different content types, for example, Microsoft Internet Explorer Version 5.0 or higher.
- Any available text editor.

Running the Application

To define path adjustments

1. Start the main dialog.
2. Select a browser and viewer of your choice with Tools > Options...
3. Set the browser, viewer and work file path.

4. Press the OK button.

 **To start the application**

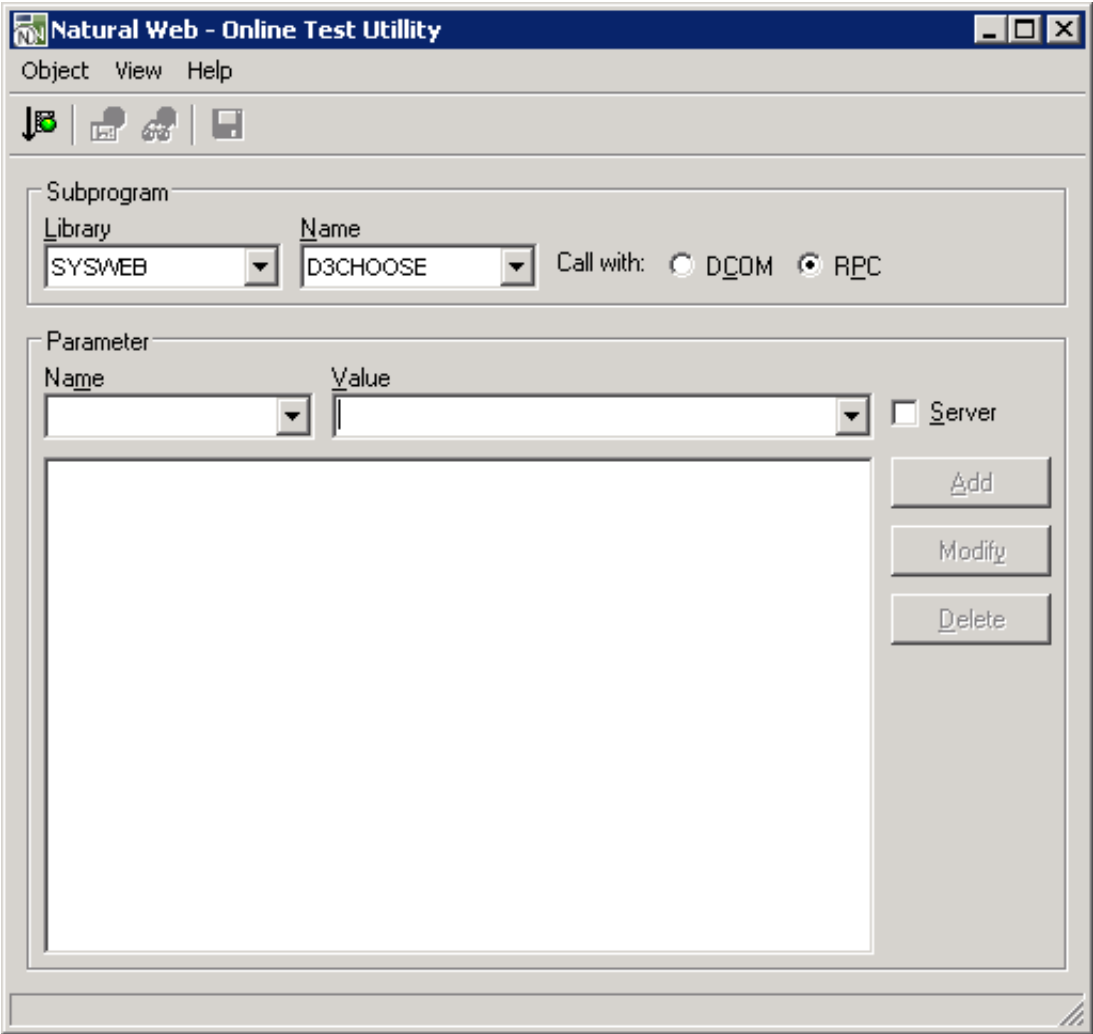
1. Start the dialog WEB-ONL.
2. Select a library and subprogram name.
3. Optional: add parameters.
4. Choose RPC or DCOM.
5. Press the Execute button.
6. View the result by pressing either the Result... or the Browse... button.

Supported Content Types

The following Content Types are supported by the Test Utility:

Content Type	Extension
"application/rtf"	"rtf"
"application/powerpoint"	"ppt"
"application/msword"	"doc"
"application/excel"	"xls"
"text/html"	"htm"
"text/plain"	"txt"
"text/xml"	"xml"
"text/richtext"	"rtf"

If you need further Content Types, change the subroutine HTML2CONTENT-TYPE (SYSWEB/W3CO2EXT) and extend the translation table to your own needs.



Input/Output Fields

Field	Explanation
Subprogram: Library/Name	Enables you to specify the library and the name of the required subprogram. The available libraries and subprograms are automatically taken from the library workspace and listed in selection boxes.
Server	If any of the name-value-pairs are server variables, you need to check this toggle button. Note that any status will last until you change it again.
Interface	Can be selected with either DCOM or RPC as communication form. For DCOM, you have to register your classes first. Default: RPC
Parameters: Name/Value	Here you can enter the name-value-pairs needed from the subprogram. To take them over into the parameter list, press the Add button. To modify the entries, use the Modify button. You do not have to substitute &, =, %; this will be done by the WEB-ONL program. If you use server parameters, check the Server toggle button before you add the parameter to the parameter list. In the parameter list, all name-value-pairs are displayed. &, =, % are substituted. To delete a pair, select the item and press the Delete button. Every selected item will be inserted into the Name and Value fields. If you wish to modify a pair, select the item, change it in the Name and Value fields and press the Modify button.

Object

Execute Subprogram

Starts the editor chosen with the Options dialog.

Save to Natural Text

Saves the returned data as Natural object of the type Text.

Exit

Leaves the dialog.

View

Result...

Executes the selected subprogram.

Browser...

Starts the browser chosen with the Options dialog.

Options...

Opens the Options dialog.

Help

Contents

Displays this HTML-based help file.

About

Provides general program information.