

Invoking and Terminating SYSMAIN

This section provides instructions for invoking and terminating the SYSMAIN utility online.

For instructions on invoking and executing SYSMAIN online or in batch mode with a subprogram, see *Using SYSMAIN with Subprogram*.

- Invoking SYSMAIN
 - Terminating SYSMAIN
-

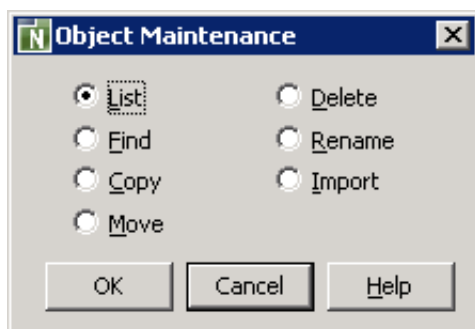
Invoking SYSMAIN

▶ To invoke the SYSMAIN utility

1. Enter the following system command:

```
SYSMAIN
```

An **Object Maintenance** dialog box similar to the example below appears with the SYSMAIN utility menu:



2. Select the radio button that corresponds to the required function by choosing any of the following methods:

Click a radio button.

Or:

Use DOWN ARROW or UP ARROW to navigate to a radio button.

Or:

Press one of the following shortcut keys:

SHIFT+L for **List**

SHIFT+F for **Find**

SHIFT+C for **Copy**

SHIFT+M for **Move**

SHIFT+D for **Delete**

SHIFT+R for **Rename**

SHIFT+I for **Import**

3. Choose **OK**.

(**Cancel** exits the SYSMAIN utility.)

An **Object Maintenance** dialog box appears for the selected function as shown in the following example of **Copy**:

The screenshot shows the 'Object Maintenance - Copy' dialog box. It features a title bar with a close button. The dialog is organized into several sections: 'Source' and 'Target'. The 'Source' section contains a 'Library' dropdown menu set to 'TESTLIB', 'DBID' and 'FNR' text boxes both containing '30', a 'Name' text box with an asterisk, and a 'Type' section with radio buttons for 'Programming' (selected) and 'Views (DDM)'. The 'Code' section has checkboxes for 'Source', 'Cataloged', and 'XREF'. The 'Target' section mirrors the 'Source' section for 'Library', 'DBID', and 'FNR', but includes a 'Name' text box with an asterisk and checkboxes for 'Confirm on replace' and 'Rename'. At the bottom, there are three buttons: 'OK', 'Cancel', and 'Help'.

Terminating SYSMAIN

▶ To terminate the SYSMAIN utility

- Choose **Cancel**.

Or:

Choose the standard Windows close button.