

INPL Utility

The INPL utility (Initial Natural Program Load) is used to load or scan Natural objects and shared resources from files supplied by Software AG.

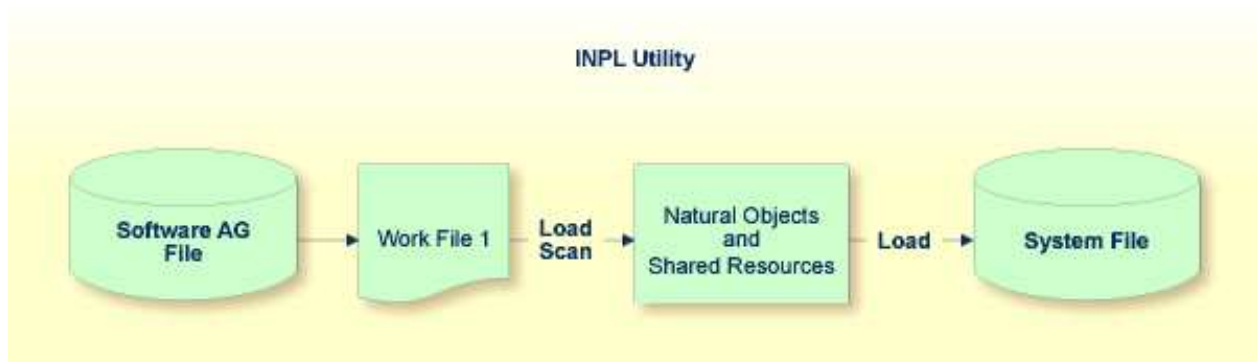
The *INPL Utility* documentation covers the following topics:

- Introducing the INPL Utility
 - Load Libraries Only
 - Load DDMs Only
 - Load Error Messages Only
 - Load All Objects
 - Scan INPL File
 - Natural Security Recover
-

Introducing the INPL Utility

The INPL utility processes Natural objects and shared resources provided by Software AG.

The following diagram is a basic illustration of the INPL functionality:



The Natural objects and shared resources are delivered as installation or update files which are assigned to Work File 1. The INPL utility loads the Natural objects and shared resources from Work File 1 into Natural system files.

The Natural objects and shared resources include cataloged objects and source objects that are contained in libraries in the Natural system files FNAT and FUSER.

In addition to loading Natural objects and shared resources, the INPL utility provides a scan function to check the contents of the file assigned to Work File 1 and a **Natural Security Recover** function which forces initialization of the Natural Security environment.

When loading cataloged objects into Natural system files, the INPL utility deletes any buffer pool entries of cataloged objects with identical names if contained in the same buffer pool used by the INPL utility.

If an error occurs during INPL execution, the INPL will be interrupted and terminate abnormally with Condition Code 40.

This section covers the following topics:

- Restrictions
- Special Case
- Invoking INPL
- Batch and Direct Command Mode
- Options Available
- INPL Report

Restrictions

You can process only files which are marked as "SAG system INPL file".

Special Case

When an INPL is to be performed in a Natural Security environment, the INPL command can be specified using the dynamic Natural profile parameter *STACK*.

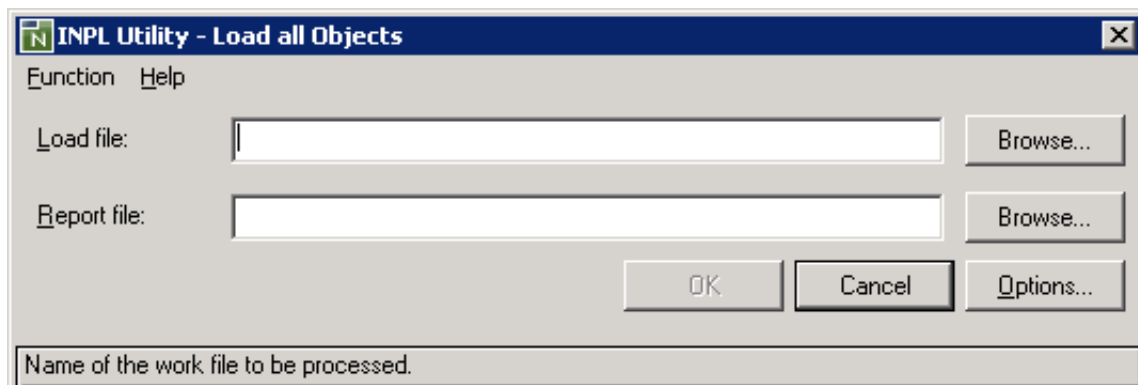
Invoking INPL

▶ To invoke the INPL utility

1. Enter the following Natural system command:

```
INPL
```

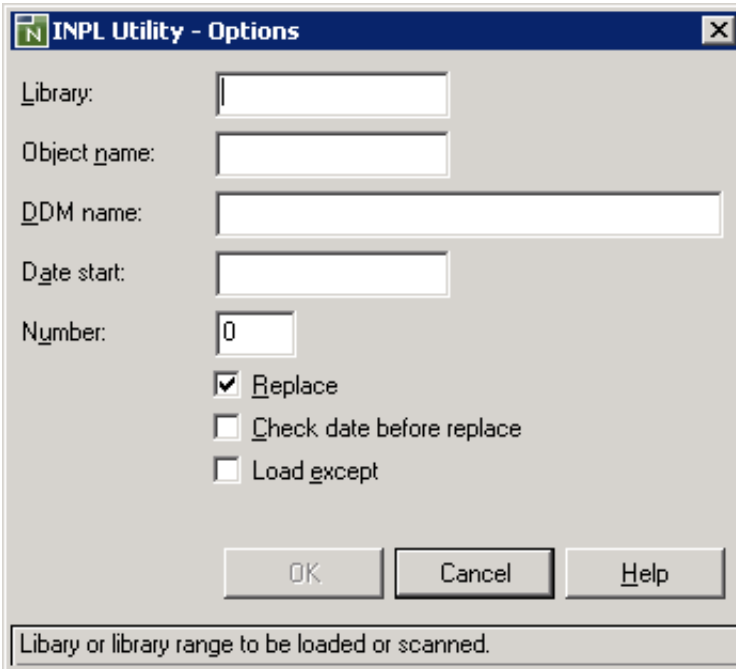
An INPL utility window similar to the example below is displayed:



2. Select the file you want to load and the file into which the INPL report (see below) is to be written. For detailed information, refer to *Options Available*.
3. Choose **OK** to confirm your entries.
4. From the **Function** menu, choose one of the following functions:
 - Load Libraries Only
 - Load DDMs Only
 - Error Messages Only
 - Load All Objects
 - Scan INPL File
 - Natural Security Recover

For detailed information on these functions, refer to the corresponding sections.

5. Choose the **Options** button and, in the **Options** dialog box, enter the parameters to be applied during execution of this function.



The screenshot shows a standard Windows-style dialog box titled "INPL Utility - Options". It features a title bar with a close button (X) on the right. The main area contains the following elements from top to bottom:

- A text label "Library:" followed by an empty text input field.
- A text label "Object name:" followed by an empty text input field.
- A text label "DDM name:" followed by a wide text input field.
- A text label "Date start:" followed by an empty text input field.
- A text label "Number:" followed by a text input field containing the digit "0".
- Three checkboxes:
 - Replace
 - Check date before replace
 - Load except
- Three buttons: "OK", "Cancel", and "Help".
- A status bar at the bottom with the text "Library or library range to be loaded or scanned."

For details, refer to *Options Available*.

Batch and Direct Command Mode

When you run INPL in batch or when you use the direct-command mode, the input data used in connection with the INPL command corresponds to the codes and values that apply to the fields provided with a character user interface as shown in the example of an INPL menu in a UNIX environment below and described in *Options Available*. For example, assuming the session parameter ID is set to comma (,), the instruction for loading a specific DDM may read:

```
INPL D,,,ddm-name
```

```
11:04:48          ***** NATURAL INPL UTILITY *****          2001-11-09
User: SAG                                     Library: SYSTEM

          Code   Function
          L     Load Libraries Only
          D     Load DDMS Only
          E     Load Error Messages Only
          B     Load All Objects
          S     Scan INPL File
          R     Natural Security Recover
          ?     Help
          .     Exit

Code ..... B
Replace .... Y (Y/N/O)      Load Except . N (Y/N)
DDM Name ....
Library .....
Object Name .                Date .....          (YYYY-MM-DD)
Check Date .. N (Y/N)      Number ..... 0
File Type ... D (D/P)
Load File ... $NATWORK/SAGLOAD.sag
Report File . $HOME/report.txt
```

Options Available

The following section describes the text boxes in the INPL utility dialog boxes where you can specify the file to be used for the INPL and one or more parameters as object selection criteria for the INPL function selected from the **Function** menu. The use of a parameter depends on the respective function as indicated in the relevant documentation sections.

Item	Description
Load file	The name of the file to be loaded.
File type (batch or direct commands only)	INPL automatically recognizes the type of the load file such as binary or portable. However, due to compatibility reasons, the <code>File type</code> parameter must still be specified when executing INPL in batch or direct command mode, but it will not be evaluated.
Report file	The name of the file into which the INPL report (see below) is to be written.
Library	The name of a library or a range of names. If you enter a value that ends with an asterisk (*), each library with a name that starts with the specified value is processed. The library name is mandatory if Object name is specified.

Item	Description
Object name	<p>The name of a Natural object (except DDMs) or a range of names.</p> <p>If the value ends with an asterisk (*), each object with a name that starts with the specified value is processed.</p> <p>If this text box is empty, all objects contained in the library specified in the Library text box are processed.</p>
DDM name	<p>The name of a DDM or a range of names.</p> <p>If you enter a value that ends with an asterisk (*), each DDM with a name that starts with the specified value is processed. If only an asterisk (*) is entered or if this text box is empty, all DDMs are processed.</p>
Date start	<p>Restricts processing to Natural objects and shared resources which were saved or cataloged on or after the date entered in this text box.</p> <p>The date must be entered in the format <i>YYYY-MM-DD</i> (<i>YYYY</i> = year, <i>MM</i> = month, <i>DD</i> = day).</p>
Number	<p>Limits processing of Natural objects and shared resources to a specified number. All objects are counted which are loaded or scanned according to the specified selection criteria.</p> <p>If the number of Natural objects processed has reached the value entered in the Number text box, processing is terminated with a corresponding message.</p>
Replace	<p>Specifies whether the Natural objects and shared resources to be processed are to replace any that already exist on the system files.</p> <p>Possible settings are:</p> <p>Checked All existing Natural objects and shared resources are replaced. This is the default setting.</p> <p>Unchecked Existing Natural objects and shared resources are <i>not</i> replaced.</p> <p>See also Check date before replace to replace only Natural objects and shared resources that are older than the Natural objects and shared resources to be loaded.</p>
Check date before replace	<p>Specifies whether existing Natural objects and shared resources are to be replaced depending on their time stamp.</p> <p>This parameter has no effect if Replace is not selected.</p> <p>Possible settings are:</p> <p>Checked Only objects which are older than the Natural objects or shared resources of the same name are replaced. An object is older if it was saved or cataloged before the object to be loaded.</p> <p>Unchecked All objects are replaced. This is the default setting.</p>

Item	Description
Load except	<p>Specifies whether to exclude Natural objects and shared resources from processing.</p> <p>This parameter does not apply to error messages.</p> <p>Possible settings are:</p> <p>Checked All Natural objects and shared resources are processed except for the objects specified in the text boxes DDM name, Library and/or Object name.</p> <p>Unchecked No exceptions; all Natural objects and shared resources are processed. This is the default setting.</p> <p>Examples of load exceptions:</p> <p>All libraries except the library ABC are loaded: Function = Load Libraries Only Library = ABC</p> <p>All DDMs with a prefix other than XY are loaded: Function = Load DDMs Only DDM name = XY*</p> <p>All objects contained in libraries with a prefix other than AB and all DDMs with a prefix other than CD are loaded: Function = Load All Objects Library = AB* DDM name = CD*</p>
Natural Security recover object	<p>Only applies if the function Natural Security Recover has been selected.</p> <p>If checked, resets the owner information of specified Natural objects.</p>

INPL Report

When the selected INPL function is complete, a corresponding INPL report is displayed in a list box (online mode).

Load Libraries Only

This function of the INPL utility is used to load Natural cataloged objects and source objects and shared resources into specified libraries in the Natural system file FNAT or FUSER.

To load libraries

1. From the **Function** menu, choose **Load Libraries Only**. You can specify parameters to be valid during execution of this function:

- Replace
- Load except
- Library
- Object name
- Date start
- Check date before replace
- Number

For detailed information on these parameters, refer to *Options Available* in the section *Introducing the INPL Utility*.

2. Confirm your entries.

When the function is complete, a corresponding INPL report (see the section *Introducing the INPL Utility*) is output.

Load DDMs Only

This function of the INPL utility is used to load DDMs into the libraries indicated in the work file.

To load DDMs

1. From the **Function** menu, choose **Load DDMs Only**. You can specify parameters to be valid during execution of this function:
 - Replace
 - Load except
 - DDM name
 - Number

For detailed information on these parameters, refer to *Options Available* in the section *Introducing the INPL Utility*.

2. Confirm your entries.

When the function is complete, a corresponding INPL report (see the section *Introducing the INPL Utility*) is output.

Load Error Messages Only

This function of the INPL utility is used to load user-defined error messages or system error messages into specified libraries in the Natural system file FUSER or FNAT respectively.

 **To load error messages**

1. From the **Function** menu, choose **Load Error Messages Only**. You can specify parameters to be valid during execution of this function:
 - Replace
 - Library


For detailed information on these parameters, refer to *Options Available* in the section *Introducing the INPL Utility*.

2. Confirm your entries.

When the function is complete, a corresponding INPL report (see the section *Introducing the INPL Utility*) is output.

Load All Objects

This function of the INPL utility is used to load all Natural objects (including error messages and DDMs) and shared resources into the libraries indicated in Work File 1.

 **To load all objects and shared resources**

1. From the **Function** menu, choose **Load All Objects**. You can specify parameters to be valid during execution of this function:
 - Replace
 - Load except
 - DDM name
 - Library
 - Object name
 - Date start
 - Check date before replace
 - Number

For detailed information on these parameters, refer to *Options Available* in the section *Introducing the INPL Utility*.

2. Confirm your entries.

When the function is complete, a corresponding INPL report (see the section *Introducing the INPL Utility*) is output.

Scan INPL File

This function of the INPL utility is used to scan the contents of the file assigned to Work File 1.

To scan an INPL File

1. From the **Function** menu, choose **Scan INPL File**. You can specify parameters to be valid during execution of this function:
 - Load except
 - DDM name
 - Library
 - Object name
 - Check date before replace
 - Number

For detailed information on these parameters, refer to *Options Available* in the section *Introducing the INPL Utility*.

2. Confirm your entries.

When the function is complete, a corresponding INPL report (see the section *Introducing the INPL Utility*) is output.

Natural Security Recover

This function of the INPL utility is used to force initialization of the Natural Security environment.

The following options are provided:

- Reset Environment
- Remove Owners

Reset Environment



Warning:

Execution of this function will reset the user profile DBA and the library profile SYSSEC as well as the link between these two objects as they were after the initial installation; all other links to the library SYSSEC will be canceled. Other Natural Security profiles and links will not be modified. Contact Software AG technical support for further information.

▶ **To reset the environment**

- From the **Function** menu, choose **Natural Security Recover**.

Remove Owners

▶ **To remove owners**

1. From the **Function** menu, choose **Natural Security Recover**.
2. Choose the **Options** button.
3. In the **Options** dialog box, select the **Natural Security recover object** check box to reset the owner information of specified objects.