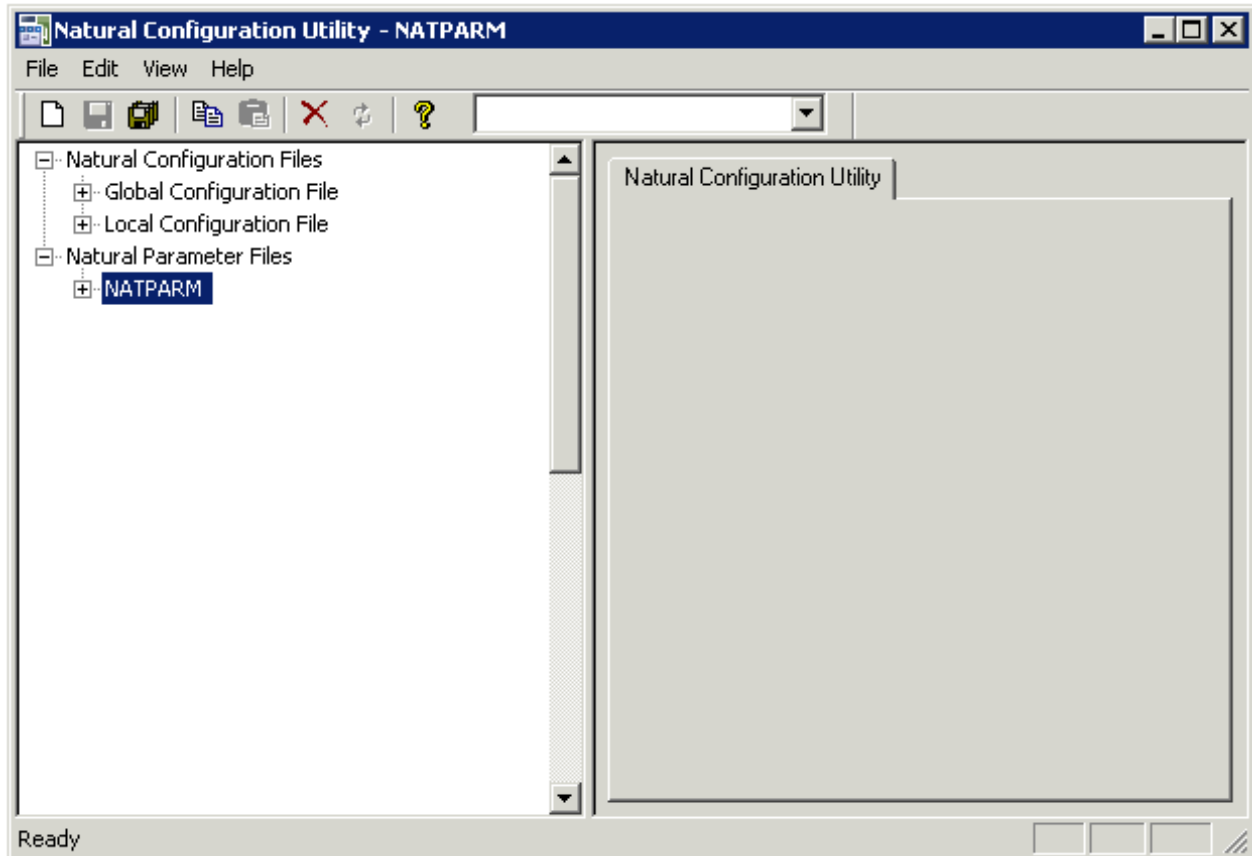


Elements of the Configuration Utility Window

When you start the Configuration Utility, the name of the parameter file which is currently active is shown in the title bar. It is also selected in the tree.



This chapter covers the following topics:

- Menu Bar
- Toolbar
- Tree
- Parameters
- Context Menus
- Status Bar

Menu Bar

The following menus are available:









Menu	Using the commands in this menu, you can ...
File	Manage (for example, create or delete) parameter files and save the change to all parameter and configuration files.
Edit	Copy and paste parameter files, and search for parameters.
View	Show or hide the toolbar and status bar.
Help	Invoke the online documentation and display information about the Configuration Utility.

Many commands can also be chosen from a toolbar and/or context menu.

Toolbar

You can execute the most important functions using a toolbar button. When you move the mouse pointer over a toolbar, a brief description for the button is shown in the status bar.

The following toolbar buttons are available:

-  Create new parameter file
-  Save selected parameter or configuration file
-  Save all files
-  Copy selected parameter file
-  Paste copied parameter file
-  Delete selected parameter file
-  Restore last saved version of selected parameter or configuration file
-  Display help

The drop-down list box in the toolbar enables you to search for a specific parameter. See *Finding a Parameter*.

To switch the toolbar display on and off

- From the **View** menu, choose **Toolbar**.

A check mark is shown next to this menu command when the toolbar is displayed in the Configuration Utility window.

Tree

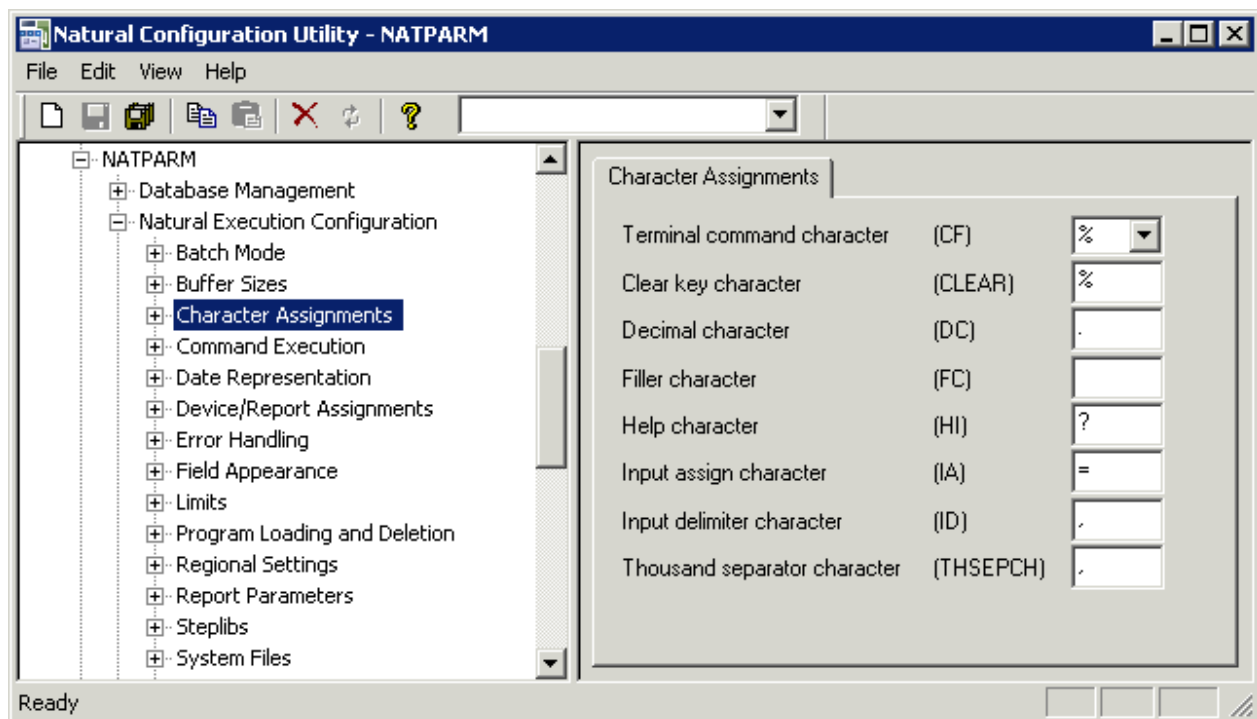
The tree on the left side of the Configuration Utility window contains nodes for two different types of files:

- **Natural Configuration Files**
When you expand this node, you can modify global and local configuration files. See *Overview of Configuration File Parameters*.
- **Natural Parameter Files**
When you expand this node, you can modify the profile parameters of the different parameter files. See *Overview of Profile Parameters*.

For information on how to change the parameter assignments and on how to create your own parameter files, see *Working with the Configuration Utility*.

Parameters

When you select a node for a category in the tree, the parameters are shown on the right of the window. In case of a parameter file, the names of the Natural profile parameters are shown in parenthesis on the right of the window, behind the label of the corresponding control. Example:



Context Menus

Context menus provide for selection the commands that are valid in the current context. The content of a context menu depends on the currently selected node in the Configuration Utility window.

▶ **To invoke a context menu**

1. Select the node for which you want to invoke a context menu.
2. Click the right mouse button.

The context menu appears and you can now choose the required command.

Status Bar

The status bar is the horizontal information line at the bottom of the Configuration Utility window. It shows short help texts for the commands in the menu bar, toolbar and context menu.

▶ **To switch the status bar display on and off**

- From the **View** menu, choose **Status Bar**.

A check mark is shown next to this menu command when the status bar is displayed in the Configuration Utility window.