

# Getting Started with the Layout Painter

The Layout Painter, which can be accessed from the development workplace, is used to write the page layout. This is an Application Designer application itself.

This chapter contains the following exercises:

- Creating a New Layout
  - Elements of the Layout Painter Screen
  - Previewing the Layout
  - Viewing the XML Code
- 

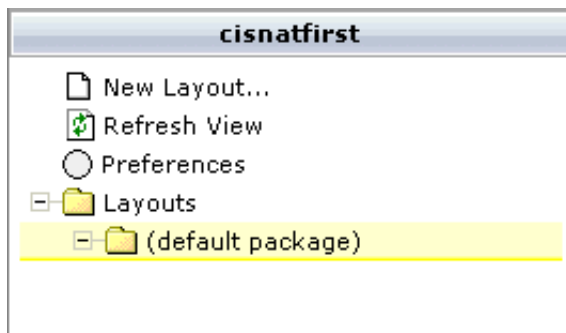
## Creating a New Layout

You will now create a layout which is stored in the project you have previously created.

### ▶ To choose a layout template

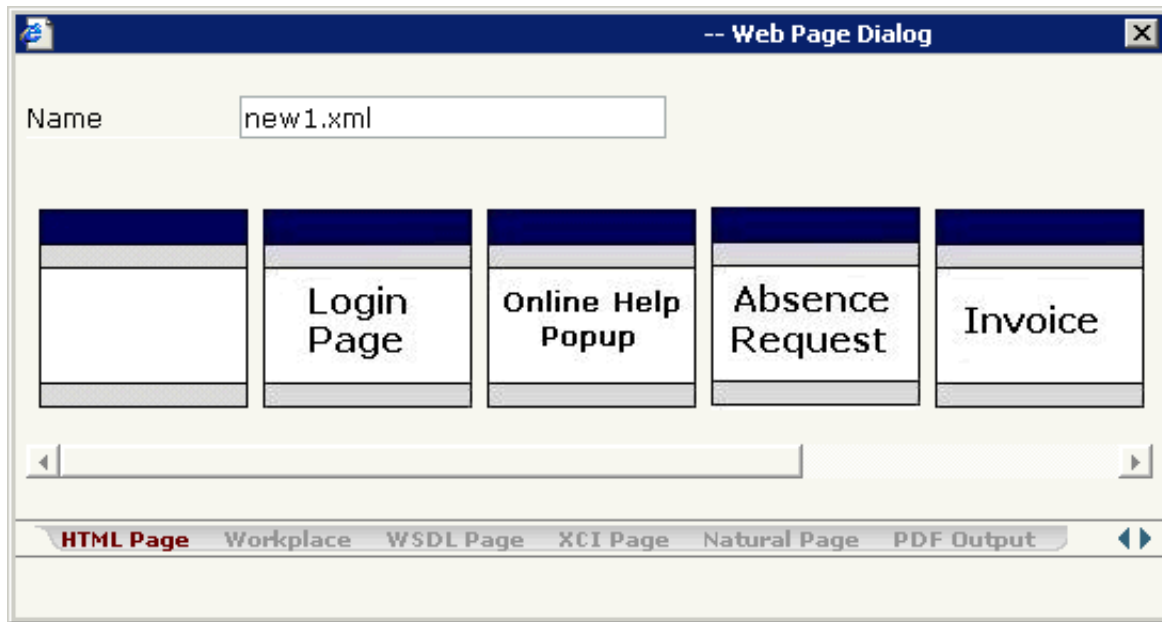
1. Choose the button for the project **cisnatfirst**.

The list of layout nodes inside the tree will be empty at the beginning:



2. Choose **New Layout...** in the tree.

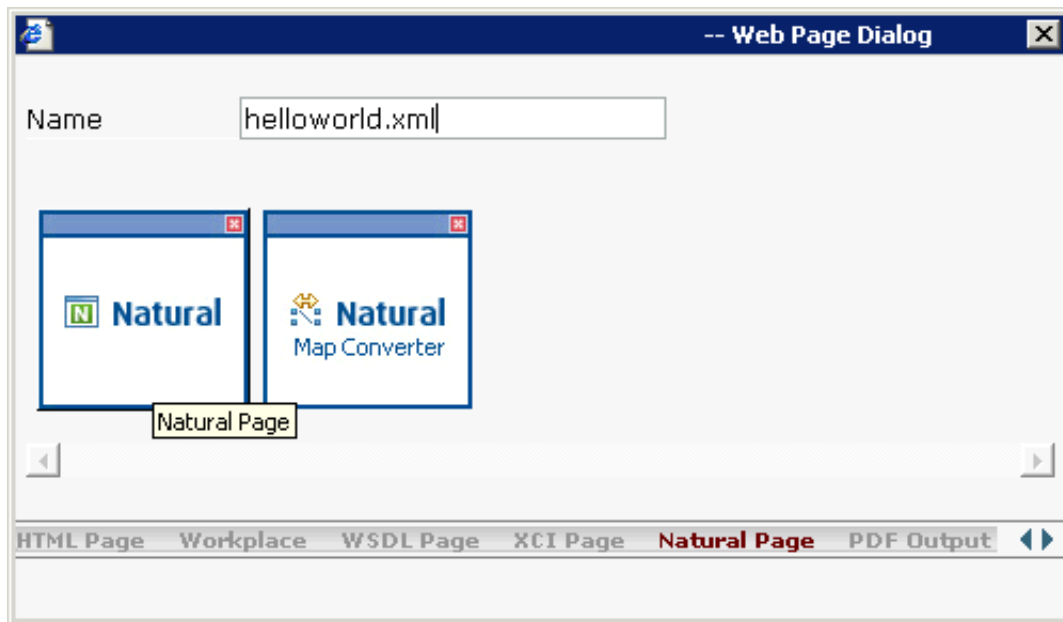
The following dialog appears.



3. Enter "helloworld.xml" in the **Name** text box.

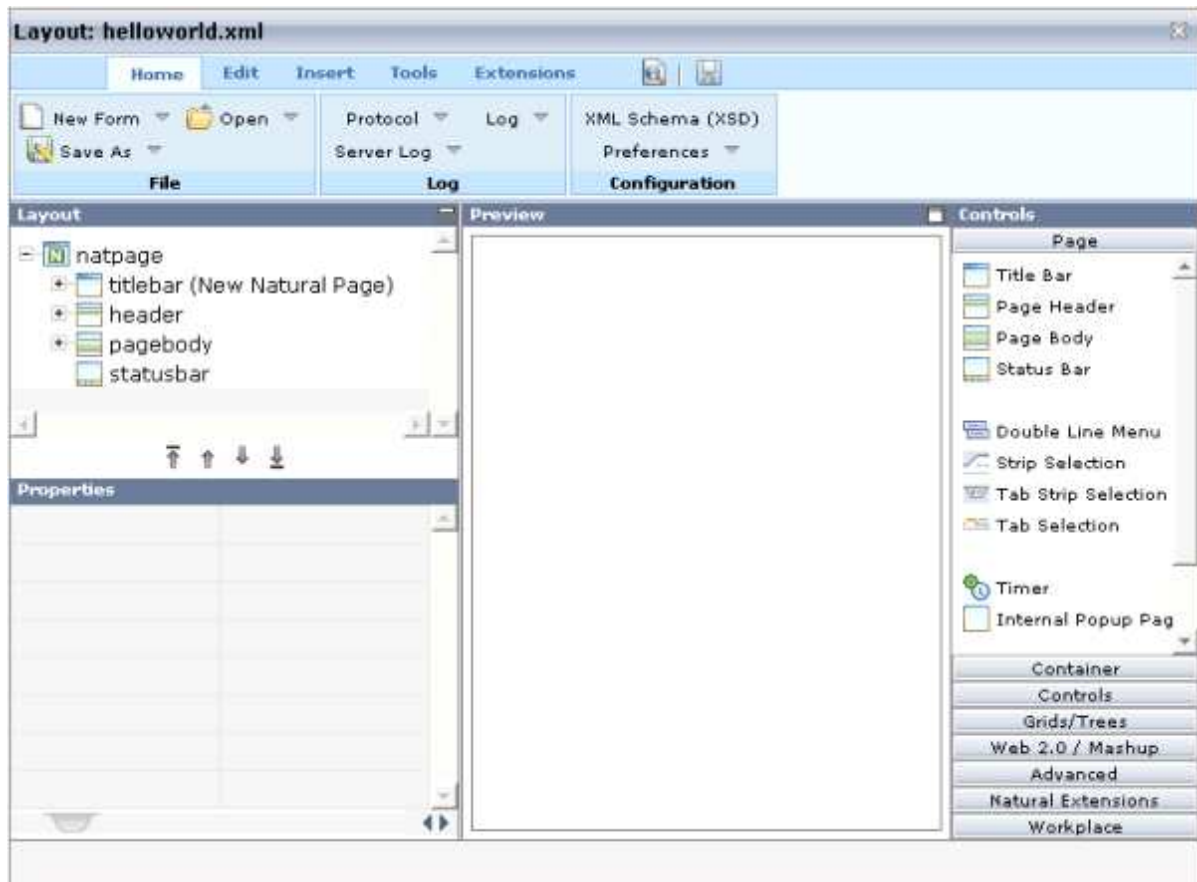
This is the name of your layout definition.

4. Select the **Natural Page** tab at the bottom of the dialog.



5. Select the template for the Natural page (when you move the mouse over this template, the tool tip "Natural Page" appears).

The main screen of the Layout Painter appears:

**Note:**

The file *helloworld.xml* is stored in the */xml* directory of your project.

## Elements of the Layout Painter Screen

The Layout Painter screen is divided into several areas:

- **Layout Area (left side)**

This area consists of a layout tree and a properties area.

The layout tree contains the controls that represent the XML layout definition. You drag these controls from the controls palette into the layout tree. Each node in the layout tree represents an XML tag.

In the properties area below the layout tree, you specify the properties for the control which is currently selected in the layout tree.

- **Preview Area (middle)**

The preview area shows the HTML page which is created using the controls in the layout area. This page is refreshed each time, you choose the preview button (see below).

- **Controls Palette (right side)**

Each control is represented by an icon. A tool tip is provided which appears when you move the mouse pointer over the control. This tool tip also displays the XML tag which will be used in the XML layout. The palette is structured into sections, where each section represents certain types of

controls.

## Previewing the Layout

The layout tree inside the Layout Painter already contains some nodes that were copied from the template that you chose in the dialog in which you specified the name of the page. To see what the page looks like, preview the layout as described below.

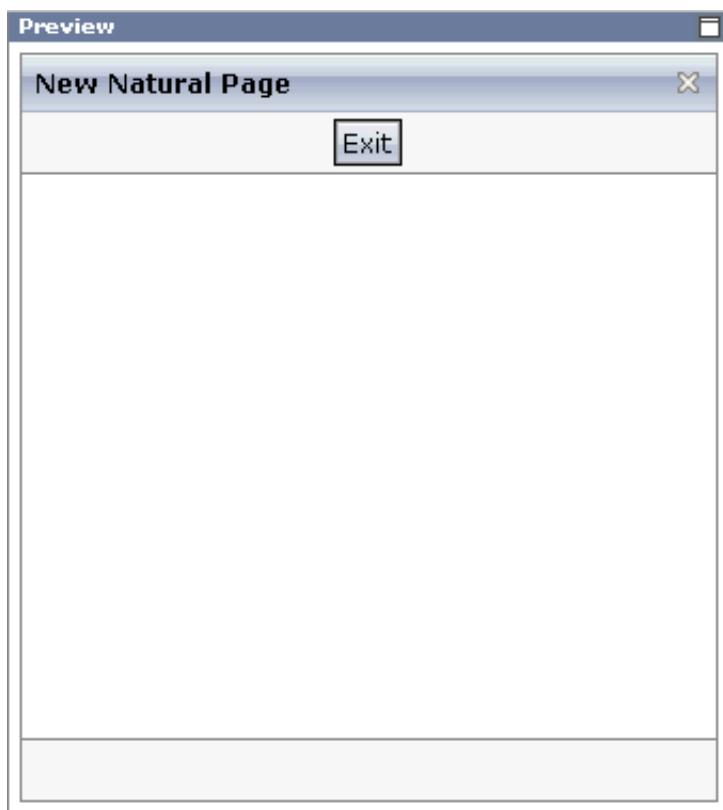
The preview area is a sensitive area. When you select a control in the preview area (for example, the title bar), this control is automatically selected in the layout tree.

### ▶ To preview the layout

- Choose the following button which is shown at the top of the Layout Painter.




The preview area is updated and you see the page. The page already contains a title bar, a header containing an **Exit** button, the page body and a status bar.



## Viewing the XML Code

When creating the layout, you can view the currently defined XML code.

 **To view the XML code**

- From the **Edit** tab of the Layout Painter, choose **XML**.

A dialog box appears. At this stage of the tutorial, it contains the following XML layout definition for the nodes which were copied from the template.

```
<natpage natsinglebyte="true" xmlns:njx="http://www.softwareag.com/njx/njxMapConverter">
  <titlebar name="New Natural Page">
  </titlebar>
  <header withdistance="false">
    <button name="Exit" method="onExit">
    </button>
  </header>
  <pagebody>
  </pagebody>
  <statusbar withdistance="false">
  </statusbar>
</natpage>
```

You can now proceed with the next exercise: *Writing the GUI Layout*.