

## Configuring a Data Source for the CONNX ODBC Driver

Determine whether you need to create a 32-bit data source, or a 64-bit data source.

If you are going to use the 64-bit CONNX ODBC Driver with a 64-bit application, you will need a 64bit data source.

If you are going to use the 32-bit CONNX ODBC Driver with a 32-bit application, you will need a 32-bit data source.

Procedures for creating a data source vary depending on whether your operating system is 32-bit or 64-bit.

### **32-bit operating system**

Enter into **Control Panel**, click **Administrative Tools** and then double-click the **Data Sources (ODBC)** icon. Click the **Add** button in the **ODBC Data Source Administrator** dialog box. There are three categories of data sources: **User DSN**, **System DSN**, or **File DSN**.

### **64-bit operating system**

For 64-bit data sources:

64-bit data sources must be configured using the 64bit ODBC Data Source Administrator.

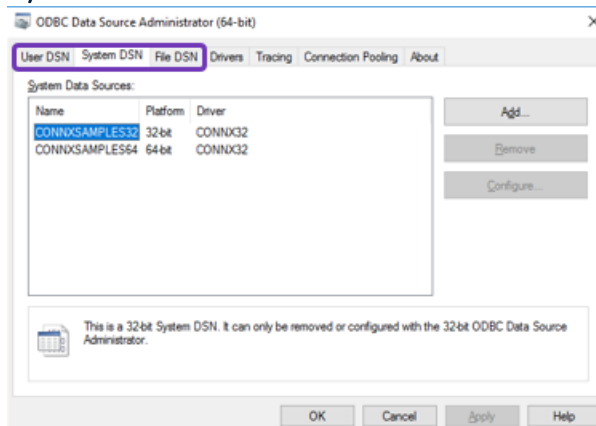
Enter into **Control Panel**, click **Administrative Tools**, and then double-click the **ODBC Data Sources (64-bit)** icon. Click the **Add** button in the **ODBC Data Source Administrator** dialog box. There are three categories of data sources: **User DSN**, **System DSN**, or **File DSN**.

For 32-bit data sources:

32-bit data sources must be configured using the 32-bit ODBC Data Source Administrator.

Click the **Start** button, point to **Settings**. In **Control Panel**, click **View 32bit Control Panel Items**, and then double-click the **Data Sources (ODBC)** icon. Click the **Add** button in the **ODBC Data Source Administrator** dialog box. There are three categories of data sources: **User DSN**, **System DSN**, or **File DSN**.

1. Select the tab for the type of DSN you wish to create
  - a. **User DSN:** A data source only available to the current user.
  - b. **System DSN:** A data source available on the client computer.
  - c. **File DSN:** A separate file placed in a folder and available to multiple clients. Generally, this is used in a network location to be accessed by multiple client systems.



2. Select the “add” button and you will see a list of drivers to use.
  - a. Both the 32-bit and 64-bit driver name is the **same** – **CONNX32**. Note the platform in the above screenshot.
3. Select the “CONNX32” driver. This will give you this box to input the appropriate information.
  - a. Data Source Name is **required**. This will be the name you will reference when you use this DSN
  - b. Description is an optional field. This is **not** required.
  - c. Data Dictionary is the CDD you have created and will point to for this specific DSN. This is **required**.
  - d. Application will become active when you have pointed at a valid CDD. This is **not** required. The application options will reflect the database containers you have in the CDD.

